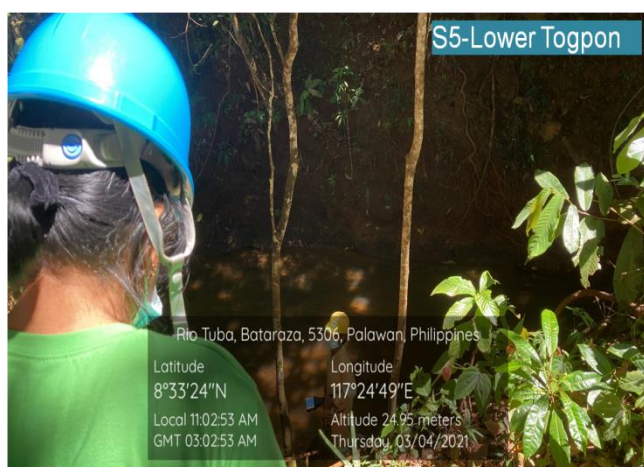


J. Other Remarks/Recommendations/Documentations:

1st Quarter 2021 Air and Water Sampling Activities



Figures 1-3: NOx & SOx Sampling - Sampling for gas emission was conducted on March 3, 2021 in three (3) stations namely Tagpisa, Upper Kinurong and Bulanjao Golf Course; Figures 4-5: Total Suspended Particles (TSP) sampling conducted on March 3 and 5, 2021 in, Upper Kinurong, Tagpisa and GSSI compound.



Figures 1-6: Collection of water samples and in-situ measurement of water quality conducted on March 4, 2021 in all sampling stations. Water samples for laboratory analysis were properly packed and delivered to OMLI.



Figures 1-3: TSF-2 South Dam Slope Grass planting activity; Figures 4-6: Enrichment and Enhancement Planting

Mangrove Plantation Project



Area/Location	Area Covered	Mangrove species planted	No. of propagules planted
Sitio Bongkol-bongkol, Rio Tuba, Bataraza, Palawan	10 hectares	<i>Rhizophora sp.</i>	25,000



Actual Planting

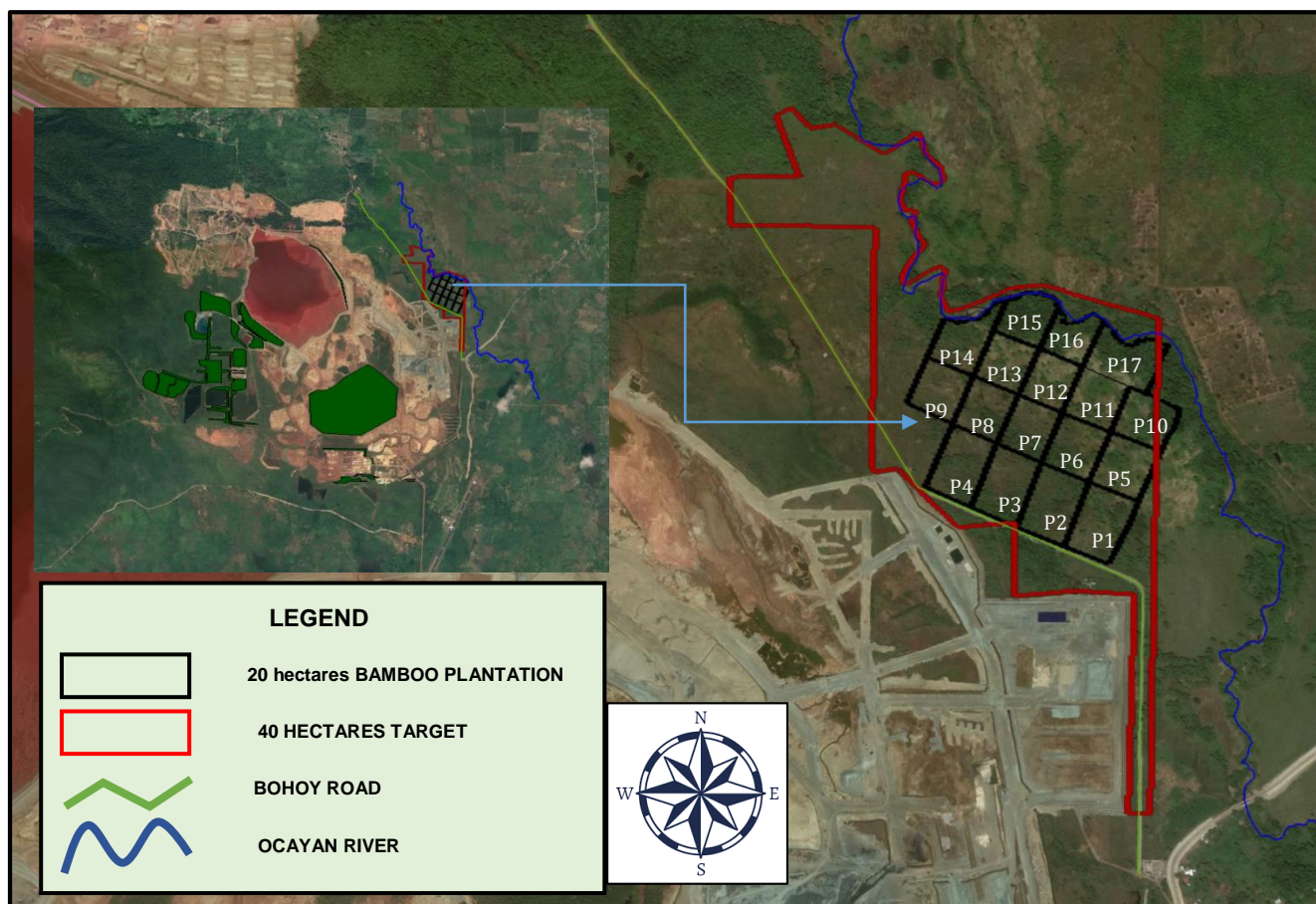


Mangrove Community Partner



Mangrove Propagules Collection

Bamboo Plantation Accomplishment



Plot No.	Bamboo Species Planted					Total	Area Covered
	Kawayan tinik	Patong	Bayog	Giant Bamboo	Kawayan kiling		
1	61	57	171	10	17	316	1.55
2			307		8	315	1.54
3			280			280	1.37
4			296			296	1.45
5	225					225	1.10
6			225			225	1.10
7			225			225	1.10
8			225			225	1.10
9		225				225	1.10
10					225	225	1.10
11					225	225	1.10
12					225	225	1.10
13			225			225	1.10
14	238					238	1.17
15			192			192	0.94
16			183			183	0.90
17	100	39	100			239	1.17
Total	624	321	2429	10	700	4084	20.0

Strictly follow Company health protocols of covid19 in workplace



Hauling of bamboo planting materials



Used karusa and Traktora to deliver bamboo planting materials in 20 hectares' plantation



Actual Planting



Bamboo Plantation



Water pond – 10 cubic meter capacity



CBNC Central Nursery



Mangrove Validation

TSF-1 Rehabilitation Area





Maintained Silt Collector Sump



Bio – indicator project – fish pen at west causeway



Sampling Station E with Supernatant discharge



Covered coal stockpiles and maintained coal siltation pond and drainage



Waste bins/containers at various working areas within and outside (causeway) the plant site



Hazardous Waste Storage Facility (A and B) – wastes are properly stored, labelled, and accounted for as reflected in the monitoring board



Visual status of Rock Quarry Reforestation wherein the slopes of the rock quarry will be planted with grasses to introduce biomass – per report of the company, 800 square meters was already planted.



Visual Status of Return Water Pond



On-going activities at TSF-3