



USAID
FROM THE AMERICAN PEOPLE

THE
UNIVERSITY
OF RHODE ISLAND
GRADUATE SCHOOL
OF OCEANOGRAPHY
CRC
COASTAL
RESOURCES
CENTER

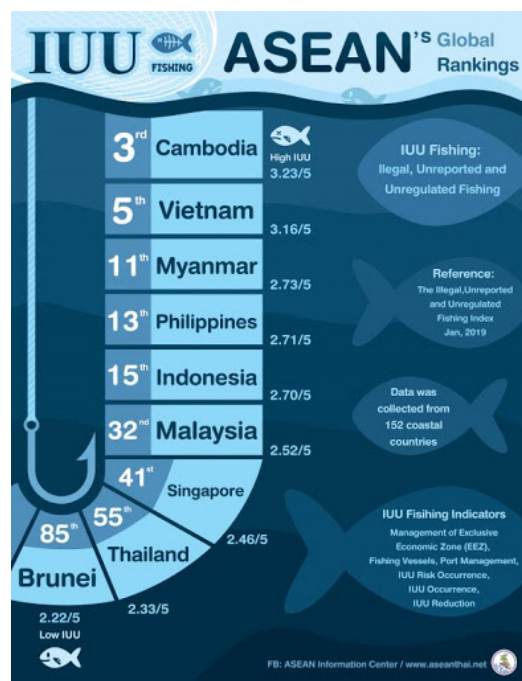
Philippine IUU Fishing Index and Threat Assessment Tool

A Collaboration between DA-BFAR and the USAID Fish Right Program

Background / Rationale

To promote a more holistic approach to deter and combat IUU fishing that will draw attention to the rewards of compliance, especially the increase in benefits for legal fishers while doing the reverse for IUU fishing, USAID Fish Right is collaborating with DA-BFAR on developing a strategic approach that will quantify, assess and address IUU fishing in Philippine waters that is two-pronged: (1) undertaking an IUU Fishing Quantification Workshop with experts and development practitioners and (2) developing an IUU Fishing Assessment Framework and Index with DA-BFAR and local government units (LGUs).

The IUU Fishing Index evaluates the level of threat of IUU fishing in a given area (e.g., municipal waters).



What is it?

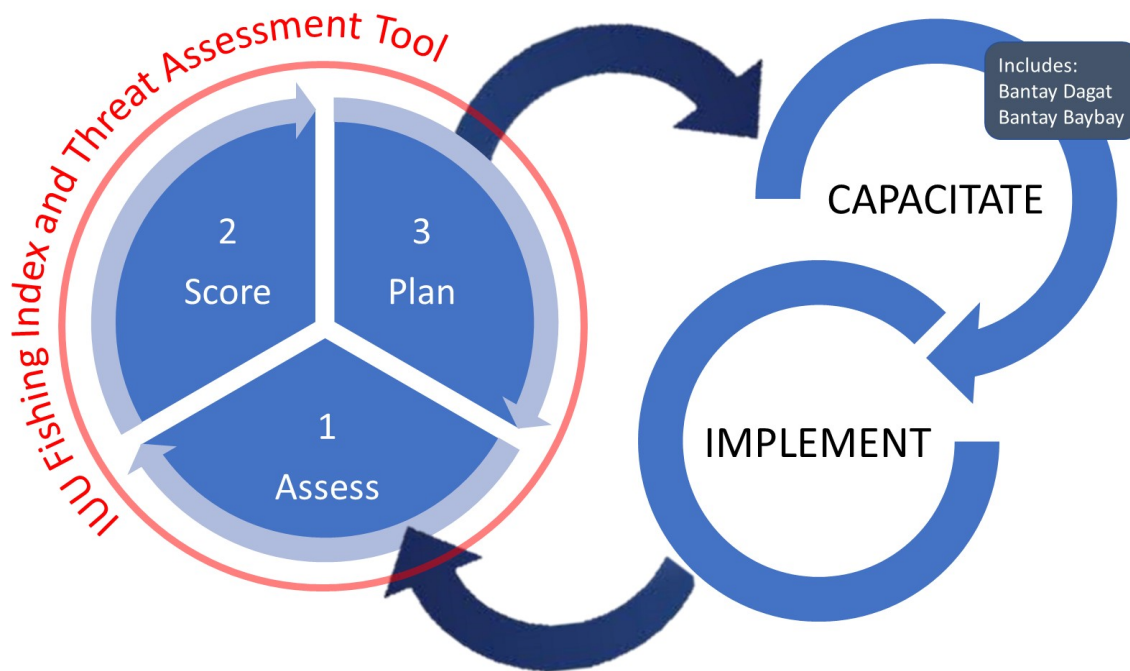
The IUU Fishing Index and Threat Assessment Tool collection of tools to guide the development of IUU Fishing Reduction Plans and assess interventions towards deterring, preventing, and eliminating IUU fishing in Philippine waters across various levels of governance, from municipal to national.

It is comprised of two components:

- 1) **IUU Fishing Index:** An evidence-based standardized scoring tool to allow for comparison of different areas in terms of their vulnerability to IUU fishing, current prevalence and magnitude of IUU fishing threats, and on-going responses to address this.
- 2) **IUU Fishing Assessment and Reduction Planning Guide:** A series of modules, workshop session plans, and forms to help develop more holistic IUU Fishing Reduction plans that maximize compliance promotion and effective enforcement.

The Global IUU Fishing Index rates countries in terms of IUU fishing risk based on 14 indicators (Macfadyen et al. 2019). The Philippine IUU Fishing Index uses the same framework but accounting for the Philippines' fishery context.

The IUU Fishing Index and Threat Assessment Tool is still a work-in-progress. For more information on the tool, please contact Rollan Geronimo of MERF, Inc. / USAID Fish Right at rollan.geronimo@gmail.com



The IUU Fishing Index and Threat Assessment Tool is not just the scoring index. It is a guide to developing IUU Fishing Reduction Plans and assessing interventions towards deterring, preventing, and eliminating IUU Fishing in Philippine waters.

Why do we need it?

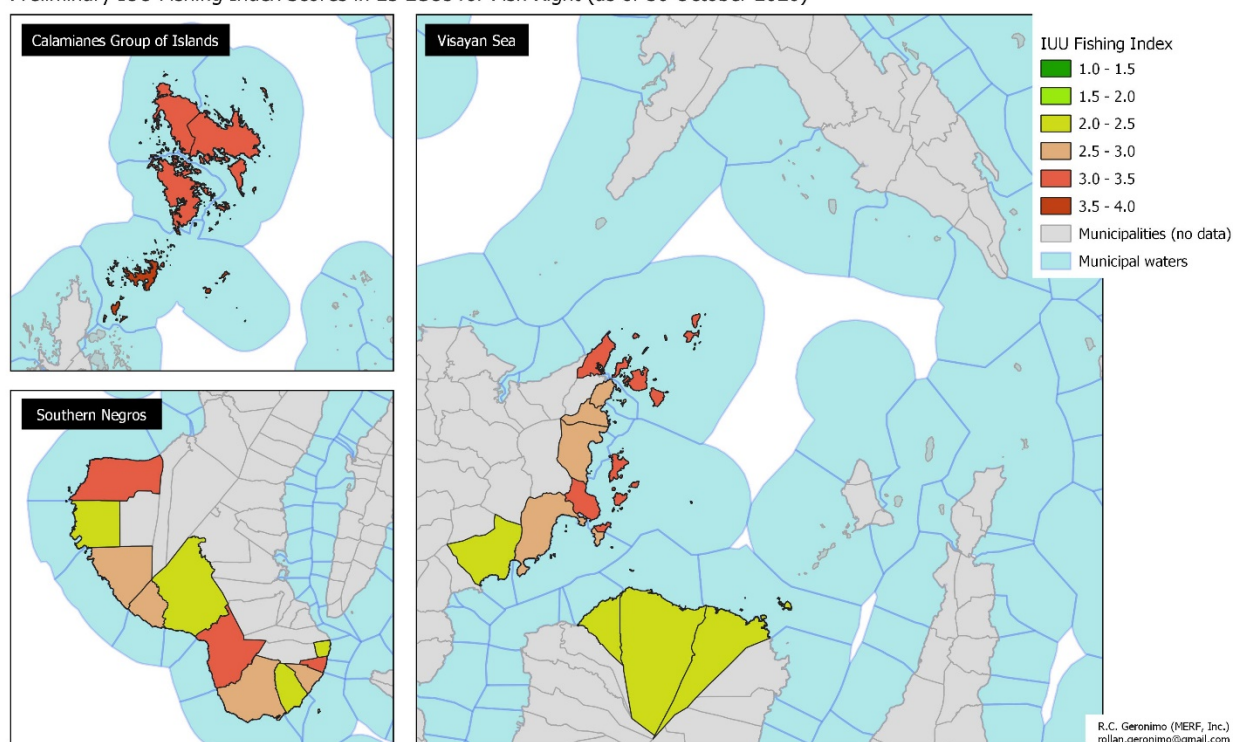
Current measures of IUU fishing are output-based (e.g., number of patrols, number of apprehensions, cases filed, settled, Fisheries Compliance Audit, etc.). While these are useful operational metrics, they do not inform us about the state of IUU fishing and its impacts. Other measures such as remote sensing / satellite data (e.g., VIIRS Boat Detection) and anonymous reports only give us a partial perspective on the IUU fishing occurrence / incidences. Having a standardized tool would provide a way of objectively assessing how well we are doing in terms of deterring, preventing, and eliminating IUU fishing in Philippine waters.

What is the scope?

Envisioned to apply to all waters within Philippine jurisdiction, the current version (1.0) of the Tool starts with the municipal waters, gradually expanding in scope to cover waters outside municipal jurisdiction within all 12 Fisheries Management Areas.

The IUU Fishing Index and Threat Assessment Tool is still a work-in-progress. For more information on the tool, please contact Rollan Geronimo of MERF, Inc. / USAID Fish Right at rollan.geronimo@gmail.com

Preliminary IUU Fishing Index Scores in 25 LGUs for Fish Right (as of 30 October 2020)



Sample result of the IUU Fishing Index scores in Fish Right partner LGUs. Note that these scores refer only to IUU fishing in municipal waters in the respective LGUs.

VULNERABILITY	PREVALENCE	RESPONSE
<ol style="list-style-type: none"> 1. Annual LGU income per km² water 2. Ratio of area of municipal waters to land area 3. Coastline configuration and presence of islands 4. Status of municipal water delineation and/or agreements with adjacent LGUs 5. PSA poverty incidence per municipality (latest is 2015) 	<ol style="list-style-type: none"> 1. Annual IUU fishing yield estimate per km² of municipal water (MT/km²/yr) 2. VBD/year (using a radiance cut-off of 10 nanowatts/m²/sr or greater) 3. Trend in IUU Fishing Prevalence 4. Repeat offenders based on apprehensions data 	<ol style="list-style-type: none"> 1. Operations of enforcement team 2. IEC campaign design and implementation 3. Number of "yes" relative to maximum FCA score of 95 4. IUU fishing data information system (collection to analyses) and application 5. IUU Fishing Reduction Plan

Current indicators used in the Philippine IUU Fishing Index

The IUU Fishing Index and Threat Assessment Tool is still a work-in-progress. For more information on the tool, please contact Rollan Geronimo of MERF, Inc. / USAID Fish Right at rollan.geronimo@gmail.com