



Republic of the Philippines
(Republic Act No. 7611)

PALAWAN COUNCIL FOR SUSTAINABLE DEVELOPMENT STAFF

January 20, 2021

Dir. MA. LOURDES G. FERRER, CESO IV
Regional Executive Director
DENR-MIMAROPA, Roxas Boulevard, Pasig City

Dear Dir. Ferrer:

This refers to the inquiry of Mr. David R. Baladad on the issuance of PCSD Resolution No. 18-622 which amended the ECAN Map of Tribal Ancestral Zone located in Barangays Campong-Ulay and Punta Baja, Rizal, Palawan.

The matter stated above was duly referred to the PCSD Legal and Inter-Governmental Affairs Committee for deliberation. During the discussion in the said meeting held last November 26, 2020, it was established that the PAMB endorsement was not approved because the DENR relied with the 2005 ECAN Map¹ which indicated that the project falls within the Core Zone.

On October 9, 2000, PCSD Proclamation No. 16² was issued declaring Certificate of Ancestral Domain Claim No. 100 located in So. Campong-Ulay, Punta Baja, Rizal, Palawan as Tribal Ancestral Zone. However, the same was not reflected and incorporated in the 2005 ECAN Map. On January 18, 2018, PCSD Resolution No. 18-622³ was issued entitled "Amending the ECAN Map of Tribal Ancestral Zone located in Barangays Campong-Ulay and Punta Baja, Municipality of Rizal, Palawan". By virtue of the said resolution, an updated ECAN Map⁴ was approved indicating therein that the area previously classified as falling within the Core Zone is now a Tribal Ancestral Zone. However, due to failure of communication between the PCSD and the DENR, the latter was not informed of the amended ECAN Map, hence its reliance to the 2005 approved ECAN Map.

The PCSD already informed SocResources through Mr. David Baladad of the circumstances surrounding this issue.

Thank you very much.

Very truly yours,


ATTY. TEODORO JOSE S. MATIA
Executive Director

¹ Annex A- 2005 ECAN Map of Rizal, Palawan

² Annex B- PCSD Proclamation No. 16

³ Annex C- PCSD Resolution No. 18-622

⁴ Annex D-Updated ECAN Map

Vision: Palawan, an innovative and dynamic global center of sustainable development
Mission: PCSDS as the driver of environmental conservation and inclusive development in Palawan,
a biosphere reserve and science-for-sustainability site, guided by the Strategic Environmental Plan

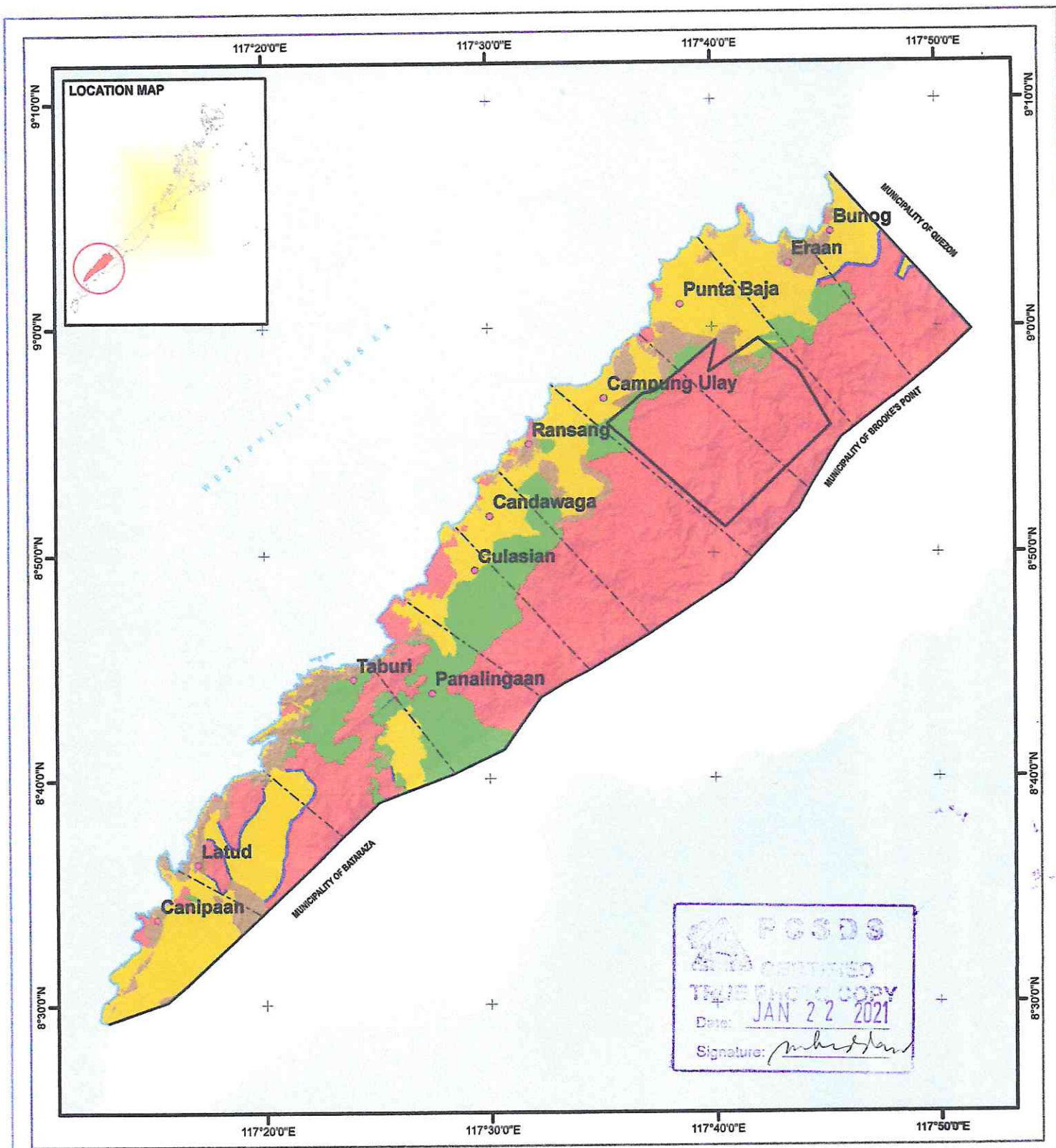
HEAD OFFICE:

PCSD Building, Sports Complex Road
Santa Monica Heights, Puerto Princesa City, Palawan, Philippines
☎ (+6348) 434-4235 Trunkline • (+6348) 434-4234 Telefax

Email: oed@pcsd.gov.ph • Website: www.pcsd.gov.ph | www.pkp.pcsd.gov.ph

METRO MANILA LIAISON OFFICE:

Room 109, G/F Westria Residences
#77 West Avenue, 1104 Quezon City, Philippines
Tel. No: (+632) 376-2061 / (+632) 376-2775



LEGEND

- Barangay Points
- Roads
- Coastline
- ▭ Tribal Ancestral Zone (TAZ)

Administrative Boundary

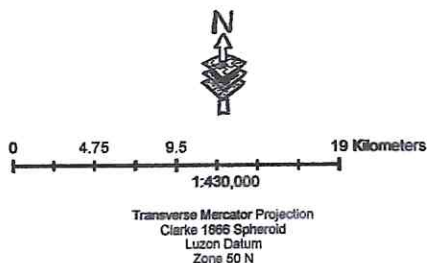
- Barangay Boundary
- Municipal Boundary

ECAN Zones (LGU adopted No.2005-69_Rizal) (PCSD Res. No. 06-285-Rizal)

ECAN Zones	Area (ha)
Core zone	13,814
Controlled use area	698
Traditional use area	274
Multiple use zone	166

2005 ENVIRONMENTALLY CRITICAL AREAS NETWORK (ECAN) MAP MUNICIPALITY OF RIZAL

(LGU Res. No. 2005-69)
(PCSD approved Resolution No. 06-285)



Sources of Information:

ECAN : PCSD
Roads : Prov't GIS
Barangay Points : Prov't GIS
Coastline : NAMRIA
Administrative Boundary : Provincial Assessor's Office

Notes:
Boundaries are not authoritative. Information on updated boundaries may be acquired from the respective source of information.

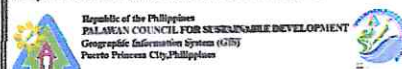
Users noting errors and omissions on this map are requested to inform the Palawan Council for Sustainable Development Staff.

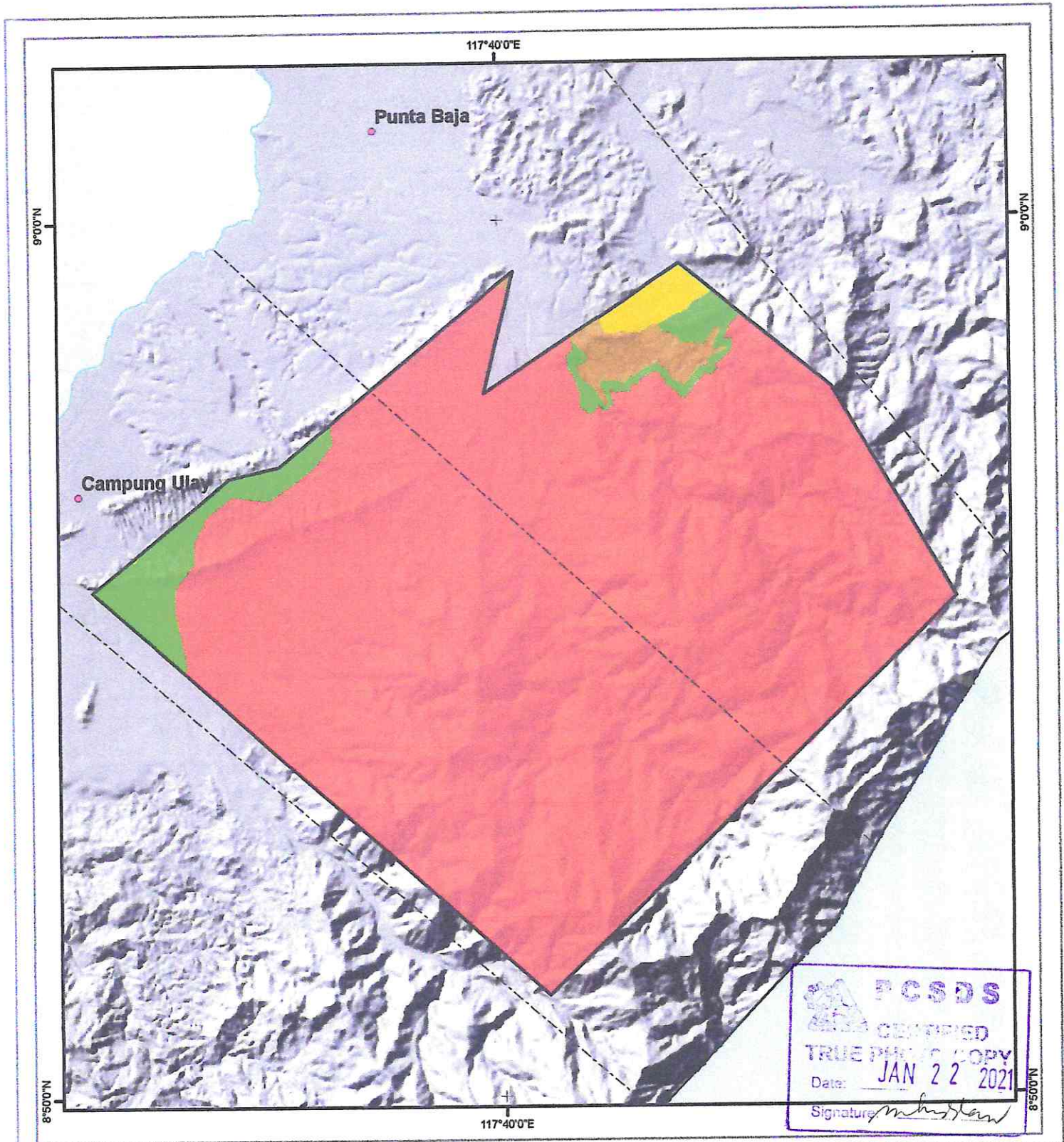
Reproduction in any form or by any means for commercial purposes is prohibited without written approval from PCSDS.

Map Layout : MAY ANN J. RAPIO

Approved by : MADRONO P. CABRESTANTE, JR.

Date printed : JANUARY 8, 2020 U:\PROJECTS\ECAN\PER MUNICIPALITY\AM RIZAL





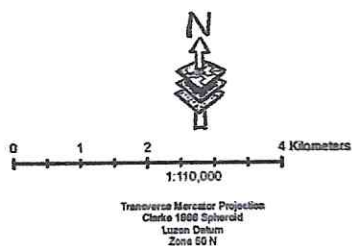
LEGEND

- Barangay Points
- Roads
- Coastline
- ▭ Tribal Ancestral Zone (Campung Ulay & Punta Baja)
- Administrative Boundary
- Barangay Boundary
- Municipal Boundary

ECAN Zones (LGU adopted No.2005-69_Rizal) (PCSD Res. No. 06-285-Rizal)

ECAN Zones	Area (ha)
Core zone	13,814
Controlled use area	698
Traditional use area	274
Multiple use zone	166

2005 ECAN MAP OF TRIBAL ANCESTRAL ZONE (TAZ) BARANGAY CAMPUNG ULAY & BARANGAY PUNTA BAJA MUNICIPALITY OF RIZAL, PALAWAN (LGU Res. No. 2005-69) (PCSD approved Resolution No. 06-285)



Sources of Information:

ECAN : PCSD
Roads : Prov GIS
Barangay Points : Prov GIS
Coastline : NAMRIA
Administrative Boundary : Provincial Assessor's Office

Notes:
Boundaries are not authoritative. Information on updated boundaries may be acquired from the respective source of information.

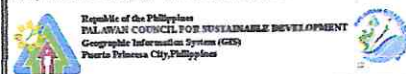
Users noting errors and omissions on this map are requested to inform the Palawan Council for Sustainable Development Staff.

Reproduction in any form or by any means for commercial purposes is prohibited without written approval from PCSDS.

Map Layout : MAY ANN J. RAPIO

Approved by : MADRONO P. CABRESTANTE, JR.

Date printed : JANUARY 8, 2020 1:PROJECT/ECAN PER SUBDIVISION 4 RIZAL





PCSD Proclamation No. 16

DECLARING CERTIFICATE OF ANCESTRAL DOMAIN CLAIM
No. 100 AS TRIBAL ANCESTRAL ZONE

Upon recommendation of the Palawan Special Committee Tribal Ancestral Zone (PSCTAZ) created by virtue of PCSD Resolution No. 99-147 and pursuant to the powers vested by Republic Act No. 7611, the Palawan Council for Sustainable Development hereby declares Certificate of Ancestral Domain Claim No. 100 located in So. Campung Ulay, Punta Baja, Rizal, Palawan an area of 7,530 hectares as Tribal Ancestral Zone of the Environmentally Critical Areas Network (ECAN). Such proclamation will promote the protection of the rights of the indigenous peoples in the aforementioned ancestral land claim.

CADC 100 shall have the following technical description:

CORNER	COORDINATES		DISTANCE
	LATITUDE	LONGITUDE	
1-2	8°55'47.468"	117°38'18.830	3,761.1 m.
2-3	8°57'06.404"	117°36'52.936"	1,079.6 m.
3-4	8°59'25.684"	117°37'27.512"	6,417.5 m.
4-5	8°59'25.974"	117°40'10.096"	2,676.3 m.
5-6	8°58'01.682"	117°39'47.982"	4,962.3 m.
6-7	8°59'29.613"	117°42'04.284"	4,088.4 m.
7-8	8°58'05.130"	117°43'47.669"	5,186.5 m.
8-9	8°55'39.224"	117°45'13.071"	12,071.0 m.
9-1	8°51'05.469"	117°40'29.673"	12,855.2 m.

In **WITNESS WHEREOF** I have hereunto set my hand and caused the seal of the PCSD to be affixed.

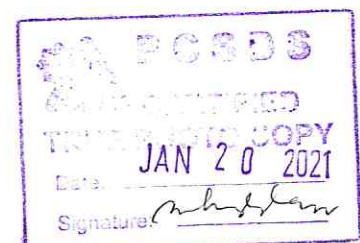
Done in Quezon City, Philippines this 9th day of October 2000.

Signed:

HON. ALFREDO E. ABUEG, JR.
Deputy Speaker, House of the Representatives
Chairman, PCSD

Attested:

ATTY. JOSELITO C. ALISUAG
Secretary, PCSD





Republic of the Philippines
(Republic Act No. 7611)

PALAWAN COUNCIL FOR SUSTAINABLE DEVELOPMENT STAFF

Excerpts from the Minutes of the 240th PCSD Regular Meeting
Governor's Conference Room, 2/F Provincial Capitol Building
Puerto Princesa City, Palawan
January 18, 2018

Present:

1. Gov. Jose Ch. Alvarez, Provincial Governor	Chair
2. Vice Gov. V. Dennis M. Socrates, Sangguniang Panlalawigan	Vice-Chair
3. Dir. Nelson P. Devanadera, Executive Director, PCSDS	Secretary
4. Hon. Lucena D. Demaala, Pres., League of Municipalities	Member
5. Atty. Jansen I. Jontila, NGO Representative	Member
6. LTGEN Rozzano D Briguez, Commander, WESCOM	Member
7. Mr. Bobby L. Castro, Representative, Business Sector	Member

Represented:

8. Usec. Miguel T. Cuna, Undersecretary, DENR Represented by Engr. Maria Dorica Naz-Hipe	Member
9. Usec. Ariel T. Cayan, Undersecretary, DA, Represented by Dir. Louella Rowena J. Lorenzana	Member
10. DDG Adoracion M. Navarro Deputy Director General, NEDA Represented by OIC Assistant RD Susan A. Sumbeling	Member
11. Mayor Lucilo R. Bayron, Mayor of Puerto Princesa City Represented by Atty. Carlo S. Gomez	Member

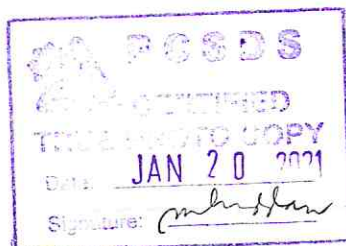
Absent:

12. Hon. Dennis M. Sabando, President, Liga ng mga Barangay	Member
---	--------

PCSD RESOLUTION NO. 18-622

"AMENDING THE ECAN MAP OF TRIBAL ANCESTRAL ZONE LOCATED IN BARANGAYS CAMPONG-ULAY AND PUNTA BAJA, MUNICIPALITY OF RIZAL, PALAWAN"

WHEREAS, Section 20 of Republic Act No. 7611 or the SEP for Palawan Act provides that the Palawan Council for Sustainable Development Staff (PCSDDS) shall serve as the regular professional support staff of the Council and shall provide the machinery to coordinate the policy and functions, implement programs, and organize such services as may be required by the Council;



Vision: Palawan, an innovative and dynamic global center of sustainable development
Mission: PCSDDS as the driver of environmental conservation and inclusive development in Palawan,
a biosphere reserve and science-for-sustainability site, guided by the Strategic Environmental Plan

Office of the Provincial Governor
Provincial Capitol Building
Puerto Princesa City, Palawan
Telephone: (048) 854-4234
Fax: (048) 854-4234
E-mail: pcscds@palawan.gov.ph
Website: www.palawan.gov.ph

WHEREAS, Section 7 to 11 of the same law provides for the establishment of an Environmentally Critical Areas Network (ECAN), the main strategy of the SEP Law, which is a graded system of protection and development control over the whole of Palawan, including its tribal lands, forests, mines, agricultural areas, settlement areas, small islands, mangroves, coral reefs, seagrass beds and the surrounding sea;

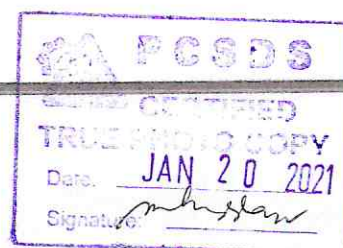
WHEREAS, the areas covered by the ECAN shall be classified into three (3) main components namely: (1) Terrestrial: which consists of the mountainous as well as ecologically low hills and lowlands areas of the whole province. It may be further subdivided into smaller management components; (2) Coastal/marine area: this area includes the whole coastline up to the sea. This is characterized by active fisheries and tourism activities; (3) Tribal Ancestral lands: these lands are the areas traditionally occupied by the cultural communities;

WHEREAS, Section 11 of the same law provides for the Tribal Ancestral Lands. These areas, traditionally occupied by cultural minorities, comprise both land and sea areas. These shall be treated in the same graded system of control and prohibition as in the others abovementioned except for strong emphasis in cultural considerations. The SEP, therefore, shall define a special kind of zonation to fulfil the material and cultural needs of the tribes using consultative processes and cultural mapping of the ancestral lands;

WHEREAS, Section 22 of PCSD Resolution No. 05-250 or the "Resolution Adopting the Revised Guidelines in Implementing the Environmentally Critical Areas Network, the Main Strategy of the Strategic Environmental Plan (SEP) for Palawan, amending PCSD Resolution Nos. 94-44 & 99-144" which provides for the Map Revision/Modification provides that subsequent revisions and updating of the ECAN Zoning Map may be undertaken by the Council staff upon acquisition of new and relevant information, in consultation with the local government units and concerned sectors in the province;

WHEREAS, Section 23 of the same law provides for the Declaration of the ECAN Zones Map which states:

"Upon recommendation by the PCSD Staff, the LGU through its Sangguniang Bayan shall submit to the PCSD its ECAN Zones Map (with the technical descriptions and the allowable activities for each zone) for approval. Such map shall be guided by the provisions of these guidelines. The same map shall be subject to progressive review and update by the PCSD Staff and the LGU through its ECAN Board upon acquisition of more information on the environment condition of the terrestrial and coastal/marine areas for review and final approval of PCSD. After PCSD approval of the ECAN Zones Map, the LGU shall support the PCSD action through adoption of the ECAN Zones Map by local resolutions and ordinances."



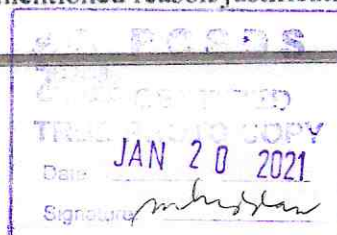
WHEREAS, on 9th day of October 2000, the Palawan Council for Sustainable Development (PCSD) through Proclamation No. 16 declared the Certificate of Ancestral Domain Claim No. 100 located at Bgys. Campong Ulay and Punta Baja, Rizal Palawan as Tribal Ancestral Zone, however, the same was not reflected on the approved ECAN Map of Rizal;

WHEREAS, the proposal for an amendment in the ECAN Map of the Tribal Ancestral Zone specifically in Barangays Campong-Ulay and Punta Baja, Municipality of Rizal, Palawan; to wit:

ZONE	ADOPTED ECAN ZONE (Has)	PROPOSED NEW ECAN ZONE (Has)	REASON/JUSTIFICATION
Core	13, 816.63	8,639.53	The area has poor, stunted and sparse stands of semi-deciduous forest which has a low generation capacity. open forest and brush/shrubs areas are also present, as well as there were areas that had already been stabilized or suitable to stable upland farming and traditional land use of the area had been stabilized. Thus, it is proposed to be re-zoned as Restricted Use Zone, Controlled Use Zone and Traditional Use Zone. Presence of Indigenous Community Conserved Areas.
Restricted Use	221	463.4	The area will serve as a belt between the close forest and open forest.
Controlled Use	751.65	4,960.19	The area has poor, stunted and sparse stands of semi-deciduous forest which has a low generation capacity as well as presence of open forest and brush/shrubs areas.
Traditional	0	892.11	There were areas that had already been stabilized or suitable to stable upland farming and there are presence of traditional land use of the area.
Multiple Use	166	0	The area is currently zoned as Multiple Use Zone. However, given that area is Ancestral Domain and no one could have a private title within it, the IP's/ICC's decided to re-zone the area.

WHEREAS, the proposal for an amendment in the ECAN Map of the Tribal Ancestral Zone located in Barangays Campong-Ulay and Punta Baja will promote the protection of the rights of the indigenous peoples in the aforementioned ancestral land claim;

WHEREAS, upon review and deliberation of the information on the environmental conditions, as well as material and cultural considerations for the IP's/ICC/s of the proposed amendments of the ECAN Map of the Tribal Ancestral Zone, this Council finds it necessary that the Tribal Ancestral Zone located at Barangays Campong-Ulay and Punta Baja, Rizal, Palawan be changed respectively for the above-mentioned reason/justification;




WHEREFORE, in consideration of the foregoing premises and on motion duly seconded, the Council resolves as it is hereby resolved **AMENDING**, the ECAN Map of the Tribal Ancestral Zone located in Barangays Campong-Ulay and Punta Baja, Rizal, Palawan;

RESOLVED FURTHER, the Local Government of Rizal, Palawan, is hereby directed in coordination with its ECAN Board, the PCSD Staff, and other concerned agencies and members of the community to undertake a field delineation and the preparation of the ECAN Zoning Plan;


RESOLVED FINALLY, that copies of this resolution be furnished to the Municipal Government of Rizal, Palawan, other concerned agencies and LGU's for their information and guidance;

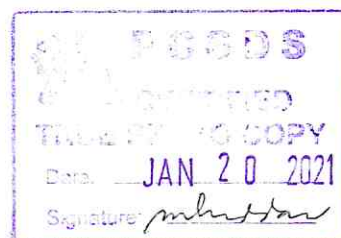
ADOPTED AND APPROVED this 18th day of January 2018 at Puerto Princesa City.

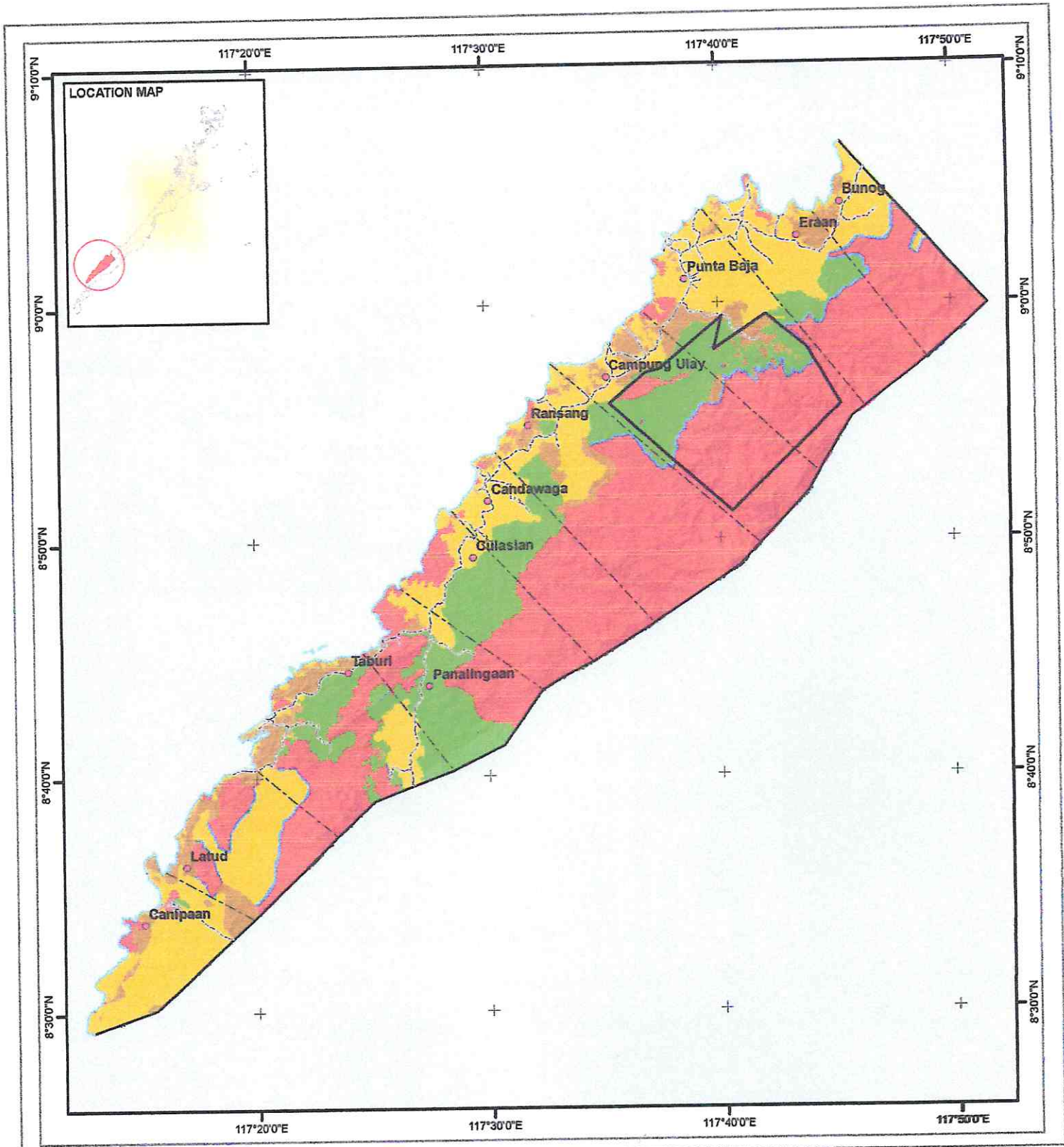
I hereby certify that the above-quoted resolution has been duly adopted by the PCSD on the 18th day of January 2018.


NELSON P. DEVANADERA
Secretary

ATTESTED BY:


JOSE CH. ALVAREZ
Chair, PCSD





LEGEND

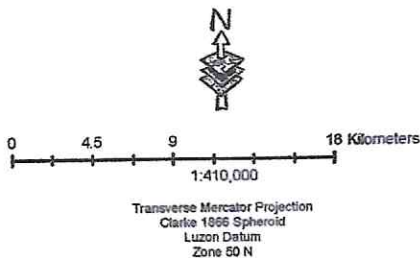
- Barangay Points
- Roads
- Coastline
- ▭ Tribal Ancestral Zone (Campung Ulay & Punta Baja)

Administrative Boundary

- - - Barangay Boundary
- Municipal Boundary

CADC - TAZ	Campung Ulay-Punta Baja	Area (ha)
Core zone		8,639.53
Restricted use area		463.4
Controlled use area		4,960.19
Traditional use area		892.11
Multiple use zone		0

**AMENDED
ENVIRONMENTALLY CRITICAL
AREAS NETWORK (ECAN) MAP
MUNICIPALITY OF RIZAL**
(PCSD approved Resolution No. 18-622)



Sources of Information:

- | | |
|-------------------------|--------------------------------|
| ECAN | : PCSD |
| Roads | : ProVI GIS |
| Barangay Points | : ProVI GIS |
| Coastline | : NAMRIA |
| Administrative Boundary | : Provincial Assessor's Office |

Notes:
Boundaries are not authoritative. Information on updated boundaries may be acquired from the respective source of information.

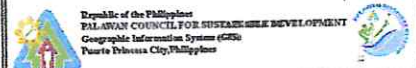
Users noting errors and omissions on this map are requested to inform the Palawan Council for Sustainable Development Staff.

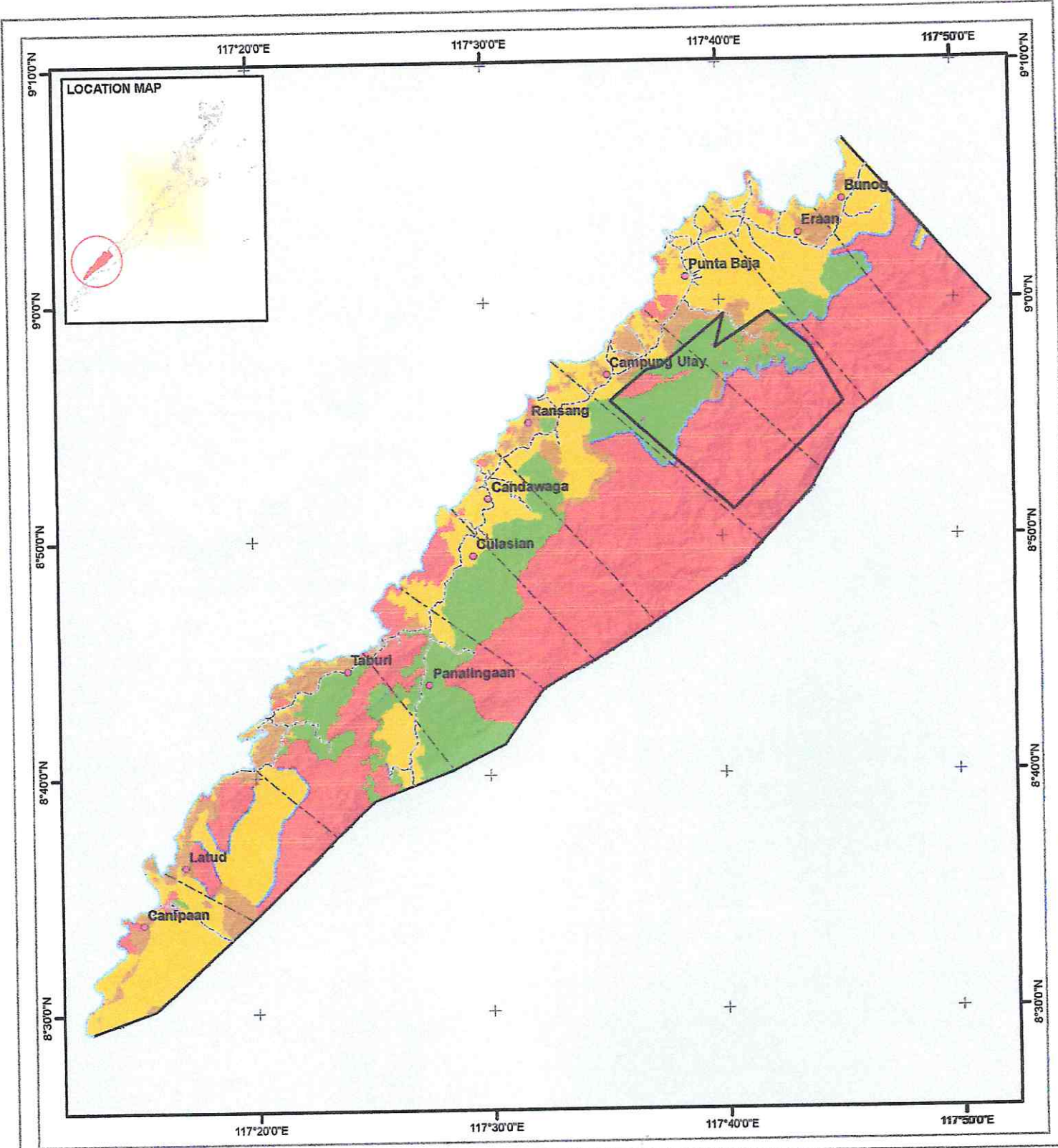
Reproduction in any form or by any means for commercial purposes is prohibited without written approval from PCSDS.

Map Layout : MAY ANN J. RAPIO

Approved by : MADRONO P. CABRESTANTE, JR.

Date printed : JANUARY 21, 2021 \PROJECT\ECAN FOR MUNICIPALITY 4 2018 WHOLE





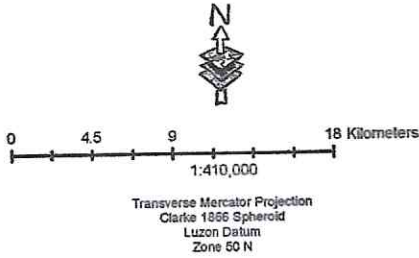
LEGEND

- Barangay Points
- Roads
- Coastline
- ▭ Tribal Ancestral Zone (Campung Ulay & Punta Baja)

- Administrative Boundary**
- - - Barangay Boundary
 - Municipal Boundary

CADC - TAZ	Campung Ulay-Punta Baja	Area (ha)
 Core zone		8,639.53
 Restricted use area		463.4
 Controlled use area		4,960.19
 Traditional use area		892.11
 Multiple use zone		0

**AMENDED
ENVIRONMENTALLY CRITICAL
AREAS NETWORK (ECAN) MAP
MUNICIPALITY OF RIZAL**
(PCSD approved Resolution No. 18-622)



Sources of Information:

- | | |
|-------------------------|--------------------------------|
| ECAN | : PCSD |
| Roads | : Prov GIS |
| Barangay Points | : Prov GIS |
| Coastline | : NAMRIA |
| Administrative Boundary | : Provincial Assessor's Office |

Notes:
Boundaries are not authoritative. Information on updated boundaries may be acquired from the respective source of information.

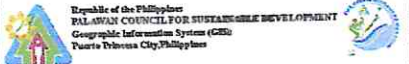
Users noting errors and omissions on this map are requested to inform the Palawan Council for Sustainable Development Staff.

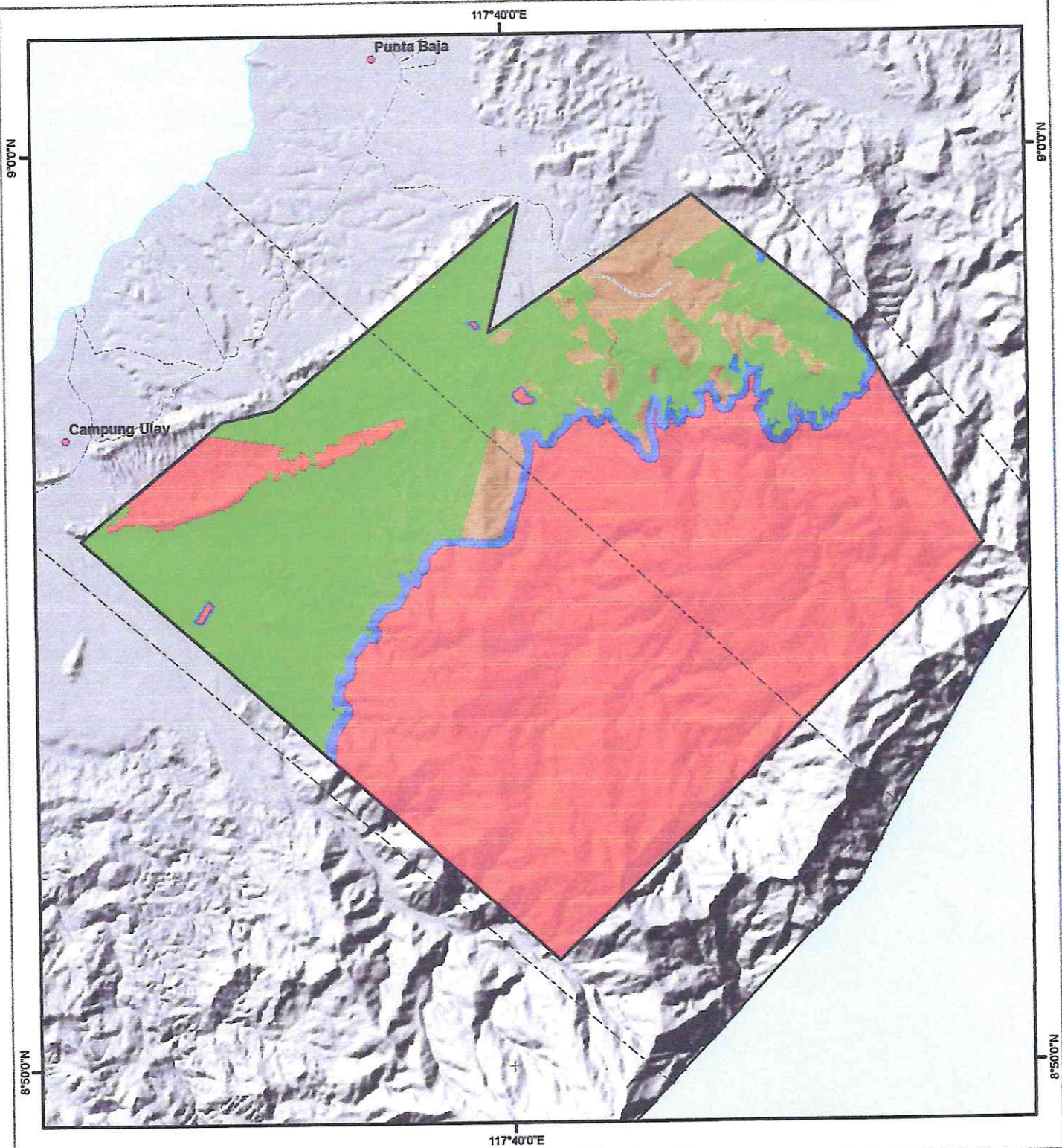
Reproduction in any form or by any means for commercial purposes is prohibited without written approval from PCSDS.

Map Layout : MAY ANN J. RAPIO

Approved by : MADRONO P. CABRESTANTE, JR.

Date printed : JANUARY 21, 2021 \PROJECT\ECAN FOR MUNICIPALITY\4 2018_WHOLE





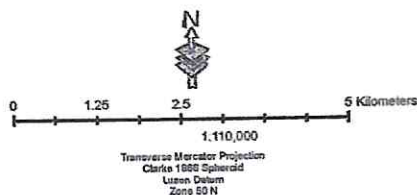
LEGEND

- Barangay Points
- Roads
- Coastline
- Tribal Ancestral Zone (TAZ)

- Administrative Boundary**
- Barangay Boundary
 - Municipal Boundary

CADC - TAZ	Campung Ulay-Punta Baja	Area (ha)
Core zone		8,639.53
Restricted use area		463.4
Controlled use area		4,960.19
Traditional use area		892.11
Multiple use zone		0

**AMENDED
ENVIRONMENTALLY CRITICAL
AREAS NETWORK (ECAN) MAP OF
TRIBAL ANCESTRAL ZONE (TAZ)
BARANGAY CAMPUNG ULAY &
BARANGAY PUNTA BAJA
MUNICIPALITY OF RIZAL,
PALAWAN**
(PCSD approved Resolution No. 18-622)



Sources of Information:

- ECAN : PCSD
- Roads : Prov't GIS
- Barangay Points : Prov't GIS
- Coastline : NAMRIA
- Administrative Boundary : Provincial Assessor's Office

Notes:
Boundaries are not authoritative. Information on updated boundaries may be acquired from the respective source of information.

Users noting errors and omissions on this map are requested to inform the Palawan Council for Sustainable Development Staff.

Reproduction in any form or by any means for commercial purposes is prohibited without written approval from PCSDS.

Map Layout : MAYANN J. RAPIO

Approved by : MADRONO P. CARRETEANTE, JR.

