



Background of 2020 Census of Population and Housing

Raymond R. Lapus
Senior Statistical Specialist

Regional Data Dissemination Forum on the
2020 Census of Population and Housing
Video Teleconferencing via Zoom and Facebook Live
27 July 2021

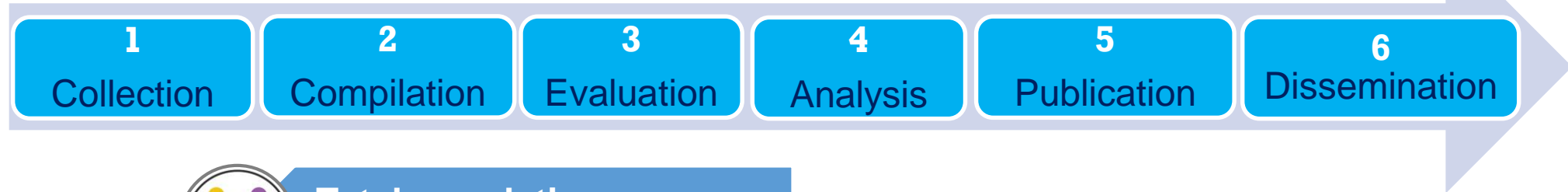


Outline

- 1. Overview and Objectives of the 2020 CPH**
- 2. Uses and Importance of Census Data**
- 3. Legal Bases of the 2020 CPH**
- 4. Reference Period**
- 5. Scope and Coverage**

The 2020 Census of Population and Housing

It is a nationwide government undertaking that involves:



Total population
and their characteristics



Total housing units
and their characteristics



Other household
characteristics



Barangay characteristics



- **Barangay**
- **City/Municipality**
- **Province**
- **Region**

The 2020 Census of Population and Housing

The **2020 CPH** is designed primarily to take an inventory of the total population and housing units in the Philippines.

INFORMATION TO BE COLLECTED

- Demographic characteristics
- Socio-economic characteristics
- Cultural characteristics
- Structural characteristics and facilities of the housing units

The 2020 Census of Population and Housing

In **September 2020**, the Philippine Statistics Authority (PSA) conducted the 2020 CPH in all barangays nationwide.



- ❖ First census
 - ❖ 15th census of population
 - ❖ 7th census of housing
 - ❖ First census to adopt in limited scale the CAPI technique
 - ❖ Majority of the areas adopted the traditional Paper and Pencil Interview (PAPI) technique

Objective

The 2020 CPH aims to provide government planners, policy makers, and administrators with population and housing data on which to base their social and economic development plans, policies, and programs.

Objective

Specific Objectives

- The 2020 CPH seeks to gather data on demographic, socio-economic, household-level, housing, and barangay characteristics
- The 2020 CPH listing of households will serve as sampling frame for use in household-based surveys

Uses and Importance of Census Data



GOVERNMENT

- 1 allocation of resources and revenues
- 2 formulation of policies and plans concerning various segments of the population
- 3 development of policies and programs relative to the delivery of basic services
- 4 providing inputs to monitor and evaluate the Philippine Development Plan (PDP) and monitoring the country's attainment of Sustainable Development Goals (SDG)
- 5 creation/conversion of political and administrative units
- 6 redistricting and apportionment of congressional seats

Uses and Importance of Census Data



BUSINESS & INDUSTRY

- 1 identification of sites for establishing businesses
- 2 determination of consumer demands for various goods and services
- 3 improvement of supply of labor for the production and distribution of goods and services

Uses and Importance of Census Data

RESEARCH & ACADEMIC INSTITUTIONS



1

conduct of researches on population housing, and related disciplines

2

study of population growth and geographic distribution as bases in preparing projections at the national and sub national levels

Authority for the Conduct of the 2020 CPH



The authority and mandate of the PSA to conduct the 2020 CPH emanates primarily from:

- **Republic Act (RA) No. 10625**
- **Batas Pambansa (BP) Blg. 72**
- **Executive Order No. 352**

Reference Period of the 2020 CPH

May 2020						
MON	TUE	WED	THU	FRI	SAT	SUN
				1	2	3
4	5	6	7	8	9	10
11	12	13	14	15	16	17
18	19	20	21	22	23	24
25	26	27	28	29	30	31
10th: Mother's Day 25th: Memorial Day 31st: Pentecost						

**May 1, 2020 (Friday)
as of 12:01 a.m.**

Scope and Coverage

The enumeration units for the 2020 CPH are:

- **Households**
- **Housing Units**
- **Institutional Living Quarters (ILQ)**

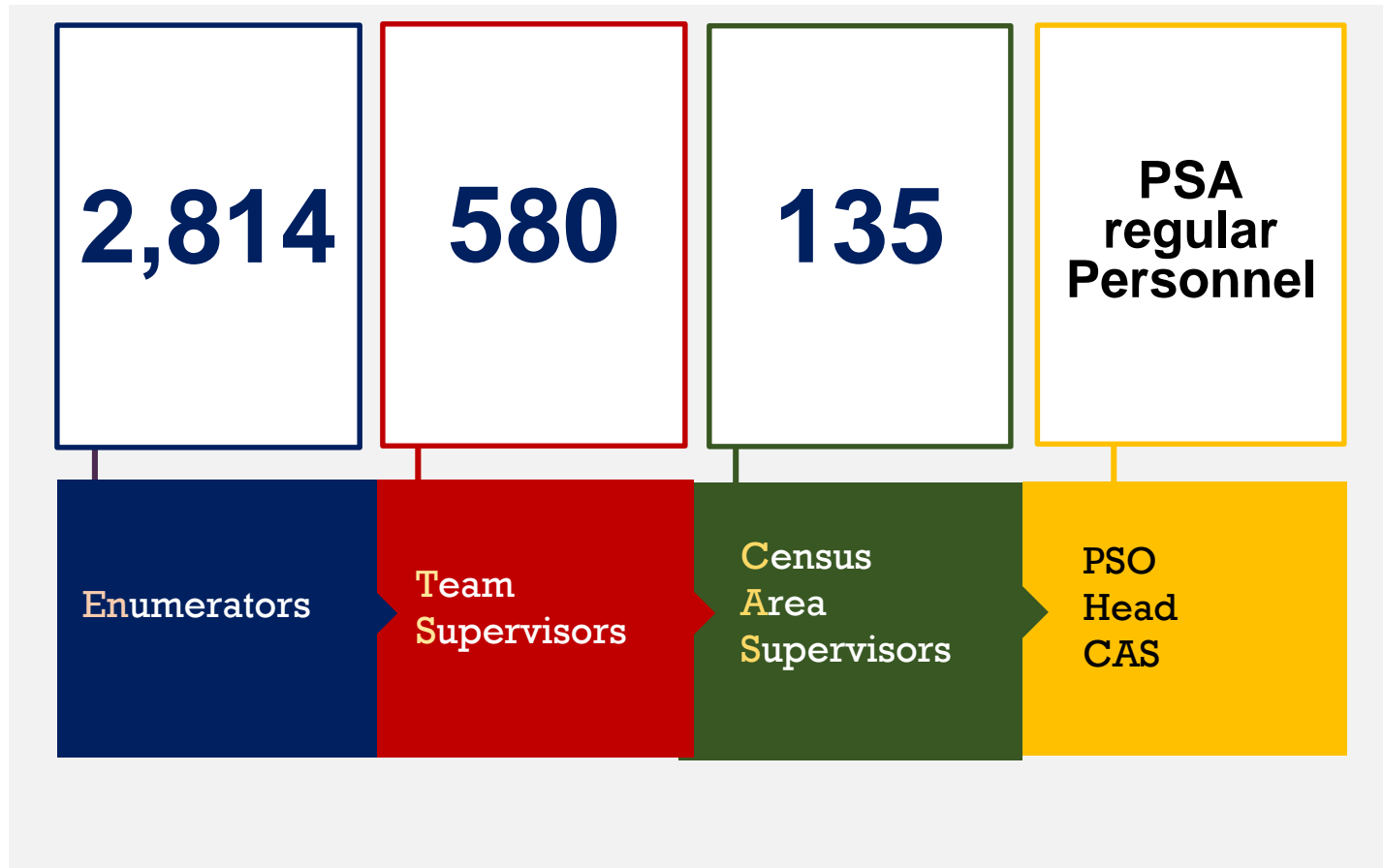


Thus, all households, housing units and ILQs in all barangays throughout the country were listed and enumerated.

Scope and Coverage

Filipinos residing in Philippine embassies, missions, and consulates abroad, as well as homeless population were listed and enumerated.

How many were involved?





MARAMING SALAMAT PO!



<https://psa.gov.ph>



<https://openstat.psa.gov.ph>



<https://twitter.com/PSAgovph>



<https://facebook.com/PhilippineStatisticsAuthority>

<https://psa.gov.ph/population-and-housing>