



# MEETING OF RDC FOR THE REVIEW OF DRAFT FINAL REPORT

**EL NIDO AND CORON**

**08 April 2021**

Formulation of Tourism Infrastructure Development Plans  
for Transforming Communities towards  
**Resilient, Inclusive and Sustainable Tourism  
(TouRIST) Program**



T. A. M. Planners Co.





# OUTLINE

- 1 INTRODUCTION**
  - 1 PROJECT RATIONALE
- 2 SITUATIONAL ANALYSIS – EL NIDO**
  - 1 SWOT ANALYSIS
- 3 TOURISM INFRASTRUCTURE DEVELOPMENT PLAN – EL NIDO**
  - 1 SECTORAL PLANS
  - 2 LIST OF PAPs
- 4 PRE-FEASIBILITY STUDY – EL NIDO**
  - 1 SELECTION OF PAPs
  - 2 DEVELOPMENT OF WATER SUPPLY SYSTEM
  - 3 DEVELOPMENT OF SEWERAGE SYSTEM
- 5 SITUATIONAL ANALYSIS – CORON**
  - 1 SWOT ANALYSIS
- 6 TOURISM INFRASTRUCTURE DEVELOPMENT PLAN – CORON**
  - 1 SECTORAL PLANS
  - 2 LIST OF PAPs
- 7 PRE-FEASIBILITY STUDY – CORON**
  - 1 SELECTION OF PAPs
  - 2 DEVELOPMENT OF SOLID WASTE MANAGEMENT
  - 3 DEVELOPMENT OF INTEGRATED LAND TRANSPORT TERMINAL



# INTRODUCTION

## PROJECT RATIONALE



## Introduction: Project Rationale

TDGVA to GDP **increased** from 12.3% in 2018 to 12.7% in 2019 (Php 2.48 trillion contribution)

Tourism industries **employed 13.5%** of all total employment in the Philippines in 2019

TDGVA and Employment from Tourism in 2020 is expected to decline due to the COVID-19

Philippine tourism sector still lags behind its Southeast Asian counterparts,



***“Develop a globally competitive, environmentally sustainable and socially responsible tourism industry that promotes inclusive growth through employment generation and equitable distribution of income thereby contributing to building a foundation for a high-trust society.”***

*– Department of Tourism. National Tourism Development Plan (2016-2022)*

Transforming Communities towards Resilient, Inclusive, and Sustainable Tourism (**TouRIST**) Program (2019-2022) addresses key constraints



Underdeveloped state of transport infrastructure & tourism facilities



Inconsistent standards in tourism facilities and services



Low awareness of the country's tourism products/destinations



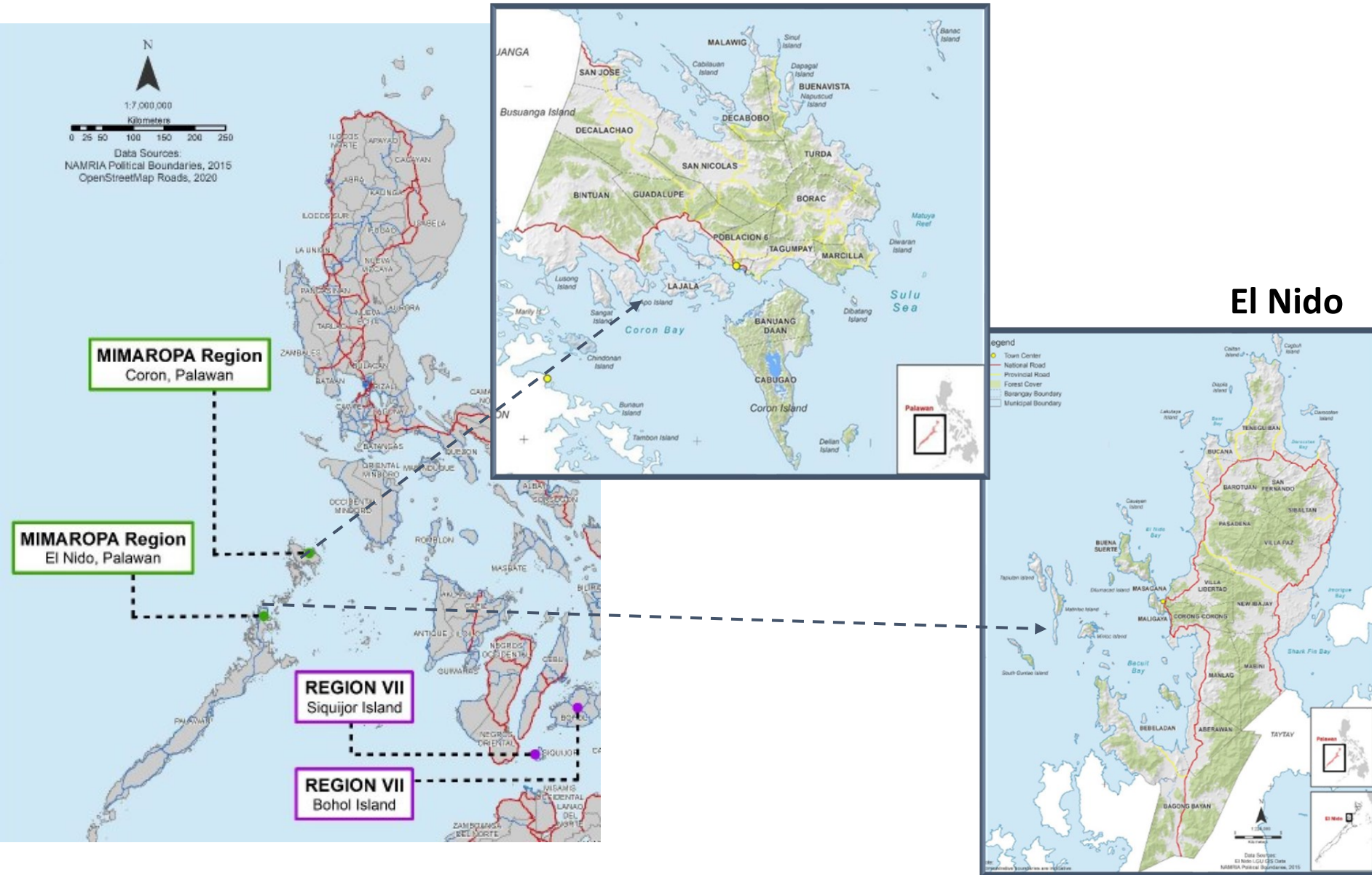
Insufficient value for money offers in travel packages



Vulnerability to natural hazards and weak capacity at the local level for disaster risk mitigation

## Introduction: Project Rationale

# Coron





# EL NIDO

# SITUATIONAL ANALYSIS

## SWOT ANALYSIS





## Situational Analysis: SWOT Analysis

**Strengths** - internal factors, characteristics, resources and capabilities of a TSA that can be used as a competitive advantage.

S

**Weaknesses** - internal factors and qualities that prevent the TSA from accomplishing its mission and achieving its full potential.

Weaknesses contribute to deterioration of success and growth

W

O

**Opportunities** - to favorable external factors that a TSA can pursue and exploit to gain benefit.

T

**Threats** - refer to external factors that have the potential to harm and reduce the TSA's performance

# STRENGTHS

## Situational Analysis: SWOT Analysis

### Tourism and Economic

- Presence of strong enterprise association with subsectors of tourism enterprises
- Willingness of tourism enterprises to collaborate with public sector regarding illegal constructions in forest lands
- Willingness of tourism enterprises to adopt innovative approaches
- Most of the big resorts have their own power supply facilities

### Environmental and Land Use

- Presence of multiple islands with high marine biodiversity and presence of national and eco-parks
- Rich in natural resources – timber, fisheries

### Infrastructure

- Easily accessible via plane, ferry, presence of cruise ships

### Institutional, Social and Gender

- Presence of underwater historic sites.
- Presence of unique cultural assets from Indigenous tribes.



# WEAKNESSES

## Situational Analysis: SWOT Analysis

### Tourism and Economic

- Low tourism enterprise production, quality and service skills
- Rapid and unsustainable tourism and urban development
- High dependence on marine-based products, lack of alternatives

### Environmental and Land Use

- Pollution of the marine resources
- Highly sloping features making mobility in the island challenging
- Low resilience to natural disaster and climate change

### Infrastructure

- Poor road infrastructure to outlying rural areas and Inadequate road network, transportation, and health facilities
- Unstable power and water supply and unreliable internet

### Institutional, Social and Gender

- Weak institutional and management capacities
- Presence of Informal settlers and high incidence of poverty in rural barangays
- Weak capacity of existing education and skill training institutions

# OPPORTUNITIES

## Situational Analysis: SWOT Analysis

### Tourism and Economic

- Strong ecotourism potential
- Web-services and cashless transaction systems are becoming easier to adopt and implement to enhance visitor experience
- Inclusion of Palawan in List of Best Islands in Asia
- Developing an enterprise network-based skills training model supported by facility and equipment upgrading financing mechanism
- Adopting sustainable production and consumption practices by tourism enterprises

### Environmental and Land Use

- Use of renewable energy
- Developing an eco-label for El Nido as an ecotourism destination including 'green' certification of tourism enterprises

### Infrastructure

- Future connection to Palawan's 69 kV Main Power Grid

# THREATS

## Situational Analysis: SWOT Analysis

### **Tourism and Economic**

- Un-controlled/ un-coordinated development
- Similar tourism package exists in nearby municipalities
- Increasing tourist arrivals may exceed the carrying capacity of the island

### **Environmental and Land Use**

- Poaching of endangered species and illegal trade of forest products
- Vulnerable to natural hazards and climate change

### **Infrastructure**

- Improvement of support infrastructure may result to overdevelopment

### **Institutional, Social and Gender**

- Threat of pandemics such as COVID - 19



# EL NIDO

# TOURISM INFRASTRUCTURE

# DEVELOPMENT PLAN

## SECTORAL PLANS



## Sectoral Plans

Sector	Objectives	Strategies
<b>Power and Energy</b>	1. To provide reliable, sustainable, good quality and resilient power supply service	1. Retention of existing NPC-SPUG Diesel Power Plant even after the interconnection of El Nido to the main Palawan Power Grid
		2. Palawan Electric Cooperative (PALECO) to conduct Competitive Selection Processes (CSPs) for the power supply requirements of their franchise area
	2. To expand the accessibility and availability of power within El Nido	1. PALECO to expand their distribution system to serve the remaining 53% of the households/areas that are unserved within their franchise area
	3. To improve the availability and quality of the power distribution service within the El Nido mainland.	1. PALECO to contract out to the various barangays some of its regular maintenance activities
		2. Capacity building of PALECO technical personnel
	4. To improve travel safety and security without increasing commercial power demand (and reduce the production of GHG from the environment)	1. Illuminate the main thoroughfares and roads leading to tourism sites
		2. Coordinate w/ Barangay officials.
	5. To reduce the volume of wastes that are being dumped in the sanitary landfill and at the same time, produce energy	1. Provincial/Municipal Government to conduct Competitive Selection Process (CSPs)

## Sectoral Plans

Sector	Objectives	Strategies
<b>Flood Management System</b>	1. To attain a flood-free and climate change-resilient El Nido.	1. Develop local ordinances to support correct disposal of solid waste and strict compliance on building code
		2. Create a comprehensive flood management feasibility study that will identify the network of drainage
		3. Preparation of DRRM mitigation plans for the island
	2. To create flood resilient communities through alternative mitigation measures	1. Development of non-structural mitigation measures that can also help the boost agriculture and the environment 3. Development of alternative waterways for flood mitigation and irrigation
<b>Solid Waste Management</b>	1. To comply with RA 9003 re: disposal system	1. Closure of open dumpsite.
		2. Prepare the FS and Detailed Engineering Design of SLF.
	2. To improve the collection service	1. Inventory of existing garbage collection system.
		2. Prepare the list of equipment required and specification.
	3. To increase awareness of RA 9003 re: waste segregation, recycling, best practices on waste disposal.	1. Identify /determine the IEC materials and methodology to be used i.e distribution of materials, pulong–pulong, etc.
		2. Coordinate with the Barangay officials.



## Sectoral Plans

Sector	Objectives	Strategies
<b>Sanitation</b>	1. All population using safely managed sanitation services, with handwashing facility and water by 2030 (SDG 6.2).	1. Increase access to improved sanitation facilities.
		2. Septage management program available for <b>ALL</b> households in the entire Province of Bohol.
		3. Sewerage system and wastewater treatment facilities operational in priority areas.
<b>Connectivity and Transport</b>	1. To provide congestion free, traffic safety and tourist friendly	1. Managed Growth at the Urban Core
	2. To improve accessibility, mobility, and connectivity to the identified tourism development areas	1. Infrastructure upgrade
		2. Development of Coastal and Marine Sites
		3. Development of Terrestrial Sites
		4. Agriculture and Fishery Development
		5. Satellite Settlements
<b>Water Supply</b>	1. By 2030, achieve universal and equitable access to safe and affordable drinking water for all	6. Development in San Fernando
		1. Increase the number of households with access to water supply.
		2. Identify and develop additional future sources.
		3. Maintain water quality within the limits of the PNSDW.
		4. Maintain adequate supply and pressure in the urban area.



# EL NIDO

# TOURISM INFRASTRUCTURE DEVELOPMENT PLAN

**LIST OF PROGRAMS,  
ACTIVITIES, PROJECTS (PAPs)**



## List of PAPs – Transport and Connectivity

No.	Sector	Programs / Activities / Projects	General Description	Proposed by
1.	Transportation	Manlag-Libertad Bypass Road	Construction of Manlag-Libertad Bypass Road that is intended for cargo trucks going to San Fernando Port.	LGU
2.	Transportation	Modernization of Tourist Bangka	Design and upgrade motorized wooden-hulled Bangka for tourist including its facilities.	Study Team
3.	Transportation	San Fernando Port Development	Development of San Fernando Port to serve as the primary commercial port which caters to RORO operations.	PPA
4.	Transportation	Street lighting	Establishment of streetlamps in El Nido.	LGU / TIEZA
5.	Transportation	Pontoon and Beachfront Development	Construction of Boat Terminal at Barangay Corong-Corong, development of floating pontoon and support facilities at Barangay Masagana and improvement of the existing floating pontoon area at Poblacion Beach.	LGU
6.	Transportation	El Nido Terminals	Construction of El Nido Integrated Transport Terminal, El Nido Airport Development, Seaport Development	Study Team
7.	Transportation	Poblacion Facilities	Construction of transport terminals & parking facilities, street lighting & pedestrian facilities	Study Team

## List of PAPs – Transport and Connectivity

No.	Sector	Programs / Activities / Projects	General Description	Proposed by
8.	Transportation	Development of Coastal and Marine Sites	Construction of coastal roads (Bucana, Bebeladan, New Ibajay), boat landing facilities in El Nido Day and Bacuit Bay	Study Team
9.	Transportation	Development of Terrestrial Sites	Road construction/upgrading to terrestrial sites (Pasadeña, Barotuan, Teneguiban, New Ibajay)	Study Team
10.	Transportation	Agriculture and Fishery Development	Construction of farm to market roads (Bucana, San Fernando, Villa Paz)	Study Team
11.	Transportation	Satellite Settlements	Road pavement upgrading (Bucana, San Fernando, Villa Paz) Construction of transport terminals (Bucana, San Fernando, Villa Paz)	Study Team

## List of PAPs – Tourism Services

No.	Sector	Programs / Activities / Projects	General Description	Proposed by
12.	Tourism	Ecotourism Centers	Construction of centralized Ecotourism Development Fund (ETDF) Collection Building.	LGU
13.	Tourism	Development of Sibaltan Heritage Center	Development of heritage tourism in El Nido.	LGU
14.	Land Use	Redevelopment of Town Center	Development of interventions to improve internal and external mobility, urban design, waste supply, drainage, sewerage and septage treatment, solid waste management, and health.	LGU
15.	Environment	Ecosystem Rehabilitation Program	Rehabilitation and monitoring works of the ecosystem.	LGU
16.	Economic	Agri-Business Center	A center for the development, production, storage, and marketing of higher-value processed goods harnessing El Nido's abundant indigenous raw materials and unique local skills.	LGU
17.	Social	Convention Center	Construction of Convention Center in Villa Libertad.	LGU

## List of PAPs – Support Services

No.	Sector	Programs/ Activities/ Projects	General Description	Proposed by
18.	Water Supply	Water Supply Development Plan	Will provide 3667 m <sup>3</sup> /day of water to 4663 households in the four urban barangays and the rural barangays of Pasadena, Villa Libertad and New Ibajay.	Provincial LGU
19.	Water Supply	Water Treatment Facilities Upgrade	Upgrade existing treatment facilities for the urban barangays; Installation of treatment facilities at existing Level II Systems without treatment	LGU
20.	Sanitation	Septage Treatment Facility	600 m <sup>3</sup> /day septage treatment facility project by the LGU in the current dumpsite in Villa Libertad.	LGU
21.	Sanitation	Sewerage System	New sewerage system and 2,400 m <sup>3</sup> /day sewage treatment plant that will provide service to the urban areas of Maligaya, Masagana and Buena Suerte; sewer pipelines also planned for Barangay Corong-Corong.	Provincial LGU
22.	Sanitation	Improvement of Esteros	El Nido Jct-New Ibajay Road leading to Elli Cave, Barangay New Ibajay.	LGU / DOT / DENR
23.	Sanitation	Communal Toilet Facilities	Construction of communal toilet facilities with water and handwashing facilities in public areas including parks, public beach areas, public transportation terminals, public markets and schools and improved toilet facilities in key tourist island destinations.	Study Team
24.	Flood Management	Drainage Improvement in Poblacion	Street drainage works that cover the 3 barangays with most densely populated urban areas.	LGU



## List of PAPs – Support Services

No.	Sector	Programs/ Activities/ Projects	General Description	Proposed by
25.	Flood Management	Drainage Improvement along National Highway	Rehabilitation or replacement of existing culverts and the construction of longitudinal trenches along the National Road.	DPWH
26.	Flood Management	Impounding Dams	Construction of impounding dams that will be mainly used for irrigation and flood management	Study Team
27.	Energy	Palawan Grid Transmission Line Extension Projects	Establishment of Taytay-El Nido transmission line.	DOE / NPC
28.	Energy	Beach Light with Solar Power Units	Establishment of beach light and solar power units in Barangay Buena Suerte.	LGU / DoT / TIEZA
29.	Energy	Renewable energy power supply Systems	Construction of renewable energy power supply systems, such as solar, wind.	Study Team
30.	Energy	Improvement of Existing Health Facilities	Building and facilities improvement.	LGU
31.	Energy	Testing Facility for Infectious Diseases	New laboratory building for testing of infectious diseases like COVID-19.	LGU



# PRE-FEASIBILITY STUDIES

## EL NIDO



## Ranking of the Short-Listed PAPs

Shortlisted PAPs	Score	Rank
Construction of Renewable Energy Power Supply Systems, such as solar and wind	91.79	1
Water Supply Development Plan (Nacpan, Bgy. Bucana)*	91.43	2
Sewage Treatment Plant (Nacpan, Duli)*	90.09	3
Testing Facility for Infectious Diseases	89.38	4
Agri-Business Center (Lio Farm, Villa Libertad / Pasadena)	88.84	5
Pontoon and Beachfront Development (Poblacion-Corong-corong)	86.96	6
Redevelopment of Town Center	85.00	7
Manlag – Villa Libertad Bypass Road	84.82	8
Ecotourism Center (Villa Libertad)	84.02	9
Modernization of Tourist Bangka	81.52	10
Convention Center (Villa Libertad)	81.52	11
Development of Sibaltan Heritage Center	80.09	12

\* Highlighted PAPs – PAPs with Pre-Feasibility Study



# EL NIDO

# PRE-FEASIBILITY STUDY

## DEVELOPMENT OF

## WATER SUPPLY SYSTEM



## Summary of Pre-FS: Recommendations

### Development Options

Sources of water supply for Sitio Calitang and Nacpan for **2020 to 2030** are wells – Barotuan River and forest reserve Barotuan and Pasadena

- **Scheme 1** – Three wells with reservoir at elevation 57 masl
- **Scheme 2** – Three wells with reservoir at elevation 25 masl and a Booster Pump Station

For water demand beyond **2030 to 2040**, an impounding dam or reservoir may be constructed upstream of Barotuan River

### Recommendations

Scheme 1 is lower than Scheme 2 by about 5% in terms of capital costs (**Php 77.66 Million**) of facilities and operations and maintenance costs (**Php 31.18 Million**)

**Scheme 1 is the recommended scheme** for the proposed water supply system of Sitio Calitang and Nacpan – uses gravity system which is **easier to operate**

A **water resources study** to validate source development in Barotuan River for construction of reservoir for use beyond 2030 should be conducted











# EL NIDO

# PRE-FEASIBILITY STUDY

## DEVELOPMENT OF SEWERAGE SYSTEM





## Summary of Pre-FS: Recommendations

### Development Options

The proposed sewerage system will focus on **Nacpan Beach and Sitio Calitang** in Barangay Bucana, El Nido

Phase 1 shall focus on the **improvement and augmentation** of the existing sanitation facilities in the sitio

Phase 2 will focus on the **operations** of the proposed sewage treatment plant

Two options considered were for sanitation alternatives: Nido: **Option 1** - Fully Mechanized System and **Option 2** - Non-Mechanized System

### Recommendations

**Extension of existing Septage Management Program** of El Nido to serve households of Barangay Bucana

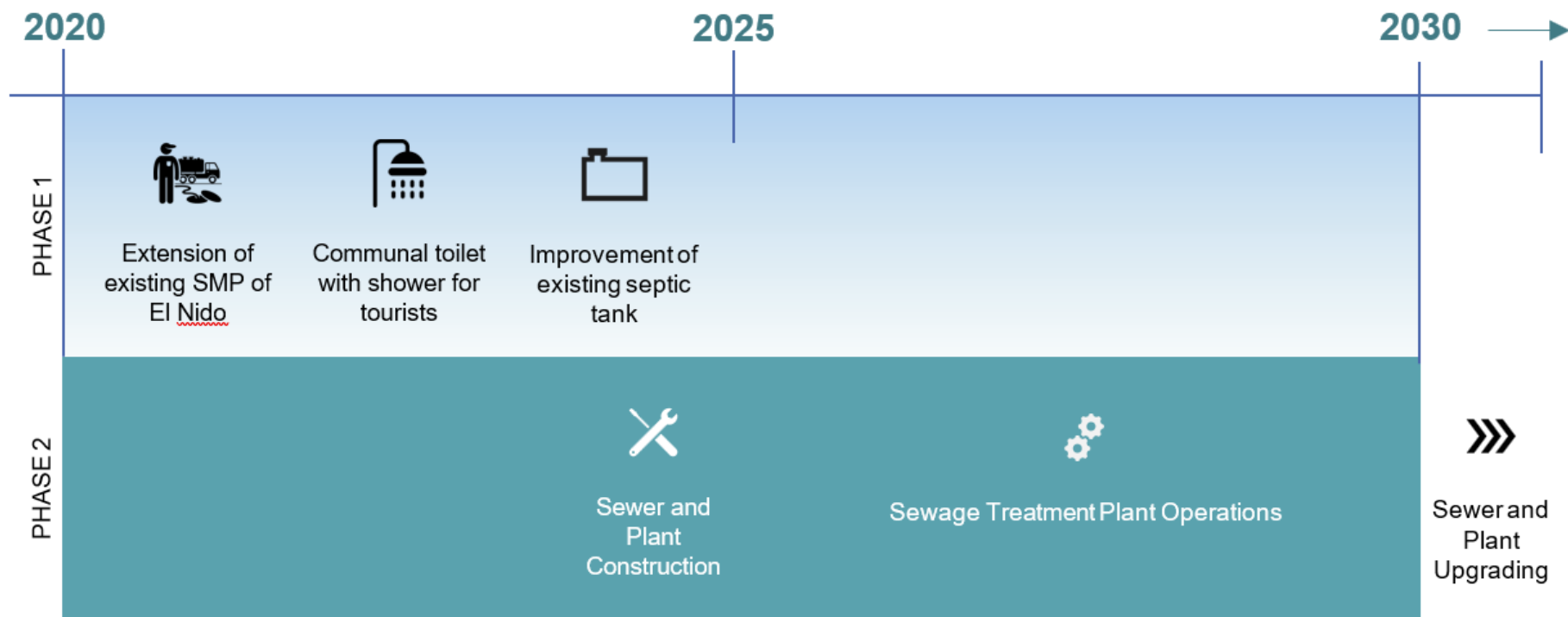
**Construction/Improvement of septic tanks** for existing households in Sitio Calitang

**Construction of communal toilet facility** with shower for tourists in Nacpan Beach

A **centralized sewage system** is recommended since the planned development is concentrated on Sitio Calitang

**Option 1 is recommended in the proposed site** in Sitio Calitang.

## Summary of Pre-FS: Recommendations





# CORON

# SITUATIONAL ANALYSIS

## SWOT ANALYSIS



## Situational Analysis: SWOT Analysis

**Strengths** - internal factors, characteristics, resources and capabilities of a TSA that can be used as a competitive advantage.

S

**Weaknesses** - internal factors and qualities that prevent the TSA from accomplishing its mission and achieving its full potential.

Weaknesses contribute to deterioration of success and growth

W

O

**Opportunities** - to favorable external factors that a TSA can pursue and exploit to gain benefit.

T

**Threats** - refer to external factors that have the potential to harm and reduce the TSA's performance



# STRENGTHS

## Situational Analysis: SWOT Analysis

### Tourism and Economic

- Presence of unique cultural assets from Indigenous tribes
- Presence of a strong enterprise association comprising all subsectors of tourism enterprises with strong leadership
- Willingness to adopt innovative approaches and commit funding towards collaborative partnerships with public sector in addressing enterprise skills and upgrading needs

### Environmental and Land Use

- Presence of multiple islands with high marine biodiversity, vibrant coral reefs, and beautiful white sand beaches.
- Presence of National and eco-parks
- Presence of underwater historic sites
- Rich in natural resources – timber, fisheries

### Infrastructure

- Easily accessible via plane, ferry, presence of cruise ships

### Institutional, Social and Gender

- Willingness to collaborate with public sector to resolve problems related to illegal constructions in forest lands and failure to observe ordinances

# WEAKNESSES

## Situational Analysis: SWOT Analysis

### Tourism and Economic

- Lack of social preparations for tourism and alternative livelihood in tourism supply chain
- Low enterprise production, quality and service skills and limited capacity for financing training and enterprise upgrading
- High dependence on marine-based products

### Environmental and Land Use

- Highly saturated urban core
- Pollution of the marine resources
- Highly sloping features making mobility in the island challenging

### Infrastructure

- Low resilience to natural disaster, poor road infrastructure, and Inadequate road network, transportation, and health facilities
- Unstable power and water supply and unreliable internet

### Institutional, Social and Gender

- Weak institutional and management capacities including urban services infrastructure management practices
- Presence of informal settlers and weak linkage between private, public, and Indigenous People
- Weak capacity of existing education and skill training institutions

# OPPORTUNITIES

## Situational Analysis: SWOT Analysis

### Tourism and Economic

- Ecotourism is getting more popular and people are more aware of impacts of climate change
- Inclusion of Palawan in List of Best Islands in Asia
- Developing an eco-label for Coron as an ecotourism destination including 'green' certification of tourism enterprises
- Developing an enterprise network-based skills training model supported by facility and equipment upgrading financing mechanism
- Adopting sustainable production and consumption practices by tourism enterprises

### Infrastructure

- Use of renewable energy is promoted globally
- Web-Services and cashless transaction systems are becoming easier to adopt and implement to enhance visitor experience

# THREATS

## Situational Analysis: SWOT Analysis

### Tourism and Economic

- Increasing tourist arrivals may exceed the carrying capacity of the island
- Similar tourism package exists in nearby municipalities

### Environmental and Land Use

- Uncontrolled/ uncoordinated development
- Poaching of endangered species and illegal trade of forest products
- Vulnerable to natural hazards and climate change



# **CORON**

# **TOURISM INFRASTRUCTURE DEVELOPMENT PLAN**

## **SECTORAL PLANS**



## Sectoral Plans

Sector	Objectives	Strategies
<b>Power and Energy</b>	1. To provide reliable and resilient power supply service, reduce dependence on diesel generation and, possibly, reduce the true cost of generation	1. Interconnect Coron/Busuanga to the Palawan mainland power grid
	2. To improve the accessibility, availability, and the quality of the power distribution system of the identified tourism development areas.	2. Conduct a Competitive Selection Process (CSP) for the power supply requirements of Coron/Busuanga
		1. Busuanga Island Electric Cooperative (BISELCO) to contract out to the various barangays some regular maintenance activities
		2. BISELCO to expand the distribution system to serve the unserved areas within their franchise area
		3. Capacity building of BISELCO technical personnel
	3. To improve travel safety and security without increasing commercial power demand so as to encourage tourists to travel even at night	1. Illuminate the main thoroughfares and roads leading to tourism sites
<b>Water Supply</b>	1. By 2030, achieve universal and equitable access to safe and affordable drinking water for all	1. Increase the number of households with access to water supply
		2. Ensure future supply for the existing water system in the urban barangays
		3. Maintain water quality within the limits of the PNSDW
		4. Maintain adequate supply and pressure in the urban area



## Sectoral Plans

Sector	Objectives	Strategies
<b>Flood Management System</b>	1. To attain a flood-free and climate change resiliency within Coron	1. Create a comprehensive flood management feasibility study that will identify the network of drainage throughout the whole municipality
		2. Preparation of DRRM mitigation plans for the island
	2. To create flood resilient communities through alternative mitigation measures	1. Development of non-structural mitigation measures that can also help boost agriculture and the environment
		2. Development of alternative waterways for flood mitigation and irrigation
<b>Solid Waste Management</b>	1. To comply with RA 9003 re: disposal system	1. Closure of open dumpsite
		2. Prepare the FS and Detailed Engineering Design of SLF.
	2. To improve the collection service	1. Inventory of existing garbage collection system. Collection service for each LGU is covered by Section 10 of RA 9003.
		2. Prepare the list of equipment required and specification.
	3. To increase awareness of RA 9003 re: waste segregation, recycling, best practices on waste disposal.	1. Identify /determine the IEC materials and methodology to be used i.e distribution of materials, pulong–pulong, etc.
		2. Coordinate with the Barangay officials.

## Sectoral Plans

Sector	Objectives	Strategies
<b>Sanitation</b>	1. All population using safely managed sanitation services, with handwashing facility and water by 2030 (SDG 6.2).	1. Increase access to improved sanitation facilities.
		2. Septage management program available for ALL households in Coron.
		3. Sewerage system and wastewater treatment facilities operational in priority areas.
<b>Connectivity and Transport</b>	1. To provide congestion free, traffic safety and tourist friendly environment	1. Managed Growth at the Urban Core
	2. To improve accessibility, mobility, and connectivity to the identified tourism development areas.	1. Infrastructure upgrade
		2. Development of Coastal and Marine Sites
		3. Development of Terrestrial Sites
		4. Agriculture and Fishery Development
		5. Satellite Settlements (Decalachao)
		6. Development in Borac



# **CORON**

# TOURISM INFRASTRUCTURE DEVELOPMENT PLAN

**LIST OF PROGRAMS,  
ACTIVITIES, PROJECTS (PAPs)**



## List of PAPs – Transport and Connectivity

No.	Sector	Programs / Activities / Projects	General Description	Proposed by
1.	Transportation	Road Construction from Lualhati Park to Port Area	Widening of national highway in Barangay Tagumpay to facilitate connectivity to the port.	Coron LGU
2.	Transportation	Passenger Terminal Building at Lualhati Park	Design and construction of passenger terminal building for outrigger boats.	Coron LGU
3.	Transportation	Modernization of Tourist Bangka	Design and upgrade motorized wooden-hulled Bangka for tourist including construction and improvement of its facilities.	Study Team
4.	Transportation	Borac Port Development	Link the island of Busuanga to the country's RORO Nautical Highway.	Provincial LGU
5.	Transportation	Redevelopment of Busuanga Airport	Re-orientation of the runway and increase in runway length to 2,500 meters.	Coron LGU
6.	Transportation	Tourism Road Infrastructure Project (TRIP) Convergence Projects (Continuation)	Construction of 81 km-103 km tourist road infrastructure in Coron.	DOT/DP WH/ Coron LGU
7.	Transportation	Controller Ribbon Development	Establishment of easements and enforcement of setbacks from national highway.	Coron LGU
8.	Transportation	Construction of Coastal Road	Design and construction of coastal road.	Coron LGU
9.	Transportation	Solar Street lights	Construction of solar streetlights in Town Proper.	Coron LGU
10.	Transportation	Integrated Land Transport Terminal	A multimodal transport terminal that will serve as a transport hub for passengers, tourists, and cargoes.	Coron LGU

## List of PAPs – Tourism Services

No.	Sector	Programs / Activities / Projects	General Description	Proposed by
11.	Tourism	Rehabilitation of Coastal and Marine Sites	Development of carrying capacity limits on tourism assets and implementation of sustainable resource management plans.	Coron LGU
12.	Tourism	Pedestrian Zone Development	Improvement of paving and closing of Real St., San Agustin and Burgos St.	Coron LGU
13.	Tourism	Green Space Development	Development of green space and construction of promenade at waterfront.	Coron LGU
14.	Tourism	Improvement of Facilities in Tourism Destinations	Upgrading and improvement of the existing facilities in tourism destinations in CYC and Mount Tapyas.	Coron LGU
15.	Economic	Agri-Business Center	To raise productivity of leading & potential commodities that will promote processing of selected major commodities, effectively manage supply & demand of food products and develop new, quality, high value products.	Study Team
16.	Social	Convention Center	A multi-purpose convention and events center that could hold large and small events and could be utilized for any other purposes as needed by the residents and visitors.	Coron LGU

## List of PAPs – Support Services

No.	Sector	Programs/ Activities/ Projects	General Description	Proposed by
17.	Energy	Solar Street Lights	Solar Street Lights at tourist destinations and major roads.	Coron LGU
18.	Energy	Solar Rooftop or Land-Based Photovoltaic (PV) Power Supply Plant	To reduce consumption of fuel-based electricity generation.	Study Team
19.	Energy	Wind Power Plants		Study Team
20.	Water Supply	Provincial Water Supply Development Plan	Development of bulk water sources at Rural Barangays Improvement.	Provincial LGU
21.	Water Supply	Water Sources Development	Development of water sources from Kway River and groundwater development in Barangays Tagumpay and Guadalupe.	Provincial LGU
22.	Water Supply	Water Facilities Upgrade	Upgrade existing treatment facilities for the urban barangays and installation of treatment facilities at existing Level II and Level III Systems without treatment	Study Team
23.	Solid Waste Management	Construction of Sanitary Landfill facility	To establish a centralized and updated waste collection facility in accordance with the guidelines set under RA 9003.	Coron LGU - SWMO, DENR



## List of PAPs – Support Services

No.	Sector	Programs/ Activities/ Projects	General Description	Proposed by
24.	Sanitation	Sewerage System	Establishment of new sewerage system for urbanized areas.	Provincial LGU
25.	Sanitation	Septage Treatment Plant	Construction of septage treatment facility in current dumpsite in Guadalupe.	Coron LGU
26.	Sanitation	Communal Toilet Facilities	Construction of communal toilet facilities with water and handwashing facilities in public areas including parks, public beach areas, public transportation terminals, public markets and schools and improved toilet facilities in key tourist island destinations	Study Team
27.	Social	Upgrading Coron District Hospital	Health care development covering major tourist destinations through Health Facilities Enhancement Program.	DOH



# PRE-FEASIBILITY STUDIES

## CORON



## Ranking of the Short-Listed PAPs

Shortlisted PAPs	Score	Rank
Provincial Water Supply Development Plan (Development of bulk water sources at Rural Barangays Improvement)	93.75	1
Coron District Hospital (Equipment and Facilities)	93.75	2
Construction of Sanitary Landfill facility*	93.30	3
Integrated Land Transport Terminal (RAC Site)*	89.73	4
Convention Center	89.29	5
Improvement of Facilities in CYC and Mount Tapyas	87.95	6
Road Construction from Lualhati Park to Port Area	87.95	7
Solar Street Lights at tourist destinations and major roads	86.61	8
Tourism Road Infrastructure Project (TRIP) Convergence Projects (Continuation)	86.16	9
Agri-Business Center (RAC Site) Cashew nut production	84.82	10
Construction of Solar Street lights in Town Proper	83.04	11
Passenger Terminal Building at Lualhati Park	82.59	12
Pedestrian Zone Development and Green space development	81.70	13

\* Highlighted PAPs – PAPs with Pre-Feasibility Study



# **CORON**

# **PRE-FEASIBILITY STUDY**

## **SOLID WASTE MANAGEMENT**





## Summary of Pre-FS: Recommendations

### Development Options

The **SLF Design** will receive 9,164 kg/day residual waste in 2021 to 13,021 kg/day 2030

The SLF will be done in **four phases** – 10,000 m<sup>2</sup> per phase or one landfill bed.

A total of **70.15% of waste is diverted from the SLF** – 36.82% biodegradable waste and 33.33% recyclable waste

Candidate site is located at **Brgy. San Nicolas**, 5km from BDA, with an area of 5 ha. – this includes route plan for solid waste collection and transport

### Recommendations

**80% is allocated to horizontal structures** including the landfill bed, embankment, drainage, leachate collection pond and separate cell for hazardous waste/special waste, and **20% is dedicated to the vertical structures**

By the end of CY 2027, the LGU should prepare **Phase 2 of the development plan**

The LGU can come up with a **filling stage plan** as an option to extend the service life (7 years) of the SLF



### SKETCH MAP

0 0.1 0.2 0.4  
Kms.

1 centimeter = 91 meters  
1 : 9100

Source: Garcia Montero - CLUP  
Geographic Coordinate System: GCS\_WGS\_1984  
Datum: D\_WGS\_1984



Project Title : Proposed Sanitary Landfill  
and Road Opening

Location : Bgy. San Nicolas, Coron, Palawan

Owner : Municipal Government of Coron

Landfill Area : 5 Hectares

Road Length: approx. 904 meters

### Legend

- Points
- Contour
- Provincial Road
- Barangay Road
- Proposed Road Opening
- Proposed Sanitary Landfill

POINTS	LATITUDE	LONGITUDE
Point 1	12° 4' 13.437" N	120° 36' 43.469" E
Point 2	12° 4' 18.544" N	120° 36' 40.267" E
Point 3	12° 4' 20.542" N	120° 36' 45.167" E
Point 4	12° 4' 21.347" N	120° 36' 45.464" E
Point 5	12° 4' 21.347" N	120° 36' 45.464" E
Point 6	12° 4' 20.267" N	120° 36' 45.464" E
Point 7	12° 4' 41.245" N	120° 36' 46.435" E


LINE	BEARING	DISTANCE
1-2	N 28° 53' 25" W	286.35
2-3	S 65° 57' 28" W	190.54
3-4	N 36° 22' 41" E	61.29
4-5	S 22° 22' 4" E	625.95
5-6	S 22° 22' 4" W	33.12
6-7	S 76° 29' 39" E	328
7-8	S 76° 58' 27" E	28.74
8-9	S 7° 4' 41" E	107.61



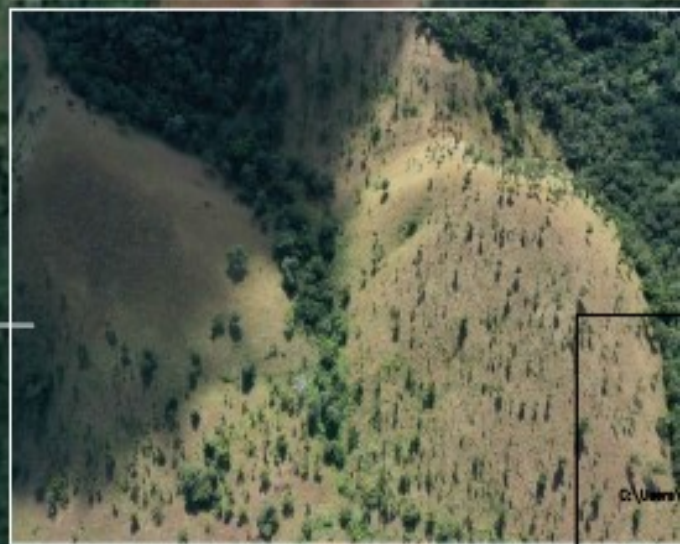
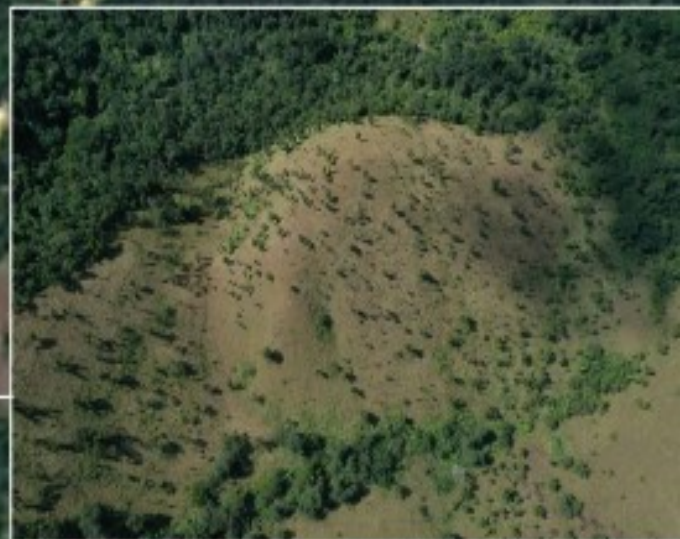


## SKETCH MAP

### LEGEND:

 PROPOSED SANITARY LANDFILL ( 5 has. )

 PROPOSED ROAD OPENING ( 904 m )



Dr. Umay

### Technical Description

### COORDINATES

LINE	BEARINGS	DISTANCE
1	N 24-53-36 W	246.31
2	N 67-24-17.27 W	182.94
3	N 29-12-41 E	21.29
4	S 22-23-0.38 E	325.96
5	S 32-44-6.82 W	33.32
6	S 76-29-39.33 W	135
7	S 78-65-2.75 W	29.96
TP	S 12° 4' 11.41" N	S 12° 10' 43.69" E

POINTS	LATITUDE	LONGITUDE
Point 1	12° 4' 11.470" N	120° 10' 43.690" E
Point 2	12° 4' 18.536" N	120° 10' 40.297" E
Point 3	12° 4' 20.511" N	120° 10' 45.150" E
Point 4	12° 4' 21.115" N	120° 10' 45.454" E
Point 5	12° 4' 11.995" N	120° 10' 49.464" E
Point 6	12° 4' 10.709" N	120° 10' 48.881" E
Point 7	12° 4' 11.706" N	120° 10' 44.636" E

PREPARED BY:

**IAN DENVER S. BERNAL**  
MPDO CORON STAFF

PREPARED BY:

**ENGR. JESS JOHN AREVALO**  
SOLID WASTE MANAGEMENT OFFICER

TITLE:

**PROPOSED SANITARY LANDFILL and ROAD OPENING**

LOCATION:

**BARANGAY SAN NICOLAS, CORON, PALAWAN**



# **CORON**

# **PRE-FEASIBILITY STUDY**

## **INTEGRATED TRANSPORT**

## **TERMINAL**





## Summary of Pre-FS: Recommendations

### Objectives of the Project

Develop a **multimodal transport terminal** that will cater to all transport services in Coron and transport services coming from neighboring barangays and other municipalities

Establish a **transport and tourist information center** for commuters and tourists.

Provide **commercial and tourism attractions** that will generate revenue for the local government.

### Development Options

Proposed 5,726 m<sup>2</sup> site is along the **Busuanga-Coron Road in Barangay Poblacion 6** - main facility for public transport in Coron (PUB, PUJs, and PUVs, and tricycles)

**A 3-storey building –**

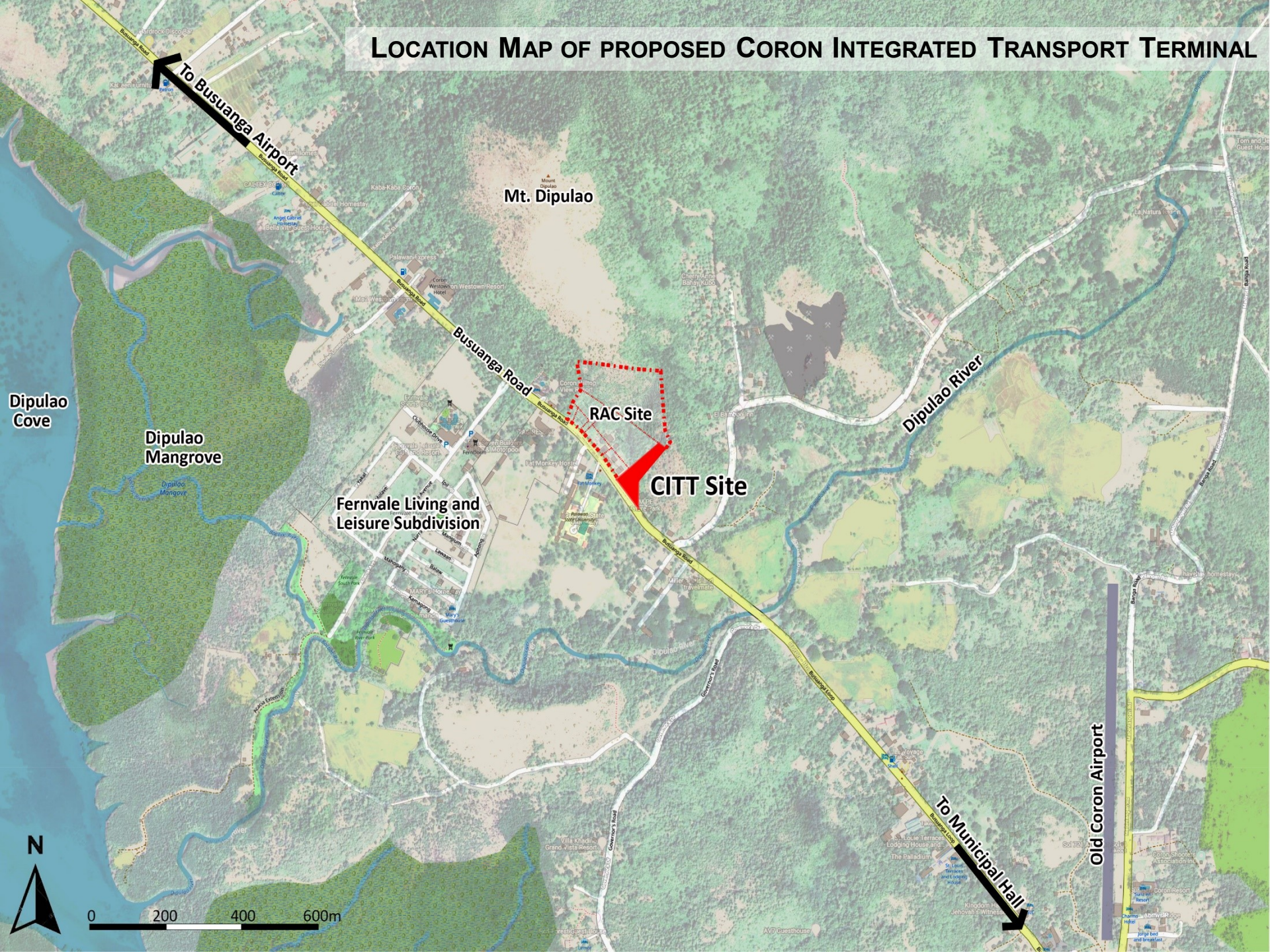
Ground floor - devoted to embarking and disembarking passengers;

Second Floor - has the ticketing offices and waiting area; and

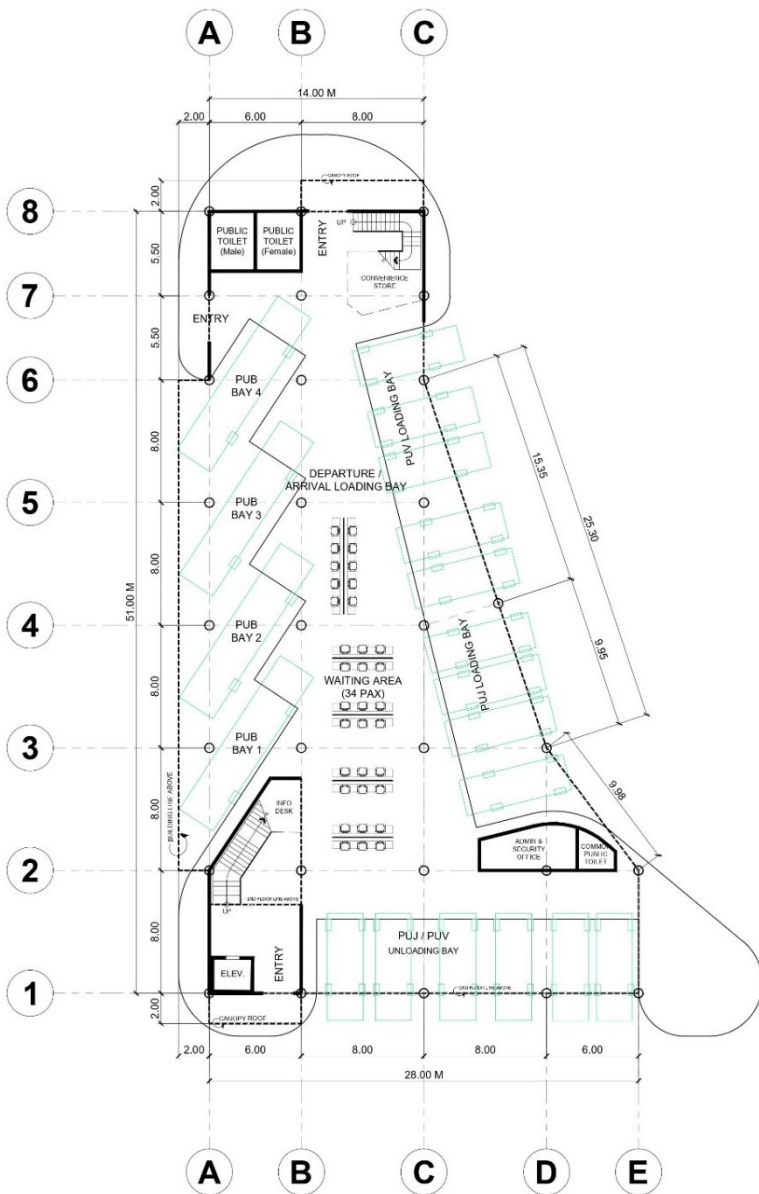
Third Level – is the viewing deck and al fresco dining area.



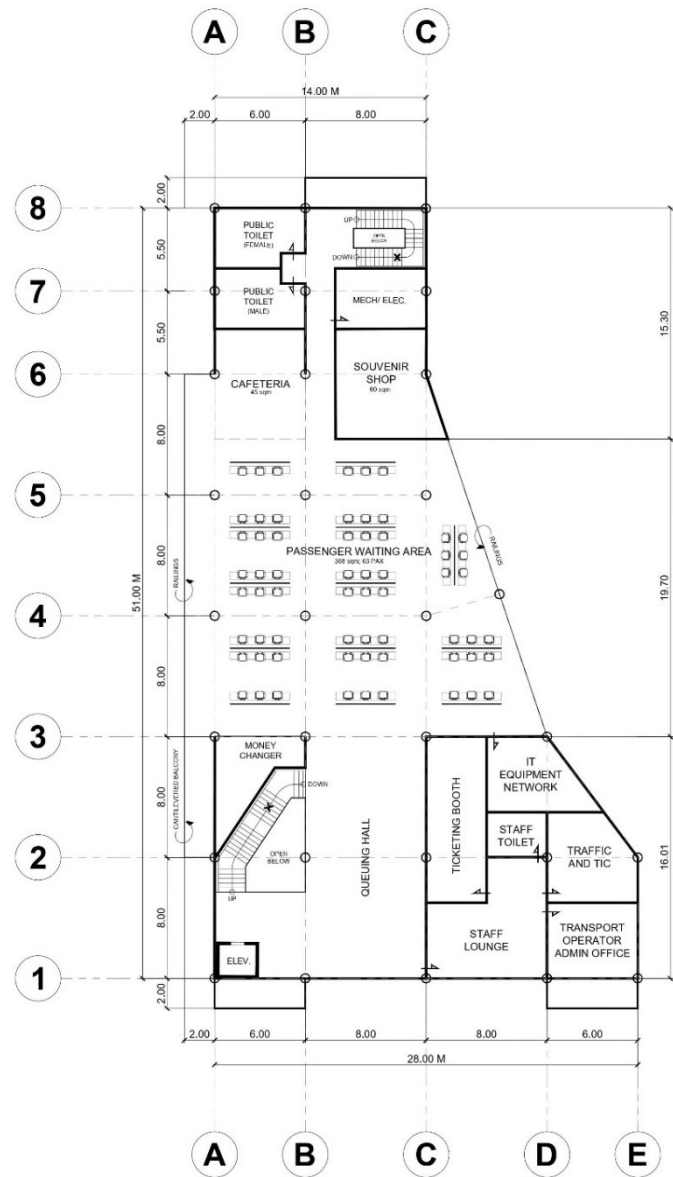
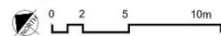
## LOCATION MAP OF PROPOSED CORON INTEGRATED TRANSPORT TERMINAL



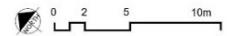


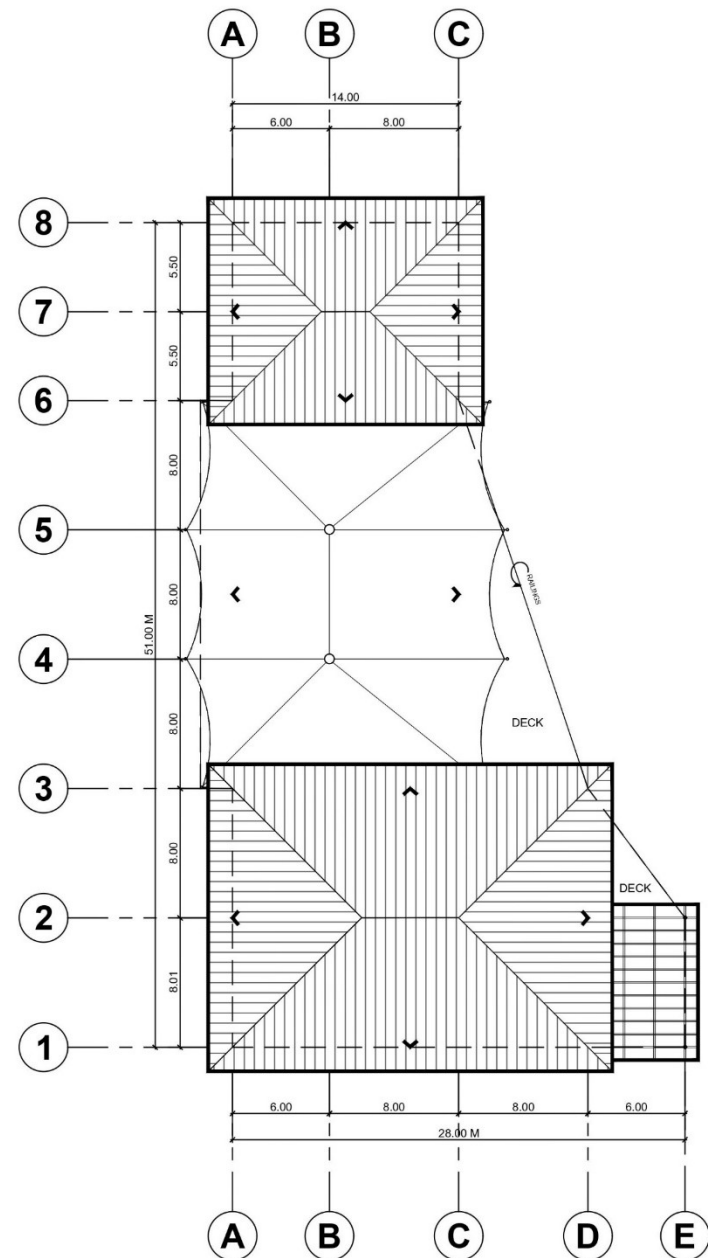
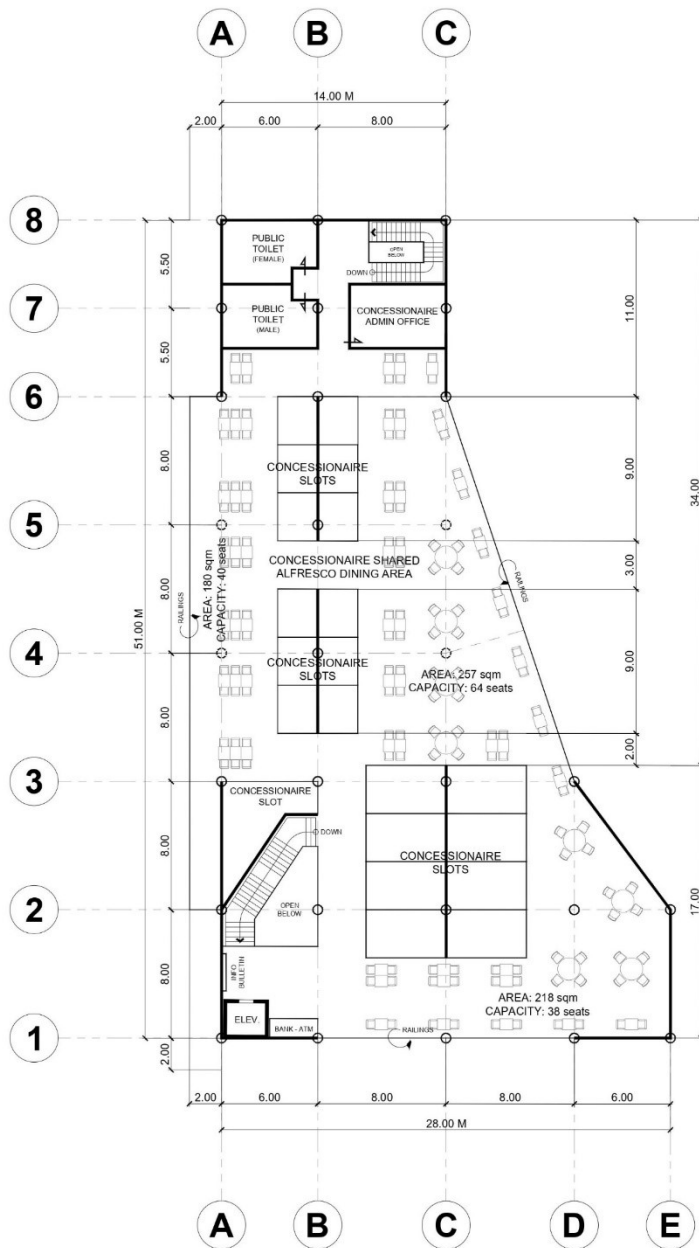


Conceptual Ground Floor Plan



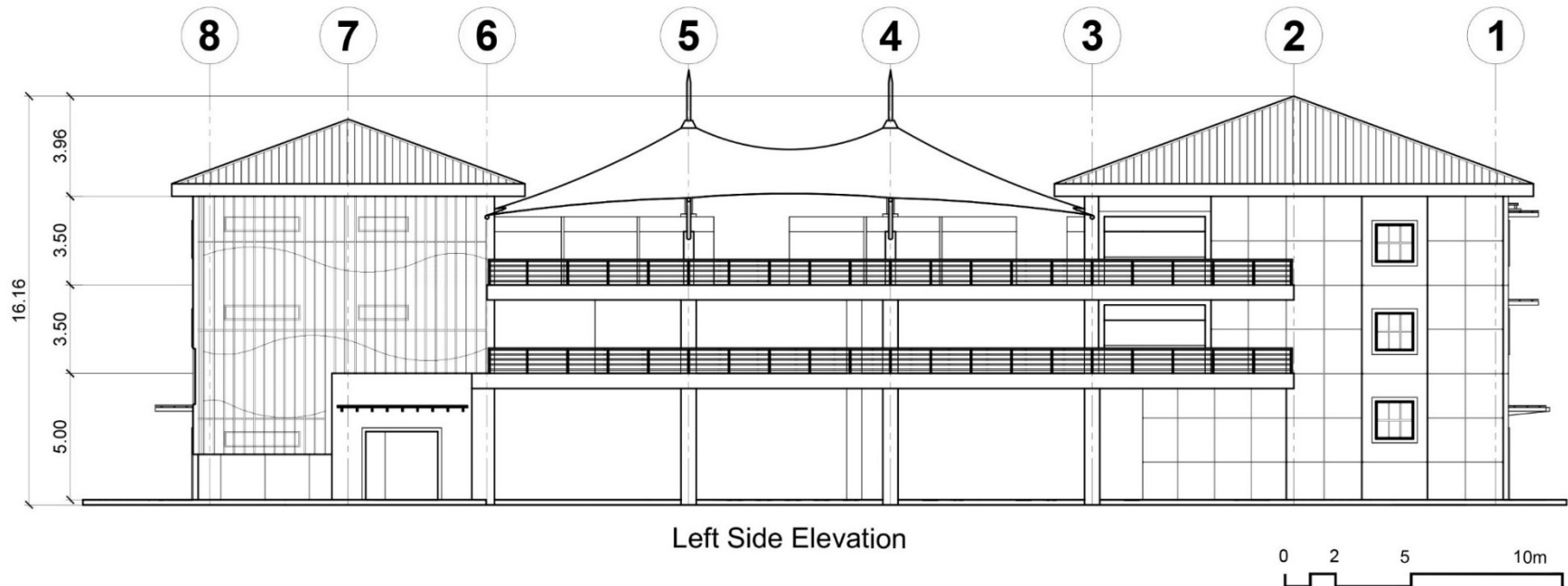
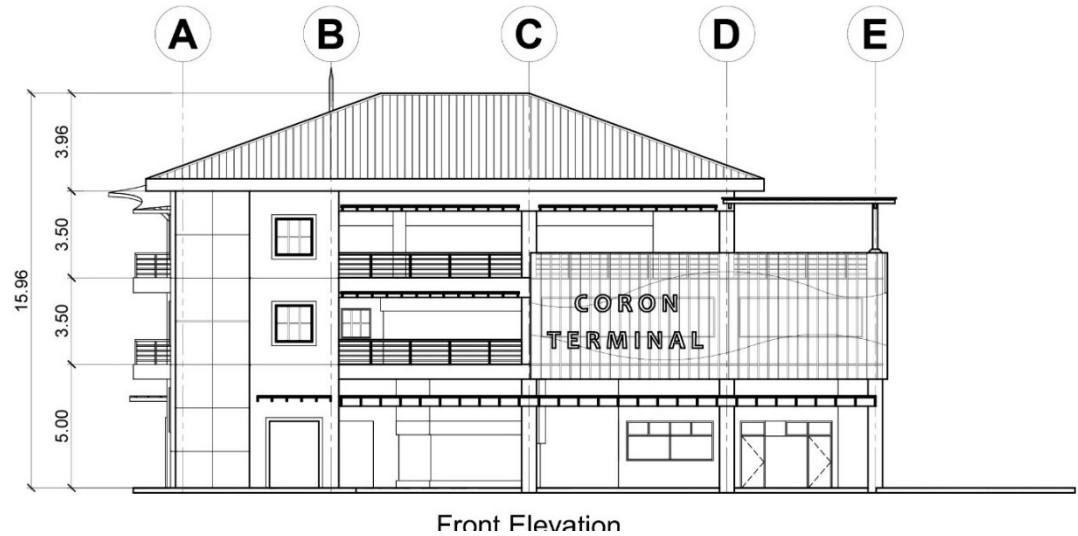
Conceptual Second Floor Plan







# CORON INTEGRATED TRANSPORT TERMINAL



# CORON INTEGRATED TRANSPORT TERMINAL





# OPEN FORUM





# THANK YOU!

