

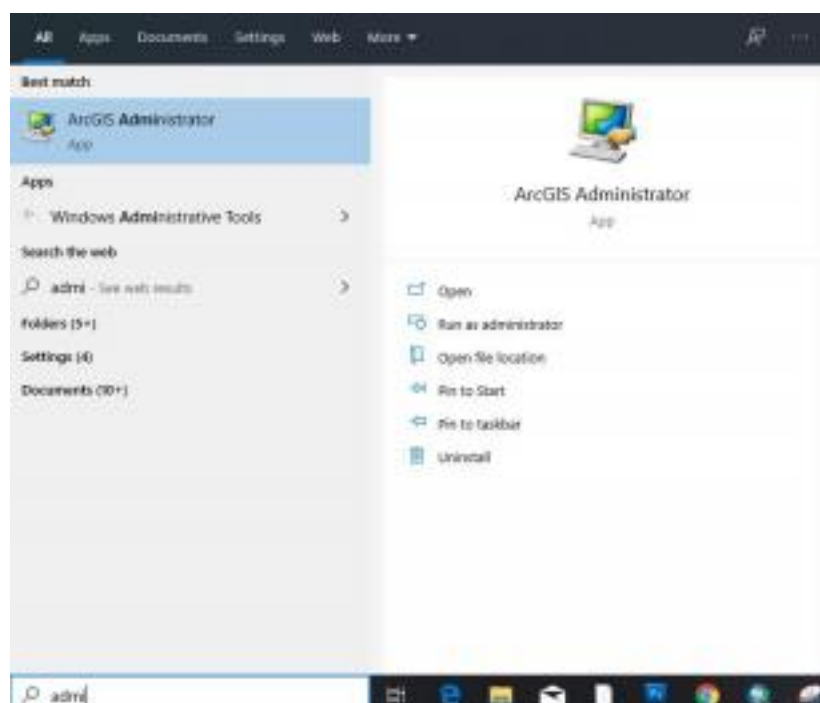
Instruction 2: Install ArcGIS Desktop

REMINDERS BEFORE INSTALLATION

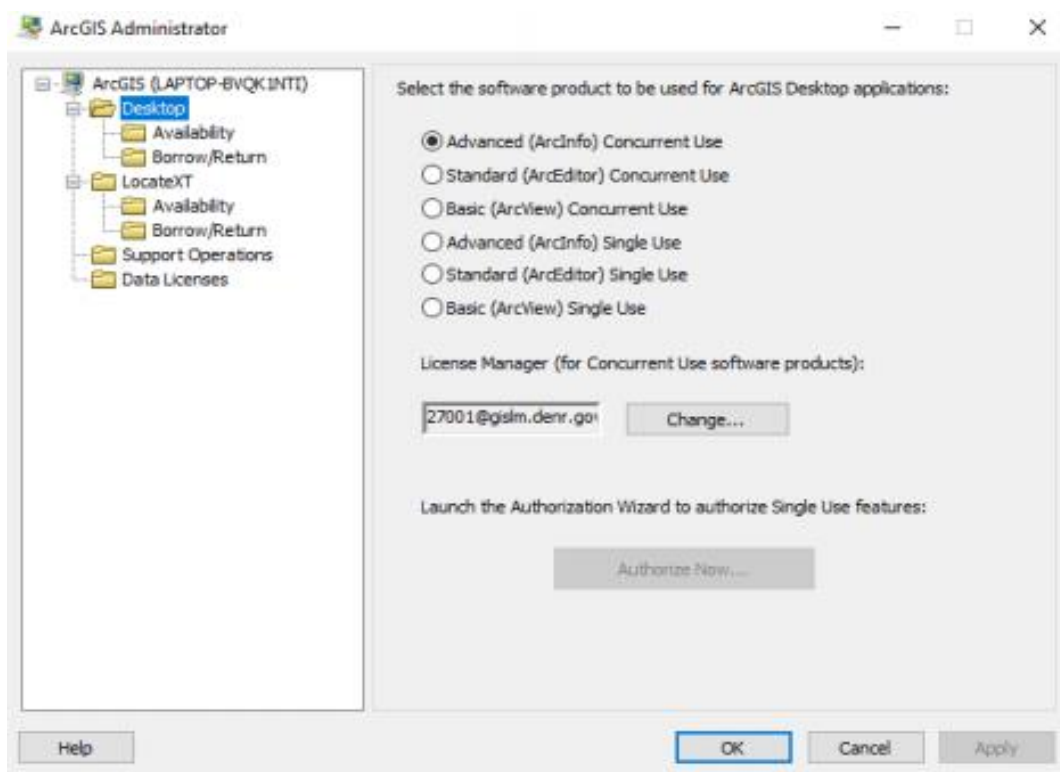
- Review the ArcGIS Desktop system requirements to verify operating system and other environmental prerequisites. Visit <https://desktop.arcgis.com/en/arcmap/latest/get-started/setup/arcgis-desktop-system-requirements.htm> to check the system requirements for ArcGIS Desktop.
- Ensure that the computer is connected to OpenVPN (refer to Instruction 1).
- For each installation of ArcGIS Desktop, please fill out the request form accessible through <http://bit.ly/39GKiSK>.
- If you don't have the installer, please email denrcontrolmap@denr.gov.ph for assistance.

STEPS IN INSTALLING ARCGIS DESKTOP

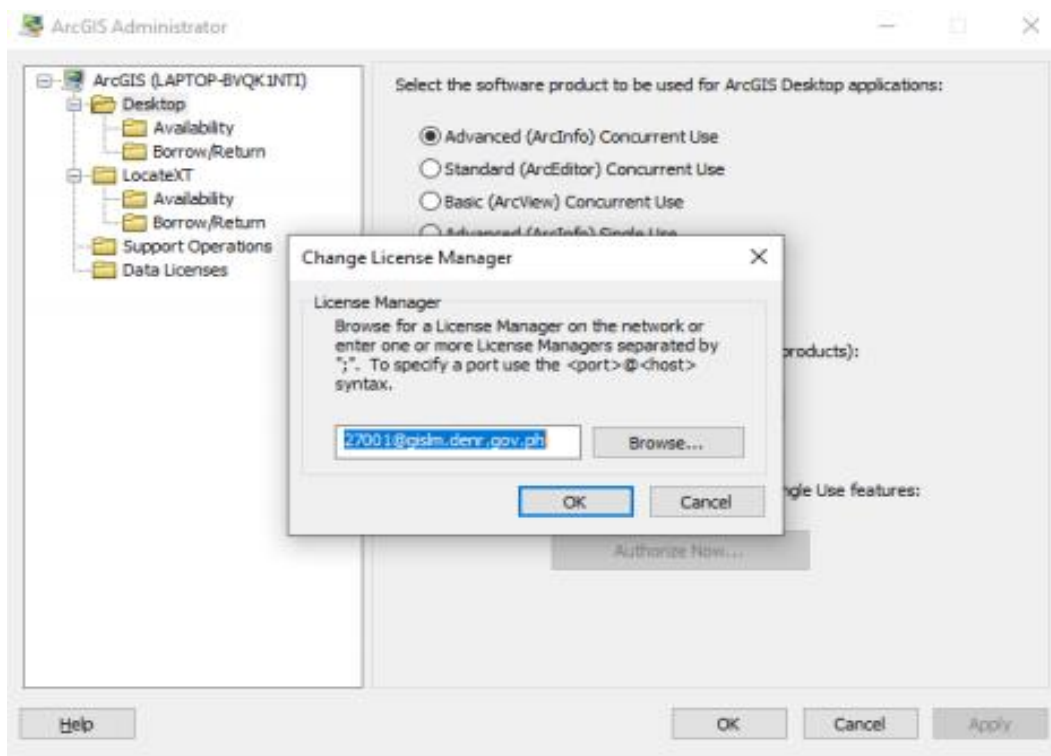
1. Access the **ArcGIS Desktop Installer** provided by the DENR Control Map Secretariat using the following file path: `ArcGISDesktop10.7.1/GISPro2.4 (E:) > ArcGIS Desktop 10.7.1 > Desktop`
2. Launch the Setup file to initiate the installation of the ArcGIS Desktop 10.7.1. A setup window will pop-up, click Next.
3. During the installation, read the license agreement and accept it, or exit if you do not agree with the terms. Continue with the installation until it is completed.
4. Launch the ArcGIS Administrator application to proceed with authorization.



5. On the left-hand panel, choose Desktop. Choose **Standard (ArcEditor) Concurrent Use**.



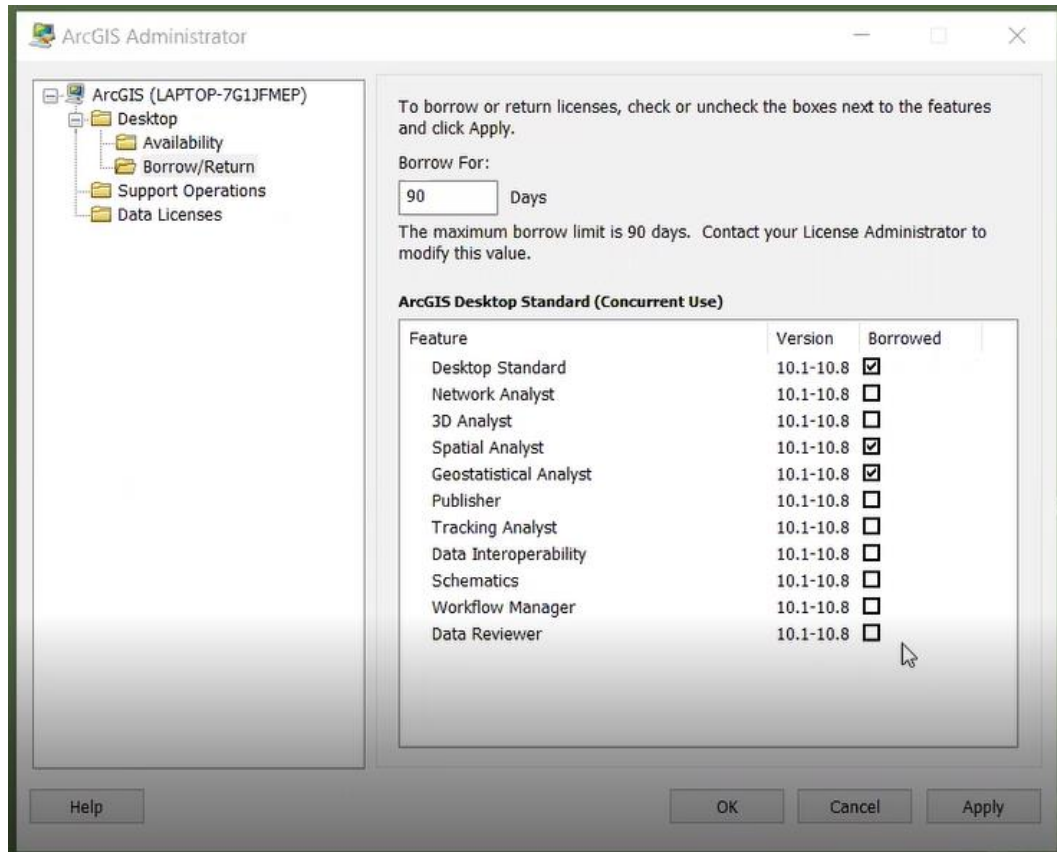
6. Click Change to define the path for the DENR Enterprise License Manager. Type in 27001@gism.denr.gov.ph, then click Ok.



7. Click Apply, then Ok to complete the authorization. You can now use ArcMap in your computer by looking for the application in the Start Menu or

clicking the icon  on your desktop.

8. To use ArcMap offline, click Borrow/Return (found under Desktop) on the ArcGIS Administrator window. You will need to indicate the **number of days** you wish to borrow the license and the **type of license** you want to borrow. Click Apply then Ok.



Please note:

- The maximum number of days set for borrowing is 90 days. Even if you are installing ArcGIS Desktop in an assigned workstation, you will still need to reauthorize it after the maximum number of days.
- The license allotted for each office is **Desktop Standard** with the following distribution:
 - Regional Office – 5
 - Supervising PENRO – 2
 - Implementing PENRO – 3
 - CENRO – 3
 - Bureau – 3

- If you need to use **Desktop Advanced**, please fill out the request form accessible through <http://bit.ly/39GKiSK>.

Reference:

ESRI. (n.d.). ArcMap. <https://desktop.arcgis.com/en/arcmap>