

Instruction 3: Install ArcGIS Pro

ArcGIS Pro is Esri's single desktop GIS application, which supports data visualization, advanced analysis and authoritative data maintenance in both 2D and 3D. ArcGIS Pro is tightly coupled with the ArcGIS platform supporting data sharing across ArcGIS Online and ArcGIS Enterprise through Web GIS (ESRI, n.d.).

ArcGIS Pro can be installed as a per-machine installation or as a per-user installation. A per machine installation allows all users on the machine to use ArcGIS Pro. A per-user installation allows only the installer to use ArcGIS Pro. The default installation locations for each option can be found in Install ArcGIS Pro silently using command line parameters under INSTALLDIR. The steps below reflect a per-machine installation.

FUNCTIONALITY

The ArcGIS Pro Standard functions include:

Map Creation, Interactive Visualization, and Spatial Analysis

- a. Create interactive maps and scenes from file, database, and online sources.
- b. Visually model and spatially analyze a process or workflow.
- c. Access basic spatial analysis tools for overlay, proximity, and summary.
- d. Access statistical tools for analyzing spatial patterns, clusters, and relationships.
- e. Access extensive automated data management tools.
- f. Run scripting, geoprocessing, and other operations using Python.
- g. Create street-level maps that incorporate GPS locations.
- h. View CAD data or satellite/aerial imagery.
- i. Use charts to visualize categories, relationships, distributions, and change in your data.
- j. Publish and share maps and projects as packages and services on the web, mobile apps, and social media.
- k. Create, configure, and print page layouts.

Multuser Editing and Advanced Data Management

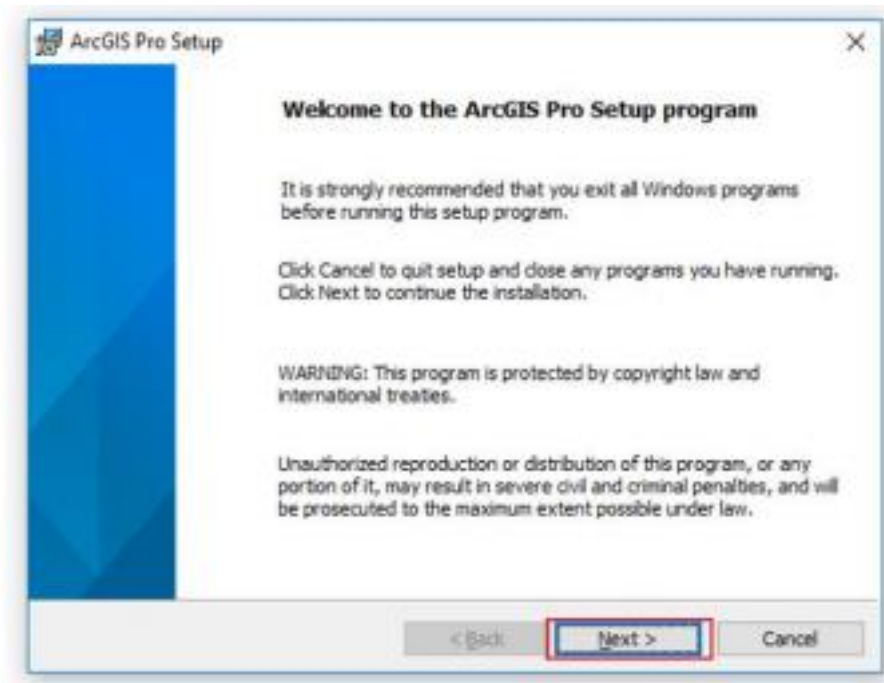
- a. Access complete GIS data editing capabilities.
- b. Edit a multuser enterprise geodatabase.
- c. Use disconnected editing in the field.
- d. Store historical snapshots of your data.
- e. Automate quality control.
- f. Create spatial data from scanned maps.
- g. Manage workflows and job assignments.

REMINDER BEFOR INSTALLATION

- Review the ArcGIS Pro system requirements to verify operating system and other environmental prerequisites. Visit https://pro.arcgis.com/en/pro-app/get_started/arcgis-pro-system-requirements.htm to check the system requirements for ArcGIS Pro.
- For each installation of ArcGIS Pro, please fill out the request form accessible through <http://bit.ly/39GKiSK>.
- If you don't have the installer or the login credentials for ArcGIS Online, please email denrcontrolmap@denr.gov.ph for assistance.

STEPS IN INSTALLING ARCGIS PRO

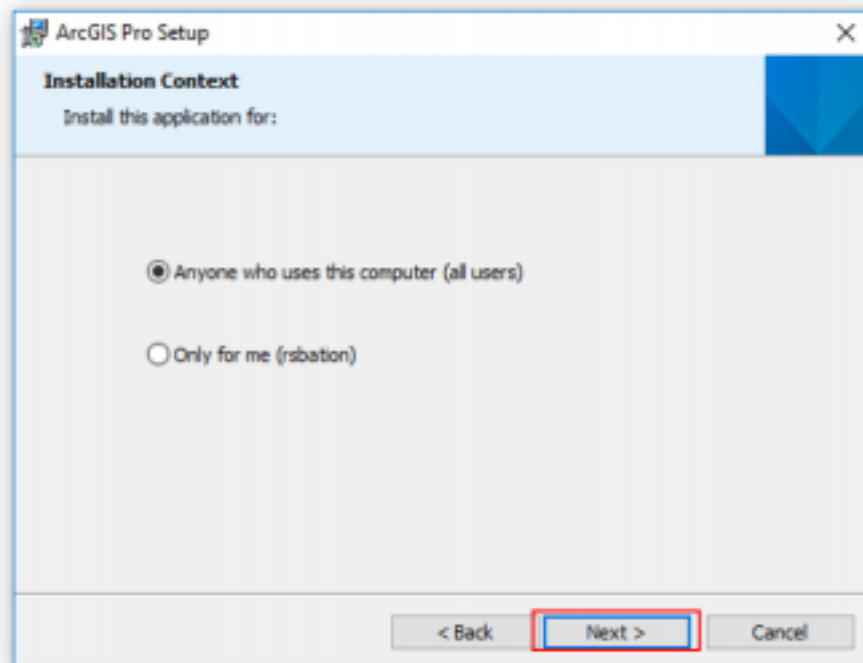
1. Access the **ArcGIS Pro installer** provided by the DENR Control Map Secretariat using the following file path: > ArcGIS_Pro_2.3 > ArcGISPro_23_167023 > ArcGISPro
2. Launch the ArcGIS Pro installer to open the ArcGIS Pro Setup window. Click Next.



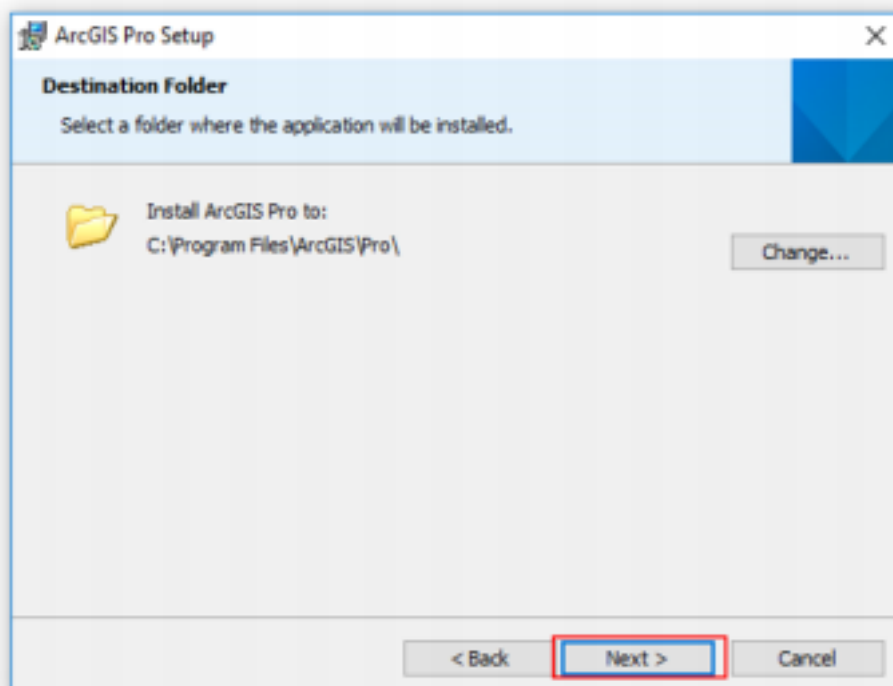
3. During the installation, read the license agreement and accept it, or exit if you do not agree with the terms.



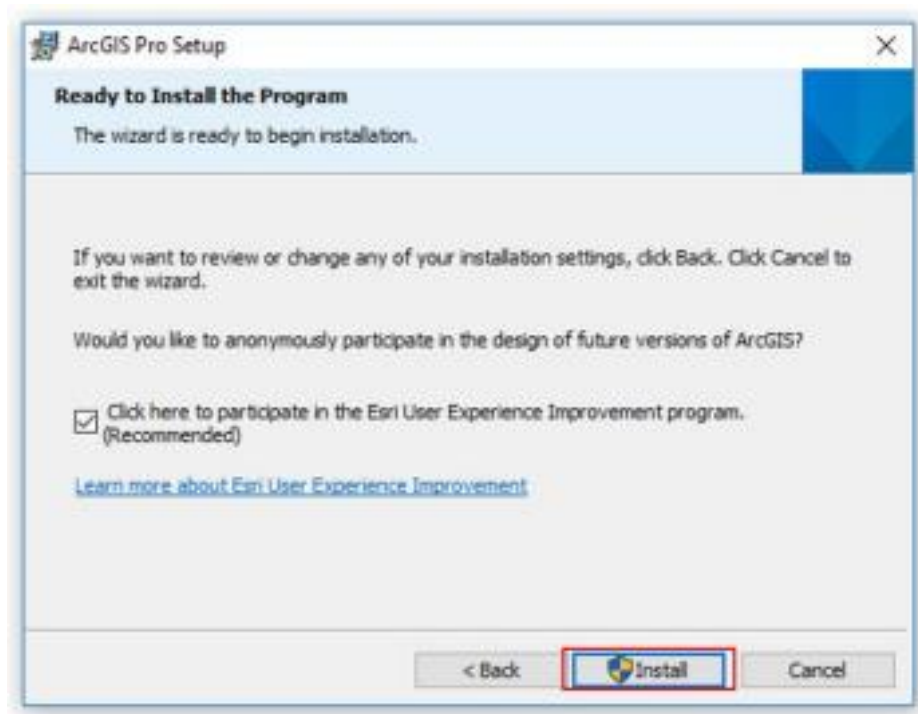
4. Choose whether the ArcGIS Pro will be accessible only to a single user of the computer or all users, then click Next.




5. Choose the destination folder for the installation (default: C:\Program Files), then click Next.



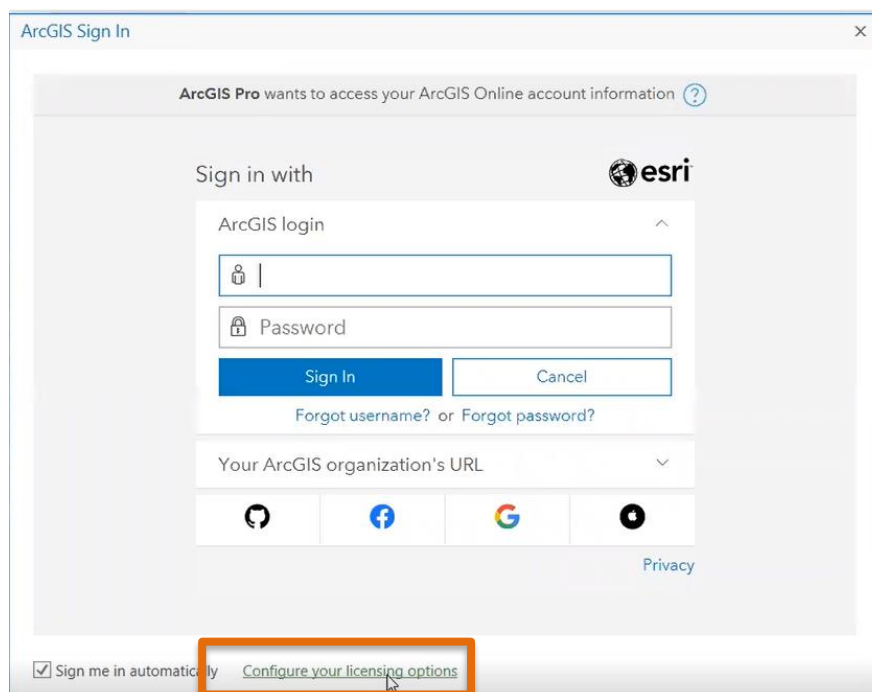
6. Click Install, to initiate installation.



7. Wait for the installation to complete. Then click Finish.

8. You can launch the ArcGIS Pro  application or through the Windows Start Menu.

9. After you open ArcGIS Pro, a login window will appear. For the first launch, locate the "Configure your licensing options" below the pop-up window instead of the ArcGIS Login.



10. In the configure authorization window, choose “Concurrent Use License” as License Type, choose “Standard” for License Level and key in 27001@gislm.denr.gov.ph for License Manager. You may tick the boxes of the licenses you want to borrow and then click okay and you a pop-up window will prompt you to re-launch ArcGIS Pro.

Licensing

Configure Authorization

Select your authorization type from the drop-down list below:

License Type Concurrent Use License [Learn More](#)

License Level

Select the Pro core product license level below:

Advanced Standard Basic

License Manager 27001@gislm.denr.gov.ph Add Backup

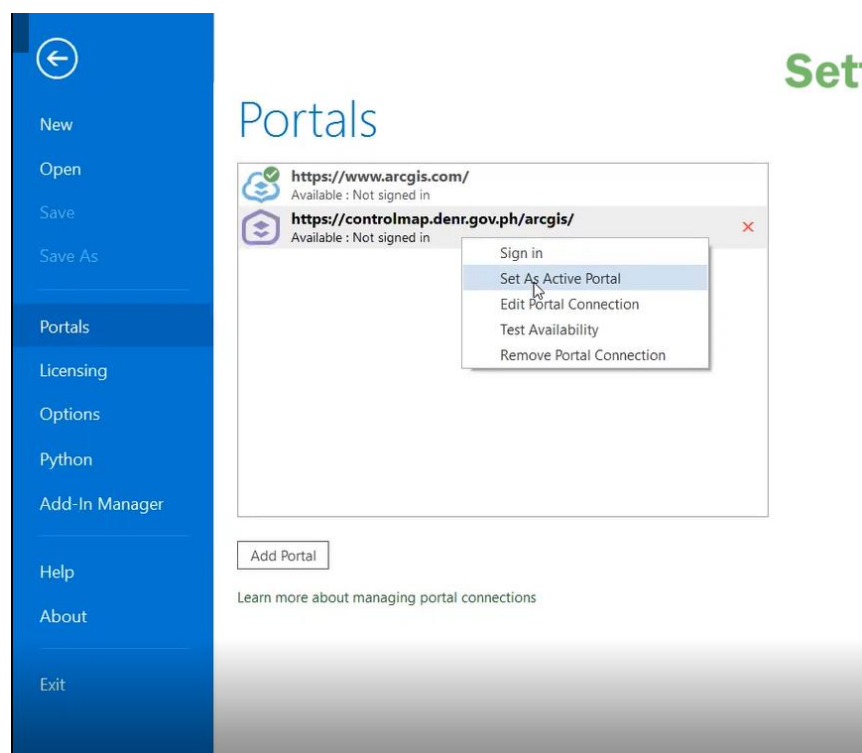
Name	Licensed	Available Seats	Expires
ArcGIS Pro Standard	<input checked="" type="checkbox"/>	664	Never
3D Analyst	<input type="checkbox"/>	19	Never
Aviation Airports	<input type="checkbox"/>	0	N/A
Business Analyst	<input type="checkbox"/>	0	N/A
Data Interoperability	<input type="checkbox"/>	19	Never
Data Reviewer	<input checked="" type="checkbox"/>	8	Never
Defense Mapping	<input type="checkbox"/>	0	N/A
Geostatistical Analyst	<input checked="" type="checkbox"/>	53	Never
Image Analyst	<input type="checkbox"/>	0	N/A
LocateXT	<input type="checkbox"/>	0	N/A
Location Referencing	<input type="checkbox"/>	0	N/A
Map Series Designer	<input type="checkbox"/>	0	N/A

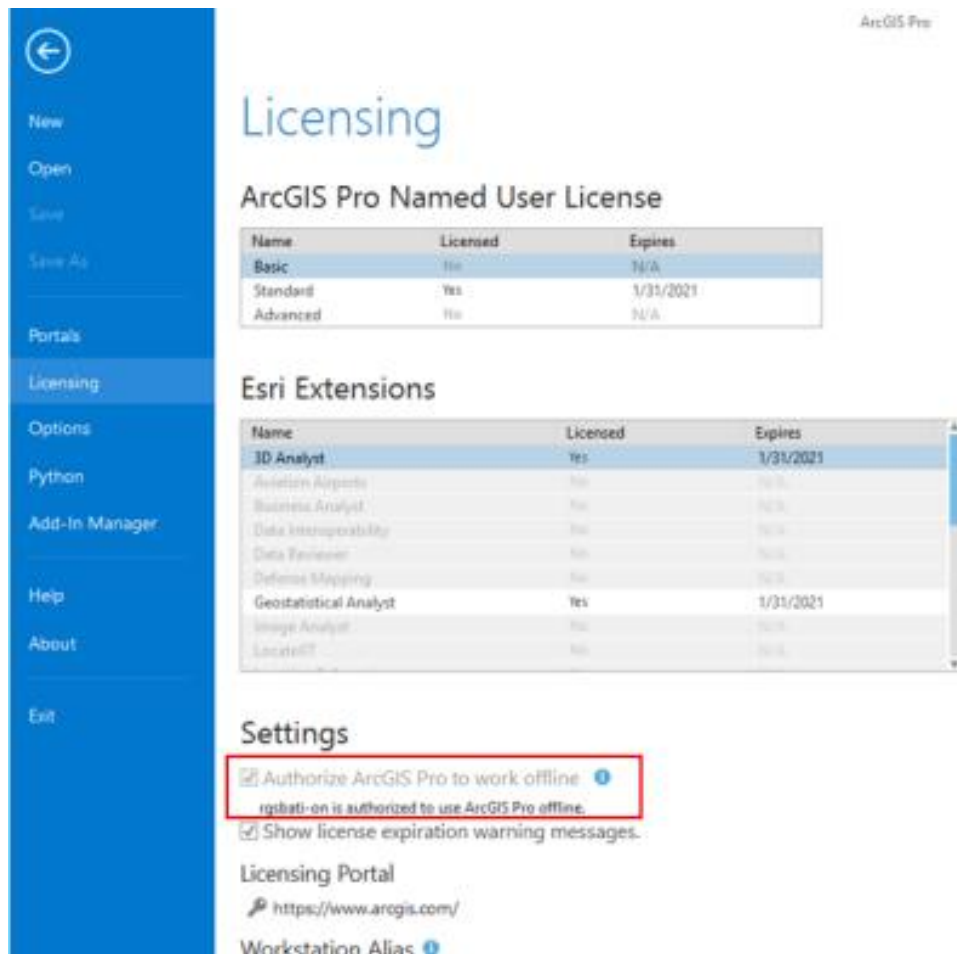
Refresh OK Cancel

11. If you prefer to use the ArcGIS Pro Offline, go to settings, then click the Licensing menu on the left hand side. Under the Settings field, tick the box next to “Authorize ArcGIS Pro to work offline”.

Please note :

- once you set ArcGIS Pro to work offline, you will no longer be able to use the same user credential when accessing ArcGIS Pro in other computers. You will need to lift the offline mode first to do so.
- On the left side of the settings, just above licensing, please click “add portal” to type-in the portal (<https://controlmap.denr.gov.ph/arcgis>) and after which right click to set as active portal.





Reference:

ESRI. (n.d.). ArcGIS Pro: Download, install, and authorize. Retrieved October 18, 2019, from <https://pro.arcgis.com/en/pro-app/get-started/install-and-sign-in-to-arcgis-pro.htm>.

ESRI. (n.d.). ArcGIS Pro. Retrieved October 18, 2019, from <https://www.esri.com/en-us/arcgis/products/arcgis-pro/overview>.