

**Sustainable
Tourism
Development
Project (STDP)**

A

B

**Transforming Communities Towards
Resilient, Inclusive and Sustainable
Tourism (TouRIST) Program**

**Sustainable Tourism
Development Project**



Sustainable Tourism Development Project (STDP)

A

B

Transforming Communities Towards Resilient, Inclusive and Sustainable Tourism (TouRIST) Program

Sustainable Tourism Development Project



TOURISM INDUSTRY PERFORMANCE

Tourism is a national concern and a driver of socio-economic growth and development for the Philippines

Tourism contributed
12.7% To country's
GDP in 2019

EQUIVALENT TO

₱2.48
trillion



Source: Philippine Tourism Satellite Account,
Philippine Statistics Authority



5.71 million
People employed in
tourism industries in 2019

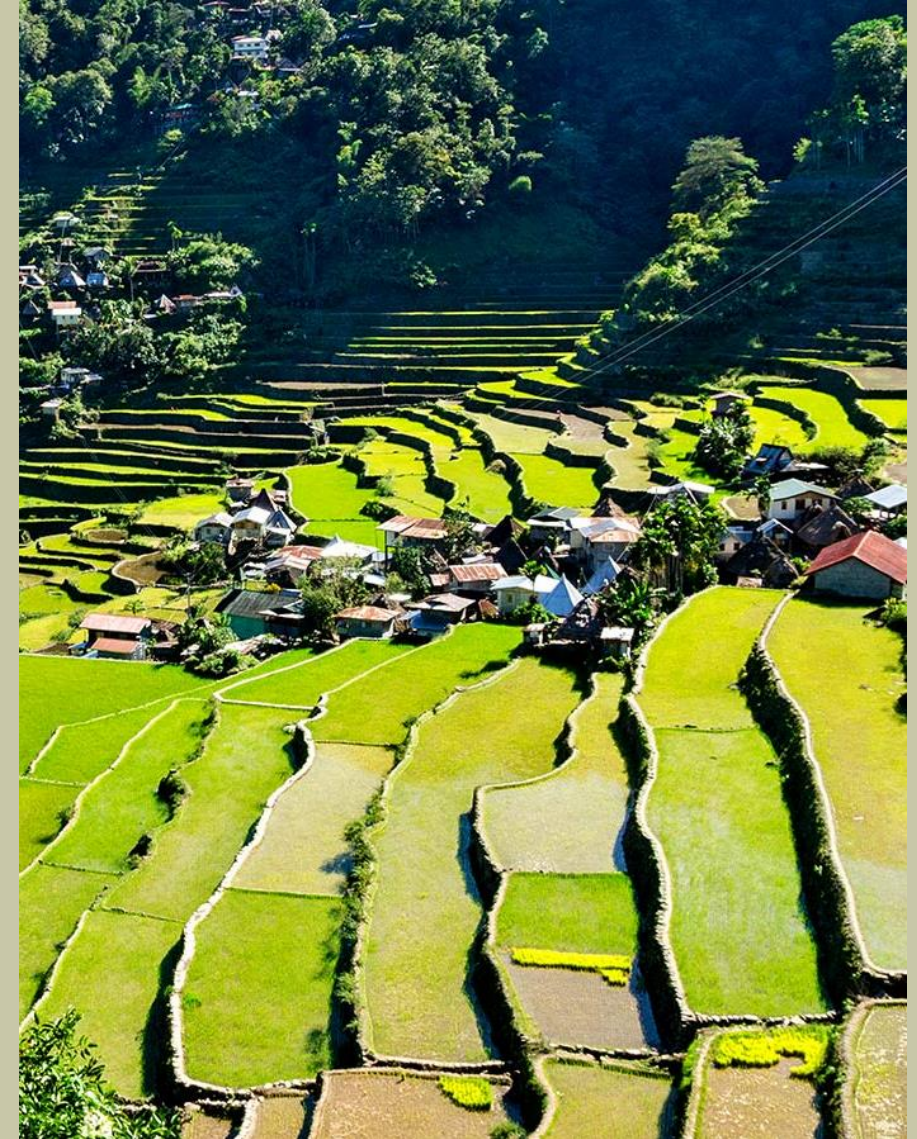
13.5% of total
employment

Source: Philippine Tourism
Satellite Account,
Philippine Statistics Authority

**The country
relies on tourism
for more than
10% of GDP and
employment**

**International arrivals in PH reached 8.3
million for 15.2% growth in 2019**

**BUT, PH continues to lag behind key ASEAN
competitors – Thailand (38.3 M), Malaysia
(25.8 M) and Singapore (18.5 M)**



TOURISM GROWTH IS NOT MANAGED

Development and management of tourism destinations is not seen in a holistic approach



National and local governments do not share the responsibility to manage growth and promote sustainable tourism



Infrastructure remained inadequate to support tourism development



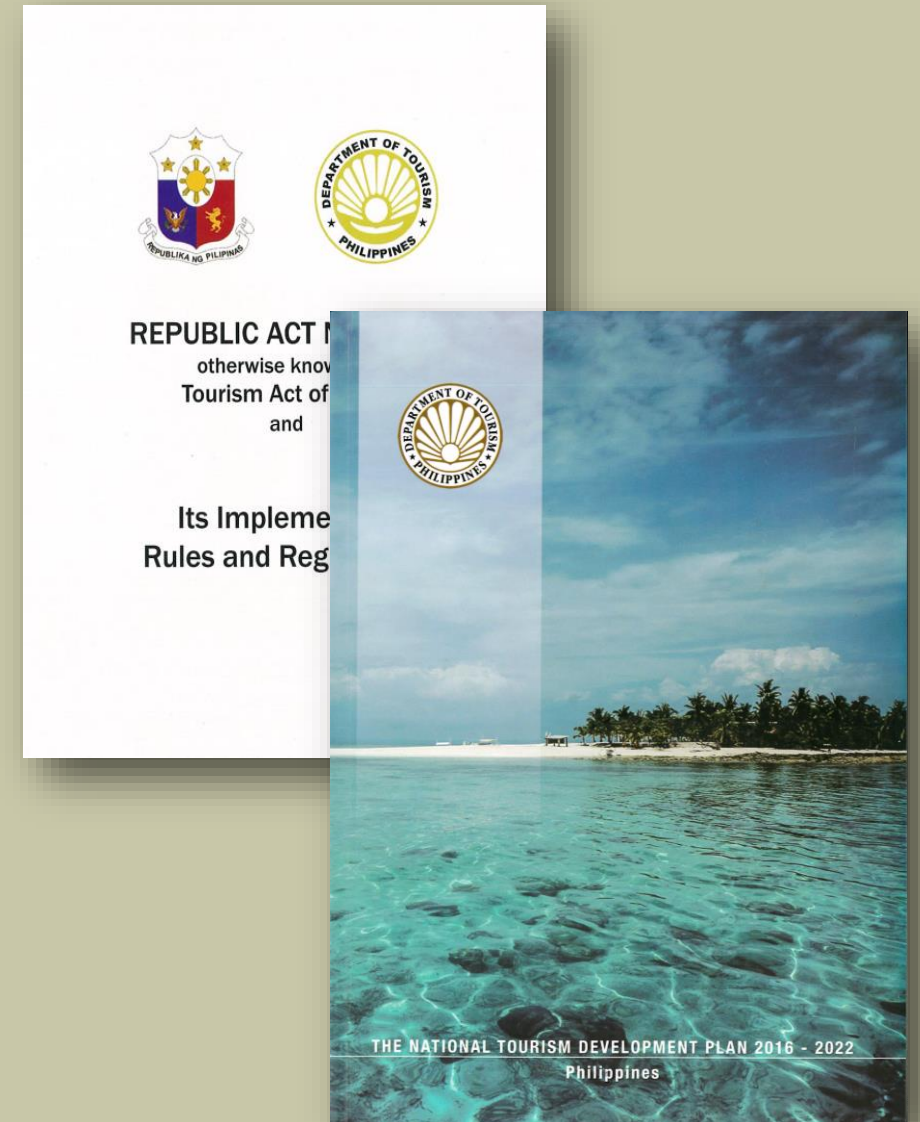
General Objective: To develop resilient, inclusive and sustainable tourism destinations

Pillars of the TouRIST Program

Resiliency – management and recovery from natural and human-induced disasters/crises.

Inclusivity – poverty alleviation, gender equality, and recognition of minorities and other disadvantaged groups; and

Sustainability – protection, preservation, and conservation of natural and cultural assets.



TouRIST PROGRAM SCOPE AND COVERAGE

- Covers all activities of the DOT relating to the development and promotion of tourism destinations, products and services in the country
- Enjoins the participation of concerned national and local government agencies, people's organization, non-government organizations, and other tourism stakeholders



TouRIST PROGRAM COMPONENTS & KEY RESULT AREAS

Component	Key Result Area
Infrastructure	<ul style="list-style-type: none">• Improved and safe mobility• Reduced environmental impact• Increased economic value• Reduced land and marine pollution
Livelihood	<ul style="list-style-type: none">• Increased jobs and employment• Increased participation of vulnerable groups
Disaster and Risk Management	<ul style="list-style-type: none">• Improved emergency preparedness & resiliency• Improved response mechanism and capacity
Policy and Standards	<ul style="list-style-type: none">• Increased in accredited establishments• Increased in tourism investments• Competent and dedicated workforce

FORMULATION OF TIDPs FOR TouRIST PROGRAM

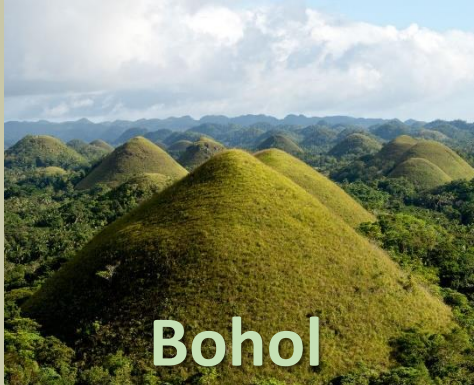
- Technical Assistance provided by the NEDA through the Project Development and other Related Studies (PDRS) Fund.
- Tourism Infrastructure Development Plans (TIDPs) will be formulated covering the SIRT Project and STDP destination areas.
- Outputs/Deliverables:
 - ❖ Identification and prioritization of essential infrastructure for tourism
 - ❖ Carrying capacity studies
 - ❖ Formulation of Pre-Feasibility Studies



TouRIST PROGRAM PROJECT AREAS



Sustainable Inclusive and Resilient Tourism (SIRT) Project



Sustainable Tourism Development Project (STDP)

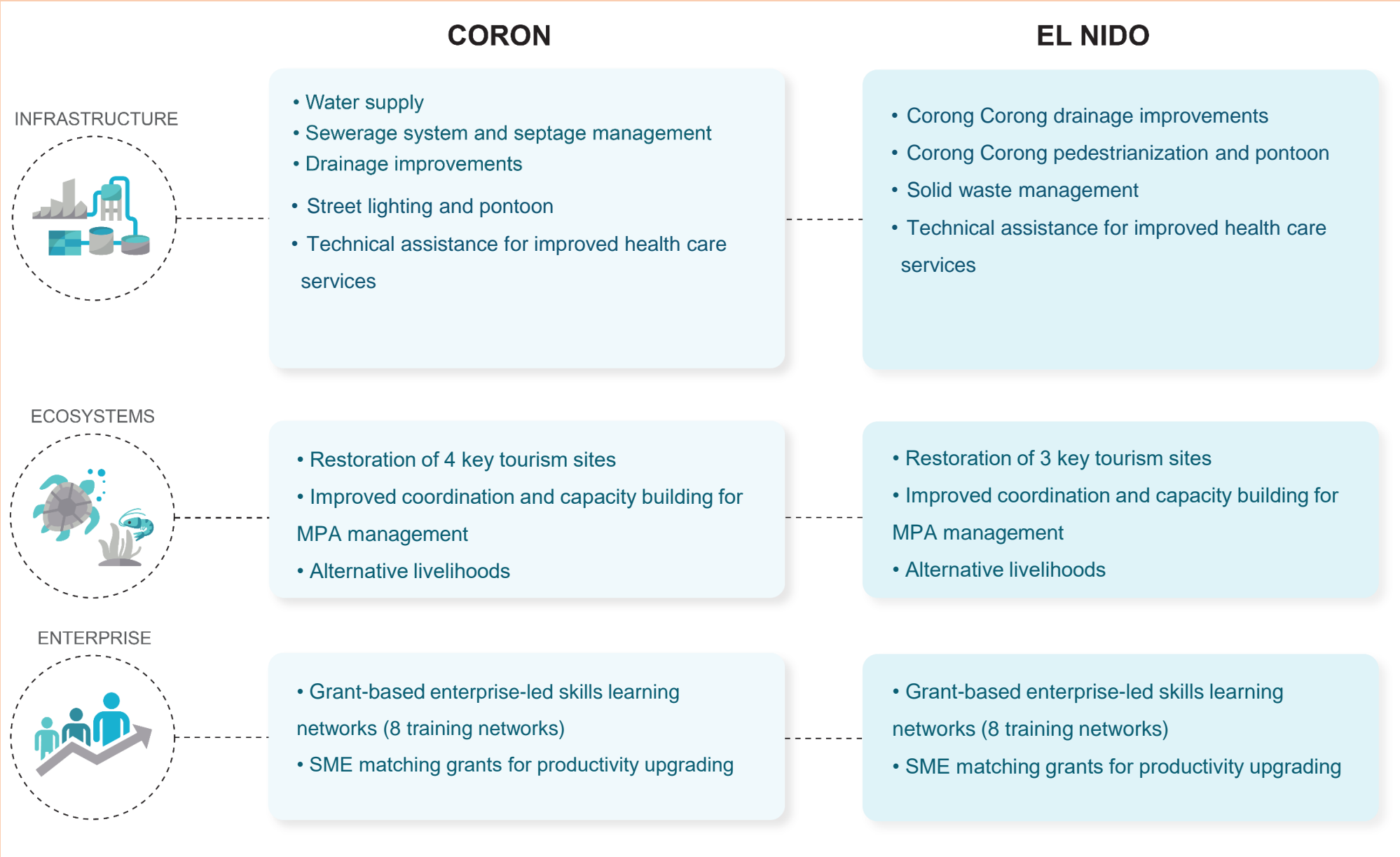


RATIONALE FOR CORON AND EL NIDO

- Economic significance of tourism
- Coron and El Nido have emerged as major tourism destinations
- Tourism pressures are contributing to environmental degradation
- Tourism SMEs face constraints
- Tourism worker shortages constrain tourism growth



STDP SCOPE AND OUTPUTS (2021-2026)



STDP FINANCING PLAN

Table 2: Summary Financing Plan

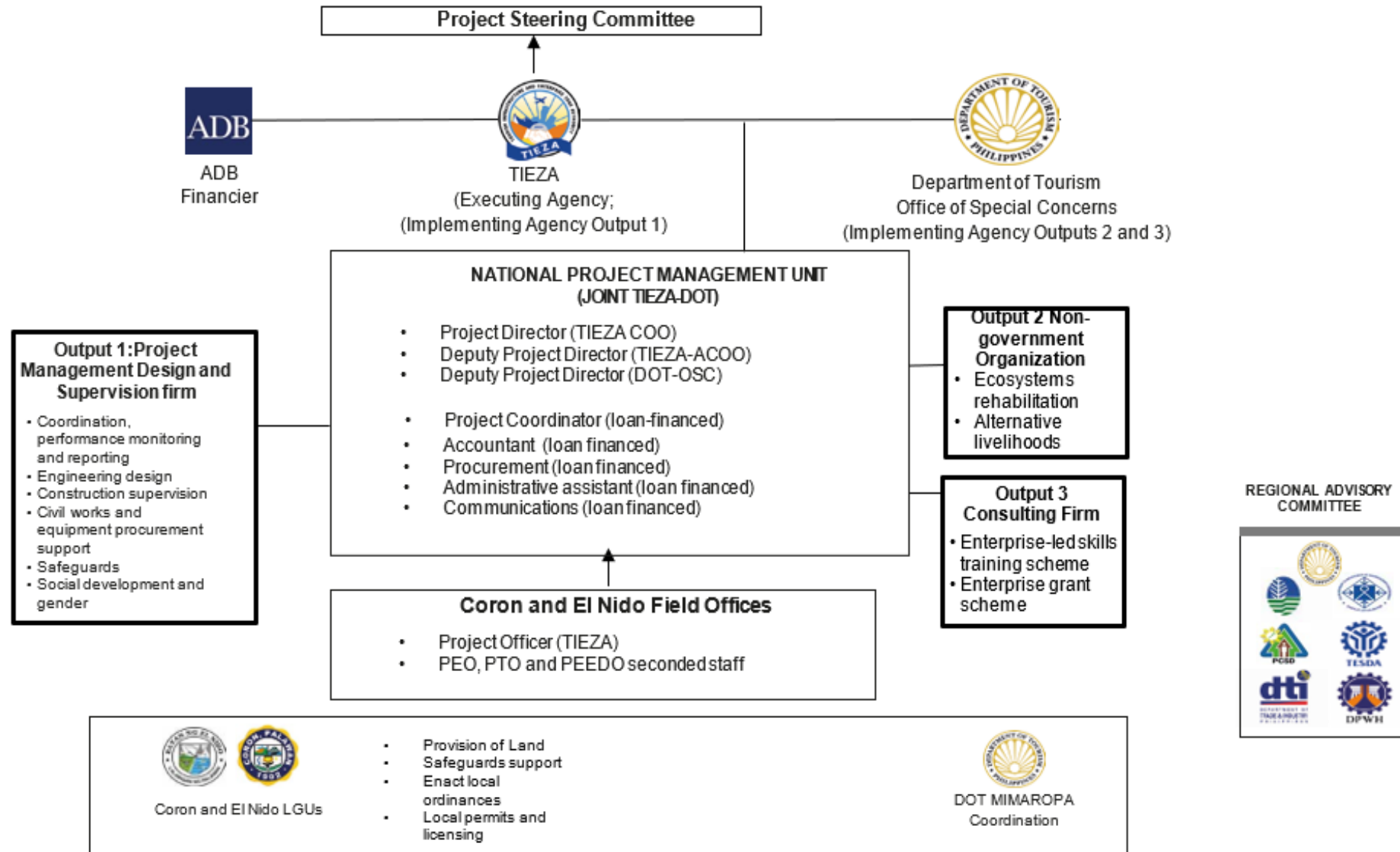
Source	Amount (\$ million)	Share of Total (%)
Asian Development Bank		
Ordinary capital resources (regular loan)	100.8	98.3
Tourism Infrastructure and Enterprise Zone Authority	0.5	0.4
Coron Local Government	0.3	0.3
El Nido Local Government	0.5	0.5
Republic of Korea e-Asia and Knowledge Partnership Fund (grant) ^a	0.5	0.5
Total	102.6	100.0

Figures may not sum due to rounding.

Source: Asian Development Bank estimates.

^a Administered by the Asian Development Bank.

STDP IMPLEMENTATION ARRANGEMENTS



A

END OF PRESENTATION



B



C

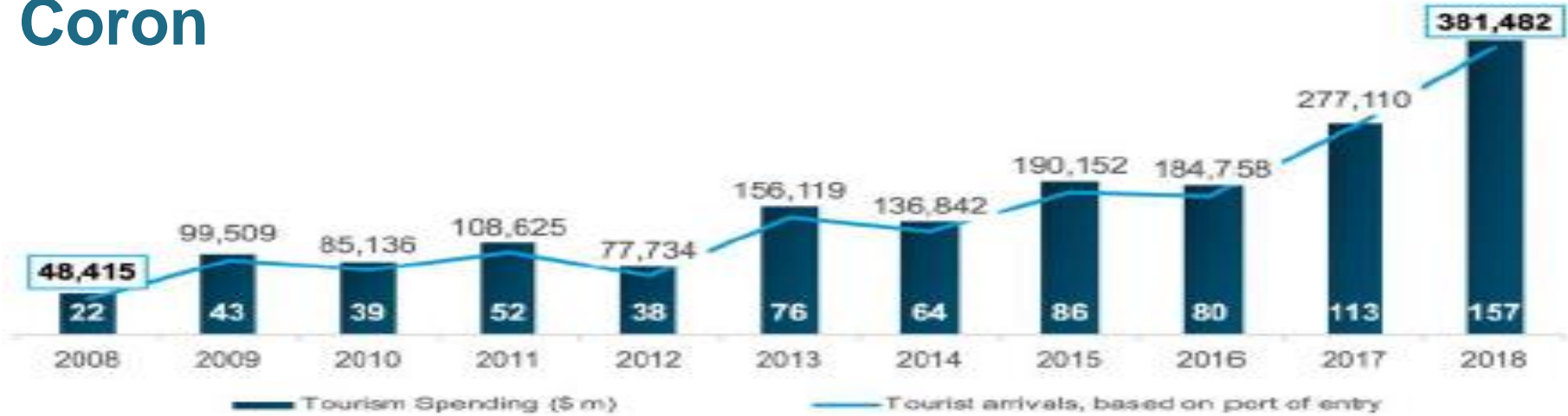
TOURISM IS EVERYONE'S BUSINESS

www.tourism.gov.ph



PALAWAN TOURISM GROWTH

Coron



El Nido

