



CALAMIANES RESILIENCE NETWORK

building resilient calamianes communities

FFP Palawan Partners' Meeting

26 - 27 April 2021



PARTNERS FOR RESILIENCE

Cordaid



**Forest
Foundation
Philippines**

Let's grow together.



CRN General Assembly Membership 46 Members

National Government Agencies

- **PCSDS, NCIP, DENR CENRO, BFAR, PCG, DepEd, DTI, DPWH, DSWD, FMB-BPRMO, NHA, DOH, CAAP Busuanga, BFP Coron, BFP Busuanga**

Local Government Units

- **Busuanga LGU, Coron LGU, Culion LGU, Linapacan LGU**

Academic Institutions

- **PSU Coron, PSU Linapacan, WPU Busuanga, LCC Culion**

CSOs/NGOs/Humanitarian

- **AVT SAC, C3 Philippines, CFI, Cordaid Philippines, ISO Culion, MFI, PHILSSA-PAGE, PRC, Samdhana, PCGA, Path Foundation (Fish Right), CCID**

POs

- **Calait Nurunutan, Saragpunta, Simbahang Lingkod ng Bayan, CWBA, CIG MPA Network, CATE, CAFEDWASA, SRWSA, Bambuhay Handicrafts**



THE CRN WORKING GROUPS



**Ecosystem
Management and
Restoration Working
Group (EMR WG)**



**Socio-Economic and
Cultural Working
Group (SEC WG)**

**Disaster Risk Reduction and
Climate Change Adaptation
Working Group (DRR-CCA WG)**



**Advocacy,
Information and
Research Working
Group (AIR WG)**





Ecosystem Management and Restoration Working Group



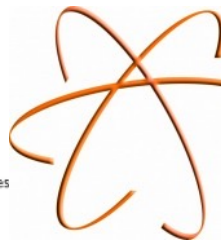
CWBA

Cordaaid





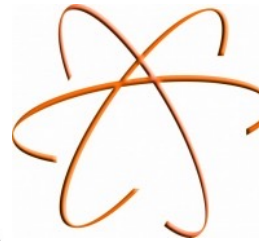
DRR/CCA Working Group



Socio-Cultural and Economic Working Group



Partnerships for Sustainable Communities



The Samdhana Institute



Malampaya FOUNDATION

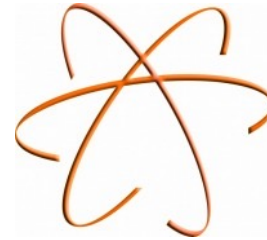
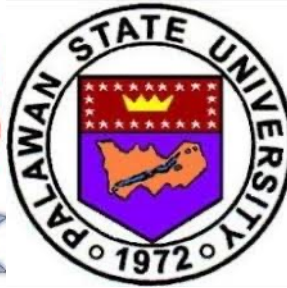
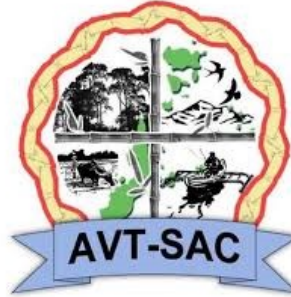


CWBA



Calamianes Association of Tourism Establishments
Towards a Responsible and Sustainable Tourism Industry

Advocacy, Information and Research Working Group



Malampaya
FOUNDATION





CRN Network Organizational Composition

The Board of Trustees/ Officers

Chairperson: **Engr. Fernando Lopez** – MDRRMO Coron

Vice Chairperson: **Ms. Vivien Facunla**

PATH Foundation Philippines, Inc. (PFPI)

Secretary: **Mr. Mark Andrew Sandoval**

Philippine Red Cross – Palawan Chapter (PRC)

Treasurer: **Ms. Evelyn Mendenilla**

Philippine Coast Guard Auxiliary (PCGA)

Auditor: **Ms. Consuelo Magallanes** – Coron Watershed
Beneficiaries Association (CWBA) /
Calamian Federation of Waterworks Association
(CAFEDWASA)



CRN Network Organizational Composition

BOT Members:

Mr. Allan Guian

Mr. Freddie Tejada

Mr. Armando Lagrosa, II

Mr. Peregrino Bagunu, Jr.

Mr. Arnolodo Blaza, Jr.

Ms. Dolina Tabla

Ms. Maria Theresa Rabe

Ms. Shellane Naguit

Dr. Raymond Rey

Ms. Carolyn Esmenda

Ms. Jianne Cheney Batuigas

- MDRRMO Busuanga

- MDRRMO Linapacan

- MDRRMO Culion

- DENR FMB-BPRMO

- DENR CENRO Calamianes

- Culion Foundation, Inc. (CFI)

- Busuanga LGU (MAO)

- Samdhana Institute

- Palawan State University – Coron Campus

- Provincial Environment and Natural Resources (PENRO)

- Institute of Social Order (ISO)



Current programs on natural resources management [in line with the local plans of Calamianes]

CORON (*on environment sector*)

- Implementation of LCCAP Plan;
- Tree planting activities;
- Local Disaster Risk Reduction Management Program;
- Removal of COT to infested areas/site;
- Application of Water Use Permit;
- Conduct training for Bantay Gubat and Bantay Dagat;
- Eliminating Slash and Burn;
- Planting of Fire Breaker plant species;
- Implementation of Fishery Code;
- Riverbanks protection by riprap and planting of trees;
- Clean up drive on all rivers and creeks;
- Formulation of Ancestral Domain Management;
- Seminars and Training on Climate Change.



CORON (on livelihood sector)

- Distribution of Seedlings to Farmers;
- Establishment of Barangay Nursery, Establish Seedlings Nursery;
- Vegetables production;
- Improvement/maintenance into potable water supply;
- Conduct Livelihood Training.



CULION *(on environment and livelihood sector)*

Disaster Prevention & Mitigation Program – Environmental Initiatives

- Reforestation Project in Osmena, Libis, Tiza, Malaking Patag & Jardin;
- Mangrove Planting;
- Coastal Clean-up;
- De-Clogging of Canals;

Environmental Protection & Preservation

- Coastal Marine Eco-System Protection;
- Watershed Protection;
- Forest & Mangrove Protection;
- Environmental Laws Enforcement;
- Livelihood Assistance;
- CRMP Institutionalization;
- MPA Extension;



BUSUANGA (*on environment sector*)

- At least 20% of municipal waters are under certain level of management and protection;
- Reduced illegal fishing activities within municipal waters;
- Increased number of registered fishers and license gears and fishing vessels by 50%;
- Implement fishing effort restriction based on adopted right-sizing policy;
- Improve capacity of fishers, MFARMC/BFARMC and policy makers on fisheries management (EAFM);
- Establish sustainable and resilient conservation enterprises;
- Improve knowledge and level of awareness of fishers and communities on Ecosystem Approach to Fisheries Management, Climate Change Adaptation, and gender.



BUSUANGA (*on environment sector*)

- Improve capacity on vulnerability and risk assessment and climate change adaptation and mitigation;
- Improvement in Live Coral;
- 1% increase in mangrove extent and density (about 18ha increase);
- Maintain seagrass species diversity;
- Maintain forest land cover;
- Increase in number and coverage of MPAs;
- Maintain presence of indicator species;
- Maintain number of fauna and endemic species;
- Co-management Agreement of all watersheds within the municipality;
- Local Green Program.



BUSUANGA (on livelihood sector)

- Diversified Crop Production Program;
- Organic Farming;
- Swine Dispersal Program;
- Alternative Livelihood Program;
- RSBSA Enrollment (*registration of famers & fisherfolks in the RSBSA*);
- Insurance under PCIC (*enroll farmers & fisherfolks in the insurance under PCIC*);
- FishR (*Fisherfolk Registration*);
- Fishery Resource Management Program;
- Integrated economic zone;
- Creation and strengthening of MEEDO and MENRO.



LINAPACAN *(on environment sector)*

- Provision for support to Climate Change Adaptation (CCA);
- Watershed development, management, and protection;
- Other related environmental management activities;
 - Oplan linis
 - Tree planting activities
 - Coastal ulean-up
 - Rehabilitation and repair of concrete canals

CRN 5-Year Plan

EMR Working Group



- Lobbying for the mandatory allocation of LGU for Environmental Protection and Conservation and to have a permanent MENRO Office;
- Support to LGU and Community activities on Ecosystem Management and Restoration initiatives;
- Support initiatives to strengthen environmental protection through law enforcements (terrestrial and coastal/marine);
- Support to the Review of Calamian Coastal Resource Management Plan;
- Support local initiatives to increase community knowledge on environmental awareness and advocacy through organizing and capacity building;

CRN 5-Year Plan

DRR/CCA Working Group



- Risk Assessment Database for Calamian;
- DRR CCAM IEC in schools, community and tourism establishments;
- Resource Mobilization to increase capacity and capability of Calamian MDRRMOs and its personnel on DRR and CCAM, equipment and tools, as well as renewable energies for off-grid and GIDA areas;
- Provide technical and other assistance to all Calamian MDRRMOs on crafting of different plans;
- Conduct of volunteers management training for Calamian MDRRMOs;
- Support to strengthening of early warning systems of all Calamian MDRRMOs.

CRN 5-Year Plan

SCE Working Group



- Water Resilience Program for Calamianes;
 - Support to Calamian Federation of Rural Waterworks and Sanitation Association
 - Conduct of Calamian-Wide Watershed Characterization Study
 - Support to Integrated Watershed Management Initiatives in Calamian
- Support to the establishment of Calamian IP Resource Center and Ethnographic Survey;
- Support to the Promotion of Primary health care and reduction of malnutrition;
- Support to Education through infrastructure and capacity development for teachers;
- Support to the Tourism sector through skills training of tour guides and operators;
- Support to the Food Resiliency Programs of 4 Calamian MAOs;
- Support to alternative livelihood options of LGUs and other member organizations.

CRN 5-Year Plan

AIR Working Group



- Advocate for Calamian Watershed Characterization Study (Ridge to Reef assessment);
- Support conduct of research on reproductive health access for youth and the poor;
- Research on carrying capacity of tourist sites in Calamian;
- Advocacy on food security through bio-intensive gardening and climate smart agriculture;
- Advocate for the implementation and modelling of Integrated Risk Management;
- Advocate for proper Solid Waste Management implementation in Calamian;
- Advocate for Watershed and water management;
- Advocate for implementation and enforcement of environmental laws and policies;
- Advocate for IP Sensitivity in governance and health programs.



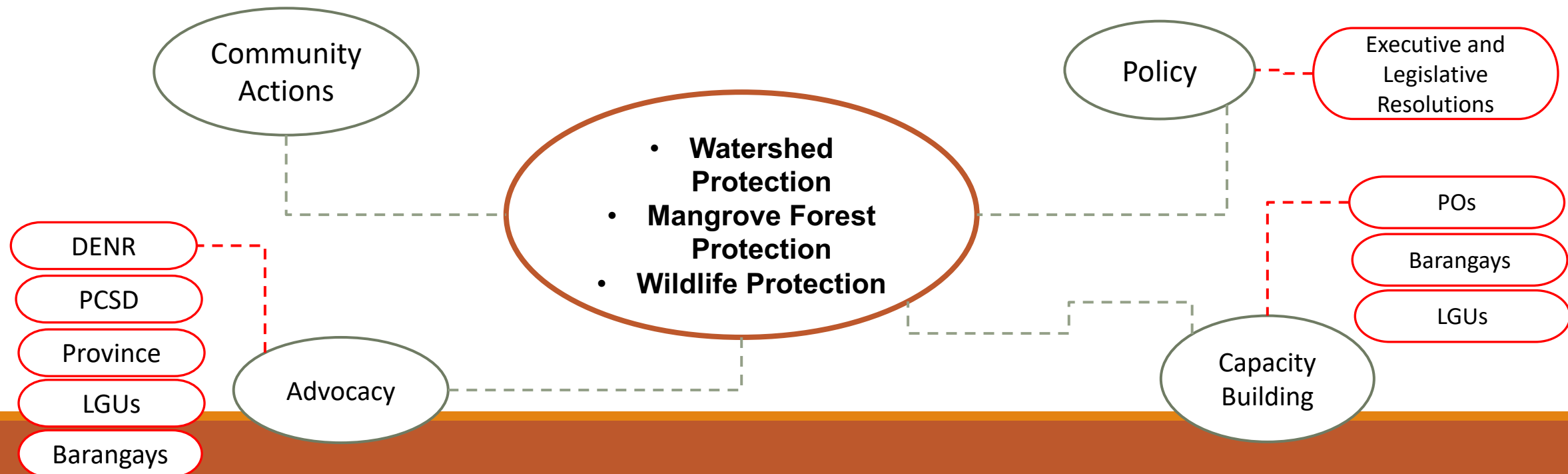
CRN Collaboration Pathways in advancing forest conservation efforts moving forward

In terms of:

Watershed protection - collaboration with the LGUs with CBFM organizations, and with WMCs (*if already established*);

Mangrove forest protection – collaboration will be done with MPA networks and fellow NGOs;

Wildlife protection - with PCSD and DENR





CRN 2018- 2020 Accomplishments

- CRN was *recognized by 4 LGUs of Calamian* in 2018 and 2019;
- Co-organized the *Calamianes Water Summit* which produced a federation of Calamian Federation of Water and Sanitation Association;
- ***Conducted Resource Mobilization Activities*** for the Forest Foundation Philippines, and Philippine National Red Cross, Assisi Development Foundation, Canada Fund, UNEP & ICRI, Asian Development Bank;
- *Provided technical assistance to LGU Coron* in formulating its Climate Change Adaptation Framework (CCAF) and Local Climate Change Action Plan (LCCAP), Municipal Disaster Risk reduction Plan (MDDRMP);
- *Partnered with the Fish Right Project* to pursue joint undertaking in updating the Integrated Fisheries Management Resources Plans of BCCL;



CRN 2018- 2020 Accomplishments

- *Presented CRN at Provincial and National Disaster Resilience Summit as a good practice in terms of multi-stakeholder convergence network for resilience building;*
- Formulation of Calamian Federation of Waterworks Association (CAFEDWASA);
- Organizational Strengthening initiatives
 - SEC and BIR Registration
 - Hiring of CRN Project Associate
 - Conduct of regular Execom and General Assembly Meetings
 - Resource Mobilization Planning
- Race for Resilience: Run and Plant a Tree with LGU Coron in celebration of the National Disaster Resilience Month;
- 1st Calamian Environmental Law Enforcement Summit: Strengthening Enforcement towards Resilience;
- IPRA Law Orientation with CRN Members conducted.

CRN 2020 Projects

Humanitarian Response in Calamianes COVID-19 Infection Prevention and Control (IPC) support through Calamianes Resilience Network (CRN) in Calamianes

Project Holder: CORDAID and Partners for Resilience (PfR)

- 74 Portable Handwashing Units , 148 IEC materials about COVID-19 and Steps on Proper Handwashing , 16 queuing lanes to practice social distancing, were constructed and deployed on May 14, 2020 in the 4 Municipalities in Calamian.



Provision of Hygiene Supply Liquid Handwashing Soap for the Portable Handwashing Units



PPEs Distributed to CRN Partner Organizations





Deployed Portable Handwashing Units in Calamianes

Increasing Calamianes Resilience through Watershed Mapping and Management Planning (I-C-Resilience)



Cordaid 
BUILDING FLOURISHING COMMUNITIES

 **Forest
Foundation
Philippines**
Let's grow together.

Project background

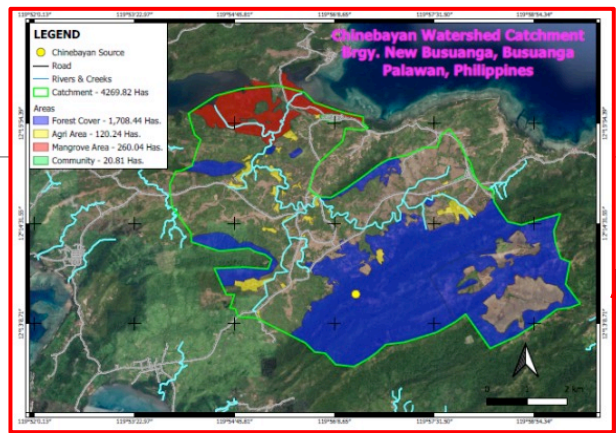
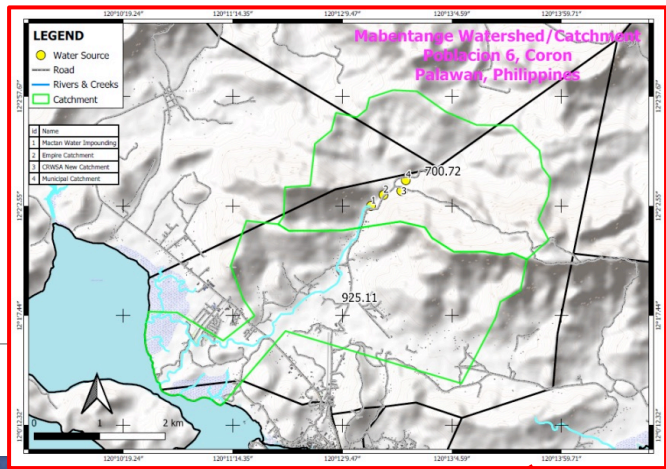
Project Title: Increasing Calamianes Resilience through Watershed Mapping and Management Planning (I-C-Resilience)

Project Duration: 9 months (March – December 2020)

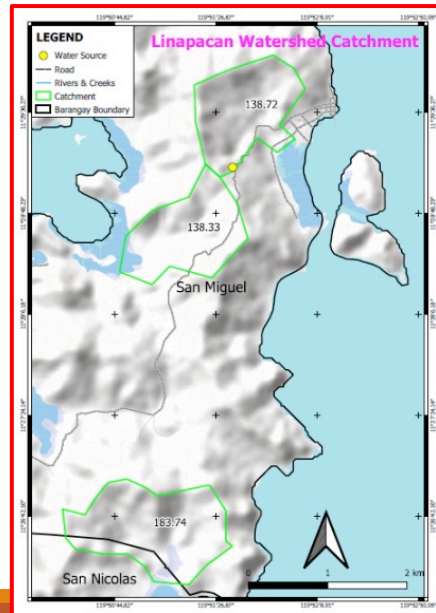
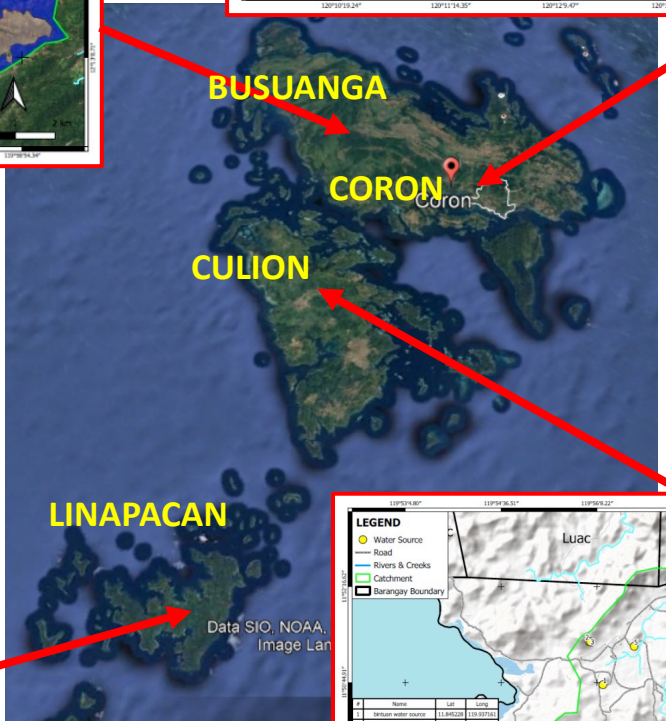
Project Location(s): Calamianes Islands Group

Project Holder: CORDAID in collaboration with Calamianes Resilience Network (CRN)

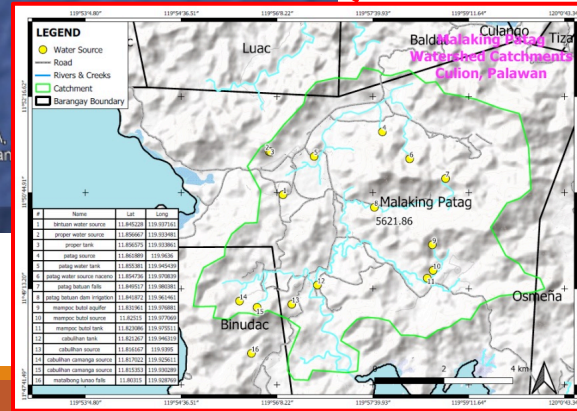
MABENTANGEN, CORON



CHINEBAYAN, BUSUANGA



SAN MIGUEL, LINAPACAN



MALAKING PATAG, CULION

Key accomplishments

- Watershed characterization study in 4 watershed areas;
- Watershed Management Plans drafted;
- Socio-Economic baseline data and maps generated;
- Barangay Watershed Management Committee;
- Collaboration and partnership with the 4 LGUs, support from partner communities, initial dialogues and planning conducted.



CRN COVID-19 Infection Prevention and Control Practices

- CRN strictly follows the guidelines on COVID-19 protocols enforced by the 4 LGUs
 - Beforehand communication and sound coordination of CRN among partner LGUs, BLGUs, and the community before any activities are to be conducted
-
- Limited number of participants during workshops
 - Temperature checking upon entry and practice of hand rub hygiene
 - Briefing and Reminders on COVID-19 are conducted in every workshops
 - Provision of PPEs and availability of hand rub disinfectant to participants
 - Provision of learning kit with COVID-19 flyer to each participant
 - Wearing of facemask
 - Practice of social distancing
 - Packed snacks and meals for each participants
 - Use of Face shields
 - Online coordination and meetings
 - Provision of Vitamins for the team and LRT



Matamang Salamat!
#Staysafe #Stayhealthy
#Stayresilient

