



PALAWAN COUNCIL FOR SUSTAINABLE DEVELOPMENT

Natural Resources Management in Palawan Landscape

Palawan Sustainable Development Strategy and Action Plan (PSDSAP) and the Palawan Sustainable Development Agenda (Palawan Agenda 2016-2024)

Presented by: **John Francisco A. Pontillas, EnP**

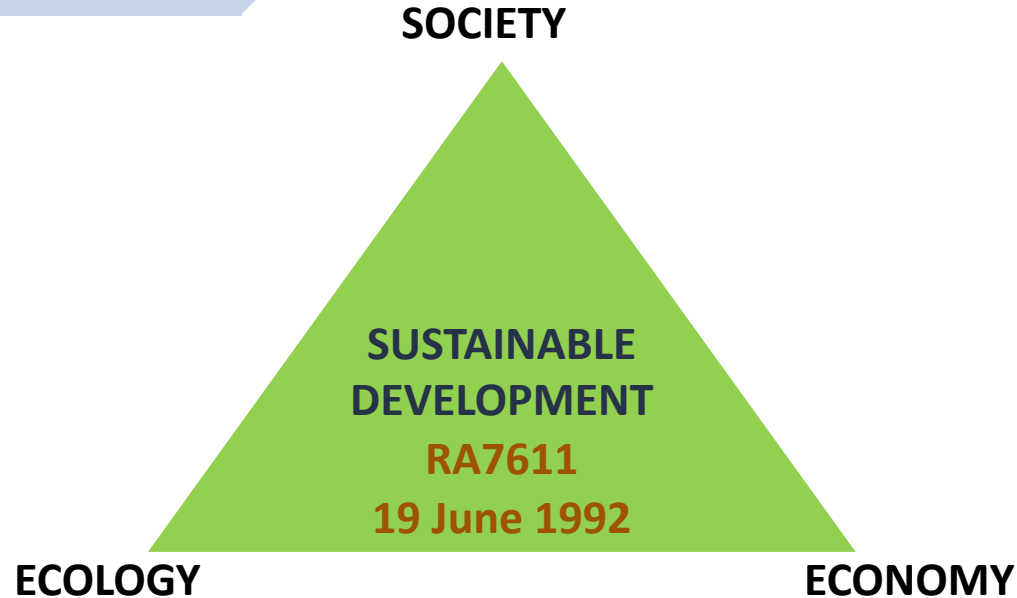
Chief, ECAN Policy Research and Planning
Division, PCSDS

POLICY FRAMEWORK

A framework to guide government agencies concerned in the formulation and implementation of plans, programs and projects affecting the environment and natural resources of Palawan.

Shall be incorporated in the Regional Development Plan of Region IV

All local governments in Palawan and the concerned national and regional government agencies operating therein shall coordinate with PCSD and align their projects and the corresponding budgets with the projects, programs and policies of the SEP



VISION

**PALAWAN, AN INNOVATIVE AND DYNAMIC
GLOBAL CENTER OF SUSTAINABLE
DEVELOPMENT.**

MISSION

**PCSDS AS THE DRIVER OF ENVIRONMENTAL
CONSERVATION AND INCLUSIVE DEVELOPMENT
IN PALAWAN, A BIOSPHERE RESERVE AND
SCIENCE-FOR-SUSTAINABILITY SITE, GUIDED BY
THE STRATEGIC ENVIRONMENTAL PLAN.**



Palawan
Council for
Sustainable
Development

THE SEP AND THE SUSTAINABLE DEVELOPMENT GOALS



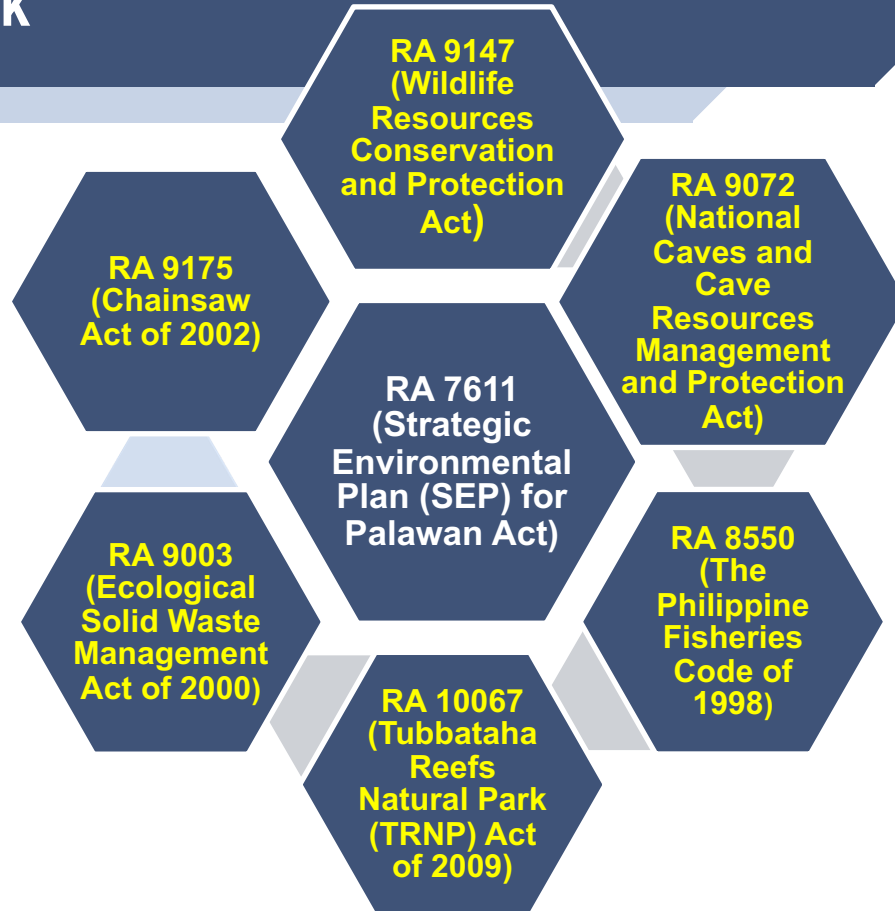
THE PCSD



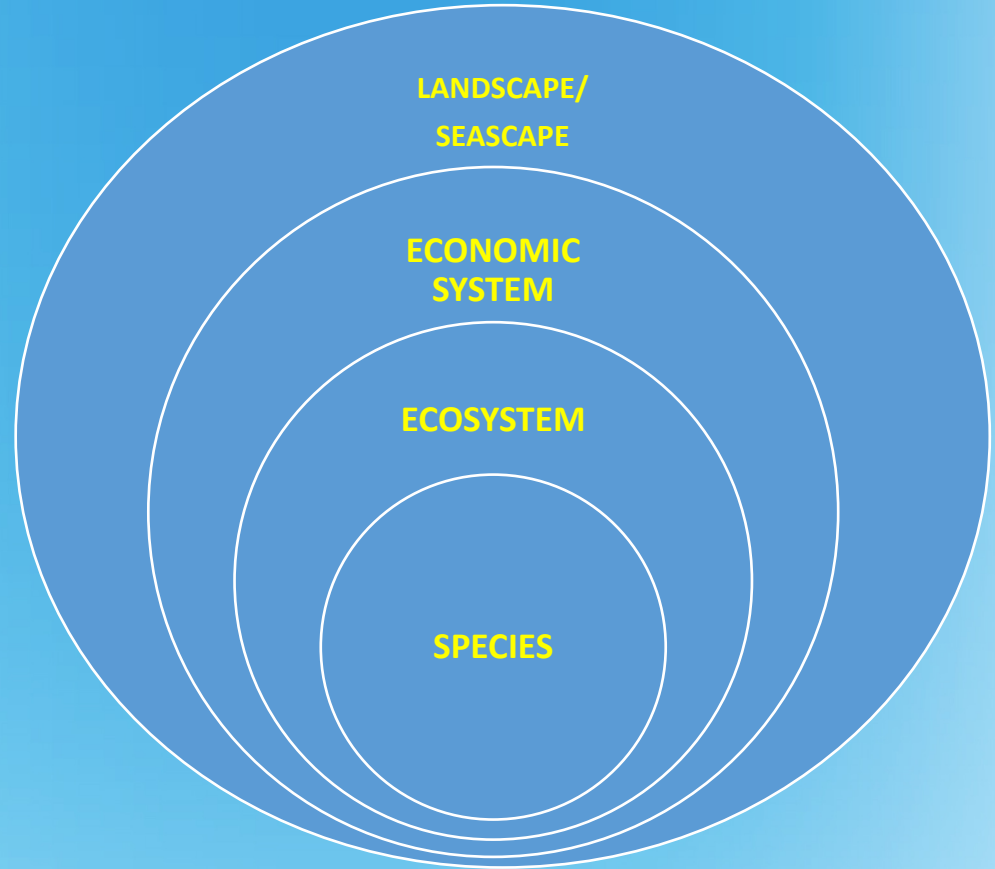
- Responsible for the governance, implementation of and provision of policy direction to the SEP.

POLICY FRAMEWORK

SEP + 6



FROM SPECIES TO LANDSCAPE/SEASCAPE



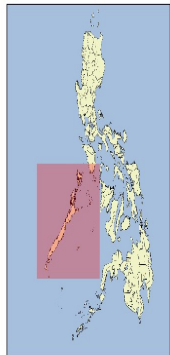
Draft Coastal and Terrestrial
ECAN of the Province of
Palawan

0 30 60 90 120 km

1:720000

Legends

Rivers	
Municipal Boundaries	
Marine Habitats	Area (ha)
Corals	292,517
Seagrass/Seaweeds	89,295
Coastal ECAN	
Core Zone	78,270
Buffer Zone	31,714
NUPAS	187,148
MPA	23,133
Proposed Core Zone	28,842
Proposed Buffer Zone	25,849
Proposed Expansion	214
Multiple Use Zone	4,581,393
Terrestrial ECAN	
Core Zone	400,746
Restricted Use Zone	178,529
Controlled Use Zone	226,287
Traditional Use Zone	146,823
Multiple Use Zone	500,867



Coral Condition	Sites	Percentage
★ Excellent (44%-100% LCC)	118	48%
★ Good (33%-43% LCC)	36	15%
★ Fair (22%-32% LCC)	48	20%
★ Poor (00%-21% LCC)	43	18%

Ridge-to-Reef management framework of ECAN zones

Terrestrial Core Zone

Restricted Use Area

Controlled Use Area

Buffer Zone

Traditional Use Area

Multiple Use Zone

Coastal Core Zone

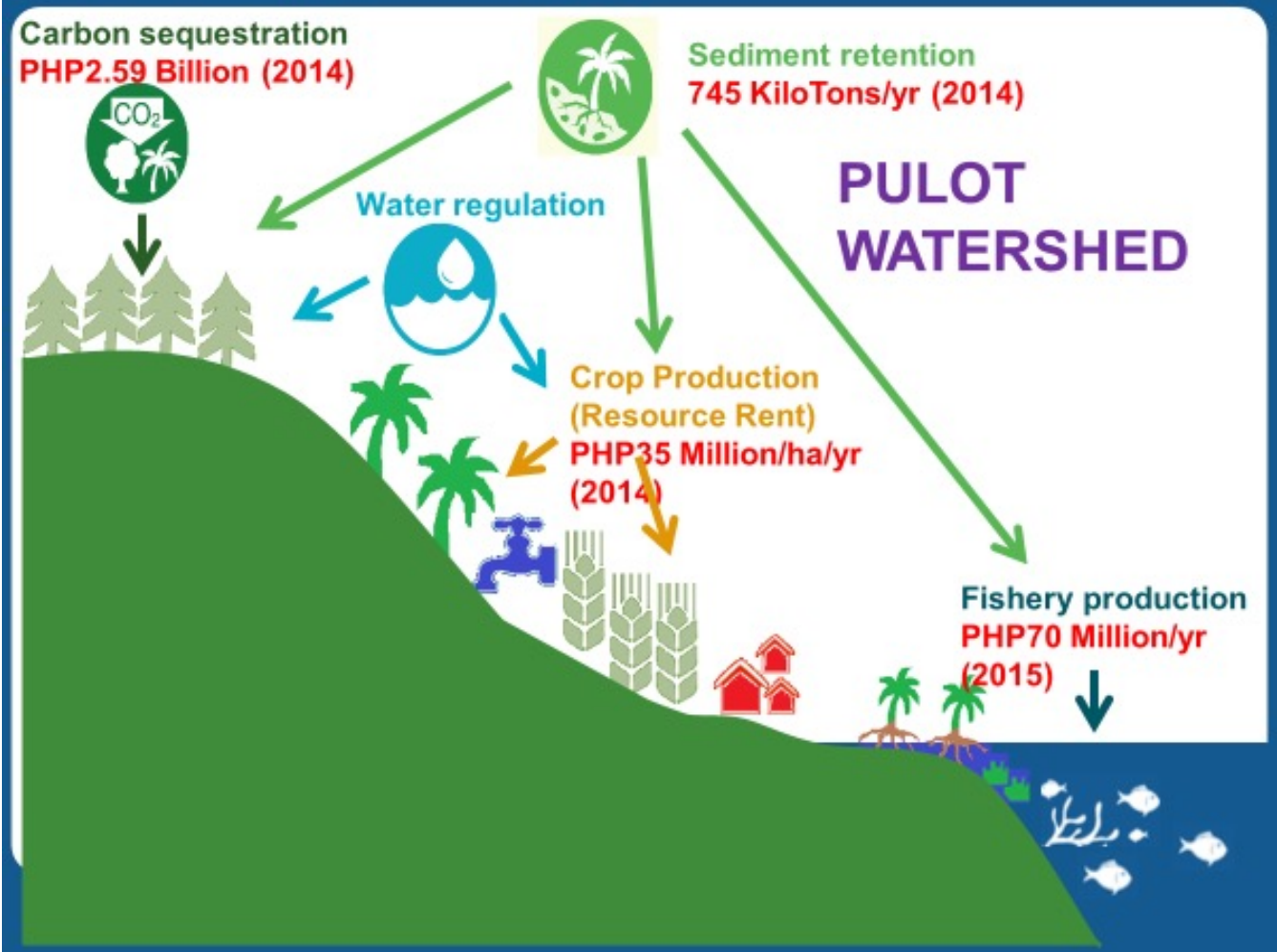
Transition/Buffer Area

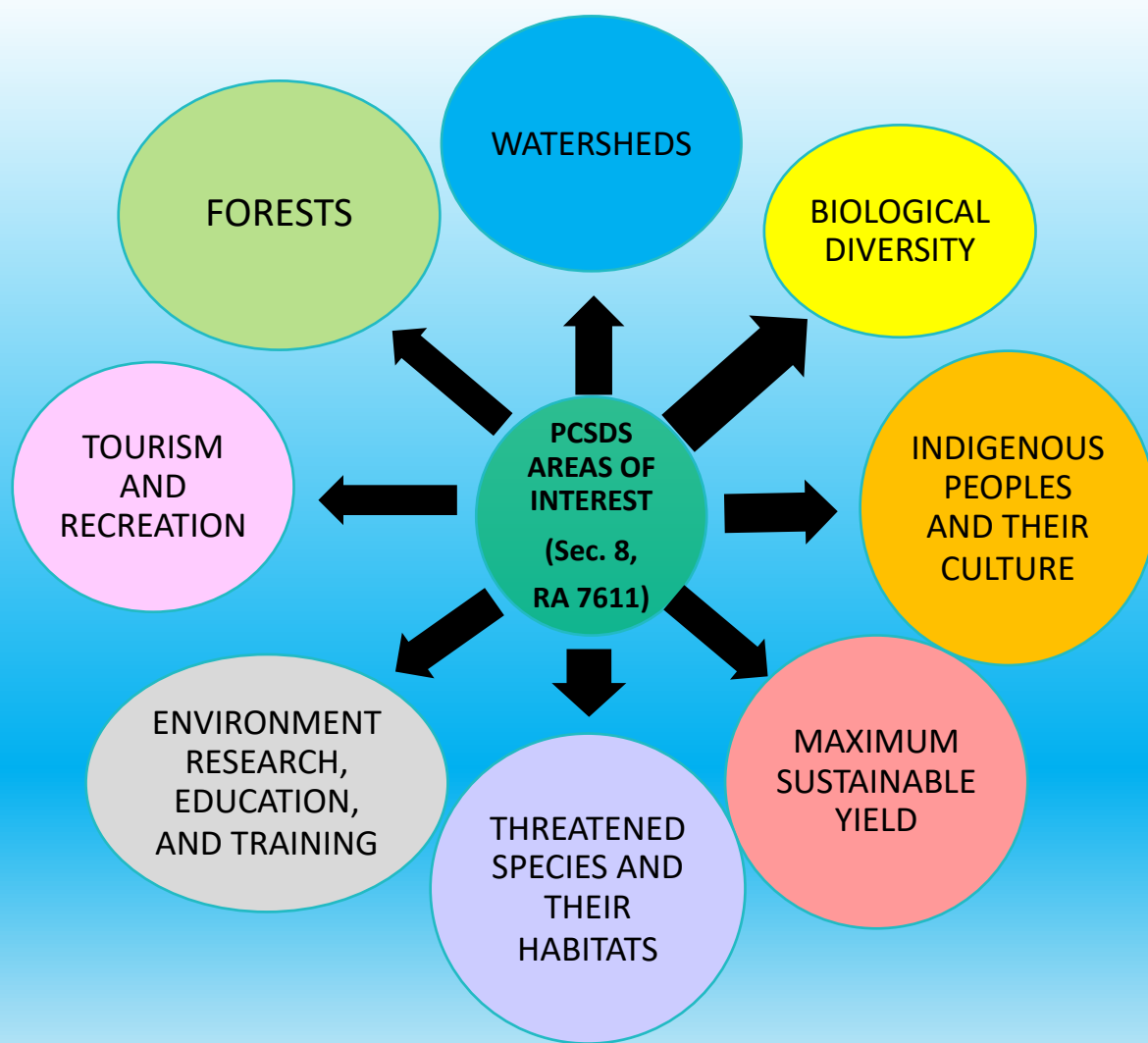
Multiple use Zone

Sustainable/General Use Area

**FOREST SITUATIONER....
Palawan-2010-2015**

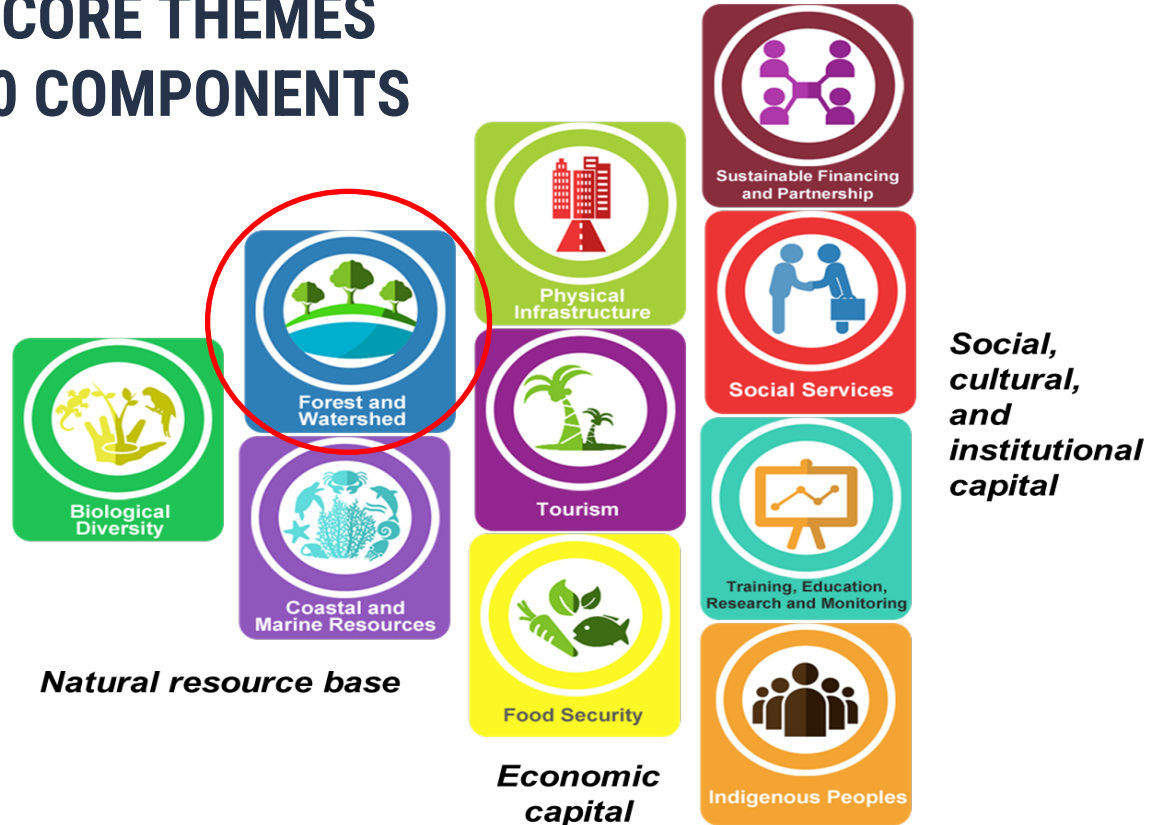
**ACCOUNTING AND
VALUATION OF
ECOSYSTEM GOODS AND
SERVICES**



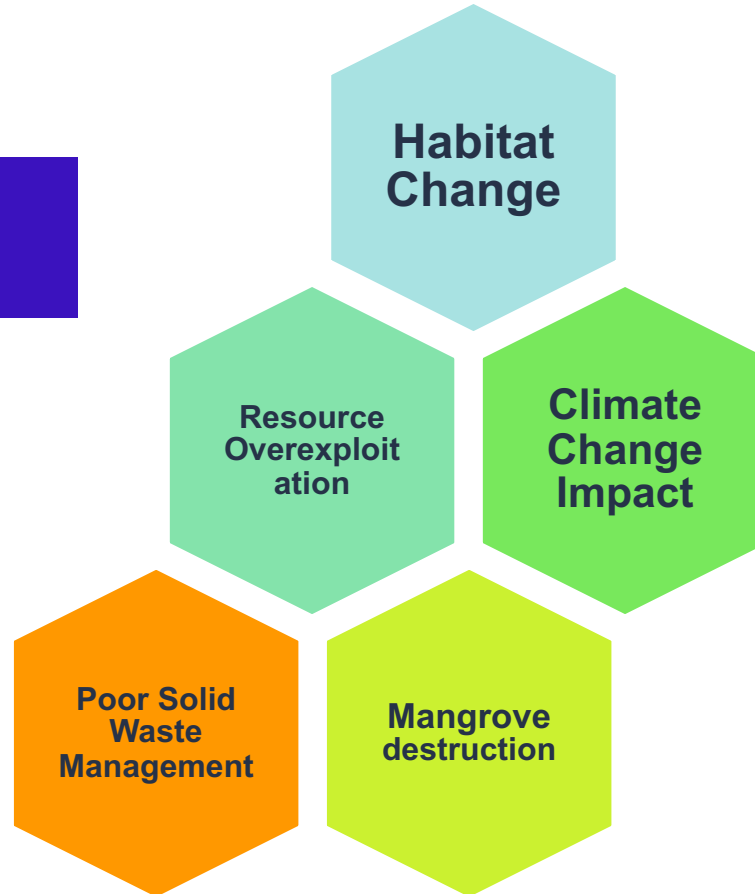


2015 PALAWAN SUSTAINABLE DEVELOPMENT STRATEGY AND ACTION PLAN (PSDSAP)

3 CORE THEMES 10 COMPONENTS



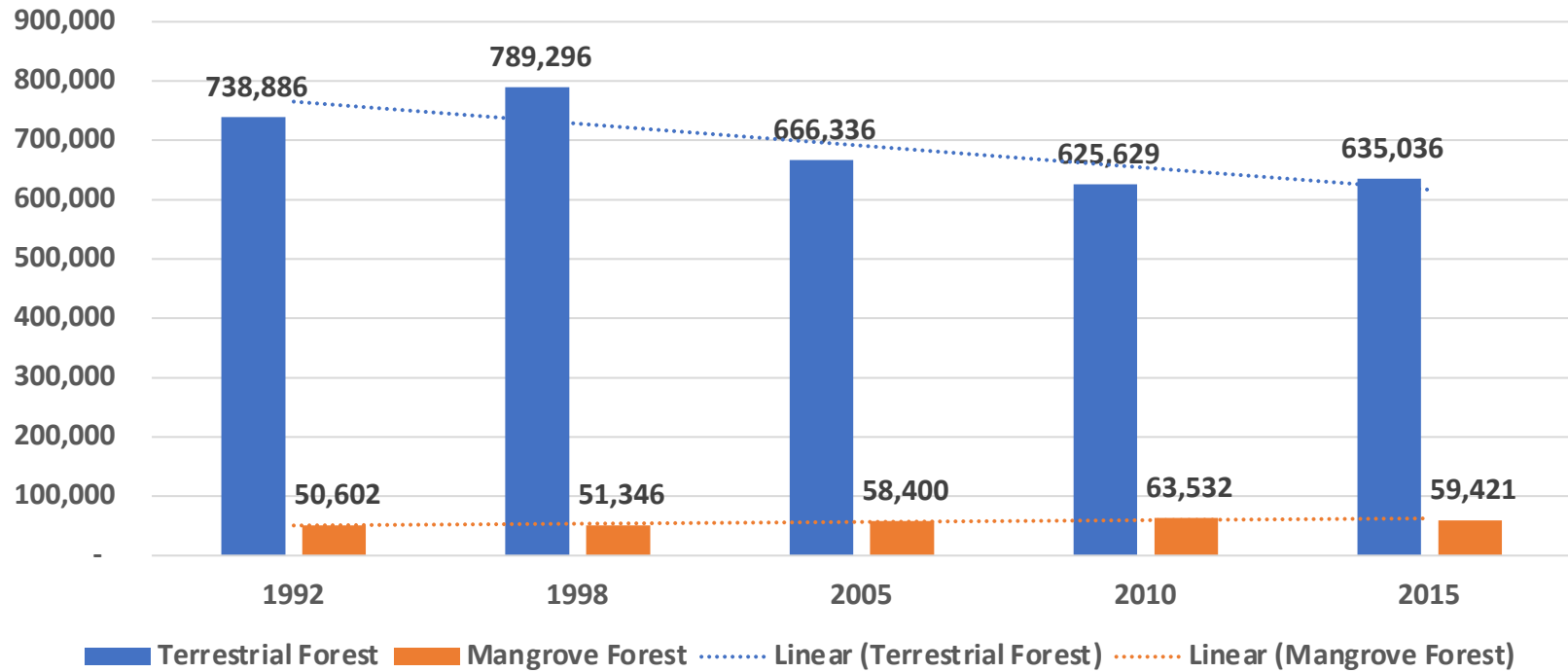
Priority Threats for Forest and Watershed



FOREST SITUATIONER....

Palawan, 1992-2015

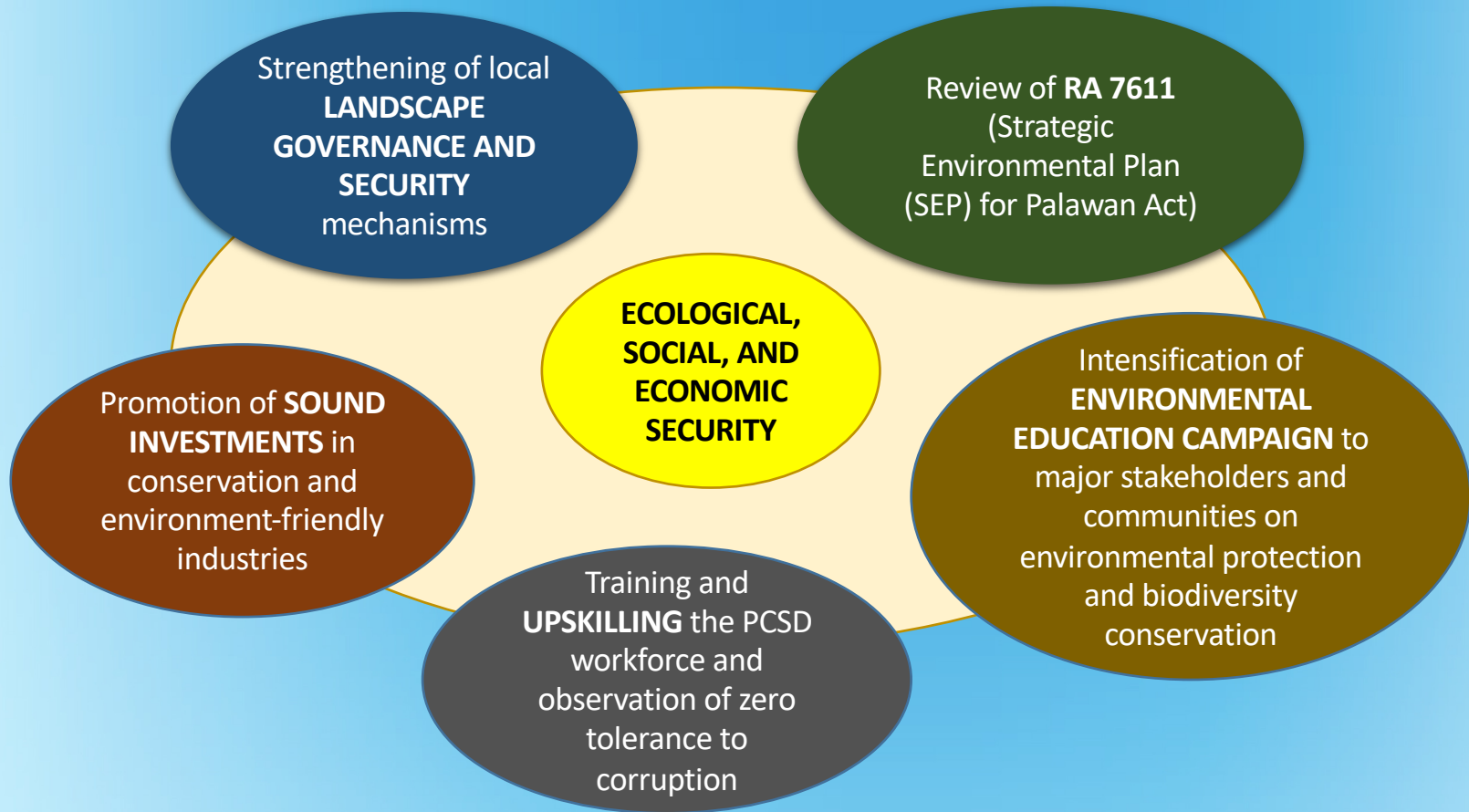
Forest Cover of Palawan Province, 1992-2015



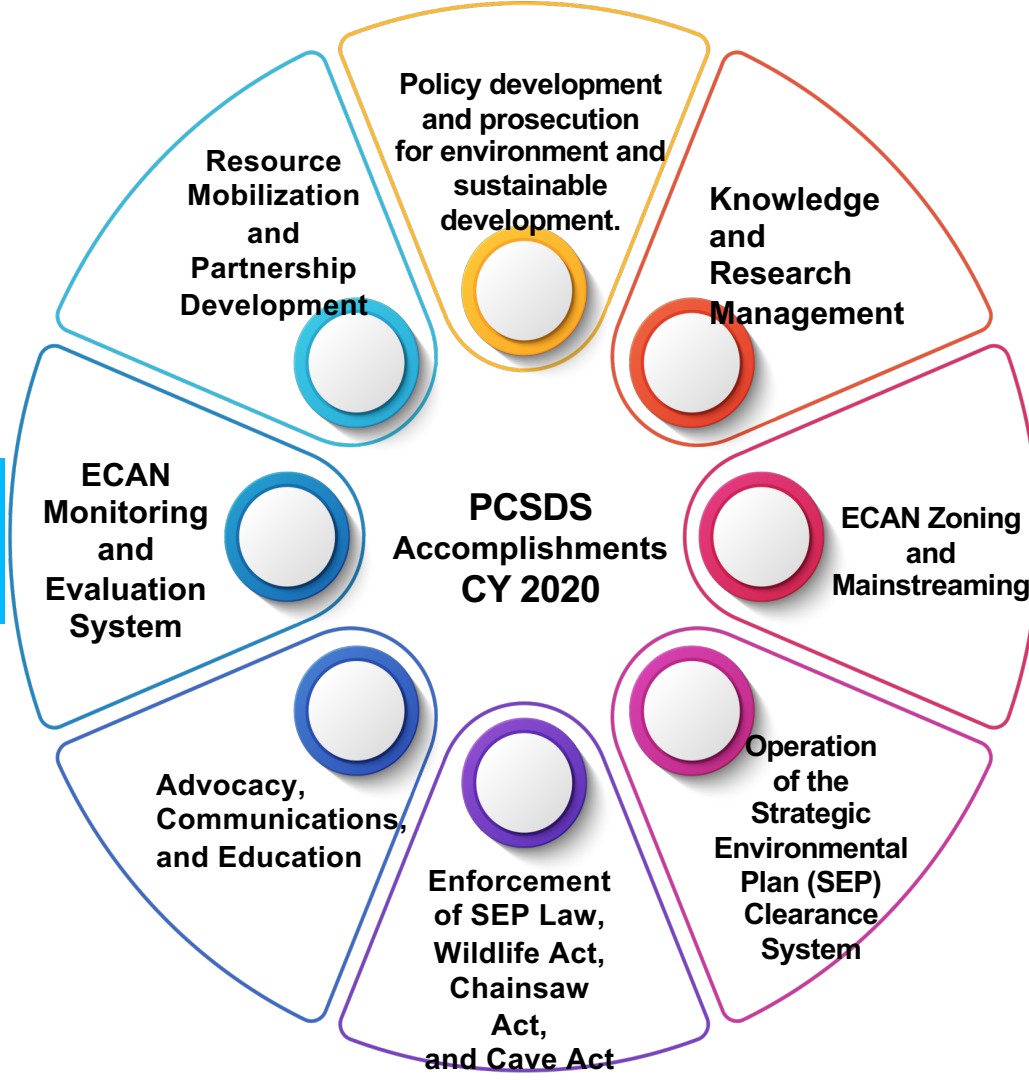
TERRESTRIAL FOREST LOST 103,850 HA (4,515.22 HA/YEAR)

MANGROVE FOREST GAIN 8,819 HA (383.43 HA/YEAR)

2016-2024 THRUST AND PRIORITIES



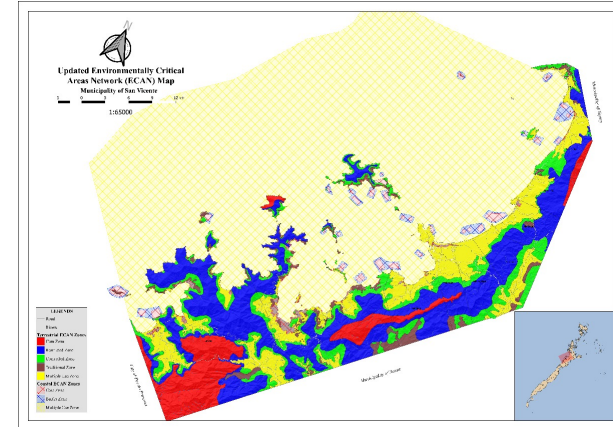
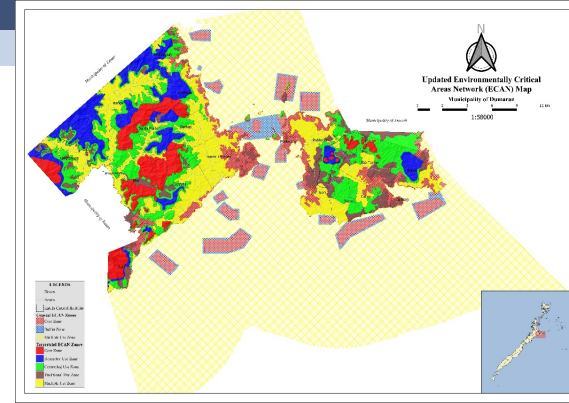
8 KEY AREAS



SYSTEMS AND NETWORKS

ECAN ZONING

- **Protecting core zones and sustainably managing buffer and multiple use zones**
 - **Updating of ECAN maps as basis for local land use of 2 municipalities (Dumaran and San Vicente)**
 - **Tribal Ancestral Zones (TAZ) Management Planning**
- **Mainstreaming and institutionalization of the ECAN system and standards into the public sector and local planning system**



RULE SETTING AND GOVERNANCE

POLICIES, GUIDELINES, MANAGEMENT PLANS, LAW ENFORCEMENT

- *Developing policies for environment and sustainable development*
- *PCSD Approval of Solid Waste Management Plans*
- *Environmental Law Enforcement*

61

PCSD
Resolutions
passed

1

Policy on
ICCA
developed

15

Wildlife Traffic
Monitoring
Units
operational

27

Wildlife
confiscations
conducted

1

Ecological
Solid Waste
Management
Plans (ESWMP)
approved

108

SEP
clearances
issued

29

Chainsaw
units
confiscated

BEHAVIOUR CHANGE



ENVIRONMENTAL EDUCATION AND EXTENSION

19

information,
education and
communication (IEC)
campaigns conducted

1

Youth Sustainability
Virtual Camp
organized

5

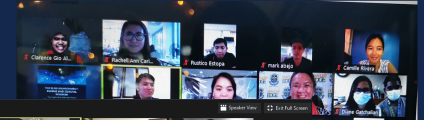
Training/ Workshops
for stakeholders
organized

283

Articles/ news
published in PCSD
website and Facebook
page



THE BLUE ENVIRONMENT:
MARINE AND COASTAL WEBINAR
NOVEMBER 25-26, 2020



2020
YOUTH
SUSTAINABILITY
LEADERSHIP
VIRTUAL
CAMP

TEACHER'S TRAINING
FOR WILDLIFE CONSERVATION



KNOWLEDGE GENERATION AND MANAGEMENT

RESEARCH AND INNOVATION

3

Policy
papers
developed
for the
PCSD

1

"Our
Palawan"
Scientific
Journal for
publication

2

Population
studies of
threatened
species
conducted

1

Web-based
permitting
system
implemented
thru BRAIN



Policy for Establishing Landscape/Seascape-Based Payments for Ecosystem (PES) Systems in Palawan

Palawan is endowed with highly diverse ecosystems across its major seascape-landscapes



Palawan Ecosystems and Goods & Services

- Natural Forests (2012)
- Important watersheds
- Marine coastal areas and fishing grounds
- Unique natural and cultural attractions

Economic activities

- Crops (irrigated and non-irrigated)
- Fishing
- Ecotourism
- Mining



Definition of PES

A voluntary transaction for a well-defined environmental service purchased by at least one environmental service buyer from at least one environmental service provider, if and only if the environmental service provider meets the conditions of the contract and secures and environmental service provision (United Nations, 2009)

PES Operational Principles

- User's Pay Principle
- Damages Pay Principle or Polluter's Pay Principle
- Users and Polluters Pay Principle
- Providers Get Principle
- Effective and efficient regulatory governance and fund management systems.



BRAIN SYSTEM
Biodiversity Resource Access
and Information Network
System

<http://pcsdbrain.com/>



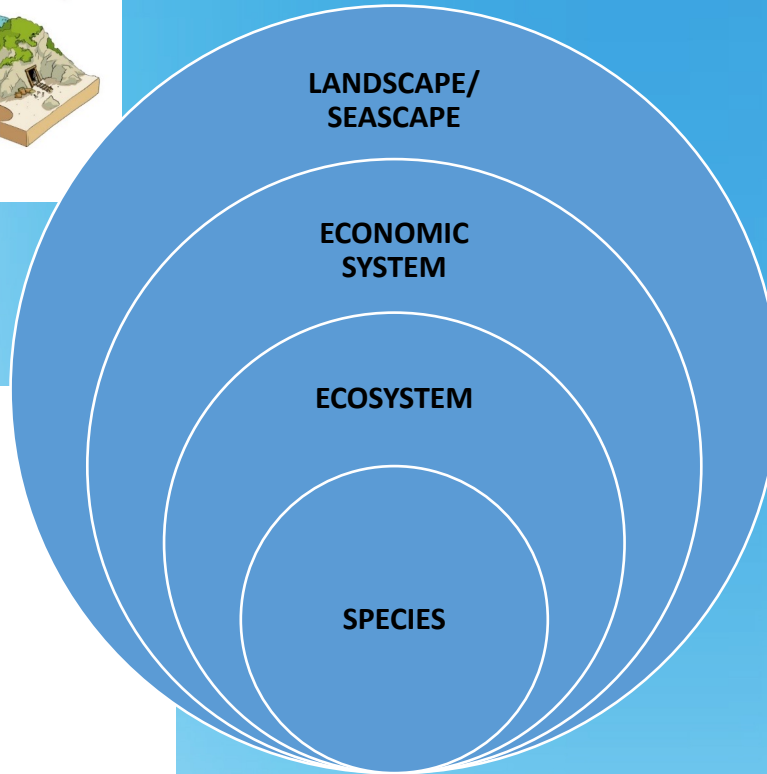
PARTNER ENGAGEMENT AND RESOURCE MOBILIZATION

PALAWAN KNOWLEDGE PLATFORM AND INSTITUTIONAL/PROJECT LINKAGING

- **Forged and maintained partnerships with the various institutions/agencies including the following:**
 - **USAID (Safe Water, Protect Wildlife, FishRights Philippines Sustainable Interventions for Biodiversity, Oceans, and Landscapes [SIBOL**
 - **UNDP (SMARTSEAS);**
 - **JCI Puerto Princesa Peacock;**
 - **Southeast Asian Biosphere Reserve Network;**
 - **PCSD Scientific Advisory Panel; and**
 - **Forest Foundation Philippines (FFP).**



FROM SPECIES TO LANDSCAPE/SEASCAPE



INNOVATIONS

- LANDSCAPE GOVERNANCE
- MARINE PROTECTED AREA OPTIMIZATION DESIGN MODELLING
- SYSTEMS ANALYSIS
- ECOSYSTEMS ACCOUNTING FOR DECISIONS
- BIODIVERSITY FRIENDLY ENTERPRISES
- ENVIRONMENTAL PERFORMANCE RATING
- TECHNOLOGY FOR ENVIRONMENTAL ASSESSMENT AND MONITORING

RECOVERY

**SELF-
SUFFICIENCY**

RESILIENCY



Republic of the Philippines
Palawan Council for
Sustainable Development Staff
Republic Act No. 7611



FY 2022

PCSDS Plans and Budget Proposal

"Palawan Environmentally Critical Areas
Network (ECAN) Management Program."