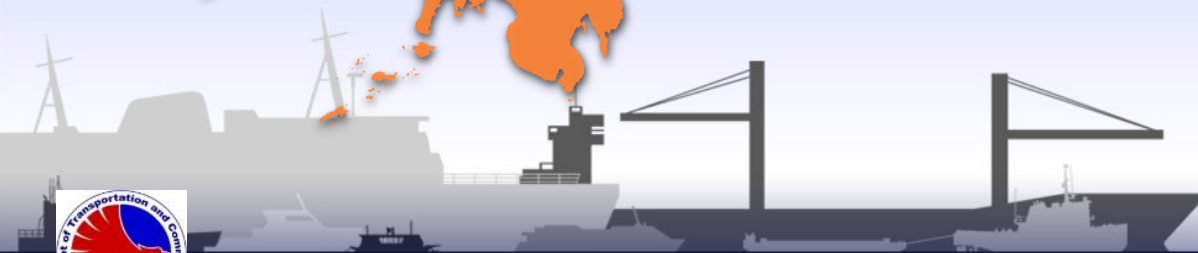




Maritime Industry Authority (MARINA)



MARITIME INDUSTRY AUTHORITY
Regional Office No. IV





WHAT YOU NEED TO KNOW
ABOUT REGISTRATION OF
RECREATIONAL
BOATS IN THE
PHILIPPINES



MEMORANDUM CIRCULAR DS-2019-01

RULES on the REGISTRATION, LICENSING and OPERATION of RECREATIONAL BOATS



OBJECTIVES

- Create Registry of Recreational Boat
- Define Recreational Boats
- Separate from large commercial and industrial vessels
- Create guidelines and documentary requirements for licensing recreational boats for Commercial Tourism



OBJECTIVES

- Ensure proper documentation over a recreational boat either for commercial use or private use within Philippine waters
- Enhance and strengthen the implementation and monitoring capabilities over recreational boats



COVERAGE

Recreational boats for:

1. **Exclusive for Private use**
2. **Commercial tourism**

Any native vessel with outriggers and generally referred to as a bangka/paraw/basing/ or any other vessel of this type cannot be included in this registry.



SALIENT POINTS



WHO QUALIFIES TO OWN A RECREATIONAL BOAT?

Exclusively for Private Use:

- a. Citizen of the Philippines
- b. Foreign nationals
- c. Foreign-owned Domestic Company
- d. Foreign Corporations



WHO QUALIFIES TO OWN A RECREATIONAL BOAT?

For Commercial Use:

- a. Citizen of the Philippines
- b. Domestic partnership OR associations wholly owned by the citizens of the Philippines
- c. Corporation
 - Organized under the laws of the Philippines of which at least sixty percent (60%) of the capital stock is owned and held by citizens of the Philippines



WHAT IS A RECREATIONAL BOAT?

- ❖ a vessel of up to 150.9 ft/46m or less,
- ❖ with a capacity of up to 10 tons of cargo
- ❖ used exclusively for recreational or tourism development purposes
- ❖ either for private or for commercial



DEFINITION OF TERMS

Commercial use

- ❖ offers services, for a fee, to any person, persons or entity for hire or charter for that person's or entity's use

Private use

- ❖ use by the owner or his/her guests for sports and pleasure/recreation purposes without any fee or any other form of consideration

Authority to operate

- ❖ document issued granting permit to operate for tourism or commercial purposes within Philippine waters



WHAT are the CERTIFICATES, PERMITS AND/OR DOCUMENTS issued to a RECREATIONAL BOAT and their RESPECTIVE VALIDITY?

TYPES OF CERTIFICATES/DOCUMENTS	VALIDITY	PRIVATE USE	COMMERCIAL USE
1. Certificate of Ownership (CO)	None	✓	✓
2. Recreational Boat Certificate (RBC)	Five (5) years	✓	✓
3. Recreational Boat Safety Certificate (RBSC)	One (1) year		✓
4. Minimum Safe Manning Certificate (MSMC)	One (1) year		✓
5. Permit To Operate (PTO)	One (1) year		✓



GENERAL TYPES OF RECREATIONAL BOATS

Type	Description
1. Personal Water Craft	Water scooter
2. Canoe Kayak Sail	Small, lightweight, manually powered with up to 8 rowers
3. Dinghy	Small, sail or motor or manually powered
4. Auxiliary	Carried aboard another vessel
5. Dragon Boat Galley	Large, manually powered with more than 8 rowers
6. Day Sailboat	Sailed-powered without overnight accommodation





Canoe kayak rowboat



Dinghy



Personal water scooter (jet ski)



Day sailboat



Dragon boat



GENERAL TYPES OF RECREATIONAL BOATS

Type	Description
7. Sailboat	Sail-powered > 20ft with overnight accommodation
8. Motorsailer	Powered equally by motor or sail
9. Motor Launch	Motor vessel without overnight accommodation
10. Motor Boat / Cabin Cruiser	Motor vessel < 32ft with overnight accommodation
11. Speed Boat	Motor vessel capable of over 20 knots with or without accommodation
12. Motor yacht	Motor vessel > 32ft and < 90ft with overnight accommodation



Cabin Cruiser



Speed boat



Motor yacht



Motor Launch



Sailboat (with overnight accommodation)



GENERAL TYPES OF RECREATIONAL BOATS

Type	Description
13. Mega yacht	Sail or motor powered vessel 90ft to < 150ft
14. Superyacht	Sail or motor powered vessel 150ft or <
15. Hydrofoil	High speed vessel, equipped with foils capable of lifting the entire hull from the water
16. Pontoon Boat	With multiple cylindrical hulls arranged lengthwise
17. Raft or Floating Bar	Unenclosed floating platform, limited mobility, manually driven





Mega yacht



Super yacht



Hydrofoil



Pontoon boat



Floating bar



GENERAL TYPES OF RECREATIONAL BOATS

Type	Description
18. Houseboat	Accommodation vessel with freeboard and shallow draft, designed for calm waters
19. Submersible	Designed to completely submerge and resurface
20. Aircushion or ground effect vessel	Has sufficient buoyancy to float on the water at rest, but travels on a cushion of air either generated by fans or by foils and forward motion
21. Miscellaneous vessel	Vessel not fitting into any of the above categories

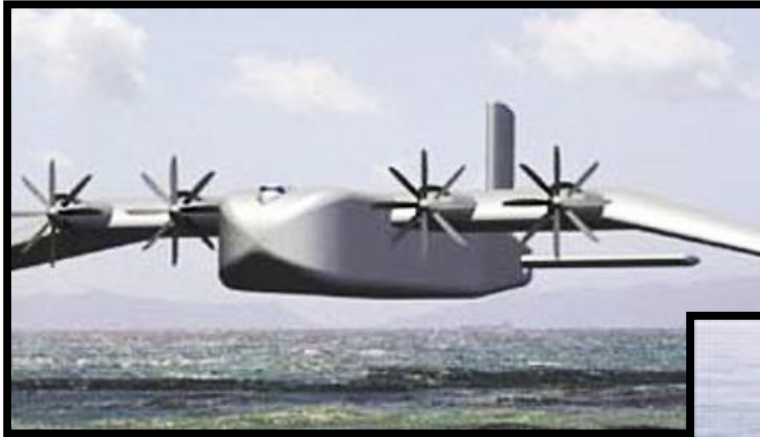




Houseboat



Submersible



Air cushion or ground effect vessel





CLASSIFICATION

(tourism or commercial purposes)

- 1. Class 1 Day Boats** (boats with no overnight facilities)
 - a. Dive Boats
 - b. Tour Boats
 - c. Guest Transfer Boats
 - d. River Boats
 - e. Charter boats
 - f. Special Use Vessels



CLASSIFICATION

(tourism or commercial purposes)

- 2. Class II Multi-Day Boats** (Boats with overnight accommodations for its passengers)
 - a. Live Aboard Dive Boats
 - b. Charter Yachts
 - c. Multi Day Expedition/Research Boats



CLASSIFICATION

(tourism or commercial purposes)

CLASS	RANGE of OPERATION from point of embarkation (Nautical Miles)	CAPACITY (maximum)
Class C	10 (18.52km)	8 passengers 2 crews
Class B	20 (37.04km)	12 passengers 4 crews
Class A	60 (111.12km)	< 50 passengers
Class A1	60 – 120	based on capacity computation or stability computation



REQUIREMENTS

If acquired through Local Construction

- a) Filled out Application Form
- b) Builder's Certificate
- c) Pictures of Bow, Stern, Port, Starboard sides
- d) Sketch of the Boat
- e) Owner's Identification Documents (as applicable)
 - For Filipino : any valid government IDs
 - For Foreign Nationals : Passport (for PRIVATE use only)
 - For Single Proprietorship : DTI Certificate
 - For Filipino Corporation : Copy of Incorporation
 - For Foreign Companies : Certificate of Registration or Incorporation (for PRIVATE use only)
 - For Cooperatives : Certificate of Accreditation with the Articles of Cooperation and By-Laws
- f) Payment of corresponding fees



REQUIREMENTS

If acquired through Importation

- a) Filled out Application Form
- b) Proof of Tax Payment
- c) Builder's Certificate
- d) Pictures of Bow, Stern, Port, Starboard sides
- e) Sketch of the Boat
- f) Owner's Identification Documents (as applicable)
 - For Filipino : any valid government IDs
 - For Foreign Nationals : Passport (for PRIVATE use only)
 - For Single Proprietorship : DTI Certificate
 - For Filipino Corporation : Copy of Incorporation
 - For Foreign Companies : Certificate of Registration or Incorporation (for PRIVATE use only)
 - For Cooperatives : Certificate of Accreditation with the Articles of Cooperation and By-Laws
- g) Payment of corresponding fees



REQUIREMENTS

If previously registered boats with MARINA

- a) Filled out Application Form
- b) Certificate authorizing Transfer to Private Boat Registry
- c) Pictures of Bow, Stern, Port, Starboard sides
- d) Registration Documents
- e) Owner's Identification Documents (as applicable)
 - For Filipino : any valid government IDs
 - For Foreign Nationals : Passport (for PRIVATE use only)
 - For Single Proprietorship : DTI Certificate
 - For Filipino Corporation : Copy of Incorporation
 - For Foreign Companies : Certificate of Registration or Incorporation (for PRIVATE use only)
 - For Cooperatives : Certificate of Accreditation with the Articles of Cooperation and By-Laws
- f) Payment of corresponding fees



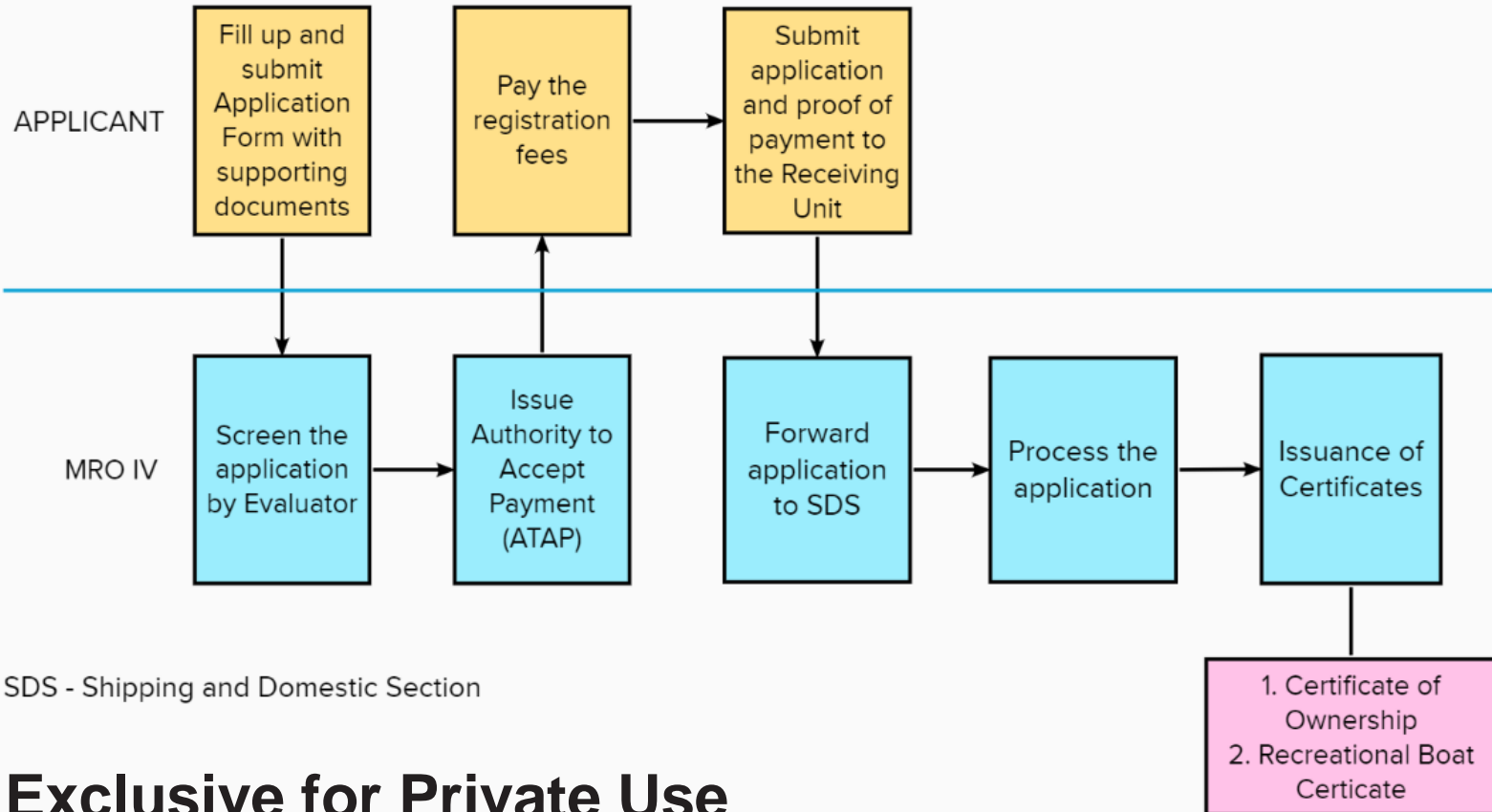
REQUIREMENTS

If Under Amnesty Program

- a) Filled out Application Form
- b) Proof of Ownership (either one of the following):
 - Affidavit of Ownership
 - Proof of Purchase
 - Sales Contract
- c) Pictures of Bow, Stern, Port, Starboard sides
- d) Builder's Certificate
- e) Sketch of the Boat
- f) Owner's Identification Documents (as applicable)
 - For Filipino : any valid government IDs
 - For Foreign Nationals : Passport (for PRIVATE use only)
 - For Single Proprietorship : DTI Certificate
 - For Filipino Corporation : Copy of Incorporation
 - For Foreign Companies : Certificate of Registration or Incorporation (for PRIVATE use only)
 - For Cooperatives : Certificate of Accreditation with the Articles of Cooperation and By-Laws
- g) Payment of corresponding fees



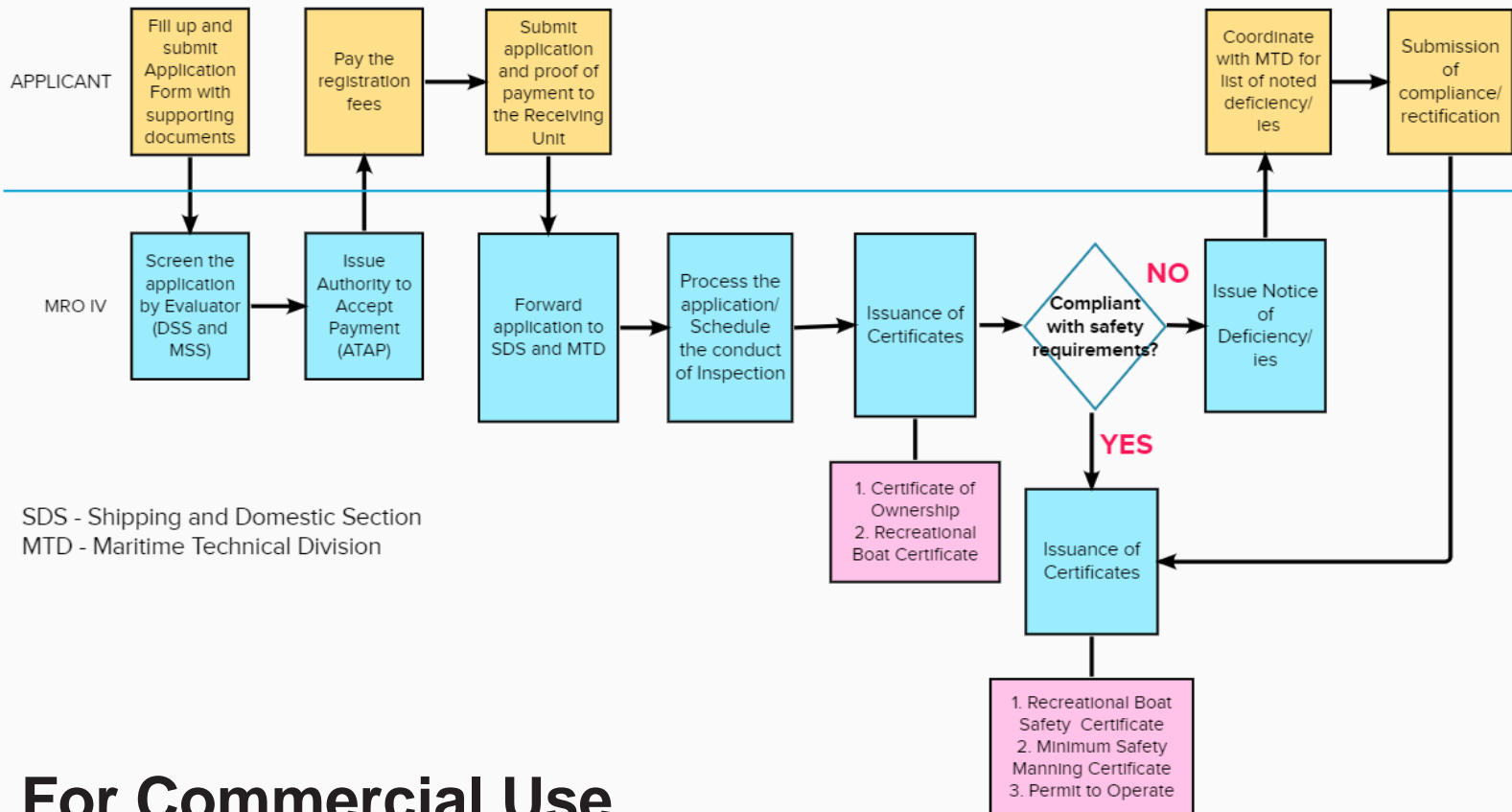
PROCESS FLOW



Exclusive for Private Use



PROCESS FLOW

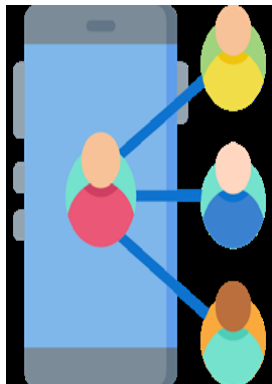


For Commercial Use



POLICY REFERENCES:

- **MARINA Memorandum Circular Number DS-2019-01**
- **MARINA Memorandum Circular Number No.120**



MARINA DIGITAL MEDIA ACCOUNTS:

FACEBOOK - @DOTrMARINAPH

TWITTER - @DOTrMARINAPH

INSTAGRAM - @DOTrMARINAPH

YOUTUBE – Maritime Industry Authority

WEBSITE - <https://marina.gov.ph>



Thank You!