



# UPDATES ON FORESTRY:

*Luzon-Visayas Cluster*



## CONTENT

- Forestry Statistics
- Forestry Programs
- Ways Forward



## Land Classification



**30 MILLION  
HECTARES**

**official total land area** of the Philippines that is legally classified as forestland and alienable & disposable land



**FORESTLAND  
15.8 M ha (52.7%)**

Includes public forest, permanent forest or forest reserves, and forest reservations.



**ALIENABLE & DISPOSABLE LAND  
14.2 M ha (47.3%)**

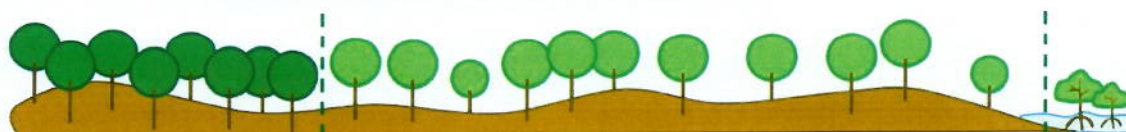
Land of the public domain, which has been classified declared as such and available for disposition

## 2020 Forest Cover



**7,226,394 HECTARES**

**estimated forest cover of the Philippines**



**30.7% (2,221,173 ha)  
Closed Forest**

**65.0% (4,693,821 ha)  
Open Forest**

**4.3% (311,400 ha)  
Mangrove Forest**

**CLOSED FOREST:** Formation where trees in various storey and undergrowth cover a high proportion (>40 percent) of the ground and do not have a continuous dense grass layer.

**OPEN FOREST:** Formations with discontinuous tree layer with coverage of at least 10% and less than 40%.

**MANGROVE FOREST:** Forested wetland growing along tidal mudflats and along shallow water coastal areas extending inland along rivers, streams and their tributaries where the water is generally brackish and composed mainly of *bakauan*, *api-api*, *pototan*, *tangal*, etc.

## Forest Tenorial Instruments (as of June 2022)

*Luzon and Visayas*

Forest Tenorial Instruments are used by the government to allocate public forests and forest lands to interested individuals, organizations or entities and put these areas into effective and responsible onsite management.

Total Tenorial Instruments : 2,885  
Total Area Coverage : 1,089,732 ha



## NATIONAL FORESTRY PROGRAMS

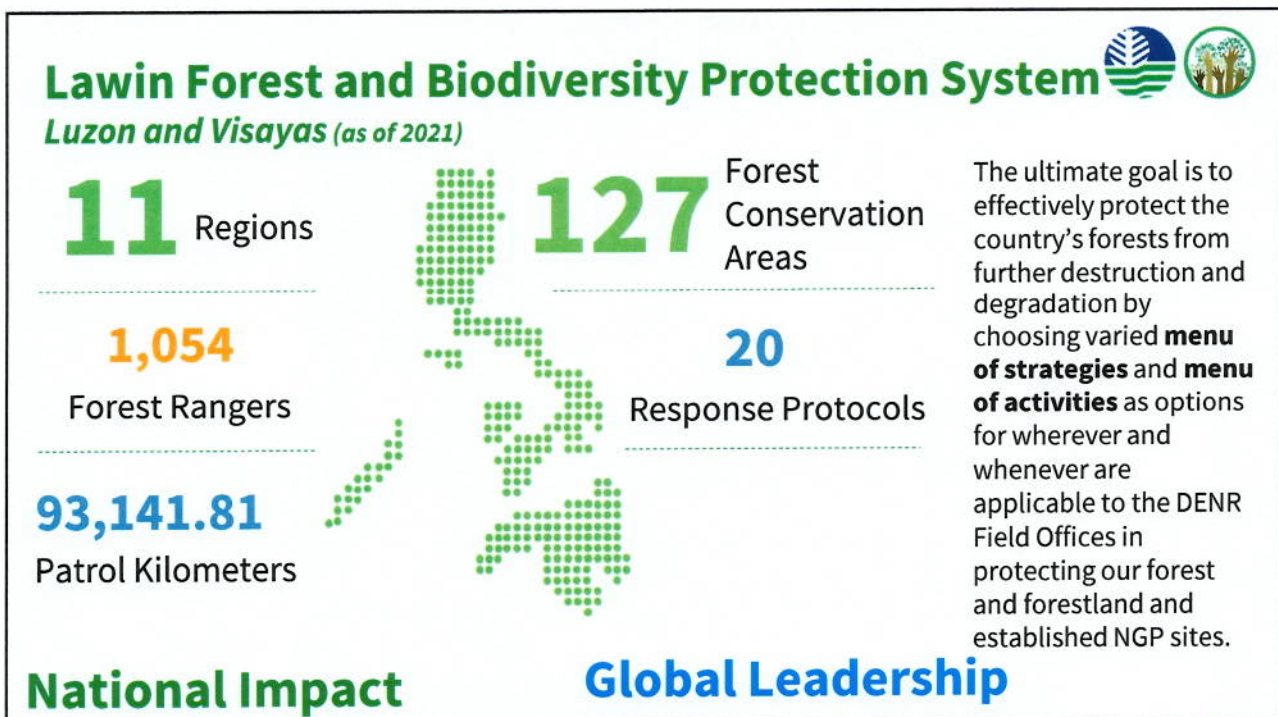
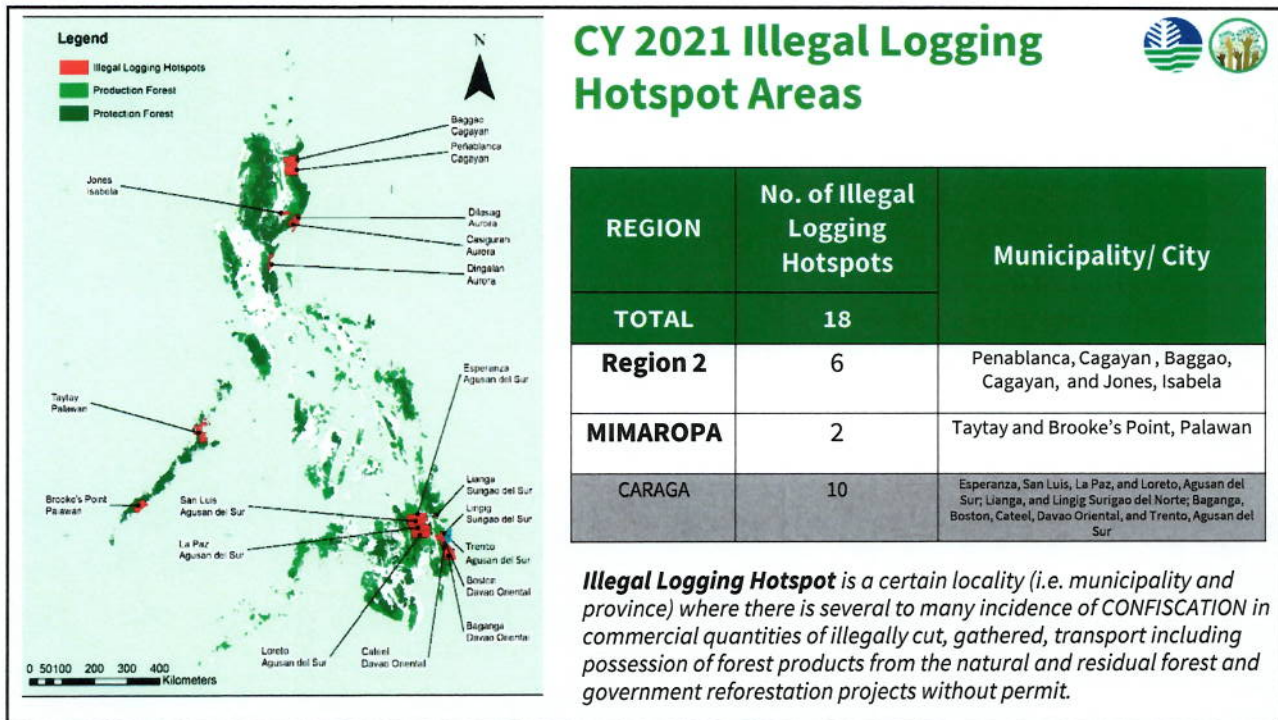


### NGP Accomplishment (2011-2021)

Region	Area Planted (ha)	Seedlings Produced (no.)	Partners/ Beneficiaries (no.)	Extension Officers/ Tech Staff (no.)
<b>TOTAL</b>	<b>1,170,341</b>	<b>901,269,076</b>	<b>16,390</b>	<b>10,059</b>
CAR	116,361	91,779,193	3,184	1,177
NCR	2,850	896,012	-	53
1	89,934	79,133,108	1,217	798
2	104,582	89,109,999	1,778	957
3	114,830	76,615,603	1,294	976
CALABARZON	118,046	94,552,428	703	807
MIMAROPA	126,295	102,186,995	2,218	1,140
5	132,094	79,573,535	668	955
6	105,178	76,379,362	1,806	1,024
7	119,779	110,051,258	1,626	993
8	140,392	100,991,583	1,896	1,179

### FY 2023 ENGP Activities Luzon and Visayas (Per NEP)

Activities	Target	Budget ('000)	Activities	Target	Budget ('000)
Plantation Establishment (ha)	7,921	51,491	Hiring of Personnel for the Assessment/Inventory of Sites (no.)		
Seedling Production (no.)	2,722,907	54,724	Forest Extension Officer	158	38,709
Maintenance and Protection (ha)	96,863	555,817	Financial Analyst	64	15,680
1 <sup>st</sup> Year	7,921	23,763	Data Management Officer	158	38,709
2 <sup>nd</sup> Year	31,112	185,065	Maintenance of MMFN (no.)	8	15,000
3 <sup>rd</sup> Year	57,830	346,989	Improvement/Estab of DENR nurseries (no.)	107	20,700
Site Assessment (ha)	38,151	20,989	Procurement of Vehicle (No.)	54	113,400
Hiring of FEOs/Technical Staff (no)	644	157,718			
Assessment/Inventory of Graduated Sites (ha)	45,226	90,453			



### LAWIN Accomplishment

Region	Patrol Distance (km)	Forest Patrollers	Observed Threats	Threats Requiring Responses	Addressed Threats Requiring Post-Patrol Response
<b>TOTAL</b>	<b>93,141.81</b>	<b>1,054</b>	<b>4,930</b>	<b>2,915</b>	<b>2,577</b>
CAR	11,349.27	121	490	270	270
NCR	1,314.73	9	10	5	0
1	12,266.75	91	246	146	146
2	15,711.39	66	474	445	209
3	6,725.54	96	119	77	57
CALABARZON	8,643.10	163	198	92	87
MIMAROPA	9,417.89	125	1,544	638	632
5	9,225.85	68	221	150	150
6	5,900.58	118	238	128	125
7	5,681.01	129	344	167	120
8	6,905.70	68	1,046	797	781



# WAYS FORWARD





## The President's Directives

- "There is no question that the **preservation of the environment is the preservation of life**. If we **cannot mitigate climate change**, all our plans for the economy, all our plans for **our future will be for naught**."

- "We will also **look into the precarious fresh water supply situation** in the country, especially in our urban areas. Many of our water supply systems date back to the 1950s, and **they must now be rehabilitated and improved**."

## Priority Thrusts and Directions



### *Legislative Agenda:*

#### ► **Sustainable Forest Management Bill**

Institutionalize the development of an effective and sustainable forest management strategy and highlights sustainability, ecological integrity and participatory development.

#### ► **Final Forest Limits Bill**

Defining the specific limits of forestlands for the conservation, protection and development of the country's forest resources

## Priority Thrusts and Directions



### ► Increase Forest Cover

- Updating of the Forest Land Boundary Delineation in identified “problematic” areas/provinces
- Delineation of production areas for potential investment areas
- Use of technology in forest protection activities – limitation of foot patrol

### ► Adopt climate risk lens in national planning and policies

- Valuing of ecosystem services (natural capital accounting)



**THANK YOU  
VERY MUCH!**



Email: [fmb@denr.gov.ph](mailto:fmb@denr.gov.ph)  
[@denrfmbofficial](#)

