

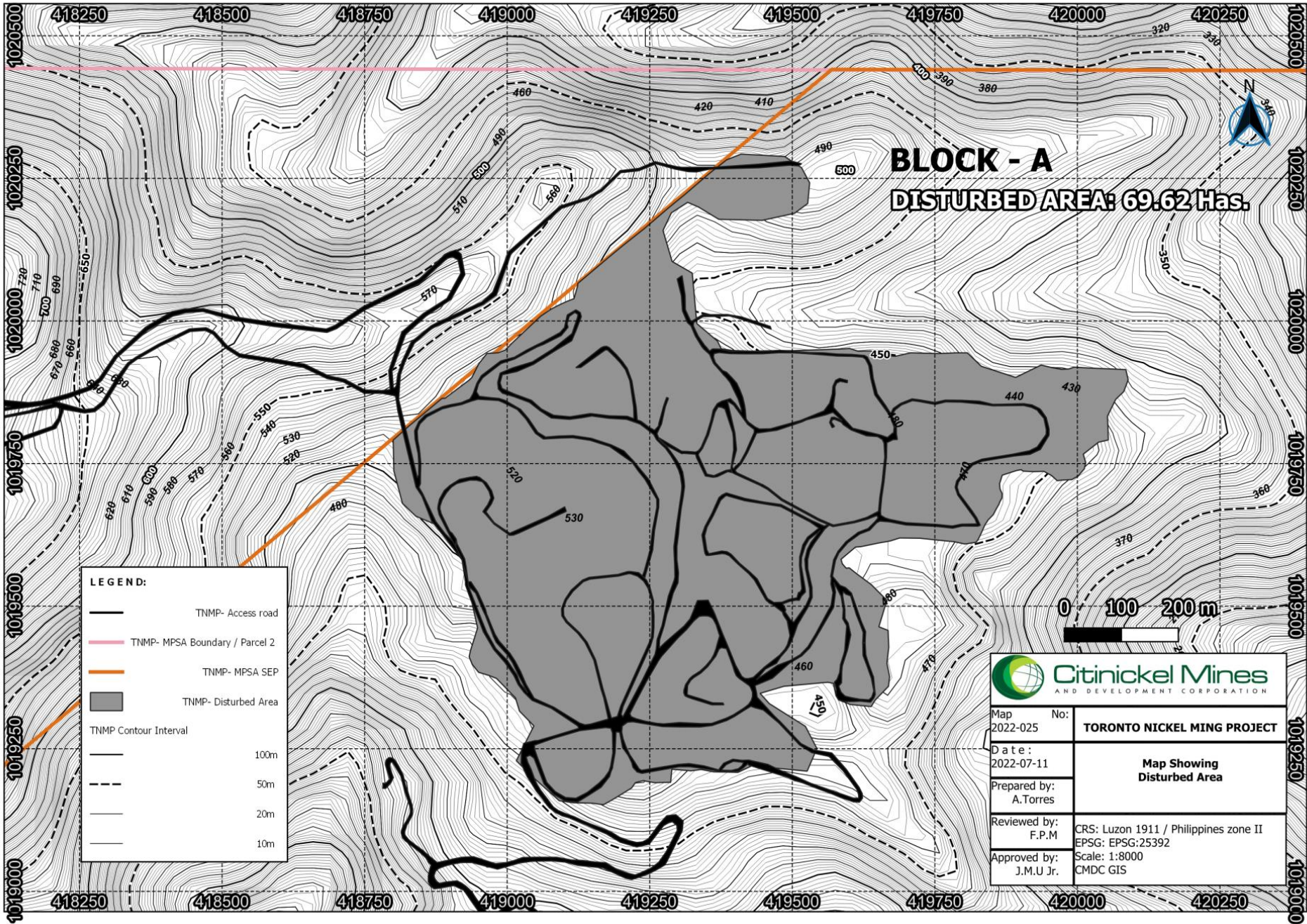
# Mined-out Rehabilitation & Temporary Re-vegetation Status Update (2ndQ2022)

**October 6, 2022 | MRFC Meeting**  
Citinickel Mines and Development Corporation –  
Toronto Nickel Mining Project





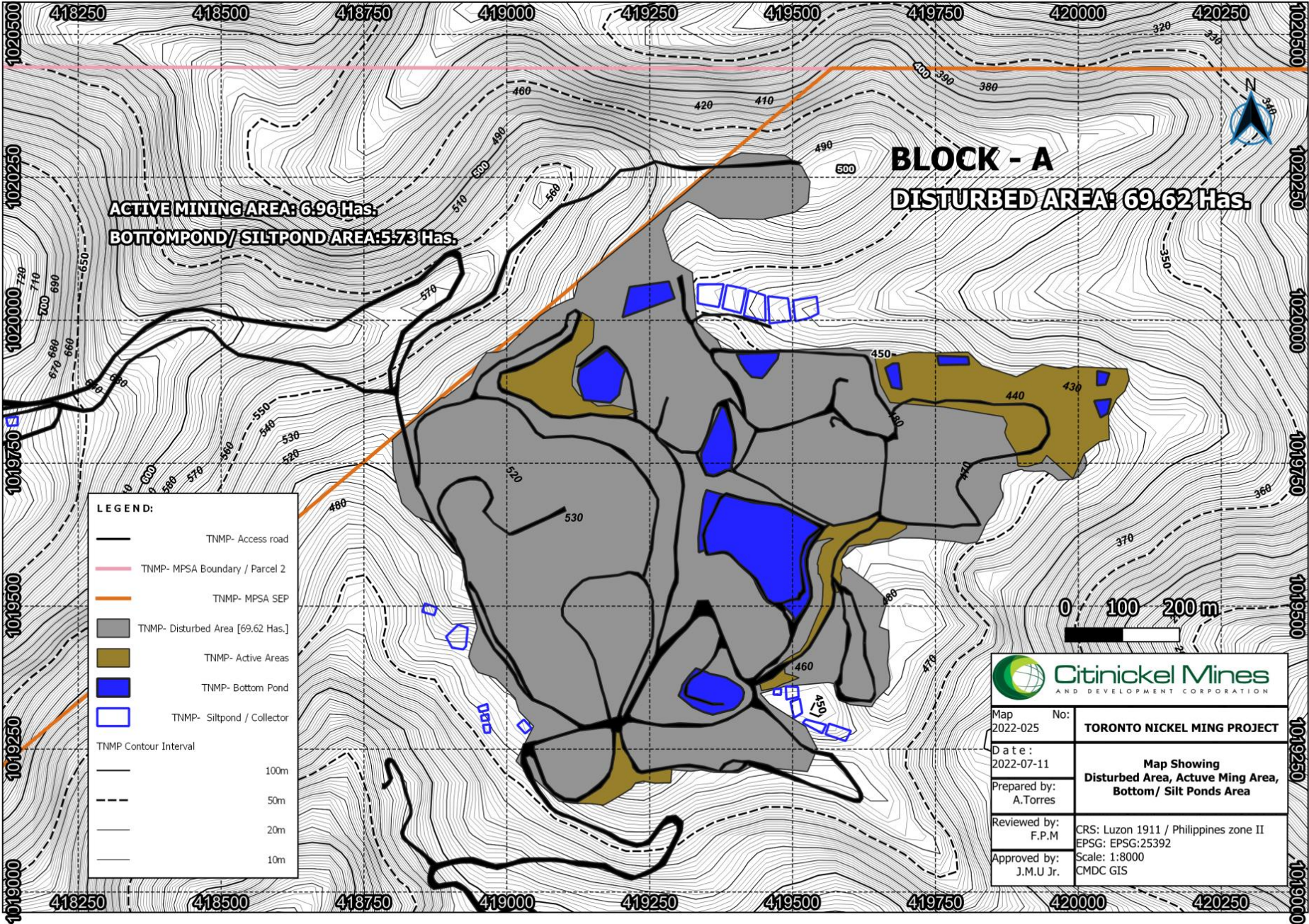
# DISTURBED AREA







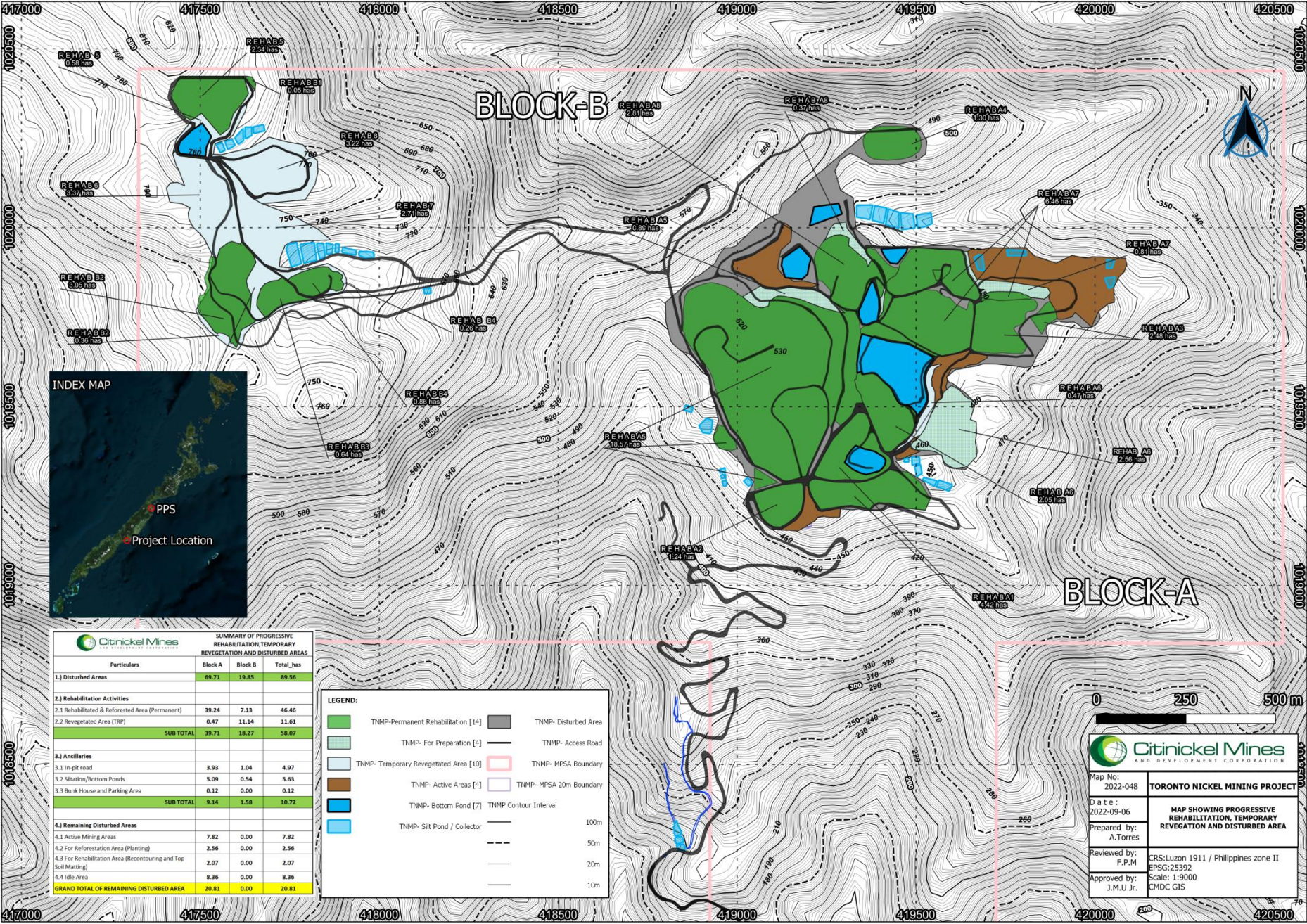
# ANCILLARIES (In-pit Roads, Bottom Ponds)







# Mine Rehabilitation Areas







# DAO 2018-19

Section 5, Article d., item i.

## d. Maximum Disturbed Area for Nickel Mines

- i. The maximum disturbed area for extraction of ore at any one time shall be dependent on the scale of mining operations, as follows:

Scale of Mining Operation (WMT/Year)	Maximum Disturbed Area
a. 1 Million or less	50 hectares
b. More than 1 Million but less than 3 Million	60 hectares
c. 3 Million but less than 5 Million	70 hectares
d. 5 Million but less than 7 Million	80 hectares
e. 7 Million but less than 9 Million	90 hectares
f. 9 Million and up	100 hectares

For projects that have a processing plant or those with long term supply agreement with domestic processing plant, the maximum disturbed area for extraction shall be one hundred sixty-two (162) hectares or two (2) meridional blocks.

Areas utilized for ancillary facilities, such as settling ponds, stock yards, sumps, motorpools, administrative offices, and other similar facilities, shall not be included in the above maximum disturbed area limit; and





Particular	TNMP, Ha.	PNMP, Ha.
MPSA	768	1,408
Total Disturbed Areas	89.56	104.11
Undisturbed Areas	678.44	1,303.89
<b>% of Disturbed areas</b>	<b>11.66%</b>	<b>7.39%</b>

Particulars	CMD-C-TNMP			CMD-C-PNMP				TOTAL, has
	Block A	Block B	Subtotal, has	Block A	Block B	Block C	Subtotal, has	
1.) Disturbed Areas	69.71	19.85	89.56	31.32	18.73	54.06	104.11	193.67
2.) Rehabilitation Activities								
2.1 Rehabilitated & Reforested Area (Permanent)	39.33	7.13	46.46	21.17	3.42	9.19	33.78	80.24
2.2 Revegetated Area (TRP)	0.47	11.14	11.61	0.00	1.03	3.85	4.88	16.49
SUB TOTAL	39.80	18.27	58.07	21.17	4.45	13.04	38.66	96.73
3.) Ancillaries								
3.1 In-pit road	3.93	1.04	4.97	1.46	1.71	2.38	5.55	10.52
3.2 Siltation/Bottom Ponds	5.09	0.54	5.63	4.04	1.74	8.99	14.77	20.40
3.3 Bunk House and Parking Area	0.12	0.00	0.12				0.00	0.12
3.4 Undisturbed/Forested Area				1.00	6.83	0.61	8.44	8.44
SUB TOTAL	9.14	1.58	10.72	6.50	10.28	11.98	28.76	39.48
4.) Remaining Disturbed Areas								
4.1 Active Mining Areas	7.82	0.00	7.82	0.89	0.27	2.41	3.57	11.39
4.2 For Reforestation Area (Planting	2.56	0.00	2.56	0.00	0.00	1.59	1.59	4.15
4.2 For Rehabilitation Area (Recontouring and Topsoil Matting)	2.07	0.00	2.07	0.38	0.00	14.89	15.27	17.34
4.3 Idle Areas	8.32	0.00	8.32	2.38	3.73	10.15	16.26	24.58
GRAND TOTAL OF REMAINING DISTURBED AREA	20.77	0.00	20.77	3.65	4.00	29.04	36.69	57.46
Maximum Allowable Disturbed Areas based on DAO 2018-19 (2,000,000 DMT Annual Production)								60.0





# Summary of Mine Rehabilitated Areas (as of 2<sup>nd</sup> Quarter 2022)

Year	Area (Name)	Area (has.)	Species Planted
2012, 2019	Block A Rehabilitation 1	4.42	Narra, Agoho, Ipil, Moning, Duguan, Kansilay, Batino, Kawayan-Tinik, Ipil
2012	Block A Rehabilitation 2	1.24	Narra, Agoho, Ipil
2015, 2019, July 2020	Block A Rehabilitation 3	2.48	Agoho, Batino, Maladuhat, Malakatmon, Malapapaya, Kawayan-tinik
2015, 2016, 2017	Block A Rehabilitation 4	1.30	Agoho, Narra, Ipil, Batino
2016, 2017, 2019, 2020, January & September 2021, June 2022	Block A Rehabilitation 5	18.58	Agoho, Apitong-Baboy, Apian, Batino, Bunot-bunot, Butterfly Tree, Ipil, Malabayabas, Maladuhat, Malapapaya, Moning, Narra, Nato, Palomaria, Sandana, Supa, Udling, Fruit Trees (Bayabas, Duhat, Sampalok)
2016, 2017, 2018	Block A Rehabilitation 6	2.05	Agoho, Narra, Ipil, Batino, Mosquito Tree, Udling, Palawan Cherry, Grass
2017, 2018, 2021, 2022	Block A Rehabilitation 7	6.46	Agoho, Batino, Maladuhat, Udling, Palawan Cherry, Fire Tree, Narra, Palomaria, Supa
2019, 2022	Block A Rehabilitation 8	2.81	Agoho, Batino, Kandis, Malapapaya, Mancono, Nato, Sandana, Udling, Kawayan-tinik
SUB-TOTAL		39.33	
2016	Block B Rehabilitation 1	0.05	Agoho, Narra, Grass
2017, 2018	Block B Rehabilitation 2	3.06	Agoho, Udling, Batino, Duguan
2017	Block B Rehabilitation 3	0.81	Agoho
2016	Block B Rehabilitation 4	0.86	<i>Acacia mangium</i> , Agoho, Narra
2016, 2020 (enrichment)	Block B Rehabilitation 5	2.35	<i>Acacia auriculiformis</i> , Moning, Narra, Batino, Udling
SUB TOTAL		7.13	
GRAND TOTAL		46.46	



# BLOCK A MINE REHABILITATION AREA



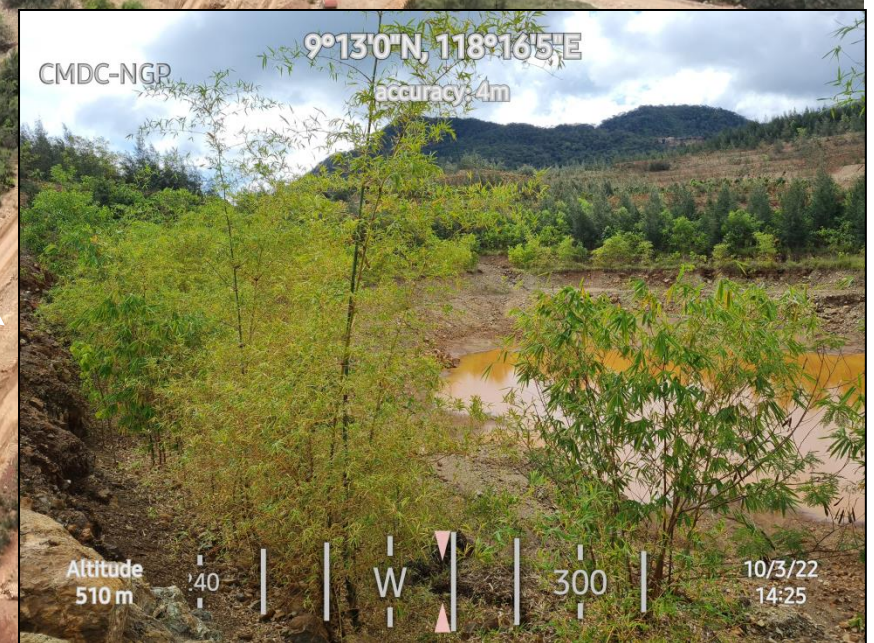


# BLOCK A MINE REHABILITATION AREA



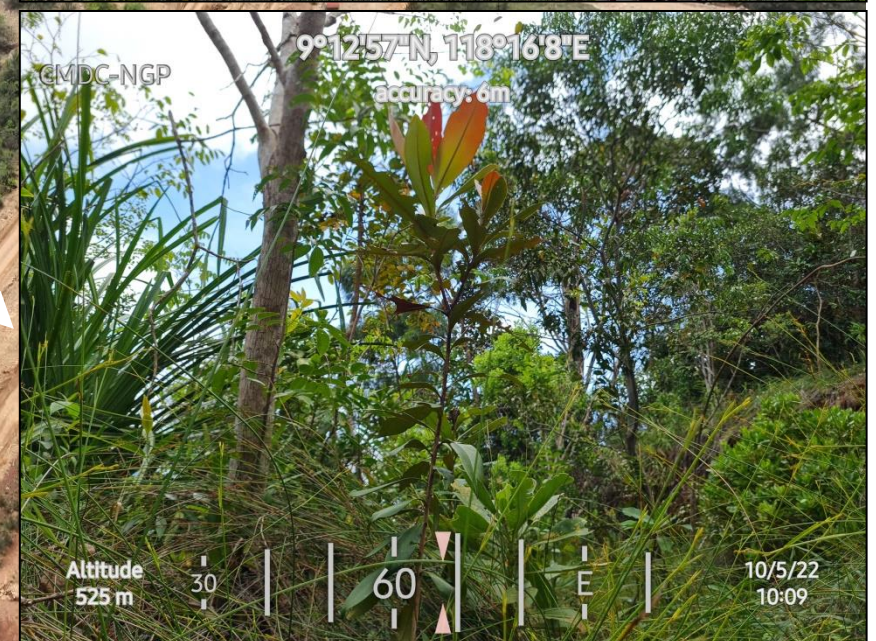
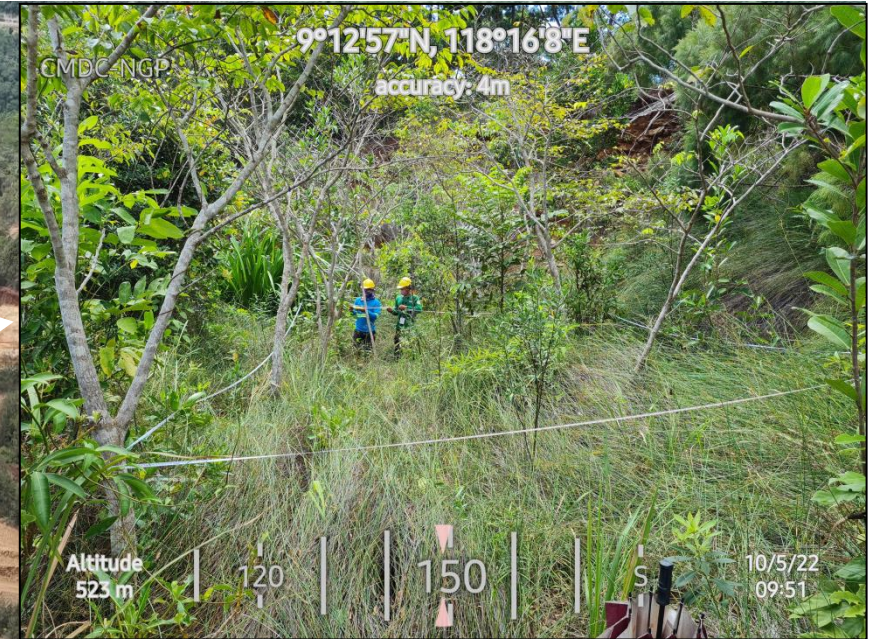


# BLOCK A MINE REHABILITATION AREA



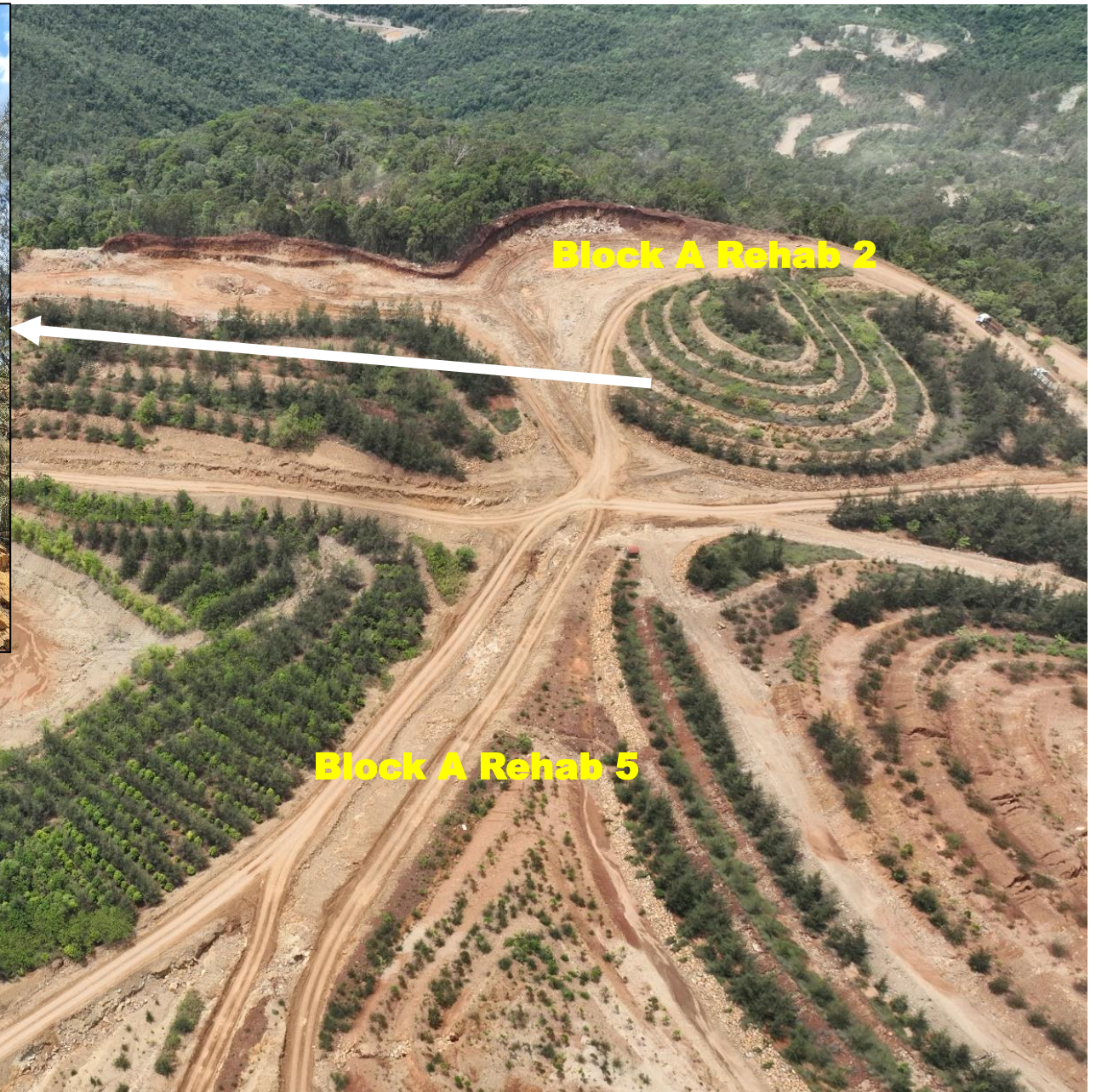


# BLOCK A MINE REHABILITATION AREA





# BLOCK A MINE REHABILITATION AREA





# BLOCK A MINE REHABILITATION AREA





# BLOCK A MINE REHABILITATION AREA





# BLOCK A MINE REHABILITATION AREA





# BLOCK A MINE REHABILITATION AREA





# BLOCK A MINE REHABILITATION AREA









# BLOCK A MINE REHABILITATION AREA





# BLOCK A MINE REHABILITATION AREA





# BLOCK A MINE REHABILITATION AREA



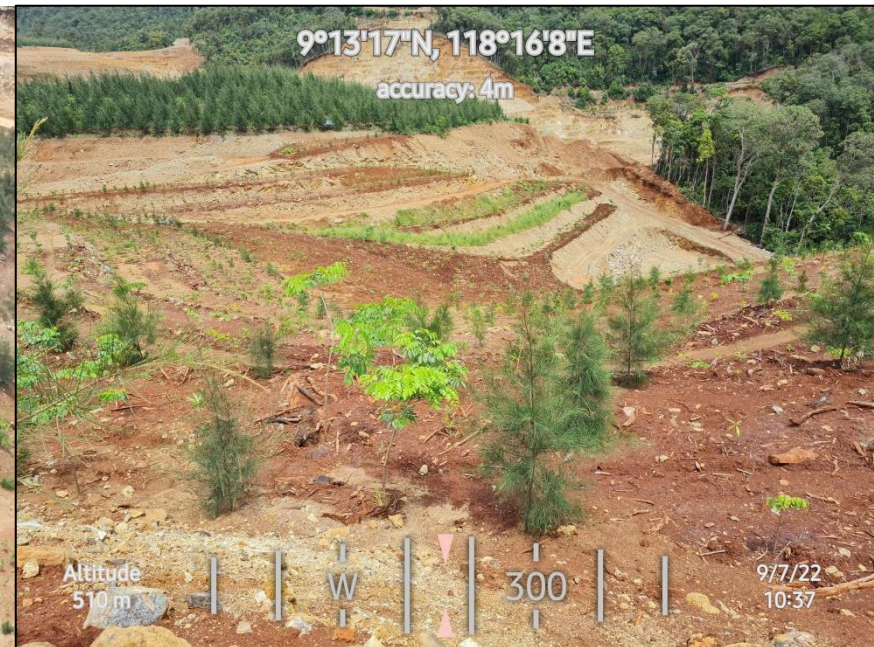


# BLOCK A MINE REHABILITATION AREA





# BLOCK A MINE REHABILITATION AREA



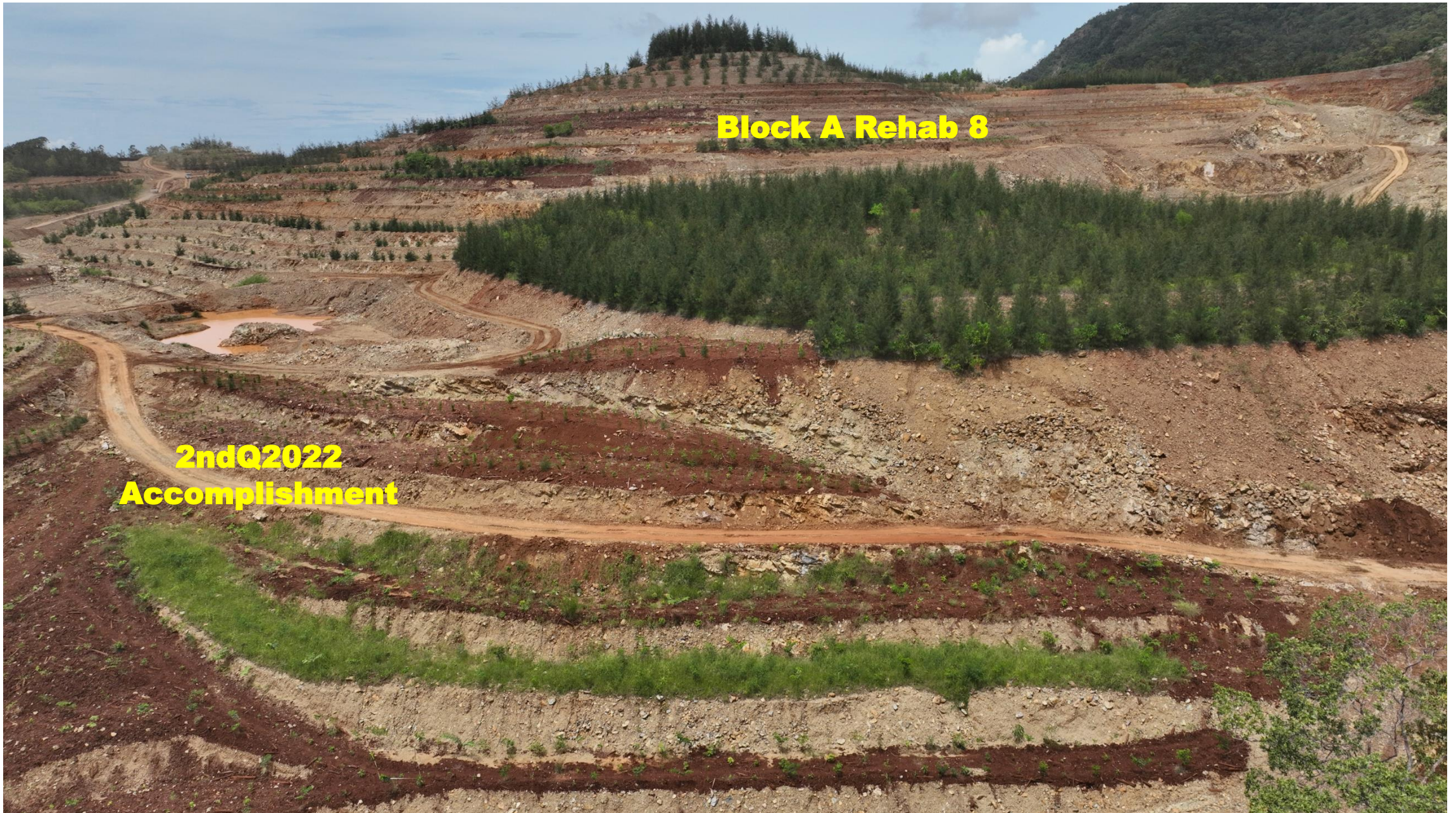


# BLOCK A MINE REHABILITATION AREA





# BLOCK A MINE REHABILITATION AREA



**Block A Rehab 8**

**2ndQ2022  
Accomplishment**



# BLOCK B MINE REHABILITATION AREA





# BLOCK B MINE REHABILITATION AREA





# BLOCK B MINE REHABILITATION AREA



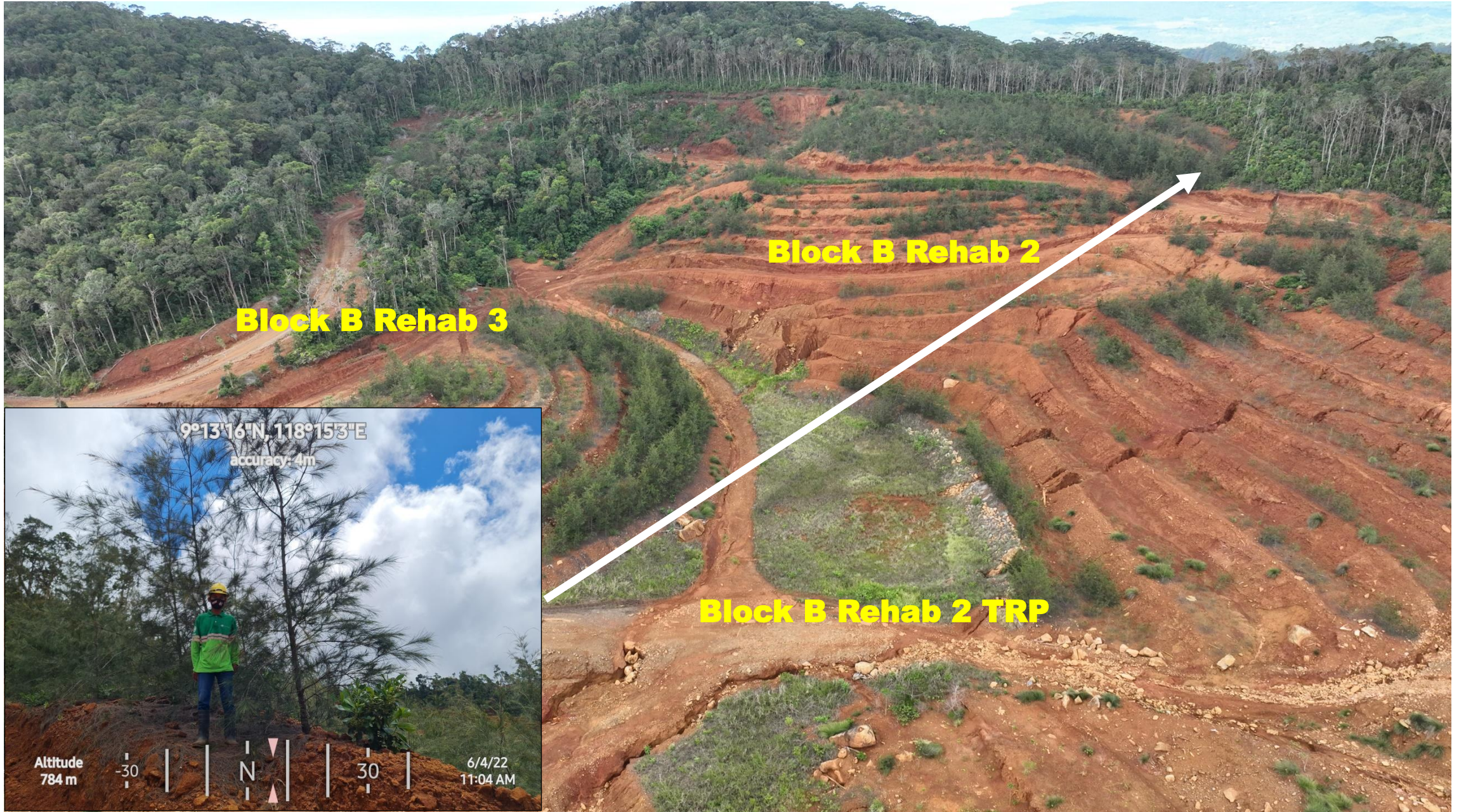
**Block B Rehab 3**

**Block B Rehab 2**

**Block B Rehab 2 TRP**



# BLOCK B MINE REHABILITATION AREA





# BLOCK B MINE REHABILITATION AREA

**Block B Rehab 6 TRP**





# BLOCK B MINE REHABILITATION AREA







THANK YOU