



Department of Environment and Natural Resources
Environmental Management Bureau
MIMAROPA Region



08 July 2022

MEMORANDUM

**FOR : The Regional Executive Director
DENR MIMAROPA REGION**

**The Regional Director
MGB MIMAROPA Region**

**FROM : The Regional Director
EMB MIMAROPA Region**

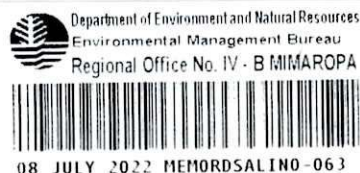
**SUBJECT : ENDORSEMENT OF THE SUBMITTED QUARRY
REHABILITATION PLAN OF THE LOCAL GOVERNMENT OF
CORON, PALAWAN RELATIVE TO THE EXCAVATED
MOUNTAIN AT SITIO DIPULAO, BRGY. POBLACION 6, CORON,
PALAWAN FOR THE CONSTRUCTION OF THE CORON
STADIUM, TERMINAL, AND OTHER GOVERNMENT FACILITIES**

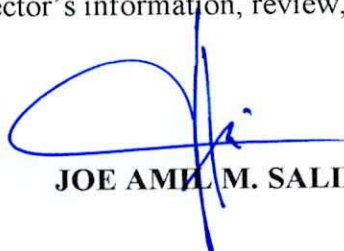
This is with reference to the disposition made during the Coron Taskforce meeting on 26 May 2022 held at Function Hall, Coron Westown Resort, Brgy. Poblacion 6, Coron, Palawan. Accordingly, the Local Government of Palawan shall submit a Quarry Rehabilitation Plan, including the environmental impact assessment, for the excavated mountain at Sitio Dipulao, Brgy. Poblacion 6, Coron, Palawan. Please be informed that the excavated material from the site is being utilized by the Coron Bay Development Project for its 49 Hectares reclamation activity.

In this regard, the office of the undersigned is respectfully forwarding the submitted quarry rehabilitation plan dated 07 July 2022 of the LGU Coron, Palawan for the said area. Please be informed that this Office has already instructed LGU Coron to submit the Environmental Impact Assessment (EIA) Report of the rehabilitation programs as well.

Attached is the submitted rehabilitation plan for perusal.

For the Regional Executive Director and Regional Director's information, review, and comments.




JOE AMEL M. SALINO



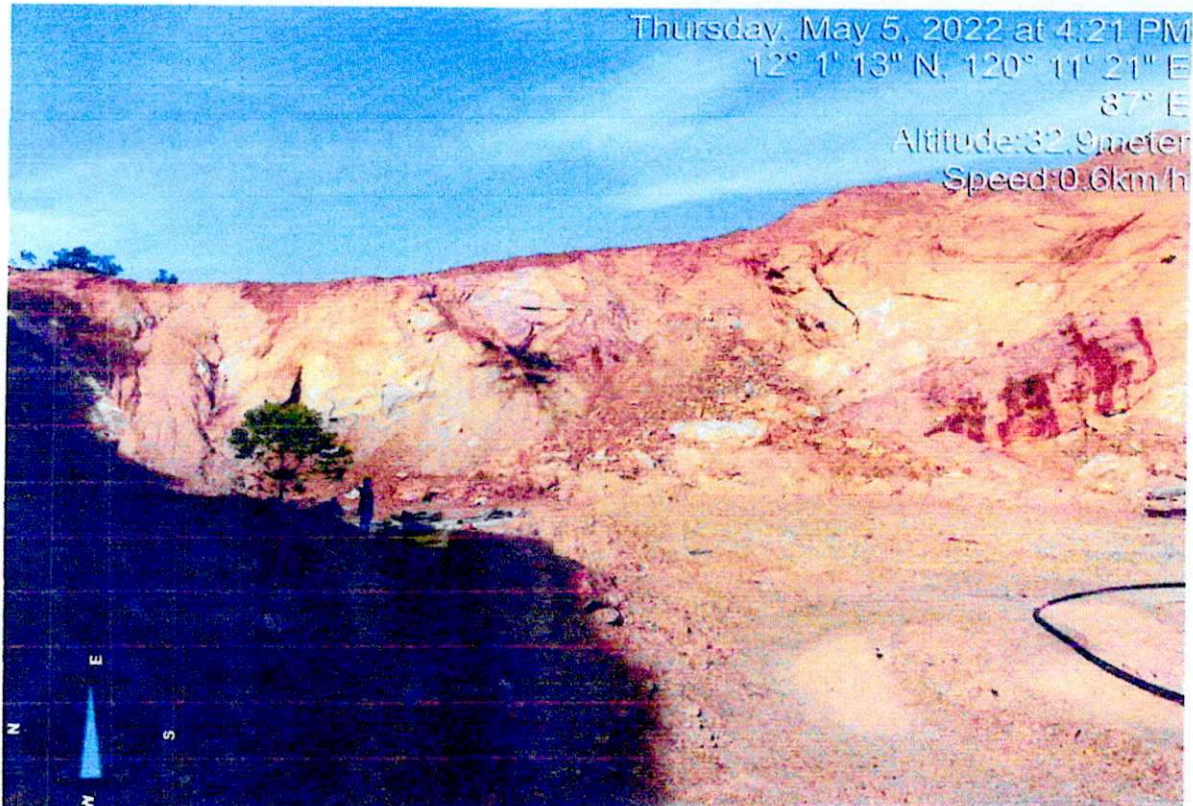
ENGINEERING
OFFICE

RECORDS SECTION
EMB-MIMAROPA REGION

02/07/22

RECEIVED BY
Charisse Vera

QUARRY REHABILITATION PLAN



Barangay Poblacion 6, Coron, Palawan

Prepared by: Municipal Planning and
Development Office

I. PROJECT IDENTIFICATION

Project Title	:	QUARRY REHABILITATION
Proponent	:	MUNICIPAL GOVERNMENT OF CORON, PALAWAN,
Location	:	BARANGAY POBLACION 6, CORON, PALAWAN
Total Project Cost	:	THREE MILLION PESOS (P3,000,000.00)

II. PROJECT DESCRIPTION

A. Background/Rationale

The Municipal Government identified an area for the proposed Government Buildings and Facilities at Barangay Poblacion 6, Coron, Palawan. A total of 6 hectares were identified and portion of which are mountainous and hilly which need to be excavated and quarry to flatten the surface. The local government ask assistance to the local construction firm, 428 to quarry the area and in return the waste materials will be utilized for the reclamation at Barangay Poblacion 3 and Poblacion 5. Buildings and Facilities that will be establish in the area are 1. Stadium, 2. LTO Building 3. Regional Supreme Court 4. Integrated Terminal 5. STP 6. RAC Site.

The DENR MGB MIMAROPA had issued a Cease-and-Desist Order to the Mountain Quarry at the above-mentioned area. During the technical conference with the DENR and other stake holders, the DENR instructed the Local Government to submit a rehabilitation Plan prior to MGBs review and approval.

The Municipal Government of Coron is committed to prepare rehabilitation plan of the quarry sites at the proposed Government Buildings and Facilities at Bgy. Poblacion 6 and implement it as per plan and submit it to other concerned agencies.

B. Objectives

1. To rehab the quarry area
2. To ensure that the slope of the extracted area is safe and stable.
3. To help addressed and mitigate the impacts of the quarry to the ecosystem

C. Stakeholders

- a. Local Residence near the area
- b. Local Government Unit
- c. Barangay
- d. DENR MGB
- e. DENR EMB
- f. DENR CENRO
- g. PMRB
- h. PCSO
- i. DPWH
- j. LTO
- k. Supreme Court
- l. TIEZA
- m. ADB

D. Project Design

In rehabilitating and stabilizing the quarry area, the LGU will use Eco Net Technology for the Slope Protection (see attach design) in order to prevent erosion and rock fall as well. After stabilize, appropriate vegetation cover will undertake using appropriate species.

E. Project Strategies

The Quarry Rehabilitation Plan Detailed Engineering Design will be prepared by the Municipal Engineering Office. It will be subjected to competitive bidding process to ensure transparency and accountability. Maintenance of the project will be supervised by the Municipal Engineering Office and appropriate measure if necessary will be included in the plan.

III. FINANCIAL DETAILS

Budgetary Requirements

GRAND TOTAL	P/3,000,000.00
--------------------	-----------------------

IV. PROJECT COMPONENTS AND IMPLEMENTATION SCHEDULE

	A	S	O	N	D	J	F	M	A	M	J	J
1.Site Preparation												
2.Quarry Rehabilitation Works												
3.Slope Stabilization												
4.Monitoring and Evaluation												

V. SUSTAINABILITY

Regular monitoring and maintenance will be regularly done by the Municipal Engineering Office and EMB-DENR

VI. IMPLEMENTATION ARRANGEMENTS

The Quarry Rehabilitation will be supervised by the Municipal Engineering Office with technical assistance from the 428 Construction Firm. While monitoring and evaluation of the project will be lead by the Municipal Engineering Office and the Municipal Planning and Development Office.

VII. PROJECT OUTPUT/OUTCOME

Once the rehabilitation is complete will result in significant environmental and social benefits and the area will be safer and stable for any future development.

Prepared by:

ENP/ENGR. **MICHAEL ADRIAN FABABER**, MPA, MAURP
MPDC

ENGR. **IKE D. PARANGUE**
Municipal Engineer

Noted and Approved:

MARIO T. REYES, JR.
Municipal Mayor

ECO NET

MOUNTAIN SLOPE

MOUNTAIN SLOPE


(A) ISOMETRIC VIEW & DETAIL

MOUNTAIN
SLOPE

MOUNTAIN SLOPE

ISOMETRIC VIEW & DETAIL
SCALE NOT TO SCALE

REVISIONS	
NO.	DESCRIPTION
1.	
2.	
3.	
4.	
5.	
6.	
7.	
8.	
9.	
10.	
11.	
12.	
13.	
14.	
15.	
16.	
17.	
18.	
19.	
20.	
21.	
22.	
23.	
24.	
25.	
26.	
27.	
28.	
29.	
30.	
31.	
32.	
33.	
34.	
35.	
36.	
37.	
38.	
39.	
40.	
41.	
42.	
43.	
44.	
45.	
46.	
47.	
48.	
49.	
50.	
51.	
52.	
53.	
54.	
55.	
56.	
57.	
58.	
59.	
60.	
61.	
62.	
63.	
64.	
65.	
66.	
67.	
68.	
69.	
70.	
71.	
72.	
73.	
74.	
75.	
76.	
77.	
78.	
79.	
80.	
81.	
82.	
83.	
84.	
85.	
86.	
87.	
88.	
89.	
90.	
91.	
92.	
93.	
94.	
95.	
96.	
97.	
98.	
99.	
100.	



PREPARED BY:
CHRISTIAN JAY CALLEGRO
AUTOCAD OPERATOR

CHECKED BY:
JOE D. TORRES
MUNICIPAL ENGINEER

PROJECT TITLE:
PROPOSED ECO NET
SLOPE PROTECTION
DUGONG BAY, LAKE LUNA, CALABARZON

APPROVED BY:
MARCO REYES JR.
MUNICIPAL MAYOR

CONTRACTOR:

IN SIGN, SIGNIFY BY making it
Drawing and Description and other material
Document 2020 Any other, changed or added, or
technical change of drawing, on the following Project
Document 2020 of the drawing, unless the subject has
been made to consider and it shall be subject
for any error in drafting or to make copies of any
Document 2020 for use in the replication of and for
project of building, unless otherwise specify or in
which about the subject content of the building
drawing or all document 2020.

SHEET CONTENTS SHOWN
AS SHOWN

DESIGNED/CHECKED BY: CCG **DATE:** 01-05-2022
SCALE: **DRAWN BY:** **DATE:** **DATE:**
AS SHOWN CCG 01-05-2022
SHEET NO **APPROVED BY:** **DATE:**

REVISION: **DATE:**

A-02

