



Dive Safari Circuit

MIMAROPA Dive Assessments



Objectives:

- Assess the potential of dive sites as tourism destinations and identify factors which may contribute or hinder the attainment of this
- Provide recommendation for further product development/enhancement
- Provide marine ecology assessment and fish population specifics
- Provide documentation through photos and videos

Summary of dive sites assessed

Province	Municipality	Number of Sites
Marinduque	Gasán	2
	Buenavista	2
	Torrijos	2
Palawan	Busuanga	3
	Culion	3
Oriental Mindoro	Pola	2
	Puerto Galera	2
Occidental Mindoro	Paluan	3
	Mamburao	3
	Abra de Ilog	3

Marinduque

Municipality	Dive Sites
Torrijos	Congressman's Canyon
	Speakers Canyon
Buenavista	Metati Point
	Yooc Puntod
Gasán	Bugtong
	Baltazar Island





Figure 8. One of the sunken morion statue along with some of the marine critters (sponge and feather star) encountered in Congressman's canyon

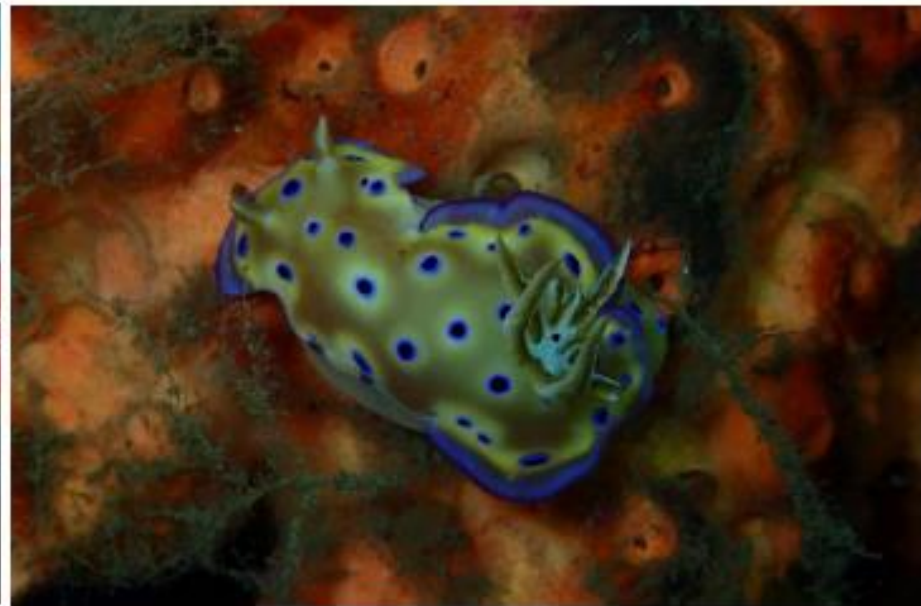


Figure 18. Some of the nudibranchs, barrel sponges, and lionfish you may encounter in Puntod Reef.



Figure 15. Some of the marine critters that can be found in Metati Point.



Figure 11. Some of the marine animals encountered in Speaker's canyon, a green sea turtle, giant barrel sponge (*Xestospongia testudinaria*), feather star (*Oxycomanthus benetti*) and a big eye fish (*Priacanthus* sp.)

Table 4. Dive Site Summary

Dive site	Jump-off Point	Travel time	Type of Dive	Dive certification level	Dive time	Max Depth	Average Depth	Current
Congressman's Canyon	Poctoy, Torrijos	15 to 20 mins	Wall-like	Open water	30 to 45 mins	25 meters	12 meters	Light
Speaker's Canyon/ Cagpo Cave	Poctoy, Torrijos	15 to 20 mins	Wall-like, cave	Open water	30 to 45 mins	30 meters	15 meters	Light
Luxor	Luxor Resort and Restaurant, Pangi, Gasan	5 to 10 mins	Muck, night	At least Advanced Open Water	At least 1 hr	2 meters	1.6 meters	None
Baltazar Island	Pinggan, Gasan	At least 1 hr	Wall, Deep	- Open water - if with cave entry, at least Advanced Open Water	40 to 50 mins	32 meters	12-15 meters	Light
Bugtong	Pinggan, Gasan	30 mins	Rubble, Channel	Open water	40 to 50 mins	10 meters	9.5 meters	Light
Metati Point	Yook, Buenvista	20 to 30 mins	Wall, Deep	Open Water	40 to 50 mins	35 meters	16 meters	Light
Puntod	Yook, Buenvista	20 to 30 mins	Deep	At least Advanced Open Water	40 to 50 mins	30 meters	18 meters	Light

Palawan

Municipality	Dive Sites
Busuanga	Okikawa Maru
	Nanshin Maru
	Concepcion Marine Protected Area (MPA)
Culion	Malcapuya Island
	Piedra Blanca
	Buhi Reef

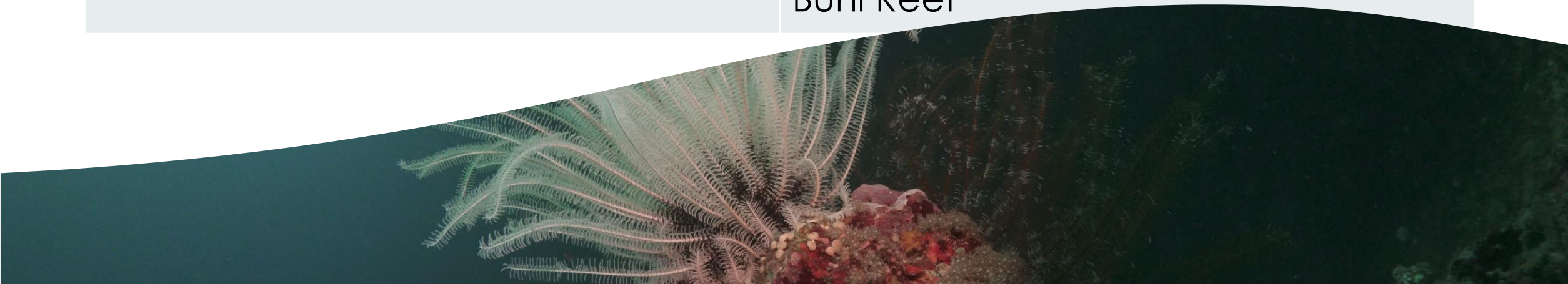
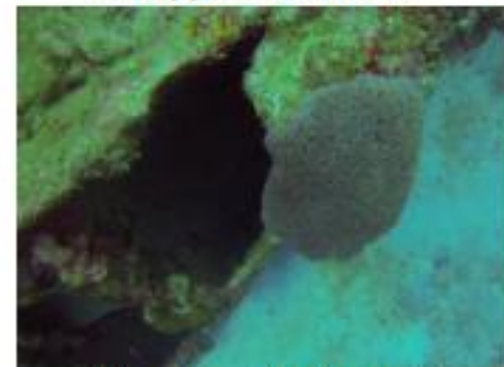




Figure 6. Branching corals thickets in the Concepcion MPA in Busuanga, Palawan



Lithopyllon undulatum



Physogyra lichtensteini



Echinopora sp.



Euphyllia sp.



Trachphyllia geoffroyi



Cynarina lacrymalis

Figure 8. Images of some hard corals found on the dive sites.



Mandarin Fish in Piedra Blanca



Squid



Crab



Sea Slug

Figure 11. Some macro photography subjects in the Culion dive sites.
(Photo courtesy of Aijo Nakamura)



Figure 18. Some of the underwater photos in Busuanga.

Table 10. Dive site information at a glance in the municipalities of Culion and Busuanga

	CULION			BUSUANGA		
	Malcapuya Island	Piedra Blanca	Buhi Reef	Concepcion MPA	<i>Okikawa Maru</i>	<i>Nanshin Maru</i>
Jump-off Point	Balala	Balala	Balala	Pearl Bay	Pearl Bay	Pearl Bay
Travel time	1 hr 45 mins to 2 hrs	1 hr	20 to 30 mins	20 mins	5 mins	1 hr
Type of Habitat	Natural	Natural	Natural	Natural	Artificial	Artificial
Type of dive	Coral	Coral	Coral, coralline sand	Coral, coralline sand	Wreck	Wreck
Dive certification	Open Water	Open Water	Open Water	Open Water	At least Advanced Open water	At least Advanced Open water
Dive time (mins)	30 to 45	30 to 45	30 to 45	30 to 45	30 to 45	30 to 45

	CULION			BUSUANGA		
	Malcapuya Island	Piedra Blanca	Buhi Reef	Concepcion MPA	<i>Okikawa Maru</i>	<i>Nanshin Maru</i>
Horizontal Visibility (m)	30	30	20	15	15	30
Vertical Visibility (m)	30	20	15	15	10	30
Max Depth (m)	16.8	17.7	23.5	17.4	25	33.5
Average Depth (m)	9.5	8.5	10.7	10	13.7	14.9
Current at the time of diving	No current	Slow	Slow	Slow to moderate	Slow	No current

Recommendations

1. Potential for underwater photography
2. Retrofit boats to accommodate
3. Capability training for dive guides
4. Protection of the dive sites



Occidental Mindoro

Municipality	Dive Sites
Mamburao	Karawisan Reef 1
	Karawisan Reef 2
	Dungon Reef
Paluan	Magiit
	Mahabang Buhangin
	Binarera
Abra de Ilog	Sitio Sigman (Night Dive)
	Munting Buhangin (Tuko Beach)
	Apyas (Batalang Bato)

Oriental Mindoro

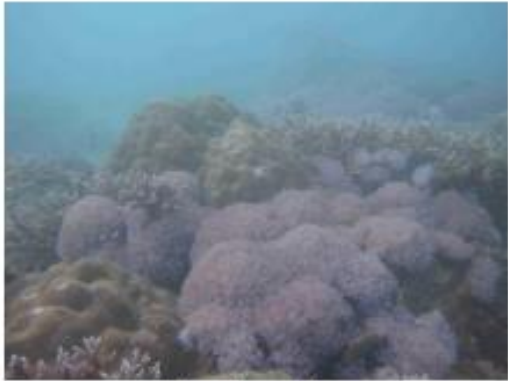
Municipality	Dive Sites
Puerto Galera	Site 1
	Montani (Night Dive)
Pola	Tagumpay Beach (Peter the Rock)
	Misong / Song of the Sea Fish Sanctuary



Dungon Reef, Mamburao



Song of the Sea, Pola



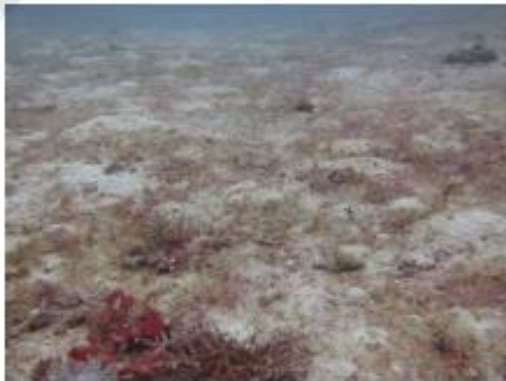
Tuko, Abra de Ilog



Magiit, Paluan

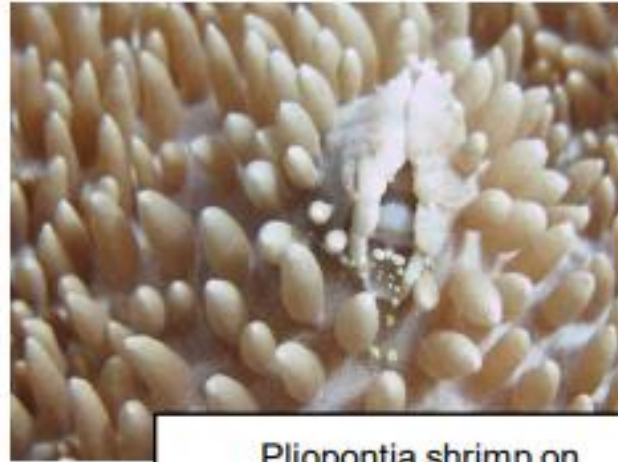


Karawisan SW, Mamburao



Dive Site 1, Puerto Galera

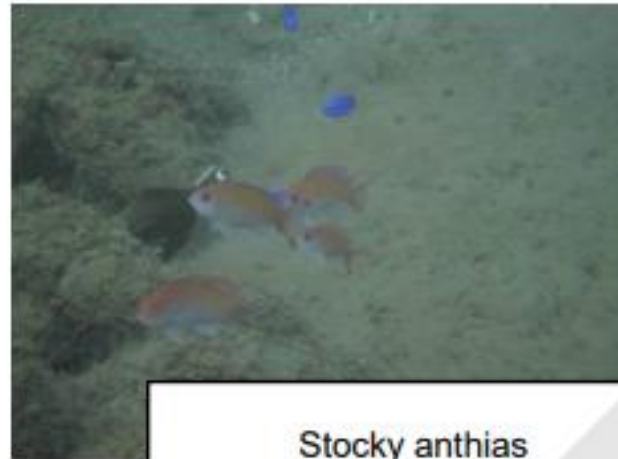
Figure 7. Snapshot of coral reef areas found on the five selected municipalities of the province of Mindoro



Pliopontia shrimp on corallomorphian



Plerogyra with Waminoa - Batalang Bato



Stocky anthias



Sea Slug

Figure 13. Some macro photography subjects in Occidental Mindoro

Table 16. Dives site information Summary in the in the Province of Oriental Mindoro

Location / Parameter	PUERTO GALERA		POLA	
	Site 1	"Montani"	Misong / Song of the Sea Fish Sanctuary	Tagumpay Beach (Peter the Rock
Jump-off Point	Arkipelago Divers	Arkipelago Divers	Municipal port	Tagumpay Beach
Travel time	15	10	45	30
Type of Habitat	Sandy	Sandy, coral/ sponge patches	Coral	Coral
Type of dive	Photography	Photography	Intro, fun dive	Intro, fun dive
Dive certification	Advance Open Water	Advance Open Water	Open water	Open water
Dive time (mins)	56	98	39	41
Horizontal Visibility (m)	9	8	10	8
Vertical Visibility (m)	10	9	9	8
Max Depth (m)	15.8	7.8	13	17.2
Average Depth (m)	15	6.2	9	15.4
Current	None	Low	None	None

Table 17. Dives Site Information Summary in the Province of Occidental Mindoro.

Location / Parameter	MAMBURAO			PALUAN			ABRA DE ILOG		
	Karawisan SouthWest (SW)	Karawisan NorthEast (NE)	Dungon	Magiit	Binarera	Mahabang Buhangin	Sigman	Apyas (Batalang Bato)	Munting Buhangin (Tuko Beach)
Jump-off Point	Public market	-	Tayamaan Beach	La Virginia Beach Resort	La Virginia Beach Resort	La Virginia Beach Resort	Sigman	Agbalala	Sigman
Travel time (mins)	30	10	30	66	30	35	35	55	35
Type of Habitat	Coral reef	Coral reef	Coral reef	Coral reef	Coral reef	Coral reef	Coral, Sand	Coral, Sand	Coral, Sand
Type of dive	Deep dive	Deep dive	Intro dive, Deep dive	Intro dive, Deep dive	Intro dive, Deep dive	Intro dive, Deep dive	Intro dive, photography	Intro dive, photography	Intro dive, photography
Dive certification	Open water, Advance Open Water	Open water, Advance Open Water	Open water, Advance Open Water	Open water, Advance Open Water	Open water, Advance Open Water	Open water, Advance Open Water	Open water, Advance Open Water	Open water, Advance Open Water	Open water, Advance Open Water
Dive time (mins)	58	52	55	57	47	55	51	49	51
Horizontal Visibility (m)	15	15	15	15	15	15	7	8	7
Vertical Visibility (m)	20	20	20	20	20	22	7	6	6
Max Depth (m)	21	22	22	25	27	25	10	27	11
Average Depth (m)	14	14	12	11	7	12	6	14	8
Current	None	None	None	None	None	None	Low to Medium	Low	Low

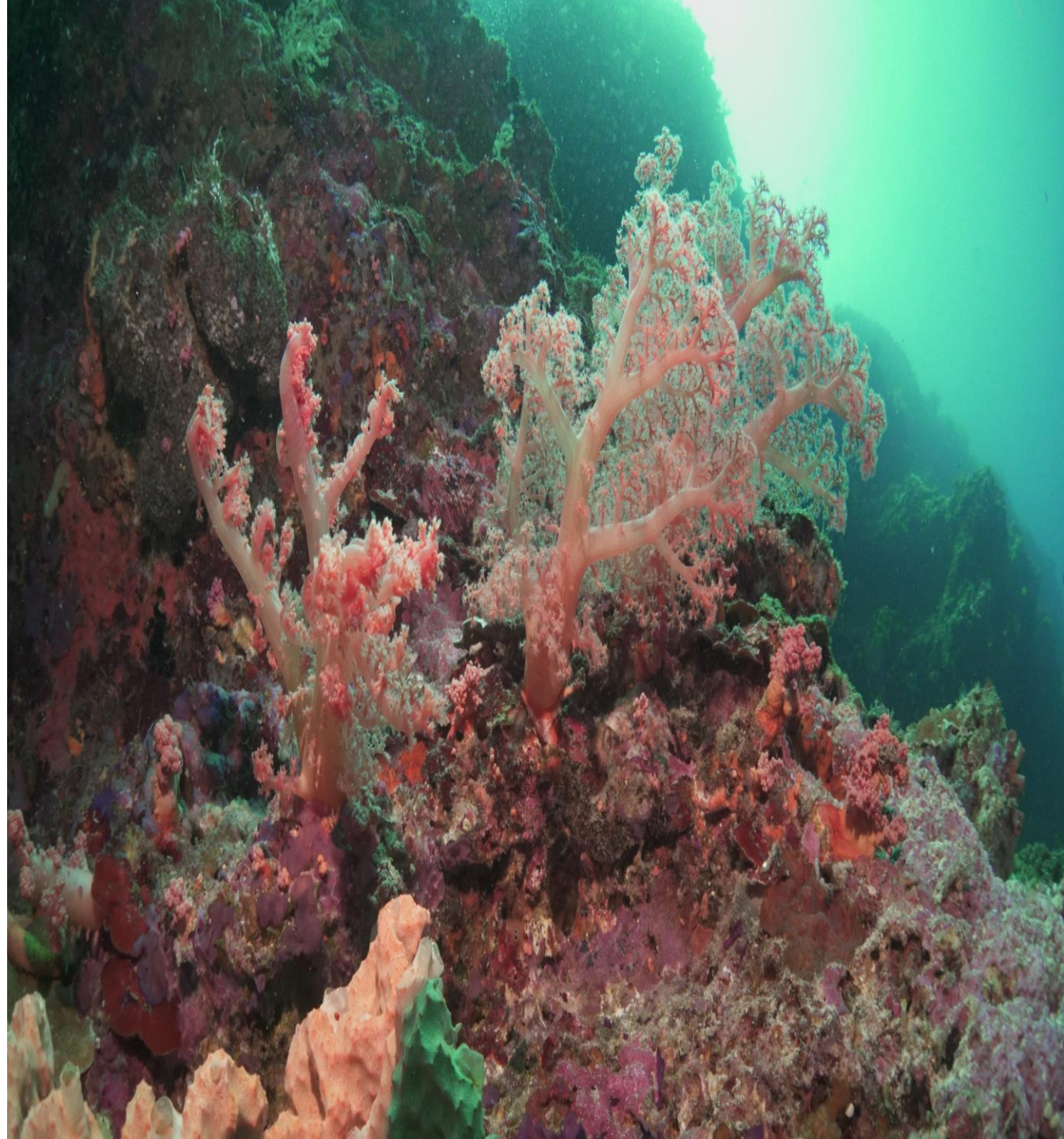
Recommendations

1. Potential for underwater photography
2. Retrofit boats to accommodate
3. Capability training for dive guides
4. Protection of the dive sites



Ways Forward:

1. Conduct of Dive Guide Trainings
2. Assessment of other dive sites
3. Launching of MIMAROPA Dive Safari Circuit



An underwater photograph showing a diver's leg in a black wetsuit with white trim, surrounded by numerous bubbles. The background is a bright blue sky with white clouds, visible through the water's surface.

Thank you.