




SuperMap

📍 Building 107, No. A10, Jiuxianqiao North
Road, Chaoyang District, Beijing, 100015, China


✉ E-mail: biz@supermap.com

🌐 www.supermap.com

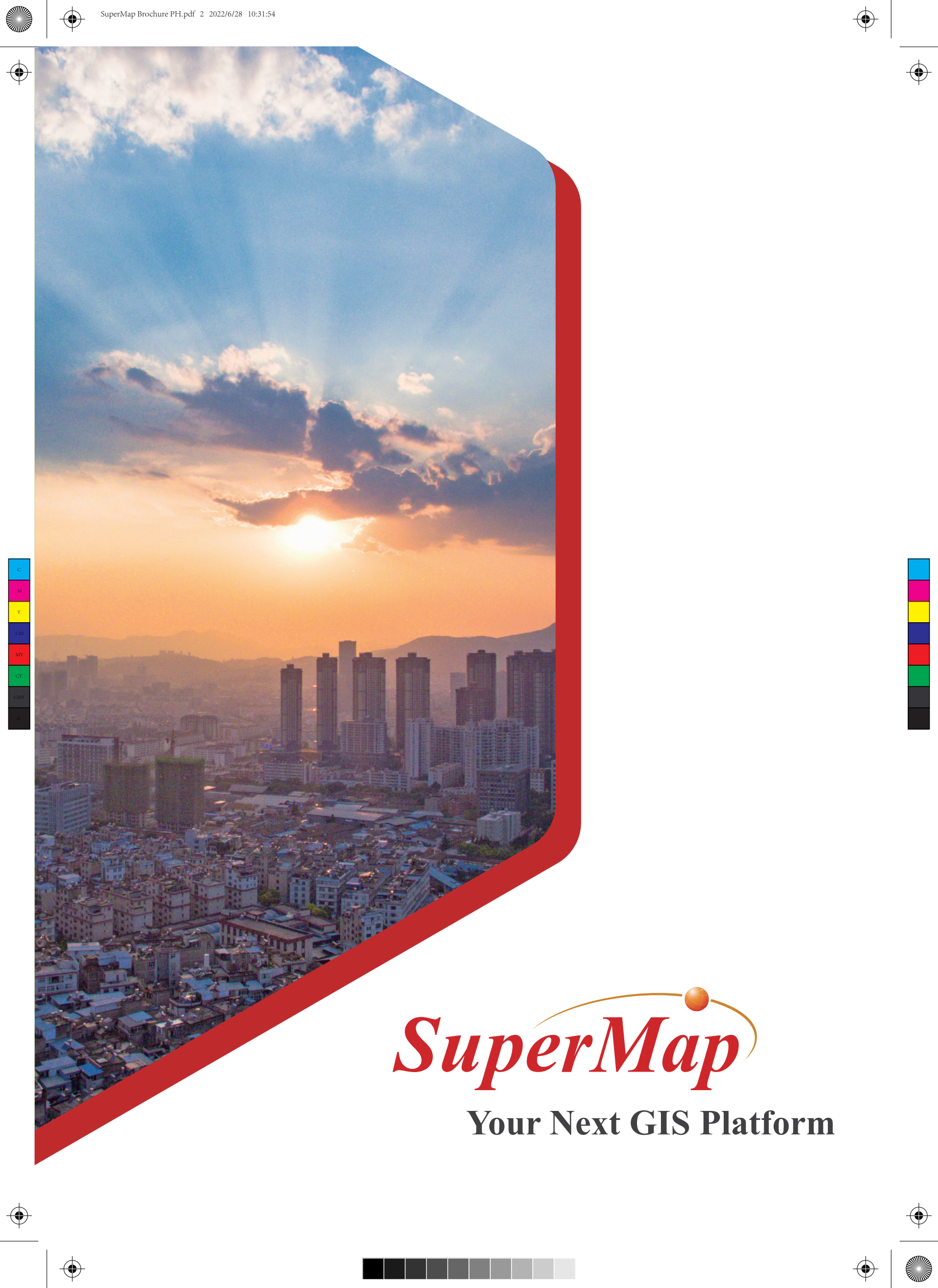
 SuperMap GIS

 SuperMap

 SuperMap_GIS

 SuperMap_GIS

 SuperMap GIS



SuperMap

Your Next GIS Platform



Content

- § Company Introduction
- § Partnership
- § Technology System
- § Products
- § Industry Applications
- § Application Cases

Introduction

A Leading GIS Platform Manufacturer

Who is SuperMap?

SuperMap was founded in 1997, focusing on the research, development and application services of GIS related software technology. It consists of SuperMap Software (parent company, stock code: 300036), wholly owned subsidiaries, and holding subsidiaries, as well as domestic branch offices and agencies. In 2021, the total staff number of SuperMap is more than 4,000 and the annual revenue reached 294 million USD (1.87 billion RMB).

How has SuperMap Performed So Far?

As a GIS software manufacturer, SuperMap has made a great effort on the development of GIS platform. It now has the 3rd largest share in global GIS market, while the 1st largest share in Asian GIS market (from ARC Advisory Group). It has three business lines of platform software, application software and cloud service, and more than 1000 ecological partners to empower the informationization of governments and enterprises in industries. Now, SuperMap ranks 1st in Chinese GIS market and has developed distributors and partners in over 50 countries and SuperMap GIS end users in over 100 countries.

What will SuperMap Be?

With “Innovate IT Value with Geo-intelligence” as the mission and “Create Cutting-edge Technologies, Light up Every Corner of the Planet with Geo-intelligence” as the vision, SuperMap will keep providing advanced GIS technologies and products to more global users.



Partnership

Global Partners

With more than 700 partners, SuperMap not only values existing partner network, but also concentrates on developing new partnerships. SuperMap is dedicated to working with its partners to fulfill its mission:

Innovate IT Value with Geo-intelligence.



Technology System

SuperMap GIS 10i(2021)

Big Data GIS

AI GIS

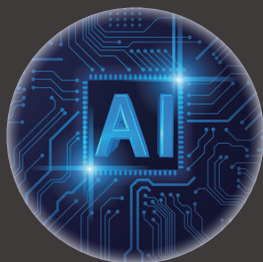
Three Dimension GIS

Distributed GIS

Cross Platform GIS

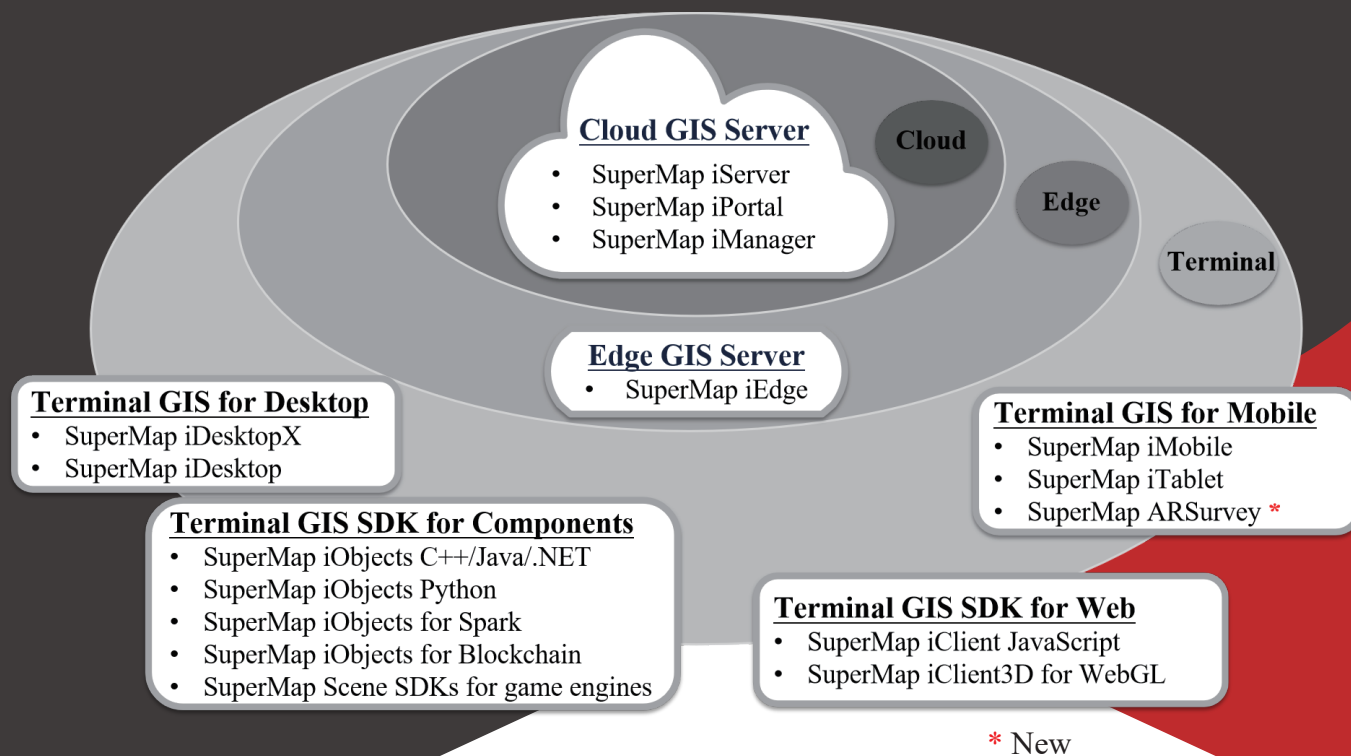
SuperMap GIS 10i(2021) Technology System (BitDC)

SuperMap GIS 10i(2021) integrates AI GIS technology, and further innovates Big Data GIS, 3D GIS, Distributed GIS and Cross Platform GIS to establish a five key technologies system of 'BitDC' for GIS platform software. It enriched and innovated GIS theory and technology, and empowered the informatization of various industries.



Products

SuperMap is devoted to developing and providing the most innovative Geographic Information System (GIS) platforms and solutions for global customers. SuperMap product line includes a full range of GIS platforms, including Desktop GIS, Server/Web GIS, Mobile GIS, and Online GIS, which makes SuperMap GIS known as one of the most complete GIS software platforms.



SuperMap GIS 10i(2021) Product Architecture

SuperMap iDesktop: Full-featured Customizable Desktop GIS

SuperMap iDesktopX: Full-featured Customizable Cross Platform Desktop GIS

SuperMap iObjects: Full-featured Components GIS SDKs

SuperMap iTablet: Native App for Mobile GIS

SuperMap ARSurvey: AR field surveying tools for Mobile GIS

SuperMap iMobile: Native SDKs for Mobile GIS

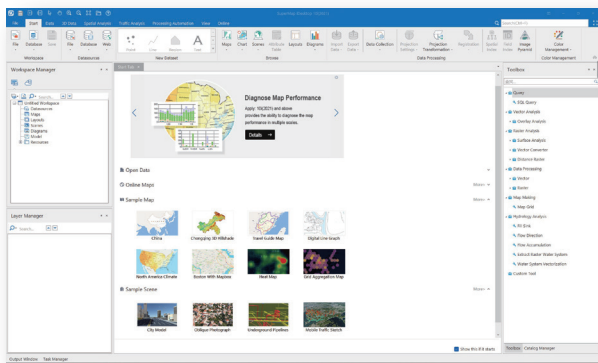
SuperMap iServer: Full-featured Application Server for Cloud GIS

SuperMap iPortal: Portal for Cloud GIS

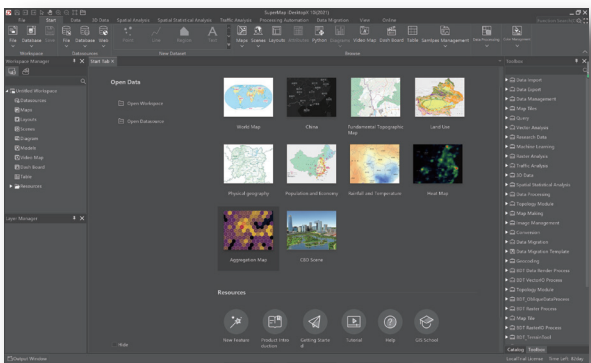
SuperMap iClient: Web GIS APIs for Browsers

SuperMap iManager: Operation Manager for Cloud GIS

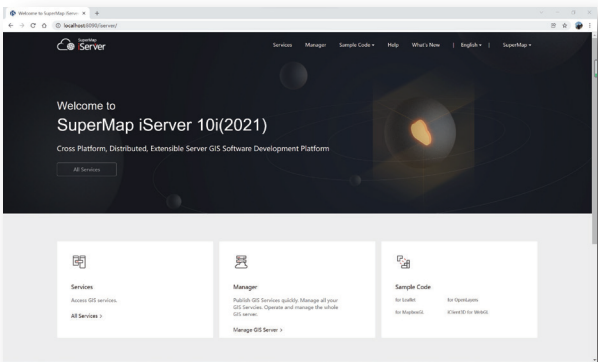
SuperMap iEdge: Server for Edge Computing GIS



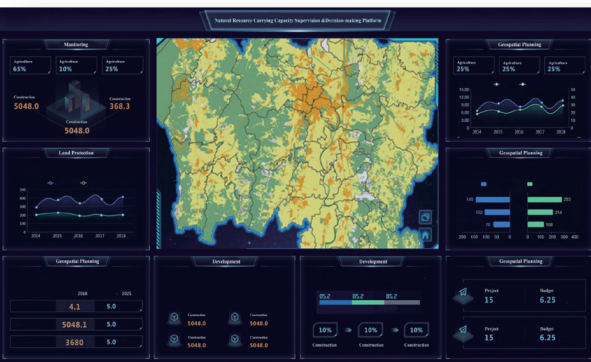
SuperMap iDesktop



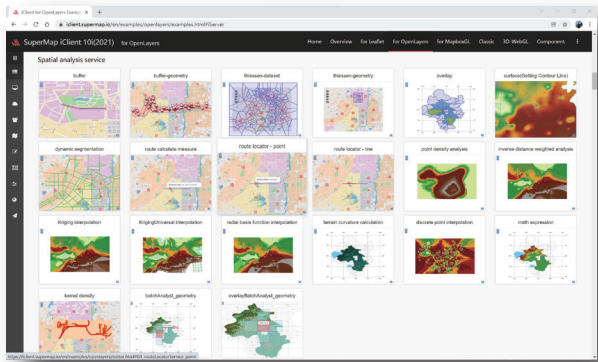
SuperMap iDesktopX



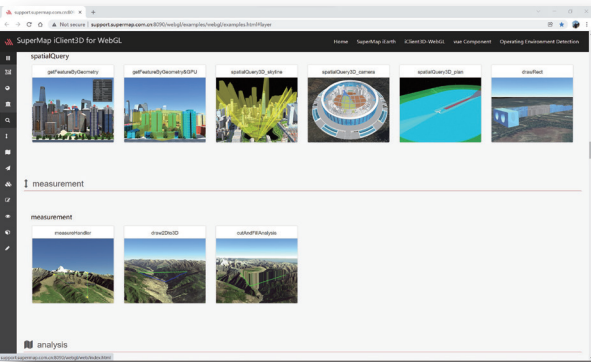
SuperMap iServer



SuperMap iPortal



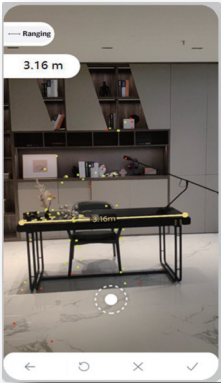
SuperMap iClient for JavaScript



SuperMap iClient3D for WebGL



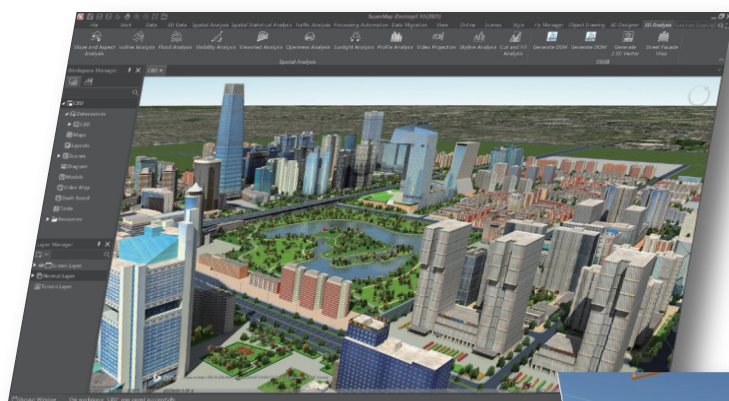
SuperMap iTablet



SuperMap ARSurvey

Industry Application

SuperMap GIS products and services are trusted by professionals worldwide since the release of its first product in 2000. Thousands of large-scale systems developed with SuperMap GIS are running smoothly and over 60 industries have been offered GIS solutions so far, including Land Management, Public Service, Statistics GIS, Real Estate, Facility Management and Urban Management, etc. The company has received numerous worldwide awards thanks to its high performance, ease-of-use, ease of integration and cost-effectiveness.





Construction Engineering:

Water Conservancy Facility Management
Building Management and BIM+GIS

Land Use and Cadastral:

Cadastral Management

Mapping:

Data Collection
Cartography

Smart City:

Underground 3D Pipeline
Oblique Photography
City Planning/Urban Designing

Energy and Electricity:

Electric Power Management
Oil Management

Environmental Protection:

Environmental Analysis
3D Protection Modeling of Ancient Buildings

Traffic:

Road and Railway Management System
Vehicle Station Management

Education:

Campus Management System

Military and Security:

Public Security Monitoring System
Military Simulation and Management System



Application Cases



Municipality GIS for Nyköping, Sweden



3D Underground Pipeline Management System, Germany



3D Cadastral Project, Turkey



Mobile AI Recognition of Water Meter, South Africa



National Police GIS, Mauritius



Land Property Management System, Egypt



House Decision Support System, Malaysia



Geospatial Data Services Portal, Malaysia



Global IOT Management System of HITACHI, Japan



One Map of Ground Strength of National Residence, Japan



Mobile Mapping Solution for Foreclime, Indonesia



Big Data Spatial for Secure BaseMap System in BSSN, Indonesia



Nature Reservoirs Locating System, Thailand



Smart Agriculture Real-time Soil Monitoring System, Thailand



Pipeline Analysis Solution, South Korea



Forest Disaster Management System, South Korea



Flight Monitoring System for Asiana Airline, South Korea



Mountain Development Support System, Cuba



Epidemic Surveillance System, Laos

