



Forest  
Foundation  
Philippines

Let's grow together.

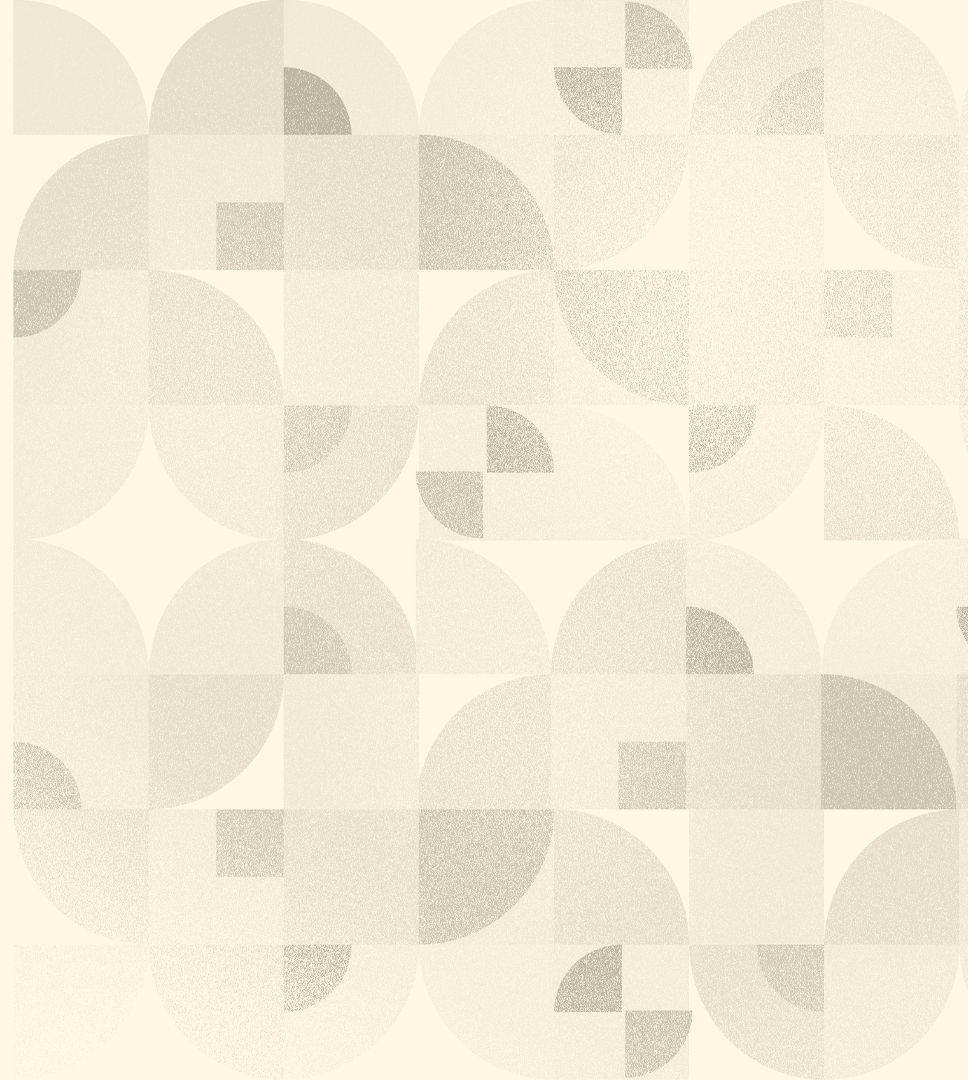
# Forest Foundation work in Palawan

September 5, 2023 | DENR MIMAROPA RED Office



# Flow

- About Forest Foundation
- Grantmaking in Palawan
- Special Projects
- Partnerships







Forest  
Foundation  
Philippines

Let's grow together.

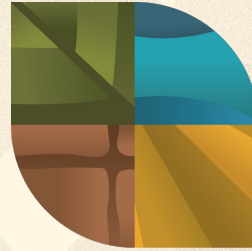
# About Forest Foundation Philippines





## About the Foundation

Established in 2002, under two bilateral agreements between the governments of the Republic of the Philippines and United States of America, Forest Foundation Philippines is a non-stock, non-profit, non-governmental organization **providing grants and technical assistance to organizations and individuals that empower the people to protect and conserve the forests.**



# Forest Foundation Philippines

Let's grow together.







Forest  
Foundation  
Philippines

Let's grow together.

# Results Framework 2023-2027: Enhancing Ecosystem Services and Fostering Forest-based Climate Action

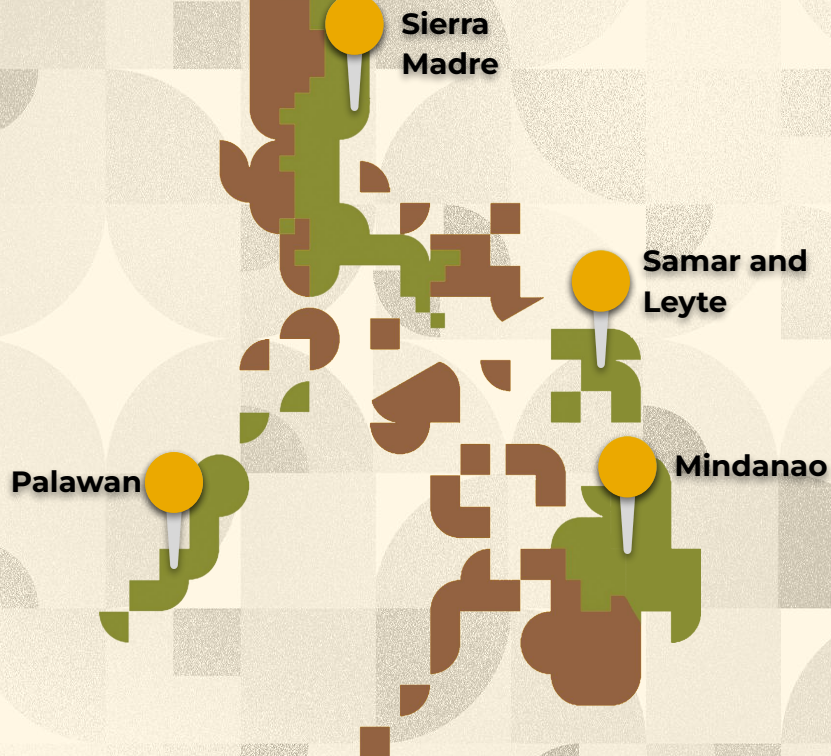




# Focal Landscapes

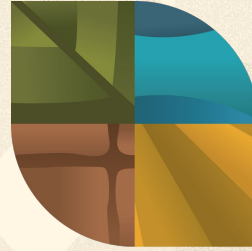
The Foundation will continue to work in the country's **most critical forest landscapes** that provide important ecosystem services for regional and local economies:

- **Sierra Madre** (Aurora, Bulacan, Cagayan, Isabela, Laguna, Nueva Ecija, Nueva Vizcaya, Quezon, Quirino, and Rizal)
- **Palawan**
- **Samar and Leyte**
- **Mindanao** (Bukidnon and Misamis Oriental, Lanao del Sur, and Eastern Mindanao Biodiversity Corridor)



The **Foundation's Results Framework for 2023-2027** is guided by the **sustainable forest landscape approach**.

It strives to protect and sustainably manage the **forests for water, land, and biodiversity** - with the overarching goal of enhancing **ecosystem services and forest-related climate action**.



**Forest  
Foundation  
Philippines**

**Let's grow together.**



# Results Framework 2023-2027

The Foundation will work with partners **to protect and sustainably manage the forests for water, land, and biodiversity, while also fostering forest-related climate action** through the following:

Holistic  
decision-making

Transdisciplinary  
perspective and  
participatory  
processes

Collaborative  
forest-related  
climate action



# Target Outcomes

Guided by the Results Framework 2023-2027, the Foundation and its partners will seek to **achieve four immediate outcomes:**



Grow  
Forests



Grow  
Opportunities



Grow  
Partners



Grow  
Advocates



## Grow Forests

### Enhanced forested landscapes that provide multiple ecosystem goods and services

- The Foundation supports **projects that restore, protect, and conserve forests and adjacent ecosystems**, while also sustainably managing them to meet the needs of the present and future generations.
- Projects are guided by a **data-driven approach** that puts **sustainable forest management** and **nature-based solutions** at the forefront of the strategy.





## Grow Opportunities

### Improved multi-stakeholder engagement through sustainable livelihoods and incentives

- The Foundation empowers local communities to **sustainably manage forests and directly benefit from their efforts through economic incentives and sustainable livelihoods.**
- This, in turn, leads to healthy forest ecosystems, better livelihood options for communities, and **long-term maintenance and productive use of forest lands.**



**Grow Partners**

## **Strengthened cross-sectoral partnerships for sustainable forest management**

- Building **strong, collaborative partnerships** is key to improving the **management and governance** aspects of forest conservation.
- The Foundation **brings together** the government, private sector, communities, organizations, and individuals to turn sustainable forest management goals into action.





## Grow Advocates

### Enhanced knowledge management and strategic communications

- The Foundation supports efforts that empower people and organizations to **become advocates for forest protection and conservation**.
- To solve context-specific problems, the Foundation ensures that diverse members of society **collaborate to produce and share knowledge, and tap into their passions and expertise** as advocates of the forest.



Forest  
Foundation  
Philippines

Let's grow together.

# Rooting for the Future.

We're rooting for a better future for us and the forests! With our Results Framework 2023-2027, we enable collaborative partnerships to take root today to create a greater impact on tomorrow – for the forest and everything connected to it.

Let's strengthen our connections.  
Let's grow together.







Forest  
Foundation  
Philippines

Let's grow together.

# Grantmaking in the Palawan Landscape





# Grantmaking in Palawan

- Assessments (forest, socio-cultural, livelihoods, organizational)
- Formulation of conservation plan
- Strengthening capacities of communities and CSOs protecting the forests
- Forest restoration and protection
- Enterprise development
- Building resilience through forest-based climate action

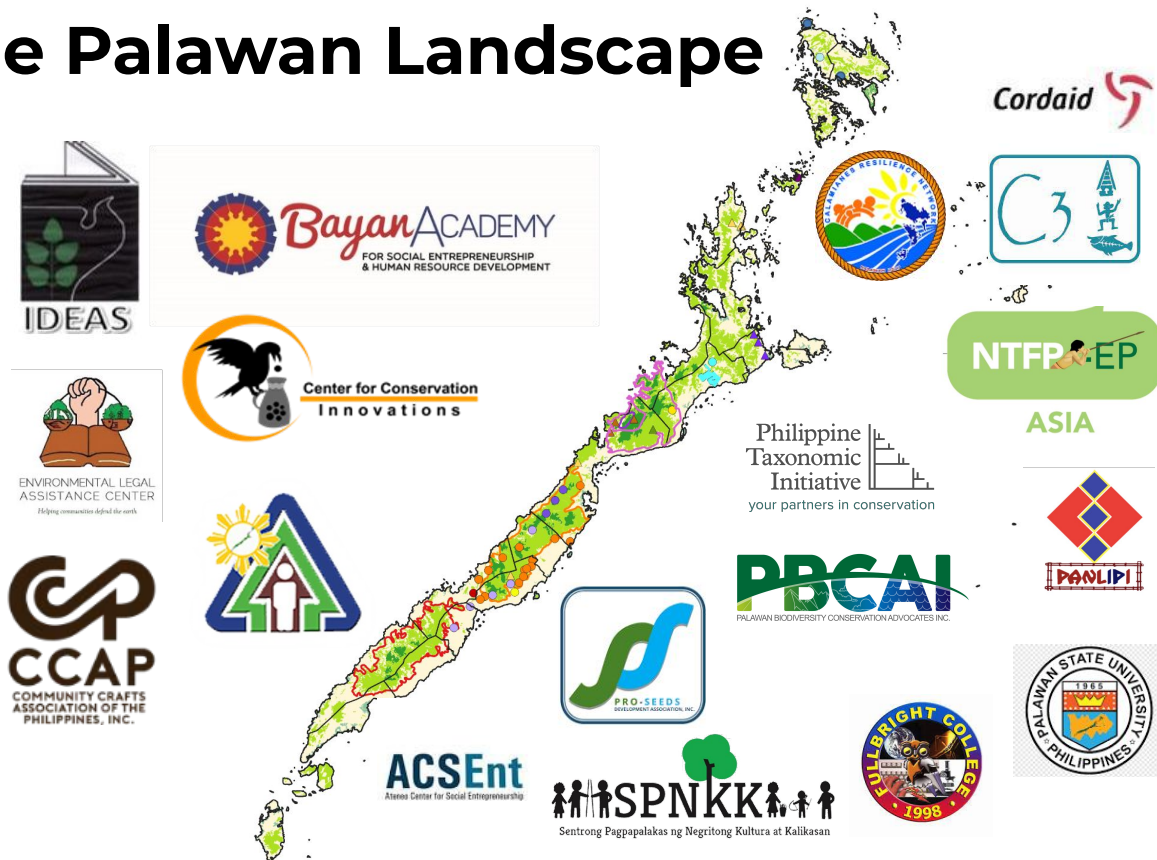




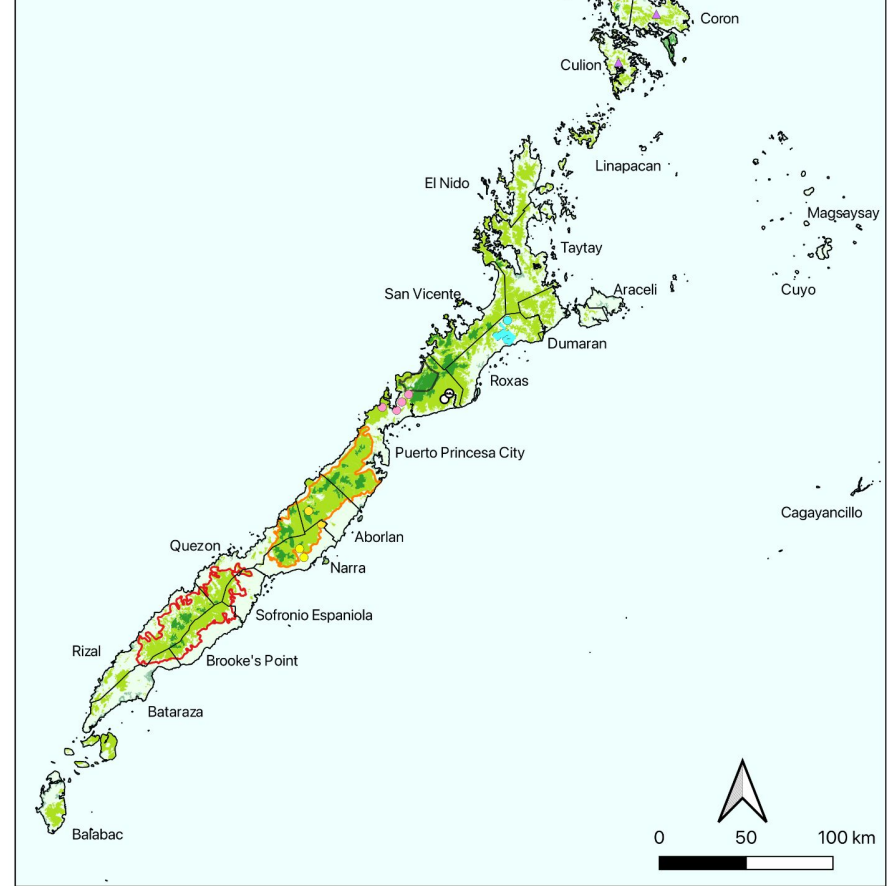
# Grantmaking in the Palawan Landscape

## Grantees and Partners

- People's Organizations (CBFM POs, Indigenous POs)
- Non-governmental organizations
- Mandated agencies
- Academe
- Social entrepreneurs
- Researchers



# Grantmaking in the Palawan Landscape



- PTI-NM
  - BGERMC
  - ZSL
  - CRN
  - LifeCollege
  - BCTA
- Puerto Princesa Subterranean Natural Park (PPSRNP)
- SSFMPC
- Victoria-Anepahan Mountain Range (VAMR)
- IDEAS
- Mt. Mantalingahan Protected Landscape (MMPL)
- IDEAS-MMPL Endowment
- Municipal Boundary
- NAMRIA Land Cover (2015)
- Closed Forest
  - Mangrove Forest
  - Open Forest



# Vision for the Palawan Landscape

Sustainable forest management and improved forest landscape governance as forest-related climate action

## Priority Projects

- Watershed management
- Mangrove conservation
- Promotion of- and support for sustainable and community-based enterprises and ecotourism
- Landscape-wide advocacy campaign
- Capacity building for sustained ecosystem services
- Strengthening and scaling-up of past and existing forest protection and restoration efforts







Forest  
Foundation  
Philippines

Let's grow together.

# Special Projects

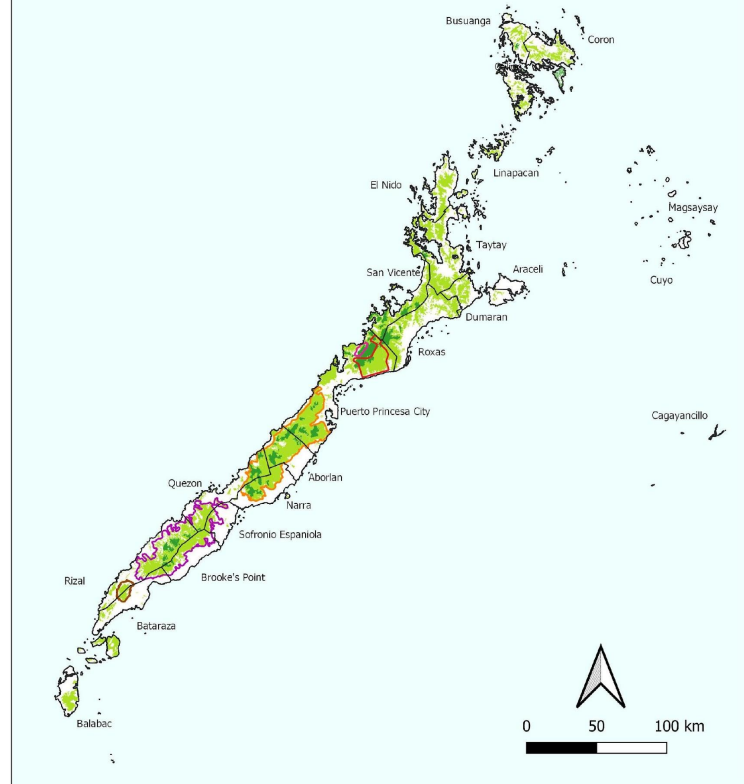




# Special Projects

- **MMPL Endowment Fund** – Sustainable financing for strengthened management of MMPL
- **Phil SIBOL** – Strengthened science-driven decision making; improved economic incentives; strengthened enforcement
- **SILG** – Landscape governance – capacity development for IPLCs, addressing drivers of deforestation, continued dialogues

Special Projects Map





Forest  
Foundation  
Philippines

Let's grow together.

# Partnerships





# Partnerships

**PCSD/PKP** - Landscape governance – capacity building, dialogues, policy research and development; Knowledge management

**DILG MIMAROPA LGRC** - As part of MSAC, provide support towards knowledge management and capacity building of LGUs

**Private Sector** - Forest restoration and carbon financing

## Contact us.

- **Phone Numbers:** (+63 2) 8891 0595;  
(+63 2) 8864 0287
- **Website:** [www.forestfoundation.ph](http://www.forestfoundation.ph)
- **Grant Portal:**  
<https://grants.forestfoundation.ph>
- **Facebook & Instagram:**  
@forestfoundationph
- **Youtube:**  
@ForestFoundationPhilippines



**Forest  
Foundation  
Philippines**

**Let's grow together.**

Ana Gabriel  
Landscape Coordinator for Palawan  
[avgabriel@forestfoundation.ph](mailto:avgabriel@forestfoundation.ph)



# Thank You



Forest  
Foundation  
Philippines

Let's grow together.

