

USAID SAFE WATER CALATEGAS CATCHMENT HYDROLOGIC REPORT

PALAWAN

September 2021

This publication was produced by the USAID Safe Water Project under Contract No. 72049220D00002 and prepared by Geoscience Foundation Inc. as subcontracted by DAI Global, LLC at the request of the United States Agency for International Development. This document is made possible by the support of the American people through the United States Agency for International Development. Its contents are the sole responsibility of the author(s) and do not necessarily reflect the views of USAID or the U.S. Government.

Table of Contents

LIST OF ACRONYMS	2
SECTION 1: SURFACE WATER	3
1.1 BASIN INFORMATION.....	3
1.2 HISTORICAL DISCHARGE	4
1.3 FLOW ANALYSIS.....	7
Method 1: Discharge derivation by catchment area transposition	7
Method 2: Rainfall – discharge analysis using the rational method	8
Method 3: Multiple River correlation of rivers in Palawan using regression analyses.....	10
1.4 PROJECTION OF FUTURE FLOWS UNDER DIFFERENT CLIMATE SCENARIOS	12
SECTION 2: GROUNDWATER.....	17
2.1 POTENTIAL GROUNDWATER RECHARGE AREAS.....	17
A. Drainage Density.....	19
B. Slope Gradient.....	19
C. Land Cover	20
D. Lithology.....	21
2.2 DETERMINATION OF POTENTIAL GROUNDWATER RECHARGE AREAS	22
SECTION 3: POLICY RECOMMENDATIONS	25
REFERENCES.....	26

List of Acronyms

APHRODITE	Asian Precipitation – Highly-Resolved Observational Data Integration Towards Evaluation of the Water Resources
BOD	Bureau of Design
BRS	Bureau of Research and Standards
DOST-PAGASA	Department of Science and Technology – Philippine Atmospheric, Geophysical and Astronomical Services Administration
DPWH	Department of Public Works and Highways
FDC	Flow Duration Curve
GHG	Greenhouse gases
GIS	Geographic Information System
InSAR	Interferometric Synthetic Aperture Radar
JICA	Japan International Cooperation Agency
MGB	Mines and Geosciences Bureau
MO	Manila Observatory
NAMRIA	National Mapping and Resource Information Authority
QGIS	Quantum Geographic Information System
RCP	Representative Concentration Pathway
RS	Remote Sensing
SA-OBS	Observational Gridded Dataset for Southeast Asia

SECTION I: SURFACE WATER

I.1 Basin Information

The Calategas River is a small river located in the province of Palawan. It is situated in the municipality of Narra and only has a total drainage area of 13.4 km². The climate in the Calategas River Basin is generally categorized as Type 3 under the modified Coronas classification, which has a short dry season between February to April (Figure I.1). Baseline climate data (i.e., 1976 to 2005) provided by the Manila Observatory indicate a mean annual rainfall of 1,369 mm with a monthly minimum of 27 mm in March and a maximum of 187 mm in October.

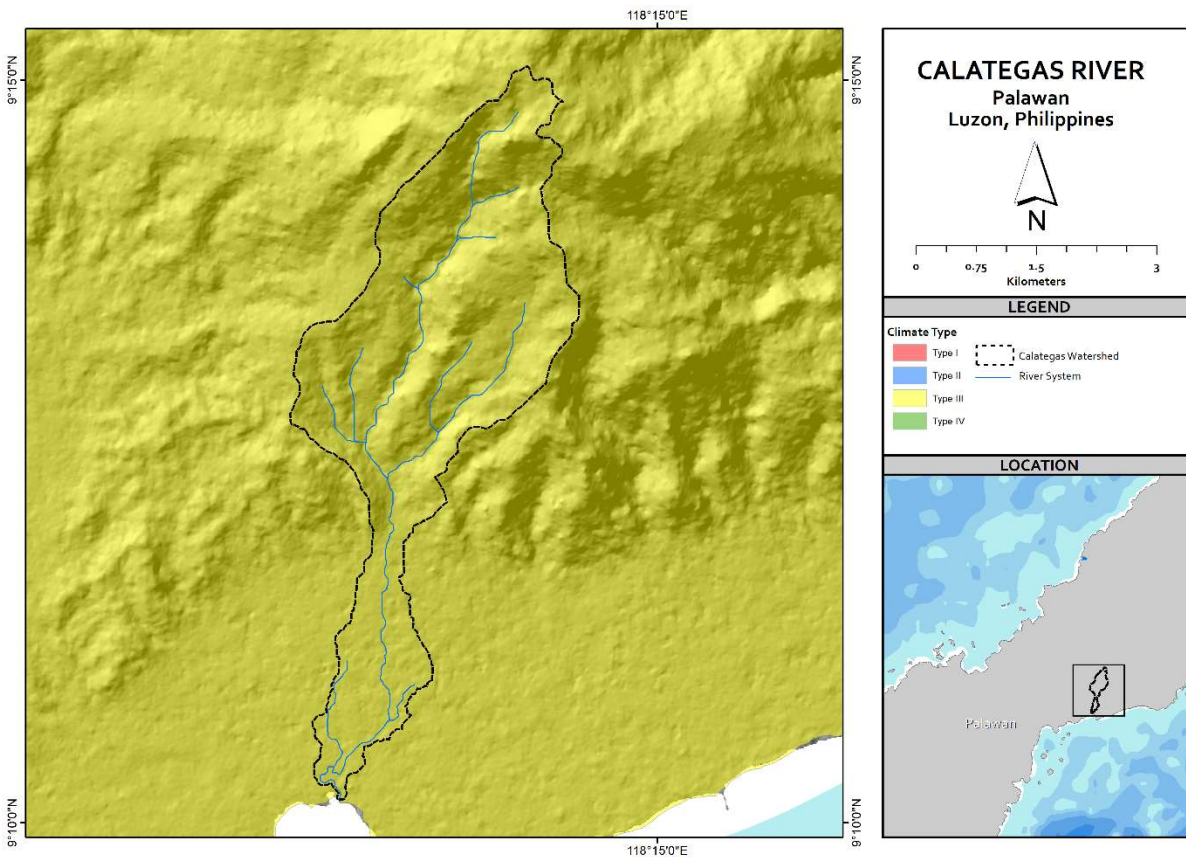


FIGURE I.1 WATERSHED AND SUB-WATERSHED DELINEATION OF THE CALATEGAS RIVER BASIN IN A RELIEF MAP. THE WHOLE WATERSHED IS UNDER THE CLIMATE TYPE 3 CLASSIFICATION

I.2 Historical Discharge

The Calategas River is not part of the list of rivers monitored by the DPWH-BRS therefore the reference gauged river used in this study is the larger Batang-Batang River which is just east of the Calategas River catchment.

The following supplementary information is published with the DPWH-BRS data:

Location: Urduja, Narra, Palawan
Station Code No.: R04B.005
Used Rating Table dated: Monday, August 19, 2019
Doc. Code: DPWH-BOD-WPD-QMSF-22

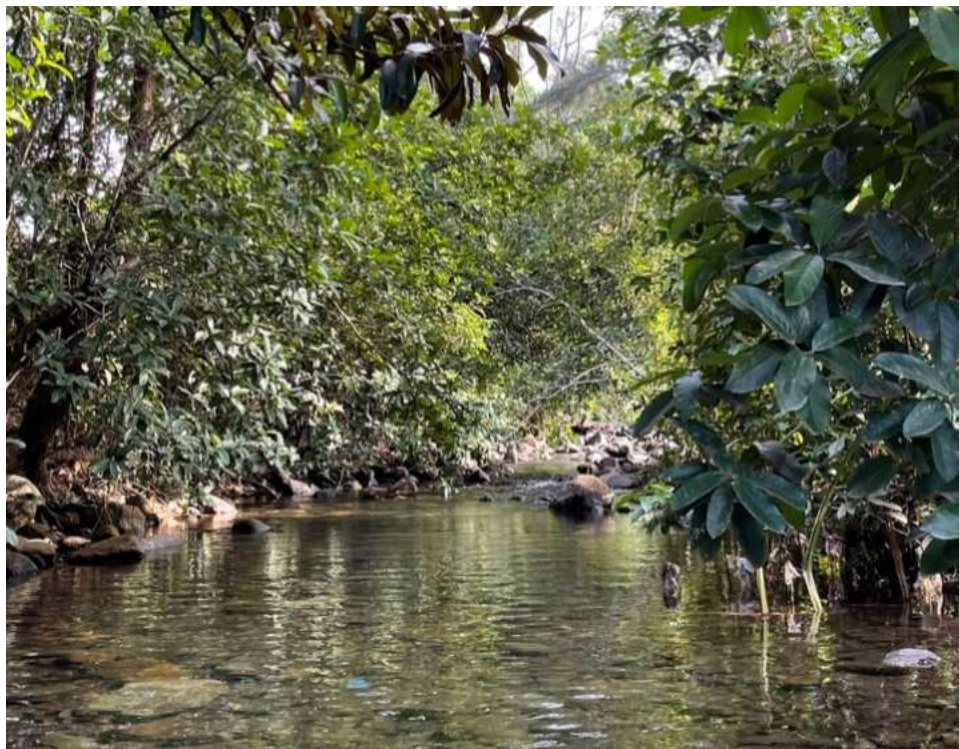


FIGURE I.2. IMAGE OF THE CALATEGAS RIVER

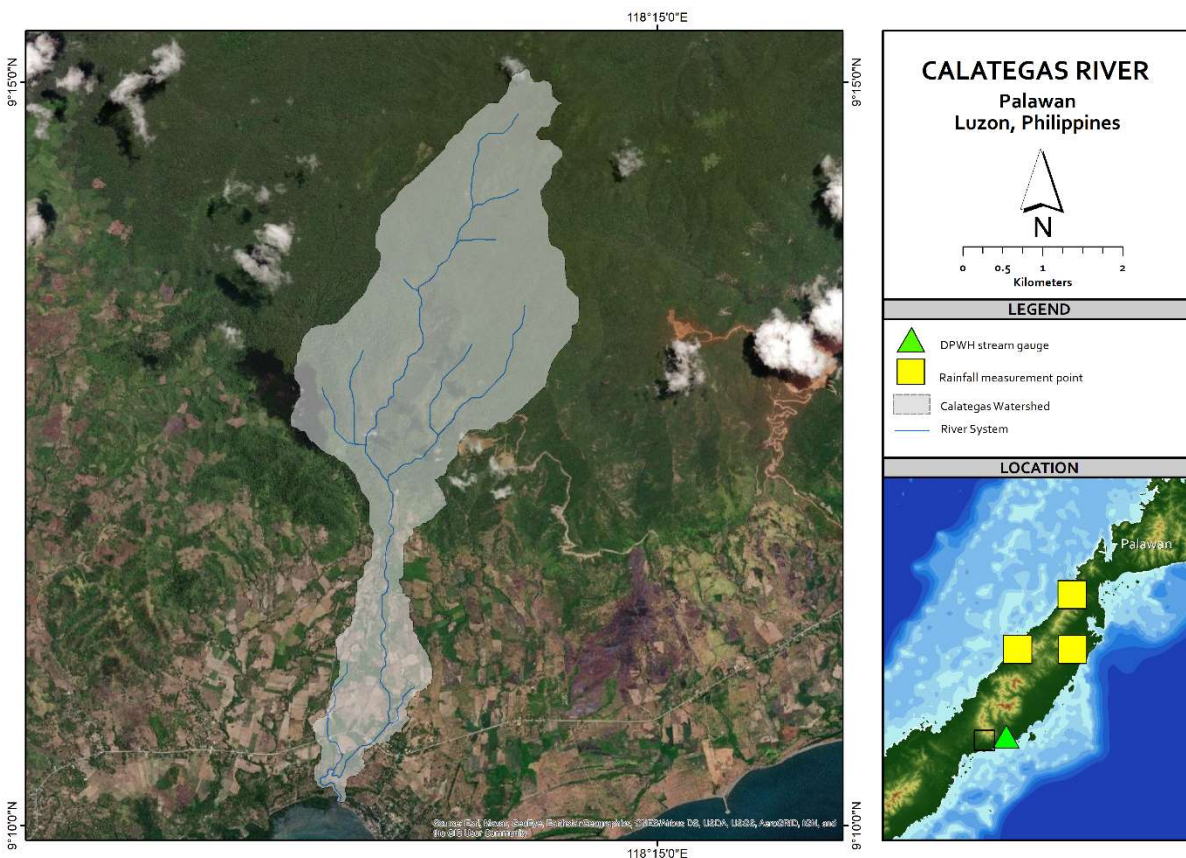


FIGURE 1.3. MAP OF THE CALATEGAS RIVER BASIN SHOWING THE LOCATION OF THE DPWH STREAM GAUGE AND THE RAINFALL MEASUREMENT POINT (PROVIDED BY THE MANILA OBSERVATORY)

On average, the lowest flows are observed in April with a mean daily discharge of $0.8 \text{ m}^3 \text{ s}^{-1}$ while the maximum flows are observed in December with a mean monthly discharge of $3.3 \text{ m}^3 \text{ s}^{-1}$ (Figure 1.4). The maximum daily flow was recorded December 2017 with $78.2 \text{ m}^3 \text{ s}^{-1}$ with a corresponding exceedance percentage (i.e., percent of time that this magnitude is equaled or exceeded) of 0.1%. Meanwhile, the lowest daily discharge was recorded in June 2010 with $0.7 \text{ m}^3 \text{ s}^{-1}$, corresponding to a 99.9% exceedance percentage.

The entire flow regime of Batang-Batang River recorded at the DPWH-BRS gauging station is shown in Figure 1.5. The median flow or the discharge that is equaled or exceeded at least 50% of the time (i.e., Q_{50}) is $1.15 \text{ m}^3 \text{ s}^{-1}$, which could be roughly considered as a proxy to the average flow of the river. High flows or discharge values that are equaled or exceeded not more than 20% of the time (i.e., $Q \geq Q_{20}$), start at $2.75 \text{ m}^3 \text{ s}^{-1}$. On the other hand, low flows (i.e., $Q \leq Q_{80}$) which is equivalent to NWRB's dependable flow is $0.55 \text{ m}^3 \text{ s}^{-1}$.

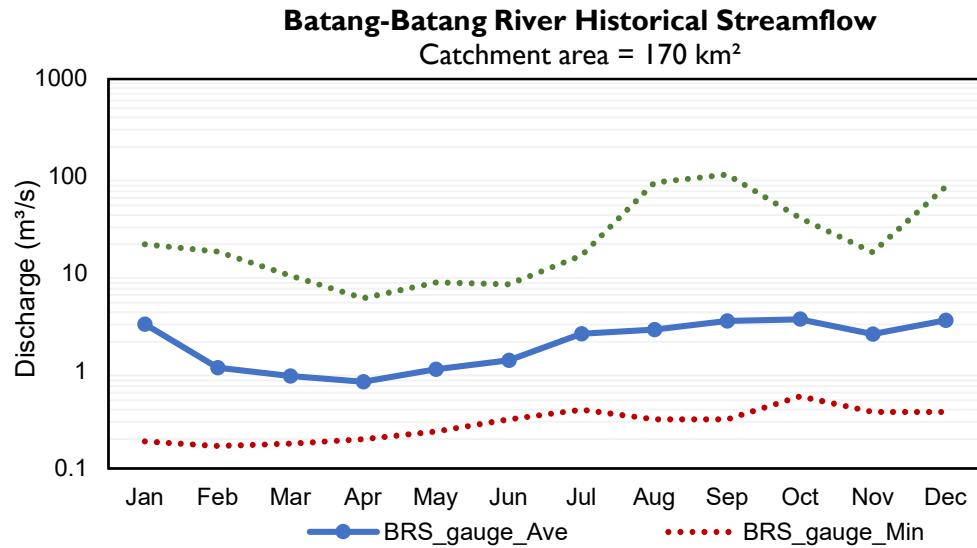


FIGURE I.4. MONTHLY FLOWS OF BATANG-BATANG RIVER AT THE DPWH-BRS GAUGING STATION

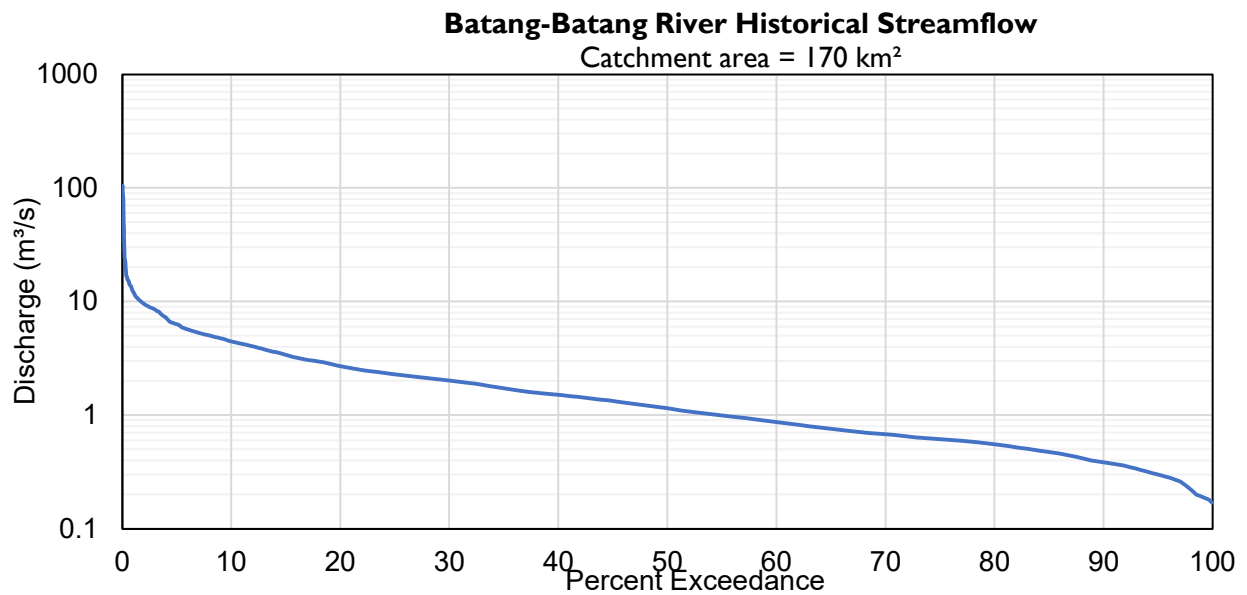


FIGURE I.5. FLOW DURATION CURVE OF BATANG-BATANG RIVER AT THE DPWH-BRS GAUGING STATION

1.3 Flow Analysis

The flow duration curve is a graphical representation of the flow regime of a stream that shows the percent of time specific discharges were equaled or exceeded during a given period. Flow duration curves (FDCs) are widely used in hydrological and engineering studies related to water resources management. It is a valuable tool for designing irrigation, hydropower, and water supply systems.

In this study, the entire range of stream discharge – from low flows to flood flows – for the whole Calategas River Basin (with a total catchment area of 13.4 km²) was projected using FDCs. The high flow section of the FDC (i.e., $Q \leq Q_{20}$) is important for hydropower and flood modeling purposes while the low flow section (i.e., $Q \geq Q_{80}$) is used to predict future flows available for water supply.

Three (3) techniques were utilized to create FDCs:

- 1) Discharge derivation by catchment area transposition;
- 2) Rainfall – discharge analysis using the rational method; and,
- 3) Multiple river correlation of rivers in Negros Occidental using regression analyses involving exponential, linear, logarithmic, and power regressions.

Rainfall data provided by the Manila Observatory and stream flow data from DPWH-BRS were used for the flow duration analysis. The details and results of the methods used are described in the succeeding sections.

Method I: Discharge derivation by catchment area transposition

Method I makes use of the catchment area transposition analysis, wherein the flow characteristics of a gauged river are related to the subject river as expressed by the equation:

$$Q = Q_{\text{gauged}} * (A/A_{\text{gauged}})$$

Where Q is the discharge of the study area ($\text{m}^3 \text{s}^{-1}$), Q_{gauged} is the recorded discharge of the gauged river ($\text{m}^3 \text{s}^{-1}$), A is the catchment area of the study area (m^2), and A_{gauged} is the catchment area of the gauged river (m^2). Ideally, the gauged river to be selected as reference should have a robust streamflow record with good data quality and should also bear similar characteristics with the study area including topography, land use, and climate. In this study, the reference river that was used is the Batang-Batang River. The results of Method I are summarized in Table I.1.

TABLE 1.1. RESULTS OF CATCHMENT AREA TRANSPOSITION (REFERENCE: BATANG-BATANG RIVER)

Date	$Q_{ref} (m^3 s^{-1})$	$Q_{Calategas} (m^3 s^{-1})$	Flow exceedance
19/12/2017	78.20	6.17	$Q_{0.1}$
23/12/2017	12.08	0.95	Q_1
31/05/2011	6.24	0.49	Q_5
06/08/2010	4.43	0.35	Q_{10}
14/08/2010	2.66	0.21	Q_{20}
30/07/2010	2.02	0.16	Q_{30}
28/08/2010	1.50	0.12	Q_{40}
14/06/2010	1.15	0.09	Q_{50}
28/04/2010	0.86	0.07	Q_{60}
08/04/2010	0.67	0.05	Q_{70}
18/03/2010	0.55	0.04	Q_{80}
30/11/2011	0.38	0.03	Q_{90}
15/01/2012	0.30	0.02	Q_{95}
17/01/2012	0.19	0.01	Q_{99}
18/02/2015	0.17	0.01	$Q_{99.9}$

Method 2: Rainfall – discharge analysis using the rational method

Method 2 utilizes the Rational equation to estimate discharge at the site given its catchment area and precipitation data:

$$Q = ciA$$

Where Q is the discharge of the study area ($m^3 s^{-1}$), c is the runoff coefficient, i is the rainfall intensity ($mm\ month^{-1}$) and A is the catchment area (m^2). Originally, the equation is designed to calculate peak discharge at a certain rainfall intensity, usually in $mm\ hr^{-1}$, wherein the time of concentration is factored in. In this study, the equation is utilized in a straightforward manner - using total monthly precipitation instead to allow direct derivation of mean monthly discharge without the need for a time of concentration.

Monthly rainfall data from 1976 to 2005 was prepared by the Manila Observatory using observed data from DOST-PAGASA and SA-OBS version 2. Average values from the gridded rainfall measurement points were used in this method. Runoff coefficients of 1.0 and 0.2 were selected for January to April and May to December, respectively, from the reference range of 0.55-0.70 for Philippine watersheds with steep gullies and without heavy timber (Table 1.2), considering the general topography of the river basin. The influence of other catchment characteristics (e.g., slope, soil type, land use) and hydrological processes (e.g., infiltration, evapotranspiration) are implicitly accounted for in the runoff coefficient. It is important to note that the adopted approach is highly simplified and is demonstrated primarily for the purpose of comparison with the results of other methods. Nevertheless, this

technique is useful in discharge estimation using coarse-resolution datasets/measurements like in the current study. The results of Method 2 are summarized in Table I.3.

TABLE I.2. RUNOFF COEFFICIENTS USED IN THE PHILIPPINES PUBLISHED IN THE DESIGN GUIDELINES CRITERIA AND STANDARDS, VOL. I (MPWH, 1987)

Surface Characteristics	Runoff coefficient
Lawn, gardens, meadows, and cultivated lands	0.05-0.25
Parks, open spaces including unpaved surfaces and vacant lots	0.20-0.30
Suburban districts with few buildings	0.25-0.35
Residential districts not densely built	0.30-0.55
Residential districts densely built	0.50-0.75
Watershed having steep gullies and not heavily timbered	0.50-0.70
Watershed having moderate slope, cultivated, and heavily timbered	0.45-0.55
Suburban areas	0.34-0.45
Agricultural areas	0.15-0.25

TABLE I.3. RESULTS OF THE RAINFALL-DISCHARGE ANALYSIS FOR THE CALATEGAS RIVER BASIN

Year	Month	Mean precipitation (mm)	Q (m ³ s ⁻¹)	Flow Exceedance
1986	8	265.9	0.28	Q ₁
1995	7	219.2	0.23	Q ₅
2005	10	197.3	0.20	Q ₁₀
1980	12	120.1	0.19	Q ₂₀
1994	8	164.6	0.17	Q ₃₀
1976	8	152.4	0.16	Q ₄₀
2001	12	91.2	0.14	Q ₅₀
1980	5	112.5	0.12	Q ₆₀
1997	4	48.5	0.08	Q ₇₀
1978	4	31.4	0.05	Q ₈₀
2001	3	19.1	0.03	Q ₉₀
1995	2	15.4	0.02	Q ₉₅
1980	3	8.2	0.01	Q ₉₉
1976	3	7.1	0.01	Q _{99.9}

Method 3: Multiple River correlation of rivers in Palawan using regression analyses

Method 3 adopts multi-river regression analyses wherein the discharge and drainage area of gauged rivers are correlated using different regression techniques such as linear, logarithmic, power, and exponential, and are then used to derive the flow characteristics of the subject river. Ideally, the rivers of reference should (a) be in close proximity to the study area (i.e., within a 50-km radius), (b) have similar climate and catchment characteristics, (c) have clearly defined catchment areas and consistent streamflow records, and (d) have lower and higher catchment areas compared with the study area. However, it is challenging, if not impossible to find reference rivers that fulfill all the qualifications. In this study, three rivers in Palawan were deemed most suitable to use as reference with respect to the abovementioned criteria: Iraan River, Caramay River, and Batang-Batang River (Table I.4). The coefficient of determination (r^2) was calculated for each analysis. Subsequently, this metric was used to assess the precision of the predicted discharge to the regression trends exhibited by the reference rivers, wherein $r^2 \geq 0.7$ was considered as good correlation. The results of Method 3 are summarized in Table I.5.

TABLE I.4. LIST OF PALAWAN ISLAND RIVERS USED AS REFERENCE IN THE REGRESSION ANALYSES

Reference	Coordinates	Location	Catchment area	Streamflow data record
Iraan	10-24-48.94, 119-22-25.21	Brgy. Sto Tomas, Roxas	11.37 km ²	2010-2014, 2017
Caramay	10-10-59.15, 119-13-29.63	Brgy. Caramay, Roxas	94.62 km ²	2010 - 2017
Batang-Batang	9-13-35.92, 118-19-27.65	Brgy. Urduja, Narra	170 km ²	2010 - 2018

TABLE I.5. RESULTS OF THE REGRESSION ANALYSES FOR THE CALATEGAS RIVER BASIN. VALUES IN RED DENOTE $R^2 < 0.7$

Flow exceedance	Q (m ³ s ⁻¹)			
	Linear	Logarithmic	Exponential	Power
Q _{0.1}	78.28	74.08	77.30	72.46
Q ₁	13.62	14.41	13.08	14.00
Q ₅	2.16	2.84		7.40
Q ₁₀	0.79	1.15	1.03	1.23
Q ₂₀	0.42	0.57	0.58	0.63
Q ₃₀	0.25	0.34	0.36	0.38
Q ₄₀	0.21	0.27	0.29	0.30
Q ₅₀	0.19	0.24	0.25	0.26

Q_{60}	0.17	0.21	0.21	0.22
Q_{70}	0.16	0.18	0.18	0.18
Q_{80}	0.11	0.12	0.13	0.13
Q_{90}	0.08	0.08	0.08	0.08
Q_{95}	0.06	0.06	0.06	0.06
Q_{99}	0.03	0.02		
$Q_{99.9}$	0.05	-0.09	0.07	0.03

The flow regime projections for the Calategas River Basin using various discharge estimation techniques are shown in Figure I.6. Due to the small catchment of Calategas River, the most viable technique to use is the watershed transposition method wherein the reference river used is beside it (Batang-Batang River). High flows ($Q \geq Q_{20}$) exhibited high precision and are expected to start at $0.2 \text{ m}^3 \text{ s}^{-1}$. Median values are at $0.09 \text{ m}^3 \text{ s}^{-1}$ while low flows ($Q \leq Q_{80}$) equivalent to NWRB's dependable flow is at $0.05 \text{ m}^3 \text{ s}^{-1}$.

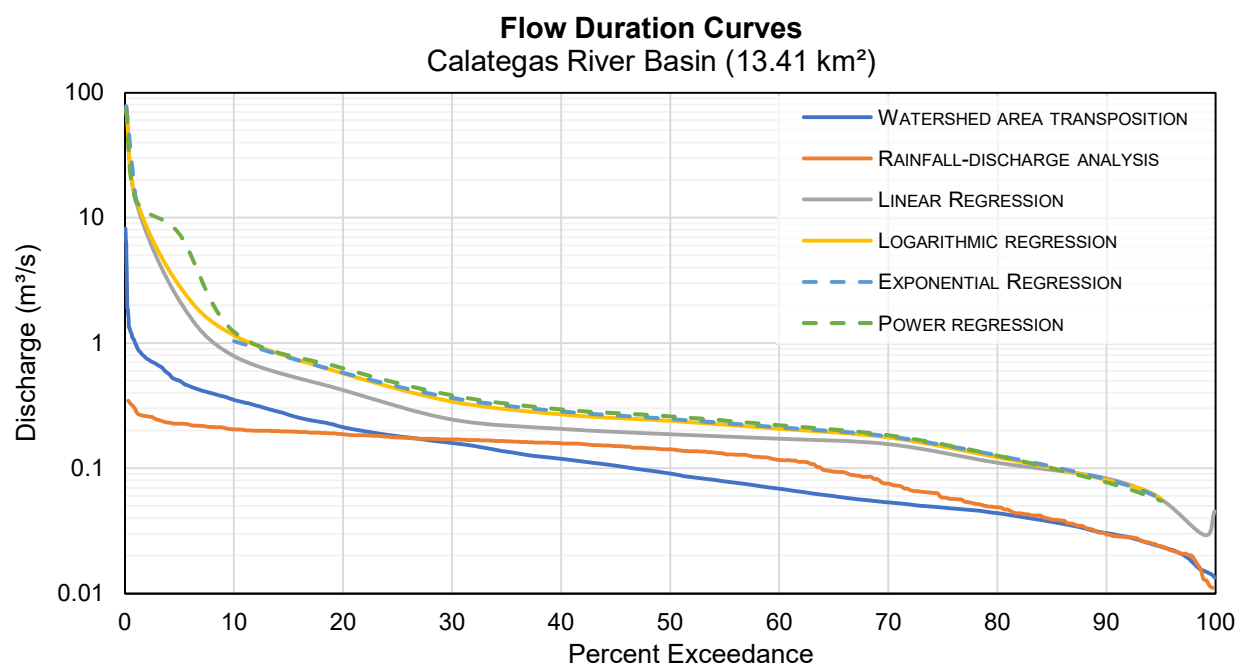


FIGURE I.6. FLOW DURATION CURVES FOR THE CALATEGAS RIVER BASIN AS PREDICTED BY VARIOUS ESTIMATION TECHNIQUES

There is a single registered permittee got the extraction of water from the Calategas River. This is under the name of the Calategas Barangay Irrigation Association with a permitted volume of $102 \text{ liters s}^{-1}$.

TABLE I.6. REGISTERED WATER EXTRACTION PERMITS WITH THE NWRB

Province	LGU	Permit	Grantee	Location	Source	Lat	Long	Granted (LPS)	Purpose	Grant Date
PALAWAN	NARRA	003986	CALATEGAS BRGY.	CALATEGA	CALATEGAS R.	9.1978	118.2183	102	IRRIGATIC	7/24/1978

1.4 Projection of future flows under different climate scenarios

The Intergovernmental Panel on Climate Change has developed different future scenarios to simulate the impact of greenhouse gas (GHG) emissions on climate. These scenarios are described by the representative concentration pathways (RCP) that are further classified based on the level of end-of-century radiative forcing. Two scenarios were used in this study: (a) RCP 4.5 (representing 4.5 W/m² forcing increase relative to pre-industrial conditions) and (b) RCP 8.5 (representing 8.5 W/m² forcing increase). In other words, RCP 4.5 is used to predict changes in the climate assuming intermediate GHG emissions, while RCP 8.5 is used to model high GHG effects.

The Manila Observatory has provided bias-adjusted monthly temperature and precipitation values under these two scenarios. Rainfall-discharge analysis was conducted for two future periods, from 2006 to 2035 (i.e., 2020s) and from 2036 to 2065 (i.e., 2050s). Potential hydrological impacts can then be assessed by comparing the baseline flows to the predicted future flows.

The future flow exceedance values and the percentage change for the Calategas River Basin are reflected in Table 1.7. Values reflected in the table are rounded off; the percent changes are based on the more accurate baseline and projected values. Flows in the RCP 4.5 and RCP 8.5 scenario for the 2020s are mostly expected to decrease or remain unchanged, except at Q_1 (4% 7%, respectively). In the 2050s, both the RCP 4.5 and RCP 8.5 scenarios predict considerable flow reduction across the flow regime, except for Q_{95} to $Q_{99.9}$ for RCP 4.5 and Q_{95} to Q_{99} for RCP 8.5 (0%).

Note that Table 1.7 only uses the flow exceedance measurements from the rainfall-discharge technique which is directly tied to changes in rainfall volume. Rainfall volume change in turn is what is provided by the various climate change projections. In some cases, the flow exceedances in Table 1.7 (e.g. Q_{80}) will not match with the consensus values discussed in the previous section that included values derived using other techniques particularly the area transposition and the multiple watershed regression analyses. For planning purposes, we report the higher consensus value for high flow conditions (Q_{20}), the full range of median values (Q_{50}), and the lower consensus value for low flow conditions (Q_{80}).

TABLE I.7. FLOW EXCEEDANCE VALUES (IN $\text{M}^3 \text{S}^{-1}$) OF FUTURE FLOWS (2006-2035 AND 2036-2065) WITH RESPECT TO THE BASELINE (1976-2005). VALUES IN RED INDICATE NEGATIVE CHANGE FROM THE BASELINE VALUES

Flow exceedance	1976-2005	2006-2035				2036-2065			
	Baseline	RCP 4.5	Change	RCP 8.5	Change	RCP 4.5	Change	RCP 8.5	Change
Q_1	0.28	0.29	4%	0.30	7%	0.25	-11%	0.26	-7%
Q_5	0.23	0.23	0%	0.23	0%	0.21	-9%	0.21	-9%
Q_{10}	0.20	0.20	0%	0.20	0%	0.19	-5%	0.19	-5%
Q_{20}	0.19	0.18	-5%	0.17	-11%	0.16	-16%	0.17	-11%
Q_{30}	0.17	0.16	-6%	0.16	-6%	0.15	-12%	0.15	-12%
Q_{40}	0.16	0.15	-6%	0.14	-13%	0.13	-19%	0.13	-19%
Q_{50}	0.14	0.13	-7%	0.13	-7%	0.12	-14%	0.11	-21%
Q_{60}	0.12	0.11	-8%	0.11	-8%	0.09	-25%	0.09	-25%
Q_{70}	0.08	0.05	-38%	0.05	-38%	0.05	-38%	0.05	-38%
Q_{80}	0.05	0.03	-40%	0.03	-40%	0.03	-40%	0.03	-40%
Q_{90}	0.03	0.02	-33%	0.02	-33%	0.02	-33%	0.02	-33%
Q_{95}	0.02	0.02	0%	0.02	0%	0.02	0%	0.02	0%
Q_{99}	0.01	0.01	0%	0.01	0%	0.01	0%	0.01	0%
$Q_{99.9}$	0.01	0.01	0%	0.00	-100%	0.01	0%	0.01	0%

The predicted monthly flow statistics (average, minimum, and maximum discharge) in the 2020s and 2050s in both RCP scenarios are illustrated in Figures I.7 to I.10. In the RCP 4.5 scenario, reduced average flows are projected for most months during the 2020s, particularly in January ($0.05 \text{ m}^3 \text{ s}^{-1}$ to $0.03 \text{ m}^3 \text{ s}^{-1}$) and the dry months of March ($0.04 \text{ m}^3 \text{ s}^{-1}$ to $0.03 \text{ m}^3 \text{ s}^{-1}$) and April ($0.06 \text{ m}^3 \text{ s}^{-1}$ to $0.04 \text{ m}^3 \text{ s}^{-1}$) where changes of -40%, -25%, and -33% from the baseline of the respective months are calculated. The highest decreases in average flows for the 2050s are also projected in the same months – January ($0.05 \text{ m}^3 \text{ s}^{-1}$ to $0.03 \text{ m}^3 \text{ s}^{-1}$), March ($0.04 \text{ m}^3 \text{ s}^{-1}$ to $0.02 \text{ m}^3 \text{ s}^{-1}$), and April ($0.06 \text{ m}^3 \text{ s}^{-1}$ to $0.03 \text{ m}^3 \text{ s}^{-1}$), representing 40%, 50%, and 50% reductions from the respective baseline values of each month.

The RCP 8.5 scenario also projects decreased flows for most of the months, with the abovementioned months also projected to have the highest reduction in average flows. For the 2020s, January ($0.05 \text{ m}^3 \text{ s}^{-1}$ to $0.03 \text{ m}^3 \text{ s}^{-1}$), March ($0.04 \text{ m}^3 \text{ s}^{-1}$ to $0.02 \text{ m}^3 \text{ s}^{-1}$), and April ($0.06 \text{ m}^3 \text{ s}^{-1}$ to $0.03 \text{ m}^3 \text{ s}^{-1}$) represent 40%, 50%, and 50% reductions from the respective baseline values of each month. Meanwhile, for the 2050s, the highest projected reductions are in January ($0.05 \text{ m}^3 \text{ s}^{-1}$ to $0.03 \text{ m}^3 \text{ s}^{-1}$), February ($0.03 \text{ m}^3 \text{ s}^{-1}$ to $0.02 \text{ m}^3 \text{ s}^{-1}$), and April ($0.06 \text{ m}^3 \text{ s}^{-1}$ to $0.03 \text{ m}^3 \text{ s}^{-1}$) representing changes of 40%, 33%, and 50% from the respective baseline values of each month. The monthly discharge values (average, minimum, maximum) for the baseline and RCP climate change scenarios are shown in Table I.8.

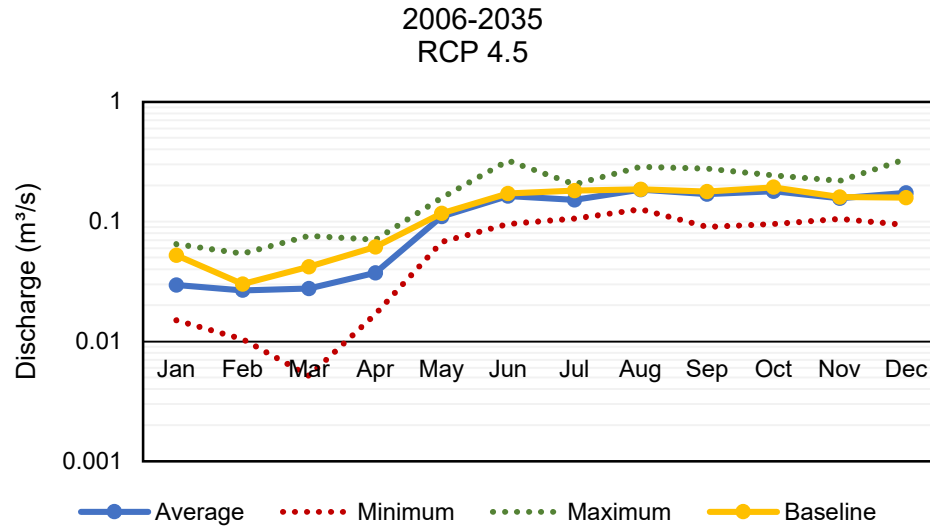


FIGURE I.7. PREDICTED MONTHLY FLOWS FROM 2006 TO 2035 FOR THE CALATEGAS RIVER BASIN USING THE RCP 4.5 SCENARIO

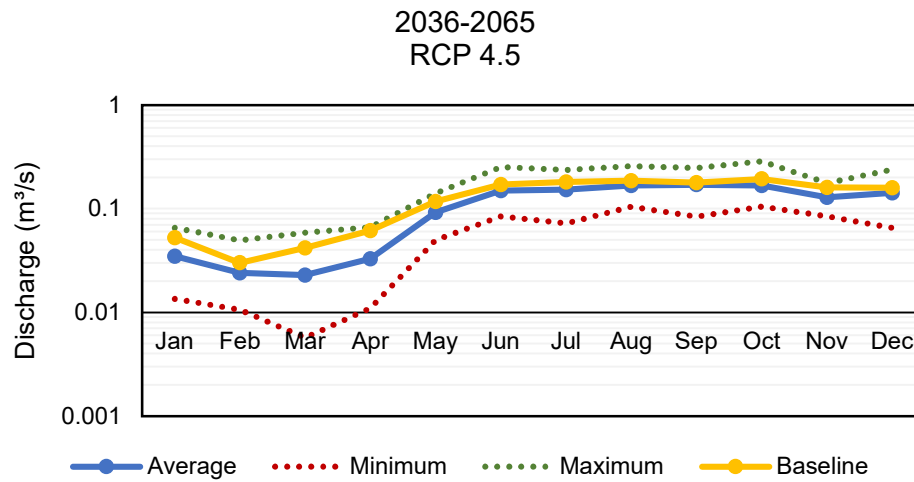


FIGURE I.8. PREDICTED MONTHLY FLOWS FROM 2036 TO 2065 FOR THE CALATEGAS RIVER BASIN USING THE RCP 4.5 SCENARIO

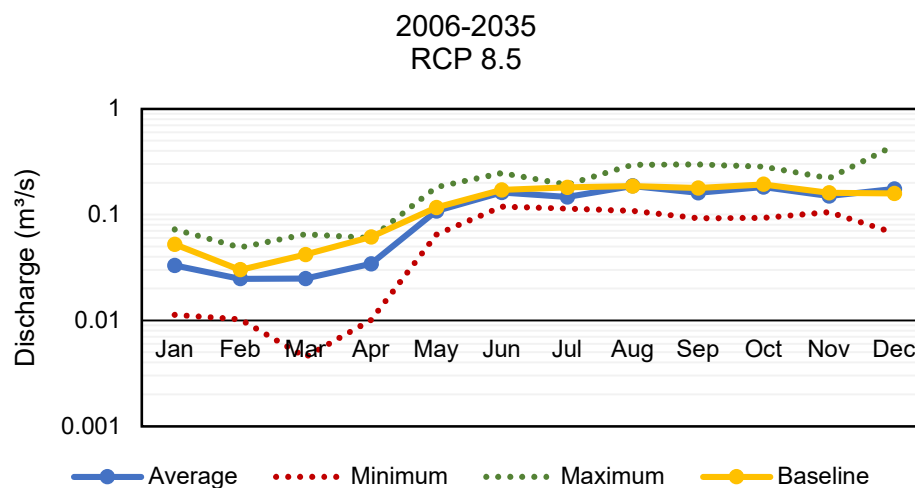


FIGURE I.9. PREDICTED MONTHLY FLOWS FROM 2006 TO 2035 FOR THE CALATEGAS RIVER BASIN USING THE RCP 8.5 SCENARIO

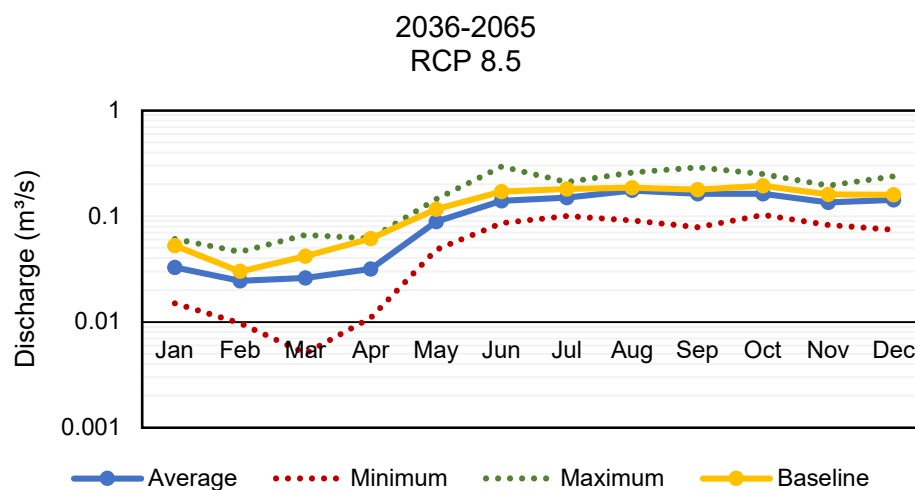


FIGURE I.10. PREDICTED MONTHLY FLOWS FROM 2036 TO 2065 FOR THE CALATEGAS RIVER BASIN USING THE RCP 8.5 SCENARIO

TABLE 1.8. MONTHLY DISCHARGE VALUES FOR BASELINE, RCP 4.5, AND RCP 8.5 CLIMATE CHANGE SCENARIOS

Month	Baseline			RCP 4.5						RCP 8.5					
	1976-2005			2006-2035			2036-2065			2006-2035			2036-2065		
	Ave	Min	Max	Ave	Min	Max	Ave	Min	Max	Ave	Min	Max	Ave	Min	Max
Jan	0.05	0.02	0.12	0.03	0.02	0.06	0.03	0.01	0.07	0.03	0.01	0.07	0.03	0.02	0.06
Feb	0.03	0.02	0.06	0.03	0.01	0.05	0.02	0.01	0.05	0.02	0.01	0.05	0.02	0.01	0.05
Mar	0.04	0.01	0.11	0.03	0.01	0.08	0.02	0.01	0.06	0.02	0.00	0.07	0.03	0.01	0.07
Apr	0.06	0.03	0.13	0.04	0.02	0.07	0.03	0.01	0.07	0.03	0.01	0.06	0.03	0.01	0.06
May	0.12	0.07	0.16	0.11	0.07	0.16	0.09	0.05	0.14	0.11	0.06	0.18	0.09	0.05	0.15
Jun	0.17	0.12	0.26	0.16	0.10	0.32	0.15	0.08	0.25	0.16	0.12	0.25	0.14	0.09	0.30
Jul	0.18	0.14	0.24	0.15	0.11	0.21	0.15	0.07	0.24	0.15	0.11	0.19	0.15	0.10	0.21
Aug	0.19	0.14	0.28	0.19	0.13	0.29	0.17	0.10	0.26	0.19	0.11	0.30	0.18	0.09	0.26
Sep	0.18	0.09	0.26	0.17	0.09	0.28	0.17	0.08	0.25	0.16	0.09	0.30	0.16	0.08	0.29
Oct	0.19	0.13	0.26	0.18	0.10	0.24	0.17	0.10	0.29	0.18	0.09	0.28	0.16	0.10	0.25
Nov	0.16	0.09	0.25	0.16	0.11	0.22	0.13	0.08	0.18	0.15	0.11	0.22	0.13	0.08	0.19
Dec	0.16	0.10	0.35	0.17	0.09	0.33	0.14	0.07	0.24	0.17	0.07	0.45	0.14	0.07	0.24

SECTION 2: GROUNDWATER

2.1 Potential Groundwater Recharge Areas

Groundwater recharge, or the process that describes the flow of water from surface sources (e.g., direct from precipitation, streamflow) to the aquifers deep beneath the ground, is still a significant source of freshwater (30%) around the world. In the Philippines, the average proportion of precipitation that ultimately infiltrates as groundwater is between 15-25%, primarily varying based on the prevailing geology and land cover of a particular area. In alluvial areas in humid tropics, the proportion of rainfall ultimately infiltrating shallow aquifers may be as high as 40-45% (Kotchoni et al., 2018).

Although a substantial amount of freshwater is stored as groundwater, finding and developing this resource require significant investments in the exploration of potential groundwater sources. Numerous techniques have been developed over the years to directly and indirectly measure the amount of groundwater entering aquifers. As Yeh et al. (2009) pointed out, on-site hydrogeological investigations and geophysical surveys generally downplay large-scale processes contributing to the dynamics of groundwater recharge. Most of the time, these and other similar techniques rely on just a single (or a few) parameter to estimate recharge.

We identified the geology of the area, topographic slope, drainage density, and land cover as the controlling variables influencing groundwater recharge as used and verified by Shaban et al. (2006), Yeh et al. (2009), Kourgialas and Karatzas (2015), Deepa et al. (2016), and Senanayake et al. (2016). Accordingly, we adopted their approach in using Geographic Information System (GIS) and Remote Sensing (RS) to integrate these variables.

These areas were delineated on the basis of four factors: drainage density, slope gradient, surface lithology, and land cover. The weight of these factors are based on the influence they have on one another. Figures 2.1 and 2.2 illustrate the flowchart representing the methodology of this investigation and the inter-influence of the factors used in determining their corresponding weights. Each primary variable was assigned a numerical weight, signifying its relative importance in promoting infiltration and percolation of water towards the ground. Geology was assigned 34%, land cover with 25%, slope with 25%, and drainage density with 16%; with these weight distribution modified and adapted from Shaban et al., (2006) and Yeh et al., (2009). Subclasses of each primary variable were also allocated with weights according to their likely influence on groundwater recharge.

Zones were classified whether they have very low, low, moderate, high, or very high potential for groundwater recharge. For example, around 40-50% of the total amount of recharge are capable of infiltrating towards the aquifers in very high recharge areas. Conversely, in poor recharge areas less than 5% of estimated recharge is expected to ultimately feed the aquifers. Potential recharge of the areas were classified into five zones: very low recharge for areas with values of 0-20; low recharge areas (20-40) moderate recharge for areas with values of 40-60; good recharge for areas with values of 60-80; and values between 80-100 for very high recharge zones.

The points of these factors were identified by classifying and ranking them on the basis of their influence on the groundwater potential. Using spatial analysis, the factors were then added together and the potential groundwater recharge zones were demarcated. For the determination of the weights of factors, major and minor inter-influences were compared. A major effect or influence equates to one point, while a minor effect or influence equates to a half point. From these the drainage density factor has a weight of 1, lithology has a weight of 2, and both land cover and slope gradient have weights of 1.5. Normalizing these to a hundred points, these weights may be obtained: 16 for drainage density, 34 for lithology, 25 for land cover, and 25 for slope gradient.

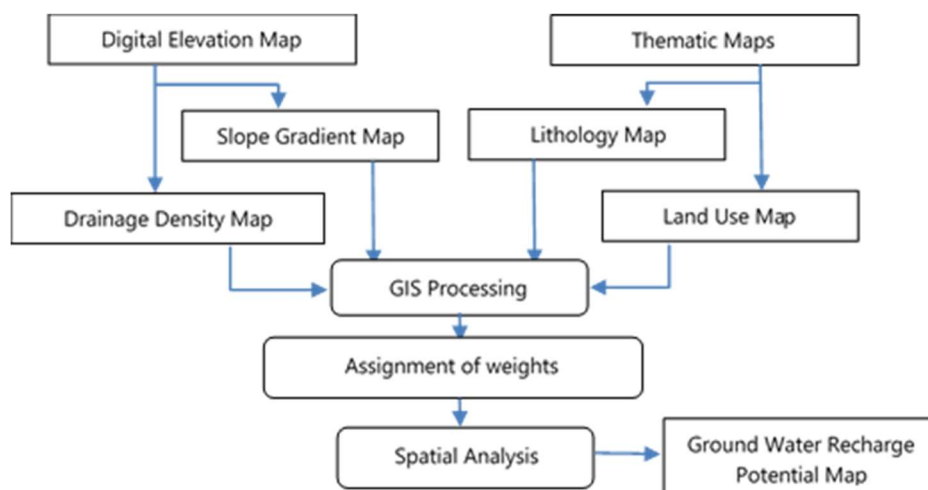


FIGURE 2.1. FLOWCHART FOR DETERMINING POTENTIAL GROUNDWATER RECHARGE ZONES

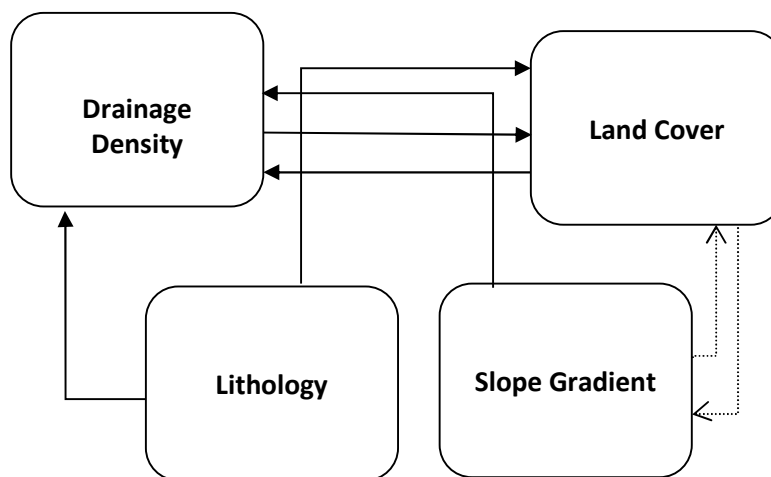


FIGURE 2.2. RELATIONSHIP AMONG VARIABLES (SOLID LINES INDICATE MAJOR EFFECTS, WHILE DASHED LINES REPRESENT MINOR EFFECTS)

A. Drainage Density

Drainage Density is defined as the number of channels in a given sub-catchment per unit area. It is a measure of how well or poorly drained a given sub-catchment is. This has bearing on planning purposes such as delineating areas where groundwater infiltration occurs. The same areas may also be flood-prone areas during the rainy season. Its value may be calculated as the quotient of total length of a channel in a basin and the area of the catchment basin. For this report, drainage density was computed as the ratio between the total length (m) of streams and the total area (sq. km.) of a sub-catchment. The drainage density map for the Calategas River Basin is not available.

B. Slope Gradient

The slope gradient influences groundwater recharge by dictating the behavior of rainfall as it flows above ground. As local rainfall is the main source of recharge, slope gradient determines the amount of water that effectively infiltrates the ground. Steep slopes result to little recharge because it causes rainwater to become runoff. On the other hand, gentler slope gradients provide enough time for water to eventually infiltrate the surface and reach the water table.

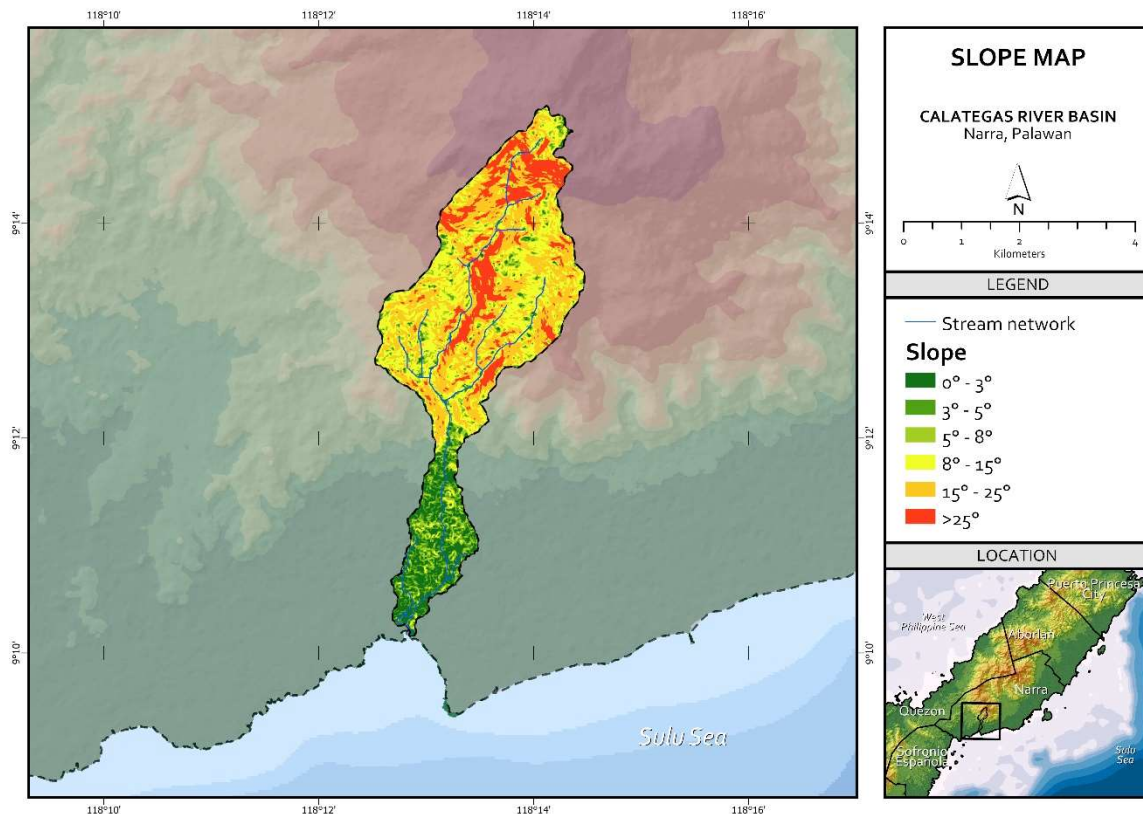


FIGURE 2.3. SLOPE MAP OF THE CALATEGAS RIVER BASIN

Slope gradient (in degrees; Figure 2.3) was processed from the 5-meter resolution Interferometric Synthetic Aperture Radar (InSAR) digital elevation model using the slope function of QGIS. Hydrologic

and topographic corrections, such as filling in sinks, were done before processing the data into its derivative products.

C. Land Cover

The land cover of a particular area partly determines the amount of infiltration of surface water to the water table. The land cover describes the extent of concreted residential areas, the type and extent of vegetation cover, the type of soil deposits, and the presence or absence of any water bodies. Concreted or built-up areas are zones with the least amount of infiltration due to the inability of surface water to penetrate concrete. On the other hand, areas with rich vegetation allow high amounts of infiltration due to the fact that the roots of these plants loosen the overlying rocks and soil- making it easier for water to percolate towards the water table. The type of vegetation present is also an important factor since vegetation with deep roots provide stronger infiltration as compared to vegetation with shallow roots. The amount of foliage in trees also affect recharge potential. Areas with thick foliage may provide a buffer for rainfall due to the droplets being intercepted by plant leaves. Thus, the underlying soil is provided with more time to soak up the rainfall. Furthermore, vegetation with a large area coverage prevents the direct evapotranspiration of water from the soil.

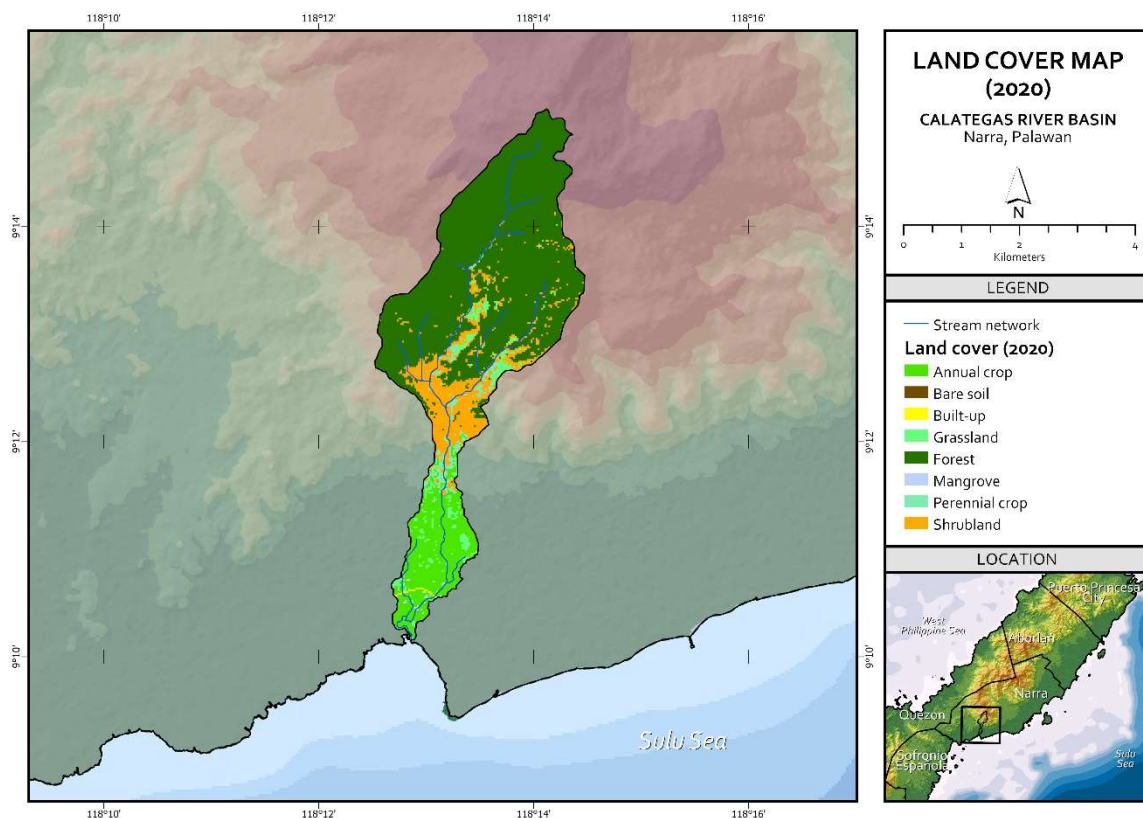


FIGURE 2.4. LAND COVER MAP (2020) OF THE CALATEGAS RIVER BASIN

The 2020 land cover of the Calategas River Basin (Figure 2.4) used here were provided by USAID Safe Water, using Landsat 8 images after radiometric calibration and correction.

D. Lithology

The lithology of the underlying rocks also influences the rate of infiltration to groundwater. Factors affecting the ranking of different lithologies are its porosity and permeability. In general, for sedimentary rocks, a larger grain size means a higher permeability. Meanwhile, for igneous and metamorphic rocks, the permeability is determined by the susceptibility of the rock to break or fracture- creating spaces within the rock for groundwater to fill up.

The lithology of the river basin (Figure 2.5) was delineated and digitized from existing geologic maps of National Mapping and Resource Information Authority (NAMRIA), the Mines and Geosciences Bureau (MGB), and based on the more recent geologic maps of Neri et al. (2013). Weights for each lithologic unit were assigned based on the geologic age and texture of each unit. Thus, Quaternary alluvium and sandstones formed during Miocene were expected to facilitate infiltration and recharge of precipitation than claystones and igneous intrusions from Cretaceous, for example.

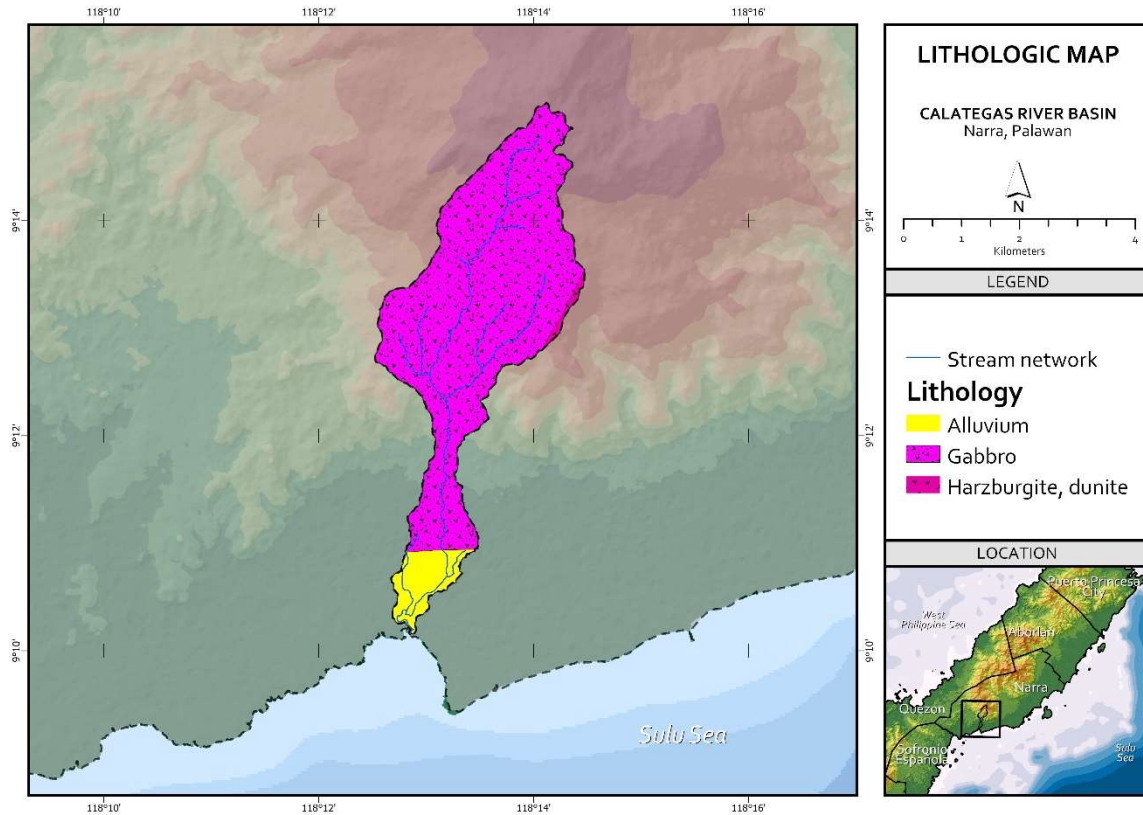


FIGURE 2.5. LITHOLOGIC MAP OF THE CALATEGAS RIVER BASIN

2.2 Determination of Potential Groundwater Recharge Areas

Low to high recharge areas are found in the Calategas River Basin. Like many rivers in Palawan, the upstream portion of the Calategas River is underlain by crystalline igneous rocks with very low permeability. Only in the wide floodplains in the midstream and downstream portion of the river that are underlain by recent river alluvium do we find moderate to high recharge areas. It is because of these that we do not expect extensive groundwater resources in the catchment. Rainfall infiltration will only be at 12% of the volume of rainfall.

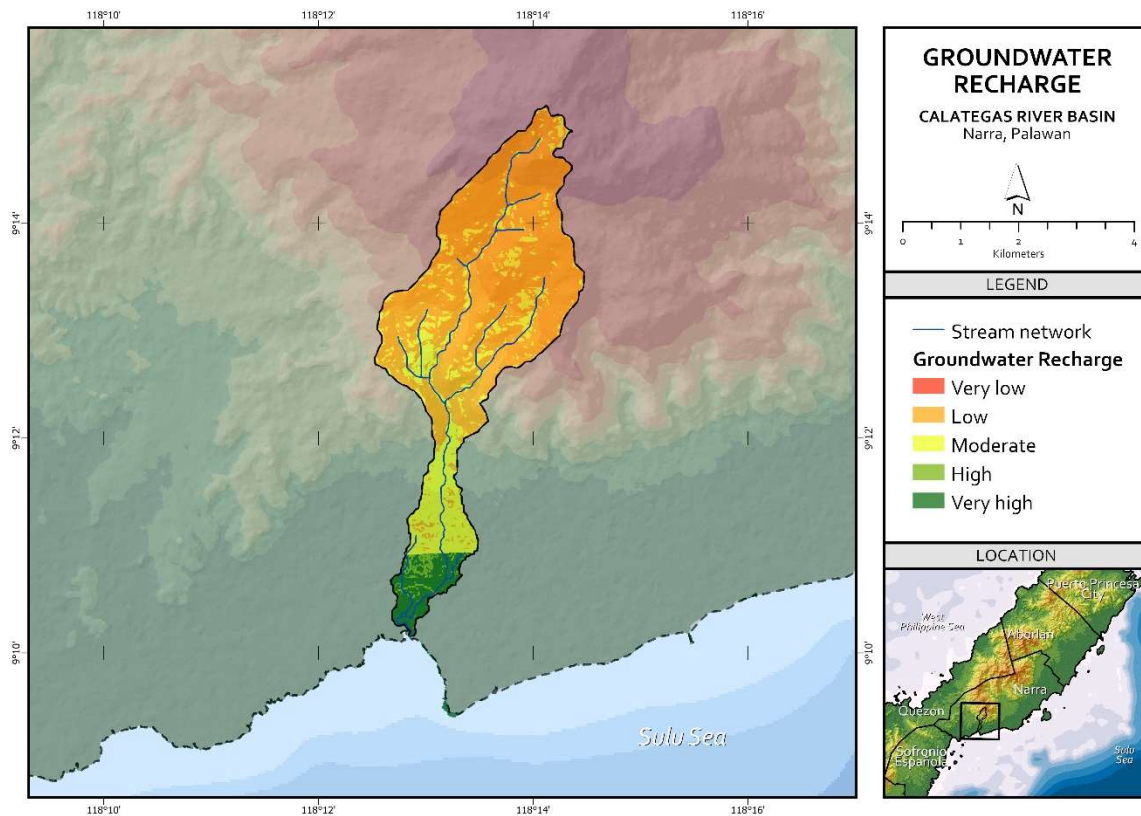


FIGURE 2.6. GROUNDWATER RECHARGE POTENTIAL MAP OF THE CALATEGAS RIVER BASIN

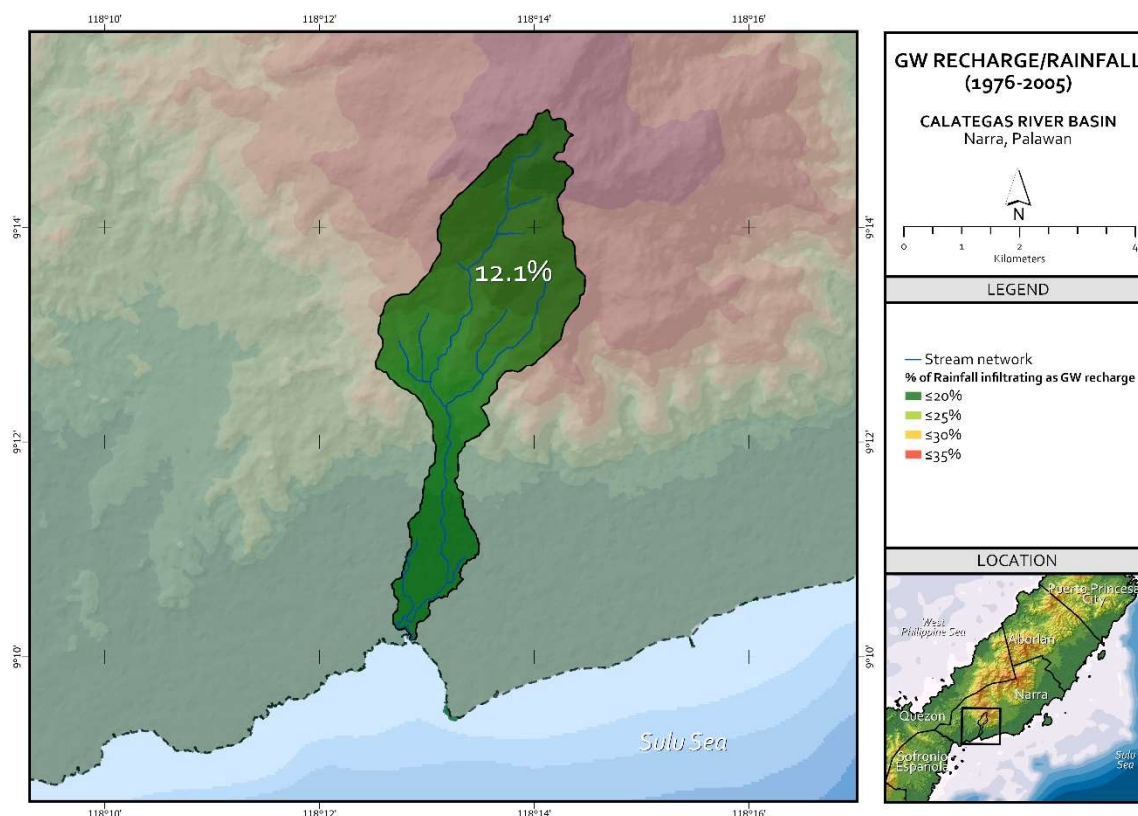


FIGURE 2.7. PROPORTION OF RAINFALL POTENTIALLY INFILTRATING AS GROUNDWATER RECHARGE IN CALATEGAS RIVER BASIN. THE LABEL (12.1%) INDICATES THE AVERAGE PROPORTION OF RAINFALL INFILTRATING AS GROUNDWATER RECHARGE DURING THE BASELINE YEARS (1976-2005)

Between the baseline years of 1976 to 2005, the Calategas River Basin received around 1,369.3 mm of rainfall annually, typical of a Type 3 climate. Based on the 2 scenarios of climate projections: RCP 4.5 (stabilization scenario) and RCP 8.5 (high-emissions/business as usual scenario) for the years 2006-2035 and 2036-2065, the expected volume of recharge is estimated to decrease by up to 13.5% at the end of 2065 (Table 2.1).

During the 1st scenario (RCP 4.5: 2006-2035), groundwater recharge is expected to decrease by up to 4.3% from the baseline years. A further decrease in groundwater recharge of up to 8.6% is estimated to occur during the next 30 years of the stabilization scenario (2036-2065). After 2065, a total of 12.5% decrease in volume of groundwater recharge from the baseline is projected to take place. For the high-emissions scenario (RCP 8.5: 2006-2035), groundwater recharge to the basin is expected to decrease by up to 5.9%, higher than what the stabilization scenario should predict. At the end of the next 30-year period, in 2065, up to 8.0% further decrease in the volume of groundwater recharge is anticipated to occur, translating to a total of up to 13.5% decrease from the baseline period.

To summarize, groundwater and surface water resources of the Calategas River Basin are limited owing to its natural characteristics. Both climate change projections (RCP 4.5 & 8.5) tell us that the monthly flows might decrease by 16%, while groundwater recharge might decrease by up to 13.5% by the end of

2065. Thus, interventions and solutions, both nature-based and institutional measures to conserve water resources, must be prioritized in the areas identified above.

TABLE 2.1. PROJECTED VOLUME OF GROUNDWATER RECHARGE OF THE CALATEGAS RIVER BASIN BASED ON 2 CLIMATE CHANGE PROJECTIONS

	Baseline (1976-2005)	RCP 4.5 (2006-2035)	RCP 4.5 (2036-2065)	RCP 8.5 (2006-2035)	RCP 8.5 (2036-2065)
	Volume of recharge reported in cubic meters (m³)				
Calategas	2,185,746.54	2,091,534.04	1,912,426.20	2,057,007.45	1,891,529.81

SECTION 3: POLICY RECOMMENDATIONS

Based on the mean value of the three flow analysis methods, Calategas River has a calculated 80% dependable flow of $0.05 \text{ m}^3 \text{ s}^{-1}$. Currently, there are already users of the water in the river primarily for irrigation purposes, and that these extractions are already at the limit of the river's dependable flow. While total volumes are very minimal, small rivers like the Calategas River are the only sources of water in isolated farm communities. These are also most affected by climate change with dry season flow in Calategas River going down to as low as $0.03 \text{ m}^3 \text{ s}^{-1}$ and may even dry up because groundwater resources in the area is also not very extensive which usually supplies water to rivers during low flow conditions. Still, the river ecosystem is fairly intact upstream which should be protected and even enhanced to increase river flow downstream.

In terms of the river's protection of water volume and water quality, the following are our recommendations:

- Monitor registered and unregistered water extractions in order to manage;
- Provide programs that will lead to bank stabilization and reduction of any pollutants entering the river;
- Develop small water impoundments (SWIPs) and shallow dug wells along the floodplains to provide water during the dry season. A shift towards cultivating crops that are less water intensive should also be planned ahead of time in anticipation of drier conditions.

References

- Deepa, S., Venkateswaran, S., Ayyandurai, R. et al. Groundwater recharge potential zones mapping in upper Manimuktha Sub basin Vellar river Tamil Nadu India using GIS and remote sensing techniques. *Model. Earth Syst. Environ.* 2, 137 (2016). <https://doi.org/10.1007/s40808-016-0192-9>.
- Kourgialas, N., Karatzas, G. Groundwater contamination risk assessment in Crete, Greece, using numerical tools within a GIS framework. *Hydrological Sciences Journal* 60(1), 111-132 (2015). <https://doi.org/10.1080/02626667.2014.885653>.
- Kotchoni, D.O.V., Vouillamoz, J.M., Lawson, F.M.A. et al. Relationships between rainfall and groundwater recharge in seasonally humid Benin: a comparative analysis of long-term hydrographs in sedimentary and crystalline aquifers. *Hydrogeol J* 27, 447–457 (2019). <https://doi.org/10.1007/s10040-018-1806-2>.
- Ministry of Public Works and Highways. Design Guidelines Criteria and Standards, Vol. I (1987). In: Department of Public Works and Highways (DPWH) and Japan International Cooperation Agency (JICA). Manual on Flood Control Planning, March 2003.
- Neri, M., Le Cozannet, G., Thierry, P., Bignami, C., and Ruch, J.: A method for multi-hazard mapping in poorly known volcanic areas: an example from Kanlaon (Philippines), *Nat. Hazards Earth Syst. Sci.*, 13, 1929–1943, <https://doi.org/10.5194/nhess-13-1929-2013>, 2013.
- Senanayake, I.P., Dissanayake, D.M.D.O.K., Mayadunna, B.B., Weerasekera, W.L. An approach to delineate groundwater recharge potential sites in Ambalantota, Sri Lanka using GIS techniques. *Geoscience Frontiers* 7(1), 115-124 (2016). <https://doi.org/10.1016/j.gsf.2015.03.002>.
- Shaban, A., Khawlie, M. & Abdallah, C. Use of remote sensing and GIS to determine recharge potential zones: the case of Occidental Lebanon. *Hydrogeol J* 14, 433–443 (2006). <https://doi.org/10.1007/s10040-005-0437-6>.
- Yeh, H.F., Lee, C.H., Hsu, K.C. et al. GIS for the assessment of the groundwater recharge potential zone. *Environ Geol* 58, 185–195 (2009). <https://doi.org/10.1007/s00254-008-1504-9>.