

3RD QUARTER MMT CMDC VALIDATION

4TH Quarter Air, Noise and Water Sampling

PULOT NICKEL MINING PROJECT

Brgy. Punang/Pulot Interior/Labog, Sofronio Española, Palawan

Sampling Team:

EMB MIMAROPA Region

PEMU Palawan – SEMS Zosima D. Jampit

Regional Office – Geologist Niño Jefferson L. Rojas

PHO: Nelso C. Virgo

LGU: Jessie Galang

Daniel Boston

CMDC Representatives: Nalma A. Asmad and company

OUTLINE

ENVIRONMENTAL LAWS

- I. R.A. No. 6969 (Toxic Substances and Hazardous and Nuclear Wastes Control Act of 1990)
- II. R.A. No. 9003 (Ecological Solid Waste Management of 2000)
- III. R.A. No. 9275 (Philippine Clean Water Act of 2004)
 - Water Sampling Activities
- IV. R.A. No. 8749 (Philippine Clean Air Act of 1999)
 - Air and Noise Sampling Activities

01

R.A. 6969 (Toxic Substances and Hazardous and Nuclear Wastes
Control Act of 1990)

01

R.A. 6969 (Toxic Substances and hazardous and Nuclear Wastes Control Act of 1990)



01

R.A. 6969 (Toxic Substances and hazardous and Nuclear Wastes Control Act of 1990)



FINDINGS AND OBSERVATIONS

The two (2) contractors for this project (Canipaan Earth Resources Inc. (CERI) and Ireah Trading Corporation (ITC) already have an accredited PCO. Online applications for HWG ID are now on going with the company's assistance.

GENERAL RECOMMENDATIONS

Continue promptness of compliances to existing environmental laws covered by the project.

Continue the assistance to the contractors in complying applicable environmental laws.

02

R.A. No. 9003 (Ecological Solid Waste Management of 2000)

R.A. 9003 (Ecological Solid Waste Management of 2000)



FINDINGS AND OBSERVATIONS

The company is still using the old admin building as temporary RCA while the MOA with the concerned LGU-Espanola is still on process.

03

R.A. No. 9275 (Philippine Clean Water Act of 2004)

R.A. No. 9275 (Philippine Clean Water Act of 2004)

Page 1 of 2



Date: Sep 07, 2002

Permit No.: DP-R4B-22-06958

Renewal

WASTEWATER DISCHARGE PERMIT

Pursuant to Section 14, Article 2, of the RA 9275 otherwise known as the "Philippine Clean Water Act of 2004", this permit is hereby granted to **Citicorrel Mines And Development Corporation** with office address at Bgy. Pulut Interior, Punung And Labog Sofronio Española, Punung, Sofronio Española, Palawan for its establishment:

Citicorrel Mines And Development Corporation-pulut Nickel Mining Project		Bgy. Pulut Interior, Punung And Labog Sofronio Española, Palawan Punung SC/FRONDO ESPAÑOLA	
TIN No. 245-745-964-000			
1. This permit is issued to the Pulut Nickel Mining Project and the permit holder shall discharge to the final discharge point of the Tagusao Siltation Pond System with capacity of 220,000 cubic meters.			
2. The permit holder shall ensure that discharge rate of the effluent from the Tagusao Siltation Pond shall not exceed its design rate capacity and shall comply with the following standard:			
Parameter	Standard	Parameter	Standard
pH	6.0-9.5	Arsenic	0.04 mg/L
Manganese	4 mg/L	Lead	0.1 mg/L
Cadmium	0.01 mg/L	Total Suspended Solids	100 mg/L
Nickel	0.3 mg/L		

* Reference for effluent parameters: DAO 2016-08 and DAO 2021-10. PSC Code: 07394

3. **Submit Wastewater Discharge Permit Application for your other outfall/outlet within thirty (30) days upon receipt hereof, if any.**

4. **Submit Self-Monitoring (SMR) based on the following schedule:**

Quarter	Coverage	Submission	Quarter	Coverage	Submission
* First	Jan-Mar	1-15-Apr	* Third	Jul-Sep	1-15-Oct
* Second	Apr-Jun	1-15-Jul	* Fourth	Oct-Dec	1-15-Jan

* Include Certificate of Treatment for any effluent discharged to any receiving water body or land in every submission of the SMR

- The permit holder shall include effluent analysis on the parameters listed in condition no. 2 of this permit, conducted by Third Party Laboratory duly recognized by EMB, in every submission of the SMR.
- All water consumption shall be measured and recorded on a daily basis. An effective flow-metering device(s) shall be installed for this purpose.
- The permit holder shall maintain the flow-measuring device at influent and effluent sides of its WTF. A monitoring log book shall be maintained and kept at all times. It shall be made available to DENR-EMB and/or its duly authorized representative(s).



This is a computer generated certificate. To verify the authenticity of this file, login your QR Code using your QR Code scanner/mobile or visit the DENR website for details.

Protect the environment... Protect life...

Page 1 of 2



Date: Sep 13, 2002

Permit No.: DP-R4B-22-07127

Renewal

WASTEWATER DISCHARGE PERMIT

Pursuant to Section 14, Article 2, of the RA 9275 otherwise known as the "Philippine Clean Water Act of 2004", this permit is hereby granted to **Citicorrel Mines And Development Corporation (pulut Siltation Pond Discharge)** with office address at Barangay Pulut Interior (pulut I), Punung And Labog, Sofronio Española, Palawan for its establishment:

Citicorrel Mines And Development Corporation-pump (pulut Siltation Pond Discharge)		Barangay Pulut Interior (pulut I), Punung And Labog, Sofronio Española, Palawan Punung SOFRONIO ESPAÑOLA	
TIN No. 245-745-964-000			
1. The discharge rate of the effluent shall not exceed the 200, 000 m3/day design capacity of the Wastewater Treatment Facility (WTF) (Pulut Siltation Pond) and shall comply with the following standard:			
Parameter	Standard	Parameter	Standard
pH	6.0-9.0	Arsenic	0.04 mg/L
Manganese	4 mg/L	Lead	0.1 mg/L
Cadmium	0.01 mg/L	Total Suspended Solids	100 mg/L
Nickel	0.3 mg/L		

* Reference for effluent parameters: DAO 2016-08 and DAO 2021-10. PSC Code: 07394

2. **Submit Wastewater Discharge Permit Application for your other outfall/outlet within thirty (30) days upon receipt hereof, if any.**

3. **Submit Self-Monitoring (SMR) based on the following schedule:**

Quarter	Coverage	Submission	Quarter	Coverage	Submission
* First	Jan-Mar	1-15-Apr	* Third	Jul-Sep	1-15-Oct
* Second	Apr-Jun	1-15-Jul	* Fourth	Oct-Dec	1-15-Jan

* Include Certificate of Treatment for any effluent discharged to any receiving water body or land in every submission of the SMR

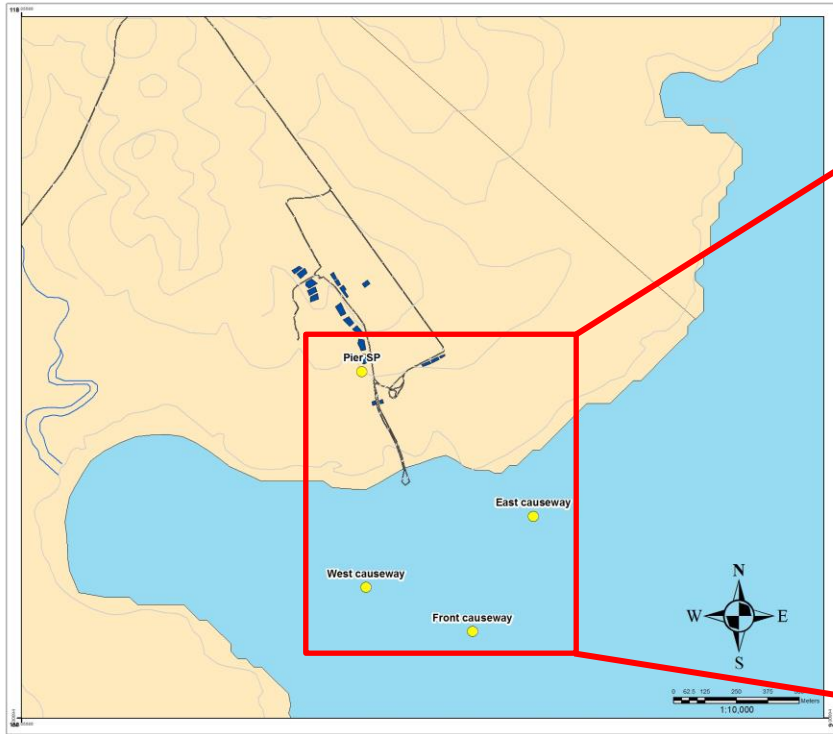
- The permit holder shall include effluent analysis on the parameters listed in condition no. 1 of this permit, conducted by Third Party Laboratory duly recognized by EMB, in every submission of the SMR.
- All water consumption shall be measured and recorded on a daily basis. An effective flow-metering device(s) shall be installed for this purpose.
- The permit holder shall maintain the flow-measuring device at influent and effluent sides of its WTF. A monitoring log book shall be maintained and kept at all times. It shall be made available to DENR-EMB and/or its duly authorized representative(s).
- Submit certificate or any documentary proof of desludging of the WTF.



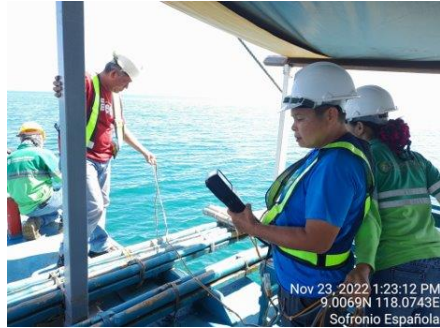
This is a computer generated certificate. To verify the authenticity of this file, login your QR Code using your QR Code scanner/mobile or visit the DENR website for details.

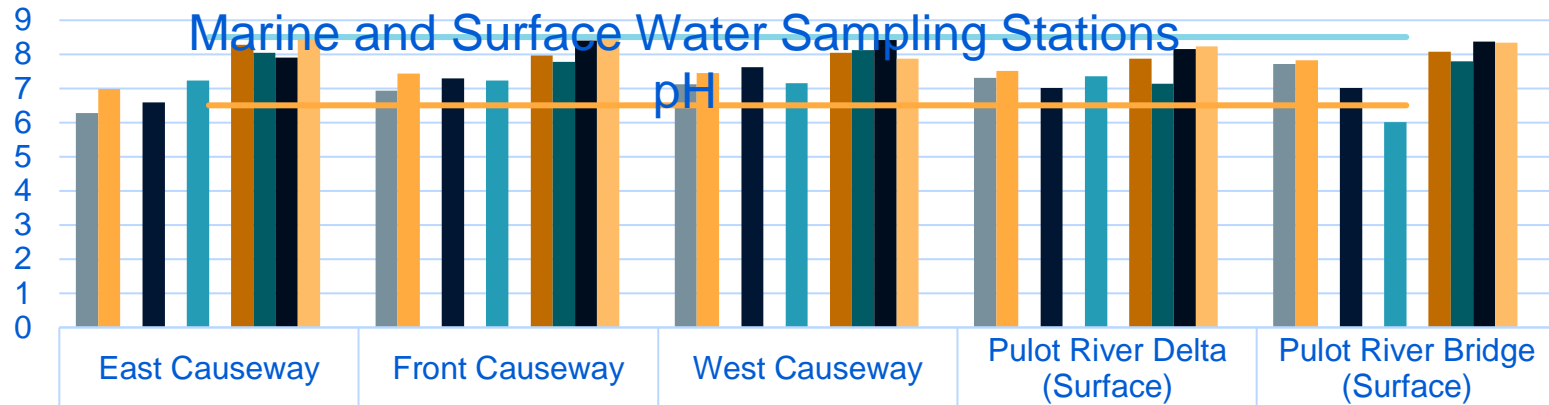
Protect the environment... Protect life...

Pier Site Water Sampling Stations



MARINE WATER SAMPLING





	East Causeway	Front Causeway	West Causeway	Pulot River Delta (Surface)	Pulot River Bridge (Surface)
1Q2020	6.28	6.94	7.12	7.31	7.71
2Q2020	6.98	7.44	7.45	7.51	7.82
3Q2020	0	0	0	0	0
4Q2020	6.6	7.29	7.63	7.02	7.01
1Q2021	0	0	0	0	0
2Q2021	7.24	7.24	7.16	7.36	6.02
3Q2021	0	0	0	0	0
4Q2021	8.28	7.97	8.05	7.88	8.08
1Q2022	8.05	7.78	8.13	7.14	7.8
2Q2022	7.9	8.4	8.44	8.15	8.38
3Q2022	8.45	8.49	7.87	8.23	8.34
4Q2022					
DENR Standard (min)	6.5	6.5	6.5	6.5	6.5
DENR Standard (max)	8.5	8.5	8.5	8.5	8.5

*For CY 2021, MMT was conducted on February, July and November. Hence, no data on 3rd Quarter

mg/L

Marine and Surface Water Sampling Stations

Arsenic

0.025
0.02
0.015
0.01
0.005
0

	East Causeway	Front Causeway	West Causeway	Pulot River Delta (Surface)	Pulot River Bridge (Surface)
1Q2020	0.008	0.008	0.008	0.008	0.008
2Q2020	0.008	0.008	0.008	0.008	0.008
3Q2020	0.008	0.008	0.008	0.008	0.008
4Q2020	0.008	0.008	0.008	0.008	0.008
1Q2021	0.008	0.008	0.008	0.008	0.008
2Q2021	0.005	0.005	0.005	0.005	0.005
3Q2021	0	0	0	0	0
4Q2021	0.005	0.005	0.005	0.005	0.005
1Q2022	0.005	0.005	0.005	0.005	0.005
2Q2022	0.005	0.005	0.005	0.005	0.005
3Q2022	0.005	0.005	0.005	0.005	0.005
4Q2022					
DENR Standard	0.02	0.02	0.02	0.02	0.02

*For CY 2021, MMT was conducted on February, July and November. Hence, no data on 3rd Quarter

mg/L

Marine and Surface Water Sampling Stations

Cadmium



*For CY 2021, MMT was conducted on February, July and November. Hence, no data on 3rd Quarter

mg/L

Marine and Surface Water Sampling Stations

Lead

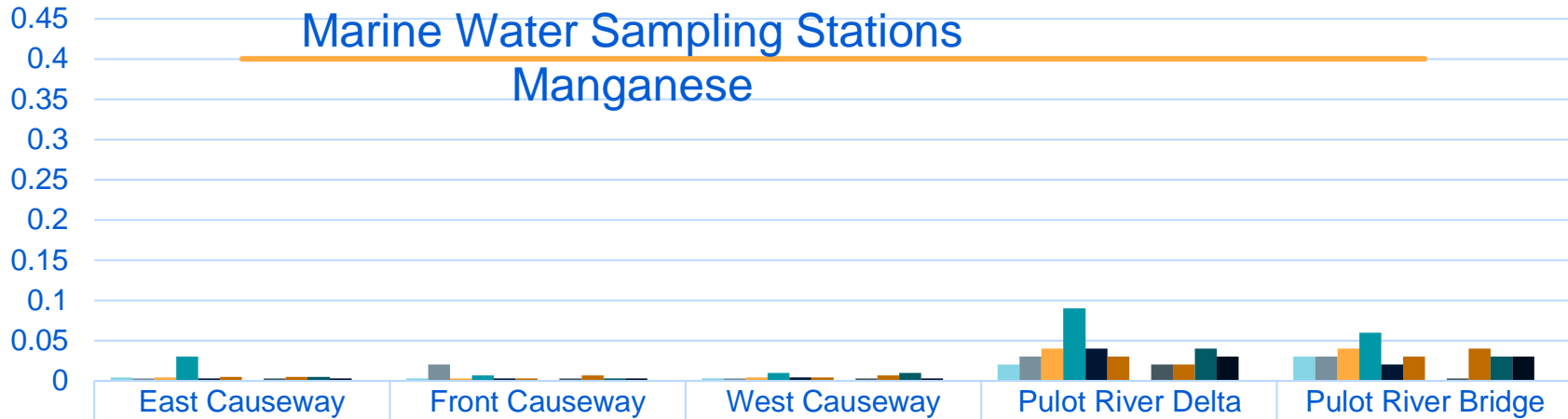
0.06
0.05
0.04
0.03
0.02
0.01
0

	East Causeway	Front Causeway	West Causeway	Pulot River Delta (Surface)	Pulot River Bridge (Surface)
1Q2020	0.005	0.005	0.005	0.005	0.005
2Q2020	0.005	0.005	0.005	0.005	0.005
3Q2020	0.005	0.005	0.005	0.005	0.005
4Q2020	0.005	0.005	0.005	0.005	0.005
1Q2021	0.005	0.005	0.005	0.005	0.005
2Q2021	0.005	0.005	0.005	0.005	0.005
3Q2021	0	0	0	0	0
4Q2021	0.005	0.005	0.005	0.005	0.005
1Q2022	0.005	0.005	0.005	0.005	0.005
2Q2022	0.005	0.005	0.005	0.005	0.005
3Q2022	0.005	0.005	0.005	0.005	0.005
4Q2022					
DENR Standard	0.05	0.05	0.05	0.05	0.05

*For CY 2021, MMT was conducted on February, July and November. Hence, no data on 3rd Quarter

Marine Water Sampling Stations

Manganese



*For CY 2021, MMT was conducted on February, July and November. Hence, no data on 3rd Quarter

mg/L

Marine and Surface Water Sampling Stations

Nickel

1.2
1
0.8
0.6
0.4
0.2
0

East Causeway

Front Causeway

West Causeway

Pulot River Delta

Pulot River Bridge

1Q2020

0.003

0.003

0.003

0.003

0.003

2Q2020

0.003

0.003

0.003

0.003

0.003

3Q2020

0.003

0.003

0.003

0.01

0.01

4Q2020

0.003

0.003

0.003

0.01

0.04

1Q2021

0.003

0.003

0.003

0.003

0.009

2Q2021

0.003

0.003

0.003

0.003

0.003

3Q2021

0

0

0

0

0

4Q2021

0.003

0.003

0.003

0.003

0.003

1Q2022

0.003

0.003

0.003

0.003

0.003

2Q2022

0.003

0.003

0.003

0.003

0.007

3Q2022

0.003

0.003

0.003

0.003

0.003

4Q2022

DENR Standard

1

1

1

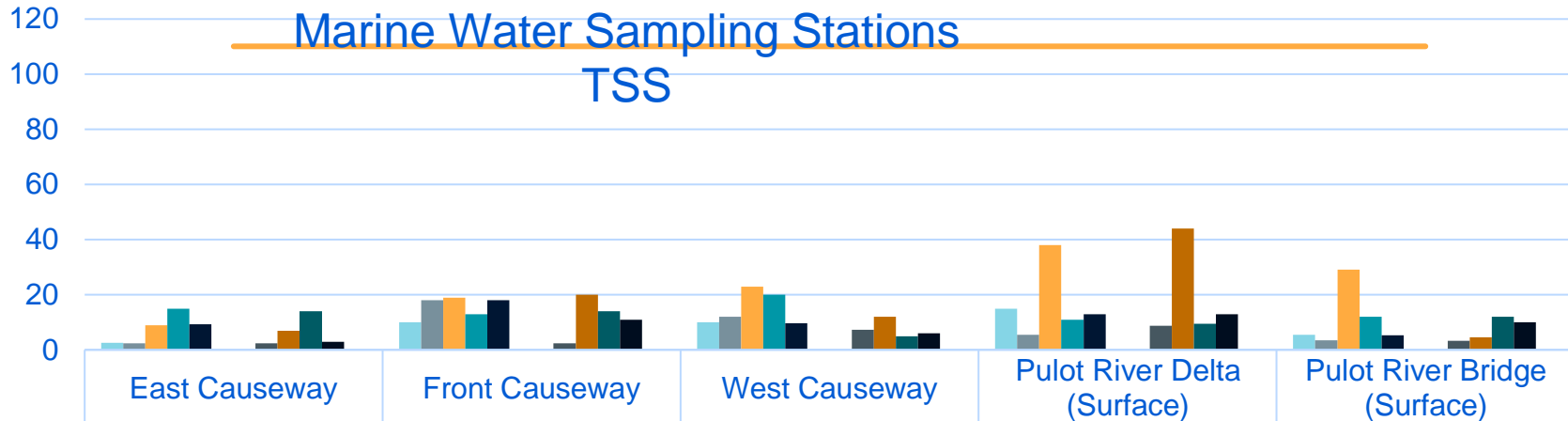
1

1

*For CY 2021, MMT was conducted on February, July and November. Hence, no data on 3rd Quarter

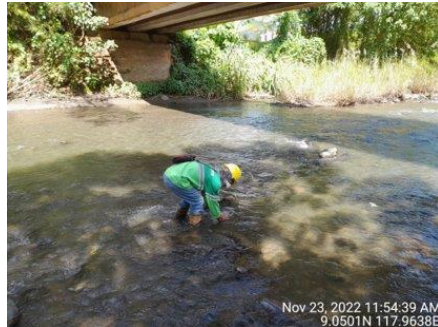
Marine Water Sampling Stations

TSS

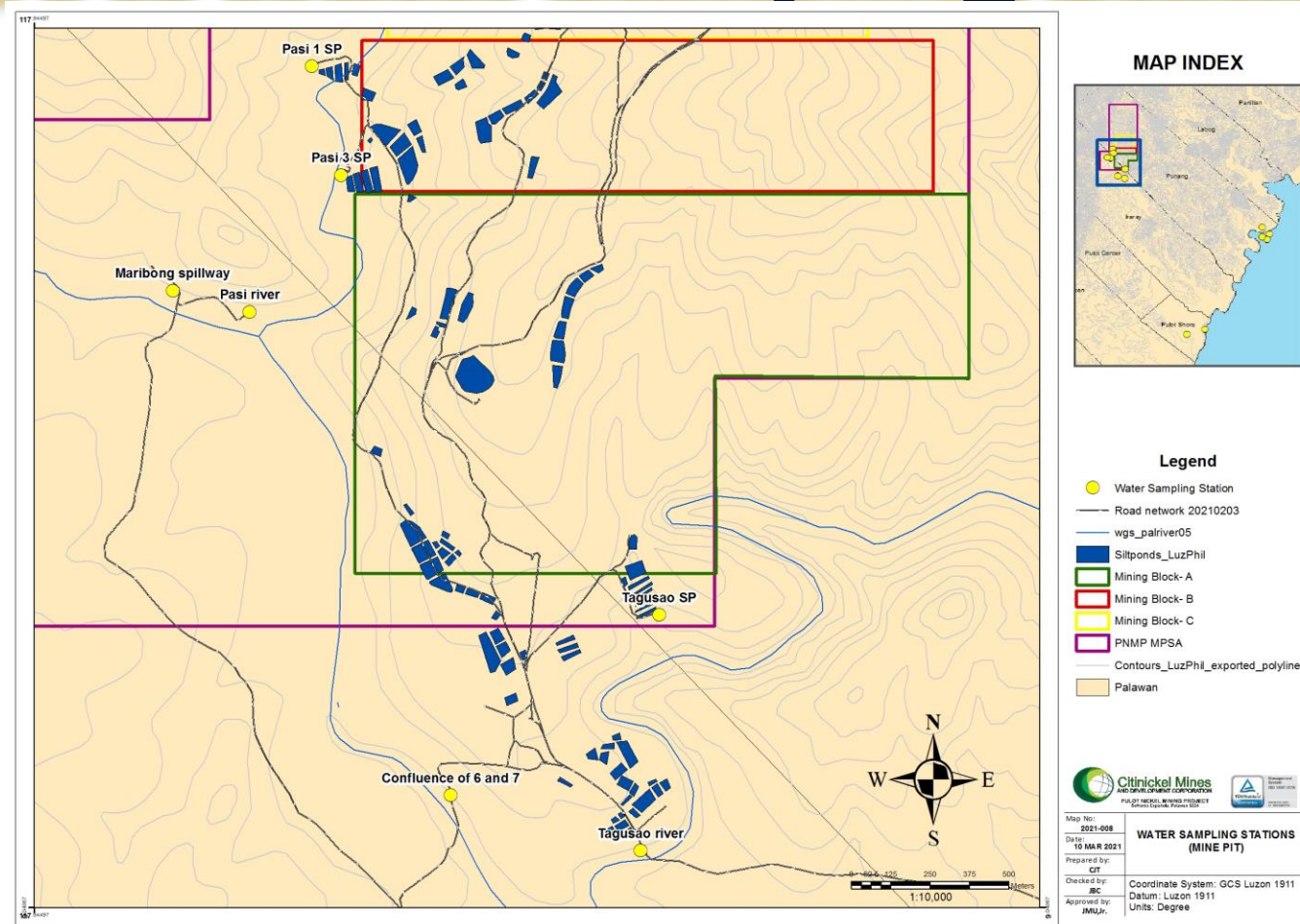


*For CY 2021, MMT was conducted on February, July and November. Hence, no data on 3rd Quarter

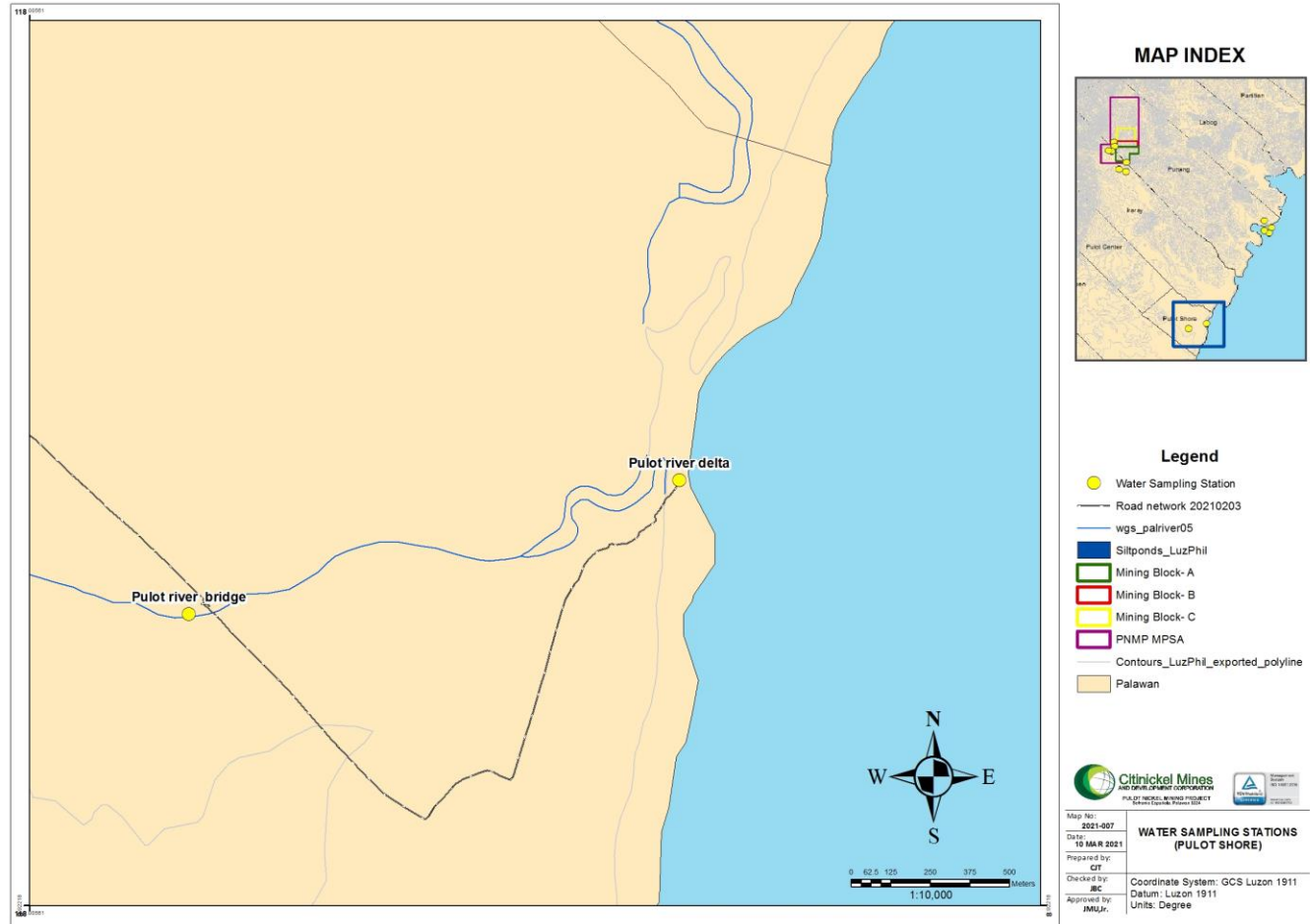
AMBIENT WATER SAMPLING

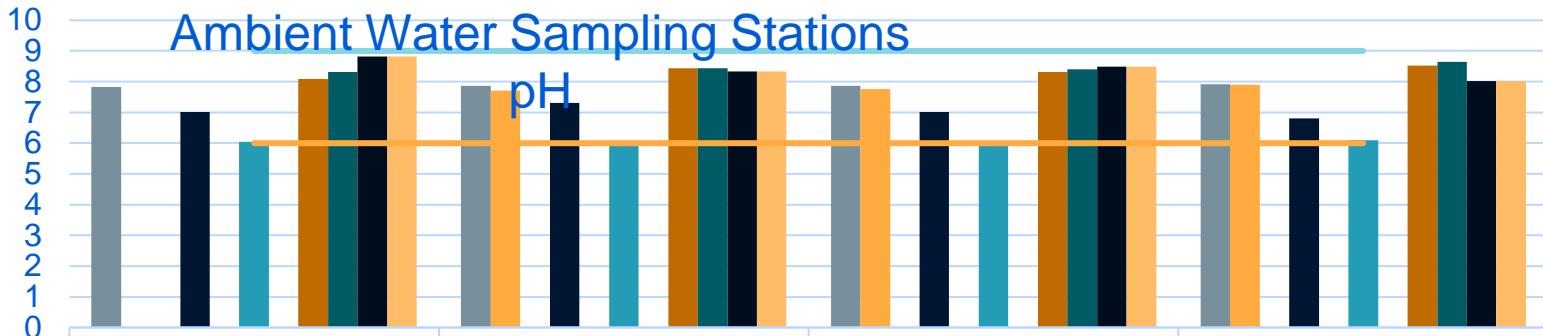


Mine Pit Water Sampling Stations



Pulot Shore Water Sampling Stations





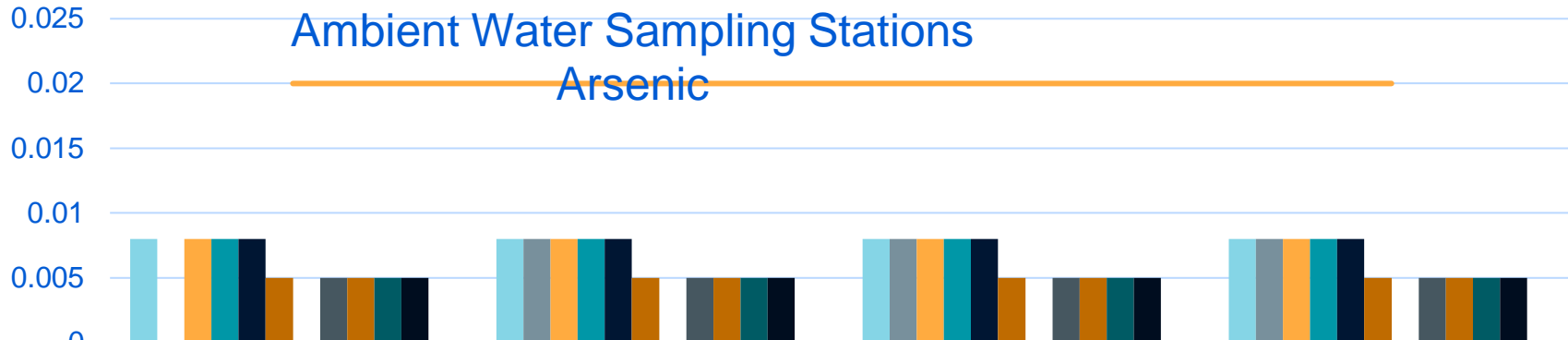
	Maribong Spillway	Pasi River	Confluence of Station 6 and 7	Tagusao River
1Q2020	7.82	7.86	7.87	7.91
2Q2020	0	7.7	7.76	7.89
3Q2020	0	0	0	0
4Q2020	7.02	7.3	7.01	6.8
1Q2021	0	0	0	0
2Q2021	6.05	6.07	6.06	6.09
3Q2021	0	0	0	0
4Q2021	8.08	8.44	8.32	8.52
1Q2022	8.31	8.43	8.4	8.64
2Q2022	8.82	8.34	8.48	8.02
3Q2022	8.82	8.34	8.48	8.02
DENR Standard (min)	6	6	6	6
DENR Standard (max)	9	9	9	9
4Q2022				

**For CY 2021, MMT was conducted on February, July and November. Hence, no data on 3rd Quarter*

mg/L

Ambient Water Sampling Stations

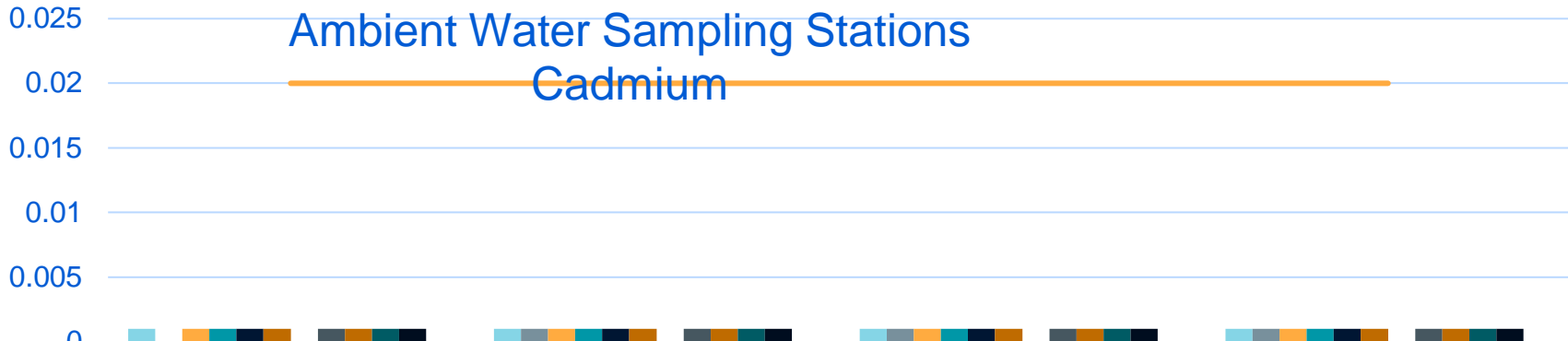
Arsenic



*For CY 2021, MMT was conducted on February, July and November. Hence, no data on 3rd Quarter

Cadmium

0.025
0.02
0.015
0.01
0.005



	Maribong Spillway	Pasi River	Confluence of Station 6 and 7	Tagusao River
1Q2020	0.001	0.001	0.001	0.001
2Q2020		0.001	0.001	0.001
3Q2020	0.001	0.001	0.001	0.001
4Q2020	0.001	0.001	0.001	0.001
1Q2021	0.001	0.001	0.001	0.001
2Q2021	0.001	0.001	0.001	0.001
3Q2021	0	0	0	0
4Q2021	0.001	0.001	0.001	0.001
1Q2022	0.001	0.001	0.001	0.001
2Q2022	0.001	0.001	0.001	0.001
3Q2022	0.001	0.001	0.001	0.001
4Q2022				
DENR Standard	0.02	0.02	0.02	0.02

**For CY 2021, MMT was conducted on February, July and November. Hence, no data on 3rd Quarter*

mg/L

Ambient Water Sampling Stations

Lead

0.12
0.1
0.08
0.06
0.04
0.02
0

Maribong Spillway

Pasi River

Confluence of Station 6
and 7

Tagusao River

1Q2020

0.005

0.005

0.005

0.005

2Q2020

0

0.005

0.005

0.005

3Q2020

0.005

0.005

0.005

0.005

4Q2020

0.005

0.005

0.005

0.005

1Q2021

0.005

0.005

0.005

0.005

2Q2021

0.005

0.005

0.005

0.005

3Q2021

0

0

0

0

4Q2021

0.005

0.005

0.005

0.005

1Q2022

0.005

0.005

0.005

0.005

2Q2022

0.005

0.005

0.005

0.005

3Q2022

0.005

0.005

0.005

0.005

4Q2022

DENR Standard

0.1

0.1

0.1

0.1

*For CY 2021, MMT was conducted on February, July and November. Hence, no data on 3rd Quarter

Ambient Water Sampling Stations

Manganese

2.5
2
1.5
1
0.5
0

	Maribong Spillway	Pasi River	Confluence of Station 6 and 7	Tagusao River
1Q2020	0.008	0.006	0.006	0.02
2Q2020	0	0.01	0.004	0.01
3Q2020	0.009	0.009	0.007	0.02
4Q2020	0.006	0.009	0.01	0.01
1Q2021	0.009	0.007	0.004	0.01
2Q2021	0.006	0.007	0.04	0.03
3Q2021	0	0	0	0
4Q2021	0.004	0.006	0.006	0.004
1Q2022	0.04	0.04	0.01	0.008
2Q2022	0.007	0.01	0.02	0.01
3Q2022	0.006	0.02	0.009	0.02
4Q2022				
DENR Standard	2	2	2	2

*For CY 2021, MMT was conducted on February, July and November. Hence, no data on 3rd Quarter

mg/L

Ambient Water Sampling Stations

Nickel

1.2
1
0.8
0.6
0.4
0.2
0

Maribong Spillway

Pasi River

Confluence of Station 6
and 7

Tagusao River

1Q2020

0.003

0.003

0.003

0.004

2Q2020

0

0.003

0.003

0.004

3Q2020

0.003

0.003

0.003

0.008

4Q2020

0.005

0.01

0.01

0.01

1Q2021

0.003

0.004

0.003

0.008

2Q2021

0.003

0.003

0.003

0.004

3Q2021

0

0

0

0

4Q2021

0.003

0.003

0.003

0.005

1Q2022

0.004

0.003

0.003

0.003

2Q2022

0.003

0.033

0.005

0.004

3Q2022

0.003

0.003

0.003

0.005

4Q2022

DENR Standard

1

1

1

1

*For CY 2021, MMT was conducted on February, July and November. Hence, no data on 3rd Quarter

Ambient Water Sampling Stations

Total Suspended Solid (TSS)



*For CY 2021, MMT was conducted on February, July and November. Hence, no data on 3rd Quarter

EFFLUENT WATER SAMPLING



Effluent Water Sampling Stations

pH

10
9
8
7
6
5
4
3
2
1
0

	Tagusao Siltation Pond	Stockyard Siltation Pond
1Q2020	0	0
2Q2020	0	0
3Q2020	0	0
4Q2020	0	0
1Q2021	0	0
2Q2021	0	0
3Q2021	0	0
4Q2021	0	0
1Q2022	0	0
2Q2022	0	0
3Q2022	0	0
4Q2022		
DENR Standard (min)	6	6
DENR Standard (max)	9	9

**No reading on 4th Quarter 2021, 4th Quarter 2021, and 2nd Quarter 2022 due to defective sampler*

***For CY 2021, MMT was conducted on February, July and November. Hence, no data on 3rd Quarter*

mg/L

Effluent Water Sampling Stations

Arsenic

0.045
0.04
0.035
0.03
0.025
0.02
0.015
0.01
0.005
0

Tagusao Siltation Pond

Stockyard Siltation Pond

1Q2020

0

0

2Q2020

0

0

3Q2020

0

0

4Q2020

0.008

0

1Q2021

0

0

2Q2021

0

0

3Q2021

0

0

4Q2021

0.005

0

1Q2022

0

0

2Q2022

0

0.005

3Q2022

0

0

4Q2022

DENR Standard

0.04

0.04

*No reading with 4th Quarter 2020 and 2021 due to defective sampler

**For CY 2021, MMT was conducted on February, July and November. Hence, no data on 3rd Quarter

Effluent Water Sampling Stations

mg/L

Cadmium

0.012
0.01
0.008
0.006
0.004
0.002
0

Tagusao Siltation Pond

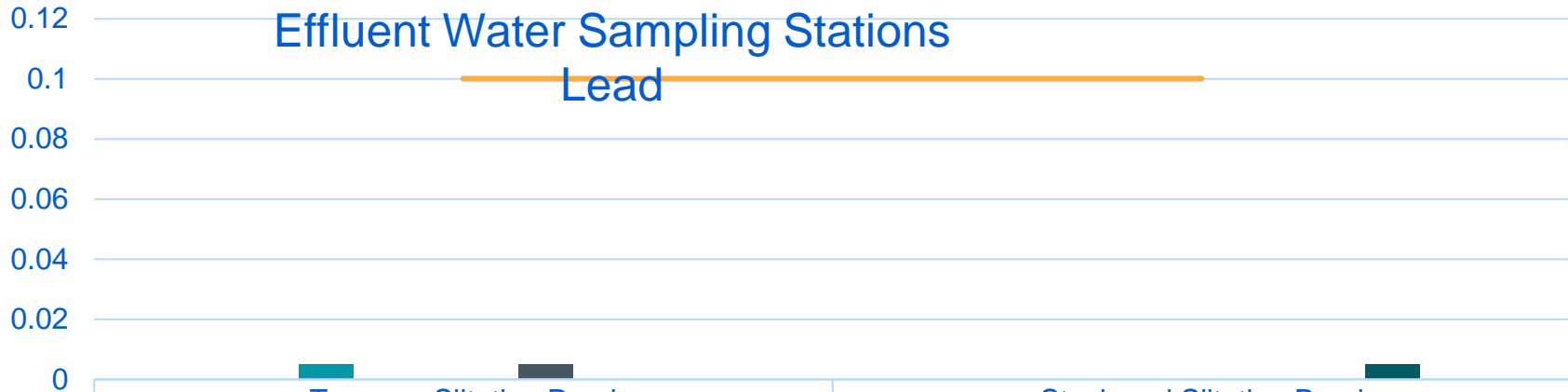
Stockyard Siltation Pond

1Q2020	0	0
2Q2020	0	0
3Q2020	0	0
4Q2020	0.001	0
1Q2021	0	0
2Q2021	0	0
3Q2021	0	0
4Q2021	0.001	0
1Q2022	0	0
2Q2022	0	0.001
3Q2022	0	0
4Q2022		
DENR Standard	0.01	0.01

*For CY 2021, MMT was conducted on February, July and November. Hence, no data on 3rd Quarter

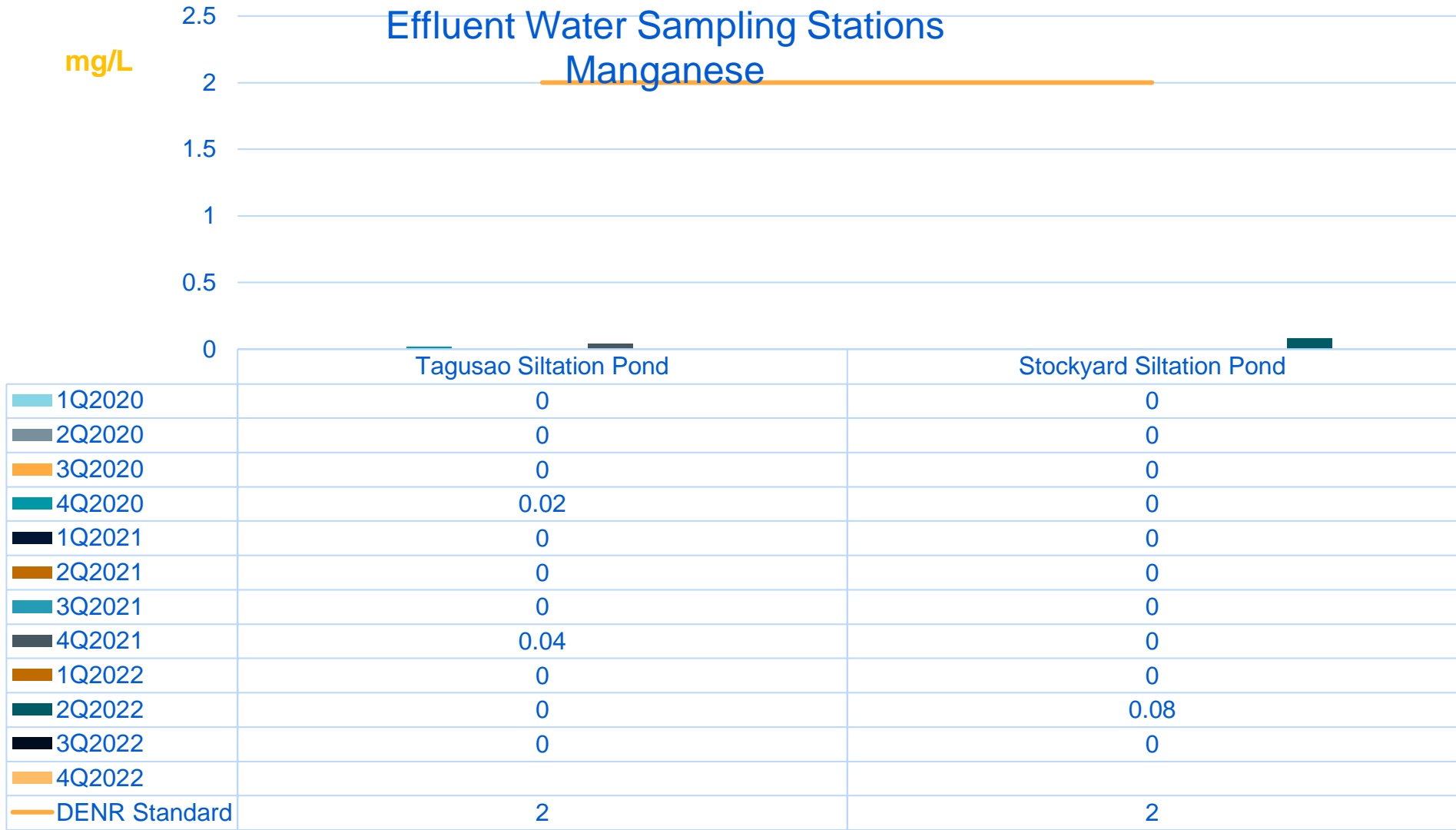
Lead

0.12
0.1
0.08
0.06
0.04
0.02
0



	Tagusao Siltation Pond	Stockyard Siltation Pond
1Q2020	0	0
2Q2020	0	0
3Q2020	0	0
4Q2020	0.005	0
1Q2021	0	0
2Q2021	0	0
3Q2021	0	0
4Q2021	0.005	0
1Q2022	0	0
2Q2022	0	0.005
3Q2022	0	0
4Q2022		
DENR Standard	0.1	0.1

**For CY 2021, MMT was conducted on February, July and November. Hence, no data on 3rd Quarter*



mg/L

Effluent Water Sampling Stations

Nickel

1.2
1
0.8
0.6
0.4
0.2
0

Tagusao Siltation Pond

Stockyard Siltation Pond

1Q2020

0

0

2Q2020

0

0

3Q2020

0

0

4Q2020

0.02

0

1Q2021

0

0

2Q2021

0

0

3Q2021

0

0

4Q2021

0.01

0

1Q2022

0

0

2Q2022

0

0.02

3Q2022

0

4Q2022

DENR Standard

1

1

*For CY 2021, MMT was conducted on February, July and November. Hence, no data on 3rd Quarter

mg/L

Effluent Water Sampling Stations

Total Suspended Solid (TSS)

120
100
80
60
40
20
0

Tagusao Siltation Pond

Stockyard Siltation Pond

1Q2020

0

0

2Q2020

0

0

3Q2020

0

0

4Q2020

0

0

1Q2021

0

0

2Q2021

0

0

3Q2021

0

0

4Q2021

2.38

0

1Q2022

0

0

2Q2022

0

20

3Q2022

0

0

4Q2022

DENR Standard

100

100

*For CY 2021, MMT was conducted on February, July and November. Hence, no data on 3rd Quarter

mg/L

Effluent Water Sampling Stations

Oil and Grease

6
5
4
3
2
1
0

Tagusao Siltation Pond

Stockyard Siltation Pond

1Q2020

0

0

2Q2020

0

0

3Q2020

0

0

4Q2020

0

0

1Q2021

0

0

2Q2021

0

0

3Q2021

0

0

4Q2021

1.7

0

1Q2022

0

0

2Q2022

0

1.6

3Q2022

0

0

4Q2022

DENR Standard

5

5

*For CY 2021, MMT was conducted on February, July and November. Hence, no data on 3rd Quarter

FINDINGS AND OBSERVATIONS

It was reported previously that the Company has nine (9) water sampling stations for ambient and four (4) water sampling stations for effluent. However, during this monitoring, it was found out that there are **two (2) unit series of Siltation Ponds (currently known as PASI 4 and Tagusao Siltation Pond 1) located down the Minesite, and Old Admin Building and CERL Compound/Motor Pool, respectively, with a new compartment.** Out of these six (6) effluent stations, currently, four (4) sampling stations (**Pasi 1 and Pasi 3**) stations are observed to be **no discharge**.



FINDINGS AND OBSERVATIONS

The seven (7) air ambient sampling stations and nine (9) water ambient sampling stations still have no appropriate signages.

During the water sampling activity, the water checker provides a reading before being submerged in water particularly in pH parameter which may indicate that the checker needs an update calibration. Accordingly, the water checker will be sent to the calibration center after the MMT.

Some portions of the mining access road are muddy, and no proper bund wall was observed that seems unsafe and may cause discoloration of water bodies.

Portions of the active mining area (Block C) and proposed waste dump area in the mine site have **no** perimeter drainage canal and bund wall connecting to the established Pit Bottom Pond where rainwater might encroach down to the creeks that might later result to its water discoloration.



FINDINGS AND OBSERVATIONS

The company is accordingly now engaged with the third party for environmental biodiversity audit.

GENERAL RECOMMENDATIONS

The company is accordingly now engaged with the third party for environmental biodiversity audit , **it is recommended that coastal resources audit or study be also included.**

GENERAL RECOMMENDATIONS

Continue promptness of compliances to existing environmental laws covered by the project.

The proponent is advised to secure a Discharge Permit for the oil-and-water separator facilities.

Establishment of drainage canal/bund wall in the active mining area that is connected to the established Pit Bottom Pond.

GENERAL RECOMMENDATIONS

Observe regular equipment calibration

Recommending of regular fixing of bund walls and scraping in the access road.

The company is encouraged to apply coco net materials in the highly erodible areas to temporarily hold soil during rainy season.

04

R.A. No. 8749 (Philippine Clean Air Act of 1999)

04 R.A. No. 8749 (Philippine Clean Air Act of 1999)

Page 1 of 2

Republic of the Philippines
Department of Environment and Natural Resources
ENVIRONMENTAL MANAGEMENT BUREAU
Region IV-B
PENRO Compound, Brgy. Asan, Cebu City, Oriental Mindoro.
Satellite Office, 6th Floor DENR by the Bay Bldg., 1615 Roxas Blvd.,
Cebu, Manila
Tel No. (02) 536 97 06

Permit No: PTO-OL-RAB-2022-0359-R Date Issued: 02 Jun 2022
Application Type: Renewal Date Expiration: 02 Jun 2027

PERMIT TO OPERATE Air Pollution Source and Control Installations

Pursuant to Part IV, Rule XX of the Rules and Regulations of R.A. 8749, authority is hereby granted to:

CITINICKEL MINES AND DEVELOPMENT
CORPORATION- PULOIT NICKEL MINING PROJECT
CITINICKEL MINES AND DEVELOPMENT
CORPORATION- PULOIT NICKEL MINING PROJECT

South Road National Highway, Putang, Socorro,
Eguscola, Palawan

subject to the following terms and conditions:

TERMS AND CONDITIONS

1. This permit is issued for the permittee to operate One (1) unit 125.0 kVA Nippon Diesel Generator Set and One (1) unit 100.0 kVA Aikman Generator Set at the permittee's establishment.
2. Must conform to National Emission Standards for Source Specific Air Pollutants (Section 1, Rule XXV, Part VII of RA 8749) and Source Specific Ambient Air Quality Standards (Section 1, Rule XXVI, Part VIII of RA 8749).
3. Must submit notarized Quarterly Self-Monitoring Report (SMR) based on DAO-27, Series of 2003 on or before the filing dates:
 - 1st Quarter SMR (January to March) - 15th Day of April
 - 2nd Quarter SMR (April to June) - 15th Day of July
 - 3rd Quarter SMR (July to September) - 15th Day of October
 - 4th Quarter SMR (October to December) - 15th Day of January
4. Subject to revocation if found violating the said permit conditions and other provisions of the Philippine Clean Air Act of 1989 (RA 8749) and its Implementing Rules and Regulations.

This operating Permit shall be posted in a conspicuous location near the equipment and shall be adequately framed or otherwise protected against damage. Application for the renewal of Permit to Operate must be filed thirty (30) days before the expiration date.

Recommended by:

Enr. NICKIE YURI V. DORADO
OIC, Clearance and Permitting Division

Approved by:

JOE AMEL M. SALINO
Regional Director

Filing Fee	Php 600.00	O/R No.: 7658415 F	Date: 13 May 2022
Permit Fee	Php 5000.00	O/R No.: 7658415 F	Date: 13 May 2022
PD 1586	Php 10.00	O/R No.: 7658415 F	Date: 13 May 2022
Documentary Stamp Tax	Php 30.00	O/R No.: 7658415 F	Date: 13 May 2022

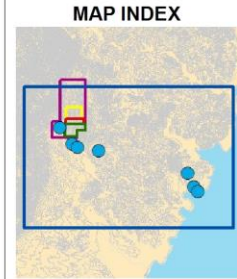
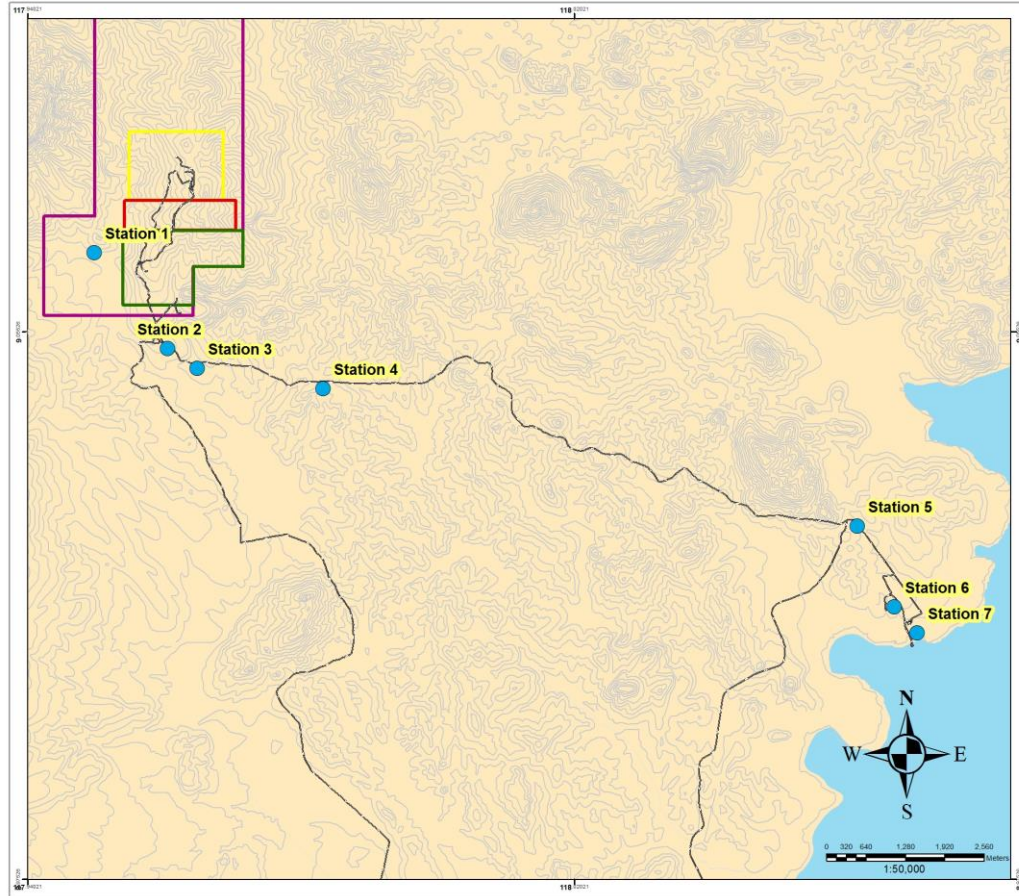


This is a computer generated authority. To verify the authenticity of this file, kindly scan the generated QR Code using your QR Code scanner or visit the DENR website for details.

Protect the environment... Protect life...



Noise and Ambient Air Quality Sampling Stations



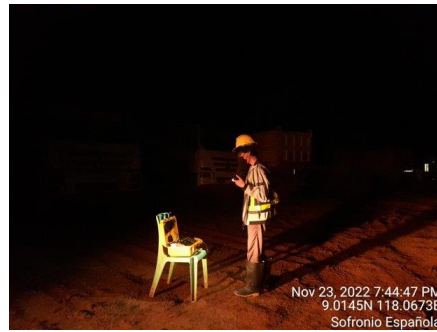
Legend

- Air Sampling Station
- Road network 2021/2023
- Mining Block-A
- Mining Block-B
- Mining Block-C
- PNMP MPSA
- Contours_20m
- Palawan

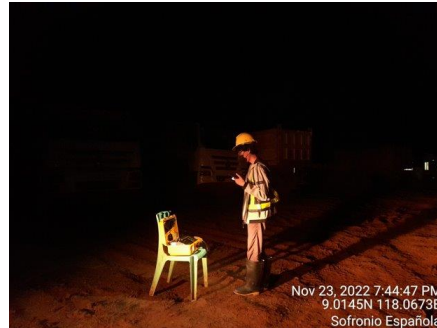


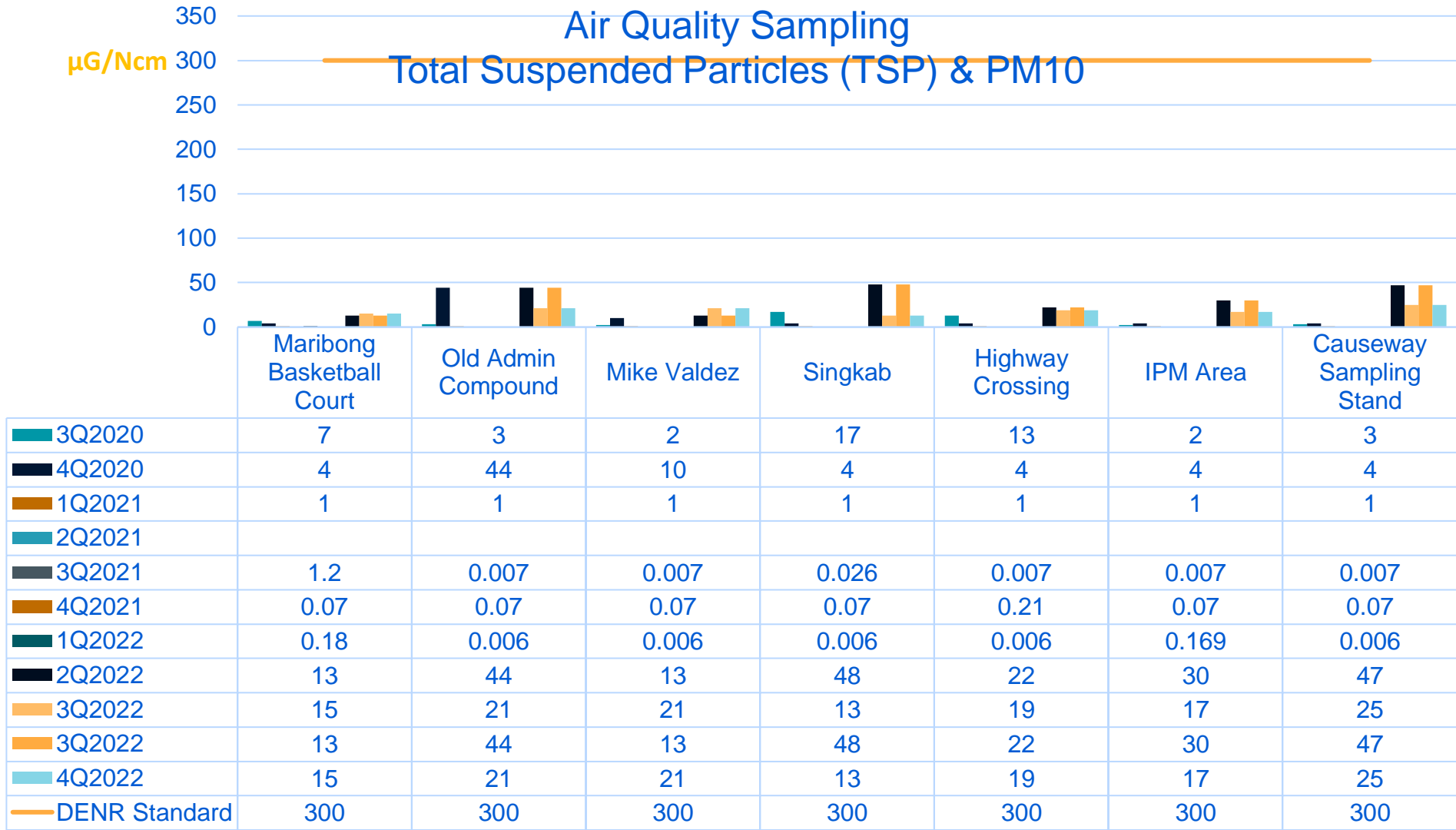
Map No: 2021-001	Air Sampling Stations
Date: 06 FEB 2021	
Prepared by: GT	Coordinate System: GCS Luzon 1911 Datum: Luzon 1911 Units: Degree
Checked by: JBC	
Approved by: JMUJr.	

NOISE AND AMBIENT AIR SAMPLING

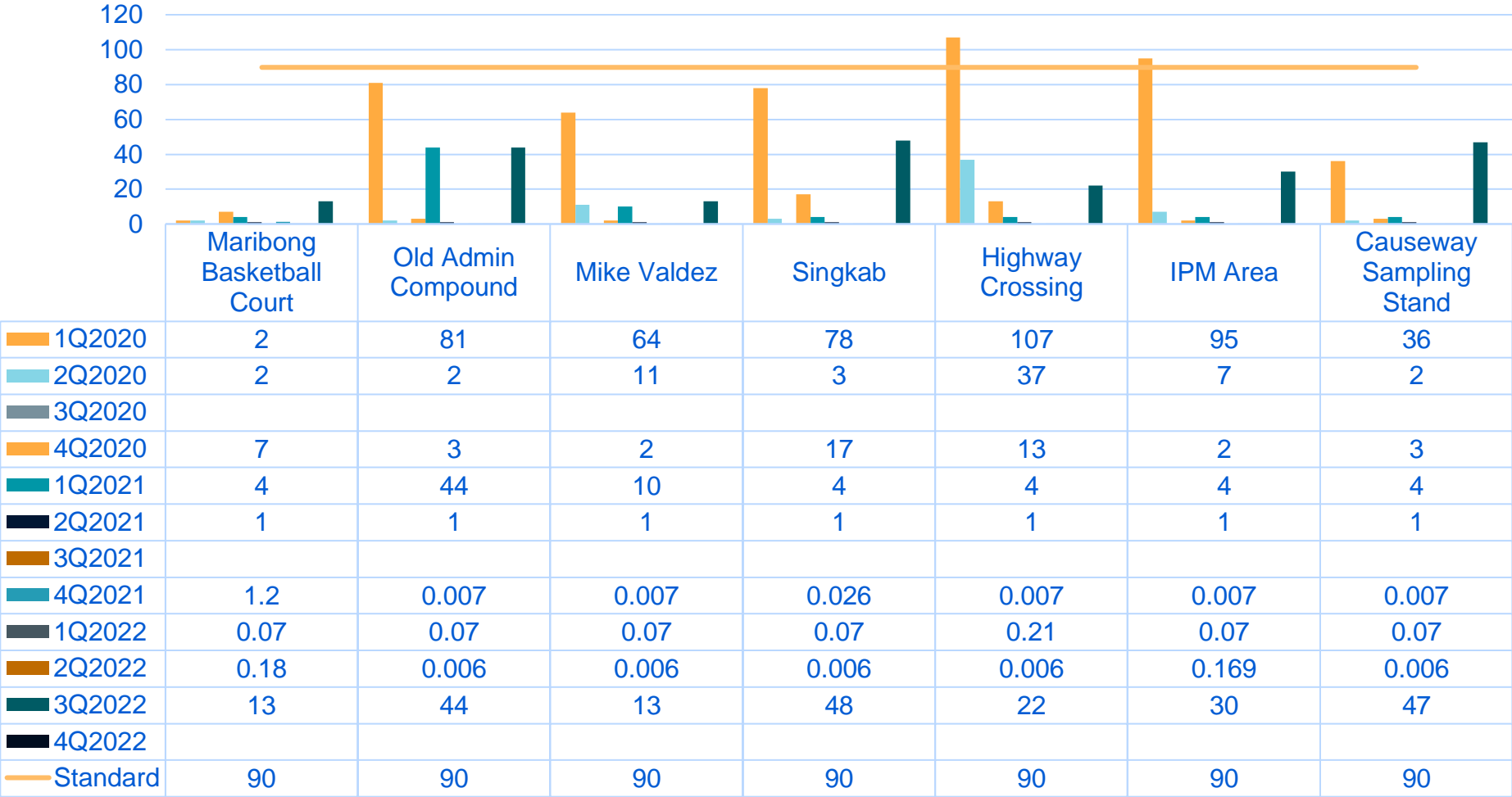


NOISE SAMPLING





Noise Quality Sampling



FINDINGS AND OBSERVATIONS

The seven (7) air ambient sampling stations and nine (9) water ambient sampling stations still have no appropriate signages.

GENERAL RECOMMENDATIONS

The proponent is advised to secure Permit to Operate for fuel depot in compliance with MC 2020-17, DAO 2000-81 of RA 8749 within one (1) year from this Monitoring period.

Reiterating to install signages in every sampling stations even during the activity, if always missing when being left. (use a “**removeable**” signage).

THANK YOU