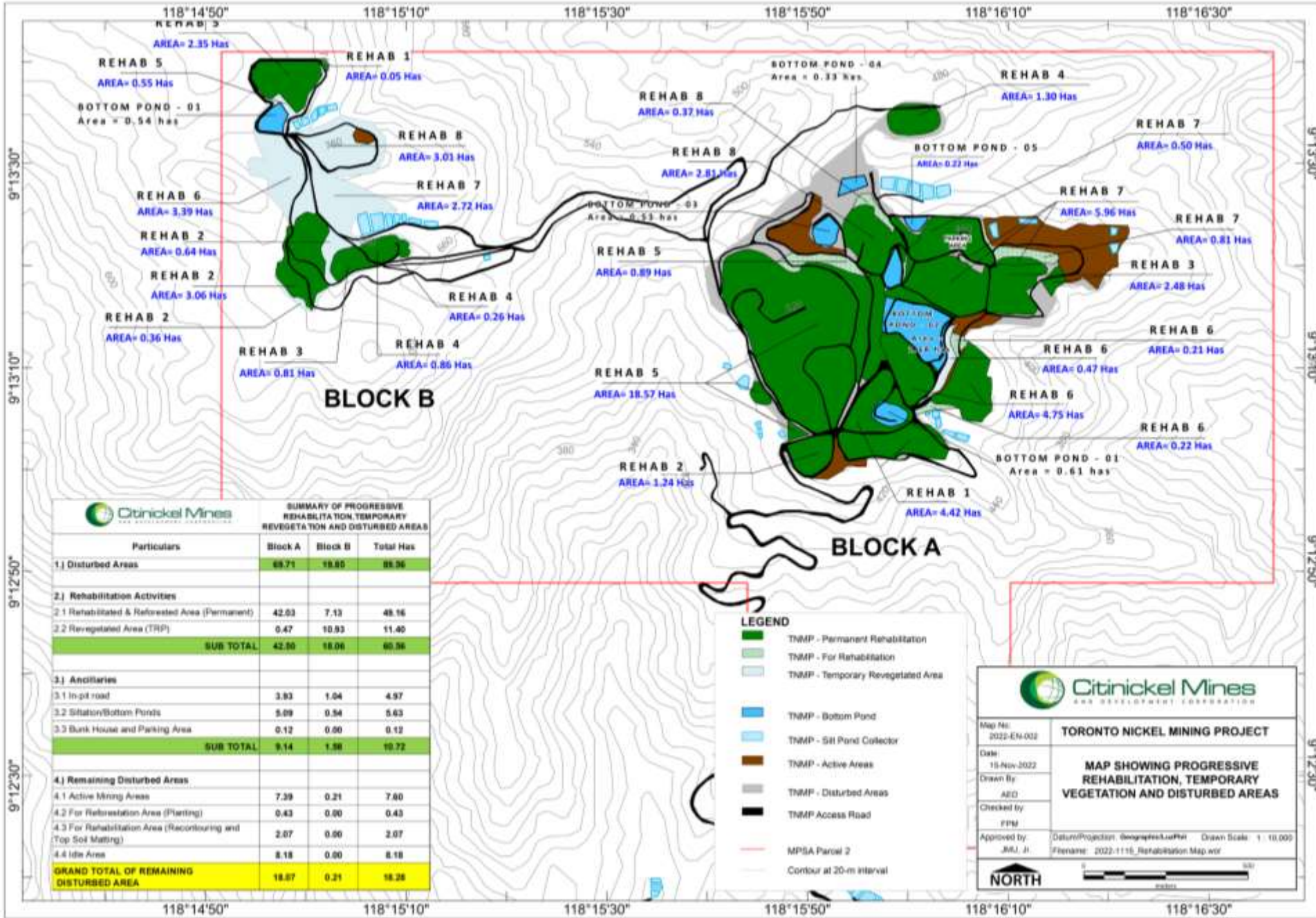


Mined-out Rehabilitation Update (4thQ2022)

December 15, 2022 | MRFC Meeting
Citinickel Mines and Development Corporation –
Toronto Nickel Mining Project



Mine Rehabilitation Areas





DAO 2018-19

“Guidelines for Additional Environmental Measures for Operating Surface Metallic Mines”

Section 5, Article d., item i.

d. Maximum Disturbed Area for Nickel Mines

- i. The maximum disturbed area for extraction of ore at any one time shall be dependent on the scale of mining operations, as follows:

Scale of Mining Operation (WMT/Year)	Maximum Disturbed Area
a. 1 Million or less	50 hectares
b. More than 1 Million but less than 3 Million	60 hectares
c. 3 Million but less than 5 Million	70 hectares
d. 5 Million but less than 7 Million	80 hectares
e. 7 Million but less than 9 Million	90 hectares
f. 9 Million and up	100 hectares

For projects that have a processing plant or those with long term supply agreement with domestic processing plant, the maximum disturbed area for extraction shall be one hundred sixty-two (162) hectares or two (2) meridional blocks.

Areas utilized for ancillary facilities, such as settling ponds, stock yards, sumps, motorpools, administrative offices, and other similar facilities, shall not be included in the above maximum disturbed area limit; and



Summary

DISTURBED AREAS		
Particular		
Rehabilitated Areas	42.22%	
Revegetated Area (TRP)	6.17%	
Ancillaries	21.96%	
For Refo & Rehabilitation	15.76%	
Remaining Disturbed Areas	13.89%	
TOTAL	100.00%	

Particular	TNMP, Ha.	PNMP, Ha.
MPSA	768	1,408
Total Disturbed Areas	89.56	111.58
Undisturbed Areas	678.44	1,296.42
% of Disturbed areas	11.66%	7.92%

SUMMARY OF PROGRESSIVE REHABILITATION, TEMPORARY REVEGETATION AND DISTURBED AREAS OF CITINICKEL MINES AND DEVELOPMENT CORPORATION (CMDc)

(As of November 15, 2022)

[illegible]



Summary of Mine Rehabilitated Areas

(as of November 15, 2022)

Year	Area (Name)	Area (has.)	Species Planted
2012, 2019	Block A Rehabilitation 1	4.42	Narra, Agoho, Ipil, Moning, Duguan, Kansilay, Batino, Kawayan-Tinik, Ipil
2012	Block A Rehabilitation 2	1.24	Narra, Agoho, Ipil
2015, 2019, July 2020	Block A Rehabilitation 3	2.48	Agoho, Batino, Maladuhad, Malakatmon, Malapapaya, Kawayan-tinik
2015, 2016, 2017	Block A Rehabilitation 4	1.30	Agoho, Narra, Ipil, Batino
2016, 2017, 2019, 2020, January & September 2021, June 2022	Block A Rehabilitation 5	18.57	Agoho, Apitong-Baboy, Apian, Batino, Bunot-bunot, Butterfly Tree, Ipil, Malabayabas, Maladuhad, Malapapaya, Moning, Narra, Nato, Palomaria, Sandana, Supa, Udling, Fruit Trees (Bayabas, Duhat, Sampalok)
2016, 2017, 2018, 2022	Block A Rehabilitation 6	4.75	Agoho, Dita, Duguan, Narra, Ipil, Batino, Malapapaya, Moning, Mosquito Tree, Udling, Palawan Cherry, Palomaria, Grass
2017, 2018, 2021, 2022	Block A Rehabilitation 7	6.46	Agoho, Batino, Maladuhad, Udling, Palawan Cherry, Fire Tree, Narra, Palomaria, Supa
2019, 2022	Block A Rehabilitation 8	2.81	Agoho, Batino, Kandis, Malapapaya, Mancono, Nato, Sandana, Udling, Kawayan-tinik
SUB-TOTAL		42.03	
2016	Block B Rehabilitation 1	0.05	Agoho, Narra, Coffee
2017, 2018	Block B Rehabilitation 2	3.06	Agoho, Udling, Batino, Duguan
2017	Block B Rehabilitation 3	0.81	Agoho
2016	Block B Rehabilitation 4	0.86	<i>Acacia mangium</i> , Agoho, Narra
2016, 2020 (enrichment)	Block B Rehabilitation 5	2.35	<i>Acacia auriculiformis</i> , Moning, Narra, Batino, Udling
SUB TOTAL		7.13	
GRAND TOTAL		49.16	

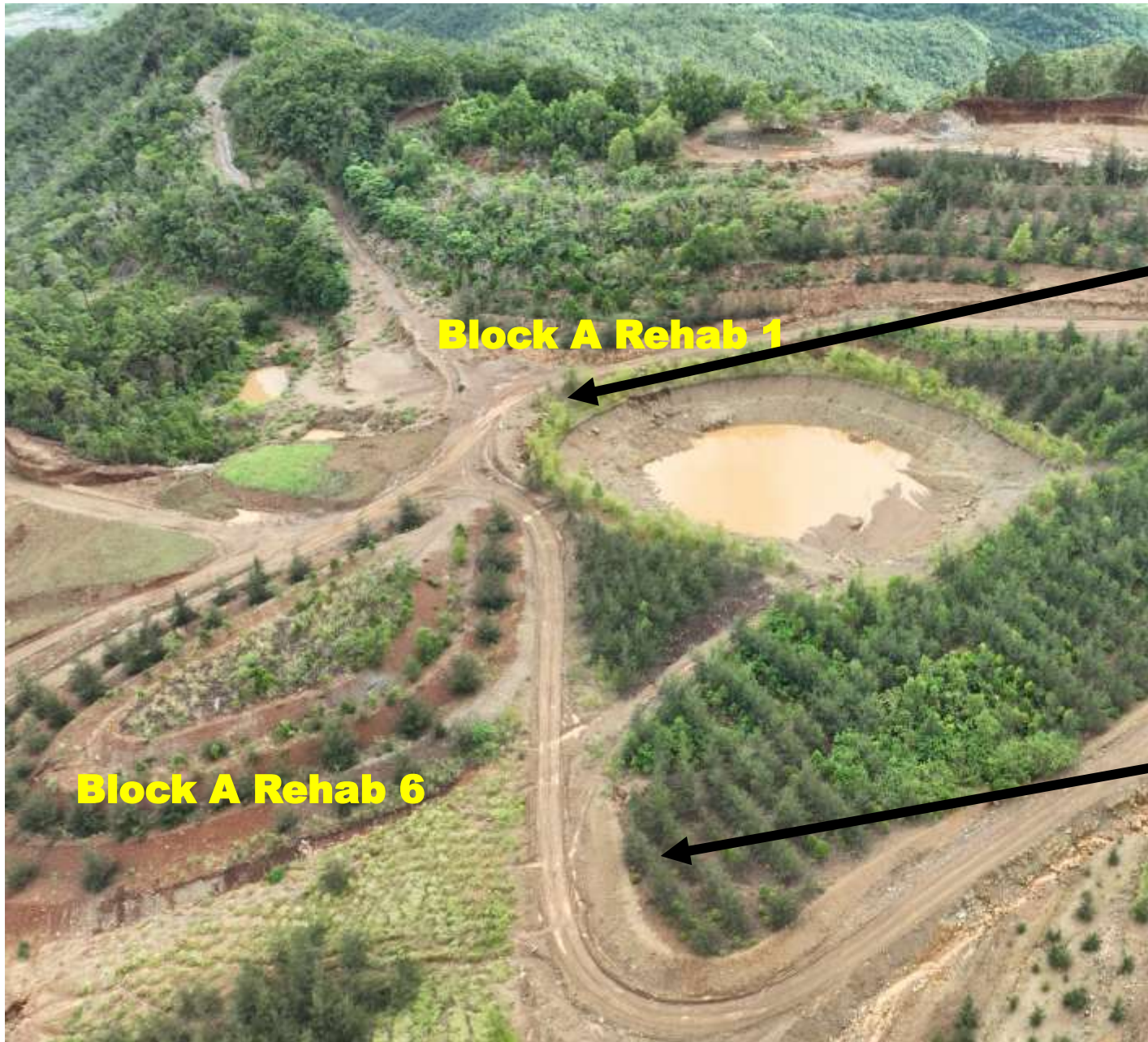
BLOCK A MINE REHABILITATION AREA



BLOCK A MINE REHABILITATION AREA



BLOCK A MINE REHABILITATION AREA

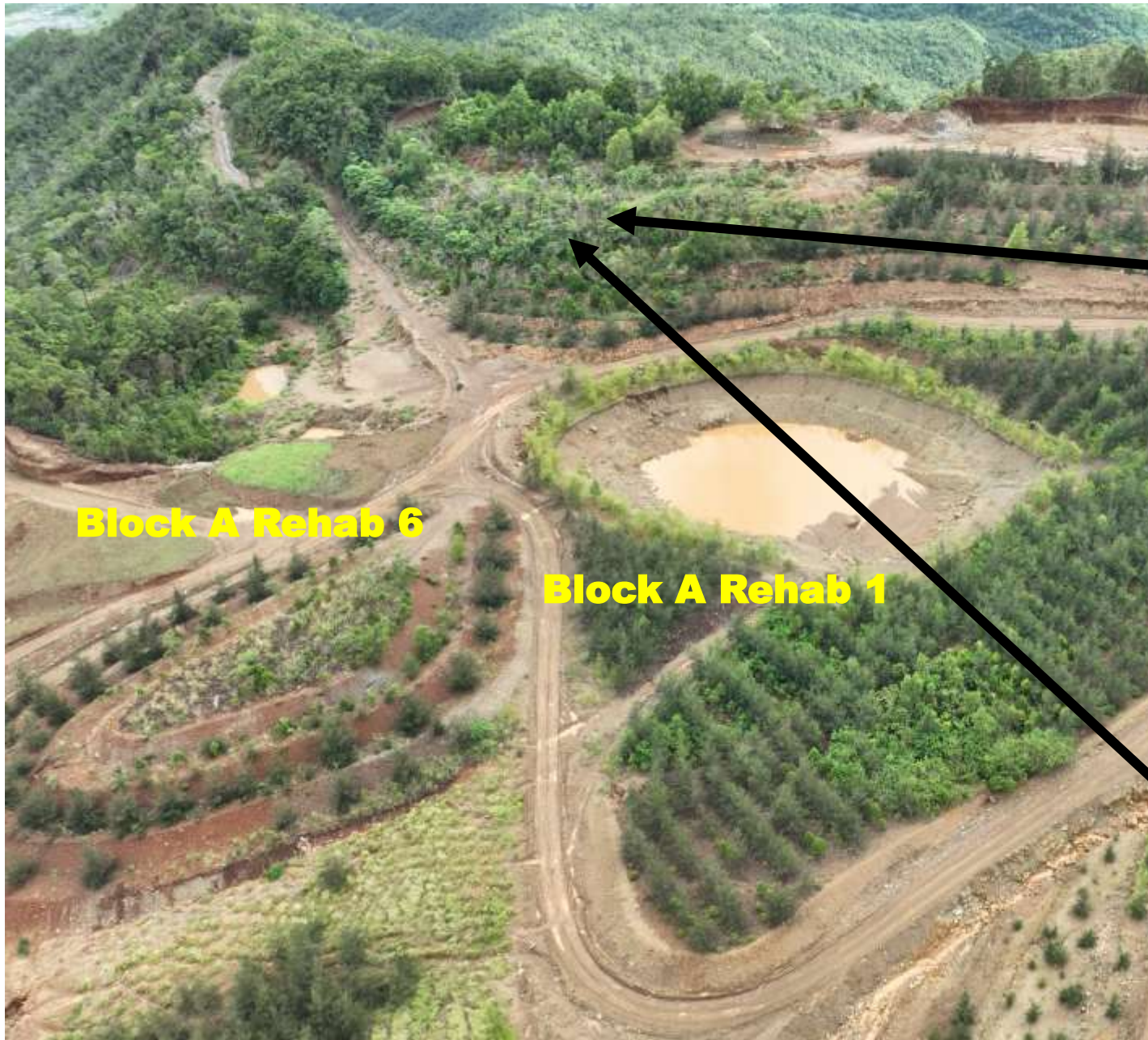


Block A Rehab 1

Block A Rehab 6



BLOCK A MINE REHABILITATION AREA



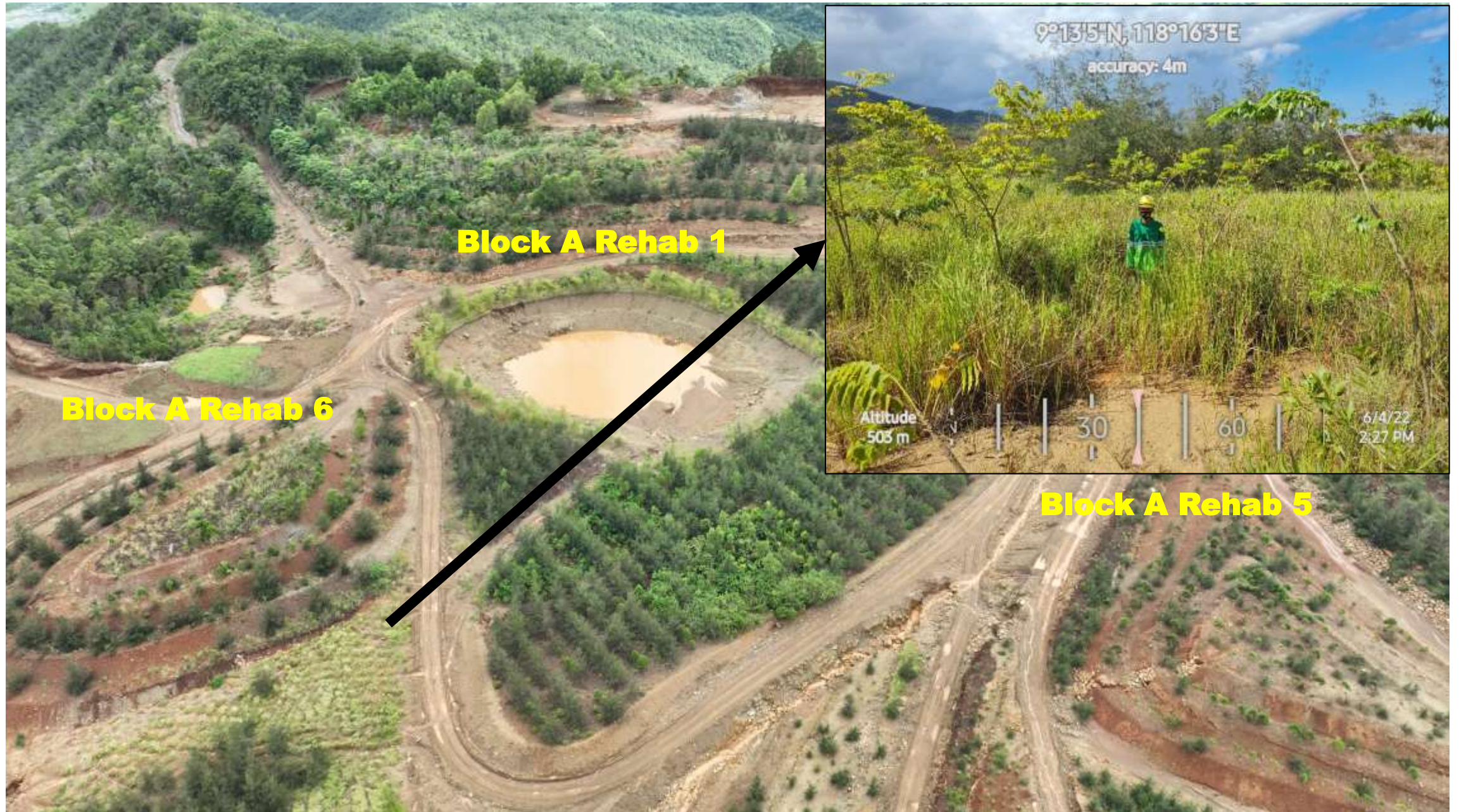
BLOCK A MINE REHABILITATION AREA



Block A Rehab 1



BLOCK A MINE REHABILITATION AREA



BLOCK A MINE REHABILITATION AREA



Block A Rehab 4

BLOCK A MINE REHABILITATION AREA



BLOCK A MINE REHABILITATION AREA



BLOCK A MINE REHABILITATION AREA



BLOCK A MINE REHABILITATION AREA



Block A Rehab 7

Block A Rehab 8

Block A Rehab 5

BLOCK A MINE REHABILITATION AREA



Block A Rehab 5

BLOCK A MINE REHABILITATION AREA



September 2022



December 2022

BLOCK A MINE REHABILITATION AREA



BLOCK A MINE REHABILITATION AREA

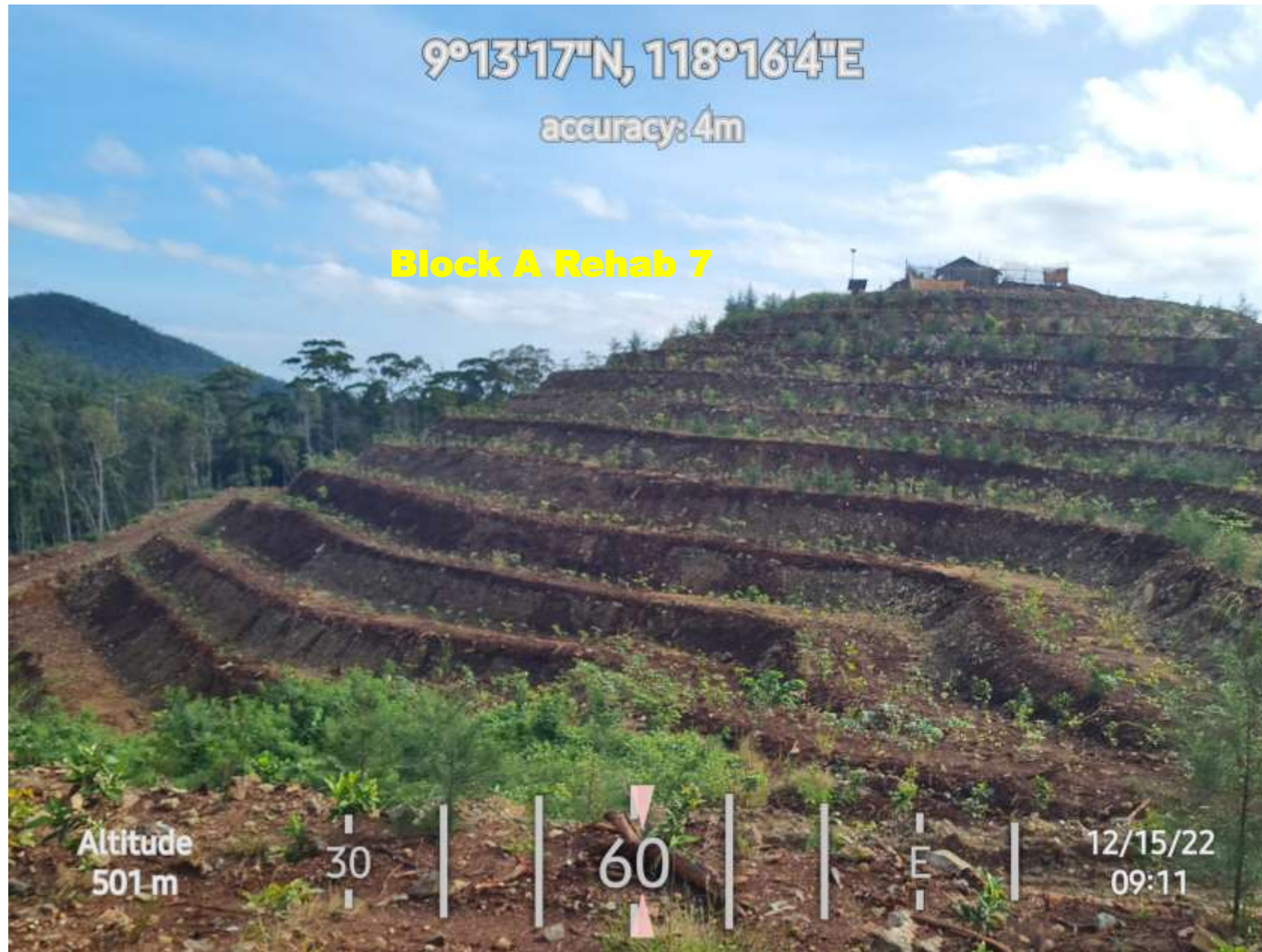


Block A Rehab 7

BLOCK A MINE REHABILITATION AREA



BLOCK A MINE REHABILITATION AREA



BLOCK A MINE REHABILITATION AREA



BLOCK A MINE REHABILITATION AREA



BLOCK A MINE REHABILITATION AREA



Block A Rehab 8

BLOCK B MINE REHABILITATION AREA



BLOCK B MINE REHABILITATION AREA



BLOCK B MINE REHABILITATION AREA



BLOCK B MINE REHABILITATION AREA



Block B Rehab 1

Block B Rehab 5

9°13'36"N, 118°15'5"E
accuracy: 4m

Altitude 814 m | S | 210 | 12/13/22 10:48

9°13'29"N, 118°15'3"E
accuracy: 4m

Altitude 794 m | N | 30 | 12/13/22 10:52



BLOCK B MINE REHABILITATION AREA



Block B Rehab 3

Block B Rehab 2

Block B Rehab 2 TRP

BLOCK B MINE REHABILITATION AREA





NEXT