



Citinickel Mines
AND DEVELOPMENT CORPORATION

PULOT NICKEL MINING PROJECT
Sofronio Española, Palawan 5324

Mining Forest Program

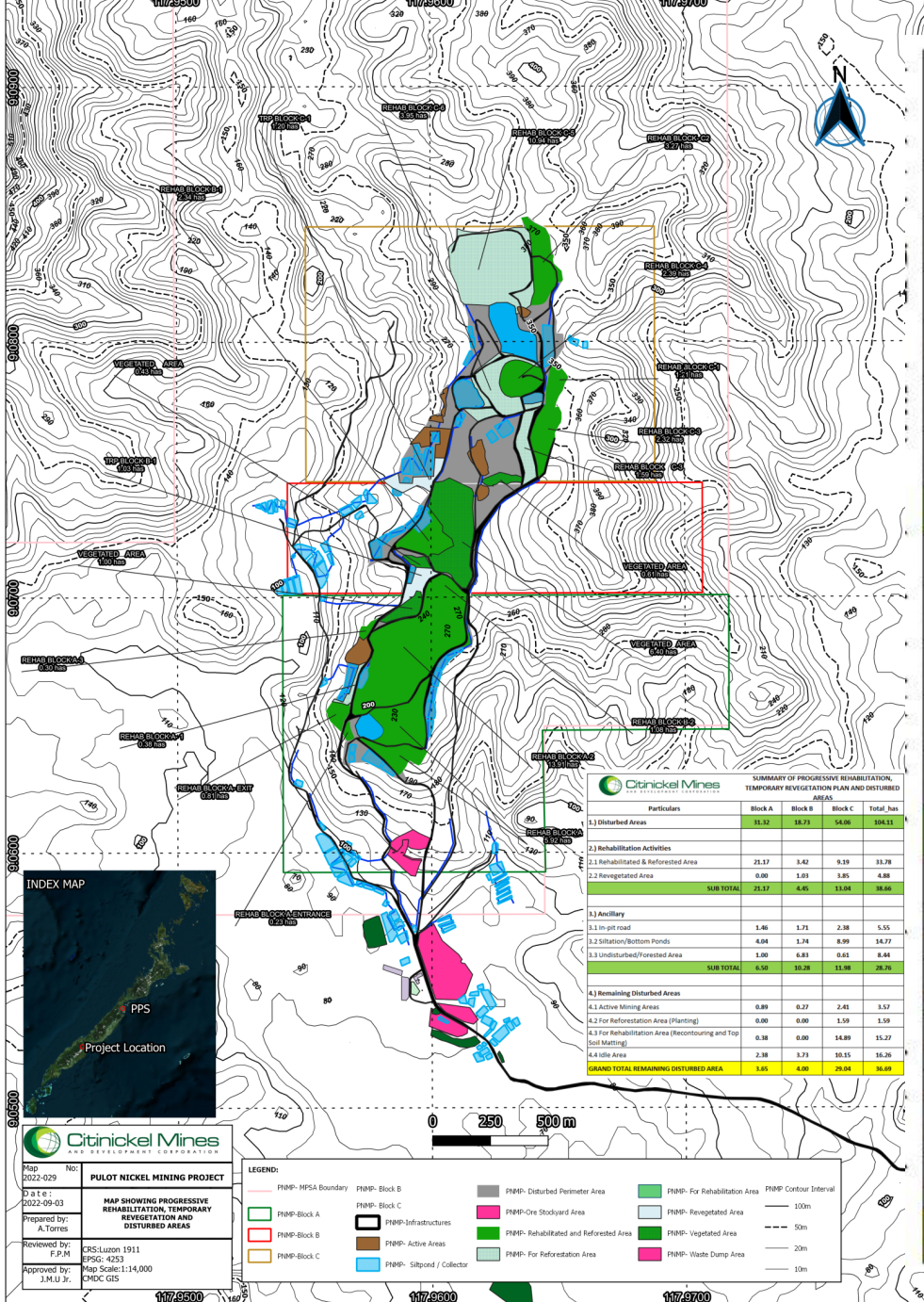
3rd Quarter 2022 Status

July to September 2022

CMDC

SUMMARY OF PROGRESSIVE REHABILITATION, TEMPORARY REVEGETATION PLAN AND DISTURBED AREAS

Particulars	Block A	Block B	Block C	Total_has
1.) Disturbed Areas	31.32	18.73	54.06	104.11
2.) Rehabilitation Activities				
2.1 Rehabilitated & Reforested Area	21.17	3.42	9.19	33.78
2.2 Revegetated Area	0.00	1.03	3.85	4.88
SUB TOTAL	21.17	4.45	13.04	38.66
3.) Ancillary				
3.1 In-pit road	1.46	1.71	2.38	5.55
3.2 Siltation/Bottom Ponds	4.04	1.74	8.99	14.77
3.3 Undisturbed/Forested Area	1.00	6.83	0.61	8.44
SUB TOTAL	6.50	10.28	11.98	28.76
4.) Remaining Disturbed Areas				
4.1 Active Mining Areas	0.89	0.27	2.41	3.57
4.2 For Reforestation Area (Planting)	0.00	0.00	1.59	1.59
4.3 For Rehabilitation Area (Recontouring and Top Soil Matting)	0.38	0.00	14.89	15.27
4.4 Idle Area	2.38	3.73	10.15	16.26
GRAND TOTAL REMAINING DISTURBED AREA	3.65	4.00	29.04	36.69





PULOT NICKEL MINING PROJECT
Sofronio Española, Palawan 5324

MINING FOREST PROGRAM





Citinickel Mines
AND DEVELOPMENT CORPORATION

PULOT NICKEL MINING PROJECT
Sofronio Española, Palawan 5324

MINING FOREST PROGRAM

Location: Block A- Entrance rehabilitation

Date planted: September 23, 2015

Area Planted: 0.26 has

No. of seedlings Planted: 1,056 seedlings.

Species Planted: Acacia, Kamagong, Lambunao, Amugis, Bunog



Block A Entrance- Drone Shot

CMDCC



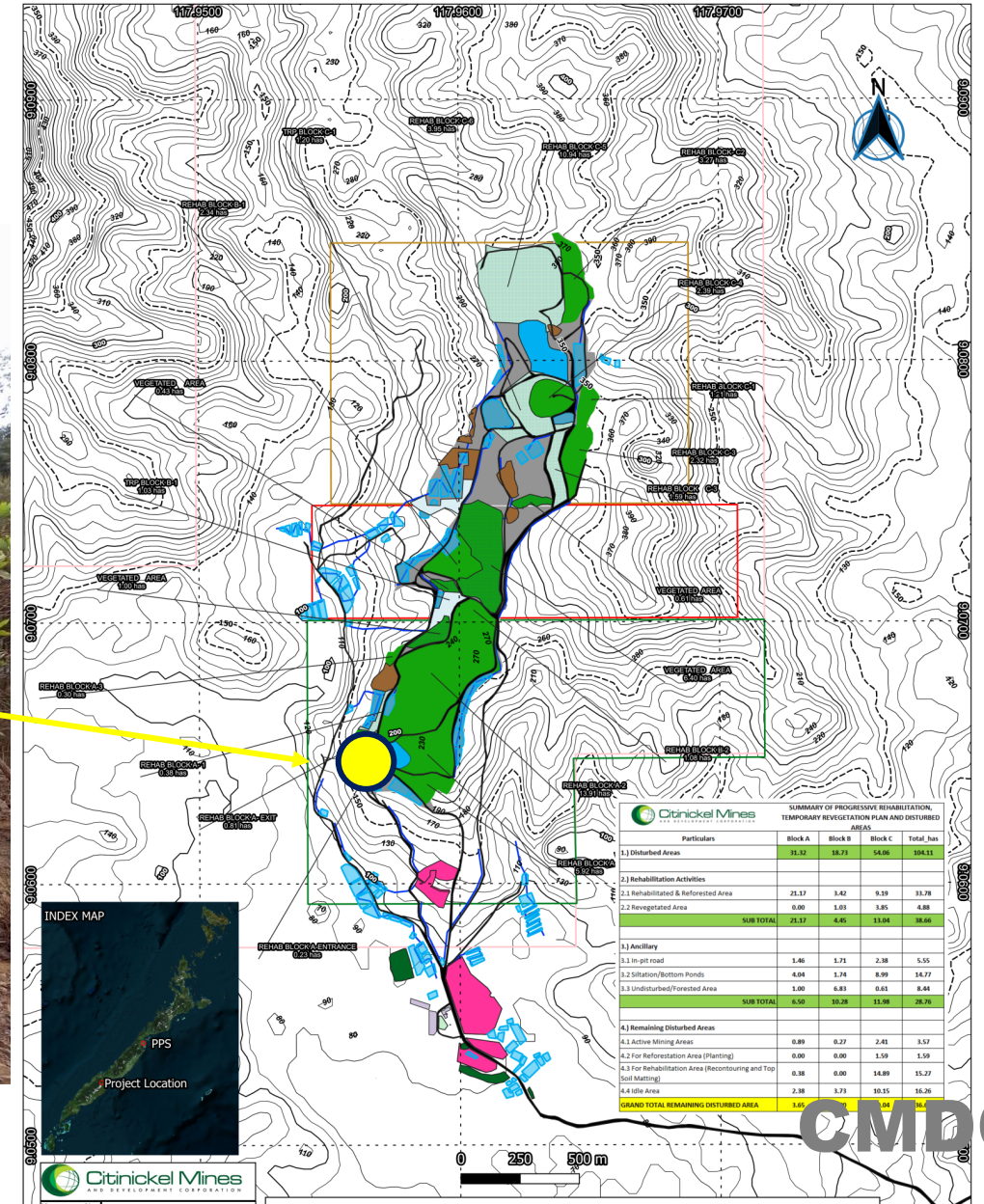
Citinickel Mines
AND DEVELOPMENT CORPORATION

PULOT NICKEL MINING PROJECT
Sofronio Española, Palawan 5324

MINING FOREST PROGRAM



Block A Exit rehabilitation area





Citinickel Mines
AND DEVELOPMENT CORPORATION

PULOT NICKEL MINING PROJECT
Sofronio Española, Palawan 5324

MINING FOREST PROGRAM

Location: Block A Exit rehabilitation

Date planted: June 17, 2016

Area Planted: 0.712 has

No. of seedlings Planted: 1,463 seedlings

Species Planted: Agoho, Kupang, Kamagong, Manguim, Narra



Block A Exit- Drone Shot and panorama



CMDC



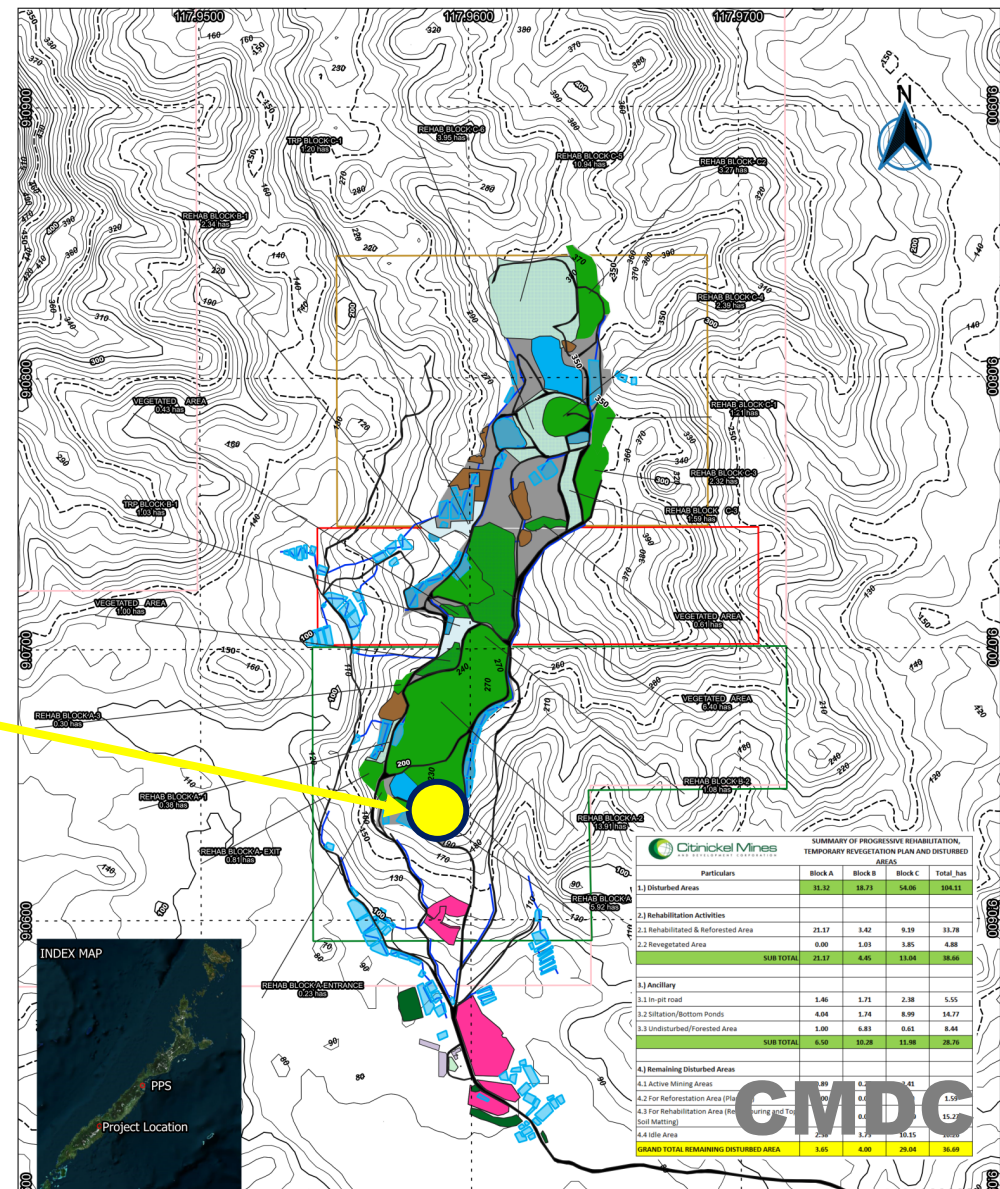
Citinickel Mines
AND DEVELOPMENT CORPORATION

PULOT NICKEL MINING PROJECT
Sofronio Española, Palawan 5324

MINING FOREST PROGRAM



Block AA rehabilitation area





Citinickel Mines
AND DEVELOPMENT CORPORATION

PULOT NICKEL MINING PROJECT
Sofronio Española, Palawan 5324

MINING FOREST PROGRAM

Location: Block AA rehabilitation

Date planted: July to September 2021

Area Planted: 2.89 has.

No. of seedlings Planted: 19,780
seedlings.

Species Planted: Agoho, Batino,
Malabayabas, Udling, Lumboy-Lumboy,
Mansalagon, Lampong, Tabingalan,
Apitong, Katumpas, Mahogany



9°3'47"N, 117°57'36"E

accuracy: 2m

Block AA rehabilitation area - Panorama



CMDC



Citinickel Mines
AND DEVELOPMENT CORPORATION

PULOT NICKEL MINING PROJECT
Sofronio Española, Palawan 5324

MINING FOREST PROGRAM

Block AA rehabilitation area

- Conducted enrichment planting of fruit bearing trees like Rambutan, Marang, Durian and Lansones
- A total of 213 fruit bearing trees was planted last July 2022
- Application of Chicken dungs



Enrichment planting of fruit
bearing trees

Application of chicken dungs to
enhance growth performance
of planted trees



CMDC



Citinickel Mines AND DEVELOPMENT CORPORATION

PULOT NICKEL MINING PROJECT
Sofronio Española, Palawan 5324

9°3'56"N, 117°57'39"E

accuracy: 2m



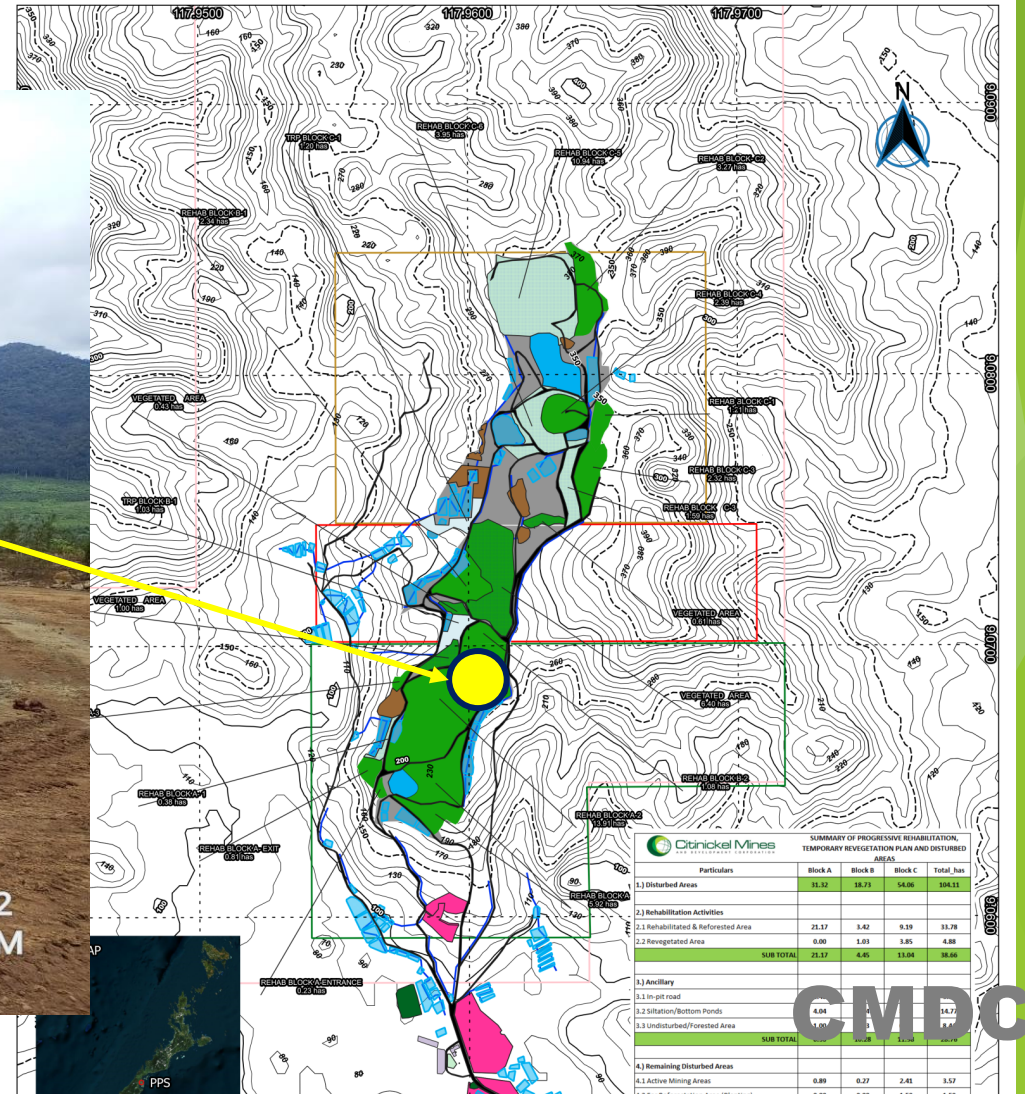
-30

N

30

7/19/22
11:21 AM

Block A-1 rehabilitation area



CMDC



Citinickel Mines
AND DEVELOPMENT CORPORATION

PULOT NICKEL MINING PROJECT
Sofronio Española, Palawan 5324

MINING FOREST PROGRAM

Location: Block A-1 rehabilitation

Date planted: September 26, 2017 to September 26, 2020

Area Planted: 3.03 has.

No. of Trees Planted: 6,636 seedlings

Trees Planted: Agoho, Batino, Bunog, Kupang, Lambunao, Lumboy2x, Marang, Narra, Panasan, Rapitik



Block A-1 rehabilitation area - Drone Shot

CMDC



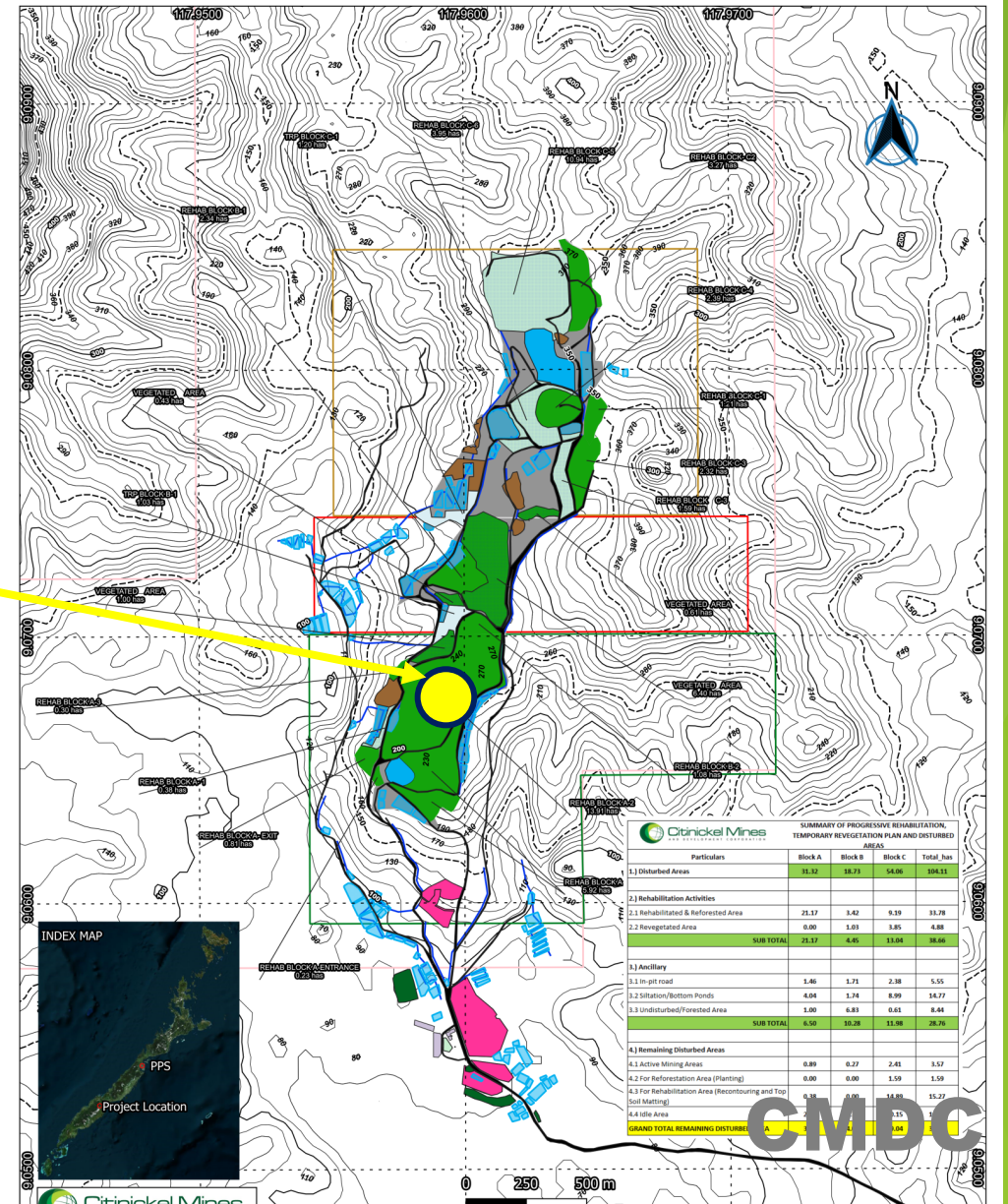
Citinickel Mines
AND DEVELOPMENT CORPORATION

PULOT NICKEL MINING PROJECT
Sofronio Española, Palawan 5324

MINING FOREST PROGRAM



Block A-2 rehabilitation area





Citinickel Mines
AND DEVELOPMENT CORPORATION

PULOT NICKEL MINING PROJECT
Sofronio Española, Palawan 5324

MINING FOREST PROGRAM

Location: Block A-2 rehabilitation

Date planted: July 2013 to December 2019

Area Planted: 13.91 has.

No. of Trees Planted: 40,071 seedlings

Trees Planted: Agoho, Apitong, Bunog, Kupang, Lambunao, Lumboy2x, Maguim, Narra, P. Cherry, Rapitik, Tabingalan, Nato, kamagong,



Block A-2 rehabilitation area - Drone Shot

CMDC



Citinickel Mines
AND DEVELOPMENT CORPORATION

PULOT NICKEL MINING PROJECT
Sofronio Española, Palawan 5324

MINING FOREST PROGRAM

9°4'15"N, 117°57'35"E

accuracy: 1m



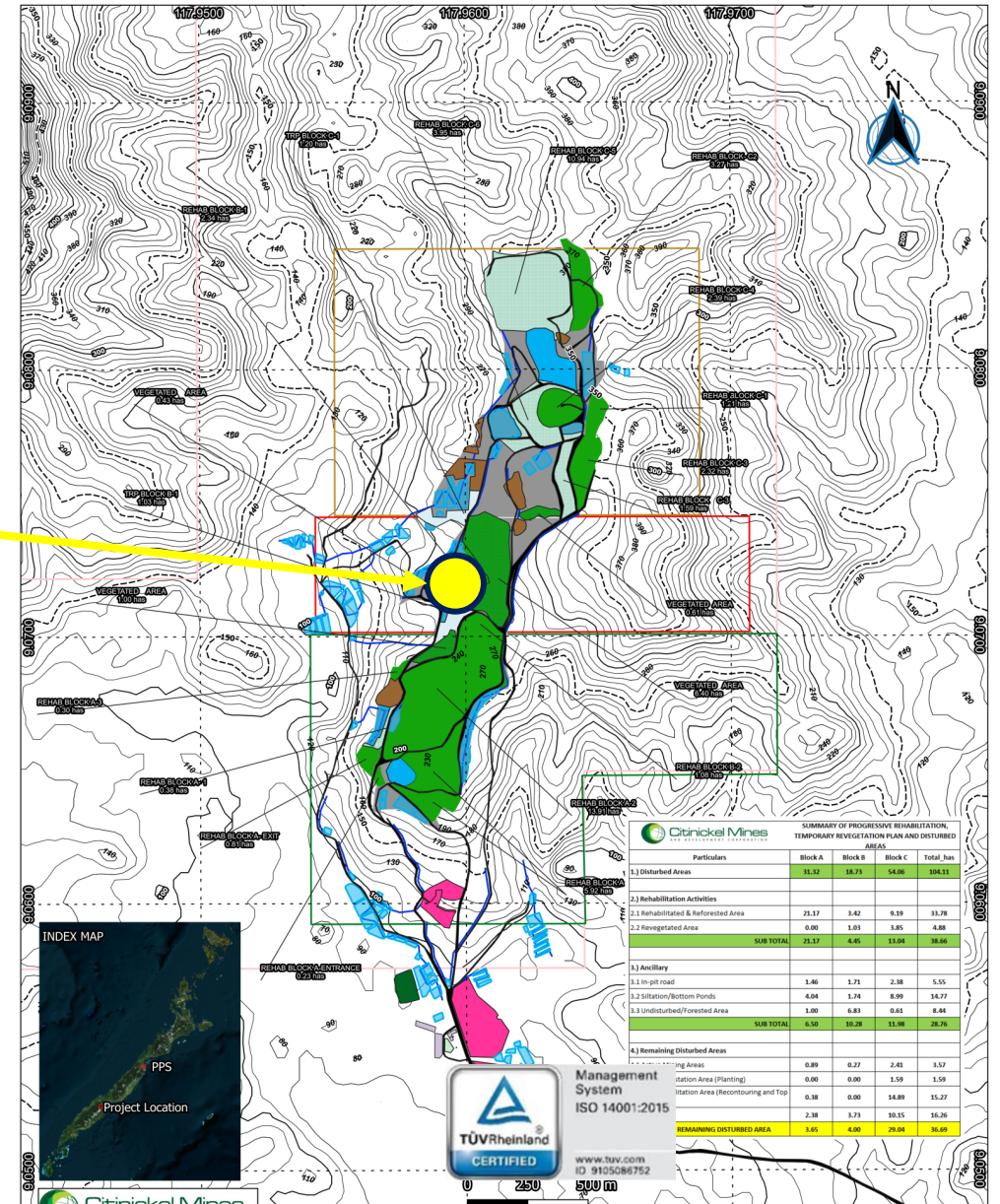
-30



30

7/18/22
11:20 AM

Block B-1 rehabilitation area





Citinickel Mines
AND DEVELOPMENT CORPORATION

PULOT NICKEL MINING PROJECT
Sofronio Española, Palawan 5324

MINING FOREST PROGRAM

Location: Block B-1 rehabilitation

Date planted: August 2020

Area Planted: 2.34 has

No. of seedlings Planted: 6,800 seedlings

Species Planted: Nato, Batino, Malabayabas

9°4'15"N, 117°57'35"E

accuracy: 2m



Block B-1 rehabilitation area - Panorama

CMDRC



Citinickel Mines
AND DEVELOPMENT CORPORATION

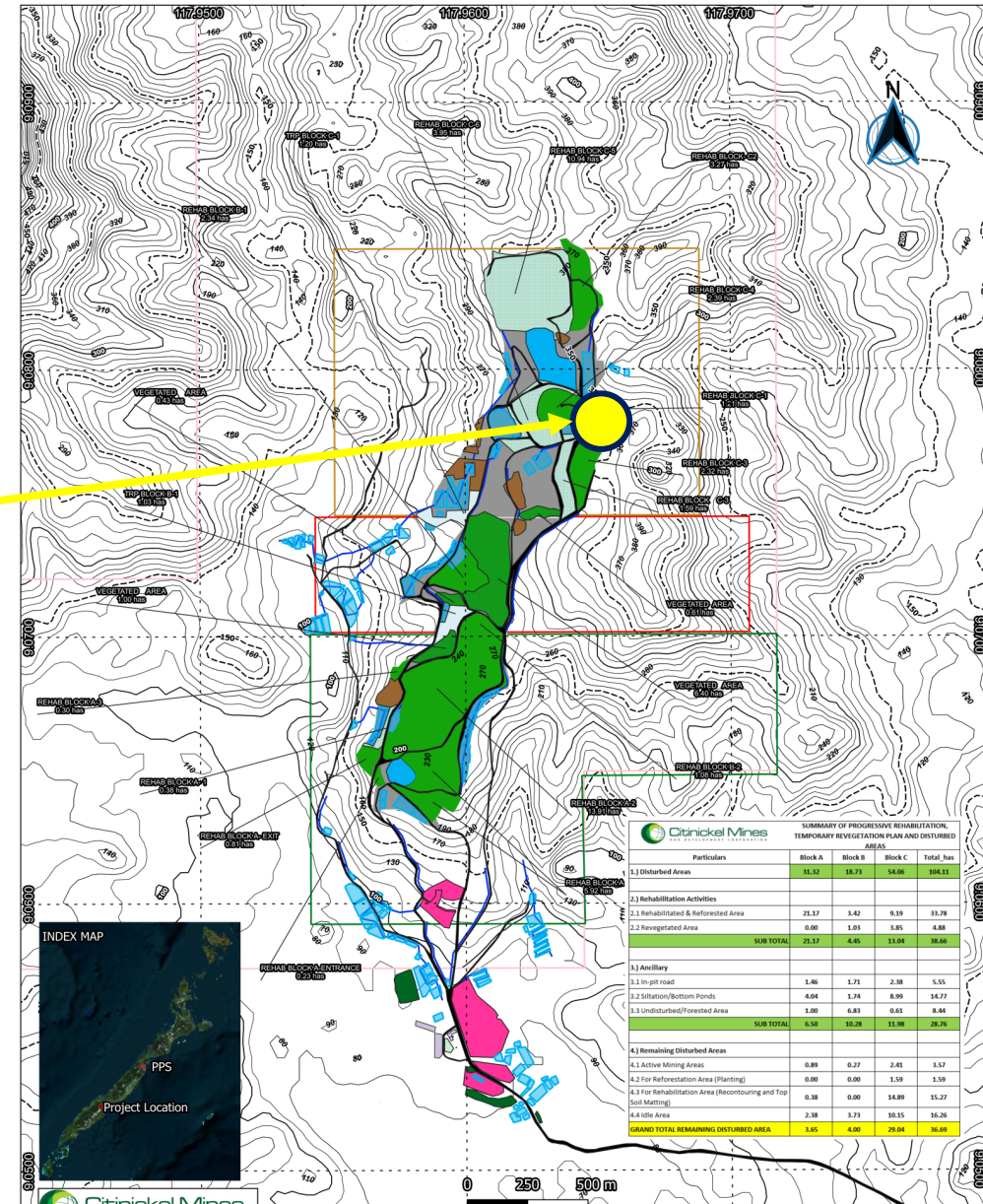
PULOT NICKEL MINING PROJECT
Sofronio Española, Palawan 5324

MINING FOREST PROGRAM

9°4'35"N, 117°57'57"E
accuracy: 2m



Block C-1 rehabilitation area





Citinickel Mines
AND DEVELOPMENT CORPORATION

PULOT NICKEL MINING PROJECT
Sofronio Española, Palawan 5324

MINING FOREST PROGRAM

Location: Block C-1 rehabilitation

Date planted: September 2018

Area Planted: 1.20 has

No. of seedlings Planted: 3,400 seedlings

Species Planted: Agoho, Narra, Batino, Lambunao, Ipil



Block C-1 rehabilitation area - Drone Shot



CMDC



Citinickel Mines
AND DEVELOPMENT CORPORATION

PULOT NICKEL MINING PROJECT
Sofronio Española, Palawan 5324

MINING FOREST PROGRAM

9°4'55"N, 117°57'55"E

accuracy: 6m

Citinickel Mines
MINING FOREST PROGRAM
Species Planted: Agoho, Apitong, Pines, Lamban, Lumbay, Lumbay, Napang, Kanasan, Herry, Manang, Mat, Tolomon cherry, Bayogon, Tabanob, Fire Tree
No. of Seedling Planted: 6,762 pcs
Spacing: 1m X 1m
Planted Area: 3.10 Hectares
Location: Block C
Date Planted: September 20, 2016 - February 10, 2017
Coordinates: 9°4'55"N, 117°57'55"E

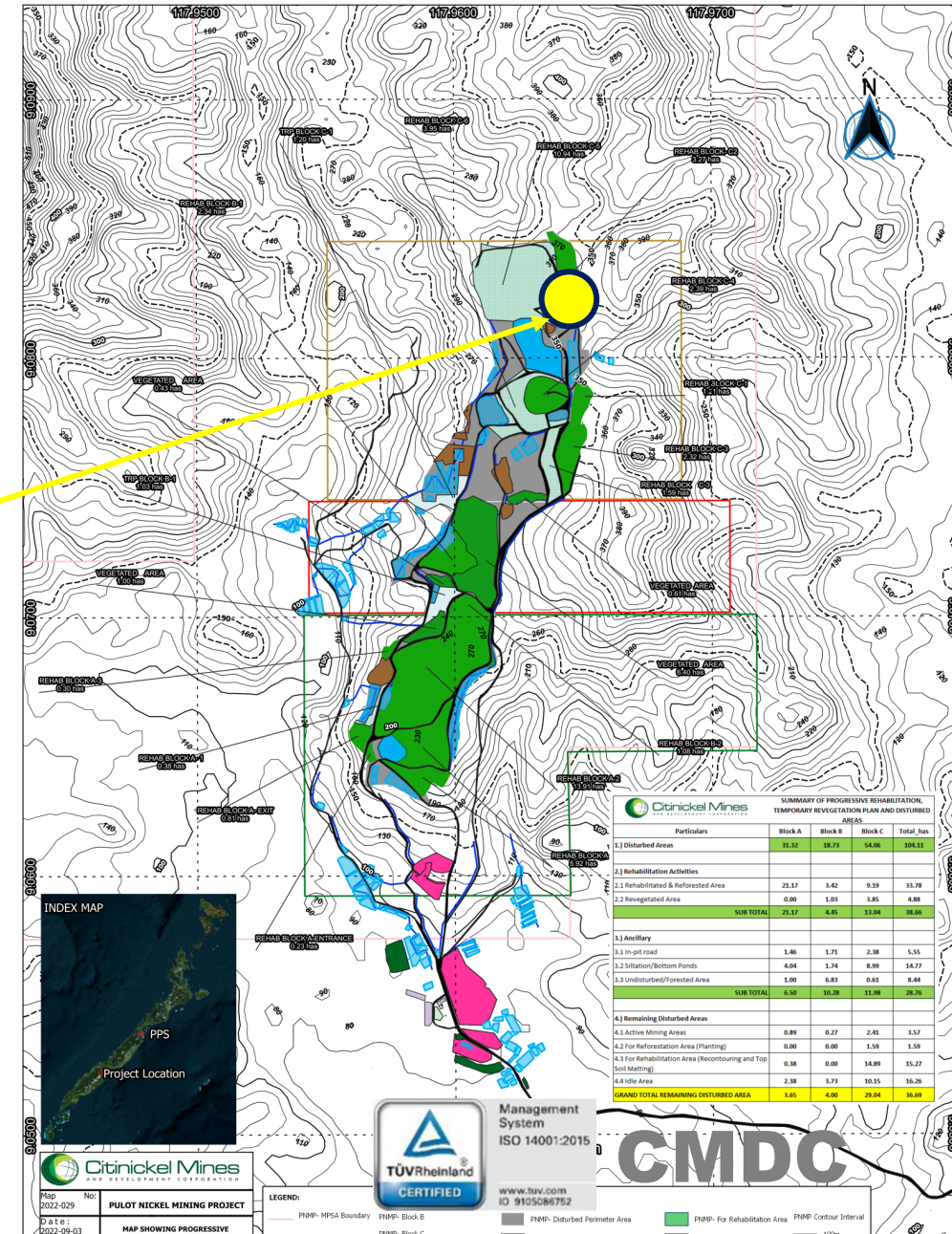
-30

N

30

9/6/22
10:36 AM

Block C-2 rehabilitation area





Citinickel Mines
AND DEVELOPMENT CORPORATION

PULOT NICKEL MINING PROJECT
Sofronio Española, Palawan 5324

MINING FOREST PROGRAM

Location: Block C-2 rehabilitation

Date planted: September 2016 to
February 10, 2017

Area Planted: 3.27 has

No. of seedlings Planted: 6,962 seedlings

Species Planted: Agoho, Apitong, Bunog,
Lambunao, Lumboy2x, Kupang,
Kamagong, Narra, Manguim



Block C-2 rehabilitation area - Drone Shot Panoramic view

CMDC



Citinickel Mines
AND DEVELOPMENT CORPORATION

PULOT NICKEL MINING PROJECT
Sofronio Española, Palawan 5324

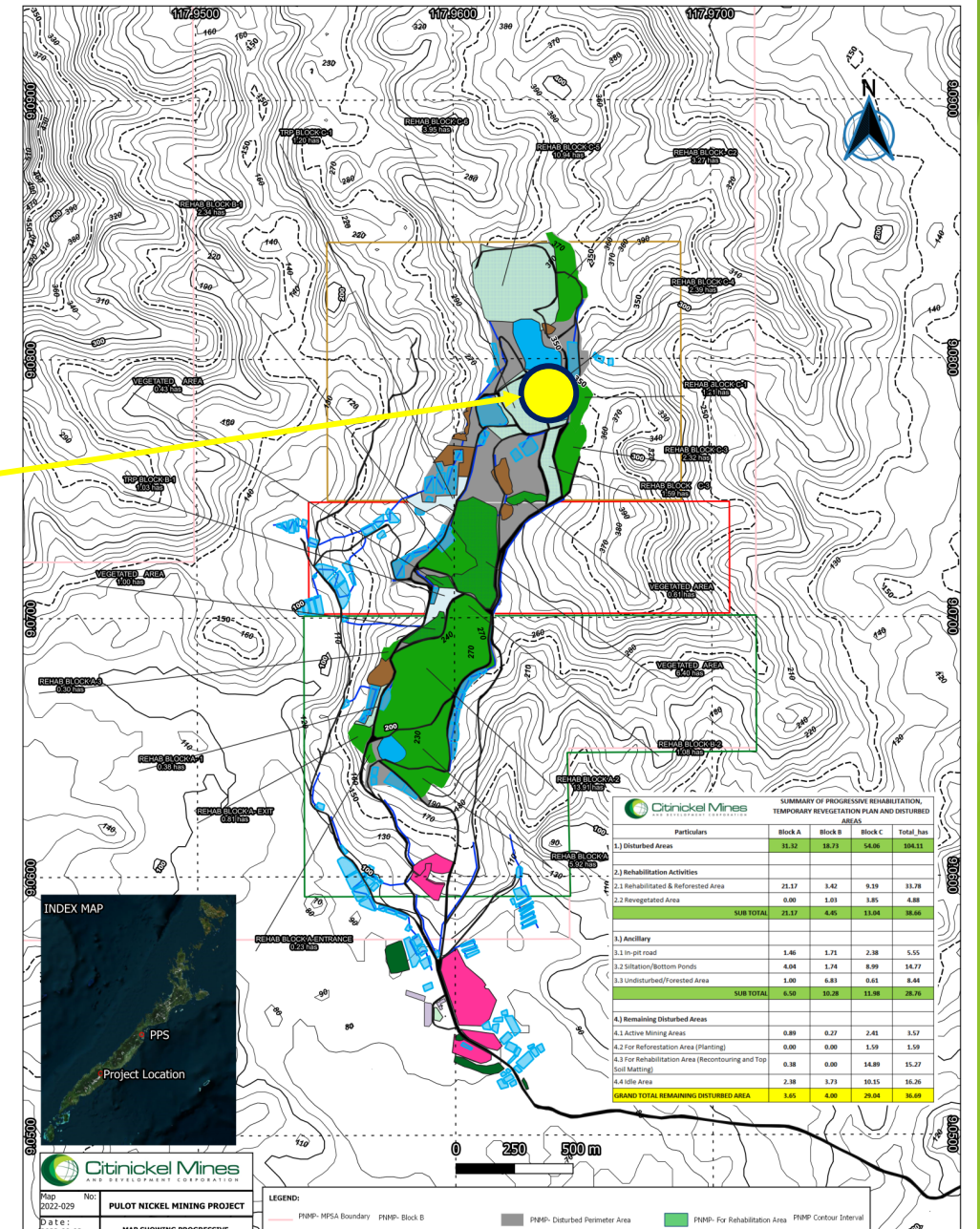
MINING FOREST PROGRAM

9°4'17"N, 117°57'45"E



8/31/22
9:35 AM

Block C-4 rehabilitation area





Citinickel Mines
AND DEVELOPMENT CORPORATION

PULOT NICKEL MINING PROJECT
Sofronio Española, Palawan 5324

MINING FOREST PROGRAM

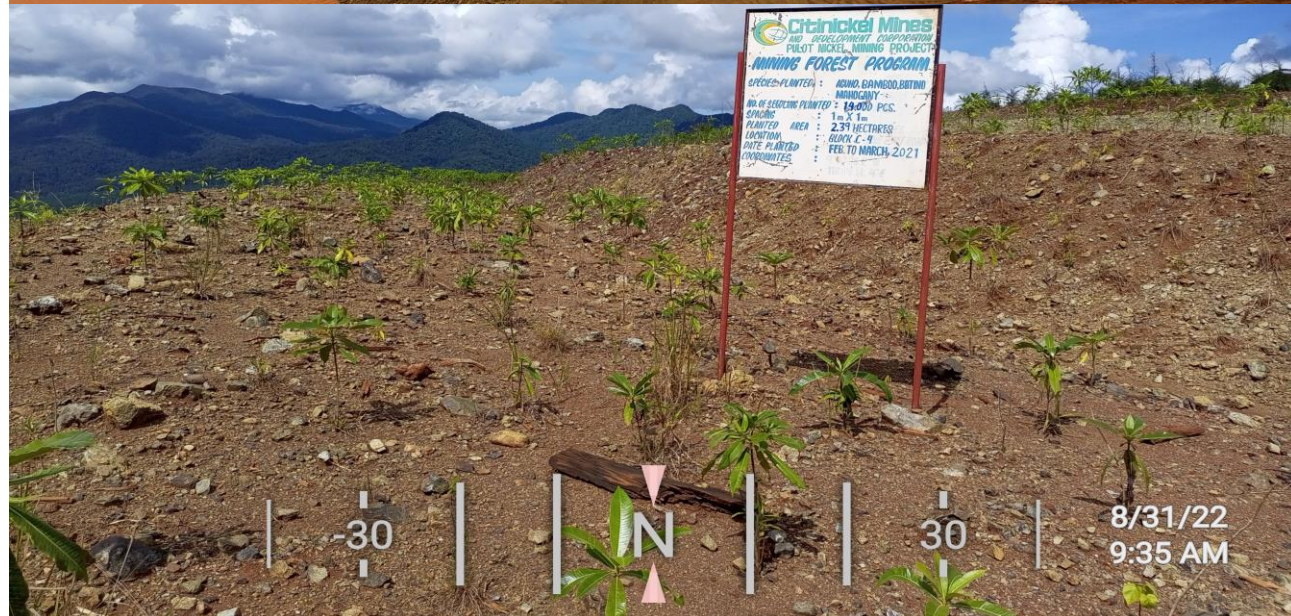
Location: Block C-4 rehabilitation

Date planted: February to March 2021

Area Planted: 2.39 has

No. of seedlings Planted: 14,000 seedlings

Species Planted: Agoho, Mahogany, Batino, Ipil-ipil, Nato



Block C-4 rehabilitation area -
Panoramic view

CMDRC



Citinickel Mines
AND DEVELOPMENT CORPORATION

PULOT NICKEL MINING PROJECT
Sofronio Española, Palawan 5324

MINING FOREST PROGRAM

Block C4 rehabilitation area

- Conducted enrichment planting of rehabilitation sloping area, a total 2,123 of maladuhat was planted.



Enrichment planting in block
C4 sloping area



CMDC



Citinickel Mines
AND DEVELOPMENT CORPORATION

PULOT NICKEL MINING PROJECT
Sofronio Española, Palawan 5324

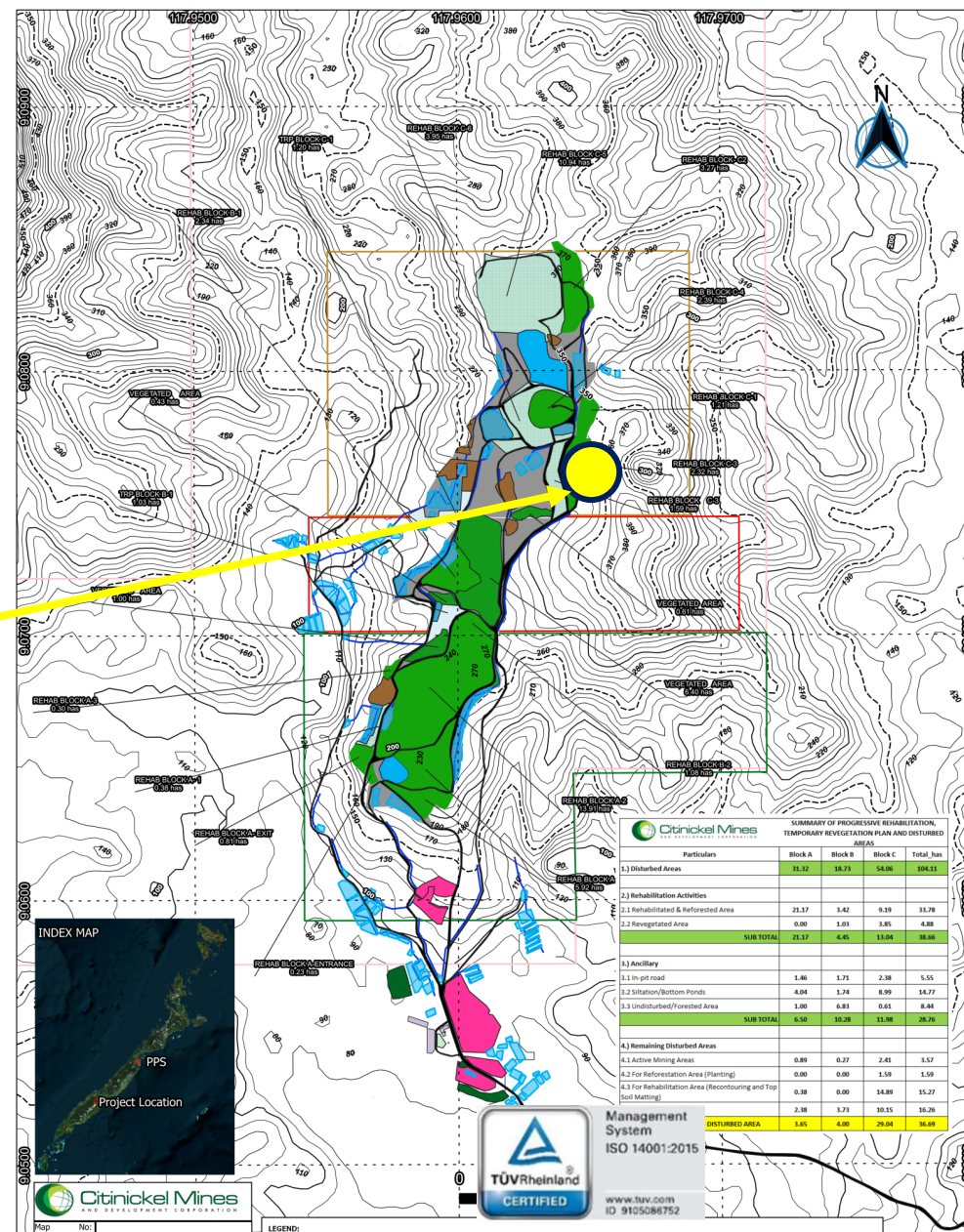
MINING FOREST PROGRAM

9°4'29"N, 117°57'55"E

accuracy: 3m



Block C-3 rehabilitation area





Citinickel Mines
AND DEVELOPMENT CORPORATION

PULOT NICKEL MINING PROJECT
Sofronio Española, Palawan 5324

MINING FOREST PROGRAM

Location: Block C-3 rehabilitation

Date planted: November 2021 to March 2022

Area Planted: 2.32 has

No. of seedlings Planted: 13,645 seedlings

Species Planted: Batino, Lumboy2x, Mahogany, Lampong, Nato, Udling, Agoho, Napier, Malabayabas



Block C-3 rehabilitation area - Panoramic view

CMDRC



Citinickel Mines
AND DEVELOPMENT CORPORATION

PULOT NICKEL MINING PROJECT
Sofronio Española, Palawan 5324

MINING FOREST PROGRAM

Block C3 rehabilitation area

- Conducted enrichment planting of rehabilitation sloping area, a total 6,582 of batino, maladuhat, mansalagon, nato, putian, tabingalan and agoho was planted.



Enrichment planting in block
C3 sloping area



Citinickel Mines
AND DEVELOPMENT CORPORATION

PULOT NICKEL MINING PROJECT
Sofronio Española, Palawan 5324

MINING FOREST PROGRAM

Block C3 rehabilitation area

- Joint tree planting activity in block C3 rehabilitation area together with the Bureau of Fire Protection last August 23, 2022. With 4,500 of putian, batino and mansalagon seedlings were planted in the said area.





Citinickel Mines AND DEVELOPMENT CORPORATION

PULOT NICKEL MINING PROJECT
Sofronio Española, Palawan 5324

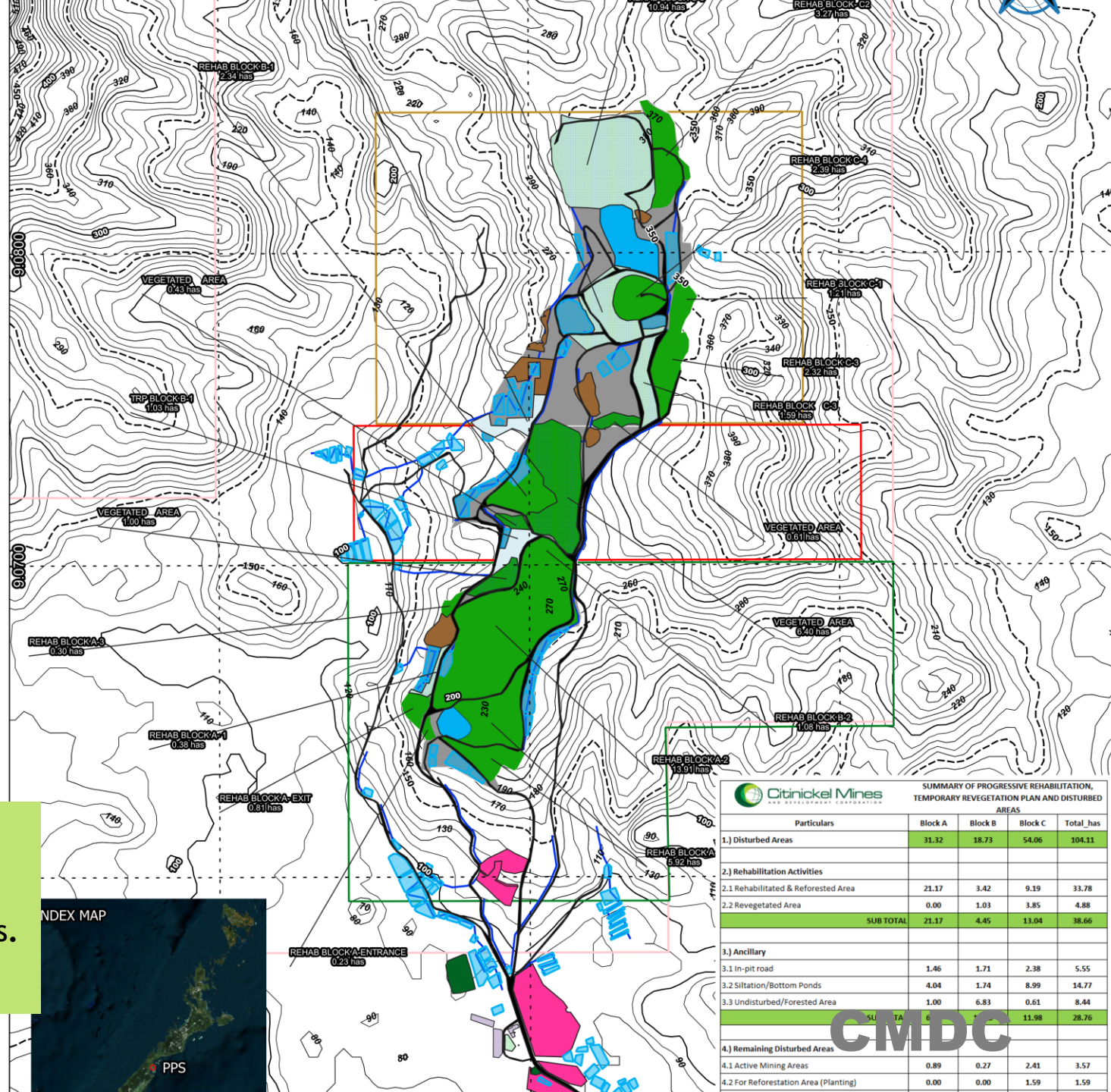
REHABILITATED SITES

Block C1 Block C3
Block C2 Block C4

Block B1

Block A1 Block A
Block A2 ENTRANCE
Block AA Block A
 EXIT

Total area planted for 3rd Q of 2022: 0.81 has
Total area planted from 2013 to 2022: 33.78 has
Total no. of trees planted: 120,338 seedlings.
Total No. Of Enrichment Planted: 13,418 seedlings



SUMMARY OF PROGRESSIVE REHABILITATION, TEMPORARY REVEGETATION PLAN AND DISTURBED AREAS

Particulars	Block A	Block B	Block C	Total_has
1.) Disturbed Areas	31.32	18.73	54.06	104.11
2.) Rehabilitation Activities				
2.1 Rehabilitated & Reforested Area	21.17	3.42	9.19	33.78
2.2 Revegetated Area	0.00	1.03	3.85	4.88
SUB TOTAL	21.17	4.45	13.04	38.66
3.) Ancillary				
3.1 In-pit road	1.46	1.71	2.38	5.55
3.2 Siltation/Bottom Ponds	4.04	1.74	8.99	14.77
3.3 Undisturbed/Forested Area	1.00	6.83	0.61	8.44
SUB TOTAL	6.50	8.58	11.98	26.76
4.) Remaining Disturbed Areas				
4.1 Active Mining Areas	0.89	0.27	2.41	3.57
4.2 For Reforestation Area (Planting)	0.00	0.00	1.59	1.59



Citinickel Mines
AND DEVELOPMENT CORPORATION

PULOT NICKEL MINING PROJECT
Sofronio Española, Palawan 5324

Temporary Revegetation Program

3rd Quarter 2022 Status

July to September 2022

CMDC



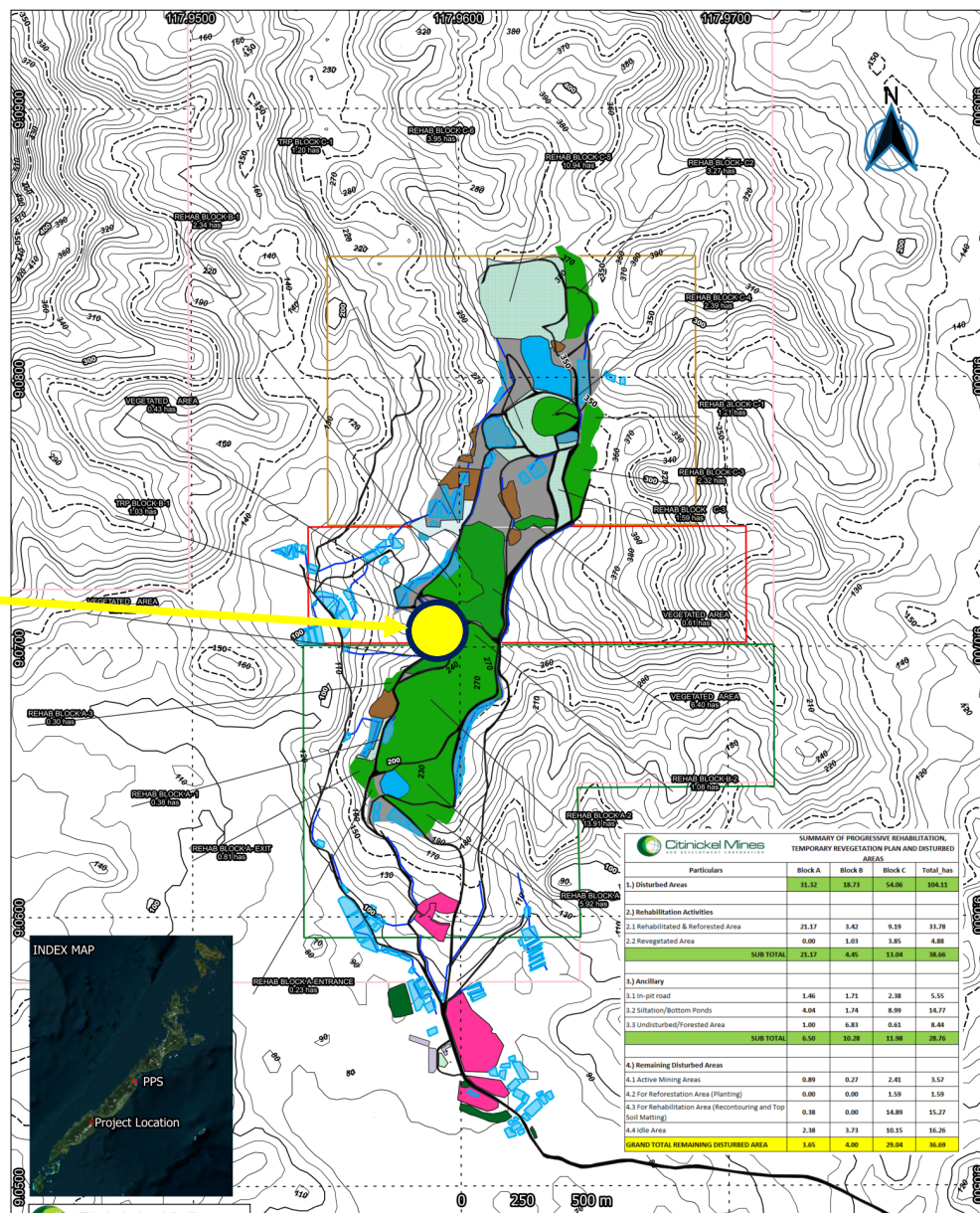
Citinickel Mines
AND DEVELOPMENT CORPORATION

PULOT NICKEL MINING PROJECT
Sofronio Española, Palawan 5324

TEMPORARY REVEGETATION PROGRAM



TRP Block B-1





Citinickel Mines
AND DEVELOPMENT CORPORATION

PULOT NICKEL MINING PROJECT
Sofronio Española, Palawan 5324

Temporary Revegetation Program

Location: TRP Block B1

Date planted: March 31, 2021

Area planted: 1.03 has

No. of grasses planted: 2,800
counts

Grass specie planted: Buntot pusa,
Talahib, Tikog, Carabao grass



TRP Block B1

CMDRC



Citinickel Mines
AND DEVELOPMENT CORPORATION

PULOT NICKEL MINING PROJECT
Sofronio Española, Palawan 5324

Bamboo Plantation

3rd Quarter 2022 Status

July to September 2022

CMDC



Citinickel Mines
AND DEVELOPMENT CORPORATION

PULOT NICKEL MINING PROJECT
Sofronio Española, Palawan 5324

Bamboo Plantation

Location: Block AA rehabilitation

Date planted: September 2021

Area Planted: 0.7 has.

No. of seedlings Planted: 120 culms

Specie Planted: Bamboo



Block AA rehabilitation sloping area

CMDC



Citinickel Mines
AND DEVELOPMENT CORPORATION

PULOT NICKEL MINING PROJECT
Sofronio Española, Palawan 5324

Bamboo Plantation

Location: Block A-2 rehabilitation

Date planted: September 2018

Area Planted: 3 has.

No. of Trees Planted: 800 culms

Trees Planted: Bamboo



Block A-2 rehabilitation area

CMDC



Citinickel Mines
AND DEVELOPMENT CORPORATION

PULOT NICKEL MINING PROJECT
Sofronio Española, Palawan 5324

Bamboo Plantation

Location: Block B-1 rehabilitation

Date planted: March 2021

Area Planted: 2.34 has

No. of seedlings Planted: 600 culms

Specie Planted: Bamboo



Block B-1 rehabilitation area

CMDC



Citinickel Mines
AND DEVELOPMENT CORPORATION

PULOT NICKEL MINING PROJECT
Sofronio Española, Palawan 5324

Bamboo Plantation

Location: Block C-3 rehabilitation

Date planted: November 2021 March 2022

Area Planted: 0.5 has

No. of seedlings Planted: 350 culms

Specie Planted: Bamboo



Block C-3 rehabilitation area

CMDC



Citinickel Mines
AND DEVELOPMENT CORPORATION

PULOT NICKEL MINING PROJECT
Sofronio Española, Palawan 5324

Bamboo Plantation

Location: Block C-4 rehabilitation

Date planted: April 26, 2021

Area Planted: 2.39 has

No. of seedlings Planted: 400 culms

Specie Planted: Bamboo



Block C-4 rehabilitation area

CMDC



Citinickel Mines
AND DEVELOPMENT CORPORATION

PULOT NICKEL MINING PROJECT
Sofronio Española, Palawan 5324

Bamboo Plantation

Location: Pier site Stockyard Bund wall

Date planted: September 2017

Area Planted: 1 has

No. of seedlings Planted: 325 culms

Specie Planted: Bamboo



Pier site stockyard bun wall



Citinickel Mines
AND DEVELOPMENT CORPORATION

PULOT NICKEL MINING PROJECT
Sofronio Española, Palawan 5324

Bamboo Plantation

Location: Admin pathway

Date planted: February 2021

Area Planted: 0.2 has

No. of seedlings Planted: 25 culms

Specie Planted: Japanese Bamboo



Admin Pathway



Citinickel Mines
AND DEVELOPMENT CORPORATION

PULOT NICKEL MINING PROJECT
Sofronio Española, Palawan 5324

SPECIAL TREE CUTTING and EARTH- BALLING PERMIT (STCEP)

STATUS UPDATE

3rd Quarter 2022 Accomplishments

July to September 2022

CMDC

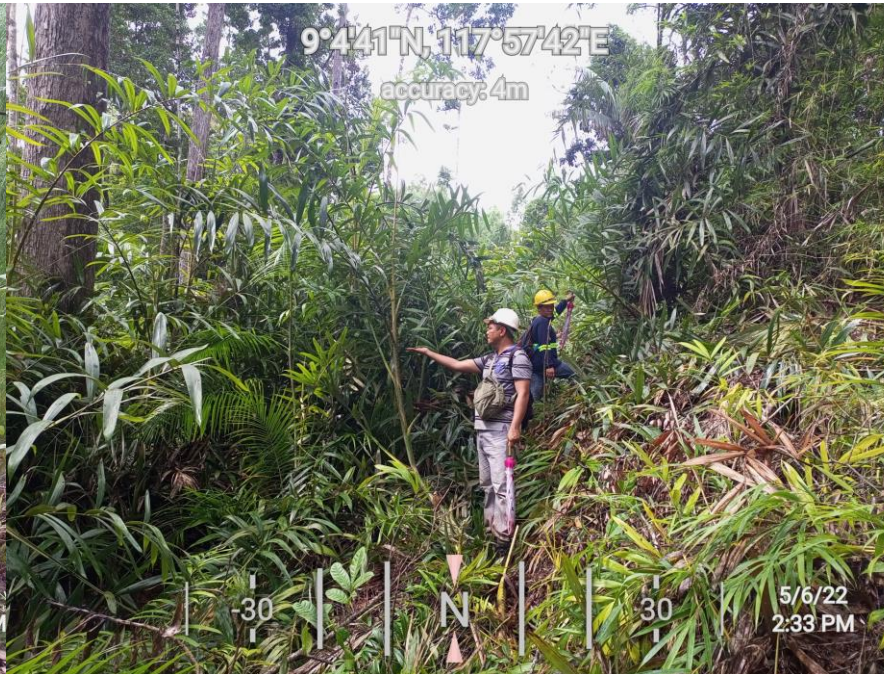
Environmental Department Assisted to the following activities:

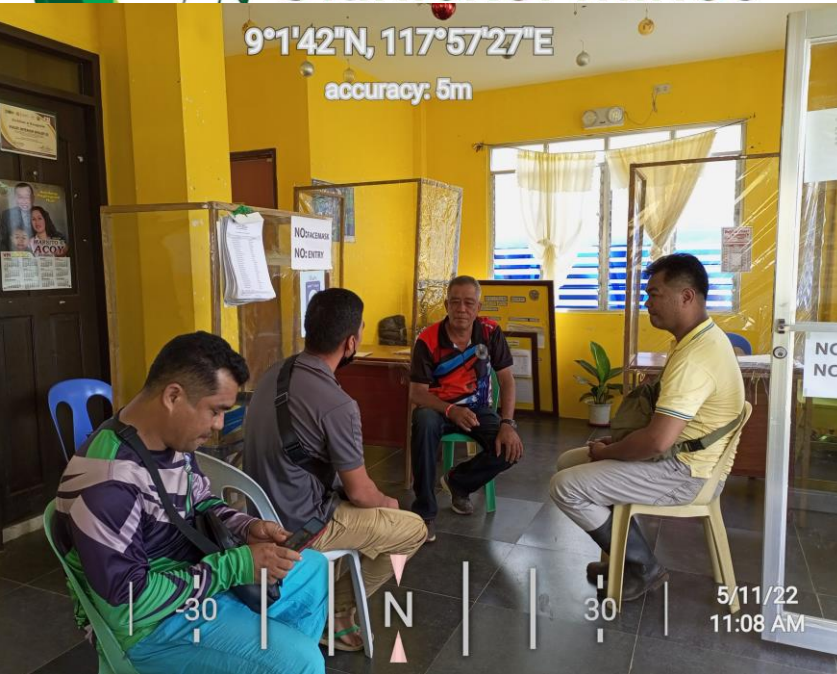
- ❖ Conduct biodiversity Assessment within MPSA no. 229-2007-IV-B located in Brgy Punang, Sofronio Española, Palawan
- ❖ Relocation of Naturally Growing Trees (STCEP) No. DENR MIMAROPA REGION -2022-027
- ❖ Assisted DENR monitoring Team for demarcation within MPSA area
- ❖ Assisted DENR monitoring team for demarcation of Cutting trees in Log-deck for Inventory.











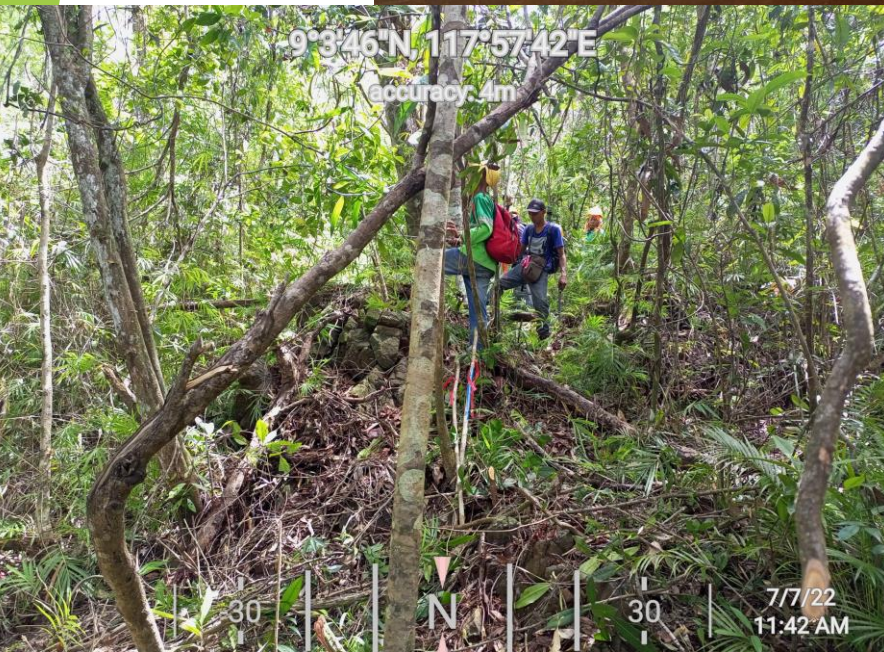


Citinickel Mines

AND DE

PULO
Sof

Demarcation of boundaries within
MPSA









Citinickel Mines

AND DEVELOPMENT CORPORATION

Monitoring of Earth-balling Activities

PUL





Citinickel Mines
AND DEVELOPMENT CORPORATION

PULOT NICKEL MINING PROJECT
Sofronio Española, Palawan 5324

Monitoring of Earth-balling Activities



Block 3

CMDC



Citinickel Mines AND DEVELOPMENT CORPORATION

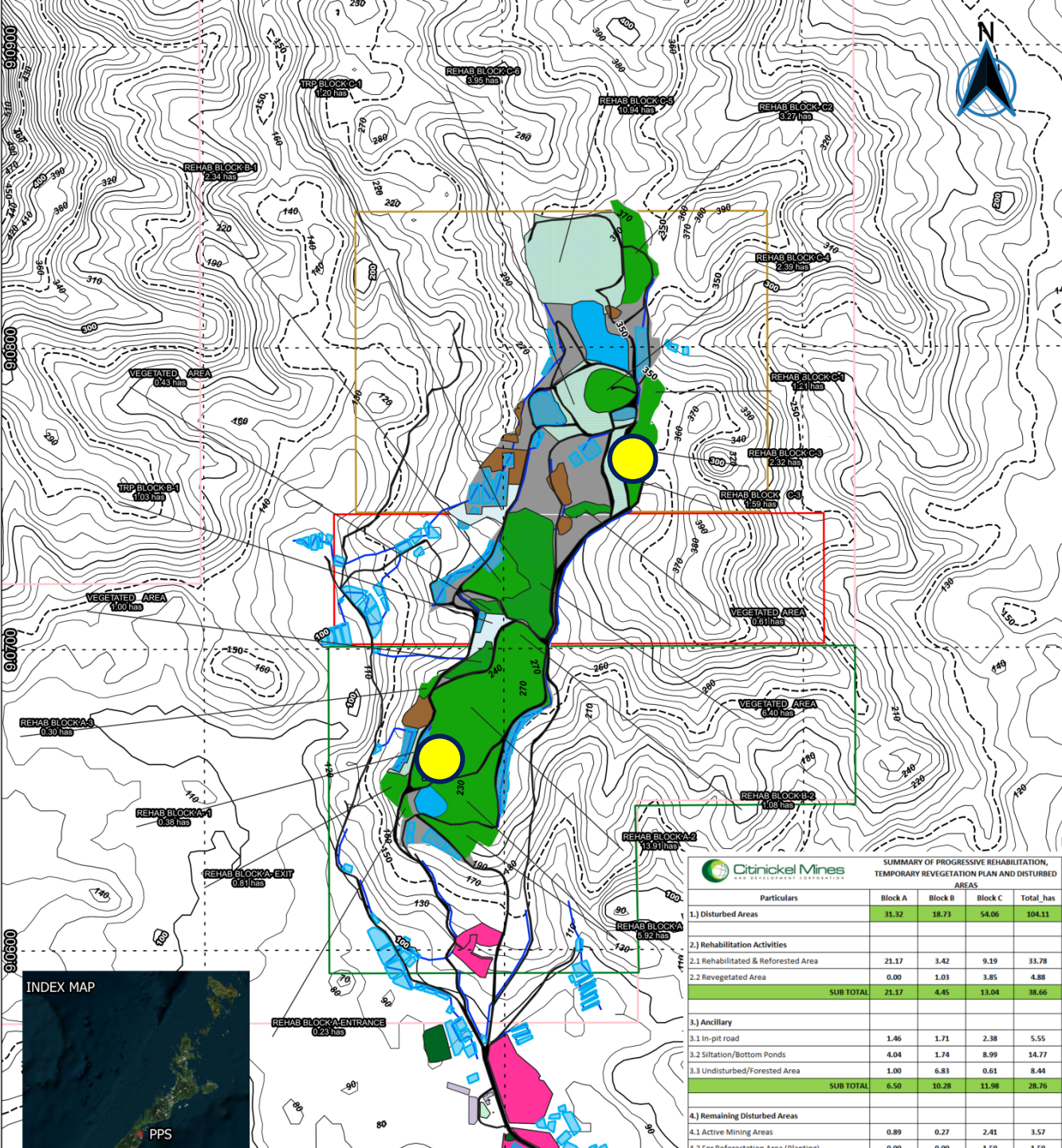
PULOT NICKEL MINING PROJECT
Sofronio Española, Palawan 5324

STCEP EARTH-BALLED SITE

Block A2

Block C3

Total area planted in 2022:
Total no. of Species planted: 5,500 seedlings less than 5 cm.
Total no. of Species planted: 500 seedlings more than 5 cm.
Species planted: Batino, Agoho, Maladuhat & Putian



SUMMARY OF PROGRESSIVE REHABILITATION, TEMPORARY REVEGETATION PLAN AND DISTURBED AREAS				
Particulars	Block A	Block B	Block C	Total has
1.) Disturbed Areas	31.32	38.73	54.06	104.11
2.) Rehabilitation Activities				
2.1 Rehabilitated & Reforested Area	21.17	3.42	9.19	33.78
2.2 Revegetated Area	0.00	1.03	3.85	4.88
SUB TOTAL	21.17	4.45	13.04	38.66
3.) Ancillary				
3.1 In-pit road	1.46	1.71	2.38	5.55
3.2 Siltation/Bottom Ponds	4.04	1.74	8.99	14.77
3.3 Undisturbed/Forested Area	1.00	6.83	0.61	8.44
SUB TOTAL	6.50	10.28	11.98	28.76
4.) Remaining Disturbed Areas				
4.1 Active Mining Areas	0.89	0.27	2.41	3.57
4.2 For Re-vegetation Area (Disturbed)	0.00	0.00	1.50	1.50



Citinickel Mines
AND DEVELOPMENT CORPORATION

PULOT NICKEL MINING PROJECT
Sofronio Española, Palawan 5324

END OF PRESENTATION

Thank you..



CMDC