

**SAMPLING STATIONS AND RESULTS OF ANALYSIS – NAUJAN, ORIENTAL MINDORO (MARCH 1 – 10, 2023)**

Source	Station No.	Station Identification	Classification	Current Beneficial Usage	WQG	Date of Sampling									
						March 1, 2023	March 2, 2023	March 3, 2023	March 4, 2023	March 5, 2023	March 6, 2023	March 7, 2023	March 8, 2023	March 9, 2023	March 10, 2023
Naujan Municipal Waters	1	Estrella	Class SB	Swimming, fishing, tourist area, docking of boat, residential area (20-30 meters away from the beach)	2 mg/L	2 mg/L	5 mg/L	3 mg/L	8 mg/L	3 mg/L	<1 mg/L	16 mg/L	2 mg/L	1 mg/L	2 mg/L
	2	Sta. Cruz	Class SC	Fishing, docking of boat, swimming	3 mg/L	13 mg/L	5 mg/L	3 mg/L	13 mg/L	<1 mg/L	3 mg/L	9 mg/L	2 mg/L	<1 mg/L	3 mg/L
	3	San Jose (Sitio Pitogo)	Class SB	Swimming, presence of beach resort, tourist area	2 mg/L	<1 mg/L	4 mg/L	49 mg/L	9 mg/L	16 mg/L	1 mg/L	30 mg/L	4 mg/L	7 mg/L	3 mg/L



  
**JOE AMIL M. SALINO**  
Regional Director  
EMB – MIMAROPA Region

	4	San Jose (Sitio 1)	Class SC	Docking, fishing, swimming with residential area	3 mg/L	11 mg/L	5 mg/L	8 mg/L	12 mg/L	10 mg/L	3 mg/L	31 mg/L	15 mg/L	11 mg/L	34 mg/L
	5	Antipolo/San Jose Proper	Class SC	Swimming, docking of boat, fishing, residential area	3 mg/L	21 mg/L	NO SAMPLING WAS CONDUCTED PER ADVICE OF MDRRMO/PCG/BANTAY DAGAT AND FISHERY MANAGEMENT UNIT DUE TO BAD WEATHER								-
	6	Brgy. Melgar A/ Pitogo Beach	Class SB	Swimming with residential area	2 mg/L	7 mg/L	8 mg/L	3 mg/L	15 mg/L	2 mg/L	5 mg/L	8 mg/L	19 mg/L	10 mg/L	32 mg/L
	7	Melgar B/ Papangkil Beach	Class SC	Swimming, fishing area, with residential area	3 mg/L	9 mg/L	5 mg/L	6 mg/L	11mg/L	<1 mg/L	9 mg/L	11 mg/L	22 mg/L	3 mg/L	9 mg/L



**JOE AMIL M. SALINO**  
Regional Director  
EMB – MIMAROPA Region

	8	Buloc-Buloc Fish Sanctuary	Class SA	Tourist area, fish sanctuary	1 mg/L	<1 mg/L	NO SAMPLING WAS CONDUCTED PER ADVICE OF MDRRMO/PCG/BANTAY DAGAT AND FISHERY MANAGEMENT UNIT DUE TO BAD WEATHER	9 mg/L	NO SAMPLING WAS CONDUCTED PER ADVICE OF MDRRMO/PCG/BANTAY DAGAT AND FISHERY MANAGEMENT UNIT DUE TO BAD WEATHER	-
	9	Montemayor Proper	Class SA	Swimming, fishing	1 mg/L	2 mg/L		5 mg/L		-
	10	Masaguing	Class SA	Swimming, fishing	1 mg/L	<1 mg/L		12 mg/L		-
	11	Tujod Fish Sanctuary	Class SA	Fish sanctuary	1 mg/L	15 mg/L		8 mg/L		-

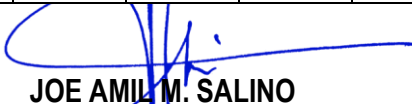


  
**JOE AMIL M. SALINO**  
Regional Director  
EMB – MIMAROPA Region

**SAMPLING STATIONS AND RESULTS OF ANALYSIS – NAUJAN, ORIENTAL MINDORO (MARCH 11 TO 20, 2023)**

Source	Station No.	Station Identification	Classification	Current Beneficial Usage	WQG	Date of Sampling									
						March 11, 2023	March 12, 2023	March 13, 2023	March 14, 2023	March 15, 2023	March 16, 2023	March 17, 2023	March 18, 2023	March 19, 2023	March 20, 2023
Naujan Municipal Waters	1	Estrella	Class SB	Swimming, fishing, tourist area, docking of boat, residential area (20-30 meters away from the beach)	2 mg/L	30 mg/L									
	2	Sta. Cruz	Class SC	Fishing, docking of boat, swimming	3 mg/L	1 mg/L									
	3	San Jose (Sitio Pitogo)	Class SB	Swimming, presence of beach resort,	2 mg/L	19 mg/L									



  
**JOE AMIL M. SALINO**  
Regional Director  
EMB – MIMAROPA Region

				tourist area											
	4	San Jose (Sitio 1)	Class SC	Docking, fishing, swimming with residential area	3 mg/L	6 mg/L									
	5	Antipolo/San Jose Proper	Class SC	Swimming, docking of boat, fishing, residential area	3 mg/L	NO SAMPLING WAS CONDUCTED PER ADVICE OF MDRRMO/PCG/BANTAY DAGAT AND FISHERY MANAGEMENT UNIT DUE TO BAD WEATHER									



  
**JOE AMIL M. SALINO**  
Regional Director  
EMB – MIMAROPA Region

	6	Brgy. Melgar A/ Pitogo Beach	Class SB	Swimming with residential area	2 mg/L	<1 mg/L									
	7	Melgar B/ Papangkil Beach	Class SC	Swimming, fishing area, with residential area	3 mg/L	<1 mg/L									
	8	Buloc-Buloc Fish Sanctuary	Class SA	Tourist area, fish sanctuary	1 mg/L	-									
	9	Montemayor Proper	Class SA	Swimming, fishing	1 mg/L	-									
	10	Masaguig	Class SA	Swimming, fishing	1 mg/L	-									
	11	Tujod Fish Sanctuary	Class SA	Fish sanctuary	1 mg/L	-									



  
**JOE AMIL M. SALINO**  
Regional Director  
EMB – MIMAROPA Region

SAMPLING STATIONS AND RESULTS OF ANALYSIS - PINAMALAYAN, ORIENTAL MINDORO

Source	Station No.	Station Identification	Current Beneficial Use	Date of Sampling					Classification	WQG
				March 2	March 7	March 8	March 9	March 10		
Pinamalayan Bay (Coastal), Oriental Mindoro	1	Brgy. Lumang Bayan	Swimming, docking of boat	<1 mg/L	12 mg/L	2 mg/L	<1 mg/L	27 mg/L	Class SC	3 mg/L

\*NO SAMPLING WAS CONDUCTED AT LUMANGBAYAN FROM MARCH 3 TO MARCH 6, 2023 PER ADVICE OF MDRRMO/PCG/BANTAY DAGAT AND FISHERY MANAGEMENT UNIT DUE TO BAD WEATHER

SAMPLING STATIONS AND RESULTS OF ANALYSIS – PINAMALAYAN BAY (MPA) , ORIENTAL MINDORO (MARCH 1 TO 10, 2023)

Source	Station No.	Station Identification	Current Beneficial Use	Classification	WQG	Date of Sampling									
						March 1, 2023	March 2, 2023	March 3, 2023	March 4, 2023	March 5, 2023	March 6, 2023	March 7, 2023	March 8, 2023	March 9, 2023	March 10, 2023
Pinamalayan Bay (MPA), Oriental Mindoro	1	Simborio Fish Sanctuary	Fishing	Class SA	1 mg/L	-	9 mg/L	4 mg/L	9 mg/L	3 mg/L	2 mg/L	35 mg/L	5 mg/L	2 mg/L	12 mg/L
	2	Ginapangan Fish Sanctuary	Fish sanctuary	Class SA	1 mg/L	-	47 mg/L	6 mg/L	17 mg/L	3 mg/L	1 mg/L	17 mg/L	3 mg/L	<1 mg/L	5 mg/L
	3	Pili Fish Sanctuary	Swimming, fishing, fish sanctuary	Class SA	1 mg/L	-	4 mg/L	4 mg/L	6 mg/L	5 mg/L	1 mg/L	21 mg/L	4 mg/L	2 mg/L	6 mg/L



  
JOE AMIL M. SALINO  
Regional Director  
EMB – MIMAROPA Region

	4	Ranzo Fish Sanctuary	Swimming, fishing	Class SA	1 mg/L	-	3 mg/L	6 mg/L	2 mg/L	3 mg/L	16 mg/L	7 mg/L	1 mg/L	4 mg/L	5 mg/L
		MAR Francisco	(NEW STATION)			-	-	-	-	-	-	10 mg/L	3 mg/L	5 mg/L	4 mg/L

**SAMPLING STATIONS AND RESULTS OF ANALYSIS – PINAMALAYAN BAY (MPA) , ORIENTAL MINDORO (MARCH 11 TO 20, 2023)**

Source	Station No.	Station Identification	Current Beneficial Use	Classification	WQG	Date of Sampling									
						March 11, 2023	March 12, 2023	March 13, 2023	March 14, 2023	March 15, 2023	March 16, 2023	March 17, 2023	March 18, 2023	March 19, 2023	March 20, 2023
Pinamalayan Bay (MPA), Oriental Mindoro	1	Simborio Fish Sanctuary	Fishing	Class SA	1 mg/L	-									
	2	Ginapangan Fish Sanctuary	Fish sanctuary	Class SA	1 mg/L	-									
	3	Pili Fish Sanctuary	Swimming, fishing, fish sanctuary	Class SA	1 mg/L	-									
	4	Ranzo Fish Sanctuary	Swimming, fishing	Class SA	1 mg/L	-									
		MAR Francisco	(NEW STATION)			-									





**JOE AMIL M. SALINO**  
Regional Director  
EMB – MIMAROPA Region



**SAMPLING STATIONS AND RESULTS OF ANALYSIS - POLA, ORIENTAL MINDORO**  
**(MARCH 1 TO 10, 2023)**

Source	Station No.	Station Identification	Classification	Current Beneficial Use	WQG	Date of Sampling									
						March 1, 2023	March 2, 2023	March 3, 2023	March 4, 2023	March 5, 2023	March 6, 2023	March 7, 2023	March 8, 2023	March 9, 2023	March 10, 2023
Pola Shoreline	1	Misong MPA	Class SA	Tourist area, fishing, fish sanctuary	1 mg/L	-	20 mg/L	5 mg/L	3 mg/L	-	4 mg/L	9 mg/L	12 mg/L	3 mg/L	2 mg/L
	2	Central Tagumpay MPA	Class SA	Tourist area	1 mg/L	-	10 mg/L	7 mg/L	15 mg/L	-	7 mg/L	6 mg/L	17 mg/L	4 mg/L	2 mg/L
	3	Tuguihan MPA	Class SC	Port of Pola, Docking of boat, fishing sanctuary	3 mg/L	-	-	6 mg/L	25 mg/L	-	5 mg/L	5 mg/L	12 mg/L	34 mg/L	<1 mg/L
	4	Casiligan River Estuary	Class SA	Casiligan drainage area	1 mg/L	-	-	4 mg/L	4 mg/L	-	4 mg/L	6 mg/L	5 mg/L	3 mg/L	11 mg/L
	5	Calima MPA	Class SA	Fishing sanctuary, fishing	1 mg/L	-	3 mg/L	8 mg/L	5 mg/L	NO SAMPLING WAS CONDUCTED PER ADVICE OF MDRRMO/PCG/BANTAY			1 mg/L	3 mg/L	14 mg/L



  
**JOE AMIL M. SALINO**  
 Regional Director  
 EMB – MIMAROPA Region

	6	Polacay Beach	Class SC	Tourist area, presence of resort	3 mg/L	-	1 mg/L	4 mg/L	5 mg/L	DAGAT AND FISHERY MANAGEMENT UNIT DUE TO BAD WEATHER	3 mg/L	<1 mg/L	18 mg/L
	7	Casiligan River Mangrove	Class SB	Within mangrove area, near boat docking area	2 mg/L	-	-	-	14 mg/L		2 mg/L	2 mg/L	<1 mg/L
		Kwebang Tagumpay	Class SC	Within private resort, fishing, swimming	3 mg/L	-	-	10 mg/L	-		8 mg/L	1 mg/L	<1 mg/L



  
**JOE AMIL M. SALINO**  
Regional Director  
EMB – MIMAROPA Region

**SAMPLING STATIONS AND RESULTS OF ANALYSIS - POLA, ORIENTAL MINDORO**  
**(MARCH 11 TO 20, 2023)**

Source	Station No.	Station Identification	Classification	Current Beneficial Use	WQG	Date of Sampling									
						March 11, 2023	March 12, 2023	March 13, 2023	March 14, 2023	March 15, 2023	March 16, 2023	March 17, 2023	March 18, 2023	March 19, 2023	March 20, 2023
Pola Shoreline	1	Misong MPA	Class SA	Tourist area, fishing, fish sanctuary	1 mg/L	3 mg/L									
	2	Central Tagumpay MPA	Class SA	Tourist area	1 mg/L	1 mg/L									
	3	Tuguihan MPA	Class SC	Port of Pola, Docking of boat, fishing sanctuary	3 mg/L	15 mg/L									
	4	Casiligan River Estuary	Class SA	Casiligan drainage area	1 mg/L	12 mg/L									



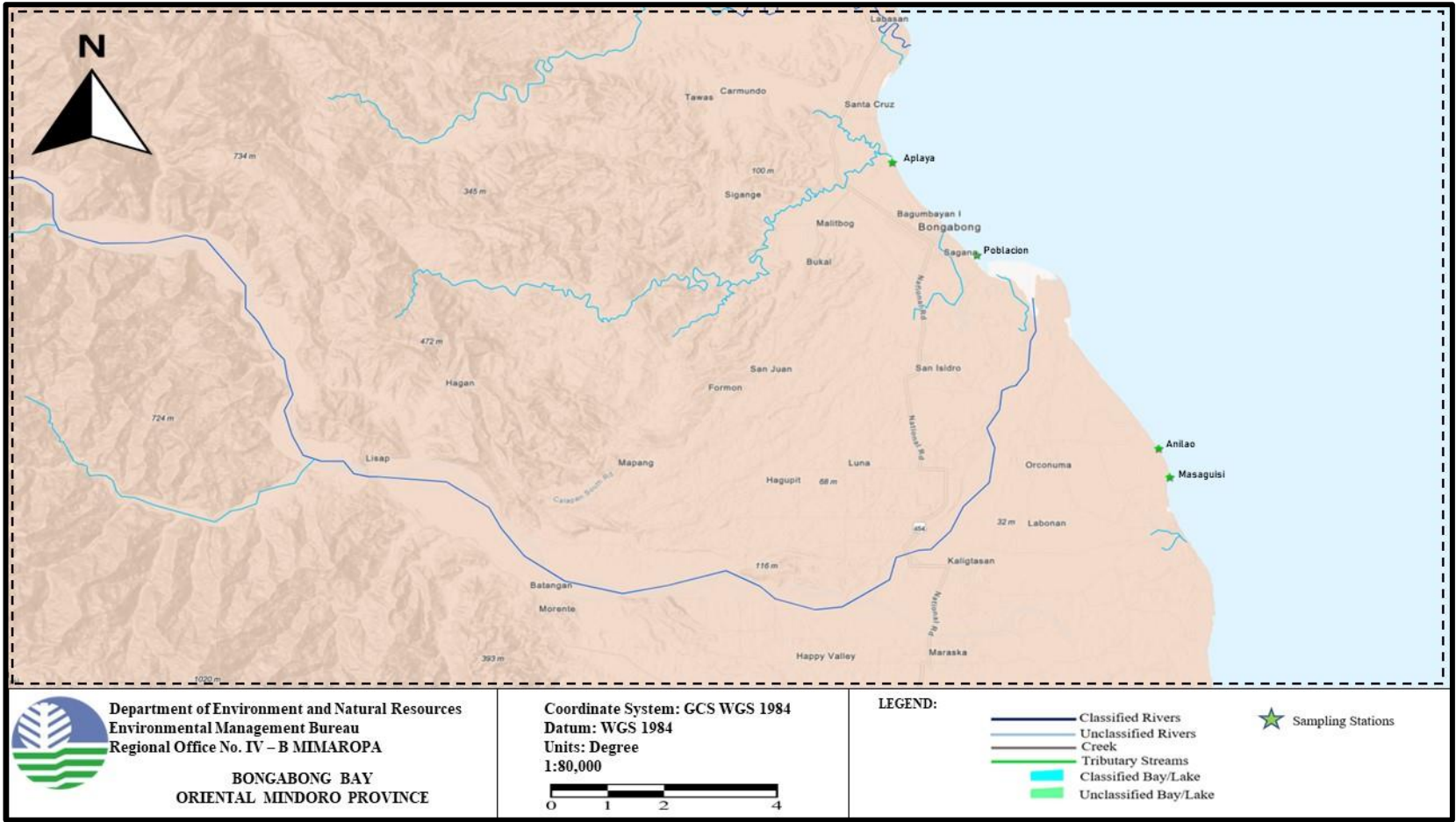
  
**JOE AMIL M. SALINO**  
 Regional Director  
 EMB – MIMAROPA Region

	5	Calima MPA	Class SA	Fishing sanctuary, fishing	1 mg/L	3 mg/L									
	6	Polacay Beach	Class SC	Tourist area, presence of resort	3 mg/L	18 mg/L									
	7	Casiligan River Mangrove	Class SB	Within mangrove area, near boat docking area	2 mg/L	<1 mg/L									
		Kwebang Tagumpay	Class SC	Within private resort, fishing, swimming	3 mg/L	3 mg/L									



**JOE AMIL M. SALINO**  
Regional Director  
EMB – MIMAROPA Region

SAMPLING STATIONS AND RESULTS OF ANALYSIS - BONGABONG, ORIENTAL MINDORO



  
**JOE AMIL M. SALINO**  
Regional Director  
EMB – MIMAROPA Region

**SAMPLING STATIONS AND RESULTS OF ANALYSIS – BONGABONG, ORIENTAL MINDORO  
(MARCH 1 TO 10, 2023)**

Source	Station No.	Station Identification	Classification	Current Beneficial Use	WQG	Date of Sampling									
						March 1, 2023	March 2, 2023	March 3, 2023	March 4, 2023	March 5, 2023	March 6, 2023	March 7, 2023	March 8, 2023	March 9, 2023	March 10, 2023
Bongabong Bay, Bongabong, Oriental Mindoro	1	Aplaya	Class SB	Swimming, fishing area, docking of boat	2 mg/L	-	-	5 mg/L	10 mg/L	3 mg/L	3 mg/L	6 mg/L	1 mg/L	12 mg/L	12 mg/L
	2	Poblacion	Class SA	Swimming, fishing area	1 mg/L	-	-	4 mg/L	6 mg/L	2 mg/L	3 mg/L	9 mg/L	2 mg/L	7 mg/L	<1 mg/L
	3	Anilao	Class SA	Swimming, marine protected area	1 mg/L	-	-	6 mg/L	11 mg/L	<1 mg/L	19 mg/L	12 mg/L	5 mg/L	3 mg/L	2 mg/L
	4	Masaguisi	Class SB	Marine, protected area, swimming	2 mg/L	-	-	3 mg/L	6 mg/L	13 mg/L	4 mg/L	7 mg/L	9 mg/L	12 mg/L	14 mg/L





**JOE AMIL M. SALINO**  
Regional Director  
EMB – MIMAROPA Region

**SAMPLING STATIONS AND RESULTS OF ANALYSIS – BONGABONG, ORIENTAL MINDORO  
(MARCH 11 TO 20, 2023)**

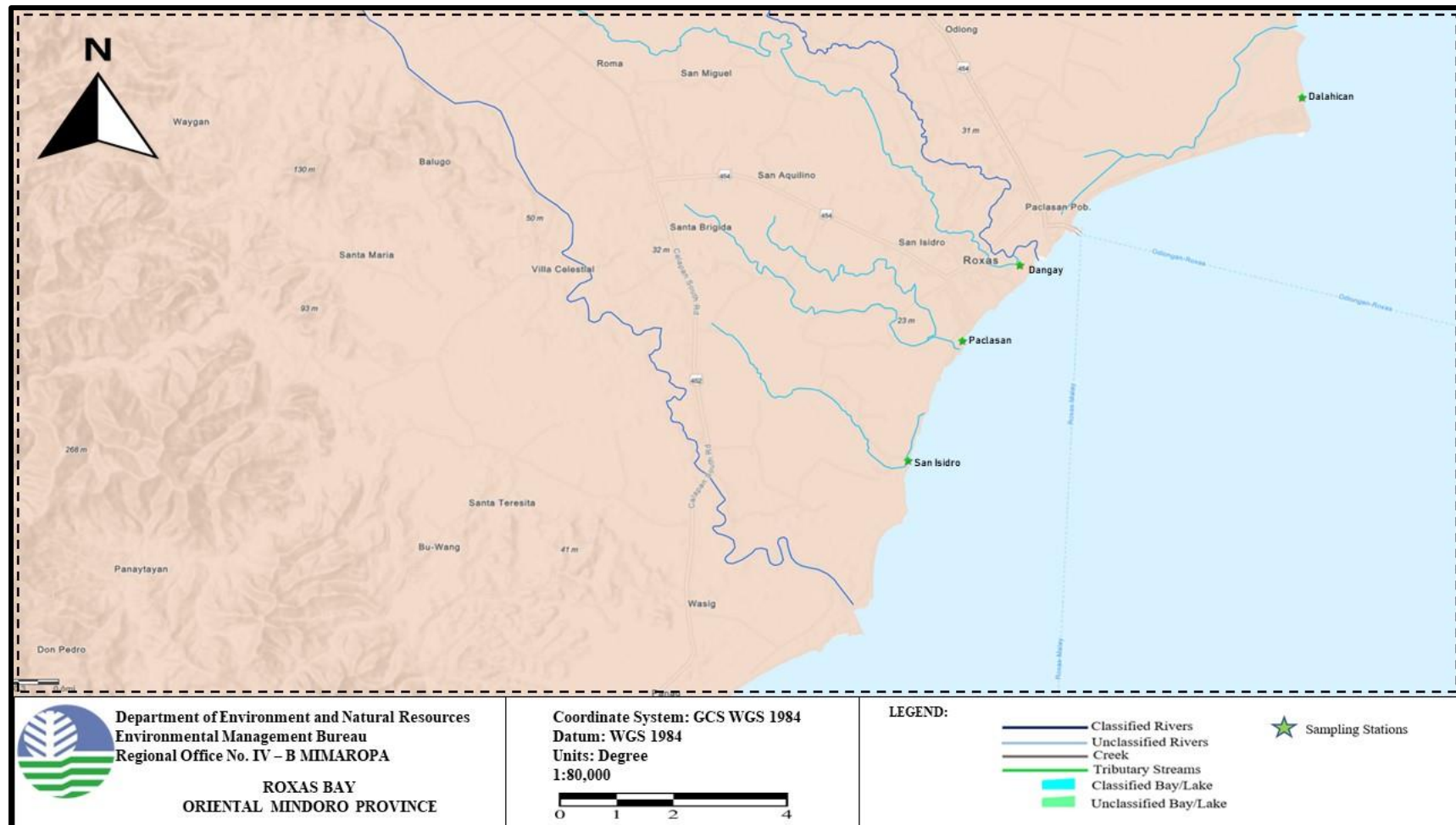
Source	Station No.	Station Identification	Classification	Current Beneficial Use	WQG	Date of Sampling									
						March 11, 2023	March 12, 2023	March 13, 2023	March 14, 2023	March 15, 2023	March 16, 2023	March 17, 2023	March 18, 2023	March 19, 2023	March 20, 2023
Bongabong Bay, Bongabong, Oriental Mindoro	1	Aplaya	Class SB	Swimming, fishing area, docking of boat	2 mg/L	<1 mg/L									
	2	Poblacion	Class SA	Swimming, fishing area	1 mg/L	3 mg/L									
	3	Anilao	Class SA	Swimming, marine protected area	1 mg/L	9 mg/L									
	4	Masaguisi	Class SB	Marine, protected area, swimming	2 mg/L	5 mg/L									





**JOE AMIL M. SALINO**  
Regional Director  
EMB – MIMAROPA Region

## SAMPLING STATIONS AND RESULTS OF ANALYSIS - ROXAS, ORIENTAL MINDORO





**SAMPLING STATIONS AND RESULTS OF ANALYSIS – ROXAS, ORIENTAL MINDORO  
(MARCH 1 TO 10, 2023)**

Source	Station No.	Station Identification	Classification	Current Beneficial Usage	WQG	Date of Sampling									
						March 1, 2023	March 2, 2023	March 3, 2023	March 4, 2023	March 5, 2023	March 6, 2023	March 7, 2023	March 8, 2023	March 9, 2023	March 10, 2023
Roxas Bay, Roxas, Oriental Mindoro	1	Dalahican	Class SB	Swimming, fishing, with household near the beach front	2 mg/L	-	-	4 mg/L	6 mg/L	14 mg/L	4 mg/L	8 mg/L	1 mg/L	34 mg/L	4 mg/L
	2	Dangay	Class SB	Swimming, fishing, household area	2 mg/L	-	-	4 mg/L	5 mg/L	3 mg/L	4 mg/L	5 mg/L	2 mg/L	22 mg/L	5 mg/L
	3	Paclasan	Class SB	Swimming, fishing, household area	2 mg/L	-	-	4 mg/L	4 mg/L	2 mg/L	4 mg/L	4 mg/L	2 mg/L	4 mg/L	3 mg/L
	4	San Isidro	Class SA	Swimming, fishing, household area	1 mg/L	-	-	3 mg/L	15 mg/L	<1 mg/L	3 mg/L	<1 mg/L	<1 mg/L	11 mg/L	3 mg/L



**SAMPLING STATIONS AND RESULTS OF ANALYSIS – ROXAS, ORIENTAL MINDORO  
(MARCH 11 TO 20, 2023)**

Source	Station No.	Station Identification	Classification	Current Beneficial Usage	WQG	Date of Sampling									
						March 11, 2023	March 12, 2023	March 13, 2023	March 14, 2023	March 15, 2023	March 16, 2023	March 17, 2023	March 18, 2023	March 19, 2023	March 20, 2023
Roxas Bay, Roxas, Oriental Mindoro	1	Dalahican	Class SB	Swimming, fishing, with household near the beach front	2 mg/L	2 mg/L									
	2	Dangay	Class SB	Swimming, fishing, household area	2 mg/L	1 mg/L									
	3	Paclasan	Class SB	Swimming, fishing, household area	2 mg/L	3 mg/L									
	4	San Isidro	Class SA	Swimming, fishing, household area	1 mg/L	6 mg/L									





**JOE AMIL M. SALINO**  
Regional Director  
EMB – MIMAROPA Region

**SAMPLING STATIONS AND RESULTS OF ANALYSIS - GLORIA, ORIENTAL MINDORO  
(MARCH 7 TO 11,2023)**

Source	Station No.	Station Identification	Classification	Current Beneficial Usage	WQG	Date of Sampling				
						March 7, 2023	March 8, 2023	March 9, 2023	March 10, 2023	March 11, 2023
Gloria (Coastal Waters), Oriental Mindoro	1	Aglasin (MPA)	Class SB	Marine protected area, swimming	2 mg/L	<1 mg/L	2 mg/L	2 mg/L	19 mg/L	-
	2	Maragooc	Class SB	Swimming, fishing	2 mg/L	5 mg/L	2 mg/L	3 mg/L	44 mg/L	-
	3	Guimbohan	Class SA	Swimming, fishing	1 mg/L	<1 mg/L	1 mg/L	2 mg/L	12 mg/L	-
	4	Sta. Theresa (MPA)	Class SA	Marine protected area, swimming, fishing	1 mg/L	15 mg/L	1 mg/L	6 mg/L	45 mg/L	-
	5	Balete	Class SB	With mangrove area, swimming, fishing	2 mg/L	10 mg/L	4 mg/L	1 mg/L	5 mg/L	-
	6	San Antonio	Class SB	Swimming, fishing	2 mg/L	12 mg/L	10 mg/L	2 mg/L	3 mg/L	-
	7	Kawit	Class SB	Swimming, fishing	2 mg/L	13 mg/L	6 mg/L	<1 mg/L	8 mg/L	-
	8	Tambong	Class SB	Marine protected area, swimming, fishing	2 mg/L	13 mg/L	3 mg/L	2 mg/L	2 mg/L	-





**JOE AMIL M. SALINO**  
Regional Director  
EMB – MIMAROPA Region