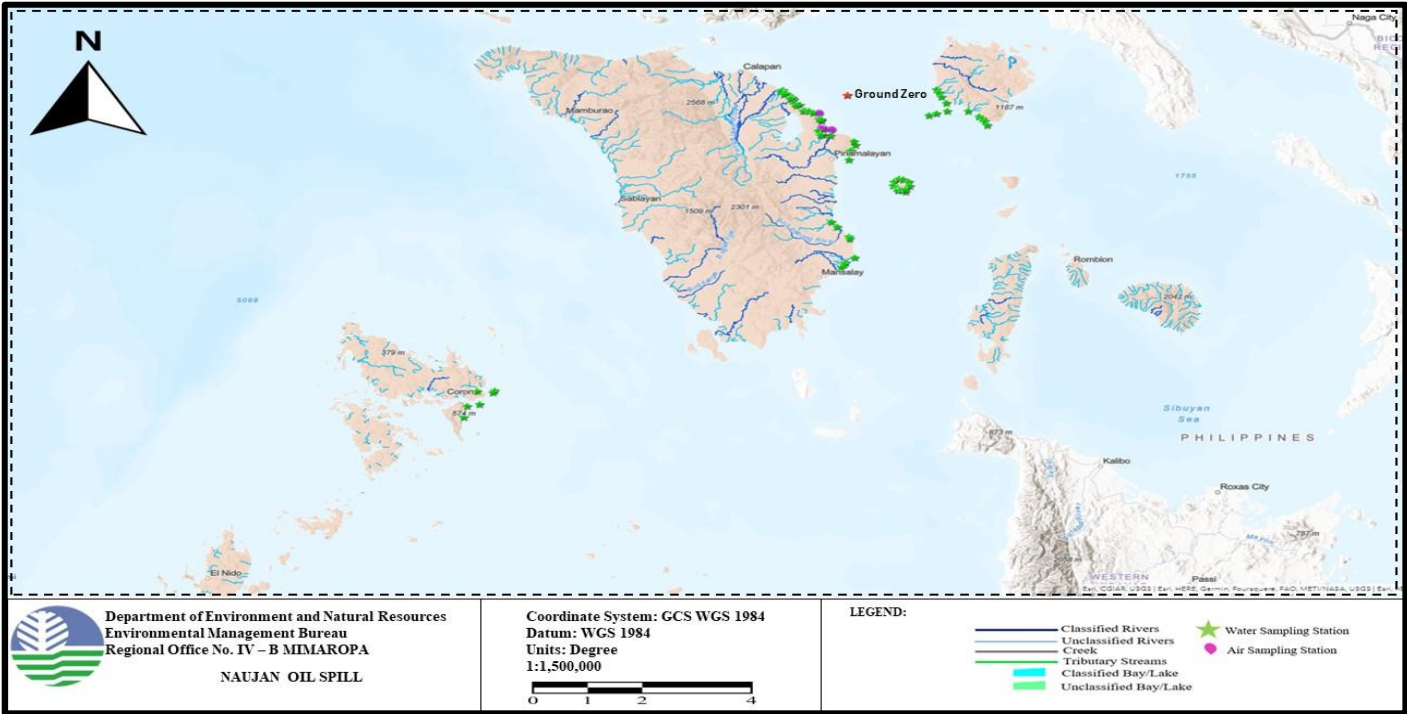


**SAMPLING STATIONS AND RESULTS OF ANALYSIS – GROUND ZERO**



Source	Station No.	Station Identification	Date of Sampling	Results	Classification	Current Beneficial Use	WQG	Remarks
Alleged oil Spillage Area in Naujan, Oriental Mindoro	1	13°18.924 N, 121°31.854 E 11 kms from the coast of Brgy Estrella Naujan	March 1, 2023	36 mg/L	Class SD	navigation	5 mg/L	EXCEEDANCE
Tablas Strait (Oil Spillage Area), Naujan, Oriental Mindoro	1	13.314983, 121.529231 Balingawan Point (Oil Spillage Area)	March 2, 2023	8 mg/L	Class SD	navigation	5 mg/L	EXCEEDANCE
			March 14, 2023	12 mg/L				

**SAMPLING STATIONS AND RESULTS OF ANALYSIS – NAUJAN, ORIENTAL MINDORO (MARCH 1 – 10, 2023)**

Source	Station No.	Station Identification	Classification	Current Beneficial Usage	WQG	Date of Sampling									
						March 1, 2023	March 2, 2023	March 3, 2023	March 4, 2023	March 5, 2023	March 6, 2023	March 7, 2023	March 8, 2023	March 9, 2023	March 10, 2023
Naujan Municipal Waters	1	Estrella	Class SB	Swimming, fishing, tourist area, docking of boat, residential area (20-30 meters away from the beach)	2 mg/L	2 mg/L	5 mg/L	3 mg/L	8 mg/L	3 mg/L	<1 mg/L	16 mg/L	2 mg/L	1 mg/L	2 mg/L
	2	Sta. Cruz	Class SC	Fishing, docking of boat, swimming	3 mg/L	13 mg/L	5 mg/L	3 mg/L	13 mg/L	<1 mg/L	3 mg/L	9 mg/L	2 mg/L	<1 mg/L	3 mg/L
	3	San Jose (Sitio Pitogo)	Class SB	Swimming, presence of beach resort, tourist area	2 mg/L	<1 mg/L	4 mg/L	49 mg/L	9 mg/L	16 mg/L	1 mg/L	30 mg/L	4 mg/L	7 mg/L	3 mg/L

	4	San Jose (Sitio 1)	Class SC	Docking, fishing, swimming with residential area	3 mg/L	11 mg/L	5 mg/L	8 mg/L	12 mg/L	10 mg/L	3 mg/L	31 mg/L	15 mg/L	11 mg/L	34 mg/L
	5	Antipolo/San Jose Proper	Class SC	Swimming, docking of boat, fishing, residential area	3 mg/L	21 mg/L	NO SAMPLING WAS CONDUCTED PER ADVICE OF MDRRMO/PCG/BANTAY DAGAT AND FISHERY MANAGEMENT UNIT DUE TO BAD WEATHER								-
	6	Brgy. Melgar A/ Pitogo Beach	Class SB	Swimming with residential area	2 mg/L	7 mg/L	8 mg/L	3 mg/L	15 mg/L	2 mg/L	5 mg/L	8 mg/L	19 mg/L	10 mg/L	32 mg/L
	7	Melgar B/ Papangkil Beach	Class SC	Swimming, fishing area, with residential area	3 mg/L	9 mg/L	5 mg/L	6 mg/L	11mg/L	<1 mg/L	9 mg/L	11 mg/L	22 mg/L	3 mg/L	9 mg/L

	8	Buloc-Buloc Fish Sanctuary	Class SA	Tourist area, fish sanctuary	1 mg/L	<1 mg/L	NO SAMPLING WAS CONDUCTED PER ADVICE OF MDRRMO/PCG/BANTAY DAGAT AND FISHERY MANAGEMENT UNIT DUE TO BAD WEATHER	9 mg/L	NO SAMPLING WAS CONDUCTED PER ADVICE OF MDRRMO/PCG/BANTAY DAGAT AND FISHERY MANAGEMENT UNIT DUE TO BAD WEATHER	-
	9	Montemayor Proper	Class SA	Swimming, fishing	1 mg/L	2 mg/L		5 mg/L		-
	10	Masaguing	Class SA	Swimming, fishing	1 mg/L	<1 mg/L		12 mg/L		-
	11	Tujod Fish Sanctuary	Class SA	Fish sanctuary	1 mg/L	15 mg/L		8 mg/L		-

**SAMPLING STATIONS AND RESULTS OF ANALYSIS – NAUJAN, ORIENTAL MINDORO (MARCH 11 TO 15, 2023)**

Source	Station No.	Station Identification	Classification	Current Beneficial Usage	WQG	Date of Sampling				
						March 11, 2023	March 12, 2023	March 13, 2023	March 14, 2023	March 15, 2023
Naujan Municipal Waters	1	Estrella	Class SB	Swimming, fishing, tourist area, docking of boat, residential area (20-30 meters away from the beach)	2 mg/L	30 mg/L	9 mg/L	7 mg/L	7 mg/L	14 mg/L
	2	Sta. Cruz	Class SC	Fishing, docking of boat, swimming	3 mg/L	1 mg/L	18 mg/L	2 mg/L	10 mg/L	4 mg/L
	3	San Jose (Sitio Pitogo)	Class SB	Swimming, presence of beach resort, tourist area	2 mg/L	19 mg/L	5 mg/L	4 mg/L	10 mg/L	9 mg/L
	4	San Jose (Sitio 1)	Class SC	Docking, fishing, swimming with residential area	3 mg/L	6 mg/L	8 mg/L	14 mg/L	10 mg/L	6 mg/L
	5	Antipolo/San Jose Proper	Class SC	Swimming, docking of boat, fishing, residential area	3 mg/L	NO SAMPLING WAS CONDUCTED PER ADVICE OF MDRRMO/PCG/BANTAY DAGAT AND FISHERY MANAGEMENT UNIT	-	4 mg/L	-	-

						DUE TO BAD WEATHER				
	6	Brgy. Melgar A/ Pitogo Beach	Class SB	Swimming with residential area	2 mg/L	<1 mg/L	11 mg/L	1 mg/L	55 mg/L	6 mg/L
	7	Melgar B/ Papangkil Beach	Class SC	Swimming, fishing area, with residential area	3 mg/L	<1 mg/L	12 mg/L	8 mg/L	23 mg/L	10 mg/L
	8	Buloc-Buloc Fish Sanctuary	Class SA	Tourist area, fish sanctuary	1 mg/L	-	-	12 mg/L	-	-
	9	Montemayor Proper	Class SA	Swimming, fishing	1 mg/L	-	-	30 mg/L	-	-
	10	Masaguig	Class SA	Swimming, fishing	1 mg/L	-	-	15 mg/L	-	-
	11	Tujod Fish Sanctuary	Class SA	Fish sanctuary	1 mg/L	-	-	12 mg/L	-	-

**SAMPLING STATIONS AND RESULTS OF ANALYSIS – NAUJAN MUNICIPAL WATERS 400m AWAY FROM SHORE**

Source	Station No.	Station Identification	Classification	Current Beneficial Usage	WQG	Date of Sampling		
						March 4, 2023	March 13, 2023	March 14, 2023
Naujan Municipal Waters 400m away from shore	1	Estrella Beach Bay	Class SB	swimming, fishing, tourist area, docking of boat, residential area (20-30 meters away from the beach)	2 mg/L	-	<1 mg/L	14 mg/L
	2	Naujan Cemetery	Class SC	Fishing, docking of boat, swimming	3 mg/L	-	8 mg/L	8 mg/L
	3	Brgy Sta. Cruz	Class SB	swimming, presence of beach resort, tourist area	2 mg/L	-	3 mg/L	9 mg/L
	4	San Jose 1	Class SC	docking of boat, fishing, swimming, with residential area	3 mg/L	-	2 mg/L	26 mg/L
	5	San Jose Proper	Class SC	swimming, docking of boat, fishing, residential area	3 mg/L	-	4 mg/L	25 mg/L
	6	Pitugo Beach	Class SB	swimming, with residential area	2 mg/L	-	2 mg/L	20 mg/L
	7	Papangkil Beach	Class SC	swimming, fishing with residential area	3 mg/L	-	12 mg/L	13 mg/L
	8	Buloc-Buloc (Mangrove)	Class SA	Tourist area, Fish sanctuary	1 mg/L	9 mg/L	12 mg/L	7 mg/L

	9	Montemayor	Class SB	swimming, fishing	2 mg/L	5 mg/L	30 mg/L	10 mg/L
	10	Masaguing	Class SA	swimming, fishing	1 mg/L	12 mg/L	15 mg/L	7 mg/L
	11	Tujod Fish Sanctuary	Class SA	Fish sanctuary	1 mg/L	8 mg/L	12 mg/L	4 mg/L

**SAMPLING STATIONS AND RESULTS OF ANALYSIS - PINAMALAYAN, ORIENTAL MINDORO**

Source	Station No.	Station Identification	Current Beneficial Use	Date of Sampling										Classification	WQG
				March 2	March 7	March 8	March 9	March 10	March 11	March 12	March 13	March 14	March 15		
Pinamalayan Bay (Coastal), Oriental Mindoro	1	Brgy. Lumang Bayan	Swimming, docking of boat	<1 mg/L	12 mg/L	2 mg/L	<1 mg/L	27 mg/L	24 mg/L	5 mg/L	(no data) broken bottle	8 mg/L	5 mg/L	Class SC	3 mg/L



**SAMPLING STATIONS AND RESULTS OF ANALYSIS – PINAMALAYAN BAY (MPA) , ORIENTAL MINDORO (MARCH 1 TO 10, 2023)**

Source	Station No.	Station Identification	Current Beneficial Use	Classification	WQG	Date of Sampling									
						March 1, 2023	March 2, 2023	March 3, 2023	March 4, 2023	March 5, 2023	March 6, 2023	March 7, 2023	March 8, 2023	March 9, 2023	March 10, 2023
Pinamalayan Bay (MPA), Oriental Mindoro	1	Simborio Fish Sanctuary	Fishing	Class SA	1 mg/L	-	9 mg/L	4 mg/L	9 mg/L	3 mg/L	2 mg/L	35 mg/L	5 mg/L	2 mg/L	12 mg/L
	2	Ginapangan Fish Sanctuary	Fish sanctuary	Class SA	1 mg/L	-	47 mg/L	6 mg/L	17 mg/L	3 mg/L	1 mg/L	17 mg/L	3 mg/L	<1 mg/L	5 mg/L
	3	Pili Fish Sanctuary	Swimming, fishing, fish sanctuary	Class SA	1 mg/L	-	4 mg/L	4 mg/L	6 mg/L	5 mg/L	1 mg/L	21 mg/L	4 mg/L	2 mg/L	6 mg/L
	4	Ranzo Fish Sanctuary	Swimming, fishing	Class SA	1 mg/L	-	3 mg/L	6 mg/L	2 mg/L	3 mg/L	16 mg/L	7 mg/L	1 mg/L	4 mg/L	5 mg/L
		MAR Francisco	(NEW STATION)			-	-	-	-	-	-	10 mg/L	3 mg/L	5 mg/L	4 mg/L

**SAMPLING STATIONS AND RESULTS OF ANALYSIS – PINAMALAYAN BAY (MPA) , ORIENTAL MINDORO (MARCH 11 TO 15, 2023)**

Source	Station No.	Station Identification	Current Beneficial Use	Classification	WQG	Date of Sampling				
						March 11, 2023	March 12, 2023	March 13, 2023	March 14, 2023	March 15, 2023
Pinamalayan Bay (MPA), Oriental Mindoro	1	Simborio Fish Sanctuary	Fishing	Class SA	1 mg/L	-	27 mg/L	60 mg/L	6 mg/L	9 mg/L
	2	Ginapangan Fish Sanctuary	Fish sanctuary	Class SA	1 mg/L	27 mg/L	15 mg/L	9 mg/L	5 mg/L	8 mg/L
	3	Pili Fish Sanctuary	Swimming, fishing, fish sanctuary	Class SA	1 mg/L	9 mg/L	17 mg/L	9 mg/L	8 mg/L	8 mg/L
	4	Ranzo Fish Sanctuary	Swimming, fishing	Class SA	1 mg/L	-	9 mg/L	(no data) broken bottle	5 mg/L	55 mg/L
		MAR Francisco	(NEW STATION)			3 mg/L	<1 mg/L	29 mg/L	8 mg/L	5 mg/L

**SAMPLING STATIONS AND RESULTS OF ANALYSIS - POLA, ORIENTAL MINDORO**  
**(MARCH 1 TO 10, 2023)**

Source	Station No.	Station Identification	Classification	Current Beneficial Use	WQG	Date of Sampling									
						March 1, 2023	March 2, 2023	March 3, 2023	March 4, 2023	March 5, 2023	March 6, 2023	March 7, 2023	March 8, 2023	March 9, 2023	March 10, 2023
Pola Shoreline	1	Misong MPA	Class SA	Tourist area, fishing, fish sanctuary	1 mg/L	-	20 mg/L	5 mg/L	3 mg/L	-	4 mg/L	9 mg/L	12 mg/L	3 mg/L	2 mg/L
	2	Central Tagumpay MPA	Class SA	Tourist area	1 mg/L	-	10 mg/L	7 mg/L	15 mg/L	-	7 mg/L	6 mg/L	17 mg/L	4 mg/L	2 mg/L
	3	Tuguihan MPA	Class SC	Port of Pola, Docking of boat, fishing sanctuary	3 mg/L	-	-	6 mg/L	25 mg/L	-	5 mg/L	5 mg/L	12 mg/L	34 mg/L	<1 mg/L
	4	Casiligan River Estuary	Class SA	Casiligan drainage area	1 mg/L	-	-	4 mg/L	4 mg/L	-	4 mg/L	6 mg/L	5 mg/L	3 mg/L	11 mg/L
	5	Calima MPA	Class SA	Fishing sanctuary, fishing	1 mg/L	-	3 mg/L	8 mg/L	5 mg/L	NO SAMPLING WAS CONDUCTED PER ADVICE OF MDRRMO/PCG/BANTAY			1 mg/L	3 mg/L	14 mg/L

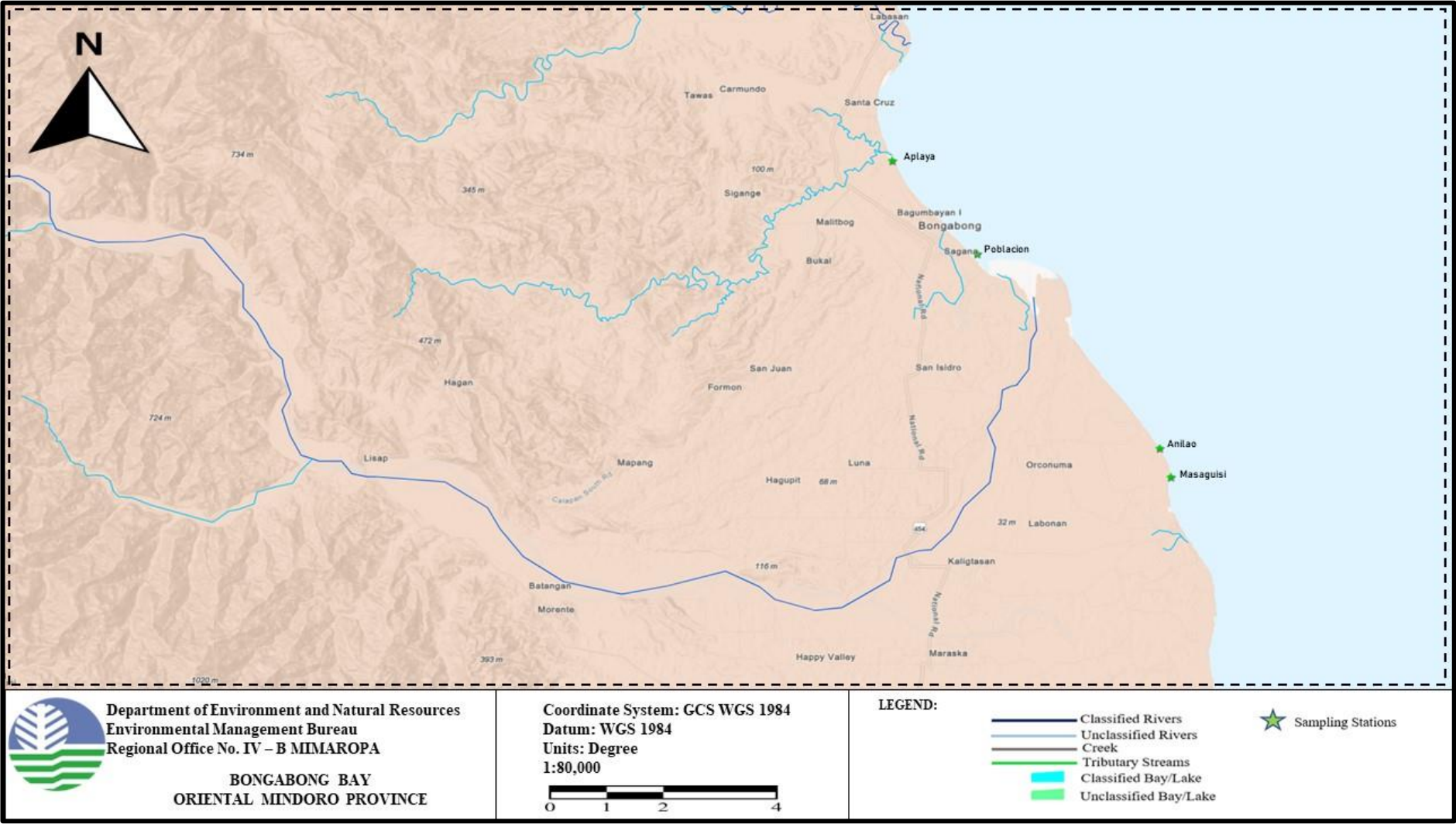
	6	Polacay Beach	Class SC	Tourist area, presence of resort	3 mg/L	-	1 mg/L	4 mg/L	5 mg/L	DAGAT AND FISHERY MANAGEMENT UNIT DUE TO BAD WEATHER	3 mg/L	<1 mg/L	18 mg/L
	7	Casiligan River Mangrove	Class SB	Within mangrove area, near boat docking area	2 mg/L	-	-	-	14 mg/L		2 mg/L	2 mg/L	<1 mg/L
		Kwebang Tagumpay	Class SC	Within private resort, fishing, swimming	3 mg/L	-	-	10 mg/L	-		8 mg/L	1 mg/L	<1 mg/L

**SAMPLING STATIONS AND RESULTS OF ANALYSIS - POLA, ORIENTAL MINDORO**  
**(MARCH 11 TO 15, 2023)**

Source	Station No.	Station Identification	Classification	Current Beneficial Use	WQG	Date of Sampling				
						March 11, 2023	March 12, 2023	March 13, 2023	March 14, 2023	March 15, 2023
Pola Shoreline	1	Misong MPA	Class SA	Tourist area, fishing, fish sanctuary	1 mg/L	3 mg/L	7 mg/L	1 mg/L	2 mg/L	-
	2	Central Tagumpay MPA	Class SA	Tourist area	1 mg/L	1 mg/L	5 mg/L	9 mg/L	7 mg/L	-
	3	Tuguihan MPA	Class SC	Port of Pola, Docking of boat, fishing sanctuary	3 mg/L	15 mg/L	12 mg/L	8 mg/L	8 mg/L	-
	4	Casiligan River Estuary	Class SA	Casiligan drainage area	1 mg/L	12 mg/L	27 mg/L	5 mg/L	5 mg/L	-
	5	Calima MPA	Class SA	Fishing sanctuary, fishing	1 mg/L	3 mg/L	17 mg/L	3 mg/L	3 mg/L	-

	6	Polacay Beach	Class SC	Tourist area, presence of resort	3 mg/L	18 mg/L	6 mg/L	8 mg/L	1 mg/L	-
	7	Casiligan River Mangrove	Class SB	Within mangrove area, near boat docking area	2 mg/L	<1 mg/L	4 mg/L	10 mg/L	6 mg/L	-
		Kwebang Tagumpay	Class SC	Within private resort, fishing, swimming	3 mg/L	3 mg/L	<1 mg/L	4 mg/L	5 mg/L	-

SAMPLING STATIONS AND RESULTS OF ANALYSIS - BONGABONG, ORIENTAL MINDORO



**SAMPLING STATIONS AND RESULTS OF ANALYSIS – BONGABONG, ORIENTAL MINDORO  
(MARCH 1 TO 10, 2023)**

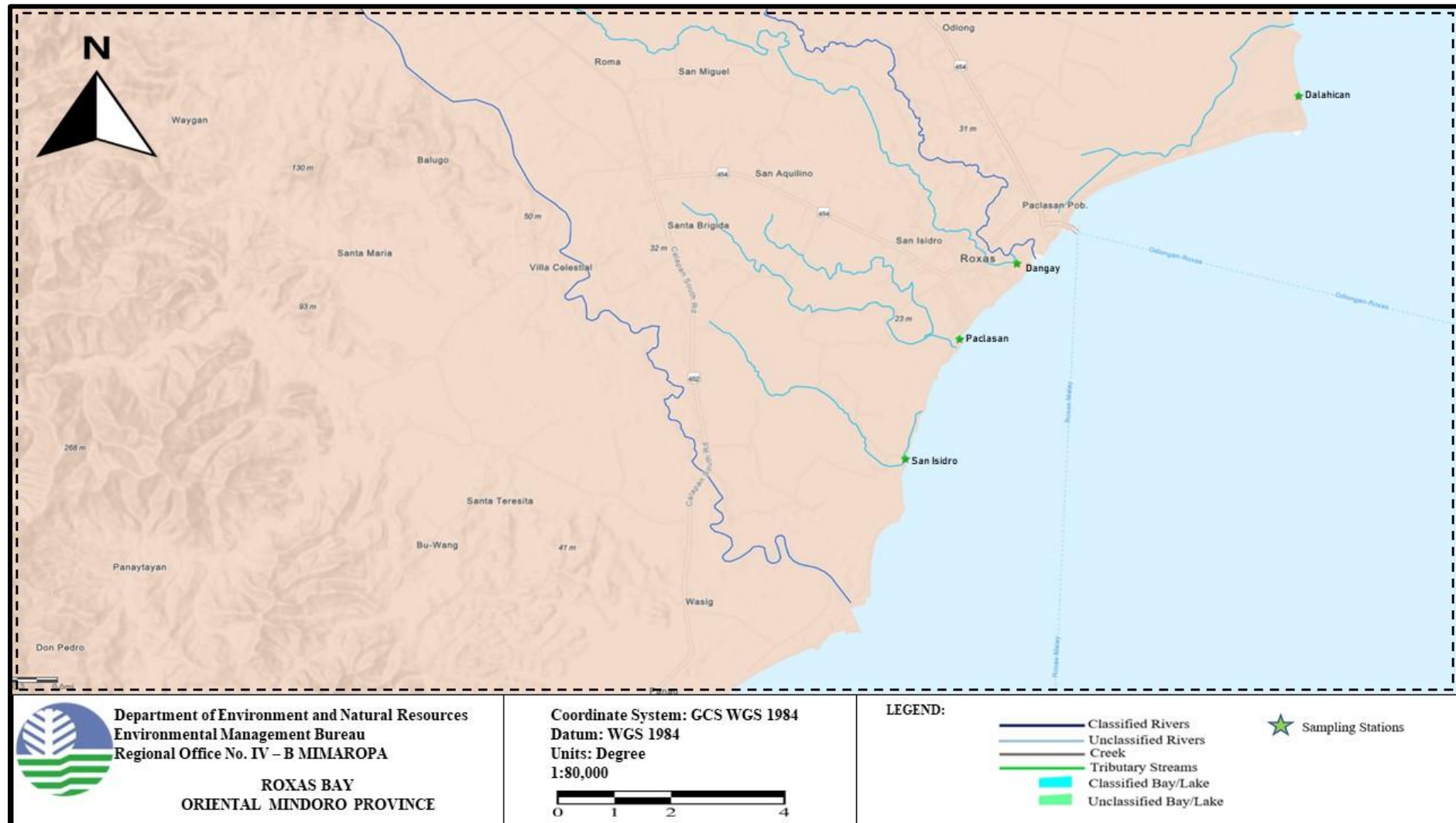
Source	Station No.	Station Identification	Classification	Current Beneficial Use	WQG	Date of Sampling									
						March 1, 2023	March 2, 2023	March 3, 2023	March 4, 2023	March 5, 2023	March 6, 2023	March 7, 2023	March 8, 2023	March 9, 2023	March 10, 2023
Bongabong Bay, Bongabong, Oriental Mindoro	1	Aplaya	Class SB	Swimming, fishing area, docking of boat	2 mg/L	-	-	5 mg/L	10 mg/L	3 mg/L	3 mg/L	6 mg/L	1 mg/L	12 mg/L	12 mg/L
	2	Poblacion	Class SA	Swimming, fishing area	1 mg/L	-	-	4 mg/L	6 mg/L	2 mg/L	3 mg/L	9 mg/L	2 mg/L	7 mg/L	<1 mg/L
	3	Anilao	Class SA	Swimming, marine protected area	1 mg/L	-	-	6 mg/L	11 mg/L	<1 mg/L	19 mg/L	12 mg/L	5 mg/L	3 mg/L	2 mg/L
	4	Masaguisi	Class SB	Marine, protected area, swimming	2 mg/L	-	-	3 mg/L	6 mg/L	13 mg/L	4 mg/L	7 mg/L	9 mg/L	12 mg/L	14 mg/L



**SAMPLING STATIONS AND RESULTS OF ANALYSIS – BONGABONG, ORIENTAL MINDORO  
(MARCH 11 TO 15, 2023)**

Source	Station No.	Station Identification	Classification	Current Beneficial Use	WQG	Date of Sampling				
						March 11, 2023	March 12, 2023	March 13, 2023	March 14, 2023	March 15, 2023
Bongabong Bay, Bongabong, Oriental Mindoro	1	Aplaya	Class SB	Swimming, fishing area, docking of boat	2 mg/L	<1 mg/L	24 mg/L	9 mg/L	4 mg/L	7 mg/L
	2	Poblacion	Class SA	Swimming, fishing area	1 mg/L	3 mg/L	3 mg/L	2 mg/L	7 mg/L	1 mg/L
	3	Anilao	Class SA	Swimming, marine protected area	1 mg/L	9 mg/L	2 mg/L	6mg/L	5 mg/L	28 mg/L
	4	Masaguisi	Class SB	Marine, protected area, swimming	2 mg/L	5 mg/L	9 mg/L	3 mg/L	7 mg/L	7 mg/L

## SAMPLING STATIONS AND RESULTS OF ANALYSIS - ROXAS, ORIENTAL MINDORO



**SAMPLING STATIONS AND RESULTS OF ANALYSIS – ROXAS, ORIENTAL MINDORO  
(MARCH 1 TO 10, 2023)**

Source	Station No.	Station Identification	Classification	Current Beneficial Usage	WQG	Date of Sampling									
						March 1, 2023	March 2, 2023	March 3, 2023	March 4, 2023	March 5, 2023	March 6, 2023	March 7, 2023	March 8, 2023	March 9, 2023	March 10, 2023
Roxas Bay, Roxas, Oriental Mindoro	1	Dalahican	Class SB	Swimming, fishing, with household near the beach front	2 mg/L	-	-	4 mg/L	6 mg/L	14 mg/L	4 mg/L	8 mg/L	1 mg/L	34 mg/L	4 mg/L
	2	Dangay	Class SB	Swimming, fishing, household area	2 mg/L	-	-	4 mg/L	5 mg/L	3 mg/L	4 mg/L	5 mg/L	2 mg/L	22 mg/L	5 mg/L
	3	Paclasan	Class SB	Swimming, fishing, household area	2 mg/L	-	-	4 mg/L	4 mg/L	2 mg/L	4 mg/L	4 mg/L	2 mg/L	4 mg/L	3 mg/L
	4	San Isidro	Class SA	Swimming, fishing, household area	1 mg/L	-	-	3 mg/L	15 mg/L	<1 mg/L	3 mg/L	<1 mg/L	<1 mg/L	11 mg/L	3 mg/L

**SAMPLING STATIONS AND RESULTS OF ANALYSIS – ROXAS, ORIENTAL MINDORO**  
**(MARCH 11 TO 15, 2023)**

Source	Station No.	Station Identification	Classification	Current Beneficial Usage	WQG	Date of Sampling				
						March 11, 2023	March 12, 2023	March 13, 2023	March 14, 2023	March 15, 2023
Roxas Bay, Roxas, Oriental Mindoro	1	Dalahican	Class SB	Swimming, fishing, with household near the beach front	2 mg/L	2 mg/L	<1 mg/L	22 mg/L	10 mg/L	4 mg/L
	2	Dangay	Class SB	Swimming, fishing, household area	2 mg/L	1 mg/L	<1 mg/L	5 mg/L	7 mg/L	8 mg/L
	3	Paclasan	Class SB	Swimming, fishing, household area	2 mg/L	3 mg/L	<1 mg/L	12 mg/L	15 mg/L	<1 mg/L
	4	San Isidro	Class SA	Swimming, fishing, household area	1 mg/L	6 mg/L	<1 mg/L	<1 mg/L	15 mg/L	23 mg/L

**SAMPLING STATIONS AND RESULTS OF ANALYSIS – GLORIA, ORIENTAL MINDORO  
(MARCH 11 TO 15, 2023)**

Source	Station No.	Station Identification	Classification	Current Beneficial Usage	WQG	Date of Sampling									
						March 7, 2023	March 8, 2023	March 9, 2023	March 10, 2023	March 11, 2023	March 12, 2023	March 13, 2023	March 14, 2023	March 15, 2023	
Gloria (Coastal Waters), Oriental Mindoro	1	Aglasin (MPA)	Class SB	Marine protected area, swimming	2 mg/L	<1 mg/L	2 mg/L	2 mg/L	19 mg/L	<1 mg/L	51 mg/L	2 mg/L	8 mg/L	<1 mg/L	
	2	Maragooc	Class SB	Swimming, fishing	2 mg/L	5 mg/L	2 mg/L	3 mg/L	44 mg/L	1 mg/L	38 mg/L	46 mg/L	6 mg/L	4 mg/L	
	3	Guimbohan	Class SA	Swimming, fishing	1 mg/L	<1 mg/L	1 mg/L	2 mg/L	12 mg/L	1 mg/L	<1 mg/L	35 mg/L	6 mg/L	2 mg/L	
	4	Sta. Theresa (MPA)	Class SA	Marine protected area, swimming, fishing	1 mg/L	15 mg/L	1 mg/L	6 mg/L	45 mg/L	4 mg/L	3 mg/L	6 mg/L	15 mg/L	4 mg/L	
	5	Balete	Class SB	With mangrove area, swimming, fishing	2 mg/L	10 mg/L	4 mg/L	1 mg/L	5 mg/L	5 mg/L	3 mg/L	102 mg/L	29 mg/L	25 mg/L	

	6	San Antonio	Class SB	Swimming, fishing	2 mg/L	12 mg/L	10 mg/L	2 mg/L	3 mg/L	-	<1 mg/L	27 mg/L	1 mg/L	6 mg/L
	7	Kawit	Class SB	Swimming, fishing	2 mg/L	13 mg/L	6 mg/L	<1 mg/L	8 mg/L	3 mg/L	<1 mg/L	23 mg/L	13 mg/L	<1 mg/L
	8	Tambong	Class SB	Marine protected area, swimming, fishing	2 mg/L	13 mg/L	3 mg/L	2 mg/L	2 mg/L	20 mg/L	10 mg/L	19 mg/L	1 mg/L	3 mg/L

***SAMPLING STATIONS AND RESULTS OF ANALYSIS – TAYTAY, PALAWAN***

Source	Station No.	Station Identification	Current Beneficial Use	Classification	WQG	Date of Sampling
						March 11, 2023
Casian, Taytay, Palawan	1	Teecas	Tourist area, sanctuary	Class SA	1 mg/L	31 mg/L
	2	Maliao	Fishing, docking of boat, swimming	Class SC	3 mg/L	2 mg/L
	3	Casian Port	Swimming, fishing, tourist area, docking of boat, residential area (20-30 meters away from the beach)	Class SB	2 mg/L	2 mg/L
	4	Amianan	Swimming, fishing, tourist area, docking of boat, residential area (20-30 meters away from the beach)	Class SB	2 mg/L	18 mg/L
	5	Canique	Swimming, fishing, tourist area, docking of boat, residential area (20-30 meters away from the beach)	Class SB	2 mg/L	22 mg/L
	6	Amianan East	Swimming, fishing, tourist area, docking of boat, residential area (20-30 meters away from the beach)	Class SB	2 mg/L	12 mg/L

***\*Based on the results of the initial water quality sampling conducted on 11 March 2023, the water samples collected at Teecas, Amianan, Canique, and Amianan East, failed to meet the Water Quality Standards as provided for under DENR Administrative Order No. 2016-08.***

Source	Station No.	Station Identification	Current Beneficial Use	Classification	WQG	Date of Sampling
						March 13, 2023
Brgy. Biton, Taytay, Palawan	1	Tagpao	swimming, fishing, tourist area, docking of boat, residential area (20-30 meters away from the beach)	Class SB	2 mg/L	18 mg/L
	2	Baled	swimming, fishing, tourist area, docking of boat, residential area (20-30 meters away from the beach)	Class SB	2 mg/L	13 mg/L
	3	Dinamayan Island	swimming, fishing, tourist area, docking of boat, residential area (20-30 meters away from the beach)	Class SB	2 mg/L	40 mg/L

Source	Station No.	Station Identification	Current Beneficial Use	Classification	WQG	Date of Sampling
						March 13, 2023
Brgy. Bantulan, Taytay, Palawan	1	Sader	Fishing, docking of boat, swimming	Class SC	3 mg/L	43 mg/L
	2	Bantulan Proper	swimming, fishing, tourist area, docking of boat, residential area (20-30 meters away from the beach)	Class SB	2 mg/L	13 mg/L

Source	Station No.	Station Identification	Current Beneficial Use	Classification	WQG	Date of Sampling
						March 13, 2023
Brgy. Calawag, Taytay, Palawan	1	Amogues	swimming, fishing, tourist area, docking of boat, residential area (20-30 meters away from the beach)	Class SB	2 mg/L	3 mg/L
	2	Calampang	Fishing, docking of boat, swimming	Class SC	3 mg/L	6 mg/L
	3	Calawag Proper	Fishing, docking of boat, swimming	Class SC	3 mg/L	3 mg/L

  
**JOE AMIL M. SALINO**  
Regional Director  
EMB – MIMAROPA Region

