

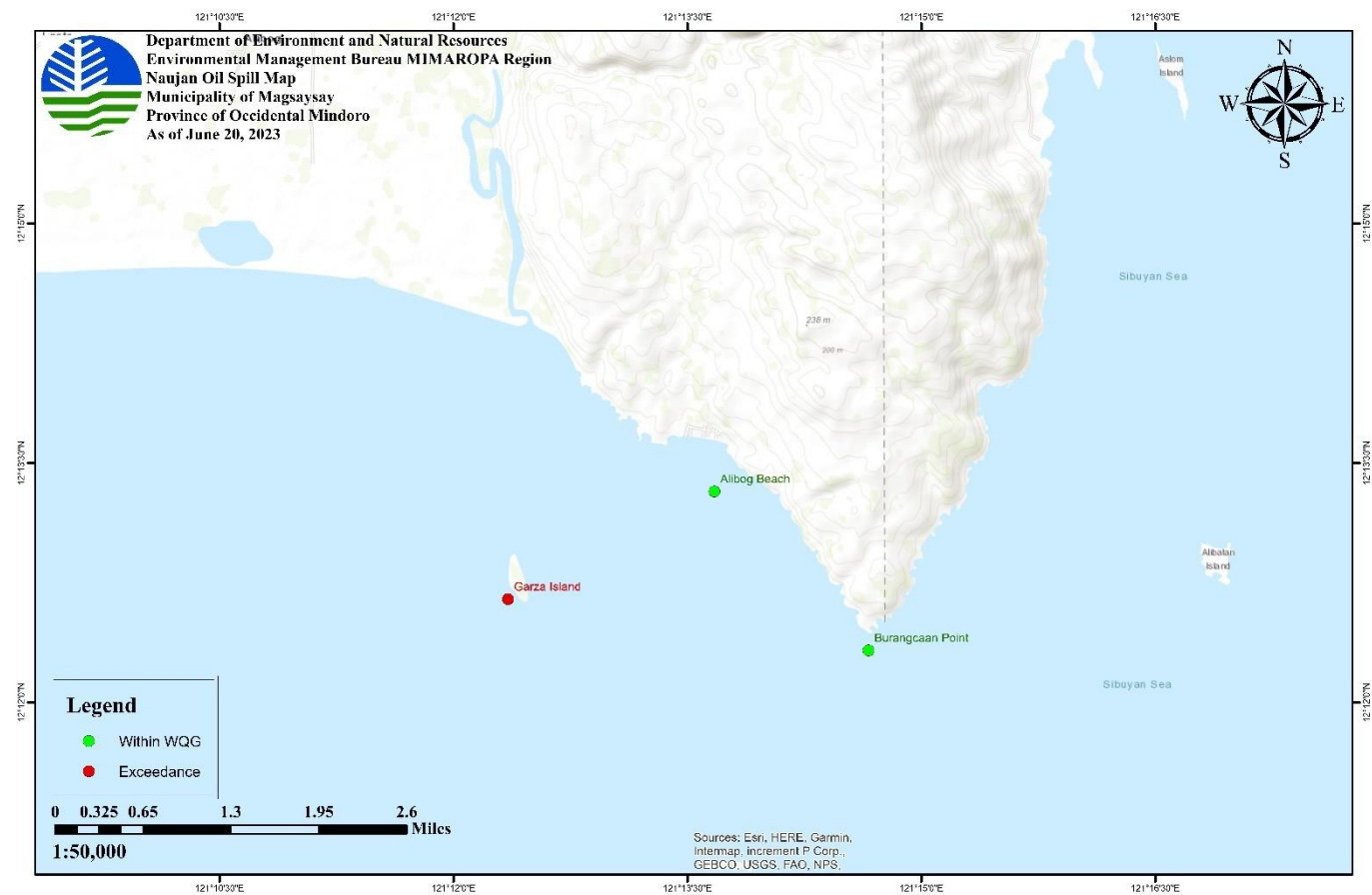
WATER QUALITY MONITORING

OIL AND GREASE WATER SAMPLING STATIONS

| PROVINCE | CITY/ MUNICIPALITY | TOTAL SAMPLING STATIONS FOR OIL AND GREASE: | | | DATE OF LAST SAMPLING CONDUCTED |
|--------------------|--------------------|---|-------------------|--------------|---------------------------------|
| | | TOTAL SAMPLING STATIONS IN THE CITY/MUN. | WITHIN NORMAL WQG | EXCEEDED WQG | |
| OCCIDENTAL MINDORO | MAGSAYSAY | 3 | 2 | 1 | 20 June 2023 |
| OCCIDENTAL MINDORO | SAN JOSE | 2 | 1 | 1 | 20 June 2023 |
| ORIENTAL MINDORO | BACO | 1 | 0 | 1 | 23 August 2023 |
| ORIENTAL MINDORO | BANSUD | 2 | 0 | 2 | 29 July 2023 |
| ORIENTAL MINDORO | BONGABONG | 4 | 0 | 4 | 29 July 2023 |
| ORIENTAL MINDORO | BULALACAO | 3 | 2 | 1 | 30 July 2023 |
| ORIENTAL MINDORO | CALAPAN CITY | 7 | 3 | 4 | 31 July 2023 |
| ORIENTAL MINDORO | GLORIA | 8 | 4 | 4 | 28 July 2023 |
| ORIENTAL MINDORO | MANSALAY | 2 | 1 | 1 | 30 July 2023 |
| ORIENTAL MINDORO | NAUJAN | 10 | 1 | 9 | 31 July 2023 |
| ORIENTAL MINDORO | POLA | 8 | 1 | 7 | 22 August 2023 |
| ORIENTAL MINDORO | PINAMALAYAN | 6 | 1 | 5 | 26 July 2023 |
| ORIENTAL MINDORO | PUERTO GALERA | 34 | 21 | 13 | 23 August 2023 |
| ORIENTAL MINDORO | ROXAS | 4 | 3 | 1 | 31 July 2023 |
| ORIENTAL MINDORO | SAN TEODORO | 2 | 1 | 1 | 23 August 2023 |
| | Total | 96 | 41 | 55 | |

| PROVINCE | CITY/ MUNICIPALITY | BARANGAY | TOTAL SAMPLING STATIONS FOR OIL AND GREASE: | | | DATE OF LAST SAMPLING CONDUCTED |
|----------|--------------------|--------------|---|-------------------|--------------|---------------------------------|
| | | | TOTAL SAMPLING STATIONS IN THE CITY/MUN. | WITHIN NORMAL WQG | EXCEEDED WQG | |
| PALAWAN | TAYTAY | CASIAN | 5 | 5 | 0 | 11 May 2023 |
| PALAWAN | TAYTAY | DEBANGAN | 3 | 3 | 0 | 11 May 2023 |
| PALAWAN | TAYTAY | PAMANTOLON | 2 | 2 | 0 | 11 May 2023 |
| PALAWAN | TAYTAY | PULARAQUEN | 1 | 0 | 1 | 17 May 2023 |
| PALAWAN | TAYTAY | BANTULAN | 2 | 1 | 1 | 17 May 2023 |
| PALAWAN | TAYTAY | CALAWAG | 3 | 0 | 3 | 17 May 2023 |
| PALAWAN | TAYTAY | BETON | 3 | 2 | 1 | 11 May 2023 |
| PALAWAN | TAYTAY | POBLACION | 3 | 0 | 3 | 17 May 2023 |
| PALAWAN | TAYTAY | BARAS | 3 | 2 | 1 | 11 May 2023 |
| | | TOTAL | 25 | 15 | 10 | |

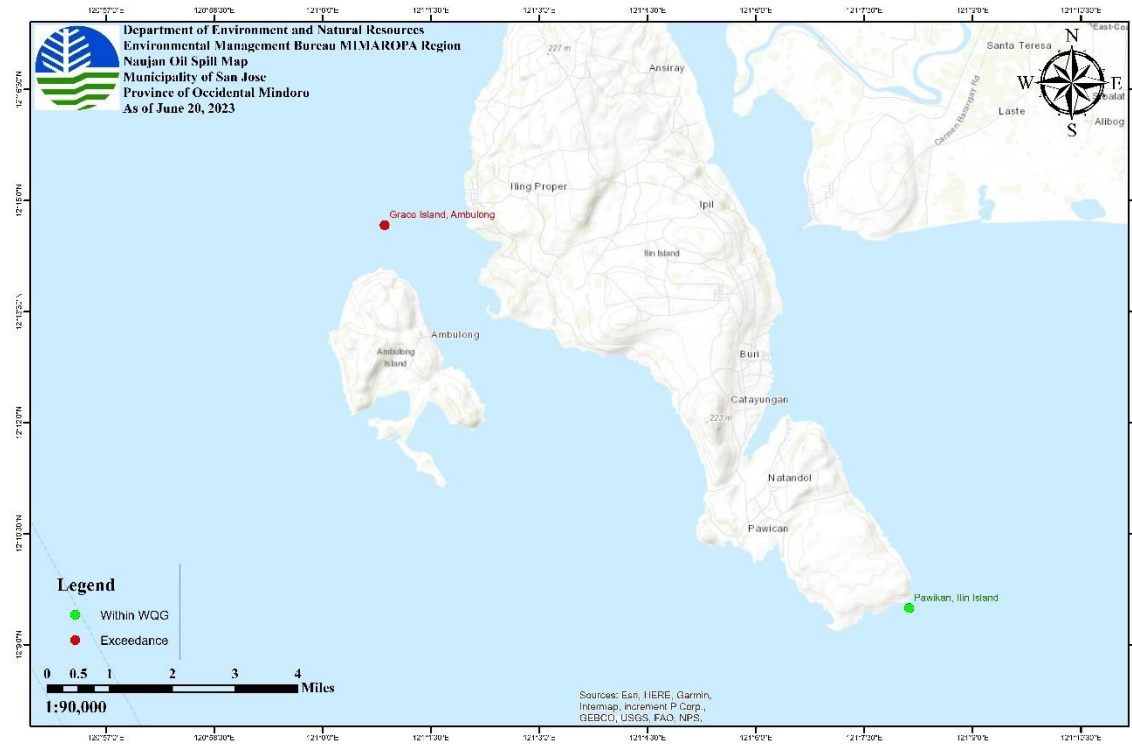
SAMPLING STATIONS AND RESULTS OF ANALYSIS – MAGSAYSAY, OCCIDENTAL MINDORO



SAMPLING STATIONS AND RESULTS OF ANALYSIS – MAGSAYSAY, OCCIDENTAL MINDORO (MARCH 15 TO JUNE 20, 2023)

| Source | Station No. | Station Identification | Classification | Current Beneficial Usage | WQG | Date of Sampling | | | | | |
|-------------------------------|-------------|------------------------|----------------|---|--------|------------------|----------------|----------------|----------------|----------------|---------------|
| | | | | | | March 15, 2023 | March 23, 2023 | March 29, 2023 | April 18, 2023 | April 26, 2023 | June 20, 2023 |
| Magsaysay, Occidental Mindoro | 1 | Burangcaan Point | Class SB | swimming, fishing, tourist area, docking of boat, residential area (20-30 meters away from the beach) | 2 mg/L | 10 mg/L | 4 mg/L | 2 mg/L | 3 mg/L | 30 mg/L | 1 mg/L |
| | 2 | Alibog Beach | Class SB | swimming, fishing, tourist area, docking of boat, residential area (20-30 meters away from the beach) | 2 mg/L | 7 mg/L | 51 mg/L | 6 mg/L | 1 mg/L | 1 mg/L | <1 mg/L |
| | 3 | Garza Island | Class SB | swimming, fishing, tourist area, docking of boat, residential area (20-30 meters away from the beach) | 2 mg/L | 9 mg/L | 7 mg/L | 7 mg/L | 7 mg/L | 4 mg/L | 4 mg/L |

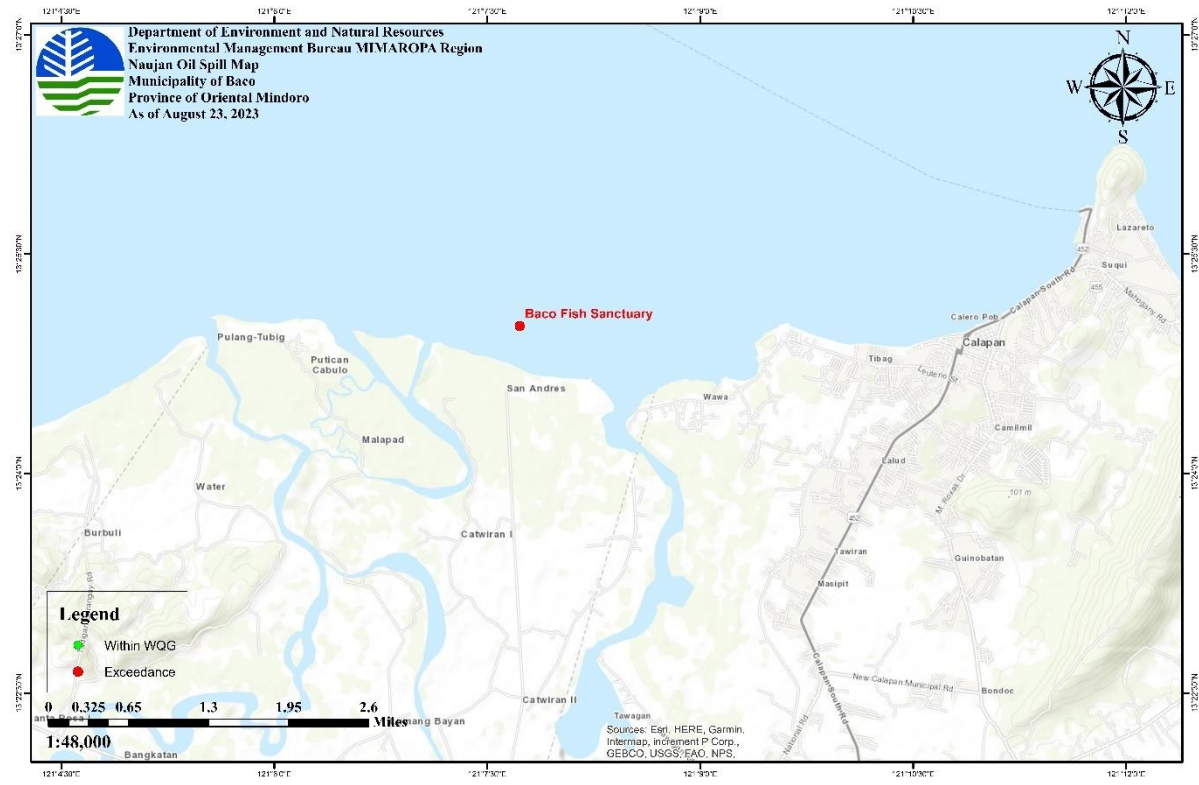
SAMPLING STATIONS AND RESULTS OF ANALYSIS – SAN JOSE, OCCIDENTAL MINDORO



SAMPLING STATIONS AND RESULTS OF ANALYSIS – SAN JOSE, OCCIDENTAL MINDORO (MARCH 15 TO JUNE 20, 2023)

| Source | Station No. | Station Identification | Classification | Current Beneficial Usage | WQG | Date of Sampling | | | | | |
|------------------------------|-------------|------------------------|----------------|---|--------|------------------|----------------|----------------|----------------|----------------|---------------|
| | | | | | | March 15, 2023 | March 23, 2023 | March 29, 2023 | April 18, 2023 | April 26, 2023 | June 20, 2023 |
| San Jose, Occidental Mindoro | 1 | Pawikan, Ilin Island | Class SD | - | 5 mg/L | 6 mg/L | 3 mg/L | 5 mg/L | 8 mg/L | 27 mg/L | 5 mg/L |
| | 2 | Grace Island, Ambulong | Class SB | swimming, fishing, tourist area, docking of boat, residential area (20-30 meters away from the beach) | 2 mg/L | 18 mg/L | 1 mg/L | 12 mg/L | <1 mg/L | 10 mg/L | 6 mg/L |

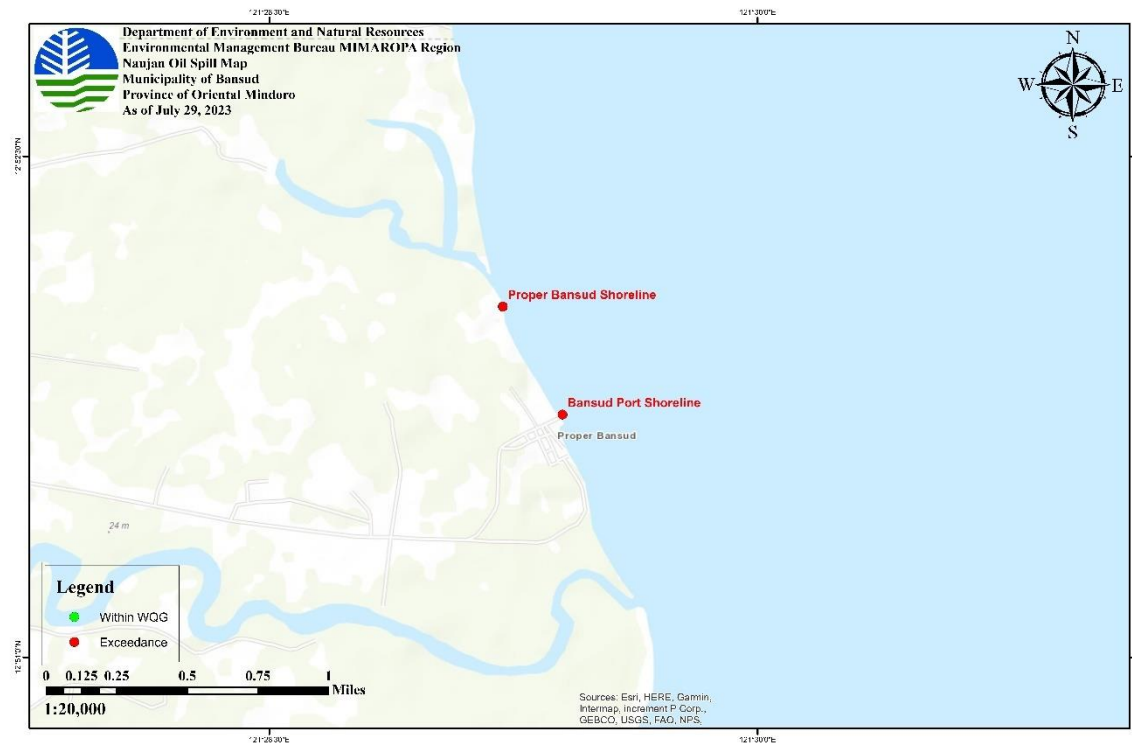
SAMPLING STATIONS AND RESULTS OF ANALYSIS – BACO, ORIENTAL MINDORO



SAMPLING STATIONS AND RESULTS OF ANALYSIS – BACO, ORIENTAL MINDORO (MARCH 16 TO AUGUST 23, 2023)

| Source | Station No. | Station Identification | Classification | Current Beneficial Usage | WQG | Date of Sampling | | | | | | | | | |
|------------------------|-------------|------------------------|----------------|--------------------------|--------|------------------|----------------|----------------|----------------|--------------|--------------|---------------|---------------|---------------|---------------|
| | | | | | | March 16, 2023 | March 24, 2023 | March 31, 2023 | April 18, 2023 | May 08, 2023 | June 7, 2023 | June 22, 2023 | July 13, 2023 | July 26, 2023 | Aug. 23, 2023 |
| Baco, Oriental Mindoro | 1 | Baco Fish Sanctuary | Class SA | Fish sanctuary | 1 mg/L | <1 mg/L | 18 mg/L | 2 mg/L | 5 mg/L | 2 mg/L | <1 mg/L | 6 mg/L | 2 mg/L | 4 mg/L | 5 mg/L |

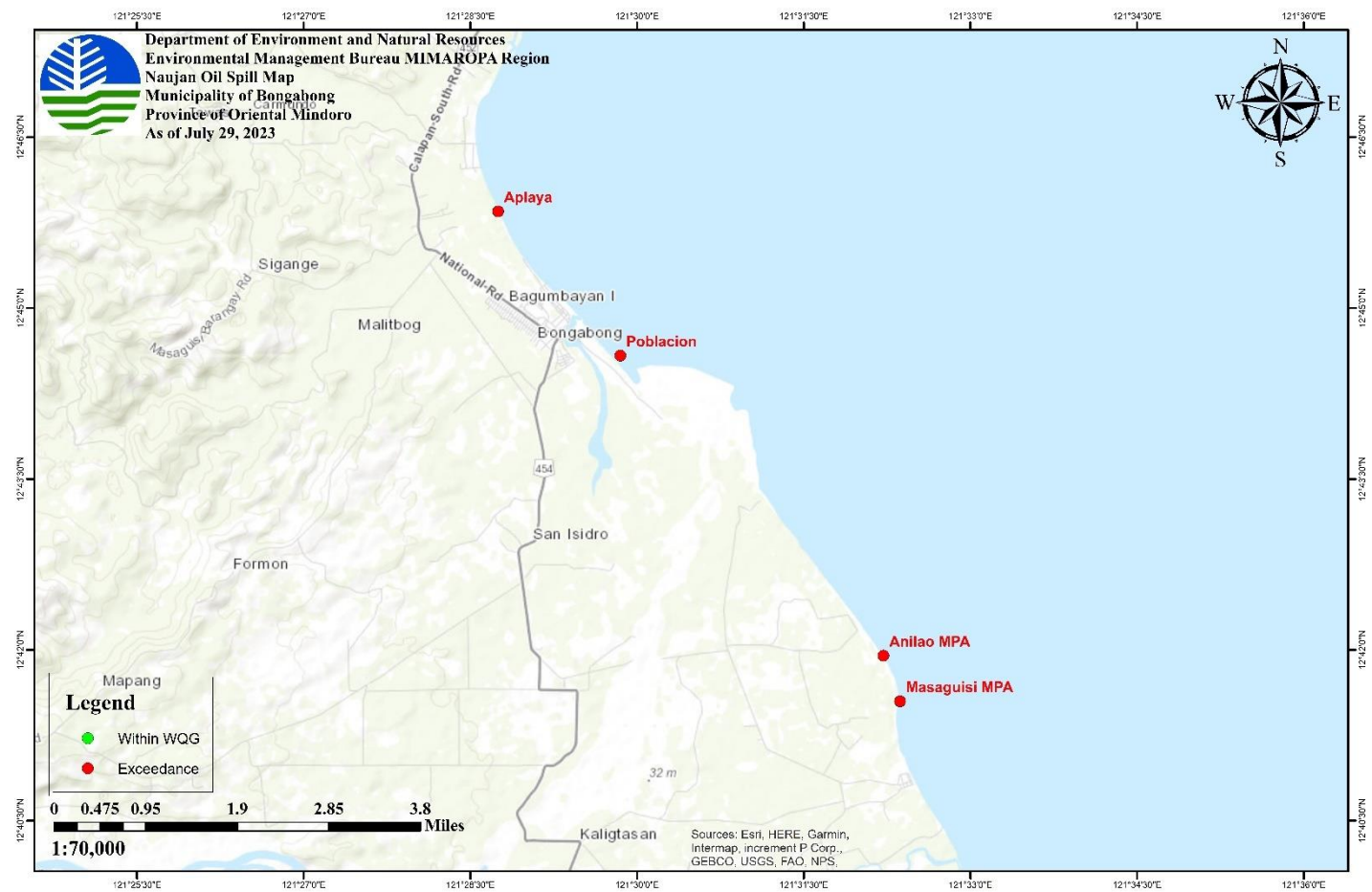
SAMPLING STATIONS AND RESULTS OF ANALYSIS – BANSUD, ORIENTAL MINDORO



SAMPLING STATIONS AND RESULTS OF ANALYSIS – BANSUD, ORIENTAL MINDORO (APRIL 26 TO JULY 29, 2023)

| Source | Station No. | Station Identification | Classification | WQG | Date of Sampling | | | | | |
|------------------------|-------------|-------------------------|----------------|--------|------------------|--------------|--------------|---------------|---------------|---------------|
| | | | | | April 26, 2023 | May 01, 2023 | June 3, 2023 | June 17, 2023 | June 29, 2023 | July 29, 2023 |
| Baco, Oriental Mindoro | 1 | Bansud Port Shoreline | Class SB | 2 mg/L | 3 mg/L | 2 mg/L | <1 mg/L | 9 mg/L | 4 mg/L | 5 mg/L |
| | 2 | Proper Bansud Shoreline | Class SB | 2 mg/L | 9 mg/L | 3 mg/L | <1 mg/L | 8 mg/L | 4 mg/L | 4 mg/L |

SAMPLING STATIONS AND RESULTS OF ANALYSIS – BONGABONG BAY, ORIENTAL MINDORO



SAMPLING STATIONS AND RESULTS OF ANALYSIS – BONGABONG, ORIENTAL MINDORO (MARCH 3 TO 10, 2023)

| Source | Station No. | Station Identification | Classification | Current Beneficial Usage | WQG | Date of Sampling | | | | | | | |
|--|-------------|------------------------|----------------|---|--------|------------------|---------------|---------------|---------------|---------------|---------------|---------------|----------------|
| | | | | | | March 3, 2023 | March 4, 2023 | March 5, 2023 | March 6, 2023 | March 7, 2023 | March 8, 2023 | March 9, 2023 | March 10, 2023 |
| Bongabong Bay, Bongabong, Oriental Mindoro | 1 | Aplaya | Class SB | swimming, fishing area, docking of boat | 2 mg/L | 5 mg/L | 10 mg/L | 3 mg/L | 3 mg/L | 8 mg/L | 1 mg/L | 12 mg/L | 12 mg/L |
| | 2 | Poblacion | Class SB | swimming, fishing area, | 2 mg/L | 4 mg/L | 6 mg/L | 2 mg/L | 3 mg/L | 9 mg/L | 2 mg/L | 7 mg/L | <1 mg/L |
| | 3 | Anilao MPA | Class SA | swimming, marine protected area | 1 mg/L | 6 mg/L | 11 mg/L | <1 mg/L | 19 mg/L | 12 mg/L | 5 mg/L | 3 mg/L | 2 mg/L |
| | 4 | Masaguisi MPA | Class SA | marine protected area, swimming | 1 mg/L | 3 mg/L | 16 mg/L | 3 mg/L | 4 mg/L | 7 mg/L | 9 mg/L | 12 mg/L | 14 mg/L |

SAMPLING STATIONS AND RESULTS OF ANALYSIS – BONGABONG, ORIENTAL MINDORO (MARCH 11 TO 21, 2023)

| Source | Station No. | Station Identification | Classification | Current Beneficial Usage | WQG | Date of Sampling | | | | | | | |
|--|-------------|------------------------|----------------|---|--------|------------------|----------------|----------------|----------------|----------------|----------------|----------------|----------------|
| | | | | | | March 11, 2023 | March 12, 2023 | March 13, 2023 | March 14, 2023 | March 15, 2023 | March 16, 2023 | March 19, 2023 | March 21, 2023 |
| Bongabong Bay, Bongabong, Oriental Mindoro | 1 | Aplaya | Class SB | swimming, fishing area, docking of boat | 2 mg/L | <1 mg/L | 24 mg/L | 9 mg/L | 4 mg/L | 7 mg/L | 24 mg/L | 1 mg/L | 3 mg/L |
| | 2 | Poblacion | Class SB | swimming, fishing area, | 2 mg/L | 3 mg/L | 3 mg/L | 2 mg/L | 7 mg/L | 1 mg/L | 31 mg/L | 5 mg/L | 12 mg/L |
| | 3 | Anilao MPA | Class SA | swimming, marine protected area | 1 mg/L | 9 mg/L | 2 mg/L | 6 mg/L | 5 mg/L | 28 mg/L | 14 mg/L | 6 mg/L | <1 mg/L |
| | 4 | Masaguisi MPA | Class SA | marine protected area, swimming | 1 mg/L | 5 mg/L | 9 mg/L | 3 mg/L | 7 mg/L | 7 mg/L | 11 mg/L | <1 mg/L | 2 mg/L |

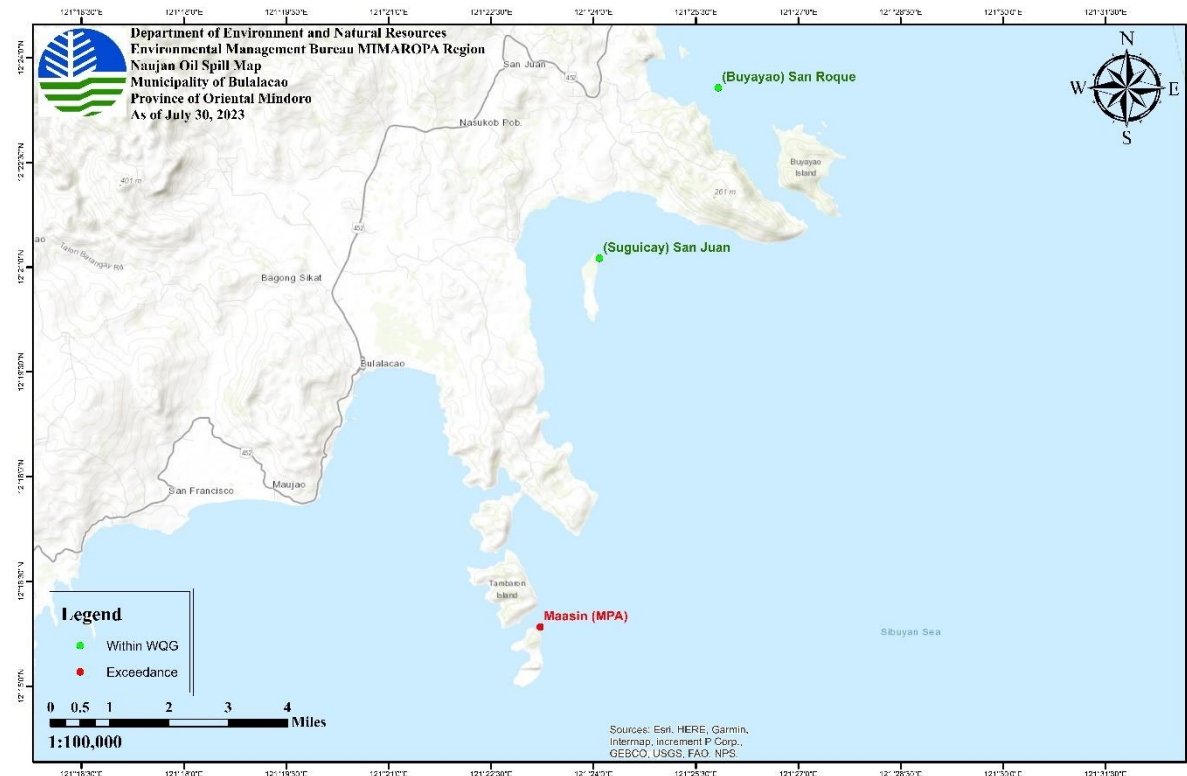
SAMPLING STATIONS AND RESULTS OF ANALYSIS – BONGABONG, ORIENTAL MINDORO (MARCH 23 TO JUNE 3, 2023)

| Source | Station No. | Station Identification | Classification | Current Beneficial Usage | WQG | Date of Sampling | | | | | | | |
|--|-------------|------------------------|----------------|---|--------|------------------|----------------|----------------|---------------|----------------|----------------|-------------|--------------|
| | | | | | | March 23, 2023 | March 25, 2023 | March 27, 2023 | April 4, 2023 | April 11, 2023 | April 17, 2023 | May 2, 2023 | June 3, 2023 |
| Bongabong Bay, Bongabong, Oriental Mindoro | 1 | Aplaya | Class SB | swimming, fishing area, docking of boat | 2 mg/L | 4 mg/L | <1 mg/L | 2 mg/L | <1 mg/L | 1 mg/L | 14 mg/L | 3 mg/L | <1 mg/L |
| | 2 | Poblacion | Class SB | swimming, fishing area, | 2 mg/L | 5 mg/L | 1 mg/L | 2 mg/L | 2 mg/L | <1 mg/L | 3 mg/L | 4 mg/L | <1 mg/L |
| | 3 | Anilao MPA | Class SA | swimming, marine protected area | 1 mg/L | 10 mg/L | 17 mg/L | 2 mg/L | <1 mg/L | 2 mg/L | 7 mg/L | 31 mg/L | <1 mg/L |
| | 4 | Masaguisi MPA | Class SA | marine protected area, swimming | 1 mg/L | 10 mg/L | <1 mg/L | 3 mg/L | 3 mg/L | <1 mg/L | 5 mg/L | 11 mg/L | <1 mg/L |

SAMPLING STATIONS AND RESULTS OF ANALYSIS – BONGABONG, ORIENTAL MINDORO (JUNE 17 TO JULY 29, 2023)

| Source | Station No. | Station Identification | Classification | Current Beneficial Usage | WQG | Date of Sampling | |
|--|-------------|------------------------|----------------|---|--------|------------------|---------------|
| | | | | | | June 17, 2023 | July 29, 2023 |
| Bongabong Bay, Bongabong, Oriental Mindoro | 1 | Aplaya | Class SB | swimming, fishing area, docking of boat | 2 mg/L | 11 mg/L | 3 mg/L |
| | 2 | Poblacion | Class SB | swimming, fishing area, | 2 mg/L | 3 mg/L | 5 mg/L |
| | 3 | Anilao MPA | Class SA | swimming, marine protected area | 1 mg/L | 5 mg/L | 5 mg/L |
| | 4 | Masaguisi MPA | Class SA | marine protected area, swimming | 1 mg/L | <1 mg/L | 7 mg/L |

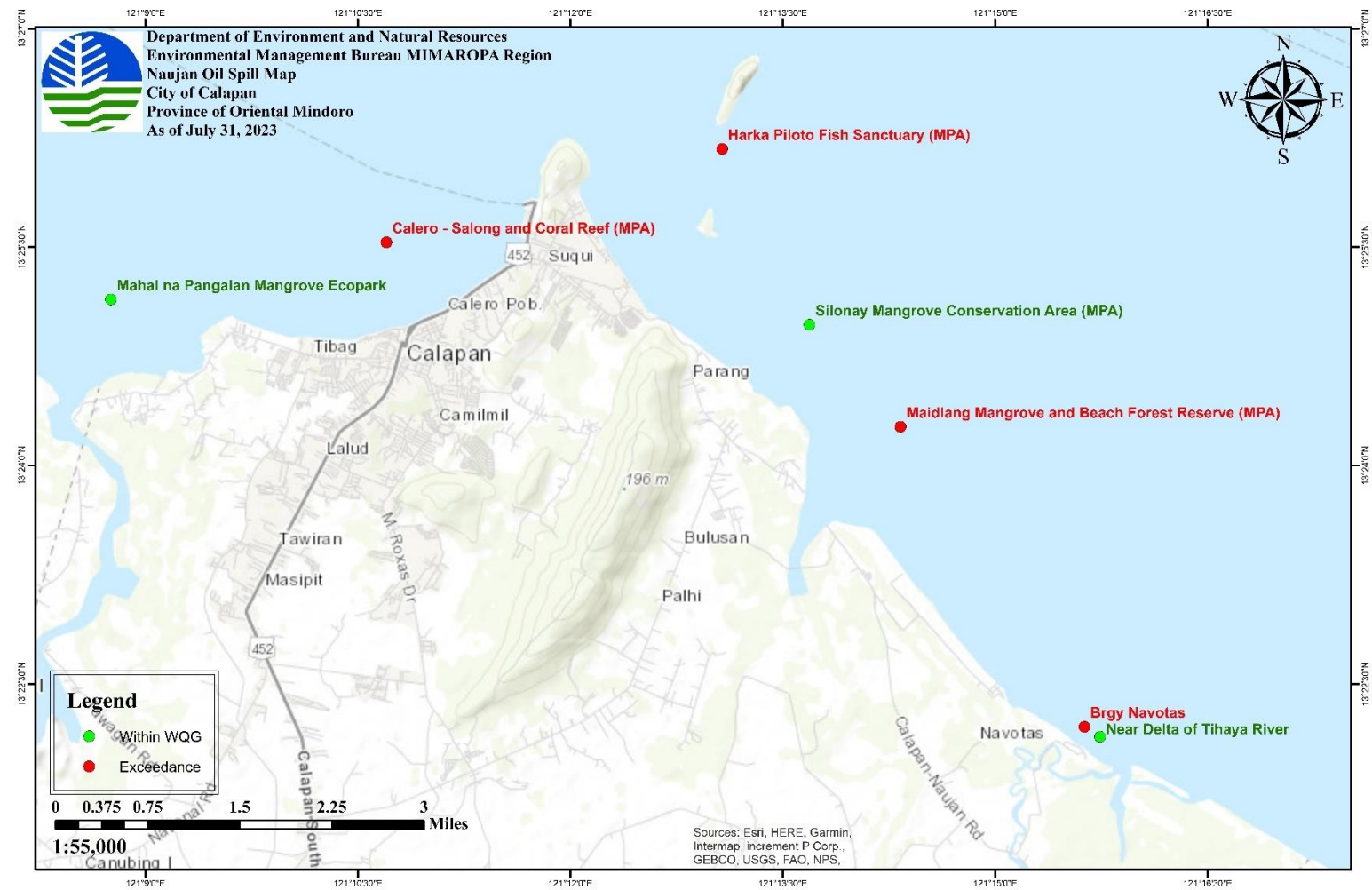
SAMPLING STATIONS AND RESULTS OF ANALYSIS – BULALACAO, ORIENTAL MINDORO



SAMPLING STATIONS AND RESULTS OF ANALYSIS – BULALACAO, ORIENTAL MINDORO (MARCH 29 TO JULY 30, 2023)

| Source | Station No. | Station Identification | Classification | Current Beneficial Usage | WQG | Date of Sampling | | | | | | |
|-----------------------------|-------------|------------------------|----------------|--------------------------|--------|------------------|----------------|----------------|-------------|--------------|---------------|---------------|
| | | | | | | March 29, 2023 | April 17, 2023 | April 26, 2023 | May 2, 2023 | June 5, 2023 | June 19, 2023 | July 30, 2023 |
| Bulalacao, Oriental Mindoro | 1 | Maasin (MPA) | Class SA | - | 1 mg/L | 4 mg/L | 26 mg/L | 4 mg/L | 3 mg/L | 48 mg/L | 3 mg/L | 3 mg/L |
| | 2 | (Suguihay) San Juan | Class SB | - | 2 mg/L | 18 mg/L | 5 mg/L | 2 mg/L | <1 mg/L | <1 mg/L | 29 mg/L | <1 mg/L |
| | 3 | (Buyayao) San Roque | Class SB | - | 2 mg/L | 8 mg/L | 4 mg/L | 3 mg/L | 1 mg/L | 20 mg/L | 1 mg/L | 2 mg/L |

SAMPLING STATIONS AND RESULTS OF ANALYSIS – CALAPAN CITY, ORIENTAL MINDORO



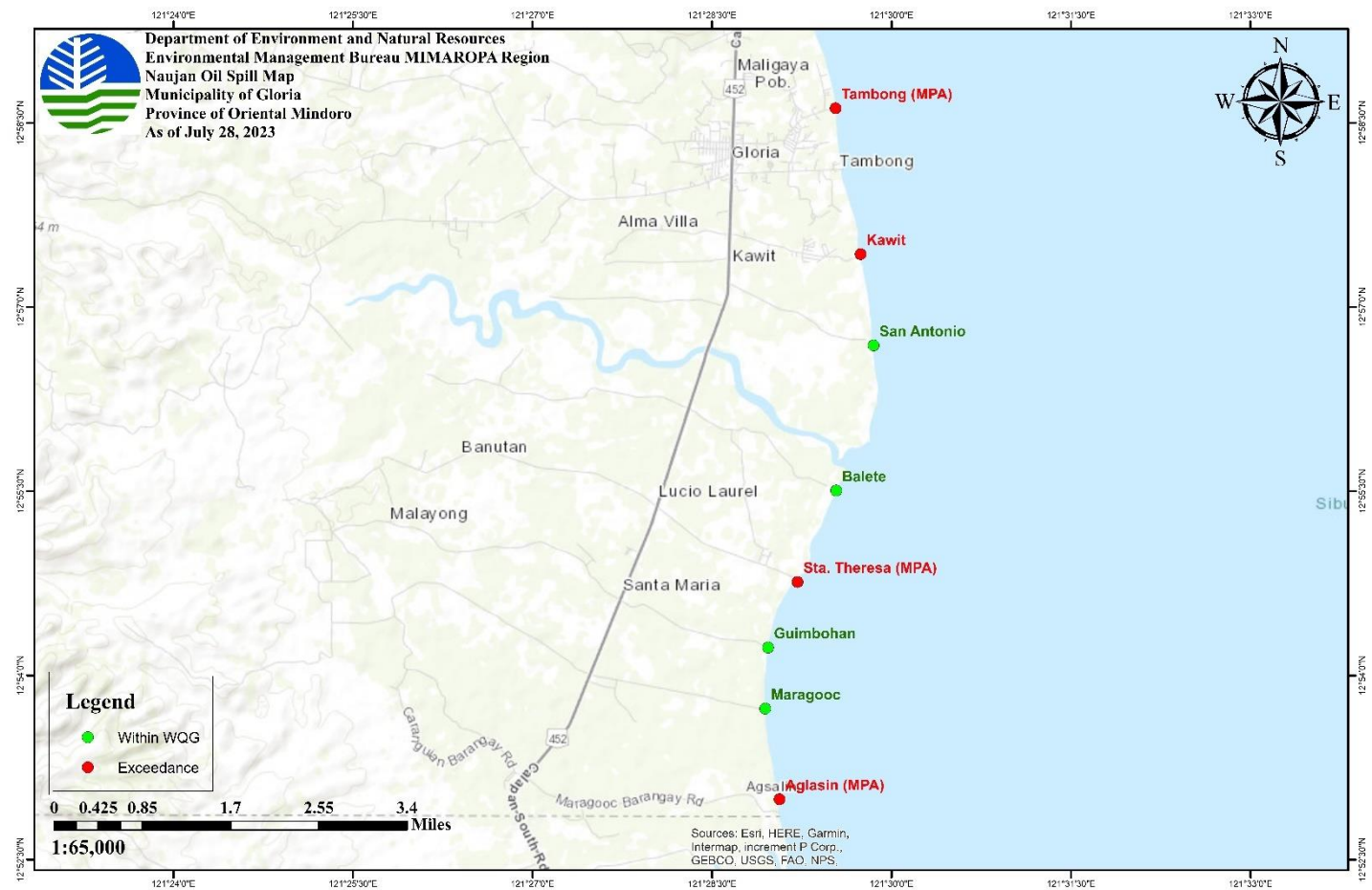
SAMPLING STATIONS AND RESULTS OF ANALYSIS – CALAPAN CITY, ORIENTAL MINDORO (MARCH 16 TO APRIL 2, 2023)

| Source | Station No. | Station Identification | Classification | Current Beneficial Usage | WQG | Date of Sampling | | | | | | | | |
|--------------------------------|-------------|--|----------------|--------------------------|--------|------------------|----------------|----------------|----------------|----------------|----------------|----------------|----------------|---------------|
| | | | | | | March 16, 2023 | March 19, 2023 | March 20, 2023 | March 21, 2023 | March 22, 2023 | March 23, 2023 | March 24, 2023 | March 25, 2023 | April 2, 2023 |
| Calapan City, Oriental Mindoro | 1 | Maidlang Mangrove and Beach Forest Reserve (MPA) | Class SC | Mangrove | 3 mg/L | 3 mg/L | - | - | 2 mg/L | 28 mg/L | 5 mg/L | 3 mg/L | 6 mg/L | 2 mg/L |
| | 2 | Silonay Mangrove Conservation Area (MPA) | Class SC | Mangrove | 3 mg/L | 19 mg/L | - | - | 2 mg/L | 11 mg/L | 6 mg/L | 2 mg/L | 2 mg/L | <1 mg/L |
| | 3 | Harka Piloto Fish Sanctuary (MPA) | Class SA | Fish sanctuary | 1 mg/L | 15 mg/L | - | - | 2 mg/L | 6 mg/L | 1 mg/L | 4 mg/L | 5 mg/L | <1 mg/L |
| | 4 | Calero - Salong and Coral Reef (MPA) | Class SA | Reef | 1 mg/L | 2 mg/L | 3 mg/L | 31 mg/L | 3 mg/L | 14 mg/L | <1 mg/L | 5 mg/L | 3 mg/L | 5 mg/L |
| | 5 | Mahal na Pangalan Mangrove Ecopark | Class SC | Mangrove | 3 mg/L | 11 mg/L | <1 mg/L | 2 mg/L | <1 mg/L | 13 mg/L | 4 mg/L | 2 mg/L | 7 mg/L | <1 mg/L |
| | 6 | Brgy Navotas | Class SB | Public beach area | 2 mg/L | 1 mg/L | <1 mg/L | 8 mg/L | 14 mg/L | 43 mg/L | <1 mg/L | 3 mg/L | 4 mg/L | 2 mg/L |
| | 7 | Near Delta of Tihaya River | Class SC | River delta | 3 mg/L | <1 mg/L | - | - | 3 mg/L | 9 mg/L | 2 mg/L | 5 mg/L | 1 mg/L | <1 mg/L |
| | 8 | Suqui | Class SB | | 2 mg/L | - | 3 mg/L | 15 mg/L | - | - | - | - | - | |

SAMPLING STATIONS AND RESULTS OF ANALYSIS – CALAPAN CITY, ORIENTAL MINDORO (APRIL 19 TO JULY 31, 2023)

| Source | Station No. | Station Identification | Classification | Current Beneficial Usage | WQG | Date of Sampling | | | | | |
|--------------------------------|-------------|--|----------------|--------------------------|--------|------------------|--------------|---------------|---------------|---------------|---------------|
| | | | | | | April 19, 2023 | May 09, 2023 | June 14, 2023 | June 29, 2023 | July 18, 2023 | July 31, 2023 |
| Calapan City, Oriental Mindoro | 1 | Maidlang Mangrove and Beach Forest Reserve (MPA) | Class SC | Mangrove | 3 mg/L | <1 mg/L | 3 mg/L | 5 mg/L | 11 mg/L | 6 mg/L | 4 mg/L |
| | 2 | Silonay Mangrove Conservation Area (MPA) | Class SC | Mangrove | 3 mg/L | 2 mg/L | <1 mg/L | 13 mg/L | 54 mg/L | 4 mg/L | 2 mg/L |
| | 3 | Harka Piloto Fish Sanctuary (MPA) | Class SA | Fish sanctuary | 1 mg/L | 4 mg/L | <1 mg/L | 13 mg/L | 9 mg/L | 1 mg/L | 3 mg/L |
| | 4 | Calero - Salong and Coral Reef (MPA) | Class SA | Reef | 1 mg/L | 2 mg/L | 1 mg/L | 4 mg/L | 6 mg/L | <1 mg/L | 3 mg/L |
| | 5 | Mahal na Pangalan Mangrove Ecopark | Class SC | Mangrove | 3 mg/L | <1 mg/L | 2 mg/L | 4 mg/L | 27 mg/L | 2 mg/L | 3 mg/L |
| | 6 | Brgy Navotas | Class SB | Public beach area | 2 mg/L | <1 mg/L | 2 mg/L | <1 mg/L | 3 mg/L | 4 mg/L | 3 mg/L |
| | 7 | Near Delta of Tihaya River | Class SC | River delta | 3 mg/L | <1 mg/L | 5 mg/L | 3 mg/L | 35 mg/L | 1 mg/L | 3 mg/L |

SAMPLING STATIONS AND RESULTS OF ANALYSIS – GLORIA, ORIENTAL MINDORO



SAMPLING STATIONS AND RESULTS OF ANALYSIS – GLORIA, ORIENTAL MINDORO (MARCH 07 TO 15, 2023)

| Source | Station No. | Station Identification | Classification | Current Beneficial Usage | WQG | Date of Sampling | | | | | | | | |
|--|-------------|------------------------|----------------|--|--------|------------------|---------------|---------------|----------------|----------------|----------------|----------------|----------------|----------------|
| | | | | | | March 7, 2023 | March 8, 2023 | March 9, 2023 | March 10, 2023 | March 11, 2023 | March 12, 2023 | March 13, 2023 | March 14, 2023 | March 15, 2023 |
| Gloria (Coastal Waters), Oriental Mindoro | 1 | Aglasin (MPA) | Class SB | Marine protected area, swimming | 2 mg/L | <1 mg/L | 9 mg/L | 2 mg/L | 19 mg/L | <1 mg/L | 51 mg/L | 2 mg/L | 8 mg/L | <1 mg/L |
| | 2 | Maragooc | Class SB | Swimming, fishing | 2 mg/L | 5 mg/L | 2 mg/L | 3 mg/L | 44 mg/L | 1 mg/L | 38 mg/L | 46 mg/L | 6 mg/L | 4 mg/L |
| | 3 | Guimbohan | Class SB | Swimming, fishing | 2 mg/L | <1 mg/L | 1 mg/L | 2 mg/L | 12 mg/L | 1 mg/L | <1 mg/L | 35 mg/L | 6 mg/L | 2 mg/L |
| | 4 | Sta. Theresa (MPA) | Class SA | Marine protected area, swimming, fishing | 1 mg/L | 15 mg/L | 1 mg/L | 6 mg/L | 45 mg/L | 4 mg/L | 3 mg/L | 6 mg/L | 15 mg/L | 4 mg/L |
| | 5 | Balete | Class SC | With mangrove area, swimming, fishing | 3 mg/L | 10 mg/L | 4 mg/L | 1 mg/L | 5 mg/L | 5 mg/L | 3 mg/L | 102 mg/L | 29 mg/L | 25 mg/L |
| | 6 | San Antonio | Class SB | Swimming, fishing | 2 mg/L | 12 mg/L | 10 mg/L | 2 mg/L | 3 mg/L | - | <1 mg/L | 27 mg/L | 1 mg/L | 6 mg/L |
| | 7 | Kawit | Class SB | Swimming, fishing | 2 mg/L | 13 mg/L | 6 mg/L | <1 mg/L | 8 mg/L | 3 mg/L | <1 mg/L | 23 mg/L | 13 mg/L | <1 mg/L |
| | 8 | Tambong | Class SA | Marine protected area, swimming, fishing | 1 mg/L | 13 mg/L | 3 mg/L | 2 mg/L | 2 mg/L | 20 mg/L | 10 mg/L | 19 mg/L | 1 mg/L | 3 mg/L |

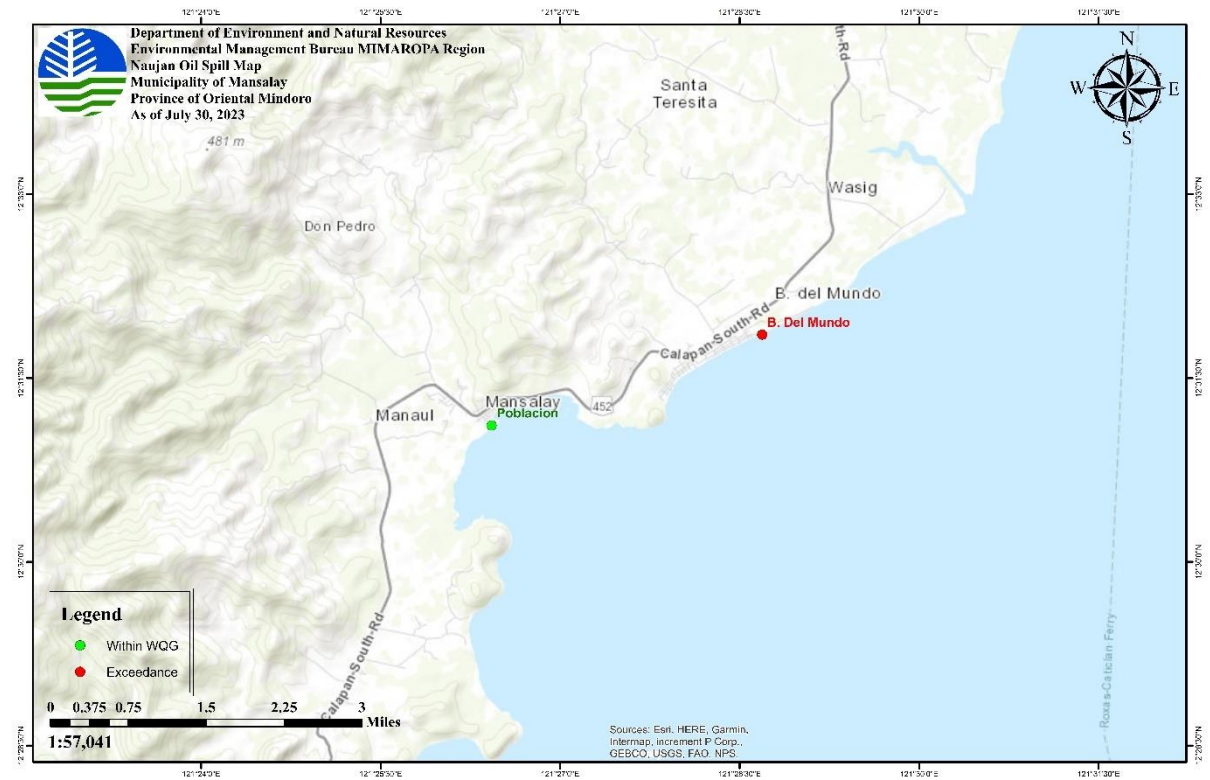
SAMPLING STATIONS AND RESULTS OF ANALYSIS – GLORIA, ORIENTAL MINDORO (MARCH 16 TO APRIL 16, 2023)

| Source | Station No. | Station Identification | Classification | Current Beneficial Usage | WQG | Date of Sampling | | | | | | | | |
|---|-------------|------------------------|----------------|--|--------|------------------|----------------|----------------|----------------|----------------|----------------|----------------|----------------|----------------|
| | | | | | | March 16, 2023 | March 17, 2023 | March 18, 2023 | March 19, 2023 | March 21, 2023 | March 23, 2023 | March 25, 2023 | March 27, 2023 | April 16, 2023 |
| Gloria (Coastal Waters), Oriental Mindoro | 1 | Aglasin (MPA) | Class SB | Marine protected area, swimming | 2 mg/L | 2 mg/L | 3 mg/L | 7 mg/L | <1 mg/L | 2 mg/L | 5 mg/L | 9 mg/L | 23 mg/L | 5 mg/L |
| | 2 | Maragooc | Class SB | Swimming, fishing | 2 mg/L | 23 mg/L | 1 mg/L | 1 mg/L | <1 mg/L | 4 mg/L | 9 mg/L | 9 mg/L | 2 mg/L | 8 mg/L |
| | 3 | Guimbohan | Class SB | Swimming, fishing | 2 mg/L | 2 mg/L | 4 mg/L | <1 mg/L | <1 mg/L | 4 mg/L | 7 mg/L | 7 mg/L | 1 mg/L | 6 mg/L |
| | 4 | Sta. Theresa (MPA) | Class SA | Marine protected area, swimming, fishing | 1 mg/L | 1 mg/L | 4 mg/L | 6 mg/L | 1 mg/L | 7 mg/L | 9 mg/L | 7 mg/L | 3 mg/L | 6 mg/L |
| | 5 | Balete | Class SC | With mangrove area, swimming, fishing | 3 mg/L | 3,499 mg/L | 2 mg/L | 8 mg/L | 4 mg/L | 6 mg/L | 7 mg/L | 7 mg/L | 3 mg/L | 4 mg/L |
| | 6 | San Antonio | Class SB | Swimming, fishing | 2 mg/L | 5 mg/L | 5 mg/L | <1 mg/L | <1 mg/L | 8 mg/L | <1 mg/L | 5 mg/L | 5 mg/L | 3 mg/L |
| | 7 | Kawit | Class SB | Swimming, fishing | 2 mg/L | 13 mg/L | 4 mg/L | 20 mg/L | 10 mg/L | 4 mg/L | <1 mg/L | 6 mg/L | 3 mg/L | 31 mg/L |
| | 8 | Tambong | Class SA | Marine protected area, swimming, fishing | 1 mg/L | 2 mg/L | 5 mg/L | <1 mg/L | 2 mg/L | 13 mg/L | 1 mg/L | 2 mg/L | 5 mg/L | 4 mg/L |

SAMPLING STATIONS AND RESULTS OF ANALYSIS – GLORIA, ORIENTAL MINDORO (MAY 03 TO JULY 28, 2023)

| Source | Station No. | Station Identification | Classification | Current Beneficial Usage | WQG | Date of Sampling | | | |
|---|-------------|------------------------|----------------|--|--------|------------------|--------------|---------------|---------------|
| | | | | | | May 03, 2023 | June 9, 2023 | July 14, 2023 | July 28, 2023 |
| Gloria (Coastal Waters), Oriental Mindoro | 1 | Aglasin (MPA) | Class SB | Marine protected area, swimming | 1 mg/L | 8 mg/L | 7 mg/L | 2 mg/L | 2 mg/L |
| | 2 | Maragooc | Class SB | Swimming, fishing | 2 mg/L | <1 mg/L | 9 mg/L | 4 mg/L | 1 mg/L |
| | 3 | Guimbohan | Class SB | Swimming, fishing | 2 mg/L | 2 mg/L | 78 mg/L | 6 mg/L | 2 mg/L |
| | 4 | Sta. Theresa (MPA) | Class SA | Marine protected area, swimming, fishing | 1 mg/L | 2 mg/L | 7 mg/L | <1 mg/L | 4 mg/L |
| | 5 | Balete | Class SC | With mangrove area, swimming, fishing | 3 mg/L | <1 mg/L | 22 mg/L | 3 mg/L | 3 mg/L |
| | 6 | San Antonio | Class SB | Swimming, fishing | 2 mg/L | <1 mg/L | 4 mg/L | 3 mg/L | <1 mg/L |
| | 7 | Kawit | Class SB | Swimming, fishing | 2 mg/L | 6 mg/L | 4 mg/L | 4 mg/L | 4 mg/L |
| | 8 | Tambong | Class SA | Marine protected area, swimming, fishing | 1 mg/L | <1 mg/L | 2 mg/L | 2 mg/L | 3 mg/L |

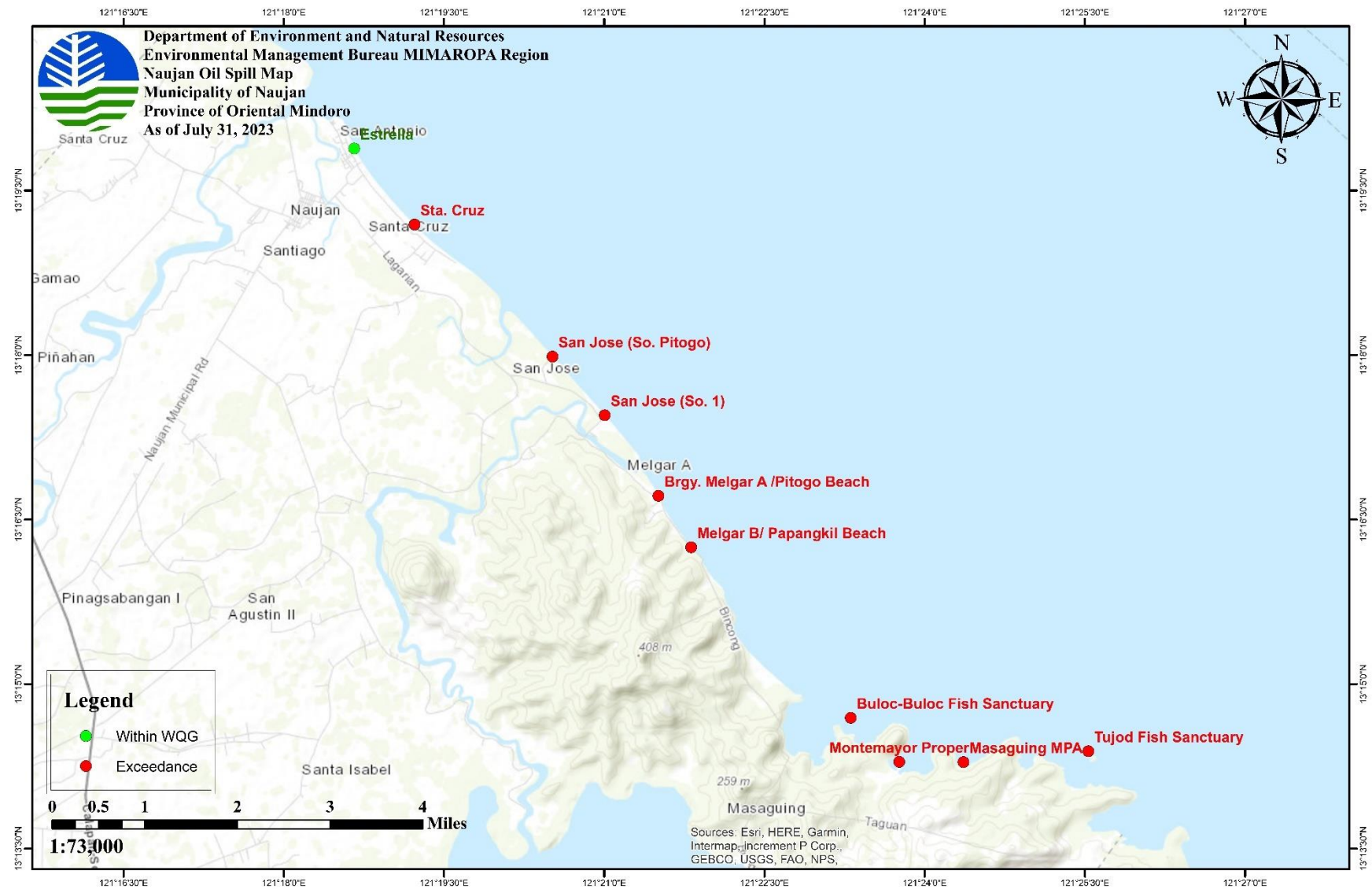
SAMPLING STATIONS AND RESULTS OF ANALYSIS – MANSALAY, ORIENTAL MINDORO



SAMPLING STATIONS AND RESULTS OF ANALYSIS – MANSALAY, ORIENTAL MINDORO (MARCH 29 TO JULY 30, 2023)

| Source | Station No. | Station Identification | Classification | Current Beneficial Usage | WQG | Date of Sampling | | | | | | |
|----------------------------|-------------|------------------------|----------------|--------------------------|--------|------------------|----------------|----------------|--------------|--------------|---------------|---------------|
| | | | | | | March 29, 2023 | April 17, 2023 | April 26, 2023 | May 02, 2023 | June 5, 2023 | June 18, 2023 | July 30, 2023 |
| Mansalay, Oriental Mindoro | 1 | B. Del Mundo | Class SB | - | 2 mg/L | 14 mg/L | 5 mg/L | 2 mg/L | 5 mg/L | <1 mg/L | 5 mg/L | 3 mg/L |
| | 2 | Poblacion | Class SB | - | 2 mg/L | 4 mg/L | 6 mg/L | <1 mg/L | 50 mg/L | <1 mg/L | 5 mg/L | 2 mg/L |

SAMPLING STATIONS AND RESULTS OF ANALYSIS – NAUJAN, ORIENTAL MINDORO



SAMPLING STATIONS AND RESULTS OF ANALYSIS – NAUJAN, ORIENTAL MINDORO (MARCH 1 – 10, 2023)

| Source | Station No. | Station Identification | Classification | Current Beneficial Usage | WQG | Date of Sampling | | | | | | | | | |
|-------------------------|-------------|------------------------------|----------------|---|--------|------------------|--|---------------|---------------|---------------|---------------|---------------|---------------|---------------|----------------|
| | | | | | | March 1, 2023 | March 2, 2023 | March 3, 2023 | March 4, 2023 | March 5, 2023 | March 6, 2023 | March 7, 2023 | March 8, 2023 | March 9, 2023 | March 10, 2023 |
| Naujan Municipal Waters | 1 | Estrella | Class SB | Swimming, fishing, tourist area, docking of boat, residential area (20-30 meters away from the beach) | 2 mg/L | 2 mg/L | 5 mg/L | 3 mg/L | 8 mg/L | 3 mg/L | <1 mg/L | 16 mg/L | 2 mg/L | 1 mg/L | 2 mg/L |
| | 2 | Sta. Cruz | Class SC | Fishing, docking of boat, swimming | 3 mg/L | 13 mg/L | 5 mg/L | 3 mg/L | 13 mg/L | <1 mg/L | 3 mg/L | 9 mg/L | 2 mg/L | <1 mg/L | 3 mg/L |
| | 3 | San Jose (Sitio Pitogo) | Class SB | Swimming, presence of beach resort, tourist area | 2 mg/L | <1 mg/L | 4 mg/L | 49 mg/L | 9 mg/L | 16 mg/L | 1 mg/L | 30 mg/L | 4 mg/L | 7 mg/L | 3 mg/L |
| | 4 | San Jose (Sitio 1) | Class SC | Docking, fishing, swimming with residential area | 3 mg/L | 11 mg/L | 5 mg/L | 8 mg/L | 12 mg/L | 10 mg/L | 3 mg/L | 31 mg/L | 15 mg/L | 11 mg/L | 34 mg/L |
| | 5 | Antipolo/San Jose Proper | Class SC | Swimming, docking of boat, fishing, residential area | 3 mg/L | 21 mg/L | NO SAMPLING WAS CONDUCTED PER ADVICE OF MDRRMO/PCG/BANTAY DAGAT AND FISHERY MANAGEMENT UNIT DUE TO BAD WEATHER | | | | | | | | - |
| | 6 | Brgy. Melgar A/ Pitogo Beach | Class SB | Swimming with residential area | 2 mg/L | 7 mg/L | 8 mg/L | 3 mg/L | 15 mg/L | 2 mg/L | 5 mg/L | 8 mg/L | 19 mg/L | 10 mg/L | 32 mg/L |
| | 7 | Melgar B/ Papangkil Beach | Class SC | Swimming, fishing area, with residential area | 3 mg/L | 9 mg/L | 5 mg/L | 6 mg/L | 11mg/L | <1 mg/L | 9 mg/L | 11 mg/L | 22 mg/L | 3 mg/L | 9 mg/L |

| | | | | | | | | |
|--|----|----------------------------|----------|------------------------------|--------|---------|--|---|
| | 8 | Buloc-Buloc Fish Sanctuary | Class SA | Tourist area, fish sanctuary | 1 mg/L | <1 mg/L | NO SAMPLING WAS CONDUCTED PER ADVICE OF MDRRMO/PCG/BANTAY DAGAT AND FISHERY MANAGEMENT UNIT DUE TO BAD WEATHER | - |
| | 9 | Montemayor Proper | Class SA | Swimming, fishing | 2 mg/L | 2 mg/L | | - |
| | 10 | Masaguig | Class SA | Swimming, fishing | 1 mg/L | <1 mg/L | | - |
| | 11 | Tujod Fish Sanctuary | Class SA | Fish sanctuary | 1 mg/L | 15 mg/L | | - |

SAMPLING STATIONS AND RESULTS OF ANALYSIS – NAUJAN, ORIENTAL MINDORO (MARCH 11 TO 17, 2023)

| Source | Station No. | Station Identification | Classification | Current Beneficial Usage | WQG | Date of Sampling | | | | | | |
|-------------------------|-------------|------------------------------|----------------|---|--------|--|----------------|----------------|----------------|----------------|----------------|----------------|
| | | | | | | March 11, 2023 | March 12, 2023 | March 13, 2023 | March 14, 2023 | March 15, 2023 | March 16, 2023 | March 17, 2023 |
| Naujan Municipal Waters | 1 | Estrella | Class SB | Swimming, fishing, tourist area, docking of boat, residential area (20-30 meters away from the beach) | 2 mg/L | 30 mg/L | 9 mg/L | 7 mg/L | 7 mg/L | 14 mg/L | <1 mg/L | 5 mg/L |
| | 2 | Sta. Cruz | Class SC | Fishing, docking of boat, swimming | 3 mg/L | 1 mg/L | 18 mg/L | 2 mg/L | 10 mg/L | 4 mg/L | 4 mg/L | <1 mg/L |
| | 3 | San Jose (Sitio Pitogo) | Class SB | Swimming, presence of beach resort, tourist area | 2 mg/L | 19 mg/L | 5 mg/L | 4 mg/L | 10 mg/L | 9 mg/L | 4 mg/L | 4 mg/L |
| | 4 | San Jose (Sitio 1) | Class SC | Docking, fishing, swimming with residential area | 3 mg/L | 6 mg/L | 8 mg/L | 14 mg/L | 10 mg/L | 6 mg/L | 21 mg/L | 8 mg/L |
| | 5 | Antipolo/San Jose Proper | Class SB | Swimming, docking of boat, fishing, residential area | 2 mg/L | NO SAMPLING WAS CONDUCTED PER ADVICE OF MDRRMO/PCG/BANTAY DAGAT AND FISHERY MANAGEMENT UNIT DUE TO BAD WEATHER | - | - | - | - | - | - |
| | 6 | Brgy. Melgar A/ Pitogo Beach | Class SB | Swimming with residential area | 2 mg/L | <1 mg/L | 11 mg/L | 1 mg/L | 55 mg/L | 6 mg/L | <1 mg/L | 10 mg/L |
| | 7 | Melgar B/ Papangkil Beach | Class SA | Swimming, fishing area, with residential area | 1 mg/L | <1 mg/L | 12 mg/L | 8 mg/L | 23 mg/L | 10 mg/L | 3 mg/L | 4 mg/L |

| | | | | | | |
|--|----|----------------------------|----------|------------------------------|--------|--|
| | 8 | Buloc-Buloc Fish Sanctuary | Class SB | Tourist area, fish sanctuary | 2 mg/L | NO SAMPLING WAS CONDUCTED PER ADVICE OF MDRRMO/PCG/BANTAY DAGAT AND FISHERY MANAGEMENT UNIT DUE TO BAD WEATHER |
| | 9 | Montemayor Proper | Class SA | Swimming, fishing | 1 mg/L | |
| | 10 | Masaguig | Class SA | Swimming, fishing | 1 mg/L | |
| | 11 | Tujod Fish Sanctuary | Class SB | Fish sanctuary | 2 mg/L | |

SAMPLING STATIONS AND RESULTS OF ANALYSIS – NAUJAN, ORIENTAL MINDORO (MARCH 19 TO APRIL 20, 2023)

| Source | Station No. | Station Identification | Classification | Current Beneficial Usage | WQG | Date of Sampling | | | | | | | | |
|-------------------------|-------------|------------------------------|----------------|---|--------|------------------|----------------|----------------|----------------|----------------|---------------|---------------|----------------|----------------|
| | | | | | | March 19, 2023 | March 21, 2023 | March 23, 2023 | March 25, 2023 | March 27, 2023 | April 2, 2023 | April 5, 2023 | April 13, 2023 | April 20, 2023 |
| Naujan Municipal Waters | 1 | Estrella | Class SB | Swimming, fishing, tourist area, docking of boat, residential area (20-30 meters away from the beach) | 2 mg/L | 6 mg/L | 1 mg/L | <1 mg/L | 2 mg/L | 14 mg/L | 6 mg/L | <1 mg/L | 3 mg/L | 7 mg/L |
| | 2 | Sta. Cruz | Class SC | Fishing, docking of boat, swimming | 3 mg/L | 10 mg/L | 4 mg/L | 1 mg/L | 5 mg/L | - | 2 mg/L | <1 mg/L | 15 mg/L | 50 mg/L |
| | 3 | San Jose (Sitio Pitogo) | Class SB | Swimming, presence of beach resort, tourist area | 2 mg/L | 6 mg/L | - | 6 mg/L | 7 mg/L | 5 mg/L | 4 mg/L | 3 mg/L | 5 mg/L | 21 mg/L |
| | 4 | San Jose (Sitio 1) | Class SC | Docking, fishing, swimming with residential area | 3 mg/L | 5 mg/L | 8 mg/L | 5 mg/L | 14 mg/L | 10 mg/L | 3 mg/L | <1 mg/L | 3 mg/L | 16 mg/L |
| | 5 | Brgy. Melgar A/ Pitogo Beach | Class SB | Swimming with residential area | 2 mg/L | 3 mg/L | 15 mg/L | <1 mg/L | 3 mg/L | 5 mg/L | 4 mg/L | 1 mg/L | 5 mg/L | 4 mg/L |
| | 6 | Melgar B/ Papangkil Beach | Class SB | Swimming, fishing area, with residential area | 2 mg/L | 10 mg/L | 4 mg/L | 2 mg/L | 32 mg/L | 6 mg/L | 2 mg/L | 1 mg/L | 9 mg/L | 3 mg/L |
| | 7 | Buloc-Buloc Fish Sanctuary | Class SA | Tourist area, fish sanctuary | 1 mg/L | 11 mg/L | 11 mg/L | 5 mg/L | 5 mg/L | 2 mg/L | 4 mg/L | <1 mg/L | 3 mg/L | 1 mg/L |
| | 8 | Montemayor Proper | Class SB | Swimming, fishing | 2 mg/L | 2 mg/L | 4 mg/L | 11 mg/L | 13 mg/L | 5 mg/L | 5 mg/L | <1 mg/L | <1 mg/L | 2 mg/L |
| | 9 | Masaguig | Class SA | Swimming, fishing | 1 mg/L | 5 mg/L | 3 mg/L | <1 mg/L | 5 mg/L | 10 mg/L | 4 mg/L | <1 mg/L | 3 mg/L | 17 mg/L |
| | 10 | Tujod Fish Sanctuary | Class SA | Fish sanctuary | 1 mg/L | <1 mg/L | 5 mg/L | 4 mg/L | 26 mg/L | 11 mg/L | 7 mg/L | <1 mg/L | 7 mg/L | 51 mg/L |

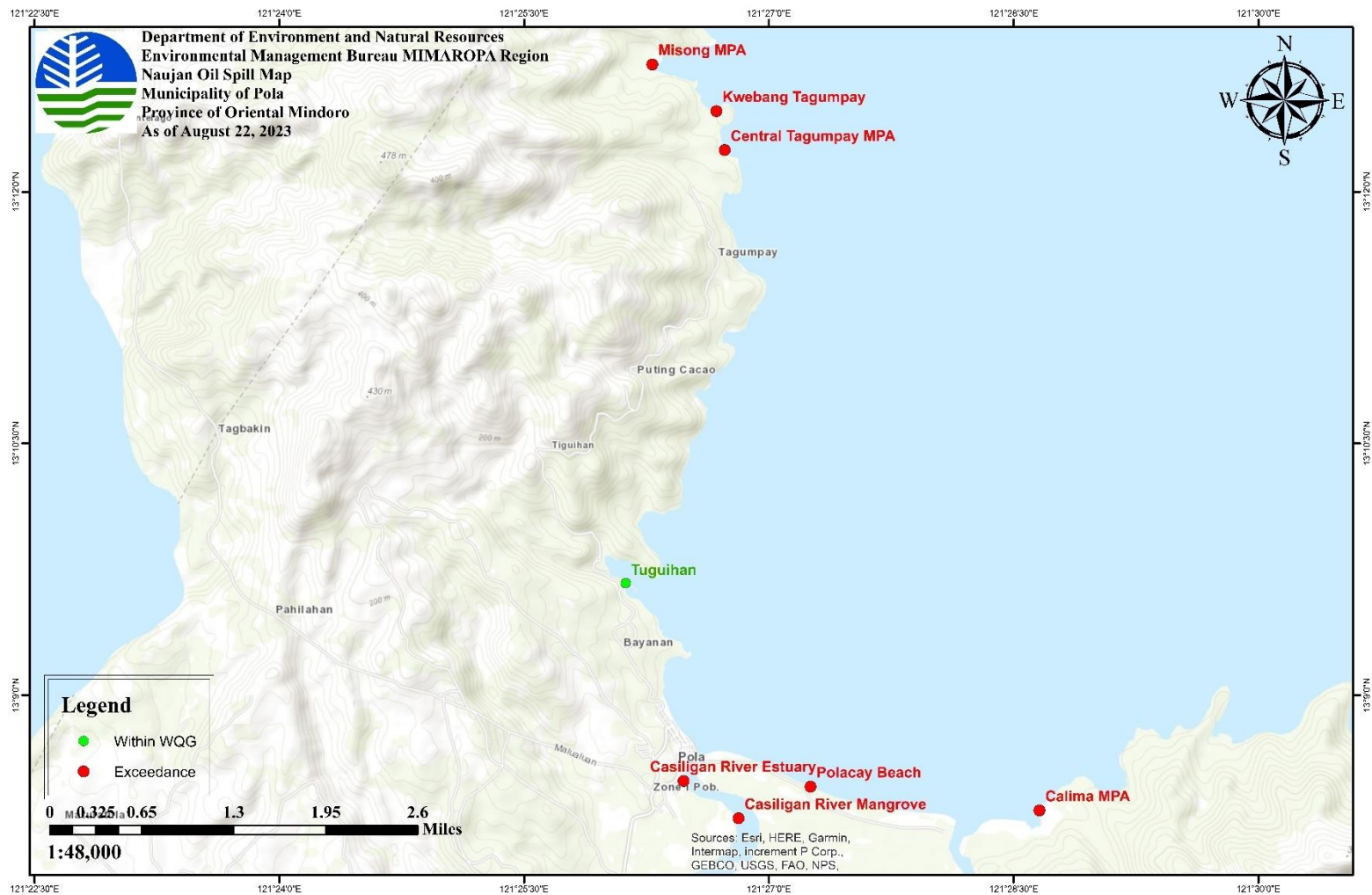
SAMPLING STATIONS AND RESULTS OF ANALYSIS – NAUJAN, ORIENTAL MINDORO (MAY 09 to JULY 31, 2023)

| Source | Station No. | Station Identification | Classification | Current Beneficial Usage | WQG | Date of Sampling | | | | | |
|-------------------------|-------------|------------------------------|----------------|---|--------|------------------|--------------|---------------|---------------|---------------|---------------|
| | | | | | | May 09, 2023 | June 7, 2023 | June 21, 2023 | June 27, 2023 | July 13, 2023 | July 31, 2023 |
| Naujan Municipal Waters | 1 | Estrella | Class SB | Swimming, fishing, tourist area, docking of boat, residential area (20-30 meters away from the beach) | 2 mg/L | 4 mg/L | 6 mg/L | <1 mg/L | <1 mg/L | 4 mg/L | 2 mg/L |
| | 2 | Sta. Cruz | Class SC | Fishing, docking of boat, swimming | 3 mg/L | 2 mg/L | 6 mg/L | 3 mg/L | 3 mg/L | 5 mg/L | 6 mg/L |
| | 3 | San Jose (Sitio Pitogo) | Class SB | Swimming, presence of beach resort, tourist area | 2 mg/L | 2 mg/L | 5 mg/L | 15 mg/L | <1 mg/L | 5 mg/L | 3 mg/L |
| | 4 | San Jose (Sitio 1) | Class SC | Docking, fishing, swimming with residential area | 3 mg/L | 2 mg/L | 3 mg/L | 11 mg/L | 19 mg/L | 3 mg/L | 8 mg/L |
| | 5 | Brgy. Melgar A/ Pitogo Beach | Class SB | Swimming with residential area | 2 mg/L | 1 mg/L | 4 mg/L | 4 mg/L | 5 mg/L | <1 mg/L | 6 mg/L |
| | 6 | Melgar B/ Papangkil Beach | Class SB | Swimming, fishing area, with residential area | 2 mg/L | 1 mg/L | 4 mg/L | 5 mg/L | 12 mg/L | <1 mg/L | 4 mg/L |
| | 7 | Buloc-Buloc Fish Sanctuary | Class SA | Tourist area, fish sanctuary | 1 mg/L | <1 mg/L | 11 mg/L | 9 mg/L | <1 mg/L | <1 mg/L | 4 mg/L |
| | 8 | Montemayor Proper | Class SB | Swimming, fishing | 2 mg/L | <1 mg/L | 9 mg/L | 11 mg/L | <1 mg/L | <1 mg/L | 4 mg/L |
| | 9 | Masaguing | Class SA | Swimming, fishing | 1 mg/L | <1 mg/L | 11 mg/L | 1 mg/L | <1 mg/L | 3 mg/L | 3 mg/L |
| | 10 | Tujod Fish Sanctuary | Class SA | Fish sanctuary | 1 mg/L | <1 mg/L | 7 mg/L | 3 mg/L | <1 mg/L | 2 mg/L | 4 mg/L |

SAMPLING STATIONS AND RESULTS OF ANALYSIS – NAUJAN MUNICIPAL WATERS 400m AWAY FROM SHORE (MARCH 4 TO 18, 2023)

| Source | Station No. | Station Identification | Classification | Current Beneficial Usage | WQG | Date of Sampling | | | | | |
|---|-------------|------------------------|----------------|---|--------|------------------|----------------|----------------|----------------|----------------|----------------|
| | | | | | | March 4, 2023 | March 13, 2023 | March 14, 2023 | March 16, 2023 | March 17, 2023 | March 18, 2023 |
| Naujan Municipal Waters 400m away from shore | 1 | Estrella Beach Bay | Class SB | swimming, fishing, tourist area, docking of boat, residential area (20-30 meters away from the beach) | 2 mg/L | - | <1 mg/L | 14 mg/L | 13 mg/L | - | 7 mg/L |
| | 2 | Naujan Cemetery | Class SC | Fishing, docking of boat, swimming | 3 mg/L | - | 8 mg/L | 8 mg/L | 3 mg/L | - | <1 mg/L |
| | 3 | Brgy Sta. Cruz | Class SB | swimming, presence of beach resort, tourist area | 2 mg/L | - | 3 mg/L | 9 mg/L | 11 mg/L | - | 2 mg/L |
| | 4 | San Jose 1 | Class SC | docking of boat, fishing, swimming, with residential area | 3 mg/L | - | 2 mg/L | 26 mg/L | 11 mg/L | - | 19 mg/L |
| | 5 | San Jose Proper | Class SC | swimming, docking of boat, fishing, residential area | 3 mg/L | - | 4 mg/L | 25 mg/L | 10 mg/L | - | - |
| | 6 | Pitugo Beach | Class SB | swimming, with residential area | 2 mg/L | - | 2 mg/L | 20 mg/L | - | - | 25 mg/L |
| | 7 | Papangkil Beach | Class SC | swimming, fishing with residential area | 3 mg/L | - | 12 mg/L | 13 mg/L | - | - | 16 mg/L |
| | 8 | Buloc-Buloc (Mangrove) | Class SA | Tourist area, Fish sanctuary | 1 mg/L | 9 mg/L | 12 mg/L | 7 mg/L | - | <1 mg/L | 3 mg/L |
| | 9 | Montemayor | Class SB | swimming, fishing | 2 mg/L | 5 mg/L | 30 mg/L | 10 mg/L | - | 28 mg/L | 5 mg/L |
| | 10 | Masaguig | Class SA | swimming, fishing | 1 mg/L | 12 mg/L | 15 mg/L | 7 mg/L | - | 8 mg/L | 8 mg/L |
| | 11 | Tujod Fish Sanctuary | Class SA | Fish sanctuary | 1 mg/L | 8 mg/L | 12 mg/L | 4 mg/L | - | 11 mg/L | 6 mg/L |

SAMPLING STATIONS AND RESULTS OF ANALYSIS - POLA, ORIENTAL MINDORO



SAMPLING STATIONS AND RESULTS OF ANALYSIS - POLA, ORIENTAL MINDORO (MARCH 2 TO 10, 2023)

| Source | Station No. | Station Identification | Classification | Current Beneficial Use | WQG | Date of Sampling | | | | | | | | |
|----------------|-------------|--------------------------|----------------|--|--------|------------------|---------------|---------------|---------------|---------------|--|---------------|---------------|----------------|
| | | | | | | March 2, 2023 | March 3, 2023 | March 4, 2023 | March 5, 2023 | March 6, 2023 | March 7, 2023 | March 8, 2023 | March 9, 2023 | March 10, 2023 |
| Pola Shoreline | 1 | Misong MPA | Class SA | Tourist area, fishing, fish sanctuary | 1 mg/L | 20 mg/L | 5 mg/L | 3 mg/L | <1 mg/L | 4 mg/L | 9 mg/L | 12 mg/L | 3 mg/L | 2 mg/L |
| | 2 | Central Tagumpay MPA | Class SA | Tourist area | 1 mg/L | 10 mg/L | 7 mg/L | 15 mg/L | 2 mg/L | 7 mg/L | 6 mg/L | 17 mg/L | 4 mg/L | 2 mg/L |
| | 3 | Tuguihan MPA | Class SC | Port of Pola, Docking of boat, fishing sanctuary | 3 mg/L | - | 6 mg/L | 25 mg/L | 7 mg/L | 5 mg/L | 5 mg/L | 12 mg/L | 34 mg/L | <1 mg/L |
| | 4 | Casiligan River Estuary | Class SA | Casiligan drainage area | 1 mg/L | - | 4 mg/L | 4 mg/L | 4 mg/L | 4 mg/L | 6 mg/L | 5 mg/L | 3 mg/L | 11 mg/L |
| | 5 | Calima MPA | Class SB | Fishing sanctuary, fishing | 2 mg/L | 3 mg/L | 8 mg/L | 5 mg/L | <1 mg/L | <1 mg/L | NO SAMPLING WAS CONDUCTED PER ADVICE OF MDRRMO/PCG/BANTAY DAGAT AND FISHERY MANAGEMENT UNIT DUE TO BAD WEATHER | 1 mg/L | 3 mg/L | 14 mg/L |
| | 6 | Polacay Beach | Class SC | Tourist area, presence of resort | 3 mg/L | 1 mg/L | 4 mg/L | 5 mg/L | <1 mg/L | <1 mg/L | | 3 mg/L | <1 mg/L | <1 mg/L |
| | 7 | Casiligan River Mangrove | Class SB | Within mangrove area, near boat docking area | 2 mg/L | - | - | 14 mg/L | 3 mg/L | 12 mg/L | | 2 mg/L | 2 mg/L | <1 mg/L |
| | 8 | Kwebang Tagumpay | Class SC | Within private resort, fishing, swimming | 3 mg/L | - | 10 mg/L | - | | | | 8 mg/L | 1 mg/L | <1 mg/L |

SAMPLING STATIONS AND RESULTS OF ANALYSIS - POLA, ORIENTAL MINDORO (MARCH 11 TO 19, 2023)

| Source | Station No. | Station Identification | Classification | Current Beneficial Use | WQG | Date of Sampling | | | | | | | | |
|----------------|-------------|---------------------------|----------------|--|--------|------------------|----------------|----------------|----------------|----------------|----------------|----------------|----------------|----------------|
| | | | | | | March 11, 2023 | March 12, 2023 | March 13, 2023 | March 14, 2023 | March 15, 2023 | March 16, 2023 | March 17, 2023 | March 18, 2023 | March 19, 2023 |
| Pola Shoreline | 1 | Misong MPA | Class SA | Tourist area, fishing, fish sanctuary | 1 mg/L | 3 mg/L | 7 mg/L | 1 mg/L | 2 mg/L | 4 mg/L | 12 mg/L | 4 mg/L | 6 mg/L | <1 mg/L |
| | 2 | Central Tagumpay MPA | Class SA | Tourist area | 1 mg/L | 1 mg/L | 5 mg/L | 9 mg/L | 7 mg/L | 4 mg/L | 14 mg/L | 17 mg/L | 1 mg/L | 3 mg/L |
| | 3 | Tuguihan MPA | Class SC | Port of Pola, Docking of boat, fishing sanctuary | 3 mg/L | 15 mg/L | 12 mg/L | 8 mg/L | 8 mg/L | 4 mg/L | 2 mg/L | 20 mg/L | 6 mg/L | 6 mg/L |
| | 4 | Casiligan River Estuary | Class SA | Casiligan drainage area | 1 mg/L | 12 mg/L | 27 mg/L | 5 mg/L | 5 mg/L | 13 mg/L | 12 mg/L | 13 mg/L | 2 mg/L | 2 mg/L |
| | 5 | Calima MPA | Class SB | Fishing sanctuary, fishing | 2 mg/L | 3 mg/L | 17 mg/L | 3 mg/L | 3 mg/L | 5 mg/L | 20 mg/L | 2 mg/L | 5 mg/L | 4 mg/L |
| | 6 | Polacay Beach | Class SC | Tourist area, presence of resort | 3 mg/L | 18 mg/L | 6 mg/L | 8 mg/L | 1 mg/L | 20 mg/L | 17 mg/L | 9 mg/L | 8 mg/L | 3 mg/L |
| | 7 | Casiligan River Mangrove | Class SB | Within mangrove area, near boat docking area | 2 mg/L | <1 mg/L | 4 mg/L | 10 mg/L | 6 mg/L | 2 mg/L | 2 mg/L | 3 mg/L | 5 mg/L | 2 mg/L |
| | 8 | Kwebang Tagumpay | Class SC | Within private resort, fishing, swimming | 3 mg/L | 3 mg/L | <1 mg/L | 4 mg/L | 5 mg/L | 2 mg/L | 3 mg/L | 6 mg/L | 3 mg/L | 7 mg/L |
| | 9 | Buhay na Tubig (Kanluran) | Class SD | | 5 mg/L | - | - | - | - | 4 mg/L | - | - | - | - |
| | 10 | Buhay na Tubig (Sawang) | Class SD | | 5 mg/L | - | - | - | - | 5 mg/L | - | - | - | - |
| | 11 | Buhay na Tubig (Central) | Class SD | | 5 mg/L | - | - | - | - | <1 mg/L | - | - | - | - |

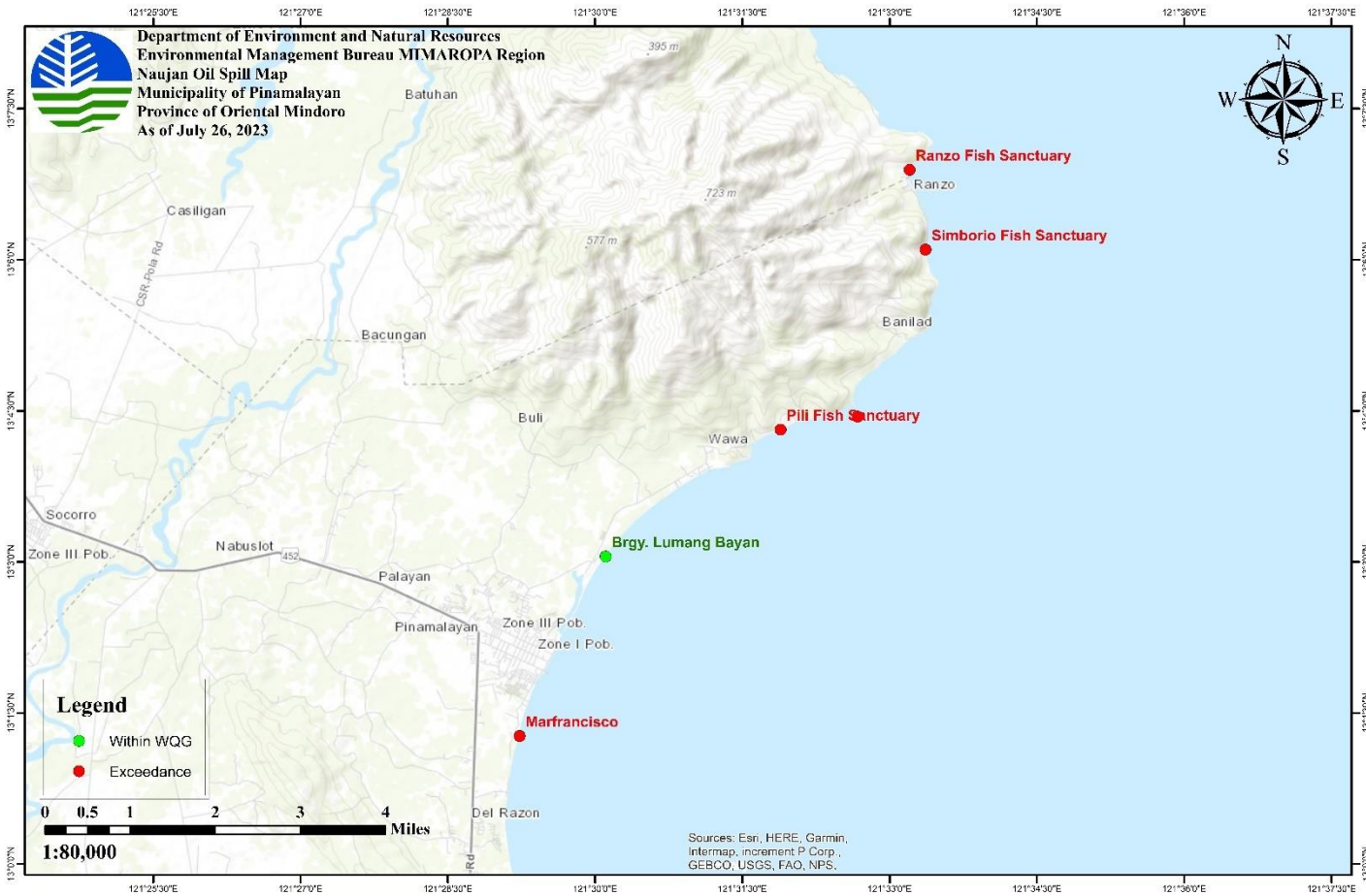
SAMPLING STATIONS AND RESULTS OF ANALYSIS - POLA, ORIENTAL MINDORO (MARCH 21 TO APRIL 11, 2023)

| Source | Station No. | Station Identification | Classification | Current Beneficial Use | WQG | Date of Sampling | | | | | | | |
|----------------|-------------|----------------------------|----------------|--|--------|------------------|----------------|----------------|----------------|----------------|---------------|---------------|----------------|
| | | | | | | March 21, 2023 | March 23, 2023 | March 25, 2023 | March 27, 2023 | March 28, 2023 | April 2, 2023 | April 5, 2023 | April 11, 2023 |
| Pola Shoreline | 1 | Misong MPA | Class SA | Tourist area, fishing, fish sanctuary | 1 mg/L | 4 mg/L | 4 mg/L | 31 mg/L | 6 mg/L | - | 2 mg/L | 8 mg/L | 1 mg/L |
| | 2 | Central Tagumpay MPA | Class SA | Tourist area | 1 mg/L | 4 mg/L | <1 mg/L | 72 mg/L | 3 mg/L | - | <1 mg/L | 3 mg/L | <1 mg/L |
| | 3 | Tuguihan MPA | Class SC | Port of Pola, Docking of boat, fishing sanctuary | 3 mg/L | 4 mg/L | 3 mg/L | 13 mg/L | 15 mg/L | - | 6 mg/L | <1 mg/L | <1 mg/L |
| | 4 | Casiligan River Estuary | Class SA | Casiligan drainage area | 1 mg/L | 24 mg/L | <1 mg/L | 12 mg/L | 8 mg/L | - | <1 mg/L | 2 mg/L | <1 mg/L |
| | 5 | Calima MPA | Class SB | Fishing sanctuary, fishing | 2 mg/L | 5 mg/L | <1 mg/L | 10 mg/L | 5 mg/L | - | <1 mg/L | 2 mg/L | 2 mg/L |
| | 6 | Polacay Beach | Class SC | Tourist area, presence of resort | 3 mg/L | 5 mg/L | <1 mg/L | 10 mg/L | 7 mg/L | - | <1 mg/L | 2 mg/L | <1 mg/L |
| | 7 | Casiligan River Mangrove | Class SB | Within mangrove area, near boat docking area | 2 mg/L | 4 mg/L | 1 mg/L | 17 mg/L | 6 mg/L | - | 1 mg/L | 5 mg/L | 4 mg/L |
| | 8 | Kwebang Tagumpay | Class SC | Within private resort, fishing, swimming | 3 mg/L | - | 3 mg/L | 11 mg/L | 12 mg/L | - | 4 mg/L | 2 mg/L | <1 mg/L |
| | 9 | Buhay na Tubig (Kanaluran) | Class SD | | 5 mg/L | - | <1 mg/L | - | - | 2 mg/L | - | - | - |
| | 10 | Buhay na Tubig (Sawang) | Class SD | | 5 mg/L | - | 3 mg/L | - | - | - | - | - | - |
| | 11 | Buhay na Tubig (Central) | Class SD | | 5 mg/L | - | <1 mg/L | - | - | - | - | - | - |
| | 12 | Calima (Sitio Dayap) | | | | - | 5 mg/L | 5 mg/L | - | - | - | - | - |

SAMPLING STATIONS AND RESULTS OF ANALYSIS - POLA, ORIENTAL MINDORO (APRIL 12 TO AUGUST 22, 2023)

| Source | Station No. | Station Identification | Classification | Current Beneficial Use | WQG | Date of Sampling | | | | | | | |
|----------------|-------------|---------------------------|----------------|--|--------|------------------|----------------|--------------|--------------|---------------|---------------|---------------|---------------|
| | | | | | | April 12, 2023 | April 20, 2023 | May 04, 2023 | June 9, 2023 | June 22, 2023 | July 14, 2023 | July 21, 2023 | Aug. 22, 2023 |
| Pola Shoreline | 1 | Misong MPA | Class SA | Tourist area, fishing, fish sanctuary | 1 mg/L | - | <1 mg/L | 3 mg/L | 3 mg/L | <1 mg/L | 1 mg/L | 6 mg/L | 4 mg/L |
| | 2 | Central Tagumpay MPA | Class SA | Tourist area | 1 mg/L | - | 2 mg/L | <1 mg/L | 3 mg/L | 10 mg/L | 4 mg/L | 5 mg/L | 5 mg/L |
| | 3 | Tuguihan MPA | Class SC | Port of Pola, Docking of boat, fishing sanctuary | 3 mg/L | - | <1 mg/L | <1 mg/L | <1 mg/L | 4 mg/L | <1 mg/L | 7 mg/L | 3 mg/L |
| | 4 | Casiligan River Estuary | Class SA | Casiligan drainage area | 1 mg/L | - | - | 18 mg/L | 3 mg/L | 4 mg/L | <1 mg/L | 34 mg/L | 4 mg/L |
| | 5 | Calima MPA | Class SB | Fishing sanctuary, fishing | 2 mg/L | <1 mg/L | <1 mg/L | <1 mg/L | 3 mg/L | <1 mg/L | 2 mg/L | 2 mg/L | 4 mg/L |
| | 6 | Polacay Beach | Class SC | Tourist area, presence of resort | 3 mg/L | - | <1 mg/L | 2 mg/L | 3 mg/L | 4 mg/L | 2 mg/L | 1 mg/L | 3 mg/L |
| | 7 | Casiligan River Mangrove | Class SB | Within mangrove area, near boat docking area | 2 mg/L | - | - | 25 mg/L | - | 6 mg/L | - | - | 4 mg/L |
| | 8 | Kwebang Tagumpay | Class SC | Within private resort, fishing, swimming | 3 mg/L | - | <1 mg/L | <1 mg/L | 3 mg/L | 5 mg/L | <1 mg/L | 14 mg/L | 5 mg/L |
| | 9 | Buhay na Tubig (Kanluran) | Class SD | | 5 mg/L | <1 mg/L | <1 mg/L | - | - | - | - | - | - |
| | 10 | Buhay na Tubig (Sawang) | Class SD | | 5 mg/L | <1 mg/L | <1 mg/L | - | - | - | - | - | - |
| | 11 | Buhay na Tubig (Central) | Class SD | | 5 mg/L | 5 mg/L | - | - | - | - | - | - | - |
| | 12 | Calima (Sitio Dayap) | Class SD | | 5 mg/L | - | 5 mg/L | - | - | - | - | - | - |

SAMPLING STATIONS AND RESULTS OF ANALYSIS - PINAMALAYAN, ORIENTAL MINDORO



SAMPLING STATIONS AND RESULTS OF ANALYSIS - PINAMALAYAN, ORIENTAL MINDORO (MARCH 2 TO 10, 2023)

| Source | Station No. | Station Identification | Classification | Current Beneficial Usage | WQG | Date of Sampling | | | | | | | | |
|---|-------------|---------------------------|----------------|-----------------------------------|--------|------------------|--|---------------|---------------|---------------|---------------|---------------|---------------|----------------|
| | | | | | | March 2, 2023 | March 3, 2023 | March 4, 2023 | March 5, 2023 | March 6, 2023 | March 7, 2023 | March 8, 2023 | March 9, 2023 | March 10, 2023 |
| Pinamalayan Bay (Coastal), Oriental Mindoro | 1 | Brgy. Lumang Bayan | Class SC | Swimming, docking of boat | 3 mg/L | <1 mg/L | NO SAMPLING WAS CONDUCTED PER ADVICE OF MDRRMO/PCG/BANTAY DAGAT AND FISHERY MANAGEMENT UNIT DUE TO BAD WEATHER | | | | 12 mg/L | 2 mg/L | <1 mg/L | 27 mg/L |
| | 2 | Simborio Fish Sanctuary | Class SA | Fishing | 1 mg/L | 9 mg/L | 4 mg/L | 9 mg/L | 3 mg/L | 2 mg/L | 35 mg/L | 5 mg/L | 2 mg/L | 12 mg/L |
| | 3 | Ginapangan Fish Sanctuary | Class SA | Fish sanctuary | 1 mg/L | 47 mg/L | 6 mg/L | 17 mg/L | 3 mg/L | 1 mg/L | 17 mg/L | 3 mg/L | <1 mg/L | 5 mg/L |
| | 4 | Pili Fish Sanctuary | Class SA | Swimming, Fishing, fish sanctuary | 1 mg/L | 4 mg/L | 4 mg/L | 6 mg/L | 5 mg/L | 1 mg/L | 21 mg/L | 4 mg/L | 2 mg/L | 6 mg/L |
| | 5 | Ranzo Fish Sanctuary | Class SA | Swimming, fishing | 1 mg/L | 3 mg/L | 6 mg/L | 2 mg/L | 3 mg/L | 16 mg/L | 7 mg/L | 1 mg/L | 4 mg/L | 5 mg/L |
| | 6 | Marfrancisco | (NEW STATION) | Swimming, Fishing | 2 mg/L | - | - | - | | | 10 mg/L | 3 mg/L | 5 mg/L | 4 mg/L |

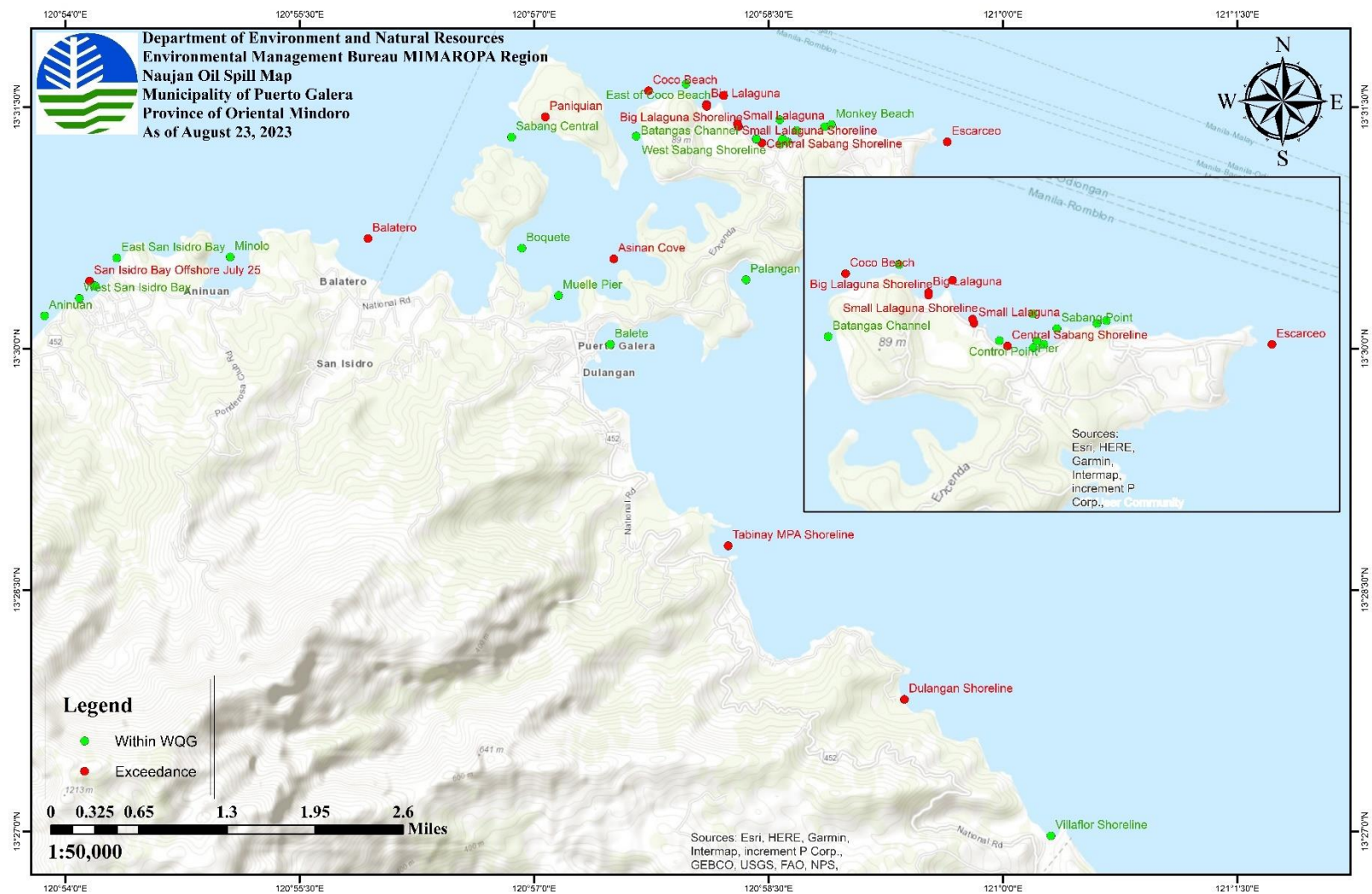
SAMPLING STATIONS AND RESULTS OF ANALYSIS - PINAMALAYAN, ORIENTAL MINDORO (MARCH 11 TO 19, 2023)

| Source | Station No. | Station Identification | Classification | Current Beneficial Usage | WQG | Date of Sampling | | | | | | | | |
|---|-------------|---------------------------|----------------|-----------------------------------|--------|------------------|----------------|----------------|----------------|----------------|----------------|----------------|----------------|----------------|
| | | | | | | March 11, 2023 | March 12, 2023 | March 13, 2023 | March 14, 2023 | March 15, 2023 | March 16, 2023 | March 17, 2023 | March 18, 2023 | March 19, 2023 |
| Pinamalayan Bay (Coastal), Oriental Mindoro | 1 | Brgy. Lumang Bayan | Class SC | Swimming, docking of boat | 3 mg/L | 24 mg/L | 5 mg/L | - | 8 mg/L | 5 mg/L | 5 mg/L | - | 13 mg/L | 8 mg/L |
| | 2 | Simborio Fish Sanctuary | Class SA | Fishing | 1 mg/L | - | 27 mg/L | 60 mg/L | 6 mg/L | 9 mg/L | 14 mg/L | 5 mg/L | 6 mg/L | 7 mg/L |
| | 3 | Ginapangan Fish Sanctuary | Class SA | Fish sanctuary | 1 mg/L | 27 mg/L | 15 mg/L | 9 mg/L | 5 mg/L | 8 mg/L | 6 mg/L | 4 mg/L | 10 mg/L | <1 mg/L |
| | 4 | Pili Fish Sanctuary | Class SA | Swimming, Fishing, fish sanctuary | 1 mg/L | 9 mg/L | 17 mg/L | 9 mg/L | 8 mg/L | 8 mg/L | 4 mg/L | 8 mg/L | <1 mg/L | 4 mg/L |
| | 5 | Ranzo Fish Sanctuary | Class SA | Swimming, fishing | 1 mg/L | - | 9 mg/L | - | 5 mg/L | 55 mg/L | 5 mg/L | 8 mg/L | 7 mg/L | 17 mg/L |
| | 6 | Marfrancisco | Class SB | (NEW STATION) | 2 mg/L | 3 mg/L | <1 mg/L | 29 mg/L | 8 mg/L | 5 mg/L | 2 mg/L | - | 3 mg/L | <1 mg/L |

SAMPLING STATIONS AND RESULTS OF ANALYSIS - PINAMALAYAN, ORIENTAL MINDORO (MARCH 21 TO JULY 26, 2023)

| Source | Station No. | Station Identification | Classification | Current Beneficial Usage | WQG | Date of Sampling | | | | | | | | | |
|---|-------------|---------------------------|----------------|-----------------------------------|--------|------------------|----------------|----------------|----------------|---------------|----------------|--------------|---------------|---------------|---------------|
| | | | | | | March 21, 2023 | March 23, 2023 | March 25, 2023 | March 27, 2023 | April 2, 2023 | April 16, 2023 | May 03, 2023 | June 20, 2023 | July 12, 2023 | July 26, 2023 |
| Pinamalayan Bay (Coastal), Oriental Mindoro | 1 | Brgy. Lumang Bayan | Class SC | Swimming, docking of boat | 3 mg/L | 24 mg/L | 2 mg/L | <1 mg/L | 3 mg/L | 3 mg/L | 24 mg/L | <1 mg/L | <1 mg/L | 2 mg/L | 1 mg/L |
| | 2 | Simborio Fish Sanctuary | Class SA | Fishing | 1 mg/L | 4 mg/L | <1 mg/L | 2 mg/L | 2 mg/L | 3 mg/L | 6 mg/L | 1 mg/L | 34 mg/L | <1 mg/L | 3 mg/L |
| | 3 | Ginapangan Fish Sanctuary | Class SA | Fish sanctuary | 1 mg/L | <1 mg/L | 7 mg/L | 1 mg/L | 6 mg/L | 5 mg/L | 11 mg/L | 35 mg/L | 6 mg/L | 4 mg/L | 3 mg/L |
| | 4 | Pili Fish Sanctuary | Class SA | Swimming, Fishing, fish sanctuary | 1 mg/L | <1 mg/L | 2 mg/L | <1 mg/L | 3 mg/L | 5 mg/L | - | 1 mg/L | 2 mg/L | <1 mg/L | 4 mg/L |
| | 5 | Ranzo Fish Sanctuary | Class SA | Swimming, fishing | 1 mg/L | 34 mg/L | 3 mg/L | 1 mg/L | 4 mg/L | 3 mg/L | 5 mg/L | <1 mg/L | 1 mg/L | <1 mg/L | 4 mg/L |
| | 6 | Marfrancisco | Class SB | (NEW STATION) | 2 mg/L | <1 mg/L | <1 mg/L | 2 mg/L | 3 mg/L | 4 mg/L | 3 mg/L | <1 mg/L | 2 mg/L | 7 mg/L | 7 mg/L |

SAMPLING STATIONS AND RESULTS OF ANALYSIS – PUERTO GALERA, ORIENTAL MINDORO



SAMPLING STATIONS AND RESULTS OF ANALYSIS – PUERTO GALERA, ORIENTAL MINDORO (MARCH 15 TO MAY 23, 2023)

| Source | Station No. | Station Identification | Classification | WQG | Date of Sampling | | | | | | | | | |
|---------------------------------|-------------|--------------------------|----------------|--------|------------------|----------------|----------------|---------------|---------------|---------------|----------------|----------------|----------------|--------------|
| | | | | | March 15, 2023 | March 27, 2023 | March 30, 2023 | April 1, 2023 | April 2, 2023 | April 3, 2023 | April 10, 2023 | April 14, 2023 | April 25, 2023 | May 23, 2023 |
| Puerto Galera, Oriental Mindoro | 1 | Monkey Beach | Class SB | 2 mg/L | <1 mg/L | - | <1 mg/L | 1 mg/L | - | 18 mg/L | 4 mg/L | 7 mg/L | <1 mg/L | <1 mg/L |
| | 2 | Dungon Beach | Class SB | 2 mg/L | 17 mg/L | - | 9 mg/L | 1 mg/L | - | 4 mg/L | 5 mg/L | 4 mg/L | 5 mg/L | <1 mg/L |
| | 3 | Balete | Class SB | 2 mg/L | - | <1 mg/L | 5 mg/L | 8 mg/L | 9 mg/L | 5 mg/L | 3 mg/L | 1 mg/L | <1 mg/L | <1 mg/L |
| | 4 | Palangan | Class SB | 2 mg/L | - | 4 mg/L | 1 mg/L | 2 mg/L | 18 mg/L | 10 mg/L | 2 mg/L | - | <1 mg/L | <1 mg/L |
| | 5 | Escarceo | Class SB | 2 mg/L | - | 1 mg/L | 2 mg/L | 1 mg/L | 3 mg/L | 3 mg/L | 2 mg/L | 3 mg/L | <1 mg/L | <1 mg/L |
| | 6 | Villaflor Shoreline | Class SB | 2 mg/L | - | - | 4 mg/L | 5 mg/L | 4 mg/L | 3 mg/L | 1 mg/L | 4 mg/L | <1 mg/L | <1 mg/L |
| | 7 | Dulangan Shoreline | Class SB | 2 mg/L | - | - | 5 mg/L | 1 mg/L | 4 mg/L | 13 mg/L | 3 mg/L | 47 mg/L | <1 mg/L | <1 mg/L |
| | 8 | Tabinay MPA Shoreline | Class SB | 2 mg/L | - | - | 3 mg/L | 4 mg/L | 8 mg/L | 9 mg/L | 4 mg/L | 12 mg/L | <1 mg/L | <1 mg/L |
| | 9 | Sabang Point | Class SB | 2 mg/L | - | - | <1 mg/L | 2 mg/L | - | 26 mg/L | 8 mg/L | 5 mg/L | <1 mg/L | <1 mg/L |
| | 10 | Control Point | Class SB | 2 mg/L | - | - | 7 mg/L | 1 mg/L | - | 11 mg/L | 9 mg/L | 4 mg/L | <1 mg/L | 23 mg/L |
| | 11 | East of Sabang | Class SB | 2 mg/L | 8 mg/L | - | <1 mg/L | 1 mg/L | - | 13 mg/L | 8 mg/L | 19 mg/L | <1 mg/L | <1 mg/L |
| | 12 | Pier | Class SB | 2 mg/L | 6 mg/L | - | 2 mg/L | 2 mg/L | - | 12 mg/L | 6 mg/L | 4 mg/L | <1 mg/L | <1 mg/L |
| | 13 | Sabang Central | Class SB | 2 mg/L | - | - | 5 mg/L | <1 mg/L | - | <1 mg/L | 3 mg/L | 24 mg/L | <1 mg/L | <1 mg/L |
| | 14 | Central Sabang Shoreline | Class SB | 2 mg/L | - | - | 4 mg/L | 2 mg/L | - | 63 mg/L | 2 mg/L | 2 mg/L | 1 mg/L | <1 mg/L |
| | 15 | West Sabang Shoreline | Class SB | 2 mg/L | - | - | 14 mg/L | 2 mg/L | - | 66 mg/L | 5 mg/L | 7 mg/L | <1 mg/L | <1 mg/L |
| | 16 | Small Lalaguna Shoreline | Class SB | 2 mg/L | - | - | 3 mg/L | 2 mg/L | - | 1 mg/L | <1 mg/L | 4 mg/L | 8 mg/L | <1 mg/L |

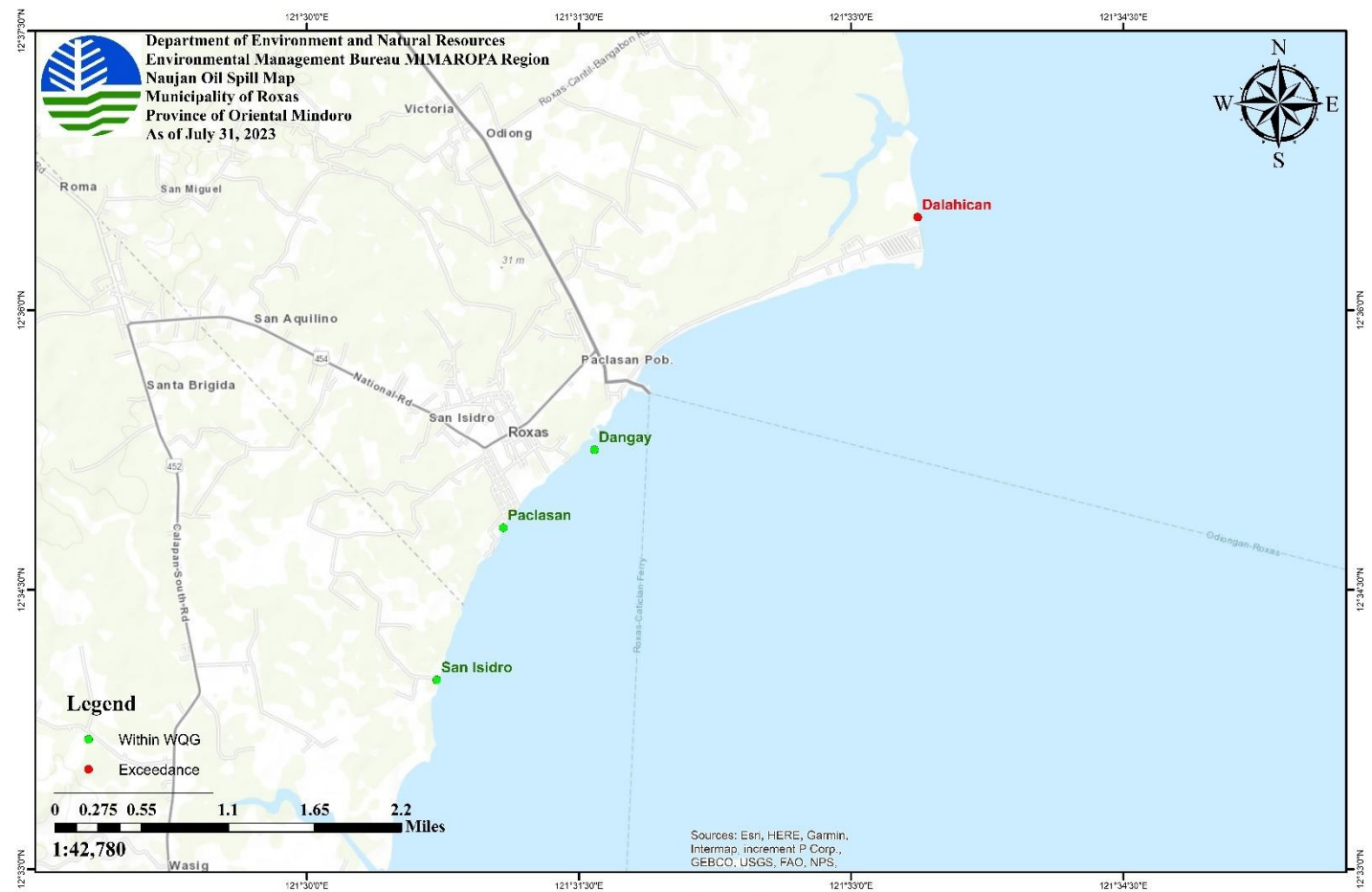
| | | | | | | | | | | | | | |
|----|----------------------------------|----------|--------|---|---|---------|--------|---|---------|---------|---------|---------|---------|
| 17 | Small Lalaguna | Class SB | 2 mg/L | - | - | 4 mg/L | 2 mg/L | - | 18 mg/L | 1 mg/L | <1 mg/L | <1 mg/L | <1 mg/L |
| 18 | Middle of Small and Big Lalaguna | Class SB | 2 mg/L | - | - | 4 mg/L | 5 mg/L | | <1 mg/L | 1 mg/L | 3 mg/L | 26 mg/L | <1 mg/L |
| 19 | Big Lalaguna | Class SB | 2 mg/L | - | - | 3 mg/L | 3 mg/L | - | 7 mg/L | <1 mg/L | 4 mg/L | <1 mg/L | <1 mg/L |
| 20 | Big Lalaguna Shoreline | Class SB | 2 mg/L | - | - | 5 mg/L | 3 mg/L | - | 10 mg/L | 3 mg/L | 2 mg/L | 49 mg/L | 22 mg/L |
| 21 | East of Coco Beach | Class SB | 2 mg/L | - | - | 5 mg/L | 3 mg/L | - | 4 mg/L | 3 mg/L | 4 mg/L | <1 mg/L | 5 mg/L |
| 22 | Coco Beach | Class SB | 2 mg/L | - | - | <1 mg/L | 2 mg/L | - | <1 mg/L | <1 mg/L | 2 mg/L | 6 mg/L | <1 mg/L |
| 23 | Batangas Channel | Class SB | 2 mg/L | - | - | 4 mg/L | 3 mg/L | - | 6 mg/L | 4 mg/L | 2 mg/L | <1 mg/L | <1 mg/L |
| 24 | Asinan Cove | Class SB | 2 mg/L | - | - | 16 mg/L | 5 mg/L | - | 5 mg/L | 35 mg/L | 4 mg/L | 1 mg/L | <1 mg/L |
| 25 | Paniquian | Class SB | 2 mg/L | - | - | 4 mg/L | 4 mg/L | - | <1 mg/L | 2 mg/L | 1 mg/L | 10 mg/L | 16 mg/L |
| 26 | Aninuan | Class SB | 2 mg/L | - | - | 7 mg/L | 5 mg/L | - | 14 mg/L | 2 mg/L | 5 mg/L | 17 mg/L | <1 mg/L |
| 27 | West San Isidro Bay | Class SB | 2 mg/L | - | - | 6 mg/L | 4 mg/L | - | <1 mg/L | 1 mg/L | <1 mg/L | 24 mg/L | <1 mg/L |
| 28 | East San Isidro Bay | Class SB | 2 mg/L | - | - | 1 mg/L | 2 mg/L | - | 2 mg/L | <1 mg/L | 10 mg/L | 1 mg/L | <1 mg/L |
| 29 | Central San Isidro Bay | Class SB | 2 mg/L | - | - | 5 mg/L | 5 mg/L | - | 25 mg/L | 2 mg/L | 10 mg/L | 17 mg/L | <1 mg/L |
| 30 | Minolo | Class SB | 2 mg/L | - | - | 6 mg/L | 4 mg/L | - | 3 mg/L | 2 mg/L | 3 mg/L | 16 mg/L | <1 mg/L |
| 31 | Balatero | Class SB | 2 mg/L | - | - | 4 mg/L | 4 mg/L | - | 3 mg/L | 5 mg/L | 2 mg/L | 1 mg/L | <1 mg/L |
| 32 | Boquete | Class SB | 2 mg/L | - | - | 2 mg/L | 4 mg/L | - | 4 mg/L | 5 mg/L | 10 mg/L | 1 mg/L | <1 mg/L |
| 33 | Muelle Pier | Class SB | 2 mg/L | - | - | 4 mg/L | 4 mg/L | - | 7 mg/L | - | 6 mg/L | <1 mg/L | <1 mg/L |
| 34 | Sabang Offshore | Class SB | 2 mg/L | - | - | - | 4 mg/L | - | 4 mg/L | 42 mg/L | 3 mg/L | <1 mg/L | <1 mg/L |
| 35 | San Isidro Bay Offshore | Class SB | 2 mg/L | - | - | - | 4 mg/L | - | 10 mg/L | 4 mg/L | 4 mg/L | 1 mg/L | <1 mg/L |

SAMPLING STATIONS AND RESULTS OF ANALYSIS – PUERTO GALERA, ORIENTAL MINDORO (JUNE 14 TO AUGUST 23, 2023)

| Source | Station No. | Station Identification | Classification | WQG | Date of Sampling | | | | |
|---------------------------------|-------------|----------------------------------|----------------|--------|------------------|---------------|---------------|---------------|---------------|
| | | | | | June 14, 2023 | June 29, 2023 | July 12, 2023 | July 25, 2023 | Aug. 23, 2023 |
| Puerto Galera, Oriental Mindoro | 1 | Monkey Beach | Class SB | 2 mg/L | 4 mg/L | 4 mg/L | 3 mg/L | 3 mg/L | 2 mg/L |
| | 2 | Dungon Beach | Class SB | 2 mg/L | 1 mg/L | 3 mg/L | 2 mg/L | 3 mg/L | <1 mg/L |
| | 3 | Balete | Class SB | 2 mg/L | 4 mg/L | 4 mg/L | 1 mg/L | 2 mg/L | 2 mg/L |
| | 4 | Palangan | Class SB | 2 mg/L | <1 mg/L | 4 mg/L | <1 mg/L | 2 mg/L | 2 mg/L |
| | 5 | Escarceo | Class SB | 2 mg/L | <1 mg/L | 3 mg/L | <1 mg/L | 2 mg/L | 4 mg/L |
| | 6 | Villaflor Shoreline | Class SD | 5 mg/L | 5 mg/L | 4 mg/L | <1 mg/L | 3 mg/L | 5 mg/L |
| | 7 | Dulangan Shoreline | Class SB | 2 mg/L | <1 mg/L | 2 mg/L | 3 mg/L | 2 mg/L | 5 mg/L |
| | 8 | Tabinay MPA Shoreline | Class SB | 2 mg/L | <1 mg/L | 5 mg/L | <1 mg/L | 4 mg/L | 5 mg/L |
| | 9 | Sabang Point | Class SB | 2 mg/L | 2 mg/L | 3 mg/L | <1 mg/L | 3 mg/L | <1 mg/L |
| | 10 | Control Point | Class SB | 2 mg/L | 8 mg/L | 5 mg/L | <1 mg/L | 3 mg/L | 1 mg/L |
| | 11 | East of Sabang | Class SB | 2 mg/L | 6 mg/L | 5 mg/L | <1 mg/L | 5 mg/L | 2 mg/L |
| | 12 | Pier | Class SB | 2 mg/L | <1 mg/L | 3 mg/L | <1 mg/L | <1 mg/L | <1 mg/L |
| | 13 | Sabang Central | Class SB | 2 mg/L | 5 mg/L | 3 mg/L | <1 mg/L | 1 mg/L | 1 mg/L |
| | 14 | Central Sabang Shoreline | Class SB | 2 mg/L | 26 mg/L | 33 mg/L | 9 mg/L | <1 mg/L | 3 mg/L |
| | 15 | West Sabang Shoreline | Class SB | 2 mg/L | 2 mg/L | 23 mg/L | - | 4 mg/L | 2 mg/L |
| | 16 | Small Lalaguna Shoreline | Class SB | 2 mg/L | <1 mg/L | 39 mg/L | <1 mg/L | 2 mg/L | 3 mg/L |
| | 17 | Small Lalaguna | Class SB | 2 mg/L | 3 mg/L | 3 mg/L | <1 mg/L | 2 mg/L | 4 mg/L |
| | 18 | Middle of Small and Big Lalaguna | Class SB | 2 mg/L | 1 mg/L | 3 mg/L | 6 mg/L | 2 mg/L | 5 mg/L |
| | 19 | Big Lalaguna | Class SB | 2 mg/L | 39 mg/L | 2 mg/L | 25 mg/L | 2 mg/L | 4 mg/L |

| | | | | | | | | | |
|--|----|-------------------------|----------|--------|---------|-------------|---------|--------|---------|
| | 20 | Big Lalaguna Shoreline | Class SB | 2 mg/L | 8 mg/L | 4 mg/L | 3 mg/L | 2 mg/L | 4 mg/L |
| | 21 | East of Coco Beach | Class SB | 2 mg/L | 13 mg/L | 2 mg/L | <1 mg/L | 4 mg/L | 2 mg/L |
| | 22 | Coco Beach | Class SB | 2 mg/L | 23 mg/L | 3 mg/L | <1 mg/L | 2 mg/L | 3 mg/L |
| | 23 | Batangas Channel | Class SB | 2 mg/L | 6 mg/L | 3 mg/L | <1 mg/L | 2 mg/L | 2 mg/L |
| | 24 | Asinan Cove | Class SB | 2 mg/L | 17 mg/L | 4 mg/L | 3 mg/L | 3 mg/L | 3 mg/L |
| | 25 | Paniquian | Class SB | 2 mg/L | <1 mg/L | 5 mg/L | <1 mg/L | 5 mg/L | 5 mg/L |
| | 26 | Aninuan | Class SD | 5 mg/L | <1 mg/L | 4 mg/L | 3 mg/L | 3 mg/L | 2 mg/L |
| | 27 | West San Isidro Bay | Class SB | 2 mg/L | 1 mg/L | No data yet | <1 mg/L | 4 mg/L | 1 mg/L |
| | 28 | East San Isidro Bay | Class SB | 2 mg/L | <1 mg/L | 4 mg/L | 9 mg/L | 4 mg/L | <1 mg/L |
| | 29 | Central San Isidro Bay | Class SB | 2 mg/L | 1 mg/L | 5 mg/L | <1 mg/L | 5 mg/L | 2 mg/L |
| | 30 | Minolo | Class SB | 2 mg/L | <1 mg/L | 3 mg/L | 2 mg/L | 4 mg/L | 2 mg/L |
| | 31 | Balatero | Class SB | 2 mg/L | 8 mg/L | No data yet | 1 mg/L | 3 mg/L | 3 mg/L |
| | 32 | Boquete | Class SB | 2 mg/L | 3 mg/L | No data yet | 1 mg/L | 3 mg/L | 1 mg/L |
| | 33 | Muelle Pier | Class SA | 1 mg/L | 67 mg/L | No data yet | <1 mg/L | 5 mg/L | <1 mg/L |
| | 34 | Sabang Offshore | Class SB | 2 mg/L | 5 mg/L | No data yet | 7 mg/L | - | 2 mg/L |
| | 35 | San Isidro Bay Offshore | Class SB | 2 mg/L | 6 mg/L | No data yet | 6 mg/L | 5 mg/L | - |

SAMPLING STATIONS AND RESULTS OF ANALYSIS – ROXAS, ORIENTAL MINDORO



SAMPLING STATIONS AND RESULTS OF ANALYSIS – ROXAS, ORIENTAL MINDORO (MARCH 3 TO 12, 2023)

| Source | Station No. | Station Identification | Classification | Current Beneficial Usage | WQG | Date of Sampling | | | | | | | | | |
|------------------------------------|-------------|------------------------|----------------|--|--------|------------------|---------------|---------------|---------------|---------------|---------------|---------------|----------------|----------------|----------------|
| | | | | | | March 3, 2023 | March 4, 2023 | March 5, 2023 | March 6, 2023 | March 7, 2023 | March 8, 2023 | March 9, 2023 | March 10, 2023 | March 11, 2023 | March 12, 2023 |
| Roxas Bay, Roxas, Oriental Mindoro | 1 | Dalahican | Class SB | Swimming, fishing, with household near the beach front | 2 mg/L | 4 mg/L | 6 mg/L | 14 mg/L | 4 mg/L | 8 mg/L | 1 mg/L | 34 mg/L | 4 mg/L | 2 mg/L | <1 mg/L |
| | 2 | Dangay | Class SB | Swimming, fishing, household area | 2 mg/L | 4 mg/L | 5 mg/L | 3 mg/L | 4 mg/L | 5 mg/L | 2 mg/L | 22 mg/L | 5 mg/L | 1 mg/L | <1 mg/L |
| | 3 | Paclasan | Class SB | Swimming, fishing, household area | 2 mg/L | 4 mg/L | 4 mg/L | 2 mg/L | 4 mg/L | 4 mg/L | 2 mg/L | 4 mg/L | 3 mg/L | 3 mg/L | <1 mg/L |
| | 4 | San Isidro | Class SB | Swimming, fishing, household area | 2 mg/L | 3 mg/L | 15 mg/L | <1 mg/L | 3 mg/L | <1 mg/L | <1 mg/L | 11 mg/L | 3 mg/L | 6 mg/L | <1 mg/L |

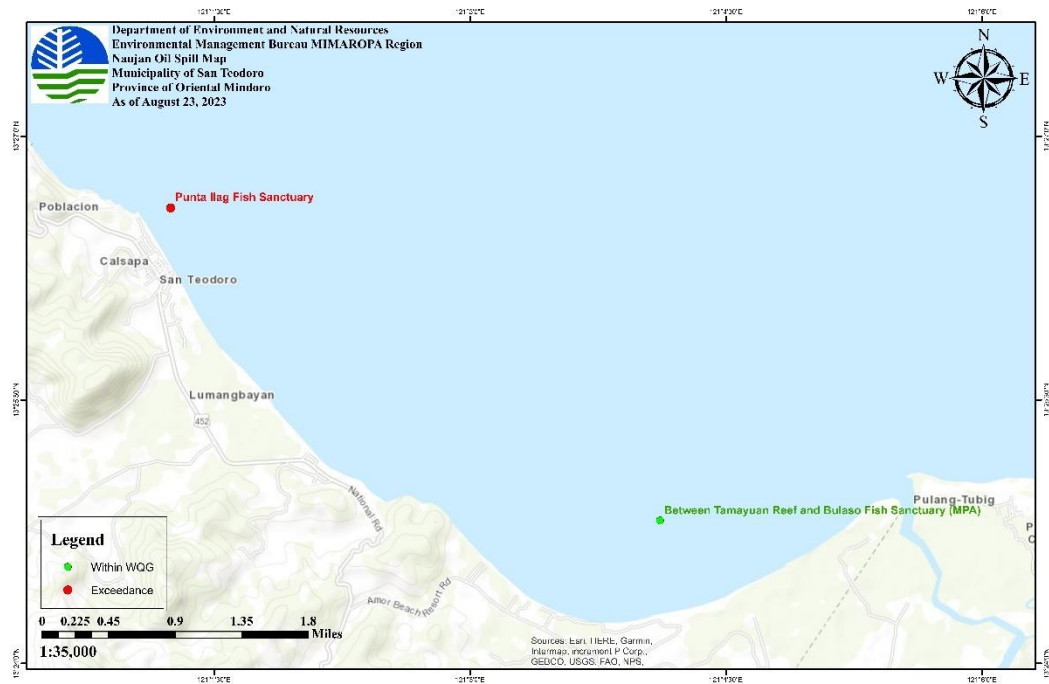
SAMPLING STATIONS AND RESULTS OF ANALYSIS – ROXAS, ORIENTAL MINDORO (MARCH 13 TO APRIL 17, 2023)

| Source | Station No. | Station Identification | Classification | Current Beneficial Usage | WQG | Date of Sampling | | | | | | | | | | | |
|------------------------------------|-------------|------------------------|----------------|--|--------|------------------|----------------|----------------|----------------|----------------|----------------|----------------|----------------|----------------|---------------|----------------|--------------|
| | | | | | | March 13, 2023 | March 14, 2023 | March 15, 2023 | March 16, 2023 | March 19, 2023 | March 21, 2023 | March 23, 2023 | March 25, 2023 | March 27, 2023 | April 2, 2023 | April 17, 2023 | May 02, 2023 |
| Roxas Bay, Roxas, Oriental Mindoro | 1 | Dalahican | Class SB | Swimming, fishing, with household near the beach front | 2 mg/L | 22 mg/L | 10 mg/L | 4 mg/L | 11 mg/L | 3 mg/L | 4 mg/L | <1 mg/L | 9 mg/L | 5 mg/L | 5 mg/L | 5 mg/L | 2 mg/L |
| | 2 | Dangay | Class SB | Swimming, fishing, household area | 2 mg/L | 5 mg/L | 7 mg/L | 8 mg/L | 25 mg/L | 10 mg/L | 3 mg/L | <1 mg/L | 5 mg/L | 1 mg/L | 2 mg/L | 12 mg/L | <1 mg/L |
| | 3 | Paclasan | Class SB | Swimming, fishing, household area | 2 mg/L | 12 mg/L | 15 mg/L | <1 mg/L | 2 mg/L | 18 mg/L | 2 mg/L | 1 mg/L | <1 mg/L | 2 mg/L | 5 mg/L | 5 mg/L | 3 mg/L |
| | 4 | San Isidro | Class SB | Swimming, fishing, household area | 2 mg/L | <1 mg/L | 15 mg/L | 23 mg/L | 4 mg/L | <1 mg/L | 5 mg/L | 2 mg/L | 1 mg/L | <1 mg/L | 3 mg/L | 6 mg/L | 2 mg/L |

SAMPLING STATIONS AND RESULTS OF ANALYSIS – ROXAS, ORIENTAL MINDORO (JUNE 4 to JULY 31, 2023)

| Source | Station No. | Station Identification | Classification | Current Beneficial Usage | WQG | Date of Sampling | | |
|------------------------------------|-------------|------------------------|----------------|--|--------|------------------|---------------|---------------|
| | | | | | | June 4, 2023 | June 18, 2023 | July 31, 2023 |
| Roxas Bay, Roxas, Oriental Mindoro | 1 | Dalahican | Class SB | Swimming, fishing, with household near the beach front | 2 mg/L | <1 mg/L | <1 mg/L | 7 mg/L |
| | 2 | Dangay | Class SB | Swimming, fishing, household area | 2 mg/L | <1 mg/L | 12 mg/L | 2 mg/L |
| | 3 | Paclasan | Class SB | Swimming, fishing, household area | 2 mg/L | 5 mg/L | 23 mg/L | <1 mg/L |
| | 4 | San Isidro | Class SB | Swimming, fishing, household area | 2 mg/L | <1 mg/L | 1 mg/L | 2 mg/L |

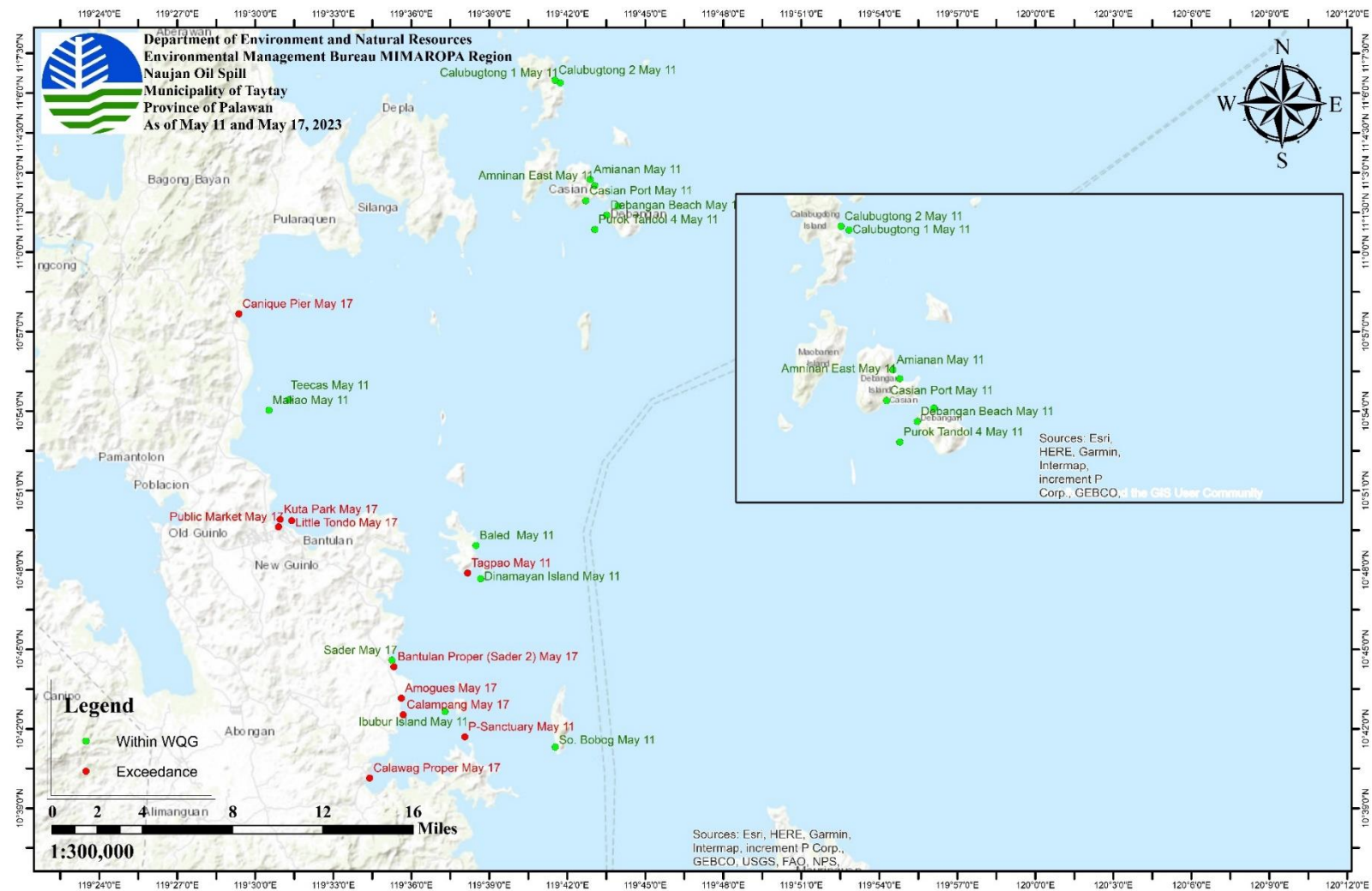
SAMPLING STATIONS AND RESULTS OF ANALYSIS – SAN TEODORO, ORIENTAL MINDORO



SAMPLING STATIONS AND RESULTS OF ANALYSIS – SAN TEODORO, ORIENTAL MINDORO (MARCH 16 TO AUGUST 23, 2023)

| Source | Station No. | Station Identification | Classification | Current Beneficial Usage | WQG | Date of Sampling | | | | | | | |
|--|-------------|---|----------------|--------------------------|--------|------------------|----------------|----------------|----------------|---------------|---------------|---------------|---------------|
| | | | | | | March 16, 2023 | March 24, 2023 | March 31, 2023 | April 18, 2023 | June 22, 2023 | July 13, 2023 | July 26, 2023 | Aug. 23, 2023 |
| Coastline of San Teodoro, Oriental Mindoro | 1 | Punta Ilag Fish Sanctuary | Class SA | Fish sanctuary | 1 mg/L | 2 mg/L | 5 mg/L | 3 mg/L | 4 mg/L | 3 mg/L | 7 mg/L | 8 mg/L | 3 mg/L |
| | 2 | Between Tamayuan Reef and Bulaso Fish Sanctuary (MPA) | Class SA | Fish sanctuary | 1 mg/L | 3 mg/L | 4 mg/L | 9 mg/L | 3 mg/L | 4 mg/L | 6 mg/L | 3 mg/L | 1 mg/L |

SAMPLING STATIONS AND RESULTS OF ANALYSIS – TAYTAY, PALAWAN



SAMPLING STATIONS AND RESULTS OF ANALYSIS – TAYTAY, PALAWAN (MARCH 11 TO APRIL 14, 2023)

| Source | Station No. | Station Identification | Classification | WQG | Date of Sampling | | | | | | | | | | | | |
|------------------------------|-------------|------------------------|----------------|--------|------------------|----------------|----------------|----------------|----------------|----------------|----------------|----------------|----------------|----------------|----------------|----------------|----------------|
| | | | | | March 11, 2023 | March 13, 2023 | March 16, 2023 | March 17, 2023 | March 22, 2023 | March 23, 2023 | March 24, 2023 | March 27, 2023 | March 28, 2023 | March 29, 2023 | March 31, 2023 | April 13, 2023 | April 14, 2023 |
| Pamantolon, Taytay, Palawan | 1 | Teecas | Class SA | 1 mg/L | 31 mg/L | - | - | - | - | 11 mg/L | - | - | - | - | - | - | 2 mg/L |
| | 2 | Maliao | Class SC | 3 mg/L | 2 mg/L | - | - | - | - | 24 mg/L | - | - | - | - | - | - | 4 mg/L |
| Casian, Taytay, Palawan | 1 | Casian Port | Class SB | 2 mg/L | 2 mg/L | - | - | - | 51 mg/L | - | - | - | 67 mg/L | - | 38 mg/L | - | 3 mg/L |
| | 2 | Amianan | Class SB | 2 mg/L | 18 mg/L | - | - | - | 8 mg/L | - | - | - | 36 mg/L | - | 50 mg/L | - | 3 mg/L |
| | 3 | Amninan East | Class SB | 2 mg/L | 22 mg/L | - | - | - | 36 mg/L | - | - | - | 40 mg/L | - | 24 mg/L | - | 2 mg/L |
| | 4 | Calubugtong 1 | Class SB | 2 mg/L | - | - | - | - | 15 mg/L | - | - | - | - | - | - | - | 8 mg/L |
| | 5 | Calubugtong 2 | Class SB | 2 mg/L | - | - | - | - | 10 mg/L | - | - | - | - | - | - | - | 4 mg/L |
| Brgy. Biton, Taytay, Palawan | 1 | Tagpao | Class SB | 2 mg/L | - | 18 mg/L | - | - | 31 mg/L | - | 5 mg/L | - | - | - | - | - | 5 mg/L |
| | 2 | Baled | Class SB | 2 mg/L | - | 13 mg/L | - | - | 17 mg/L | - | - | - | - | - | - | - | 7 mg/L |
| | 3 | Dinamayan Island | Class SB | 2 mg/L | - | 40 mg/L | - | - | 5 mg/L | - | 22 mg/L | - | - | - | - | - | 9 mg/L |
| Brgy. Bantulan, | 1 | Sader | Class SC | 3 mg/L | - | 43 mg/L | - | 28 mg/L | - | - | 7 mg/L | - | 43 mg/L | - | - | 3 mg/L | - |

| | | | | | | | | | | | | | | | | | |
|----------------------------------|---|---------------------------|----------|--------|---------|---------|--------|---------|---------|---------|---------|---------|---------|---------|---------|--------|--------|
| Taytay, Palawan | 2 | Sader 2 (Bantulan Proper) | Class SC | 3 mg/L | - | 13 mg/L | - | 14 mg/L | - | - | 14 mg/L | - | - | 40 mg/L | - | 3 mg/L | - |
| Brgy. Calawag, Taytay, Palawan | 1 | Amogues | Class SB | 2 mg/L | - | 3 mg/L | - | 2 mg/L | - | - | 5 mg/L | - | 39 mg/L | - | - | 7 mg/L | - |
| | 2 | Calampang | Class SC | 3 mg/L | - | 6 mg/L | - | 6 mg/L | - | - | 9 mg/L | - | 35 mg/L | - | - | 4 mg/L | - |
| | 3 | Calawag Proper | Class SC | 3 mg/L | - | 3 mg/L | - | 3 mg/L | - | - | 12 mg/L | - | 22 mg/L | - | - | 4 mg/L | - |
| | 4 | Amogues Deepwell | | | - | - | - | - | - | - | 23 mg/L | - | - | - | - | - | - |
| Brgy. Baras, Taytay, Palawan | 1 | Ibubur Island | Class SD | 5 mg/L | - | - | 2 mg/L | - | 5 mg/L | - | 33 mg/L | - | - | - | - | - | 6 mg/L |
| | 2 | P-Sanctuary | Class SA | 1 mg/L | - | - | 4 mg/L | - | 11 mg/L | - | 33 mg/L | - | - | - | - | - | 7 mg/L |
| | 3 | So. Bobog | Class SB | 2 mg/L | - | - | - | - | - | - | 26 mg/L | - | - | - | - | - | 9 mg/L |
| Brgy. Poblacion, Taytay, Palawan | 1 | Little Tondo | Class SB | 2 mg/L | - | - | 3 mg/L | - | - | 30 mg/L | - | - | - | 32 mg/L | - | 4 mg/L | - |
| | 2 | Public Market | Class SB | 2 mg/L | - | - | 3 mg/L | - | - | 23 mg/L | - | - | - | 16 mg/L | - | 2 mg/L | - |
| | 3 | Kuta Park | Class SB | 2 mg/L | - | - | - | 20 mg/L | - | 49 mg/L | - | - | - | 22 mg/L | - | 3 mg/L | - |
| Debangon, Taytay, Palawan | 1 | Purok Tandol 1 | Class SB | 2 mg/L | - | - | - | - | 17 mg/L | - | - | - | - | - | 62 mg/L | - | 7 mg/L |
| | 2 | Purok Tandol 4 | Class SB | 2 mg/L | - | - | - | - | 41 mg/L | - | - | - | - | - | 43 mg/L | - | 3 mg/L |
| | 3 | Debangon Beach | Class SB | 2 mg/L | - | - | - | - | 9 mg/L | - | - | - | - | - | 17 mg/L | - | 4 mg/L |
| Pularaquen, Palawan | 1 | Canique Pier | Class SB | 2 mg/L | 12 mg/L | - | - | - | - | - | - | 31 mg/L | - | - | - | 2 mg/L | - |

SAMPLING STATIONS AND RESULTS OF ANALYSIS – TAYTAY, PALAWAN (APRIL 18 TO MAY 17, 2023)

| Source | Station No. | Station Identification | Classification | WQG | Date of Sampling | | | | | | |
|---------------------------------|-------------|---------------------------|----------------|--------|------------------|----------------|----------------|----------------|--------------|--------------|--------------|
| | | | | | April 18, 2023 | April 19, 2023 | April 26, 2023 | April 27, 2023 | May 04, 2023 | May 11, 2023 | May 17, 2023 |
| Pamantolon, Taytay, Palawan | 1 | Teecas | Class SA | 1 mg/L | - | 3 mg/L | - | 1 mg/L | 5 mg/L | 1 mg/L | - |
| | 2 | Maliao | Class SC | 3 mg/L | - | 3 mg/L | - | 5 mg/L | 34 mg/L | <1 mg/L | - |
| Casian, Taytay, Palawan | 1 | Casian Port | Class SB | 2 mg/L | - | 6 mg/L | - | 10 mg/L | - | <1 mg/L | - |
| | 2 | Amianan | Class SB | 2 mg/L | - | 4 mg/L | - | - | - | 2 mg/L | - |
| | 3 | Amninan East | Class SB | 2 mg/L | - | 4 mg/L | - | - | - | <1 mg/L | - |
| | 4 | Calubugtong 1 | Class SB | 2 mg/L | - | 2 mg/L | - | - | - | 1 mg/L | - |
| | 5 | Calubugtong 2 | Class SB | 2 mg/L | - | 4 mg/L | - | - | - | <1 mg/L | - |
| Brgy. Beton, Taytay, Palawan | 1 | Tagpao | Class SB | 2 mg/L | - | 5 mg/L | - | 6 mg/L | - | 3 mg/L | - |
| | 2 | Baled | Class SB | 2 mg/L | - | 7 mg/L | - | 5 mg/L | - | <1 mg/L | - |
| | 3 | Dinamayan Island | Class SB | 2 mg/L | - | 3 mg/L | - | 42 mg/L | 4 mg/L | <2 mg/L | - |
| Brgy. Bantulan, Taytay, Palawan | 1 | Sader | Class SC | 3 mg/L | 5 mg/L | - | <1 mg/L | - | - | 2 mg/L | 3 mg/L |
| | 2 | Sader 2 (Bantulan Proper) | Class SC | 3 mg/L | 2 mg/L | - | <1 mg/L | - | - | 2 mg/L | 6 mg/L |
| Brgy. Calawag, | 1 | Amogues | Class SB | 2 mg/L | 6 mg/L | - | 3 mg/L | - | - | <1 mg/L | 3 mg/L |
| | 2 | Calampang | Class SC | 3 mg/L | 3 mg/L | - | 2 mg/L | - | - | 2 mg/L | 4 mg/L |

| | | | | | | | | | | | |
|---|---|-------------------|----------|--------|--------|--------|---------|---------|---------|---------|--------|
| Taytay, Palawan | 3 | Calawag Proper | Class SC | 3 mg/L | 7 mg/L | - | <1 mg/L | - | - | <1 mg/L | 4 mg/L |
| Brgy. Baras, Taytay, Palawan | 1 | Ibubur Island | Class SD | 5 mg/L | - | 4 mg/L | - | 50 mg/L | 4 mg/L | 1 mg/L | - |
| | 2 | P-Sanctuary | Class SA | 1 mg/L | - | 6 mg/L | - | 4 mg/L | <1 mg/L | 30 mg/L | - |
| | 3 | So. Bobog | Class SB | 2 mg/L | - | 6 mg/L | - | 1 mg/L | 2 mg/L | 2 mg/L | - |
| Brgy. Poblacion, Taytay, Palawan | 1 | Little Tondo | Class SB | 2 mg/L | 4 mg/L | - | 4 mg/L | - | 3 mg/L | <1 mg/L | 3 mg/L |
| | 2 | Public Market | Class SB | 2 mg/L | 2 mg/L | - | 3 mg/L | - | 2 mg/L | <1 mg/L | 4 mg/L |
| | 3 | Kuta Park | Class SB | 2 mg/L | 3 mg/L | - | 2 mg/L | - | 2 mg/L | 2 mg/L | 9 mg/L |
| Debangon, Taytay, Palawan | 1 | Purok Tandel 1 | Class SB | 2 mg/L | - | 5 mg/L | - | - | - | <1 mg/L | - |
| | 2 | Purok Tandel 4 | Class SB | 2 mg/L | - | 3 mg/L | - | - | - | 2 mg/L | - |
| | 3 | Debangon Beach | Class SB | 2 mg/L | - | 3 mg/L | - | 11 mg/L | - | 2 mg/L | - |
| Pularaquen, Palawan | 1 | Canique Pier | Class SB | 2 mg/L | 1 mg/L | - | 1 mg/L | - | 1 mg/L | <1 mg/L | 4 mg/L |

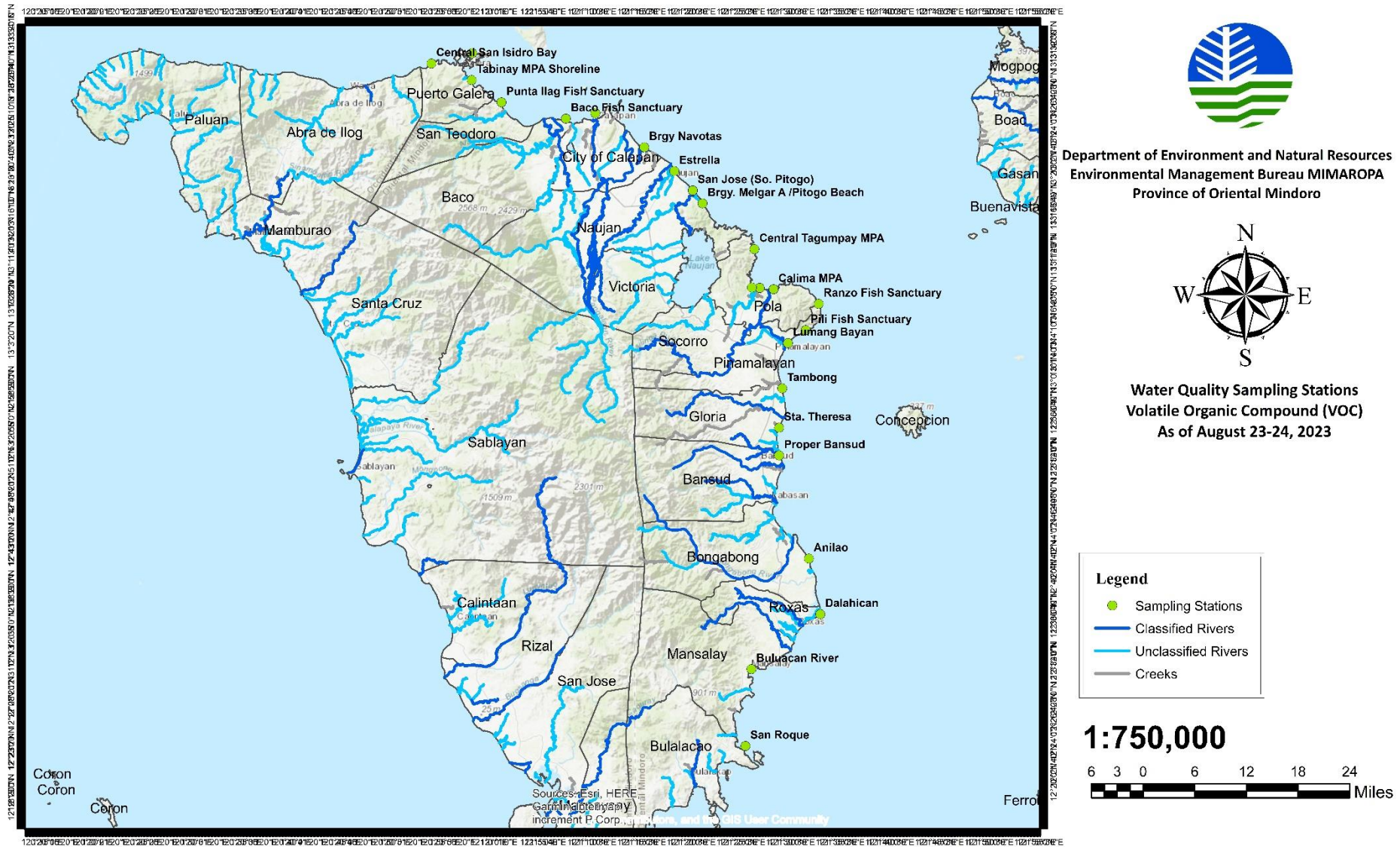
RESULTS OF VOLATILE ORGANIC COMPOUNDS IN WATER AS OF 23-24 AUGUST 2023

| PROVINCE | LOCATION | SOURCE OF WATER | SAMPLE IDENTIFICATION | PARAMETERS (mg/L) | | | |
|------------------|-------------|-----------------|---------------------------------------|-------------------|---------|--------------|---------|
| | | | | BENZENE | TOLUENE | ETHYLBENZENE | XYLENES |
| ORIENTAL MINDORO | BULALACAO | SEAWATER | STN 1. SAN ROQUE | < 0.005 | < 0.005 | < 0.001 | < 0.005 |
| | MANSALAY | | STN 2. BULUACAN RIVER | < 0.005 | < 0.005 | < 0.001 | < 0.005 |
| | ROXAS | | STN 3. DALAHICAN | < 0.005 | < 0.005 | < 0.001 | < 0.005 |
| | BONGABONG | | STN 4. ANILAO (MPA) | < 0.005 | < 0.005 | < 0.001 | < 0.005 |
| | BANSUD | | STN 5. BANSUD PROPER | < 0.005 | < 0.005 | < 0.001 | < 0.005 |
| | GLORIA | | STN 6. STA. THERESA FISH SANCTUARY | < 0.005 | < 0.005 | < 0.001 | < 0.005 |
| | | | STN 7. TAMBONG FISHERY RESERVE | < 0.005 | < 0.005 | < 0.001 | < 0.005 |
| | PINAMALAYAN | | STN 8. LUMANGBAYAN SHORELINE | < 0.005 | < 0.005 | < 0.001 | < 0.005 |
| | | | STN 9. PILI FISH SANCTUARY | < 0.005 | < 0.005 | < 0.001 | < 0.005 |
| | | | STN 10. RANZO FISH SANCTUARY | < 0.005 | < 0.005 | < 0.001 | < 0.005 |
| | POLA | | STN 11. CALIMA MPA | < 0.005 | < 0.005 | < 0.001 | < 0.005 |
| | | | STN 12. POLACAY BEACH | < 0.005 | < 0.005 | < 0.001 | < 0.005 |
| | | | STN 13. CASILIGAN RIVER ESTUARY | < 0.005 | < 0.005 | < 0.001 | < 0.005 |
| | | | STN 14. CENTRAL TAGUMPAY MPA | < 0.005 | < 0.005 | < 0.001 | < 0.005 |
| | NAUJAN | | STN 15. BRGY. MELGAR A (PITOGO BEACH) | < 0.005 | < 0.005 | < 0.001 | < 0.005 |

| | | | | | | | |
|--|---------------|--|---|---------|---------|---------|---------|
| | | | STN 16. SAN JOSE (PITOGO BEACH) | < 0.005 | < 0.005 | < 0.001 | < 0.005 |
| | | | STN 17. ESTRELLA STATION | < 0.005 | < 0.005 | < 0.001 | < 0.005 |
| | CALAPAN CITY | | STN 18. BRGY. NAVOTAS | < 0.005 | < 0.005 | < 0.001 | < 0.005 |
| | | | STN 19. CALERO-SALONG & CENTRAL REEF | < 0.005 | < 0.005 | < 0.001 | < 0.005 |
| | BACO | | STN 20. BACO FISH SANTUARY | < 0.005 | < 0.005 | < 0.001 | < 0.005 |
| | SAN TEODORO | | STN 21. PUNTA ILAG FISH SANCTUARY (MPA) | < 0.005 | < 0.005 | < 0.001 | < 0.005 |
| | PUERTO GALERA | | STN 22. TABINAY MPA SHORELINE | < 0.005 | < 0.005 | < 0.001 | < 0.005 |
| | | | STN 23. SMALL LALAGUNA SHORELINE | < 0.005 | < 0.005 | < 0.001 | < 0.005 |
| | | | STN 24. CENTRAL SAN ISIDRO BAY | < 0.005 | < 0.005 | < 0.001 | < 0.005 |

Attached are the Laboratory results of Volatile Organic Compound in water.

MAP OF VOLATILE ORGANIC COMPOUNDS IN WATER AS OF 23-24 AUGUST 2023



RESULTS OF VOLATILE ORGANIC COMPOUNDS IN WATER LAST 28-29 MARCH 2023

| PROVINCE | LOCATION | SOURCE OF WATER | SAMPLE IDENTIFICATION | PARAMETERS (mg/L) | | | |
|------------------|-------------|-----------------|--------------------------|-------------------|---------|--------------|---------|
| | | | | BENZENE | TOLUENE | ETHYLBENZENE | XYLENES |
| ORIENTAL MINDORO | NAUJAN | GROUNDWATER | MELGAR A | < 0.005 | < 0.005 | < 0.005 | < 0.005 |
| | | RIVER WATER | BULUACAN RIVER | < 0.005 | < 0.005 | < 0.005 | < 0.005 |
| | | RIVER WATER | MAG ASAWANG TUBIG | < 0.005 | < 0.005 | < 0.005 | < 0.005 |
| | | SEAWATER | MASAGUING FISH SANCTUARY | < 0.005 | < 0.005 | < 0.005 | < 0.005 |
| | POLA | GROUNDWATER | CALIMA | < 0.005 | < 0.005 | < 0.005 | < 0.005 |
| | | GROUNDWATER | MISONG | < 0.005 | < 0.005 | < 0.005 | < 0.005 |
| | | RIVER WATER | CASILIGAN RIVER | < 0.005 | < 0.005 | < 0.005 | < 0.005 |
| | | RIVER WATER | PULA RIVER | < 0.005 | < 0.005 | < 0.005 | < 0.005 |
| | | SEAWATER | POLACAY | < 0.005 | < 0.005 | < 0.005 | < 0.005 |
| | PINAMALAYAN | GROUNDWATER | MARFRANCISCO | < 0.005 | < 0.005 | < 0.005 | < 0.005 |
| | | RIVER WATER | PINAMALAYAN RIVER | < 0.005 | < 0.005 | < 0.005 | < 0.005 |
| | | SEAWATER | RANZO FISH SANCTUARY | < 0.005 | < 0.005 | < 0.005 | < 0.005 |

Attached are the Laboratory results of Volatile Organic Compound in water.

MAP OF VOLATILE ORGANIC COMPOUNDS IN WATER LAST 28-29 MARCH 2023

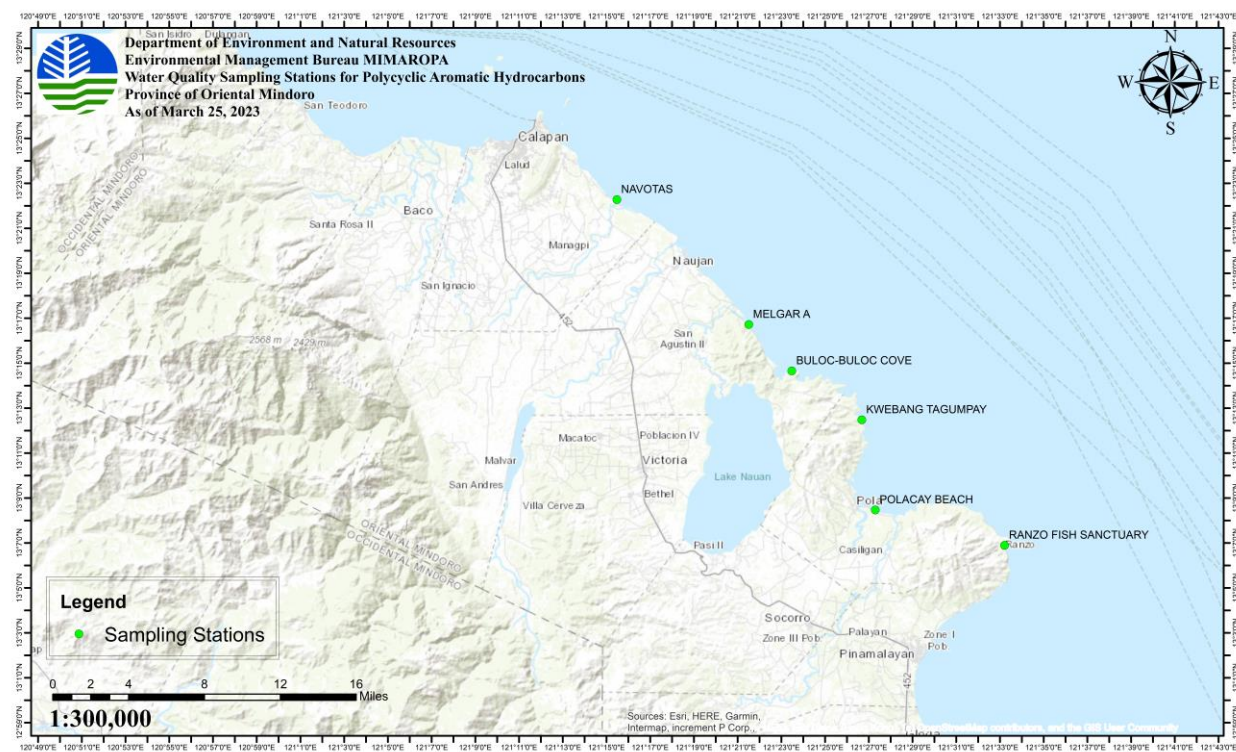


RESULTS OF POLYCYCLIC AROMATIC HYDROCARBONS IN WATER AS OF 25 MARCH 2023

| Province: Oriental Mindoro Source of Water: Marine Water | | | | | | | |
|---|-----------------------|-------------------------------|-------------------|-------------------------|----------------------|-----------------|--|
| Parameters (µg/L) | Calapan Bay - Navotas | Naujan – Buloc-Buloc Cove MPA | Naujan – Melgar A | Pola – Kwebang Tagumpay | Pola – Polacay Beach | Gloria - Balete | Pinamalayan Bay – Ranzo Fish Sanctuary |
| Acenaphthene | < 0.009 | < 0.009 | < 0.009 | < 0.009 | < 0.009 | < 0.009 | < 0.009 |
| Acenaphthylene | < 0.009 | < 0.009 | < 0.009 | < 0.009 | < 0.009 | < 0.009 | < 0.009 |
| Anthracene | < 0.009 | < 0.009 | < 0.009 | < 0.009 | < 0.009 | < 0.009 | < 0.009 |
| Benzo(a)anthracene | < 0.009 | < 0.009 | < 0.009 | < 0.009 | < 0.009 | < 0.009 | < 0.009 |
| Benzo(a)pyrene | < 0.009 | < 0.009 | < 0.009 | < 0.009 | < 0.009 | < 0.009 | < 0.009 |
| Benzo(b)fluoranthene | < 0.009 | < 0.009 | < 0.009 | < 0.009 | < 0.009 | < 0.009 | < 0.009 |
| Benzo(ghi)perylene | < 0.009 | < 0.009 | < 0.009 | < 0.009 | < 0.009 | < 0.009 | < 0.009 |
| Benzo(k)fluoranthene | < 0.009 | < 0.009 | < 0.009 | < 0.009 | < 0.009 | < 0.009 | < 0.009 |
| Chrysene | < 0.009 | < 0.009 | < 0.009 | < 0.009 | < 0.009 | < 0.009 | < 0.009 |
| Dibenzo(a,h)anthracene | < 0.009 | < 0.009 | < 0.009 | < 0.009 | < 0.009 | < 0.009 | < 0.009 |
| Fluoranthene | < 0.009 | < 0.009 | < 0.009 | < 0.009 | < 0.009 | < 0.009 | 0.062 |
| Fluorene | < 0.009 | < 0.009 | < 0.009 | < 0.009 | < 0.009 | < 0.009 | < 0.009 |
| Indeno(1,2,3-cd)pyrene | < 0.009 | < 0.009 | < 0.009 | < 0.009 | < 0.009 | < 0.009 | < 0.009 |
| Naphthalene | 0.109 | 0.085 | 0.066 | 0.067 | 0.060 | 0.064 | 0.044 |
| Phenanthrene | 0.012 | 0.011 | < 0.009 | < 0.009 | < 0.009 | < 0.009 | 0.021 |
| Pyrene | < 0.009 | < 0.009 | < 0.009 | < 0.009 | < 0.009 | < 0.009 | 0.104 |

Attached are the Laboratory results of Polycyclic Aromatic Hydrocarbons in water.

MAP OF POLYCYCLIC AROMATIC HYDROCARBONS IN WATER AS OF 25 MARCH 2023



AIR QUALITY MONITORING

| PROVINCE | CITY/ MUNICIPALITY | NO. OF SAMPLING STATIONS | | | | | | | | | DATE OF LAST SAMPLING CONDUCTED |
|---------------------|-----------------------|--|---------------------------------|----------|--|---------------------|----------|--|--------------------------------|----------|---|
| | | TOTAL SAMPLING STATIONS IN THE CITY/MUN. | H ₂ S (1) IN-SITU | | TOTAL SAMPLING STATIONS IN THE CITY/MUN. | TVOC (2) IN-SITU | | TOTAL SAMPLING STATIONS IN THE CITY/MUN. | VOCs (Lab Results from CRL) | | |
| | | | NOT DETECTED | DETECTED | | NOT DETECTED | DETECTED | | NOT DETECTED | DETECTED | |
| ORIENTAL MINDORO | CALAPAN CITY | 1 | 0 | 1 | 1 | 0 | 1 | 0 | 0 | 0 | H ₂ S and TVOC: 25 March 2023 |
| ORIENTAL MINDORO | NAUJAN | 1 | 0 | 1 | 1 | 0 | 1 | 0 | 0 | 0 | H ₂ S and TVOC: 25 March 2023 |
| ORIENTAL MINDORO | POLA | 4 | 0 | 4 | 7 | 0 | 7 | 4 | 4 | 0 | H ₂ S: 17 and 24 March 2023; TVOC: 20 April 2023; VOC: 9-10 March 2023 |
| ORIENTAL MINDORO | PINAMALAYAN | 3 | 0 | 3 | 3 | 0 | 3 | 0 | 0 | 0 | H ₂ S and TVOC: 23 March 2023 |
| | Total | 9 | 0 | 9 | 12 | 0 | 12 | 4 | 4 | 0 | |

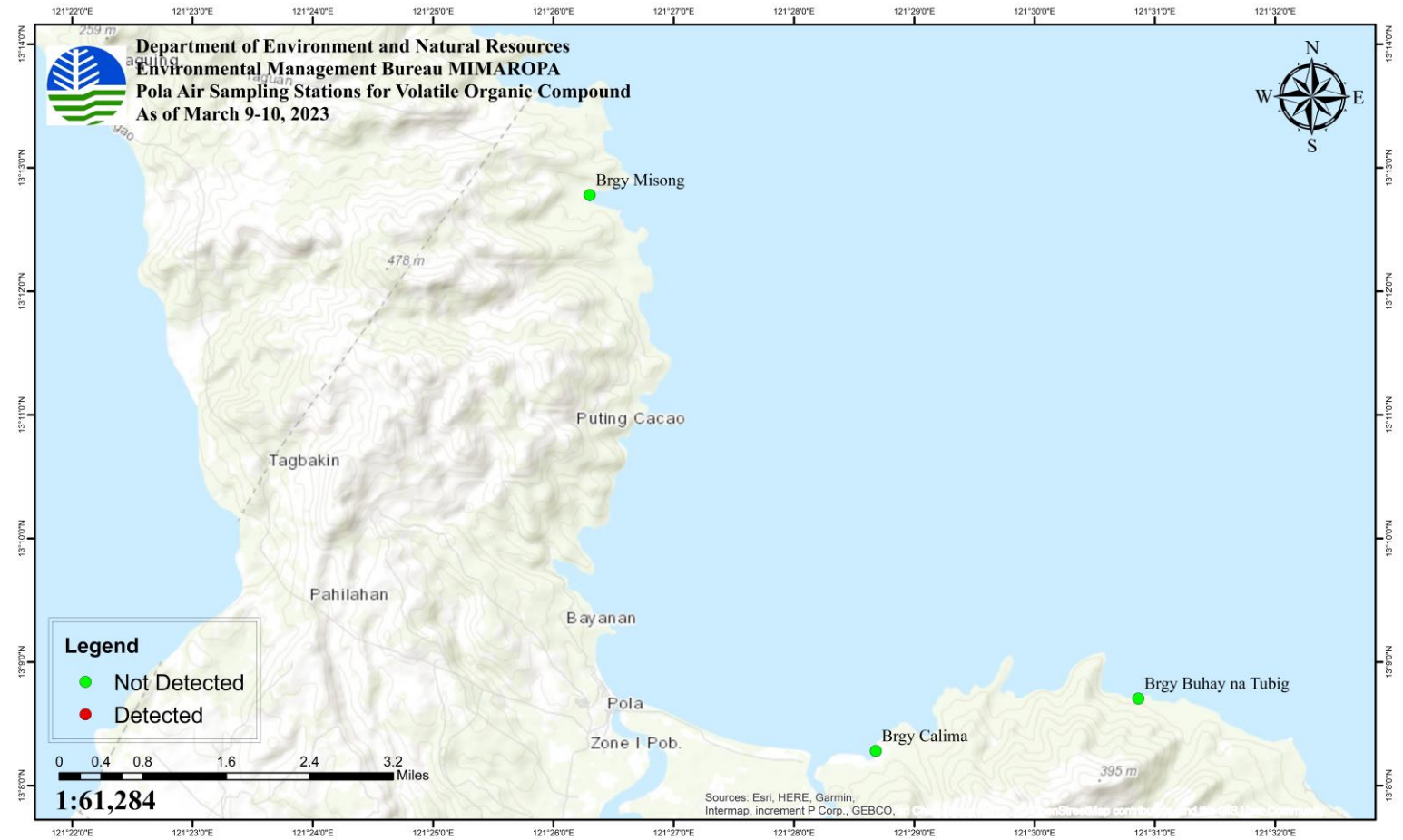
- Note:
1. While H2S were detected in the abovementioned sampling locations, the results did not exceed the W.H.O. Standards.
 2. Based on the in-situ sampling, Total Volatile Organic Compounds (TVOC) was detected in the absence of EMB Standards.

Results of Volatile Organic Compounds (VOCs) on March 9-10, 2023 Sampling

| Sources | Benzene | Ethyl Benzene | m,p-Xylene | o-Xylene | Toluene |
|---|----------------|--------------------------|-------------------|-----------------|----------------|
| Brgy. Misong (P00136674-02) | ND | ND | ND | ND | ND |
| Brgy. Buhay na Tubig (P00136674-04) | ND | ND | ND | ND | ND |
| Brgy. Calima (P00136674-06) | ND | ND | ND | ND | ND |
| Brgy. Buhay na Tubig (P00136674-08) | ND | ND | ND | ND | ND |

Note: **ND** means **NOT DETECTED** by the method used. No traces of analytes detected from the sample analyzed and the sample collected only represents the source during the time of collection. Samples were collected by CRL and analyzed by ASSET Inc. Laboratories.

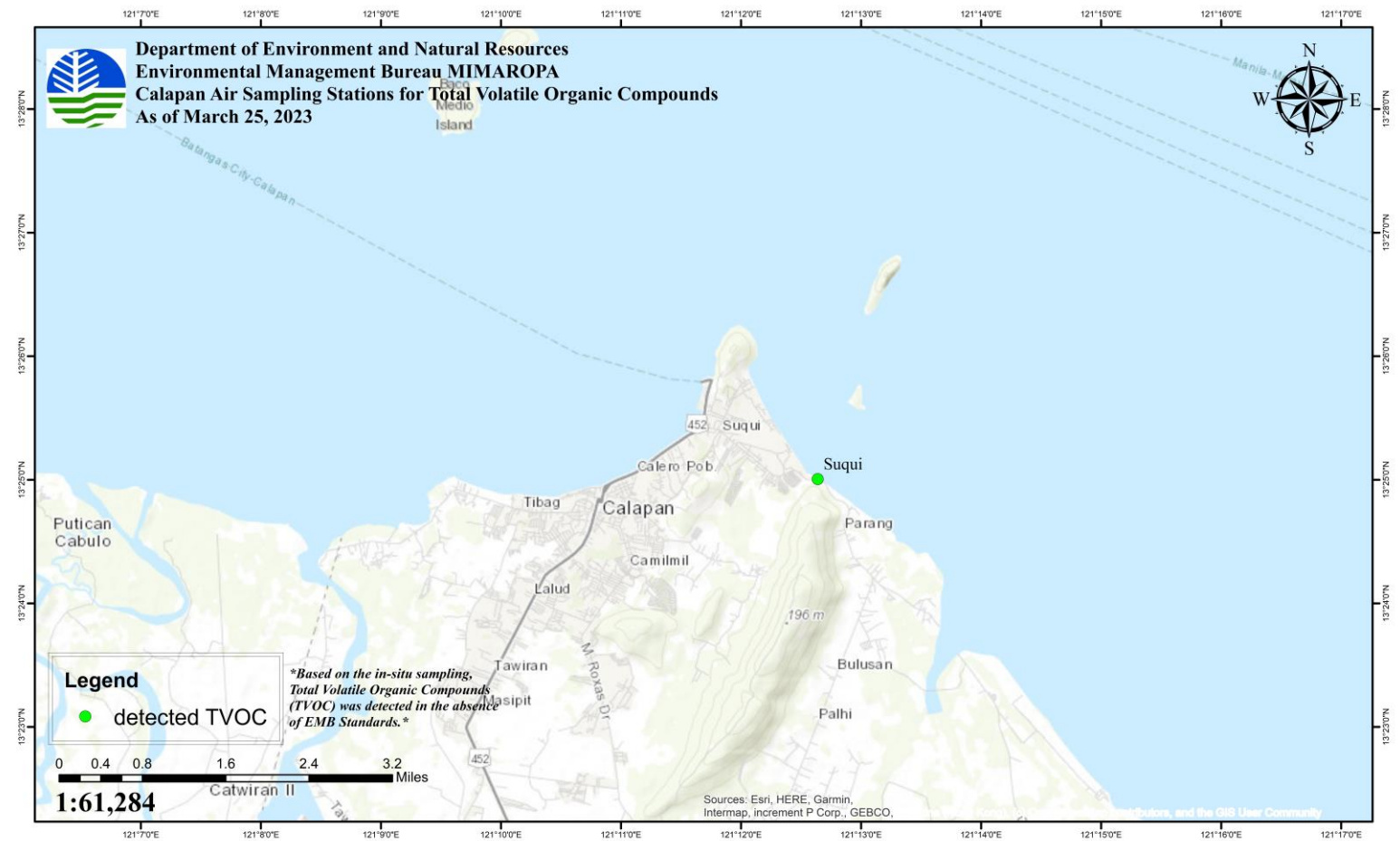
MAP OF VOLATILE ORGANIC COMPOUND IN POLA, ORIENTAL MINDORO (MARCH 9 TO 10, 2023)



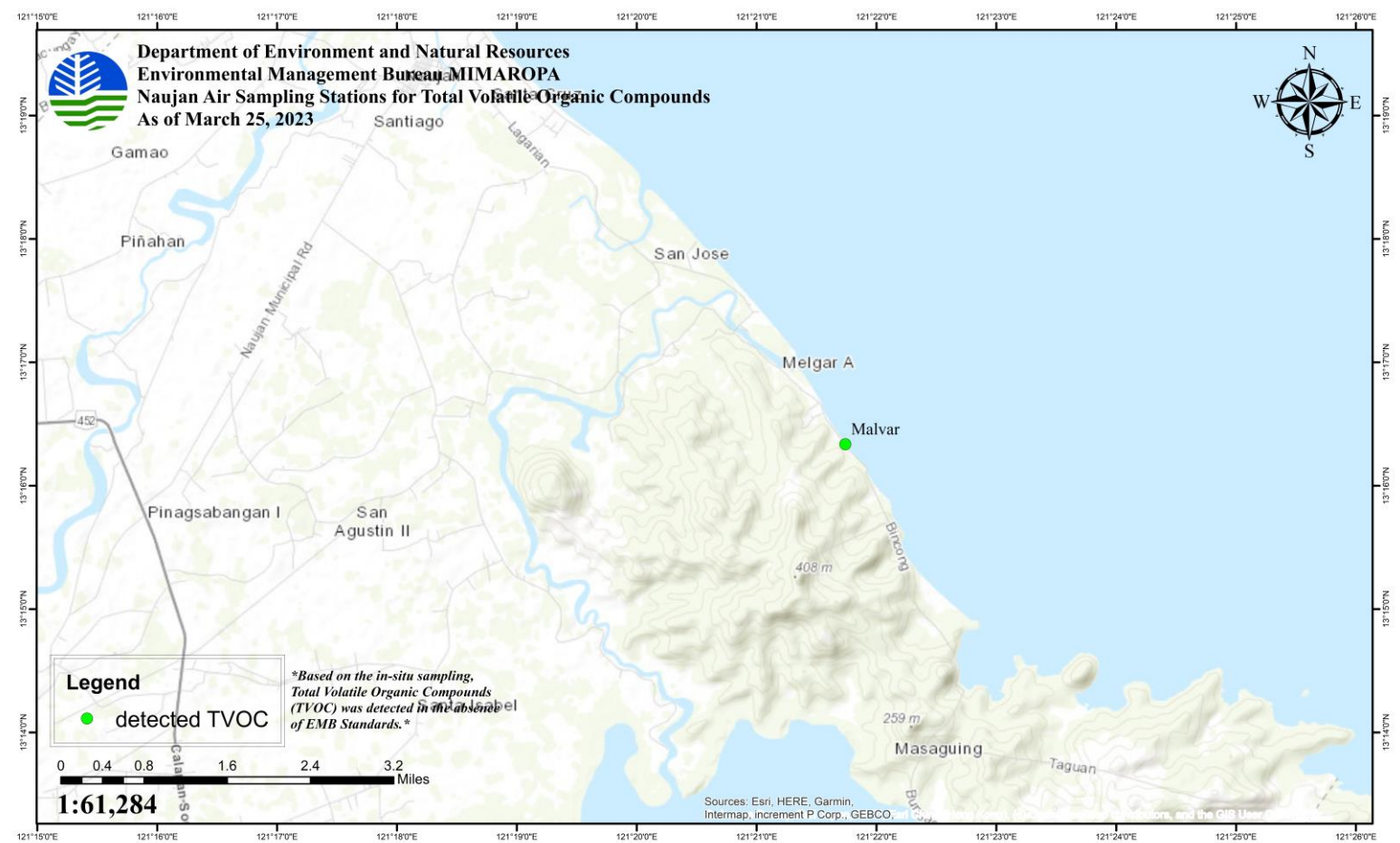
Results of Total Volatile Organic Compounds (TVOCs) on March 15 to April 20, 2023 Sampling

| PROVINCE | SOURCE (Municipality/City) | LOCATION (Barangay) | TVOC (mg/m ³) | DATE OF SAMPLING |
|------------------|-------------------------------|-------------------------------|------------------------------|------------------|
| ORIENTAL MINDORO | POLA | BRGY. CALIMA | 0.015 | 15 March 2023 |
| | | | 0.046 | 16 March 2023 |
| | | | 0.017 | 17 March 2023 |
| | | | 0.024 | 24 March 2023 |
| | | | 0.046 | 20 April 2023 |
| | | BRGY. MISONG | 0.011 | 16 March 2023 |
| | | | 0.018 | 17 March 2023 |
| | | | 0.023 | 24 March 2023 |
| | | | 0.011 | 20 April 2023 |
| | | BRGY. BATUHAN – POLACAY BEACH | 0.024 | 24 March 2023 |
| | | | 0.018 | 20 April 2023 |
| | | BRGY. TAGUMPAY | 0.018 | 16 March 2023 |
| | | | 0.013 | 17 March 2023 |
| | | BRGY. TAGUMPAY – CUEBA | 0.022 | 20 April 2023 |
| | | BRGY. TAGUMPAY – CENTRAL | 0.026 | 20 April 2023 |
| | | BRGY. TUGUIHAN | 0.015 | 20 April 2023 |
| | | BRGY. BUHAY NA TUBIG | 0.011 | 20 April 2023 |
| | NAUJAN | BRGY. MALVAR | 0.014 | 25 March 2023 |
| | PINAMALAYAN | BRGY. PARAISO | 0.011 | 23 March 2023 |
| | | BRGY. GINHAWA | 0.023 | 23 March 2023 |
| | | BRGY. BANILAD | 0.024 | 23 March 2023 |
| | CALAPAN | BRGY. SUQUI | 0.022 | 25 March 2023 |

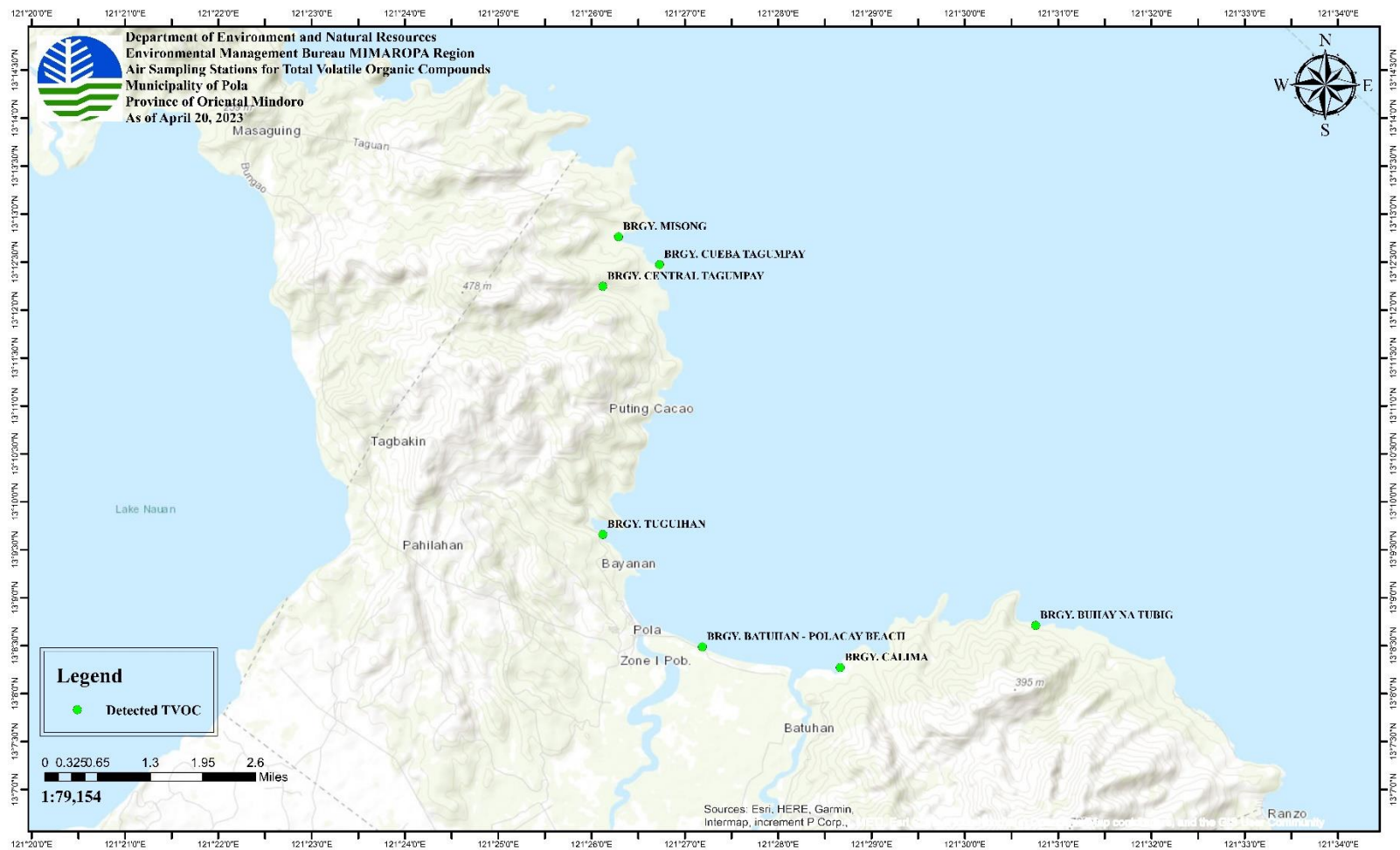
MAP OF TOTAL VOLATILE ORGANIC COMPOUND IN CALAPAN CITY, ORIENTAL MINDORO (MARCH 25, 2023)



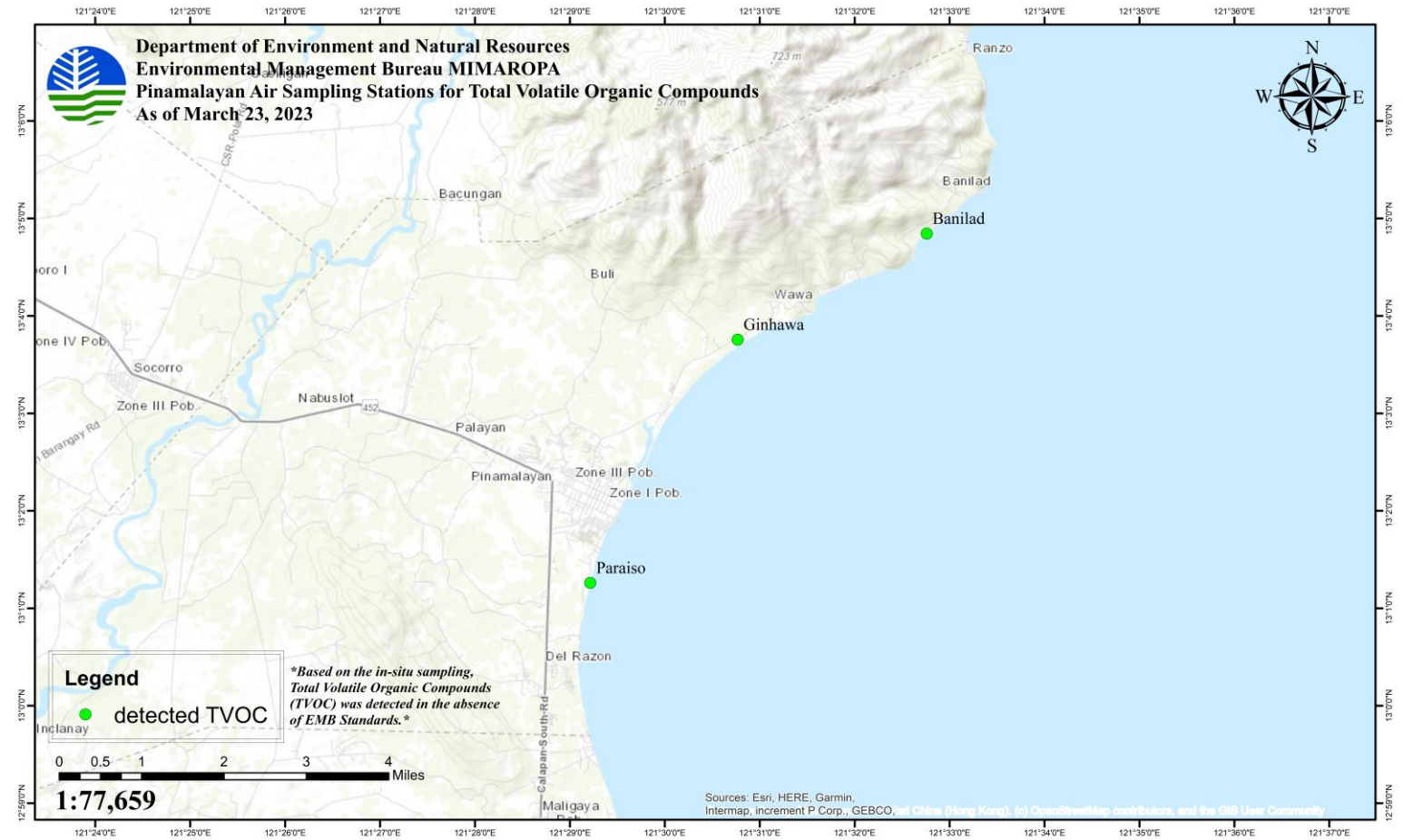
MAP OF TOTAL VOLATILE ORGANIC COMPOUND IN NAUJAN, ORIENTAL MINDORO (MARCH 25, 2023)



MAP OF TOTAL VOLATILE ORGANIC COMPOUND IN POLA, ORIENTAL MINDORO (APRIL 20, 2023)



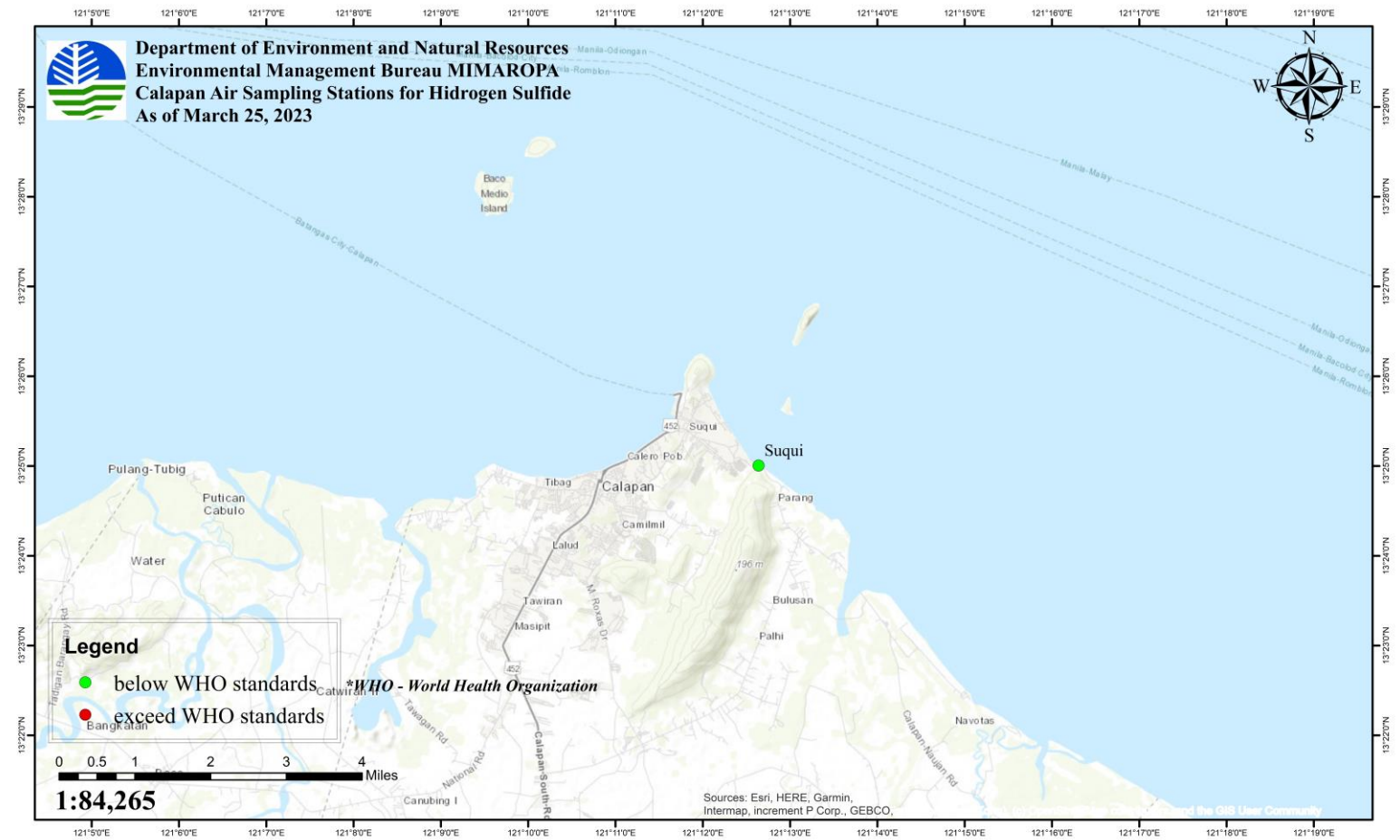
MAP OF TOTAL VOLATILE ORGANIC COMPOUND IN PINAMALAYAN, ORIENTAL MINDORO (MARCH 23, 2023)



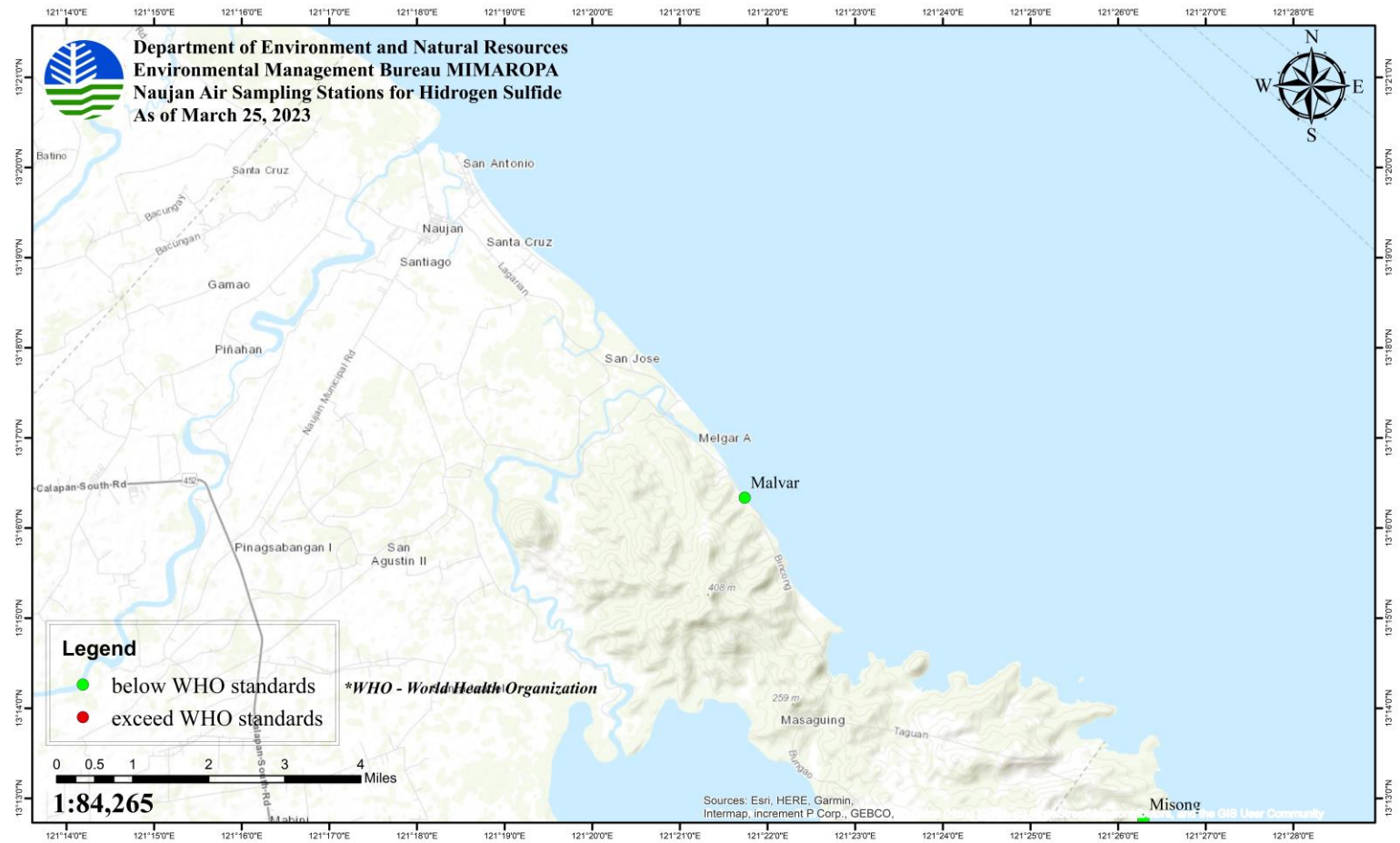
Results of Hydrogen Sulfide (H₂S) on March 15-25, 2023 Sampling

| PROVINCE | SOURCE (Municipality/City) | LOCATION (Barangay) | H ₂ S (ppm) | DATE OF SAMPLING |
|------------------|-------------------------------|------------------------|---------------------------|------------------|
| ORIENTAL MINDORO | POLA | BRGY. CALIMA | 0.03 | 15 March 2023 |
| | | | 0.03 | 16 March 2023 |
| | | | 0.03 | 17 March 2023 |
| | | | 0.01 | 24 March 2023 |
| | | BRGY. MISONG | 0.04 | 16 March 2023 |
| | | | 0.04 | 17 March 2023 |
| | | | 0.01 | 24 March 2023 |
| | | BRGY. BATUHAN | 0.02 | 24 March 2023 |
| | | BRGY. TAGUMPAY | 0.02 | 16 March 2023 |
| | | | 0.02 | 17 March 2023 |
| | NAUJAN | BRGY. MALVAR | 0.04 | 25 March 2023 |
| | PINAMALAYAN | BRGY. PARAISO | 0.02 | 23 March 2023 |
| | PINAMALAYAN | BRGY. GINHAWA | 0.03 | 23 March 2023 |
| | PINAMALAYAN | BRGY. BANILAD | 0.05 | 23 March 2023 |
| | CALAPAN | BRGY. SUQUI | 0.02 | 25 March 2023 |

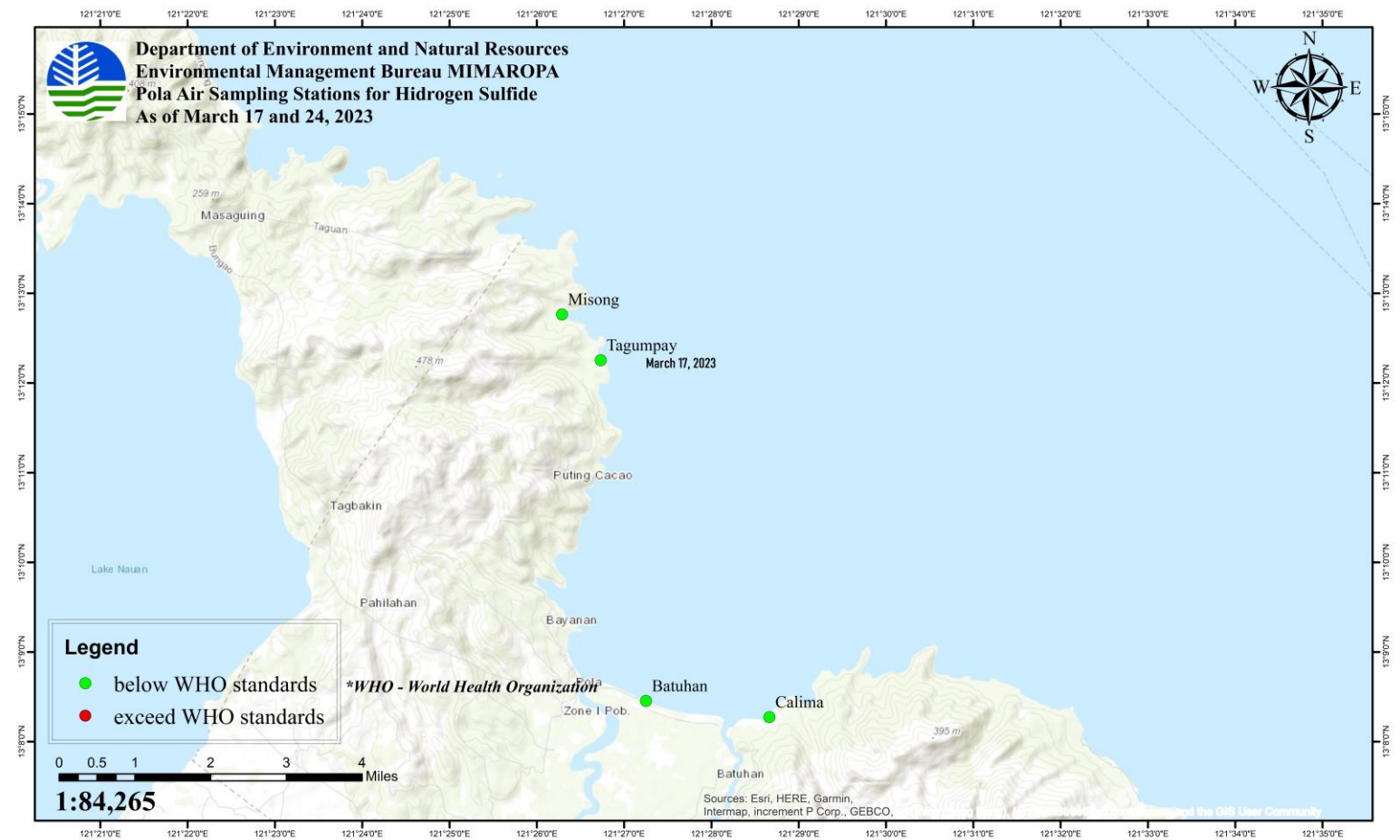
MAP OF HYDROGEN SULFIDE IN AIR SAMPLING OF CALAPAN CITY, ORIENTAL MINDORO (MARCH 25, 2023)



MAP OF HYDROGEN SULFIDE IN AIR SAMPLING OF NAUJAN, ORIENTAL MINDORO (MARCH 25, 2023)



MAP OF HYDROGEN SULFIDE IN AIR SAMPLING OF POLA, ORIENTAL MINDORO (MARCH 17 TO 24, 2023)



WASTE COLLECTION: as of 05 July 2023

| PROVINCE | CITY/ MUNICIPALITY | OIL WASTE | | OIL CONTAMINATED MATERIALS | | AGENCIES/ ORGANIZATIONS INVOLVED IN THE COLLECTION | % OF WASTE TREATED |
|---------------------|--------------------|----------------------------|------------------------|----------------------------|------------------------|---|-----------------------|
| | | CUM. VOLUME (IN LITERS) | CUM. WEIGHT (IN KG) | CUM. VOLUME (IN LITERS) | CUM. WEIGHT (IN KG) | | |
| ORIENTAL MINDORO | CALAPAN CITY | | | 30,504.90 | 27,454.41 | PCG, Harbour Insurance, local communities under Cash for Work Program (DSWD) | 54.26% |
| | NAUJAN | | | 9,580.20 | 8,622.18 | | 17.39% |
| | POLA | | | 367,835.40 | 331,051.86 | | 40.59% |
| | GLORIA | | | 1,457.40 | 1,311.66 | | 0% |
| | BONGABONG | | | 1,457.40 | 1,311.66 | | 0% |
| PALAWAN | TAYTAY | | | 1,249.20 | 1,124.28 | | 0% |
| TOTAL | | | | 412,084.50 | 370,876.05 | | |

Conversion:

1 Drum of Oil Contaminated Materials= 208.2 Liters

1 Liter of Oil Contaminated Materials= 0.9 kg

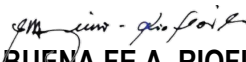
Tonner Bag = 729 Liters

Note:

1. The volume and weight were computed based on the conversion factors above.
2. The actual weight will be provided after hauling and treatment has been completed by the accredited service provider.

DONATIONS MONITORING

| DONOR | ITEMS DONATED / SERVICES | RECIPIENT CITY/ MUNICIPALITY | FOCAL PERSON |
|---|---|---------------------------------|--|
| DMCI Power Corp. | 50 pcs Drums | LGU - Pola | |
| Power One Corporation | 30pcs Drums | LGU - Pola | |
| Occidental Mindoro Consolidated Power Corp. | 15 pcs Drums | LGU - Pola | |
| Temasek Foundation through Filinvest Land Inc. | 70 Boxes (1000pcs/box) of KN95 mask 5 Boxes (1000pcs/box) of KN95 mask 2 Boxes (1000pcs/box) of KN95 mask | | Jennifer M. Cruz 8 March 23 Meynardo Axalan 9 March 2023 |
| Coral Bay Nickel Mining | 5 boxes of Absorbent Pads 11 pieces 3M 6200 Half Facepiece Respirator (Medium) 14 pairs 3M 6003 Organic Vapor/Acid Gas Cartridge 28 pieces 3M 5N11 Particulate Filter, N95 28 pieces 3M 501 Filter Retainer 14 pieces 3M 4750 Chemical Protective Coverall (Large) 15 boxes Nitrile Gloves 14 pairs Boots Chemical Resistant 3 pieces 3M 6800 Full Facepiece Respirator (Medium) | EMB – MIMAROPA Region | Atty. Alessa May V. Ismael (23 March 2023) |
| First Gen Corporation | 424 pcs Mini Boom Spill 132 pcs Mini Boom Spill 3 packs (100pcs/pack) Oil Sorbent Pads 3 rolls (49m x 0.96m x 0.35cm per roll) Oil Sorbent Rolls 4 pcs Open Top Drums 12 pcs Closed Top Drums 5 boxes (75pcs/box) Heavy-Duty Plastic Bag 45 boxes (20 pcs/box) N95 masks 10 boxes (50 pcs/box) N95 masks 40 pairs Nitrile Gloves 5 boxes (100 pcs/box) Latex Gloves, small 4 boxes (162 bars/box) Hand Soaps | | Meynardo Axalan 9 March 2023 |
| Prime Energy Resources Development | 54 pcs UN Drums (210 Liters) 10 tote tanks (1cum). | | |
| First Gen Corporation | Oil Spill Boom Reels (Tank Capacity: 300L) Oil Spill Boom (Inflatable booms in 2 reels) Dispersants 600 Liter | PCG Oriental Mindoro | |
| Water Environment Association of the Philippines, Inc. (WEAP) | FIFTY THOUSAND PESOS (PhP 50,000.00) Check | | |
| Optimal Laboratories, Inc. | Services (Oil and Grease Analysis) | | |
| Sun East Asia Corporation | 3 boxes (50pcs/box) Magic Fiber – Oil Absorbent | EMB – MIMAROPA Region | Engr. Buena Fe A. Rioflorido, Ashley Denise Adora L. Ignacio and Engr. Czes C. Bongco 03 May 2023 |


ENGR. BUENA FE A. RIOFLORIDO
Officer-In-Charge
Office of the Regional Director

