



August 26, 2022

MEMORANDUM

FOR : The Regional Executive Director
MIMAROPA Region

THRU : The Assistant Regional Director for Technical Services

FROM : The In Charge, PENR Officer
Oriental Mindoro

**SUBJECT : SUBMISSION OF ACCOMPLISHMENT REPORT ON SPA-
IPTs FOR THE MONTH OF AUGUST, 2022**



Submitted is the accomplishment report of CENRO Roxas on maintenance and protection of SPA-IPTs for the month of August, 2022.

Based on the report, the activities conducted include the maintenance of 800 IPTs, re-assessment of newly established IPTs, collection of 2.22 kgs. of Gmelina seeds and documentation of IPTs physiological developments. In addition, the reported 605 IPTs last March 2022, out of these, 237 IPTs were monitored and found that 95 IPTs fell due to weather conditions. There are 45 new IPTs identified in Brgy. Bukal, Bongabong, Oriental Mindoro.

For the financial status, a total of 303,444.00 or 76% of the allotted budget of 400,000.00 was obligated while 195,444.00 or 49% was already disbursed.

For information and record.


ALMA E. GIBE



DENR PENRO2208000060



Republic of the Philippines
Department of Environment and Natural Resources
MIMAROPA Region
Community Environment and Natural Resources Office
Camia St., San Mariano, Roxas, Oriental Mindoro
Contact No.: 0917 876 9985 / 0917 169 0232
VOIP: (043) 289-7118
Email: cenroroxas_orientalmin@yahoo.com

August 23, 2022

MEMORANDUM

FOR : The In Charge- PENR Officer
Suqui, Calapan City, Oriental Mindoro

FROM : The CENR Officer
San Mariano, Roxas Oriental Mindoro

SUBJECT : **SUBMISSION OF MONTHLY ACCOMPLISHMENT REPORT
OF SPA-IPTs FOR THE MONTH OF AUGUST 2022**

DENR-MIMAROPA REGION	
PROVINCIAL ENVIRONMENT AND NATURAL RESOURCES OFFICE	
ORIENTAL MINDORO	
PENR TRACKING NO.	
RECEIVED BY:	<i>[Signature]</i>
DATE:	AUG 25 2022
TIME:	

Submitted herewith is the monthly accomplishment report of this Office on SPA-IPTs for the month of August 2022.

For this month, the maintenance and protection activity conducted includes maintenance of IPTs, re-assessment of IPTs, seed collection and observation and documentation of IPTs physiological developments.

For the financial status, a total of Php 303, 444.00 or (76%) of the allotted budget Php 400,000.00 was obligated and a total of Php 195,444.00 was already disbursed.

Attached is the filled-out template of the report.

For information and record.

[Signature]
ENGR. CAESAR E. QUEBEC

GOAL: Ensured availability of quality planting materials (QPM) using genetically improved germplasm of priority forest tree species with support technology for plantation, reforestation and other purposes.
OBJECTIVES: Management of maintenance and protection of established seed sources

Programs/Project/ Activity (PPA)	Performance Indicators (Measures/ Documents)	PHYSICAL											Remarks/ Justification for those activities with low and high percentage accomp.
		TARGET	ACCOMPLISHMENT										
		Annual	Feb	March	April	May	June	July	August	To Date	% Accom. (to date)		
Maintenance of Individual Plus Trees (IPTs/Seed Production Areas (SPAs))													Continuous monitoring of SPA/IPTs
a. Maintenance of Individual Plus Trees (IPTs)	IPTs maintained (no.)	800	43	605	101	123	137	237	110	800	100.00%		In 605 IPTs reported last March 2022, 237 IPTs were monitored and found out that 95 IPTs felled due to weather condition
*pruning, weeding, application of fertilizer		800	43	605	101	123	137	237	110	800	100.00%		
*thinning/roughing													
*procurement of materials (fertilizer, tools, etc.)													
*hiring of Project Support Staff		1		1	0	0	0	0	0	1	100.00%		
*regular monitoring	monitoring of 11 clusters of IPTs (no.)	11			3	6	2	4	3	11	100.00%		
b. Re-assessment of Individual Plus Trees (IPTs)	new IPTs established (no.)									45			45 new IPTs were identified in Brgy. Butal, Or. Mindoro
*individual plus tree re-assessment/replacement			23	100		123	30			276			
re-tagging					101	123	30	123	0	377			
c. Seed Collection, Storage and Disposition	No. of seeds collected (kg)				2.89	4.17	1.5	8.91	2.22	19.69	%		
*seed collection					2.89	4.17	1.5	8.91	2.22	19.69			
*procurement of materials (seed containers, sacks etc)													
*hiring of laborer (collector/climber/processor)	laborer hired (no.)	2	2	0	0	0	0	0		2	100.00%		
d. Observation and Documentation of IPT Physiological developments	no. of IPTs	800			101	123	137		110				
	Phenology calendar report	12	1	1	1	1	1	1	1	7			

Prepared by:

CHUCKZEE B. NGABIT
Focal Person - ENGP, Clonal and IPTs

Reviewed by:

JOSH T. MONTESALVO
Chief, Conservation & Dev't. Section

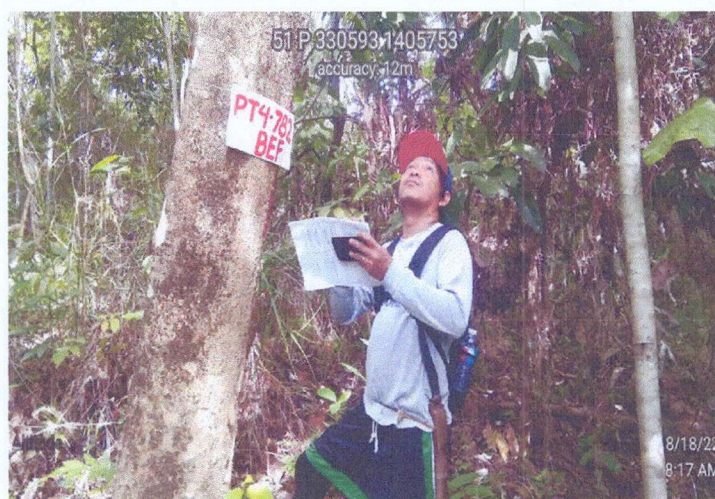
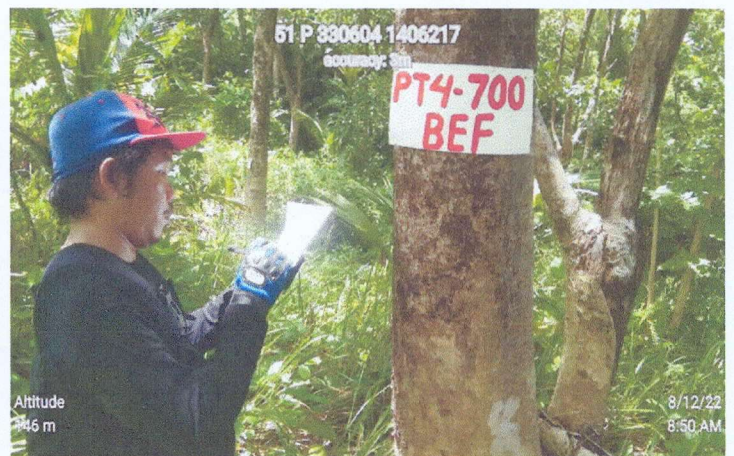
Attested by:

ENGR. CAESAR E. QUEBES
CENR Officer




Republic of the Philippines
Department of Environment and Natural Resources
MIMAROPA Region
Community Environment and Natural Resources Office
Camia St., San Mariano, Roxas, Oriental Mindoro
Contact No.: 0917 876 9985 / 0917 169 0232
VOIP: (043) 289-7118
Email: cenroroxas_orientalmin@yahoo.com

**GEO-TAGGED PHOTO OF ACTIVITIES TAKEN AT SEED PRODUCTION AREAS-
INDIVIDUAL PLUS TREES (SPA-IPTs) FOR THE MONTH OF AUGUST 2022**



SEED COLLECTION FOR THE MONTH OF AUGUST 2022

CENRO	LOCATION OF SPA/IPTs	CLASSIFICATION (SPA/IPTs)	PROVENANCE (TREE CODE)	SPECIES		SEEDS COLLECTED			DATE OF COLLECTI ON	STORAGE LOCATION AFTER SEED COLLECTION	REMARKS
				COMMON NAME	SCIENTIFIC NAME	Kg.	Seed Count per Kilo	Date			
CENRO Roxas	Bukal, Bongabong, Oriental Mindoro	IPTs	PT4-630-BEF	GMELINA	<i>Gmelina Arborea</i>	0.54 kg	864	August 23, 2022	August 8, 2022	Brgy. Bukal, Bongabong, Oriental Mindoro	Continuous monitoring of IPTs
	Bukal, Bongabong, Oriental Mindoro	IPTs	PT4-631-BEF	GMELINA	<i>Gmelina Arborea</i>	0.48 kg	768	August 23, 2022	August 8, 2022	Brgy. Bukal, Bongabong, Oriental Mindoro	
	Bukal, Bongabong, Oriental Mindoro	IPTs	PT4-632-BEF	GMELINA	<i>Gmelina Arborea</i>	0.72 kg	1,152	August 23, 2022	August 8, 2022	Brgy. Bukal, Bongabong, Oriental Mindoro	
	Bukal, Bongabong, Oriental Mindoro	IPTs	PT4-633-BEF	GMELINA	<i>Gmelina Arborea</i>	0.48 kg	768	August 23, 2022	August 8, 2022	Brgy. Bukal, Bongabong, Oriental Mindoro	
TOTAL:						2.22 kg	3,552				

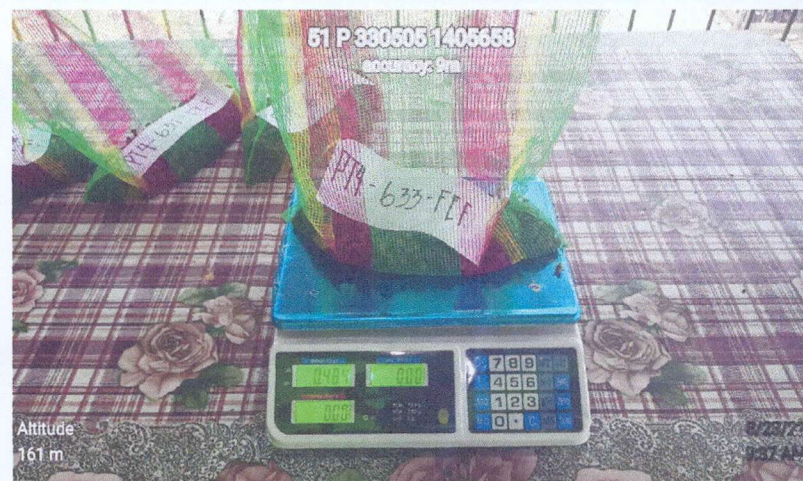
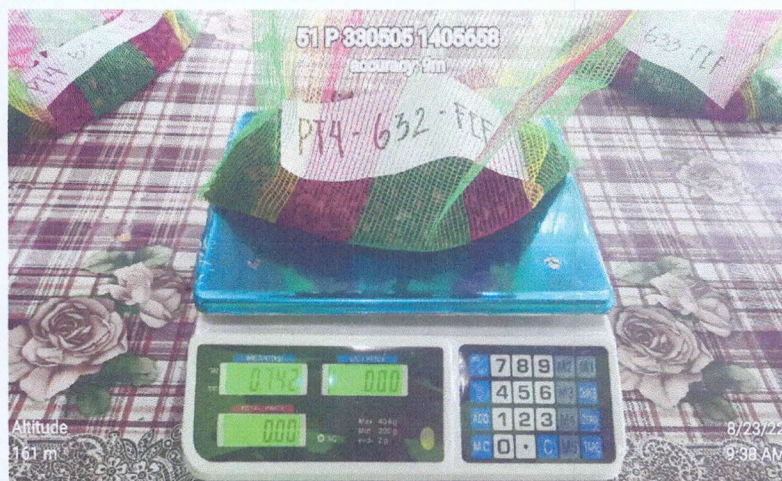
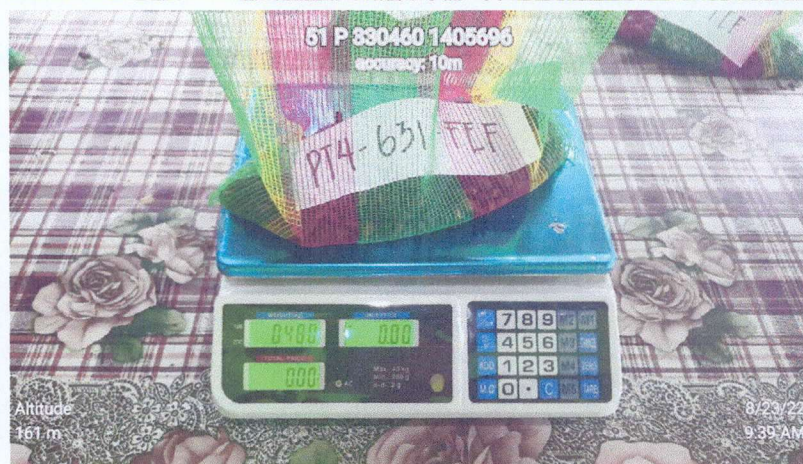
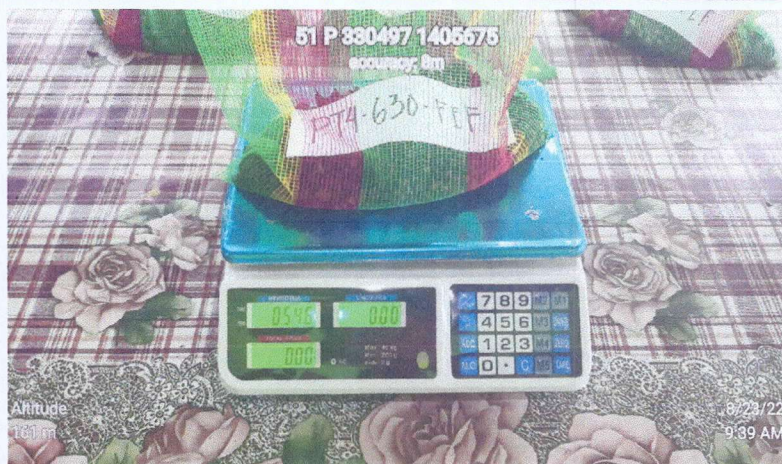
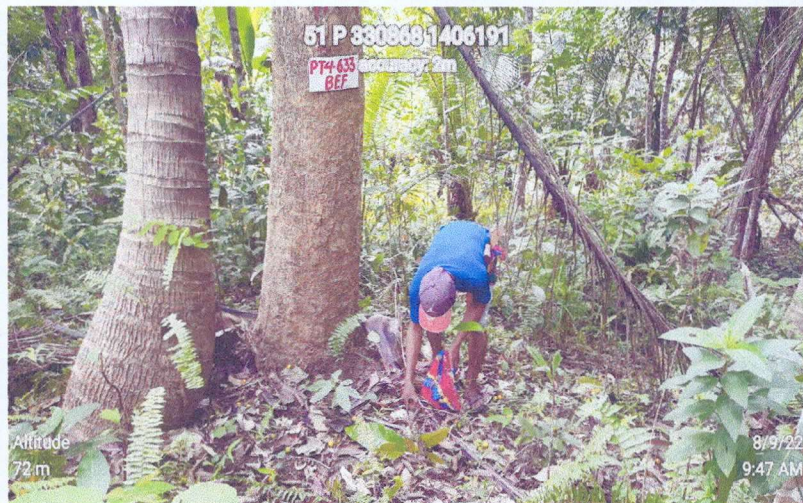
Prepared By: 
CHUCKLE B. NGABIT
Focal Person - ENGP, Clonal and IPTs

Reviewed by: 
JOSE T. MONTECALVO
Chief, Conservation & Dev't. Section

Attested by: 
ENGR. CAESAR E. QUEBEC
CENR Officer



**GEO-TAGGED PHOTO OF SEED COLLECTION AT SEED PRODUCTION AREAS-
INDIVIDUAL PLUS TREES (SPA-IPTs) FOR THE MONTH OF AUGUST 2022**



GOAL: Ensured availability of quality planting materials (QPM) using genetically improved germplasm of priority forest tree species with support technology for plantation, reforestation and other purposes.
OBJECTIVES: Management of maintenance and protection of established seed sources

Programs/Project/ Activity (PPA)	Performance Indicators (Measures/ Documents)	Name of Species	Province	PHYSICAL				FINANCIAL (P=000)						Remarks/ Justification for those activities with low and high percentage accomp.		
				Annual Target	Accomplishment	(% Accomp. Vs Annual)	Allotment	Released	%Amt. Released/ Allotment	Obligation		Disbursement			% Bud. Util. Rate (BUR) Obligation/ Disbursement/ Obligation	
Maintenance of Individual Plus Trees (IPTs/Seed Production Areas (SPAs)				800	800	100.00%	400,000	191,484	48%	3,960.00	303,444.00	3,960	195,444.00	76%	64%	Continuous monitoring of SPA/IPTs
a. Maintenance of Individual Plus Trees (IPTs)	IPTs maintained (no.)			800	800	100.00%										
*pruning, weeding, application of fertilizer				800	800	100.00%										
*thinning/roughing																
*procurement of materials (fertilizer, tools, etc.)																
*hiring of Project Support Staff				1	1	100.00%										
*regular monitoring	monitoring of 11 clusters of IPTs (no.)			11	11	100.00%										
b. Re-assessment of Individual Plus Trees (IPTs)																
*individual plus tree re-assessment/replacement re-lagging					44											
c. Seed Collection, Storage and Disposition																
*seed collection	No. of seeds collected (kg)				377											
*procurement of materials (seed containers, sacks etc)					19.69											
*hiring of laborer (collector/climber/processor)				2	2	100.00%										
d. Observation and Documentation of IPT Physiological Developments				800												
	no. of IPTs			800												
	Phenology calendar report			12	7											

Prepared by:

CHUCKLEE B. NGABIT
Focal Person - ENGF, Clonal and IPTs

Reviewed by:

JOSE T. MONTECAYO
Chief, Conservation & Devel. Section

Approved by:

ENGR. CASARES E. QUEBRADO
CENR Officer

LIST OF IDENTIFIED IPTs AS OF AUGUST 2022

NO.	SPECIES	LOCATION	IPT.NO	TECHNICAL DESCRIPTION		STATUS		REMARKS
				X	Y	GOOD	NOT GOOD	
1	Guijo	Brgy. Bukal, Bongabong, Or. Mdo	PT4-801-FEF	331026	1406064	✓		
2	Guijo	Brgy. Bukal, Bongabong, Or. Mdo	PT4-802-FEF	331002	1406063	✓		
3	Malapapaya	Brgy. Bukal, Bongabong, Or. Mdo	PT4-803-FEF	330994	1406059	✓		
4	Guijo	Brgy. Bukal, Bongabong, Or. Mdo	PT4-804-FEF	330966	1406051	✓		
5	Malapapaya	Brgy. Bukal, Bongabong, Or. Mdo	PT4-805-FEF	330947	1406040	✓		
6	Narra	Brgy. Bukal, Bongabong, Or. Mdo	PT4-806-FEF	330943	1406034	✓		
7	Guijo	Brgy. Bukal, Bongabong, Or. Mdo	PT4-807-FEF	330990	1406028	✓		
8	Guijo	Brgy. Bukal, Bongabong, Or. Mdo	PT4-808-FEF	331026	1406034	✓		
9	Guijo	Brgy. Bukal, Bongabong, Or. Mdo	PT4-809-FEF	331023	1406041	✓		
10	Malapapaya	Brgy. Bukal, Bongabong, Or. Mdo	PT4-810-FEF	331037	1406043	✓		
11	Guijo	Brgy. Bukal, Bongabong, Or. Mdo	PT4-811-FEF	331041	1406048	✓		
12	Malapapaya	Brgy. Bukal, Bongabong, Or. Mdo	PT4-812-FEF	331045	1406072	✓		
13	Batino	Brgy. Bukal, Bongabong, Or. Mdo	PT4-813-FEF	331055	1406075	✓		
14	Antipolo	Brgy. Bukal, Bongabong, Or. Mdo	PT4-814-FEF	331087	1406022	✓		
15	Antipolo	Brgy. Bukal, Bongabong, Or. Mdo	PT4-815-FEF	331075	1406009	✓		
16	Mahogany	Brgy. Bukal, Bongabong, Or. Mdo	PT4-816-FEF	331075	1406007	✓		
17	Kupang	Brgy. Bukal, Bongabong, Or. Mdo	PT4-817-FEF	331100	1405995	✓		
18	Pagsahingin	Brgy. Bukal, Bongabong, Or. Mdo	PT4-818-FEF	331113	1405981	✓		
19	Antipolo	Brgy. Bukal, Bongabong, Or. Mdo	PT4-819-FEF	330997	1406004	✓		
20	Antipolo	Brgy. Bukal, Bongabong, Or. Mdo	PT4-820-FEF	330985	1406020	✓		
21	Malapapaya	Brgy. Bukal, Bongabong, Or. Mdo	PT4-821-FEF	330981	1406011	✓		
22	Antipolo	Brgy. Bukal, Bongabong, Or. Mdo	PT4-822-FEF	330976	1405974	✓		
23	Marang	Brgy. Bukal, Bongabong, Or. Mdo	PT4-23-FEF	330937	1405984	✓		
24	Antipolo	Brgy. Bukal, Bongabong, Or. Mdo	PT4-824-FEF	330932	1405982	✓		
25	Antipolo	Brgy. Bukal, Bongabong, Or. Mdo	PT4-825-FEF	330923	1405979	✓		
26	Antipolo	Brgy. Bukal, Bongabong, Or. Mdo	PT4-826-FEF	330967	1405926	✓		
27	Marang	Brgy. Bukal, Bongabong, Or. Mdo	PT4-827-FEF	330933	1405915	✓		
28	Fangisang Bayawa	Brgy. Bukal, Bongabong, Or. Mdo	PT4-828-FEF	330949	1405929	✓		
29	Talisay Gubat	Brgy. Bukal, Bongabong, Or. Mdo	PT4-829-FEF	330971	1405904	✓		
30	Antipolo	Brgy. Bukal, Bongabong, Or. Mdo	PT4-830-FEF	330945	1405911	✓		
31	Fangisang Bayawa	Brgy. Bukal, Bongabong, Or. Mdo	PT4-831-FEF	330943	1405910	✓		
32	Pagsahingin	Brgy. Bukal, Bongabong, Or. Mdo	PT4-832-FEF	330922	1405914	✓		
33	Fangisang Bayawa	Brgy. Bukal, Bongabong, Or. Mdo	PT4-833-FEF	330915	1405921	✓		
34	Bakan	Brgy. Bukal, Bongabong, Or. Mdo	PT4-834-FEF	330898	1405906	✓		
35	Pagsahingin	Brgy. Bukal, Bongabong, Or. Mdo	PT4-835-FEF	330903	1405905	✓		
36	Fangisang Bayawa	Brgy. Bukal, Bongabong, Or. Mdo	PT4-836-FEF	330921	1405891	✓		
37	Antipolo	Brgy. Bukal, Bongabong, Or. Mdo	PT4-837-FEF	330909	1405887	✓		
38	Pagsahingin	Brgy. Bukal, Bongabong, Or. Mdo	PT4-838-FEF	330891	1405894	✓		
39	Malapapaya	Brgy. Bukal, Bongabong, Or. Mdo	PT4-839-FEF	330880	1405905	✓		
40	Pagsahingin	Brgy. Bukal, Bongabong, Or. Mdo	PT4-840-FEF	330878	1405907	✓		
41	Bakan	Brgy. Bukal, Bongabong, Or. Mdo	PT4-841-FEF	330494	1405683	✓		
42	Malapapaya	Brgy. Bukal, Bongabong, Or. Mdo	PT4-842-FEF			✓		
43	Antipolo	Brgy. Bukal, Bongabong, Or. Mdo	PT4-843-FEF	330894	1405863	✓		
44	Mahogany	Brgy. Bukal, Bongabong, Or. Mdo	PT4-844-FEF	330915	1405843	✓		
45	Pagsahingin	Brgy. Bukal, Bongabong, Or. Mdo	PT4-845-FEF	330878	1405835	✓		

No.	Location of Seed Sources	IPT Number	Common Name	Scientific Name	LOCATION		Months CY 2022												Remarks
					X	Y	Jan	Feb	Mar	Apr	May	Jun	Jul	Aug	Sep	Oct	Nov	Dec	
56	Brgy. Bukal, Bongabong, Or. Mindoro	PT4-55-BEF	Gmelina	Gmelina arborea	330994	1405966												reported failed and rotten due to weather condition	
57	Brgy. Bukal, Bongabong, Or. Mindoro	PT4-57-BEF	Gmelina	Gmelina arborea	330972	1405935													
58	Brgy. Bukal, Bongabong, Or. Mindoro	PT4-58-BEF	Gmelina	Gmelina arborea	330984	1405931													
59	Brgy. Bukal, Bongabong, Or. Mindoro	PT4-59-BEF	Gmelina	Gmelina arborea	330972	1405933													
60	Brgy. Bukal, Bongabong, Or. Mindoro	PT4-60-BEF	Gmelina	Gmelina arborea	330970	1405937												reported failed and rotten due to weather condition	
61	Brgy. Bukal, Bongabong, Or. Mindoro	PT4-61-BEF	Gmelina	Gmelina arborea	330953	1405926													
62	Brgy. Bukal, Bongabong, Or. Mindoro	PT4-62-BEF	Gmelina	Gmelina arborea	330942	1405937													
63	Brgy. Bukal, Bongabong, Or. Mindoro	PT4-63-BEF	Gmelina	Gmelina arborea	330971	1405948													
64	Brgy. Bukal, Bongabong, Or. Mindoro	PT4-64-BEF	Gmelina	Gmelina arborea	330940	1405967													
65	Brgy. Bukal, Bongabong, Or. Mindoro	PT4-65-BEF	Gmelina	Gmelina arborea	330926	1405980													
66	Brgy. Bukal, Bongabong, Or. Mindoro	PT4-66-BEF	Gmelina	Gmelina arborea	330935	1405960													
67	Brgy. Bukal, Bongabong, Or. Mindoro	PT4-67-BEF	Gmelina	Gmelina arborea	330923	1405960													
68	Brgy. Bukal, Bongabong, Or. Mindoro	PT4-68-BEF	Gmelina	Gmelina arborea	330923	1405948													
69	Brgy. Bukal, Bongabong, Or. Mindoro	PT4-69-BEF	Gmelina	Gmelina arborea	330906	1405957													
70	Brgy. Bukal, Bongabong, Or. Mindoro	PT4-70-BEF	Gmelina	Gmelina arborea	330936	1405985													
71	Brgy. Bukal, Bongabong, Or. Mindoro	PT4-71-BEF	Gmelina	Gmelina arborea	330920	1405991													
72	Brgy. Bukal, Bongabong, Or. Mindoro	PT4-72-BEF	Gmelina	Gmelina arborea	330895	1405988													
73	Brgy. Bukal, Bongabong, Or. Mindoro	PT4-73-BEF	Gmelina	Gmelina arborea	330894	1406001													
74	Brgy. Bukal, Bongabong, Or. Mindoro	PT4-74-BEF	Gmelina	Gmelina arborea	330897	1405998													
75	Brgy. Bukal, Bongabong, Or. Mindoro	PT4-75-BEF	Gmelina	Gmelina arborea	330911	1406009												reported failed and rotten due to weather condition	
76	Brgy. Bukal, Bongabong, Or. Mindoro	PT4-76-BEF	Gmelina	Gmelina arborea	330862	1405988												reported failed and rotten due to weather condition	
77	Brgy. Bukal, Bongabong, Or. Mindoro	PT4-77-BEF	Gmelina	Gmelina arborea	330864	1405995													
78	Brgy. Bukal, Bongabong, Or. Mindoro	PT4-78-BEF	Gmelina	Gmelina arborea	330865	1405990													
79	Brgy. Bukal, Bongabong, Or. Mindoro	PT4-79-BEF	Gmelina	Gmelina arborea	330834	1405955												reported failed and rotten due to weather condition	
80	Brgy. Bukal, Bongabong, Or. Mindoro	PT4-80-BEF	Gmelina	Gmelina arborea	330881	1405985													
81	Brgy. Bukal, Bongabong, Or. Mindoro	PT4-81-BEF	Gmelina	Gmelina arborea	330867	1405965													
82	Brgy. Bukal, Bongabong, Or. Mindoro	PT4-82-BEF	Gmelina	Gmelina arborea	330882	1405973													
83	Brgy. Bukal, Bongabong, Or. Mindoro	PT4-83-BEF	Gmelina	Gmelina arborea	330895	1405978													
84	Brgy. Bukal, Bongabong, Or. Mindoro	PT4-84-BEF	Gmelina	Gmelina arborea	330876	140560													
85	Brgy. Bukal, Bongabong, Or. Mindoro	PT4-85-BEF	Gmelina	Gmelina arborea	330867	1405938													
86	Brgy. Bukal, Bongabong, Or. Mindoro	PT4-86-BEF	Gmelina	Gmelina arborea	330907	1405933												reported failed and rotten due to weather condition	
87	Brgy. Bukal, Bongabong, Or. Mindoro	PT4-87-BEF	Gmelina	Gmelina arborea	330902	1405937													
88	Brgy. Bukal, Bongabong, Or. Mindoro	PT4-88-BEF	Gmelina	Gmelina arborea	330904	1405936													
89	Brgy. Bukal, Bongabong, Or. Mindoro	PT4-89-BEF	Gmelina	Gmelina arborea	330914	1405928													
90	Brgy. Bukal, Bongabong, Or. Mindoro	PT4-90-BEF	Gmelina	Gmelina arborea	330929	1405944													
91	Brgy. Bukal, Bongabong, Or. Mindoro	PT4-91-BEF	Gmelina	Gmelina arborea	330897	1405940													
92	Brgy. Bukal, Bongabong, Or. Mindoro	PT4-92-BEF	Gmelina	Gmelina arborea	330927	1405933													
93	Brgy. Bukal, Bongabong, Or. Mindoro	PT4-93-BEF	Gmelina	Gmelina arborea	330938	1405927													
94	Brgy. Bukal, Bongabong, Or. Mindoro	PT4-94-BEF	Gmelina	Gmelina arborea	330872	1405925													
95	Brgy. Bukal, Bongabong, Or. Mindoro	PT4-95-BEF	Gmelina	Gmelina arborea	330892	1405919													
96	Brgy. Bukal, Bongabong, Or. Mindoro	PT4-96-BEF	Gmelina	Gmelina arborea	330918	1405933													
97	Brgy. Bukal, Bongabong, Or. Mindoro	PT4-97-BEF	Gmelina	Gmelina arborea	330859	1405923													
98	Brgy. Bukal, Bongabong, Or. Mindoro	PT4-98-BEF	Gmelina	Gmelina arborea	330861	1405941													
99	Brgy. Bukal, Bongabong, Or. Mindoro	PT4-99-BEF	Gmelina	Gmelina arborea	330869	1405952													
100	Brgy. Bukal, Bongabong, Or. Mindoro	PT4-100-BEF	Gmelina	Gmelina arborea	330839	1405924													
101	Brgy. Bukal, Bongabong, Or. Mindoro	PT4-101-BEF	Gmelina	Gmelina arborea	330853	1405932													
102	Brgy. Bukal, Bongabong, Or. Mindoro	PT4-102-BEF	Gmelina	Gmelina arborea	330856	1405915													
103	Brgy. Bukal, Bongabong, Or. Mindoro	PT4-103-BEF	Gmelina	Gmelina arborea	330876	1405912													
104	Brgy. Bukal, Bongabong, Or. Mindoro	PT4-104-BEF	Gmelina	Gmelina arborea	330854	1405924													
105	Brgy. Bukal, Bongabong, Or. Mindoro	PT4-105-BEF	Gmelina	Gmelina arborea	330829	1405928													
106	Brgy. Bukal, Bongabong, Or. Mindoro	PT4-106-BEF	Gmelina	Gmelina arborea	330837	1405933													
107	Brgy. Bukal, Bongabong, Or. Mindoro	PT4-107-BEF	Gmelina	Gmelina arborea	330837	1405930													
108	Brgy. Bukal, Bongabong, Or. Mindoro	PT4-108-BEF	Gmelina	Gmelina arborea	330823	1405923													
109	Brgy. Bukal, Bongabong, Or. Mindoro	PT4-109-BEF	Gmelina	Gmelina arborea	330790	1405927													
110	Brgy. Bukal, Bongabong, Or. Mindoro	PT4-110-BEF	Gmelina	Gmelina arborea	330804	1405912													
111	Brgy. Bukal, Bongabong, Or. Mindoro	PT4-111-BEF	Gmelina	Gmelina arborea	330807	1405890													
112	Brgy. Bukal, Bongabong, Or. Mindoro	PT4-112-BEF	Gmelina	Gmelina arborea	330820	1405898													
113	Brgy. Bukal, Bongabong, Or. Mindoro	PT4-113-BEF	Gmelina	Gmelina arborea	330828	1405866													
114	Brgy. Bukal, Bongabong, Or. Mindoro	PT4-114-BEF	Gmelina	Gmelina arborea	330822	1405881													
115	Brgy. Bukal, Bongabong, Or. Mindoro	PT4-115-BEF	Gmelina	Gmelina arborea	330819	1405911													

No.	Location of Seed Sources	IPF Number	Common Name	Scientific Name	LOCATION		Months CY 2022												Remarks
					X	Y	Jan	Feb	Mar	Apr	May	Jun	Jul	Aug	Sep	Oct	Nov	Dec	
768	Brgy. Bukal, Bongabong, Or. Mindoro	PT4-768-BEF	Gmelina	<i>Gmelina arborea</i>	330701	1405651													
769	Brgy. Bukal, Bongabong, Or. Mindoro	PT4-769-BEF	Gmelina	<i>Gmelina arborea</i>	330698	1405650													
770	Brgy. Bukal, Bongabong, Or. Mindoro	PT4-770-BEF	Gmelina	<i>Gmelina arborea</i>	330716	1405638													
771	Brgy. Bukal, Bongabong, Or. Mindoro	PT4-771-BEF	Gmelina	<i>Gmelina arborea</i>	330708	1405620													
772	Brgy. Bukal, Bongabong, Or. Mindoro	PT4-772-BEF	Gmelina	<i>Gmelina arborea</i>	330711	1405629													
773	Brgy. Bukal, Bongabong, Or. Mindoro	PT4-773-BEF	Gmelina	<i>Gmelina arborea</i>	330719	1405624													
774	Brgy. Bukal, Bongabong, Or. Mindoro	PT4-774-BEF	Gmelina	<i>Gmelina arborea</i>	330712	1405600													
775	Brgy. Bukal, Bongabong, Or. Mindoro	PT4-775-BEF	Gmelina	<i>Gmelina arborea</i>	330722	1405602													
776	Brgy. Bukal, Bongabong, Or. Mindoro	PT4-776-BEF	Gmelina	<i>Gmelina arborea</i>	330698	1405605													
777	Brgy. Bukal, Bongabong, Or. Mindoro	PT4-777-BEF	Gmelina	<i>Gmelina arborea</i>	330690	140593													
778	Brgy. Bukal, Bongabong, Or. Mindoro	PT4-778-BEF	Gmelina	<i>Gmelina arborea</i>	330704	140578													
779	Brgy. Bukal, Bongabong, Or. Mindoro	PT4-779-BEF	Gmelina	<i>Gmelina arborea</i>	330694	1405591													
780	Brgy. Bukal, Bongabong, Or. Mindoro	PT4-780-BEF	Gmelina	<i>Gmelina arborea</i>															
781	Brgy. Bukal, Bongabong, Or. Mindoro	PT4-781-BEF	Gmelina	<i>Gmelina arborea</i>	330677	1405564													
CLUSTER XI: GMEILINA (PT4-782-BEF TO PT4-800-BEF) BRGY. BUKAL, BONGABONG - 0.13 HECTARES																			
782	Brgy. Bukal, Bongabong, Or. Mindoro	PT4-782-BEF	Gmelina	<i>Gmelina arborea</i>	330593	1405744													
783	Brgy. Bukal, Bongabong, Or. Mindoro	PT4-783-BEF	Gmelina	<i>Gmelina arborea</i>	330590	1405758													
784	Brgy. Bukal, Bongabong, Or. Mindoro	PT4-784-BEF	Gmelina	<i>Gmelina arborea</i>	330602	1405745													
785	Brgy. Bukal, Bongabong, Or. Mindoro	PT4-785-BEF	Gmelina	<i>Gmelina arborea</i>	330606	1405763													
786	Brgy. Bukal, Bongabong, Or. Mindoro	PT4-786-BEF	Gmelina	<i>Gmelina arborea</i>	330626	1405761													
787	Brgy. Bukal, Bongabong, Or. Mindoro	PT4-787-BEF	Gmelina	<i>Gmelina arborea</i>	330634	1405755													
788	Brgy. Bukal, Bongabong, Or. Mindoro	PT4-788-BEF	Gmelina	<i>Gmelina arborea</i>	330614	1405752													
789	Brgy. Bukal, Bongabong, Or. Mindoro	PT4-789-BEF	Gmelina	<i>Gmelina arborea</i>	330636	1405746													
790	Brgy. Bukal, Bongabong, Or. Mindoro	PT4-790-BEF	Gmelina	<i>Gmelina arborea</i>	330643	1405751													
791	Brgy. Bukal, Bongabong, Or. Mindoro	PT4-791-BEF	Gmelina	<i>Gmelina arborea</i>	330644	1405763													
792	Brgy. Bukal, Bongabong, Or. Mindoro	PT4-792-BEF	Gmelina	<i>Gmelina arborea</i>	330654	1405733													
793	Brgy. Bukal, Bongabong, Or. Mindoro	PT4-793-BEF	Gmelina	<i>Gmelina arborea</i>	330665	1405747													
794	Brgy. Bukal, Bongabong, Or. Mindoro	PT4-794-BEF	Gmelina	<i>Gmelina arborea</i>	330684	1405709													
795	Brgy. Bukal, Bongabong, Or. Mindoro	PT4-795-BEF	Gmelina	<i>Gmelina arborea</i>	330689	1405743													
796	Brgy. Bukal, Bongabong, Or. Mindoro	PT4-796-BEF	Gmelina	<i>Gmelina arborea</i>	330706	1405739													
797	Brgy. Bukal, Bongabong, Or. Mindoro	PT4-797-BEF	Gmelina	<i>Gmelina arborea</i>	330727	1405745													
798	Brgy. Bukal, Bongabong, Or. Mindoro	PT4-798-BEF	Gmelina	<i>Gmelina arborea</i>	330714	1405740													
799	Brgy. Bukal, Bongabong, Or. Mindoro	PT4-799-BEF	Gmelina	<i>Gmelina arborea</i>	330731	1405759													
800	Brgy. Bukal, Bongabong, Or. Mindoro	PT4-800-BEF	Gmelina	<i>Gmelina arborea</i>	330743	1405713													

LEGENDS:

Leaf Legends

Flower Legends

Fruit Development

Maturity Development

Felled and Rotten Legends

Prepared by:

CHUCKLEE B. NGABIT

Focal Person - ENGP, Clonal and IPFs

Reviewed by:

JOSE F. MONTECALVO

Chief, Conservation & Dev't. Section

Approved by:

ENGR. CESAR E. QUEBEC

ENR Officer