



Republic of the Philippines  
Department of Environment and Natural Resources  
**MIMAROPA Region**

**MEMORANDUM**

**FOR : ARLEIGH J. ADORABLE, CESO III**  
OIC-Assistant Secretary for Field Operations-Western Mindanao  
and Director, Forest Management Bureau in concurrent capacity

**FROM : THE REGIONAL EXECUTIVE DIRECTOR**

**SUBJECT : FORMULATION OF CBFM COMMUNITY RESOURCE  
MANAGEMENT FRAMEWORK AND FIVE YEAR WORK PLAN  
OF CBFM-PEOPLES ORGANIZATION [ CO-2023-104145]**

**DATE : JUL 18 2023**

This pertains to the vision, mission, goal and objective setting of the CBFMA Peoples Organization which is one of the component in the Community Resource Management Framework and Five Year Work Plan as reflected in their vision map. Annex H of FMB Technical Bulletin No. 20 first paragraph states that the "*Vision, Mission, Goal and Objectives (VMGO) provides a description what the CBFM-PO envision on its CBFMA area, forestlands, forest resources, the PO as a community and business organization, individual and collective enterprise, and support services within the community. It provides the direction on what the PO wants to achieve in the future*".

Review of the submitted CRMF of some POs disclosed that they envision to put infrastructures like *school buildings, bridges, roads, barangay hall, telecommunication tower (cellsites), housing project*, among others. Relative thereto, may we seek your advice, comments and recommendations on whether these infrastructures can be construed as support services within the community and whether these can be allowed or not since the CBFMA area is within forestland as per Article II, Section 4 of DENR Administrative Order No. 2004-29.

  
**LORMELYN E. CLAUDIO, CESO IV**



Department of Environment  
and Natural Resources  
MIMAROPA Region



Doc ID: 104145

CDD/PFMS/MPL/02/27/2023

PENRO – refers to the Provincial Environment and Natural Resources Office of the DENR.

Prior Vested Rights - Established claims, privileges, prerogatives, or ownership over land or natural resources which can be enforced before a court of law or appropriate administrative agency.

RED – refers to the Regional Executive Director of the DENR.

RENRO – Refers to the DENR office headed by the Regional Executive Director which is responsible for the coordination and implementation of all policies, regulations, programs and projects of the DENR in the Region.

Sustainable Development - as defined by the World Commission on Environment and Development, means meeting the needs and aspirations of the people without compromising the ability of future generations to meet theirs.

Sustainable Forest Management - the process of managing, developing, and utilizing forest lands and resources therein to achieve the production of desired products or services without impairing the inherent productivity of the forest, thereby ensuring a continuous flow of these products or services and without undesirable effects on the physical and social environment.

Watershed - land drained by a stream or fixed body of water and its tributaries having a common outlet for surface run-off.

## **ARTICLE II**

### **SCOPE, COVERAGE AND KEY PROGRAM PARTICIPANTS**

#### ***Section 4. Scope and Coverage.***

Subject to prior vested rights, Community-Based Forest Management Strategy (CBFMS) shall apply to all forest lands. The CBFMS integrates and unifies all people-oriented forestry programs, including but not limited to, the Integrated Social Forestry Program (ISFP), Upland Development Project (UDP), Forest Land Management Program (FLMP), Community Forestry Program (CFP), Low Income Upland Communities Project (LIUCP), Regional Resources Management Project (RRMP), Natural Resource Management Program (NRMP), Forestry Sector Project (FSP), and Coastal Environment Program (CEP).

Indigenous Cultural Communities (ICCs)/ Indigenous Peoples (IPs) whose claims to ancestral domains/lands have been recognized through Certificates of Ancestral Domain Claims (CADCs) or Certificates of Ancestral Land Claims (CALCs), or whose domains are recognized by themselves and neighboring communities, may, at their option, participate in the CBFM strategy.

#### ***Section 5. Qualifications of Participants.***

The principal participants in CBFMP shall be the local communities as represented by their organizations, herein referred to as People's Organizations (POs).



## ANNEX H

### VISION, MISSION, GOAL AND OBJECTIVES SETTING

Vision, Mission, Goal and Objectives (VMGO) provides a description what the CBFM-PO envision on its CBFMA area, forestlands, forest resources, the PO as a community and business organization, individual and collective enterprises, and support services within the community. It provides the direction on what the PO wants to achieve in the future.

#### 1. Vision Setting

**Vision** statements are short phrases or sentences that convey your community's hopes for the future. By developing a vision statement or statements, your organization clarifies the beliefs and governing principles of your organization, first for yourselves, and then for the greater community.

Vision statements should define how the PO sees itself in the next few years, or what image does it want to project in years to come/ what does it want to be as PO. These are certain characteristics that most vision statement have in common. In general, vision statements should be:

- Understood and shared by members of the community;
- Broad enough to include a diverse variety of local perspectives;
- Inspiring and uplifting to everyone involve in your effort; and
- Easy to communicate and easy to remember - Because it is easy to remember, it is easy for everyone in the organization to focus on the vision. When people focus on the vision, their daily activities are automatically directed towards achieving the vision.

A sample of vision statement is as follows:

*An organized organization within the CBFMA area with develop and flourish mountains and strong affiliated organization that protects the forest resources and with different alternative livelihoods as model of a developed area.*

#### 2. Mission Setting

**Mission** statement describes what the PO/community wants to achieve and why they want to achieve it. Missions are more concrete, and they are definitely more "action-oriented" than vision statements. It should define that the PO/community have ensure that their vision is met.

While they don't go into a lot of details, they should define at how the organization might fix the problems or reach their goals. Some general guiding principles about mission statements are as follows:

- Concise – while not as short as vision statements, mission statements generally still get their point across in one sentence;
- Outcome-oriented – mission statement explain the fundamental outcomes your organization is working to achieve; and
- Inclusive – while mission statements do make statements about your organization's key goals, it's very important that they do so in broad manner. Good mission statement are not limiting in the strategies or sectors of the community that may become involve in the project.

A sample of mission statement is as follows:

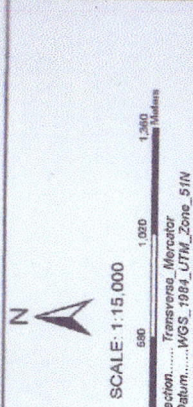
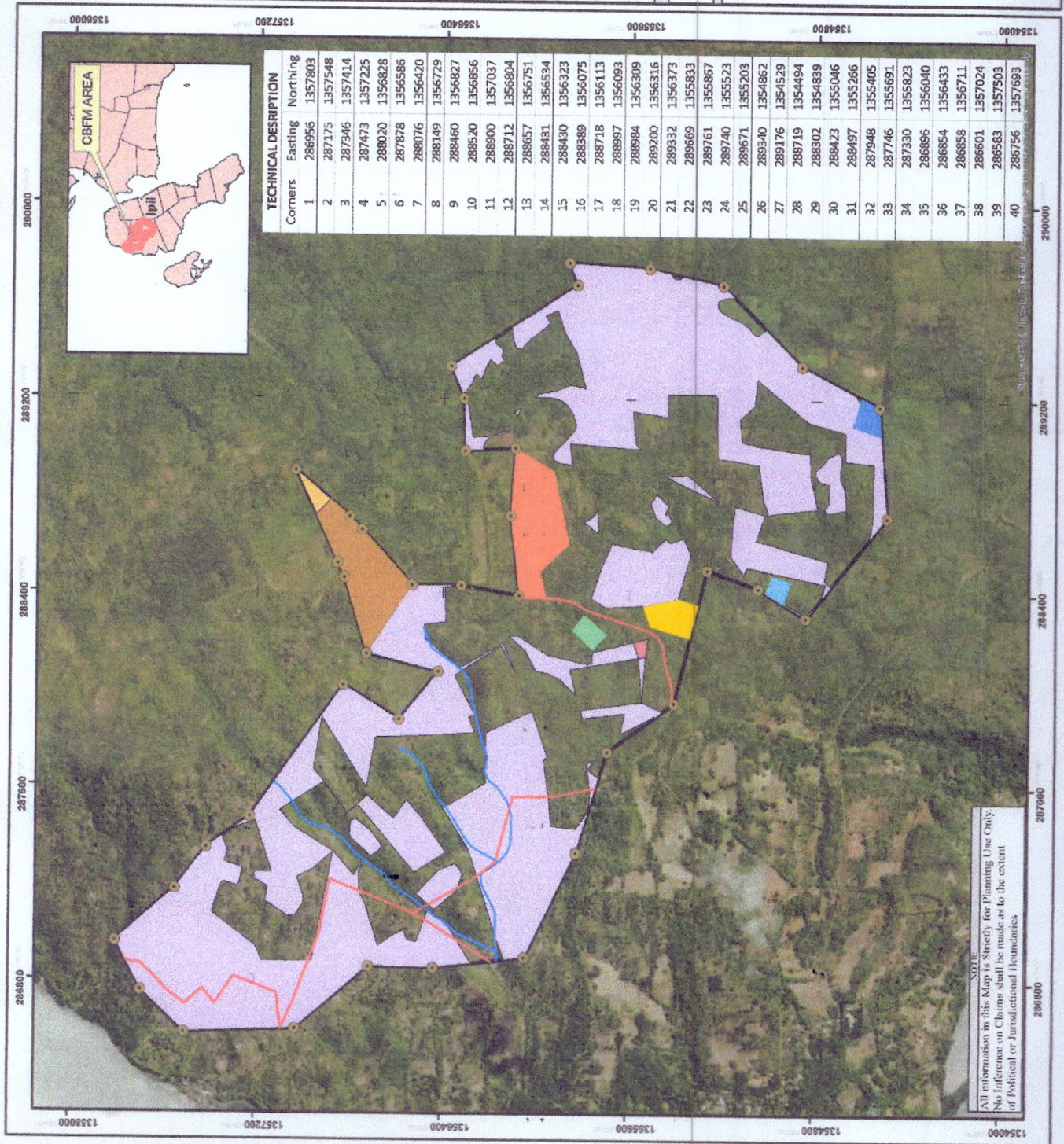
*An organization with continuous coordination and supports for the development of the organization and community. Strengthen and build-up equal opportunity on alternative livelihood and forest resources protection.*





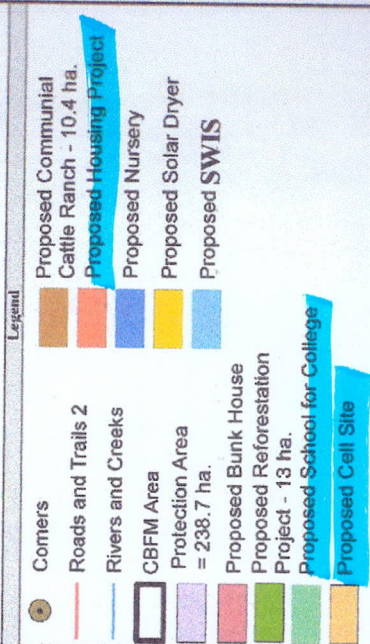


# IV. VISION MAPPING



## VISION MAP OF UPLAND AND COASTAL FARMERS DEVELOPMENT ASSOCIATION INC.

**SITIO:** IILING PROPER  
**MUNICIPALITY:** SAN JOSE  
**PROVINCE:** OCCIDENTAL MINDORO



Area

**APPROXIMATE AREA OF CBFM: 445.40 ha.**

Prepared by:

**NINO ALONSO B. COLEGADO**  
Area Application LUIS Operator

Reviewed and verified by:

**ERNESTO L. DELOS REYES**  
CBFM Officer

Attested by:

**ERNESTO TANADA**  
CBC Officer

**NOTE**  
All information in this Map is Strictly for Planning Use Only  
No Inference on Claims shall be made as to the extent of Political or Jurisdictional Boundaries