

# Reorientation | Installation of ArcGIS Desktop

July 15, 2022

## Contents:

Available licenses	1
Difference between ArcGIS Pro and ArcMap	1
Distribution of licenses	3
How the licensing works	5
Links for installers, instructions and form	5
Escalation Procedure on ArcGIS Desktop issues	6
How to get help	6

---

## Available licenses

The following licenses are available for use of the bureaus, attached agencies, regional offices, PENR offices, CENR offices and central office:

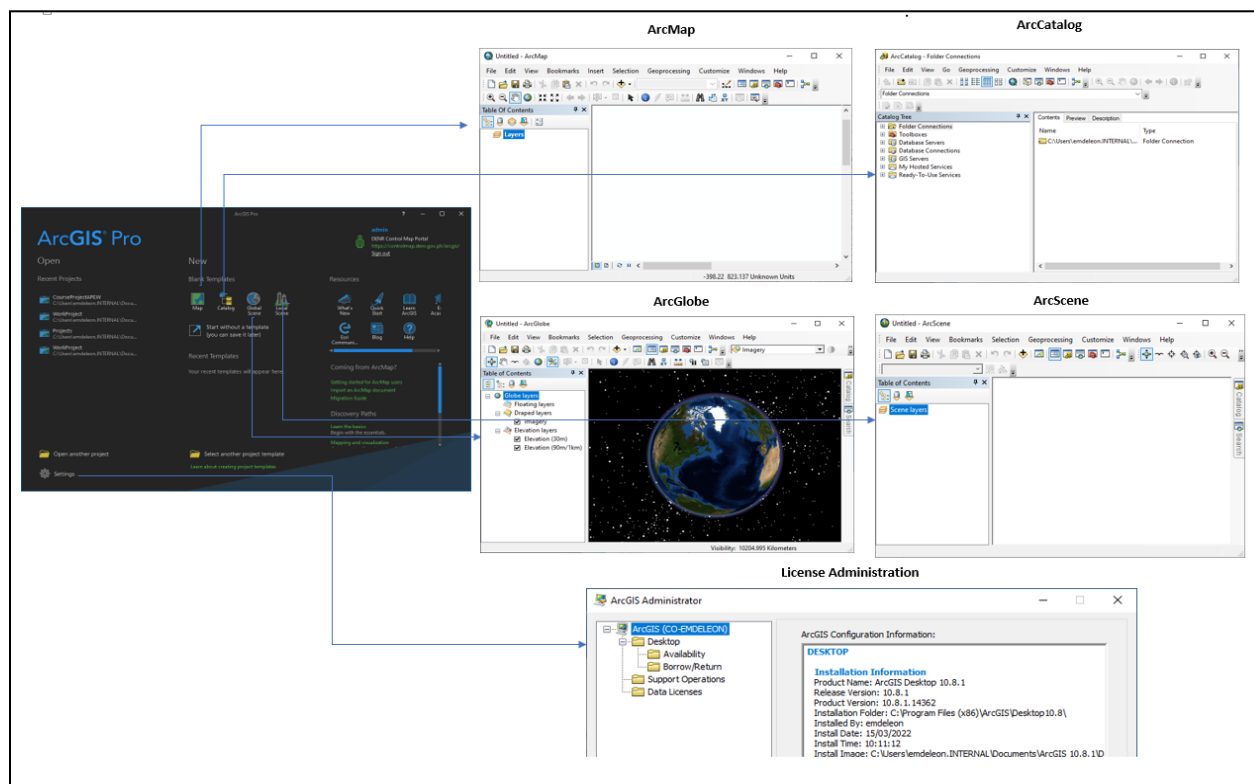
- ArcGIS Desktop (ArcMap) Advanced version 10.8
- ArcGIS Desktop (ArcMap) Standard version 10.8
- Spatial Analyst
- 3D Analyst
- Geostatistical Analyst
- ArcGIS Pro Advanced version 2.8
- ArcGIS Pro Standard version 2.8
- Spatial Analyst Pro
- 3D Analyst Pro
- Geostatistical Analyst Pro

## Difference between ArcGIS Pro and ArcMap

Description	ArcGIS Desktop (ArcMap)	ArcGIS Pro
Project file	.mxd (Map Document) Can't open an apex.file	.aprx (ArcGIS Pro Project) Can import an .mxd file into a Pro project.
License	Looks for license server if an organizational license	Named user license requires logging into ArcGIS Online using a named user account OR <b>current license</b> option works like with ArcGIS Desktop

Description	ArcGIS Desktop (ArcMap)	ArcGIS Pro
3D	ArcScene and ArcGlobe are stand-alone programs	3D integrated into the program
Catalog	Stand-alone ArcCatalog program	Incorporates catalog functions
Code	32-bit application	64-bit application (faster, can use >4 gb of memory)
Interface	Many toolbars that must be manually be turned on or off	Contextual ribbons, like MS-Office apps
Cloud	Not generally integrated (online address locators for geocoding is an exception)	More integrated with ArcGIS online
Layouts	Only one in a map document	Can have multiple in a single project
Geodatabase	Default gdb in your Windows Profile directory; same for all Map Documents	Creates a project folder that includes a new default gdb for that project, along with the .aprx file and a toolbox for tools you create

Reference: [Compare with ArcMap - ArcGIS Pro Introduction - LibGuides at Duke University](#)



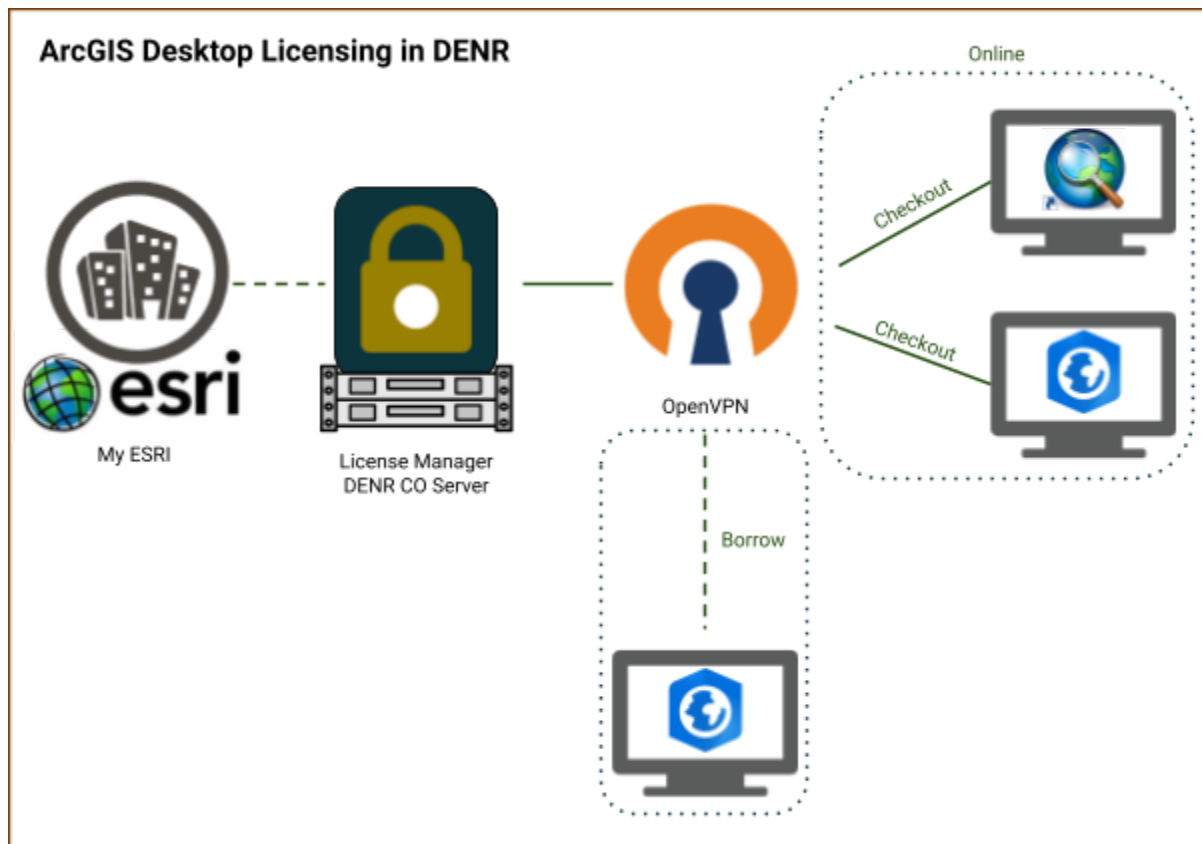
## Distribution of licenses

For the field offices, the following distribution will be followed:

Office	Regional Office	Supervising PENRO	CENRO / Implementing PENRO
ArcGIS Desktop (ArcMap) Advanced	1	1	1
ArcGIS Desktop (ArcMap) Standard	4	1	2
Spatial Analyst	1	0	0
3D Analyst	1	0	0
Geostatistical Analyst	1	0	0
ArcGIS Pro Advanced	1	1	1
ArcGIS Pro Standard	4	1	2
Spatial Analyst Pro	1	0	0
3D Analyst Pro	1	0	0
Geostatistical Analyst Pro	1	0	0
Recommended Distribution	1 license each (ArcMap and ArcGIS Pro) for PMD, CDD, ED, LPDD, SMD	GIS workstation and other available computers or laptops with adequate systems requirements being used by GIS users of the office	GIS workstation and other available computers or laptops with adequate systems requirements being used by GIS users of the office

\* There is ongoing procurement at this time which will enable distribution of ArcGIS extensions (Spatial Analyst, and 3D Analyst) to the PENROs and CENROs.

## How the licensing works



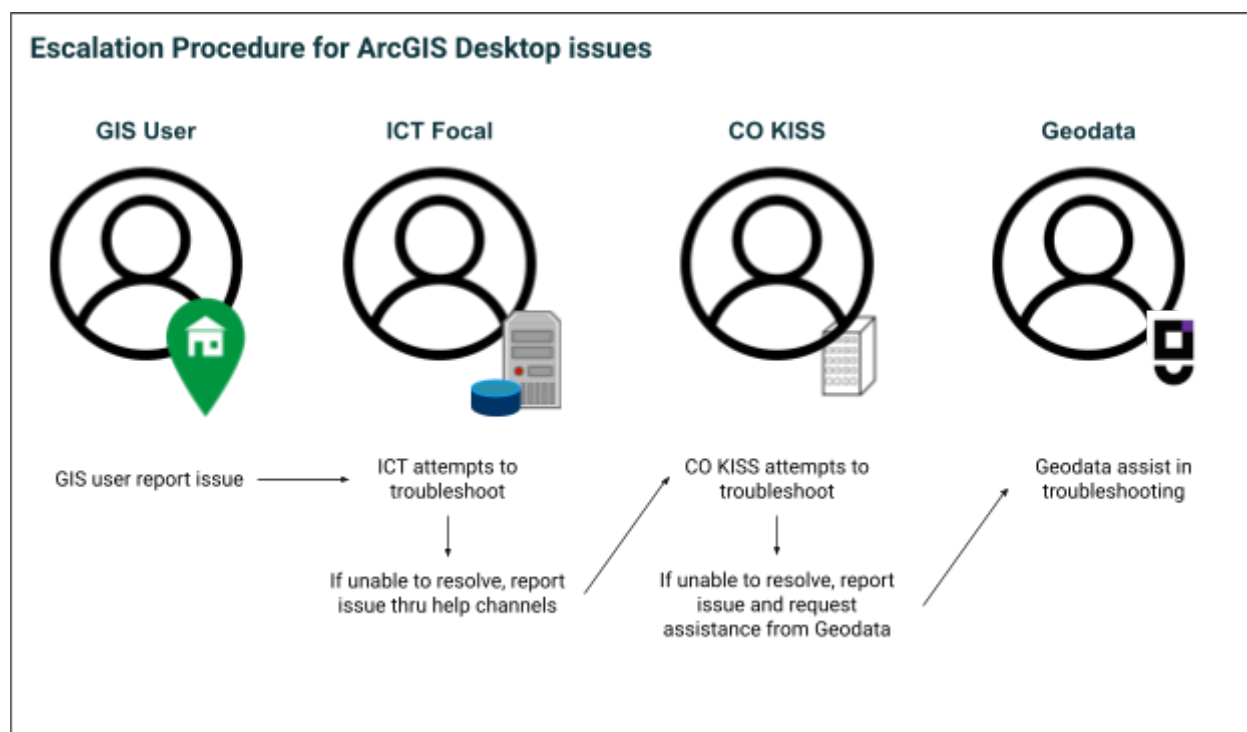
## Links for installers, instructions and form

The following links are available through the DENRCM Help Desk:

[DENRCM Help Desk - Installation \(google.com\)](#)

- [Installation Video](#)
- [ArcGIS Pro 2.8](#)
  - [Instructions for installation of ArcGIS Pro](#)
  - [ArcGIS Pro 2.8 Installer](#)
- [ArcMap 10.8](#)
  - [Instructions for installation of ArcMap](#)
  - [ArcMap 10.8 Installer](#)
- [OpenVPN](#)
  - [Instructions for installation of OpenVPN](#)
  - [OpenVPN for Windows 7](#)
  - [OpenVPN for Windows 10](#)
- [Change license type](#)
  - [Using ArcGIS Pro](#)
  - [Using ArcMap](#)

## Escalation Procedure on ArcGIS Desktop issues



## How to get help

For technical support:

1. Visit the DENRCM Help Desk at <https://sites.google.com/denr.gov.ph/denrcm-help/>
2. Send an email to: [portal\\_techsupport@denr.gov.ph](mailto:portal_techsupport@denr.gov.ph)
3. Call VOIP 1194 or landline (02) 89258278

Members of the team who can assist you:

- Joshua Aguilar
- Eloisa De Leon
- Roja Guia Bati-on
- Rose Anne Escudero

## Agreements:

Activity	Remarks
----------	---------

<input type="checkbox"/> SDRMD to request for single use license to be distributed to each region (including extensions) to Geodata	
<input type="checkbox"/> SDRMD to send json files (auth key) to regional ICT by 7/22/2022	